
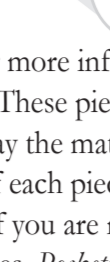


- SUPPLIES NEEDED**
- 4 YARDS OF 54" WIDE FABRIC
 - SHARP SCISSORS
 - REMOVABLE MARKING MEDIUM (chalk, wax, tailor's tuck, etc.)
 - 1 - 30" NON-SEPARATING ZIPPER
 - THREAD
 - SEWING MACHINE

- OPTIONAL:**
- 1/2 YARD OF THINNER POCKET FABRIC

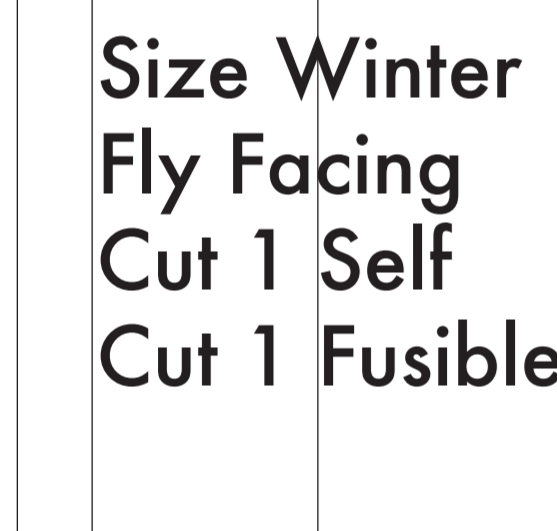
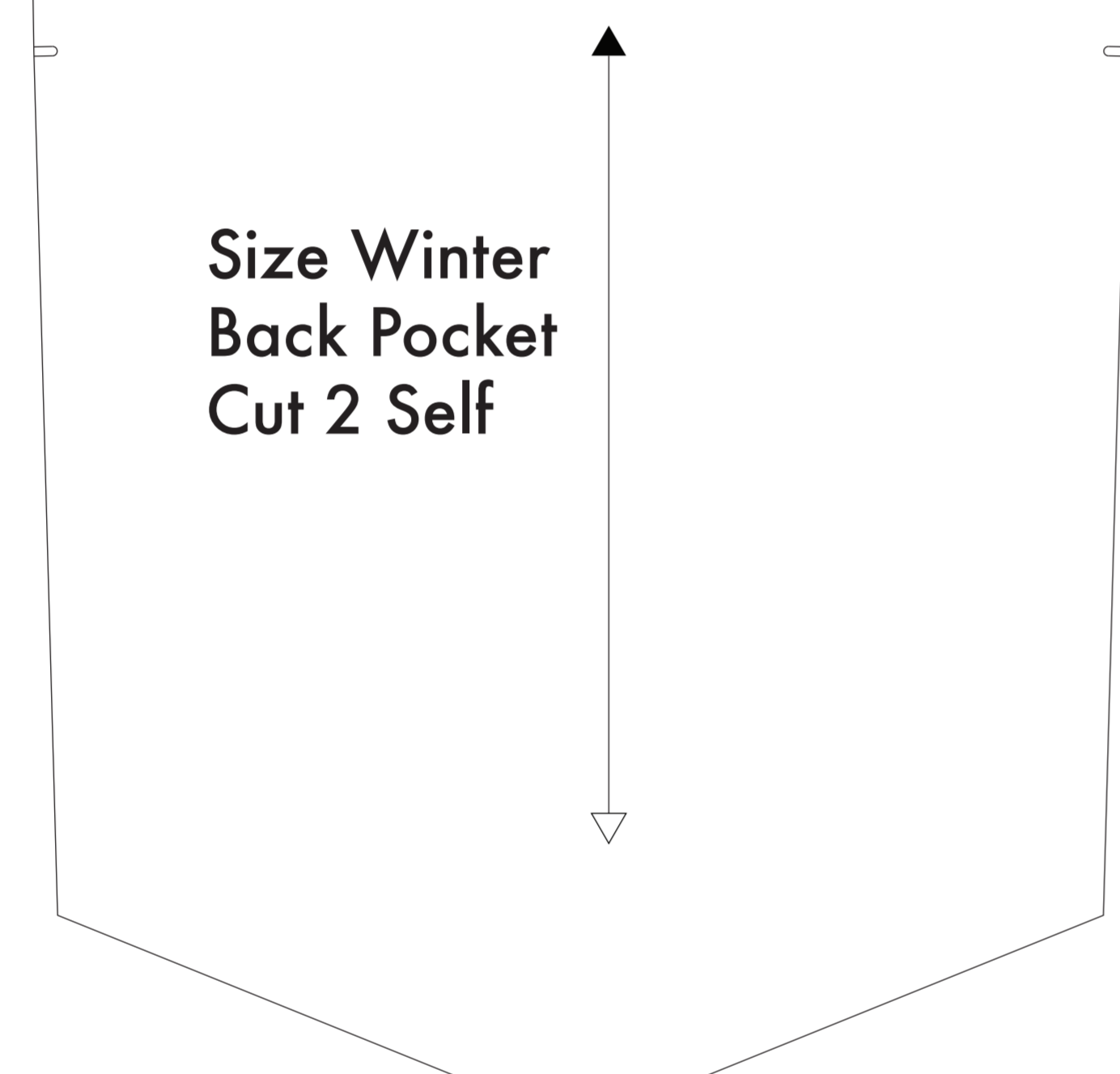
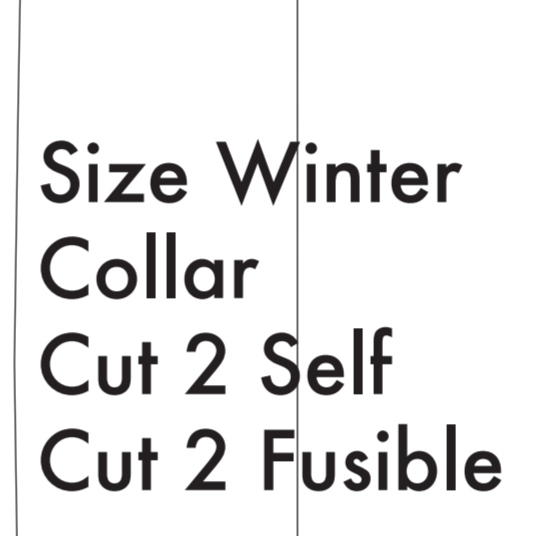
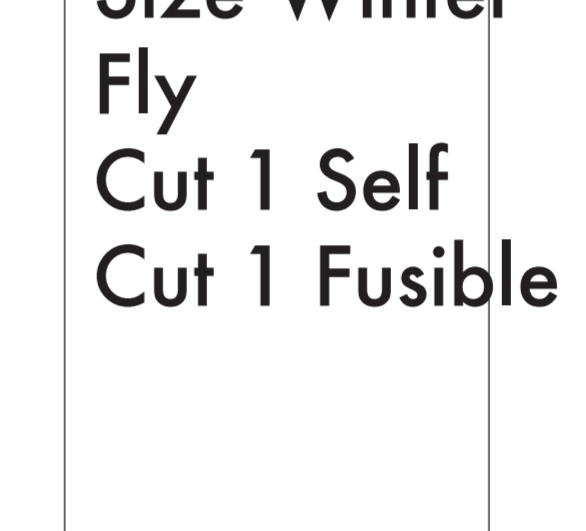
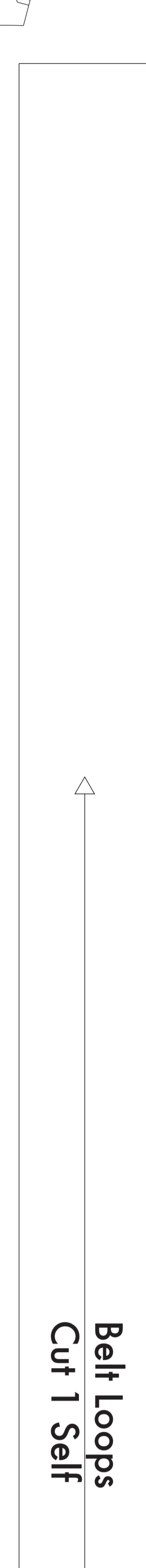
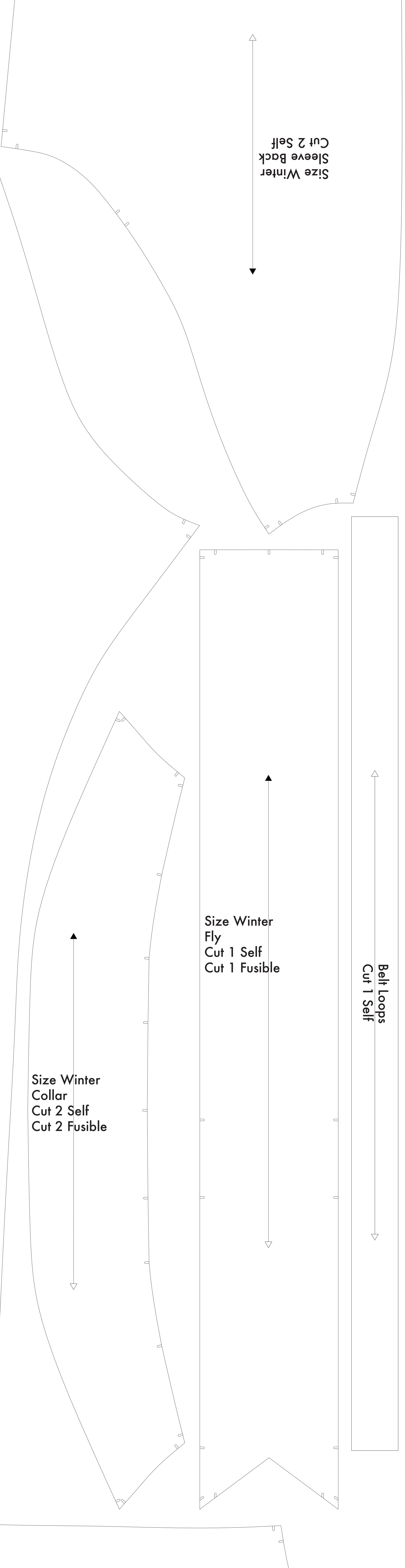
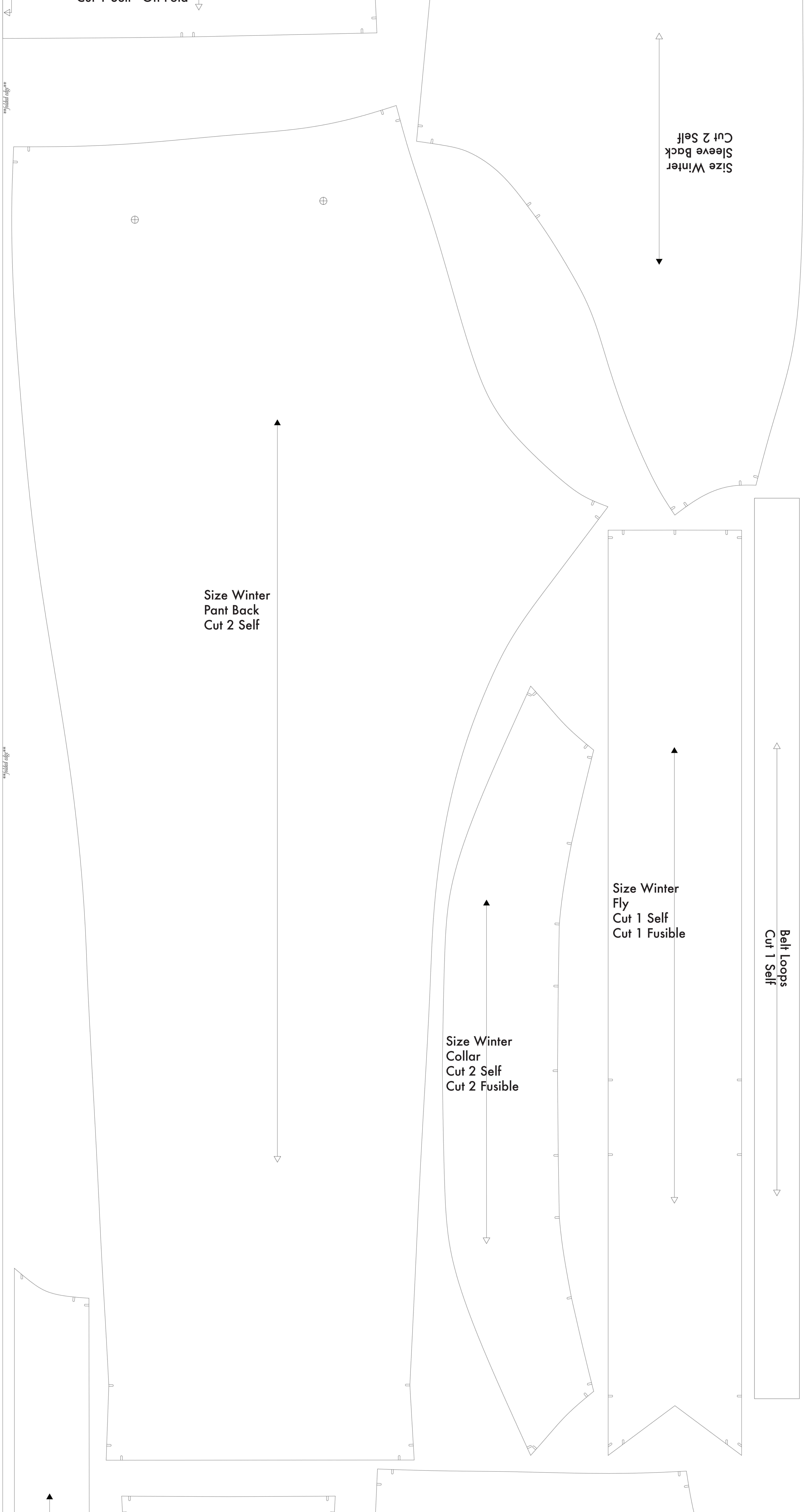
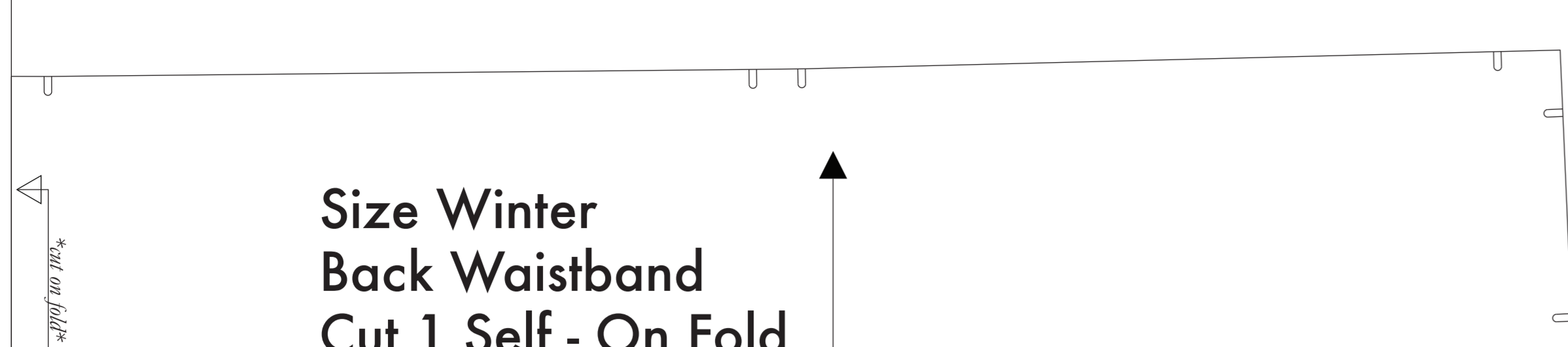
CUTTING INSTRUCTIONS

1. Print pattern. You can print this document flat on sheets of standard size paper and tape the pieces together, or print on a wide-format printer (16" or wider). Print drops offer the service for approximately \$12. If available to you, the B2B recommend wide-format printing.
2. Once your pattern is printed, cut along the outermost rectangle to remove any excess paper. This template should fit exactly on a 54" wide or larger piece of fabric that has been folded in half. If your fabric is less than 54" wide, see **NOTE A**. For maximum yield, the pattern is laid out for fabric that does not have a direction. For fabric with a grain, you will have to rotate the pattern to follow the grain. **NOTE:**
3. Fold your fabric in half along the lengthwise grain matching selvage edge to selvage edge. Schedule in the self-finished edge of fabric. This pattern includes the fabric from selvage to selvage. When it is on an edge, the markings are longer, though just a few inches, a clearly finished line will be found. Avoid this edge in your cut pieces as the pattern frequently differs from the main body of the fabric.
4. Place the paper template on top of your fabric, matching the finished edge of the fabric with the side of the paper marked "finished edge".
5. Place pins throughout the template pinning together both layers of fabric as well as the paper.
6. Cut around the perimeter of each piece.
7. Laying the paper flat, you will need to strip each of the notches, taking care to not strip beyond the end of the 1/4" shape.
8. Mark all notches and fold lines. Using a pin, bring together both layers of fabric and the pattern, mark the center of each fold line with chalk, wax or other removable, non-permanent mark. A fabric tuck may also be used.
9. The center fold line, or markings, are indicated by the following symbols:


 This will be used for the Back Back, Back Pocket, and Fly pieces.
10. **OPTIONAL:** Cut fusible interfacing pieces. **NOTE:** For maximum yield, pattern pieces that are fusible will be marked with the direction "Cut 1 Fusible" or "Cut 2 Fusible". These pieces are the Collar, Fly, Fly Facing, Front Pocket Facing, and Front Pocket Binding. Turn the fusible, by the material down with the glue side facing up, then place over pattern piece and cut around the perimeter of each piece and notch.
11. Cut the Front Pocket Bag out of a lighter pecking material. If you are not using a pecking material, then the Front Pocket Bag may be cut directly over other pattern pieces. Pecking and a waist belt is made of a lighter material. - You will find an example of pecking on any part of this plan.

NOTE A: FABRIC LESS THAN 54" WIDE
 If you fabric is less than 54" wide, you will need to cut the pattern pieces individually from the paper template and attach them to your fabric using either fusible or paper pieces on the lines or pinned onto the template. The center notches and pocket line will be marked on each pattern piece for ease of use. To find the grainline, cut a piece of fabric 4" long by 12" wide and pin it to either side. These two lines show the direction, or grain, of the fabric. When cutting, these two lines show the direction of the fabric. To ensure the lines are parallel to the grain, draw lines from the top piece to the edge of the fabric. Now mark the one distance with the bottom piece. The top of the pattern piece is equivalent from the edge of your fabric, then the pattern piece is correctly oriented.

NOTE B: FABRIC WITH NAP OR DIRECTIONAL PATTERN
 For fabric with a nap, such as velvet or corduroy, fabric with a pattern or directional pattern, or fabric with a directional pattern, you will need to cut the pattern pieces individually from the paper template and attach them to your fabric using either fusible or paper pieces on the lines or pinned onto the template. The center notches and pocket line will be marked on each pattern piece with the direction.

NOTE C: USING FUSIBLE INTERFACING
 Fusible interfacing is optional for most of our patterns, including our jumpsuit pattern pieces in general. While the use of fusible interfacing is optional, the Back Pocket Facing and Front Pocket Facing pieces are required for the construction of the jumpsuit.



Before cutting your fabric measure this square to make sure that the pattern is scaled correctly.*
 *Always pin the and adjust until automatically such large scale images which will affect the fit.
The inner square should measure 4" x 4"
The outer square should measure 12cm x 12cm

