

- SUPPLIES NEEDED**
- 3/4" YARDS OF 54" WIDE FABRIC
 - SHARP SCISSORS
 - REMOVABLE MARKING MEDIUM (chalk, wax, tailor's tack, etc.)
 - 1/2" NON-SEPARATING ZIPPER
- SEWING MACHINE**
- THREAD
- OPTIONAL:**
- 1/2" YARD OF THINNER POCKET FABRIC
 - FUSIBLE INTERFACING

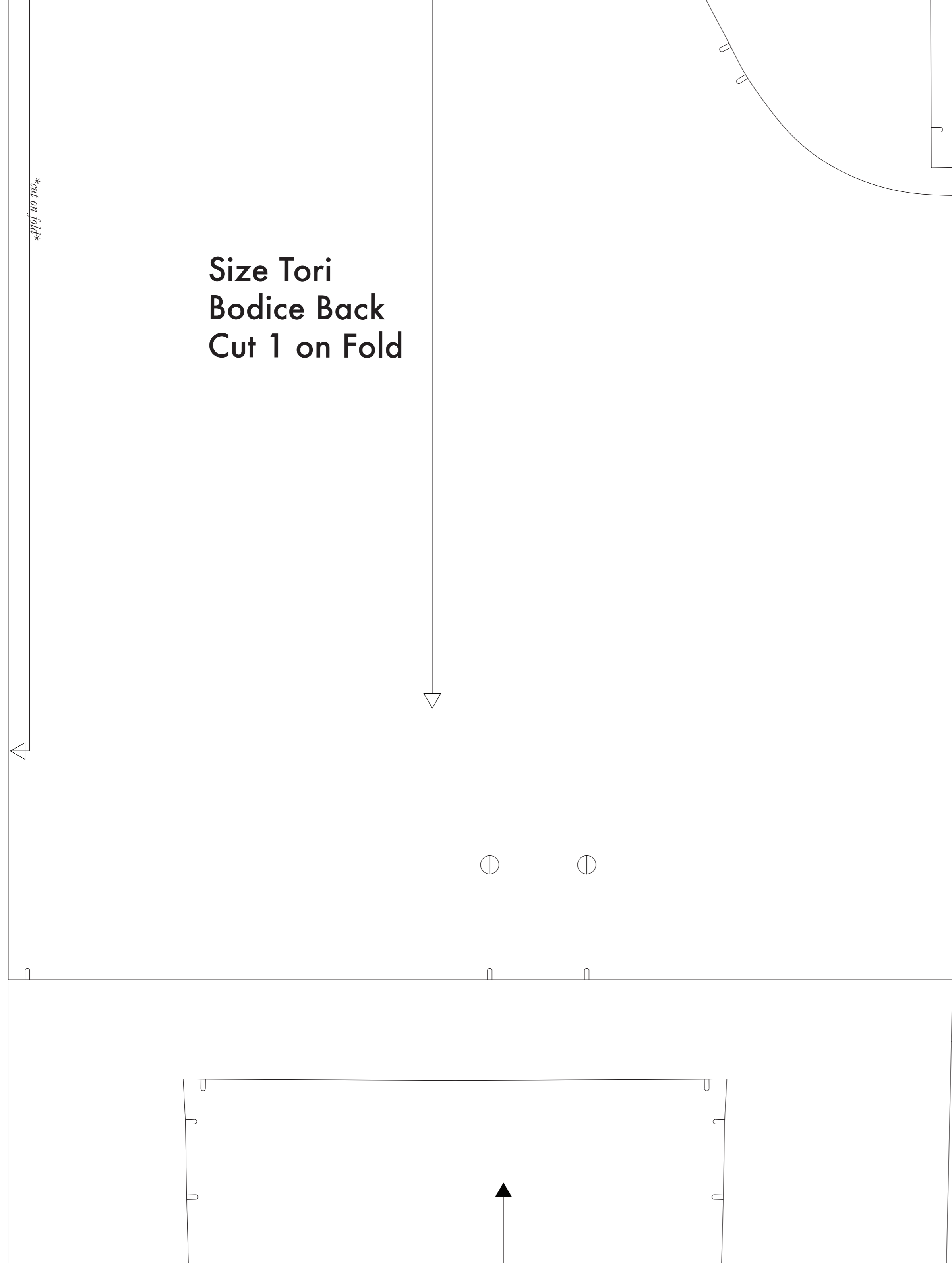
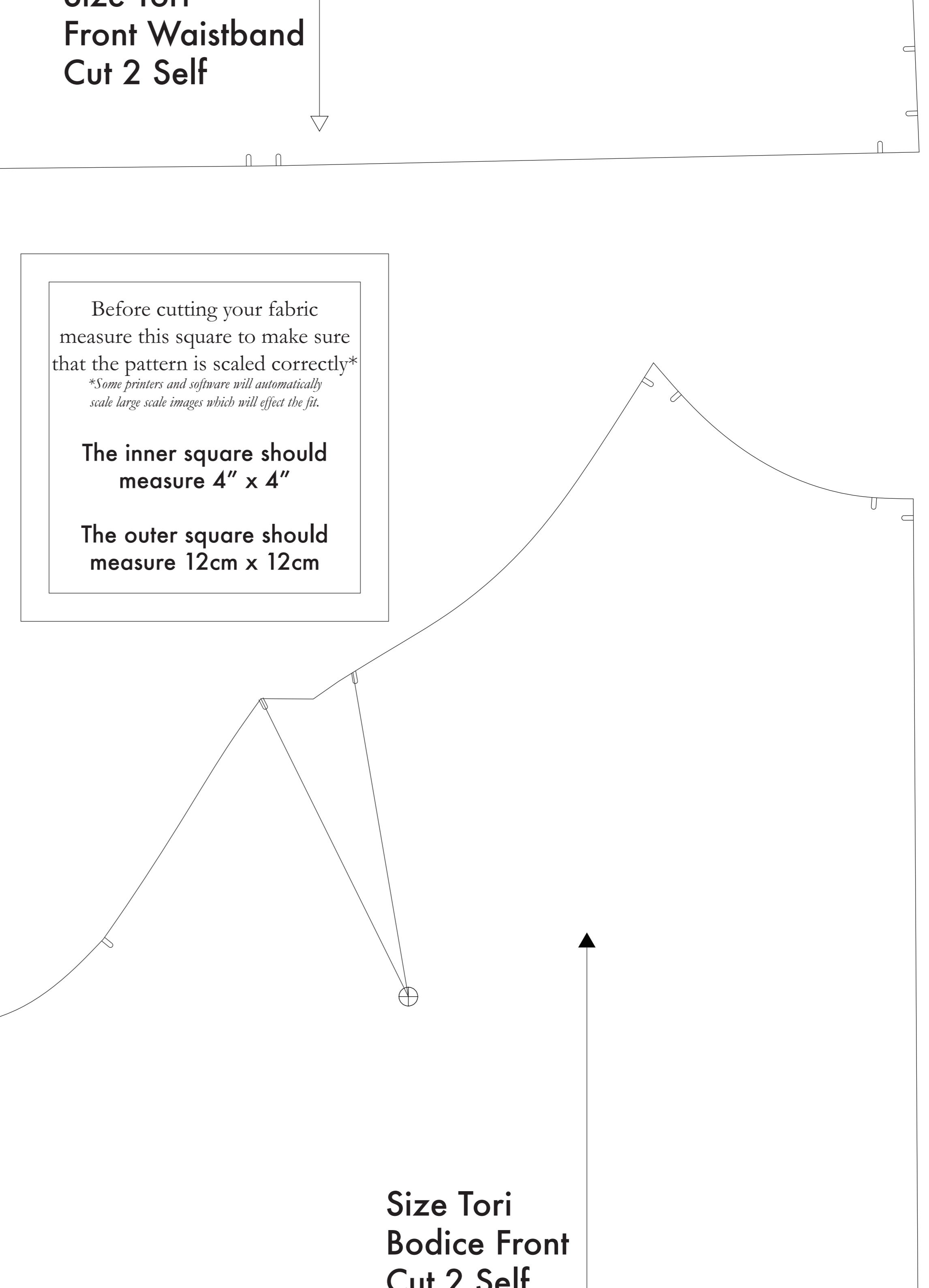
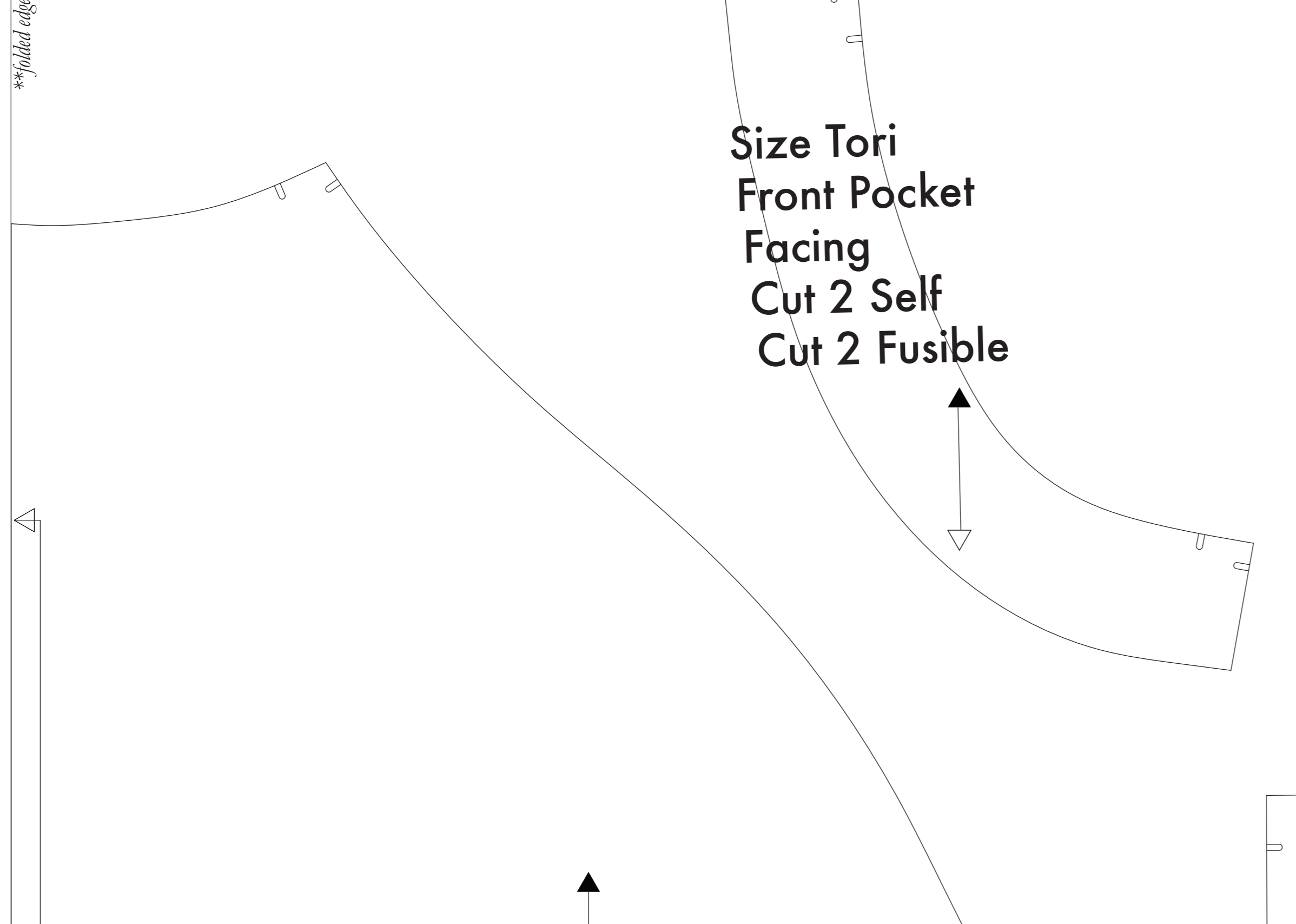
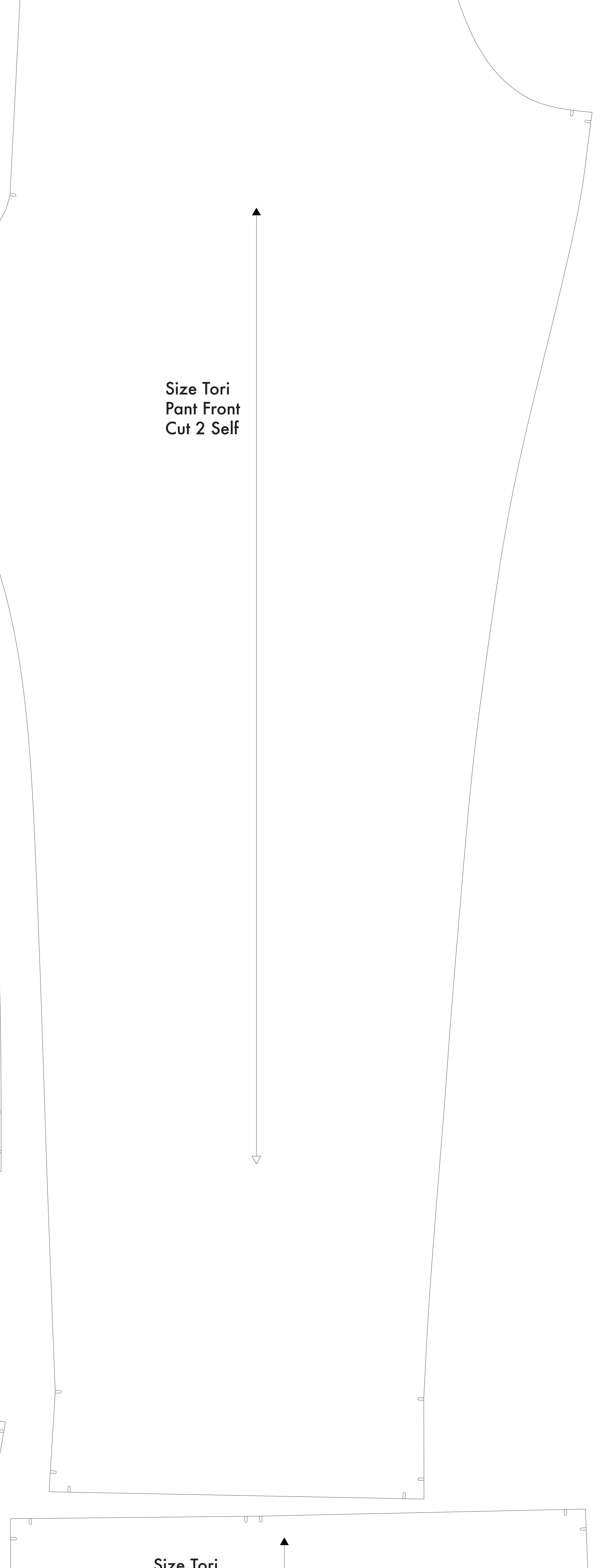
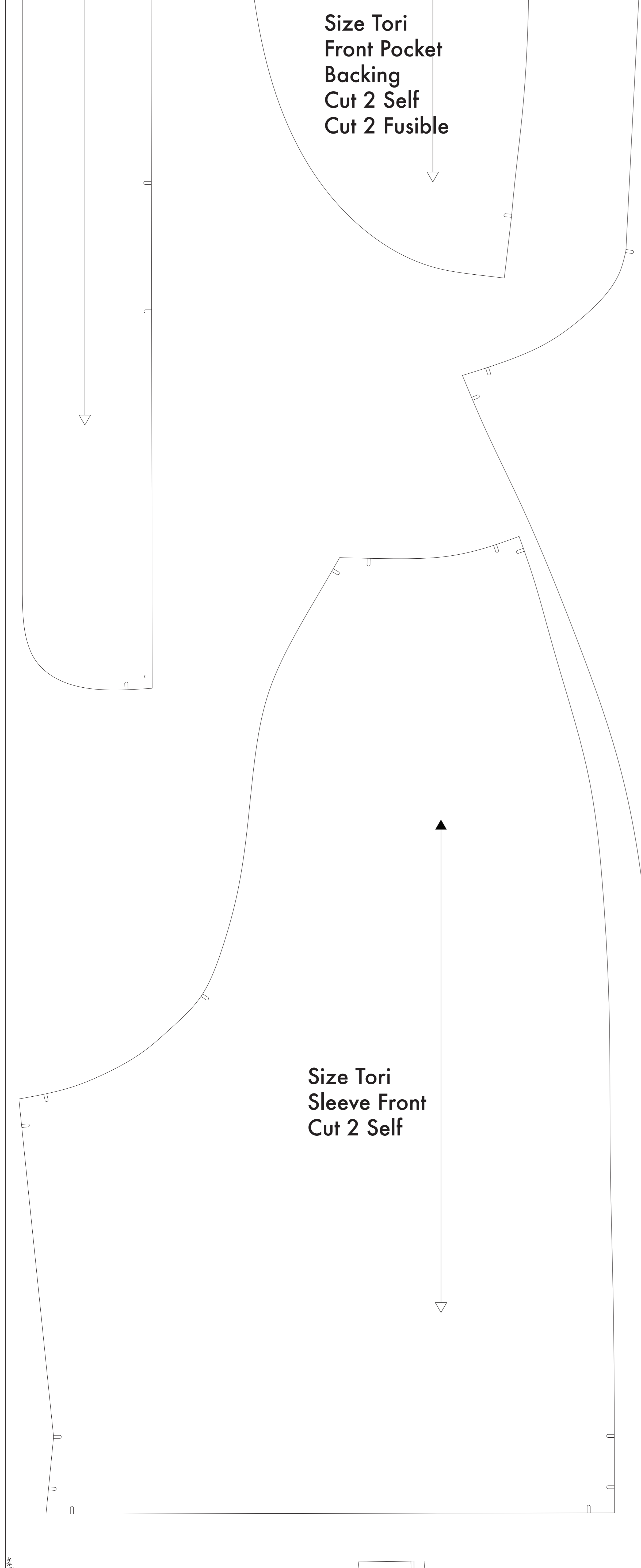
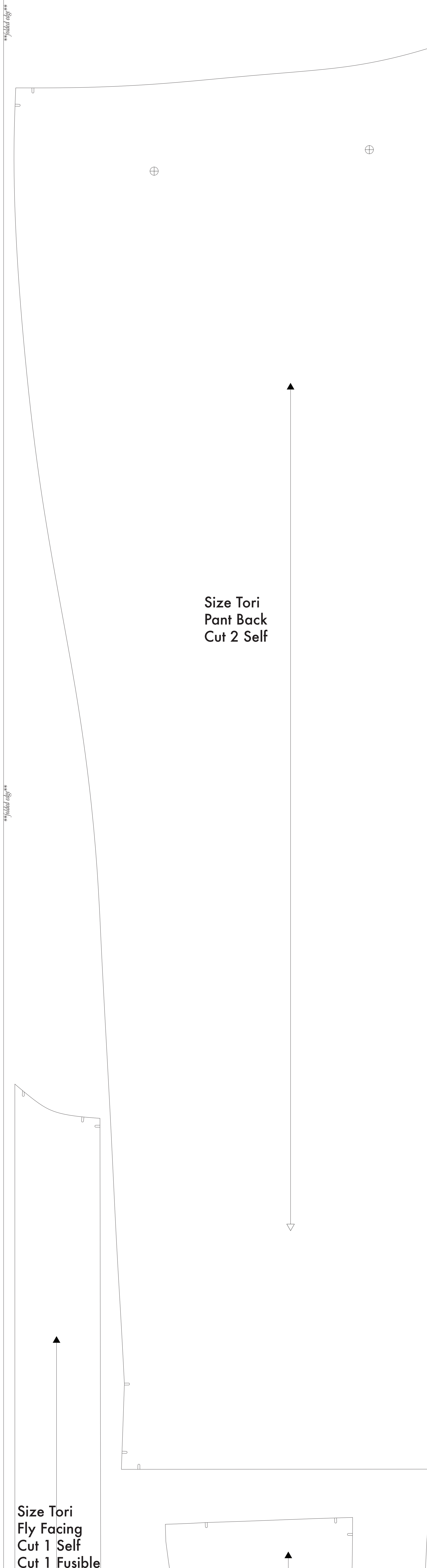
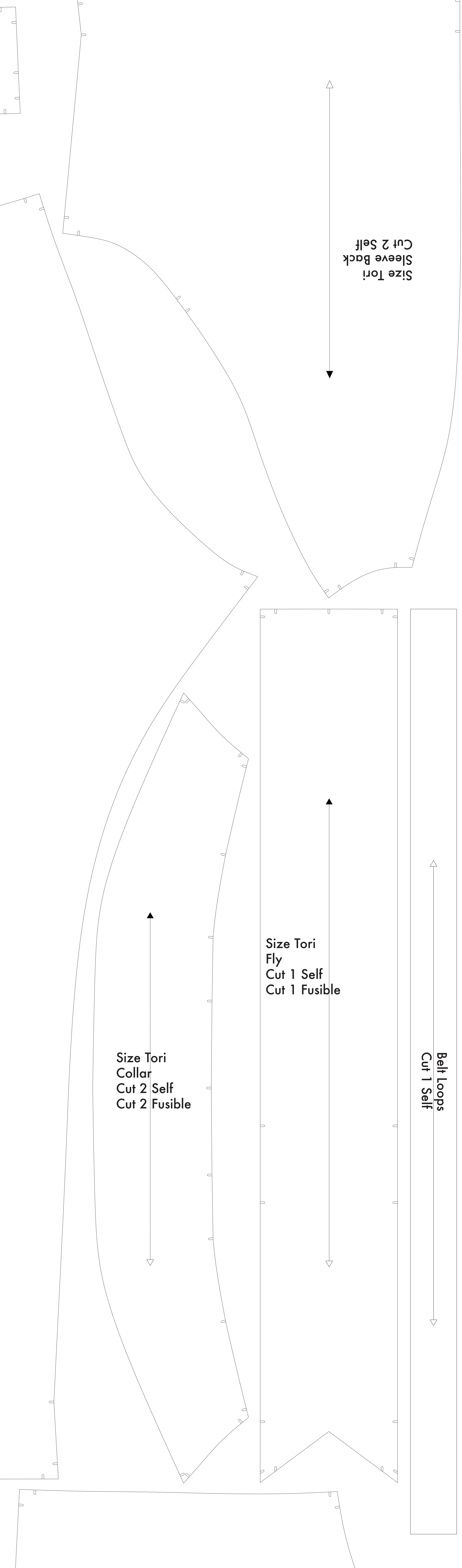
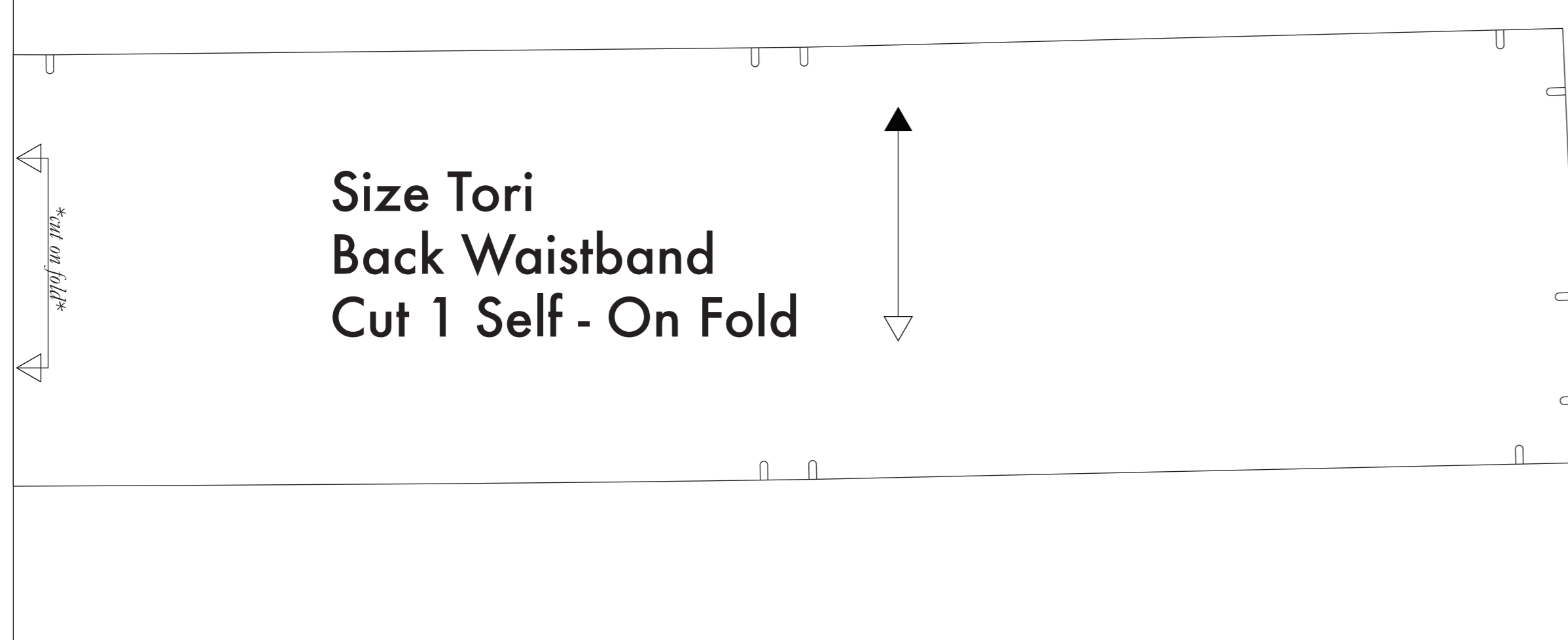
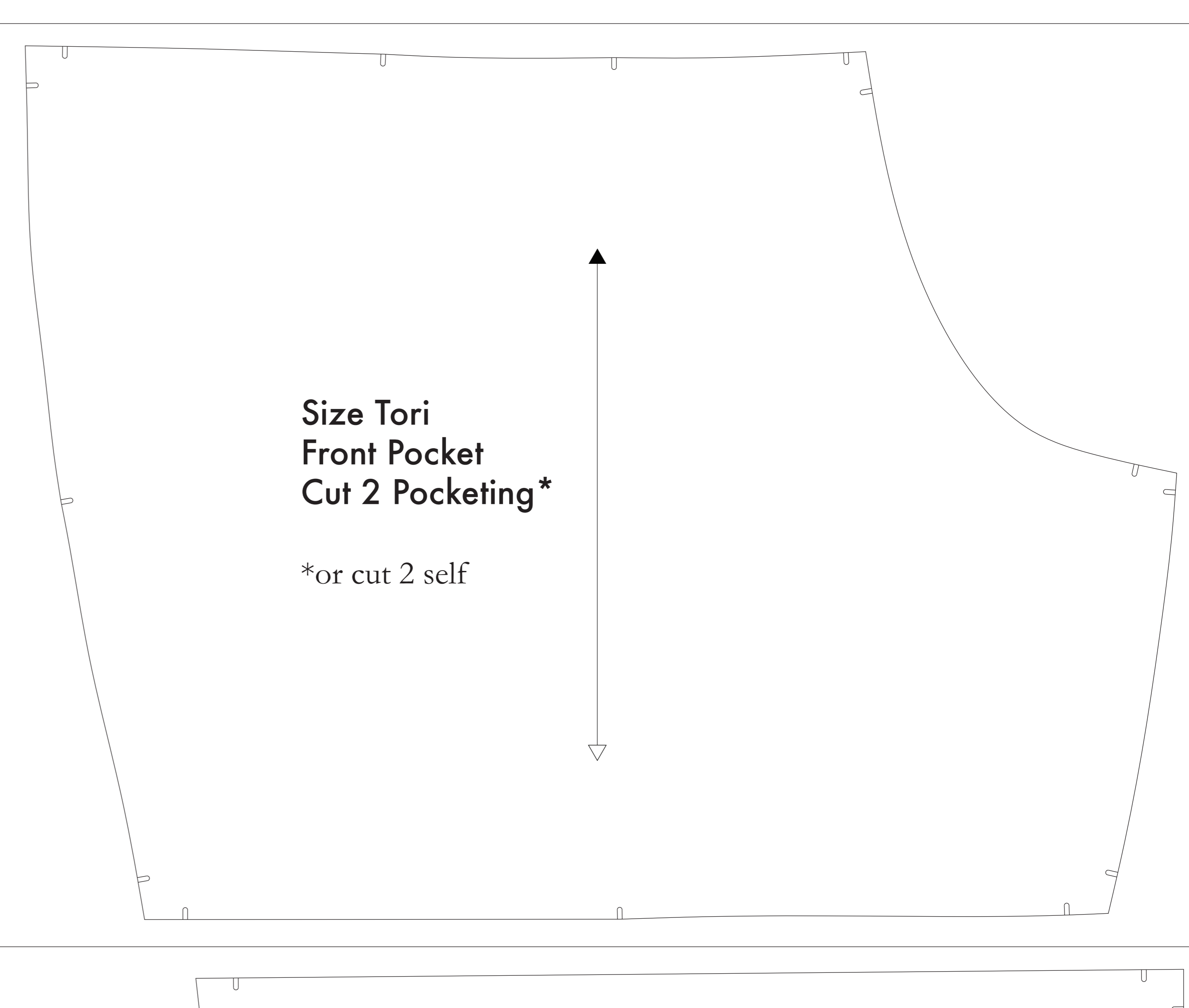
CUTTING INSTRUCTIONS

- Print pattern. You can print this document (that includes standard size paper and use the correct register, or print on a wide-format printer (24" or wider). Please check the size for approximately \$12. If available to you, the A220 is recommended for layout printing.
- Once your pattern is printed, cut along the outermost rectangle to remove any excess paper. This template should fit exactly on a 54" wide or larger piece of fabric that has been folded in half. If your fabric is less than 54" wide, you may need to cut the pattern in two pieces. **NOTE A:** For maximum yield this pattern is laid out for fabric that does not require a direction. For fabric with a grain, such as when you are working with fabric with a clear directional grain, see **NOTE B**.
- Fold your fabric in half along the lengthwise grain matching, with right edge to outside edge. Subdivide in the width into 12 equal parts. The arrow heads keep the fabric from moving or slipping. There is no side that is reversible (no fringe, though just in case), so a clearly finished top will be found. Avoid this edge in your cut pieces as the texture frequently differs from the main body of the fabric.
- Place the paper template on top your fabric, matching the folded edge of the fabric with the side of the paper marked "folded fabric".
- Place pins throughout the template pressing together both layers of fabric as well as the paper.
- Cut around the perimeter of each piece.
- For any the pins in place, you will need to step each of the pieces, taking care to not step beyond the end of the 5" shape.
- Mark the center of the waistband with a small dot. **NOTE B:** For fabric with a directional grain, such as when you are working with fabric with a clear directional grain, see **NOTE A**. For fabric with a directional grain, such as when you are working with fabric with a clear directional grain, see **NOTE A**. For fabric with a directional grain, such as when you are working with fabric with a clear directional grain, see **NOTE A**.
- Match all inner and outer edges. Using a pin, bring together both layers of fabric and the pattern, mark the center of each hole with chalk, wax or other removable, non-permanent tool. A tailor's tack may also be used. This marker will help you align the pieces when you sew.
- Use the paper template as a guide to cut the pieces. **NOTE C:** For maximum yield, fabric pieces that are marked with the reference "Cut 2 Self" or "Cut 1 Fusible". These pieces are the Collar, Fly, Fly Facing, Front Pocket Facing, and Front Pocket Backing. For use the fabric, lay the material down with the plus side facing up, then place your pattern down and cut around the perimeter of each piece and each.
- For the Front Pocket Backing, if you are not using fusible interfacing, then the Front Pocket Bag may be cut straight over your pattern piece. Pulling is used to make each in case of fabric stretch. You will find an example of pulling on any pair of the jeans.

NOTE A: FABRIC LESS THAN 54" WIDE
If your fabric is less than 54" wide, you will need to cut the pattern pieces separately from the paper template and then align them to your fabric using the reference points on the fabric. There are two main reference points: the center of the waistband and the center of the fly. The waistband reference point is located at the top of the waistband and the fly reference point is located at the top of the fly. The waistband reference point is located at the top of the waistband and the fly reference point is located at the top of the fly.

NOTE B: FABRIC WITH A DIRECTIONAL GRAIN
If your fabric has a directional grain, such as when you are working with fabric with a clear directional grain, you will need to cut the pattern pieces separately from the paper template and then align them to your fabric using the reference points on the fabric. There are two main reference points: the center of the waistband and the center of the fly. The waistband reference point is located at the top of the waistband and the fly reference point is located at the top of the fly.

NOTE C: USING FUSIBLE INTERFACING
Fusible interfacing is a material that is used to reinforce fabric and make it more durable. It is used to reinforce the waistband, collar, and pocket facing. To use fusible interfacing, you will need to cut the pattern pieces separately from the paper template and then align them to your fabric using the reference points on the fabric. There are two main reference points: the center of the waistband and the center of the fly. The waistband reference point is located at the top of the waistband and the fly reference point is located at the top of the fly.



Before cutting your fabric measure this square to make sure that the pattern is scaled correctly!
*Line printers and software will automatically scale large web images which will affect the fit.
The inner square should measure 4" x 4"
The outer square should measure 12cm x 12cm