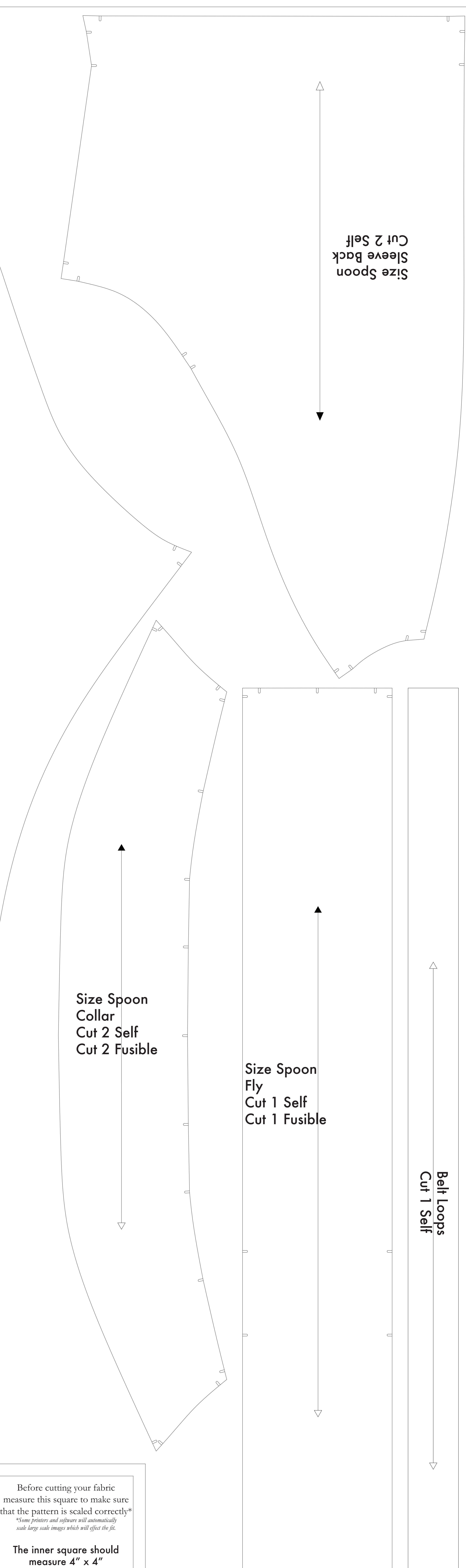
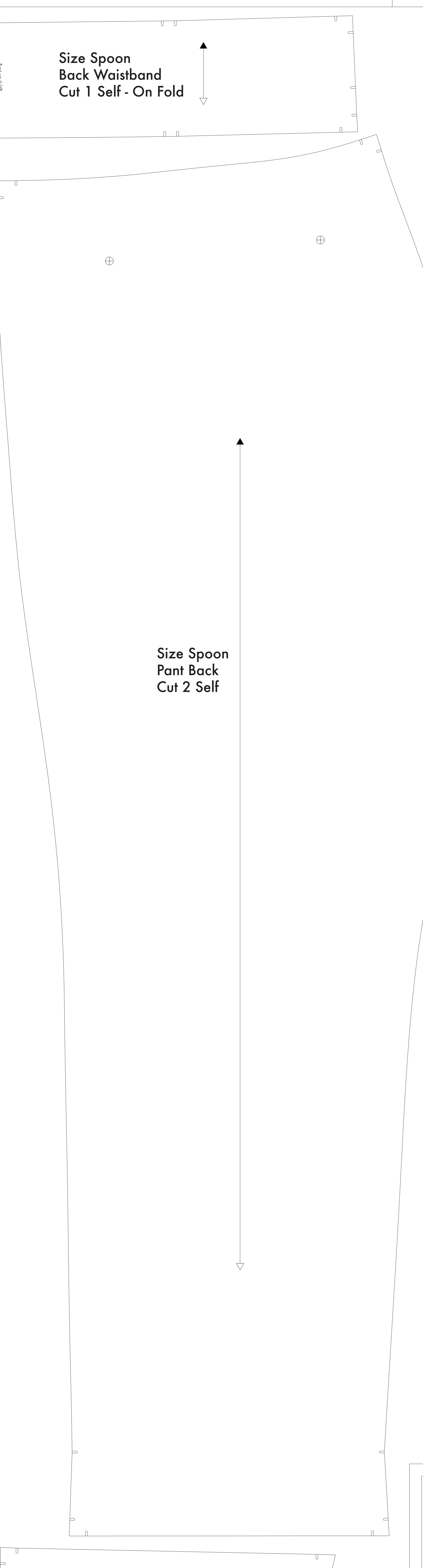
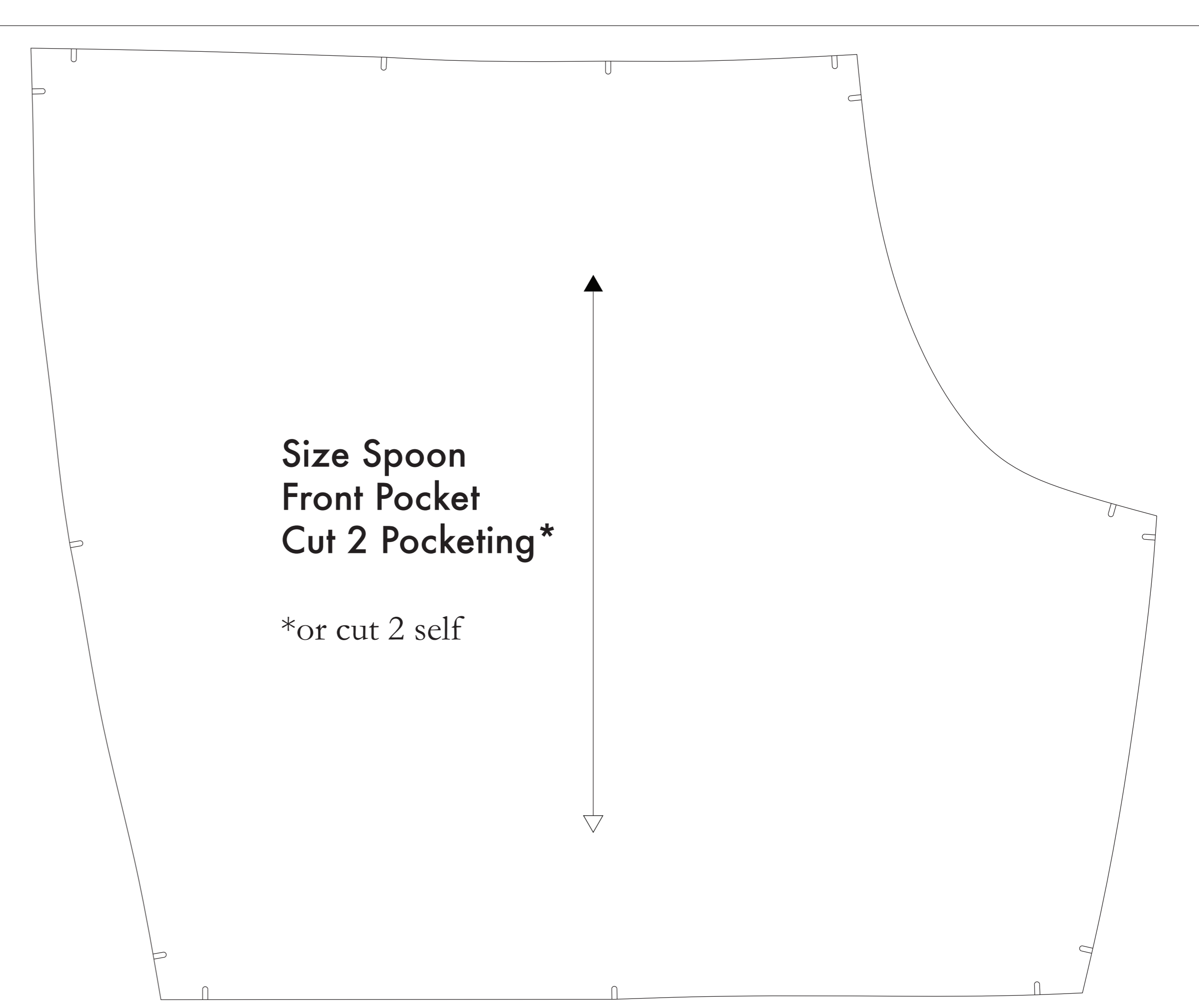


- SUPPLIES NEEDED**
- 3-11" FARDS OF 24" WIDE FABRIC
 - SHARP SCISSORS
 - REMOVABLE MARKINGS MEDIUM (chalk, wax, tailor's foot, etc.)
 - 1/2" ZIP NON-SEPARATING ZIPPER
 - THREAD
 - SEWING MACHINE
- optional:**
- 1/2" YARD OF THINNER POCKET FABRIC
 - FUSIBLE INTERFACING

CUTTING INSTRUCTIONS

1. Trace pattern. You can print this document thick on sheets of standard size paper and tape the pieces together, or print on a wide-format printer (36" or wider). Print sheets offer this service for approximately \$12. If unable to print, the PDF recommends wide-format printing.
2. Once your pattern is printed, cut along the outermost rectangle to remove any excess paper. This template should fit exactly on a 36" wide or larger piece of fabric that has been folded in half. If your fabric is less than 36" wide, see **NOTE A**. For maximum yield this pattern is laid out for fabric that doesn't have a direction. For fabric with a long, narrow texture or fabric with a clear directional grain see **NOTE B**.
3. Fold your fabric in half along the longwise grain matching selvedge edge to selvedge edge. Selvedge is the self-finished edge of fabric. This narrow border keeps the fabric from stretching or fraying. There is no edge that resembles any fringe, though just as frequently, a clearly finished line will be found. Avoid this edge in your cut pieces as the texture frequently differs from the main body of the fabric.
4. Place the paper template on top your fabric, matching the folded edge of the fabric with the side of the paper marked "folded edge".
5. Place pins throughout the template pinning together both layers of fabric as well as the paper.
6. Cut around the perimeter of each piece.
7. Leaving the pins in place, you will need to snip each of the notches, taking care to not snip beyond the end of the 1/4" depth.
8. **NOTE A: FABRIC LESS THAN 36" WIDE**
 If your fabric is less than 36" wide, you will need to cut with a wide-format printer (36" or wider). Print sheets offer this service for approximately \$12. If unable to print, the PDF recommends wide-format printing.
 The pattern pieces are laid out for fabric that doesn't have a direction. For fabric with a long, narrow texture or fabric with a clear directional grain see **NOTE B**.
NOTE B: FABRIC WITH A DIRECTIONAL GRAIN
 The fabric is laid out with the texture or pattern parallel with a clear directional grain, or for matching stripes with a fabric that will look best in the pattern's direction. Individual pieces that do not have a clear directional grain are laid out for fabric that does not have a direction.
NOTE C: USING FUSIBLE INTERFACING
 Fusible interfacing is optional and is not toasting, temporary, and either comes in paper or fabric.
 When the use of fabric interfacing is required, the fusible should be used on the inside of the fabric, matching the outer edge of the fabric to the outer edge of the interfacing.
NOTE D: USING THINNER POCKET FABRIC
 The pattern pieces for the pockets are laid out for fabric that is 1/2" wide. If you are using thinner pocket fabric, you will need to adjust the pattern pieces accordingly.
NOTE E: USING REMOVABLE MARKINGS MEDIUM
 The pattern pieces are laid out for fabric that has been folded in half. If you are using removable markings medium, you will need to adjust the pattern pieces accordingly.
9. **OPTIONAL: 1/2" ZIP NON-SEPARATING ZIPPER**
 Pattern pieces that use fusible will be marked with the directions "A" or "B" for "A" or "B". These pieces are the Collar Fly, Fly Facing, Front Pocket Facing, and Front Pocket Backing. To cut the fusible, lay the marked down with the glue side facing up, then place your pattern down and cut around the perimeter of each piece and notch.
10. Cut the Front Pocket Bag out of a higher pocketing material. If you are not using pocketing material, then the Front Pocket Bag may be cut through your other pattern pieces. Pocketing is not a fabric that is used in other materials. - You will find an example of pocketing on any part of this plan.

NOTE A: FABRIC LESS THAN 36" WIDE
 If your fabric is less than 36" wide, you will need to cut with a wide-format printer (36" or wider). Print sheets offer this service for approximately \$12. If unable to print, the PDF recommends wide-format printing.
 The pattern pieces are laid out for fabric that doesn't have a direction. For fabric with a long, narrow texture or fabric with a clear directional grain see **NOTE B**.
NOTE B: FABRIC WITH A DIRECTIONAL GRAIN
 The fabric is laid out with the texture or pattern parallel with a clear directional grain, or for matching stripes with a fabric that will look best in the pattern's direction. Individual pieces that do not have a clear directional grain are laid out for fabric that does not have a direction.
NOTE C: USING FUSIBLE INTERFACING
 Fusible interfacing is optional and is not toasting, temporary, and either comes in paper or fabric.
 When the use of fabric interfacing is required, the fusible should be used on the inside of the fabric, matching the outer edge of the fabric to the outer edge of the interfacing.
NOTE D: USING THINNER POCKET FABRIC
 The pattern pieces for the pockets are laid out for fabric that is 1/2" wide. If you are using thinner pocket fabric, you will need to adjust the pattern pieces accordingly.
NOTE E: USING REMOVABLE MARKINGS MEDIUM
 The pattern pieces are laid out for fabric that has been folded in half. If you are using removable markings medium, you will need to adjust the pattern pieces accordingly.



Before cutting your fabric measure this square to make sure that the pattern is scaled correctly*

*Have printer and software set automatically with large image which will give the fit.

The inner square should measure 4" x 4"

The outer square should measure 12cm x 12cm

