

- SUPPLIES NEEDED**
- 3/4 YARDS CF 54" WIDE FABRIC
 - STAPLER
 - REMOVABLE MARKING MEDIUM (chalk, wax, miller's tack, etc.)
 - 1/2" WIDE NON-SEPARATING ZIPPER
 - THREAD
 - SEWING MACHINE
- optional:
- 1/2 YARD OF THINNER POCKET FABRIC
 - FUSIBLE INTERFACING

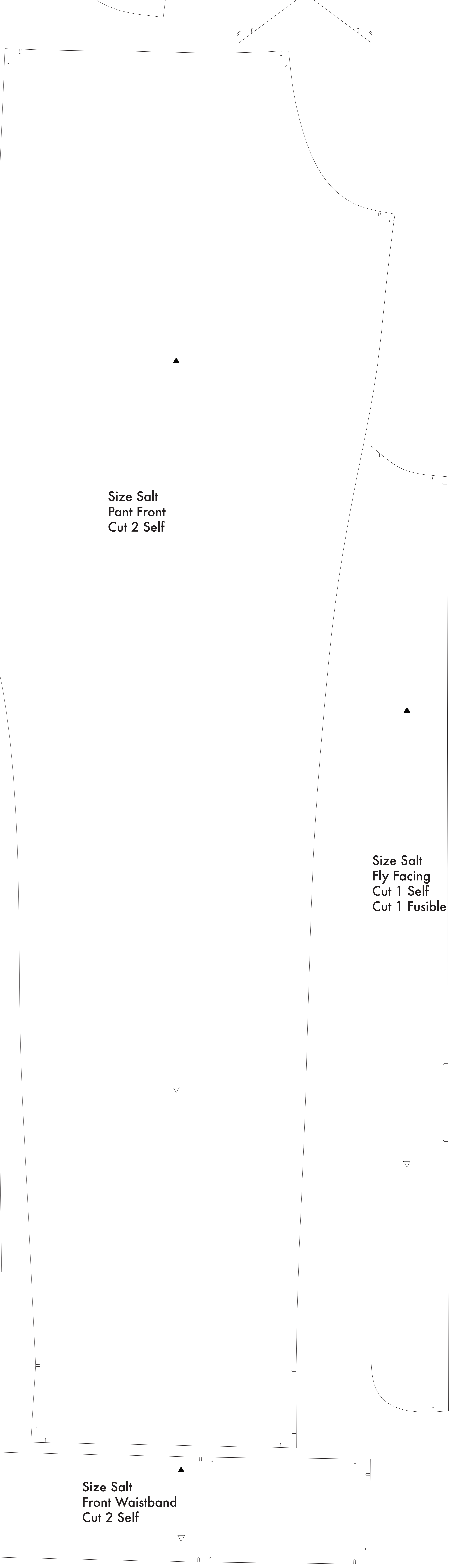
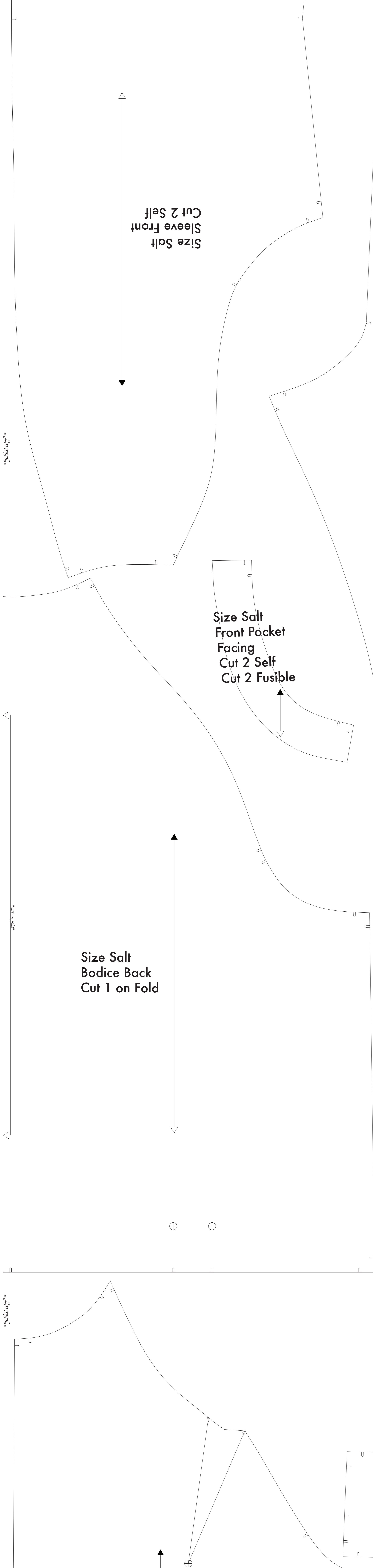
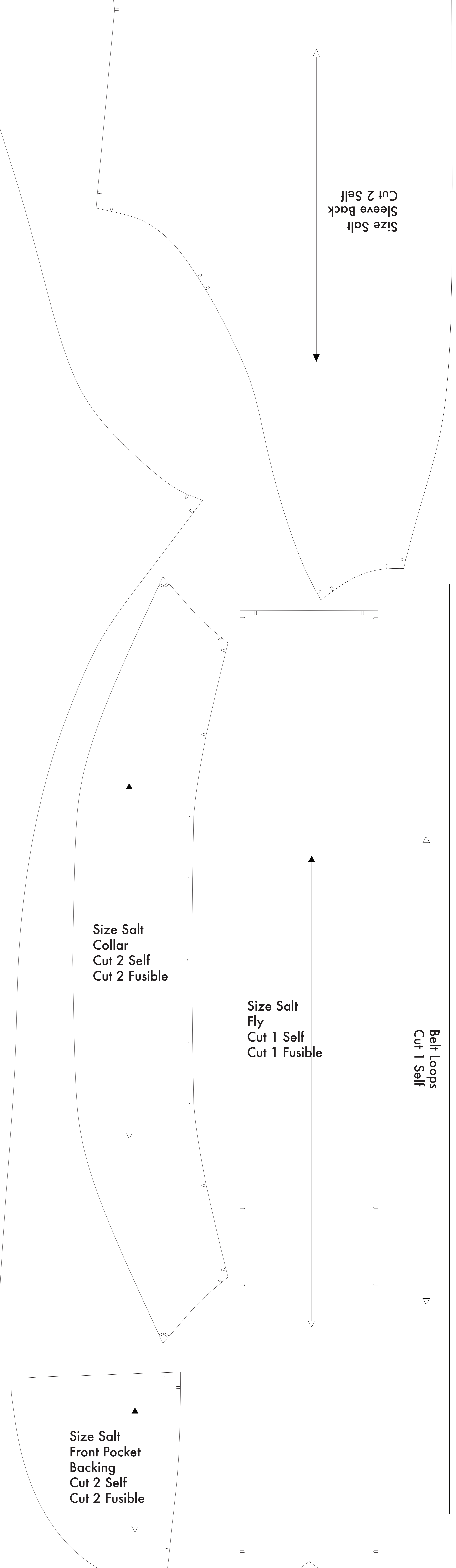
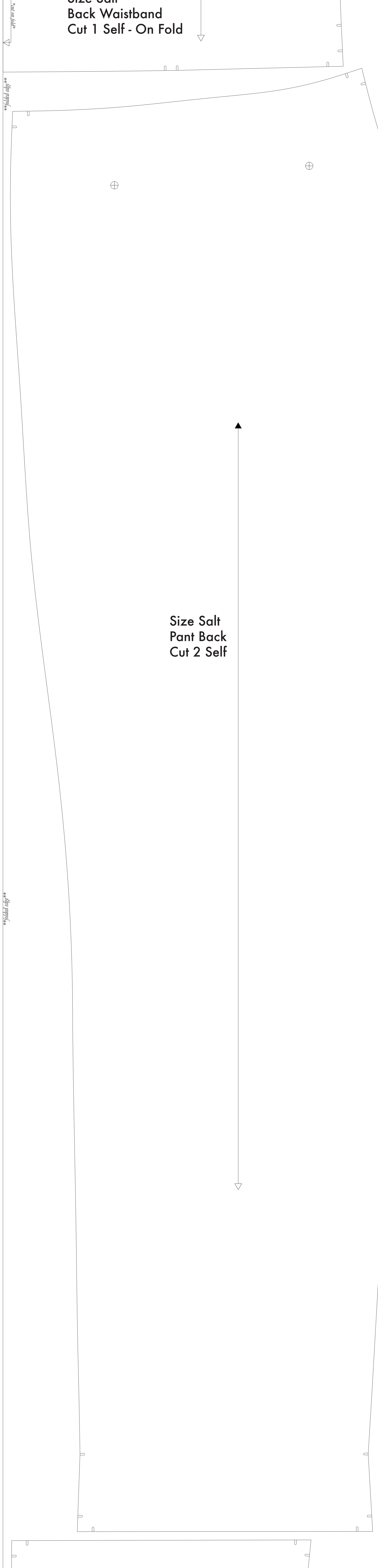
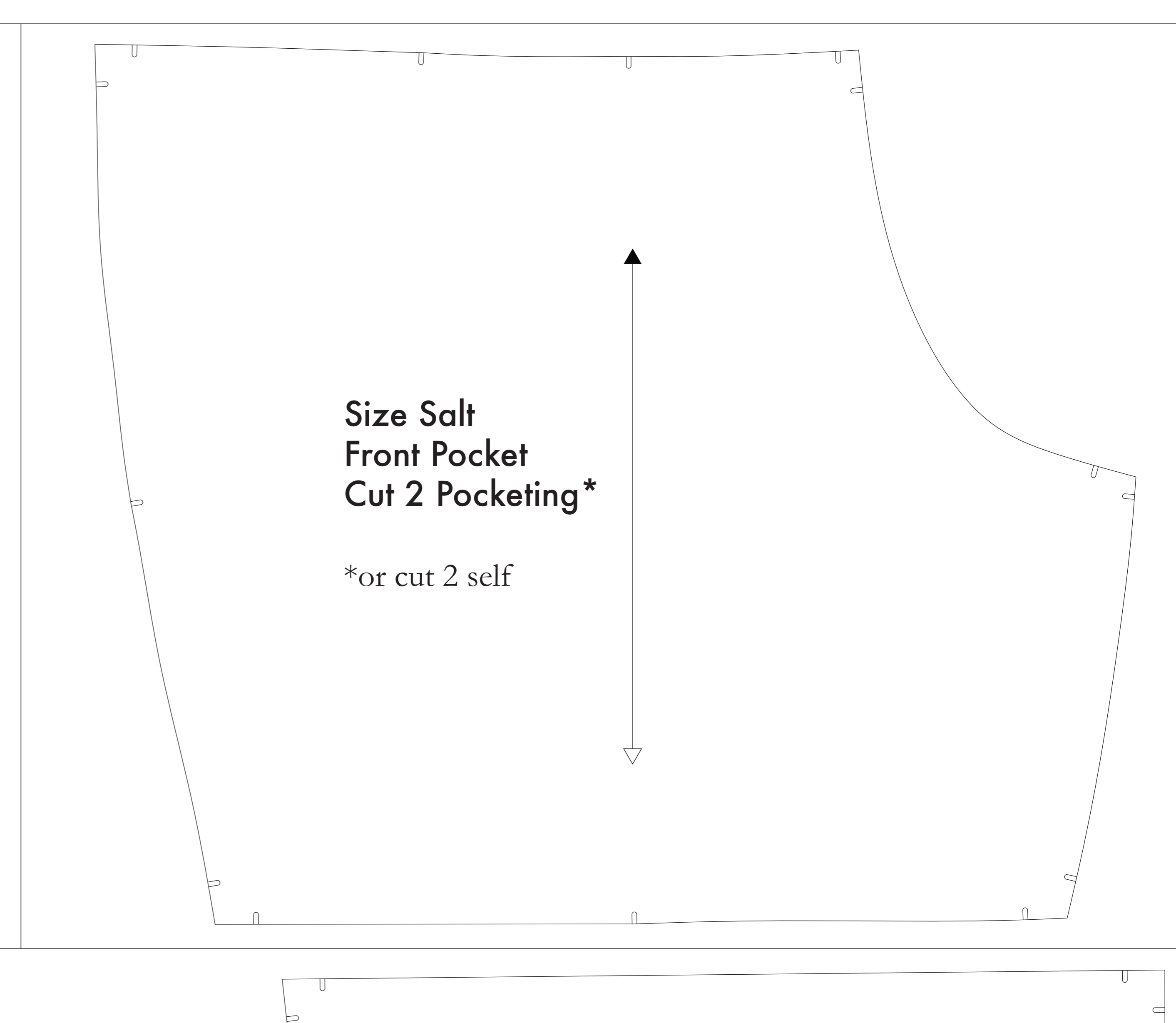
CUTTING INSTRUCTIONS

- Print pattern. You can print this document full on sheets of standard size paper and tape the pieces together, or print on a wide format printer (36" or wider). Print sheets offer the service for approximately \$12. If available to you, the BEST alternative would be using plotter.
- Once your pattern is printed, cut along the outermost rectangle to remove any excess paper. This template should fit exactly on 1/4" Pockets or larger pieces of fabric that have been folded in half. If your fabric is less than 54" wide, you will need to cut the fabric into two pieces and sew them together.
- Fold your fabric in half along the lengthwise grain matching selvage edge to selvage edge. Subdivide in the self-folded edge of fabric. This center marker keeps the fabric from warping or fraying. Allow this an edge that resembles the fringe, though just as frequently, a clearly marked line will be found. Avoid this edge in your cut pieces as the center (especially fabric from the main body of the fabric).
- Place the paper template on top your fabric, matching the folded edge of the fabric with the side of the paper marked "folded edge".
- Place pins throughout the template pinning together both layers of fabric as well as the paper.
- Use around the perimeter of each piece.
- Leaving the pins in place, you will next need to strip each of the wrinkles, taking care to strip beyond the end of the "X" shape.
- Mark all corners and notches, and notches by the following method:
Narrow an "L" shaped marking that are hand-drawn on the paper.
Some marks indicate non-alignable marks, which will not fall on the pattern piece when folded.
- Mark all corners and notches. Using a pin, bring together both layers of fabric and the pattern, mark the center of each double with chalk, wax, or other removable, nonpermanent tool. A tailor's tack may also be used. This corner dot mark, or marking, are indicated by the following symbol: ⊕
- OPTIONAL: Use fusible interfacing pieces. **NOTE C** (as an example) shows pieces that are fusible will be marked with the direction "Cut 2 Fusible" or "Cut 1 Fusible". These pieces are: the Collar, Fly, Fly Facing, Front Pocket Facing, and Front Pocket Backing. To use the fusible, lay the material down with the glue side facing up, then place your pattern down and cut around the perimeter of each piece and notch.
- Use the Front Pocket Bag cut of a fusible pocket material. If you are not using fusible material, then the Front Pocket Bag may be cut alongside your other pattern pieces. Fusible is used to make tabs in case of fabric movement - You will find an example of fusible on any part of the pattern.

NOTE A: FABRIC LESS THAN 54" WIDE
If your fabric is less than 54" wide, you will need to cut each piece into two halves. Print the pieces on one side of the paper and then print the reverse side on the other side of the paper. The width of the fabric should be at least 54" wide. The width of the fabric should be at least 54" wide. The width of the fabric should be at least 54" wide. The width of the fabric should be at least 54" wide.

NOTE B: FUSIBLE INTERFACING OR DIRECTIONAL PATTERN
Fusible interfacing is optional for a finished waistband, collar, and pocket pieces. If you are using fusible interfacing, the pieces should be cut with the grain of the fabric. The pieces should be cut with the grain of the fabric. The pieces should be cut with the grain of the fabric. The pieces should be cut with the grain of the fabric.

NOTE C: USING FUSIBLE INTERFACING
Fusible interfacing is optional for a finished waistband, collar, and pocket pieces. If you are using fusible interfacing, the pieces should be cut with the grain of the fabric. The pieces should be cut with the grain of the fabric. The pieces should be cut with the grain of the fabric. The pieces should be cut with the grain of the fabric.



Before cutting your fabric measure this square to make sure that the pattern is scaled correctly*
*Use a square and measure all corners with large scale images which will offset the fit.

The inner square should measure 4" x 4"
The outer square should measure 12cm x 12cm