

- SUPPLIES NEEDED**
- 3 1/2 YARDS OF 54" WIDE FABRIC
 - ZIPPER
 - REMOVABLE MARKING MEDIUM (chalk, wax, miller's tack, etc.)
 - 3/8" NON-SEPARATING ZIPPER
 - IRON
 - SEWING MACHINE
- Optional:
- 1/2 YARD OF THINNER ZIPPER FABRIC
 - FUSIBLE INTERFACING

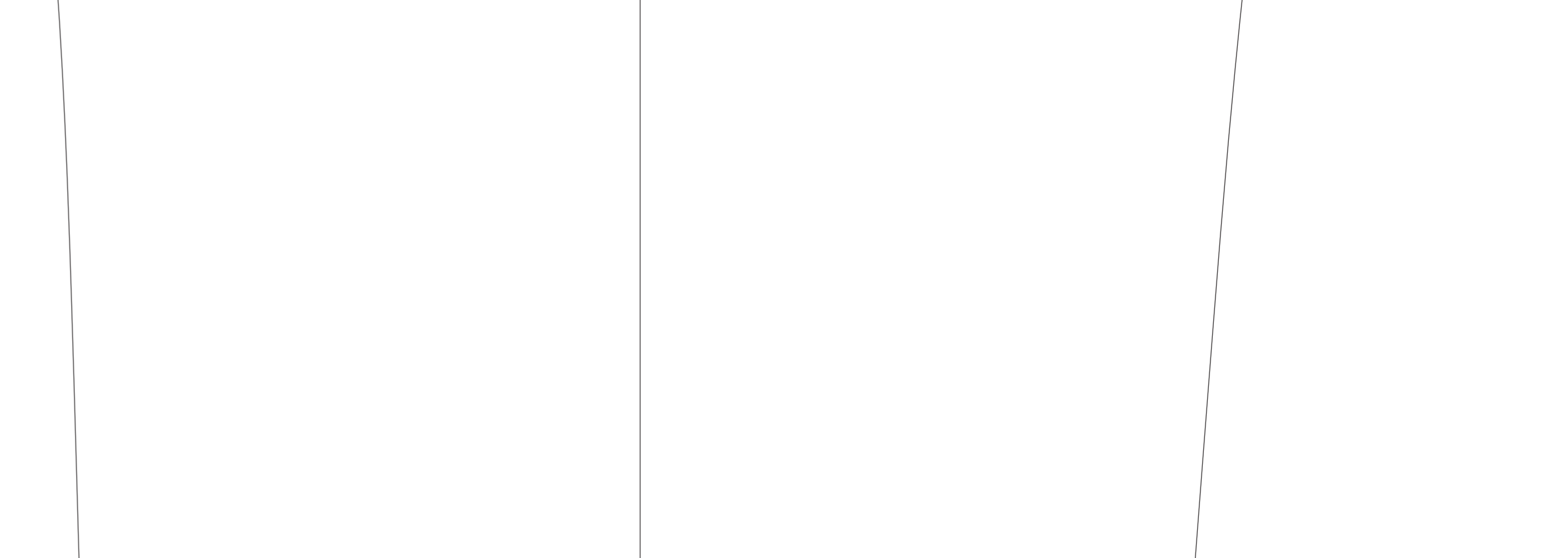
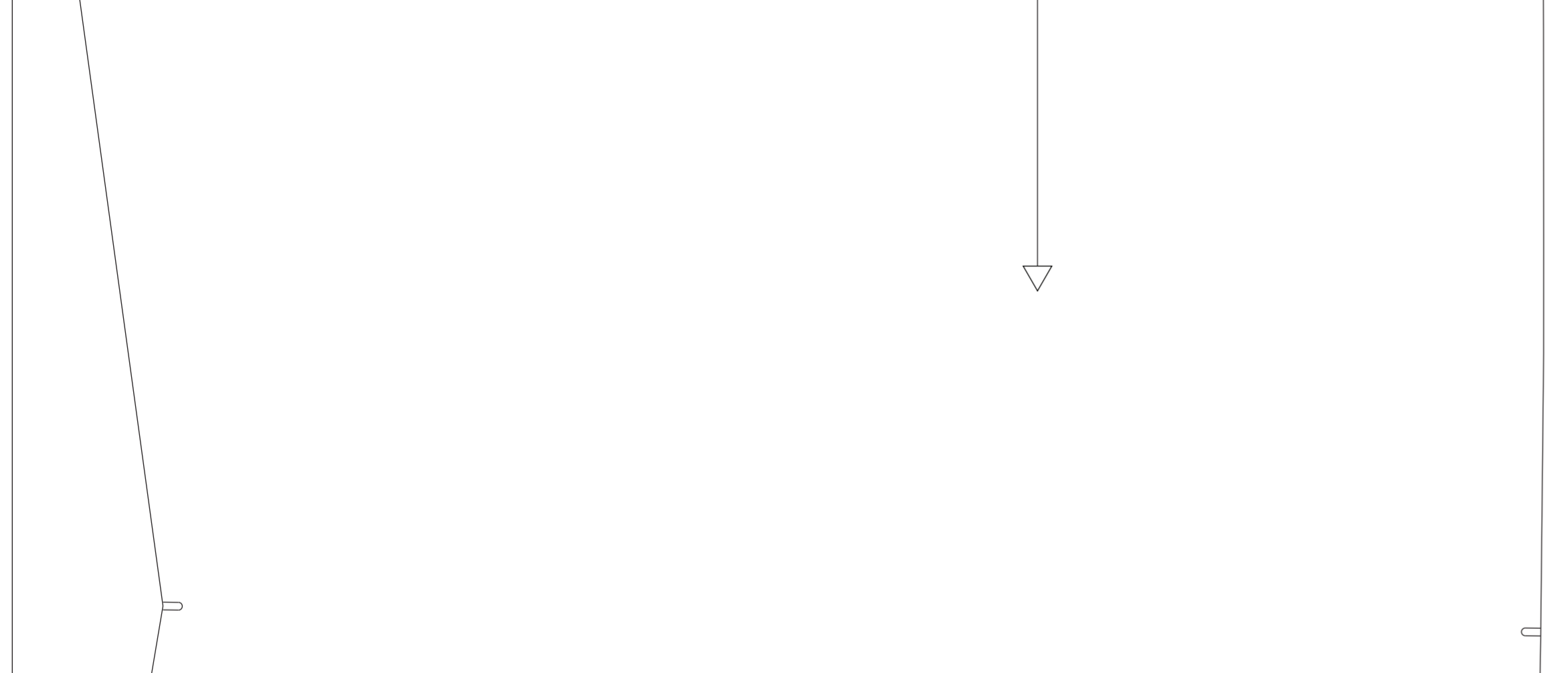
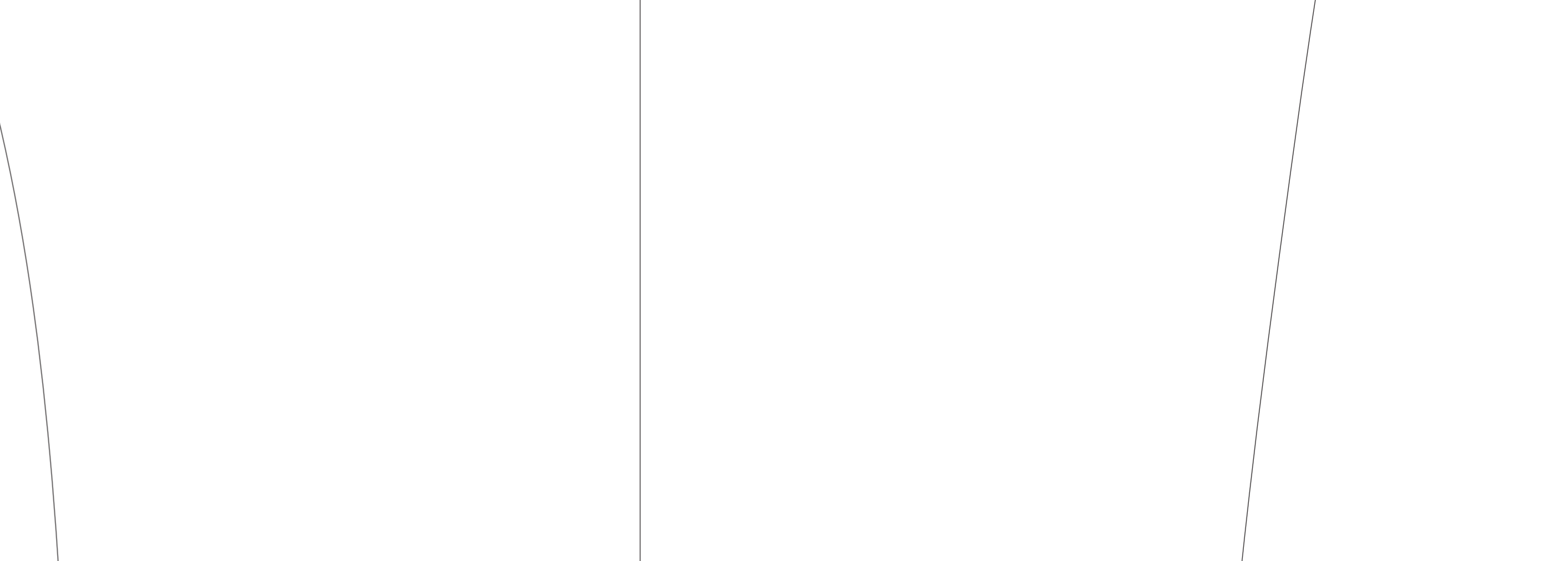
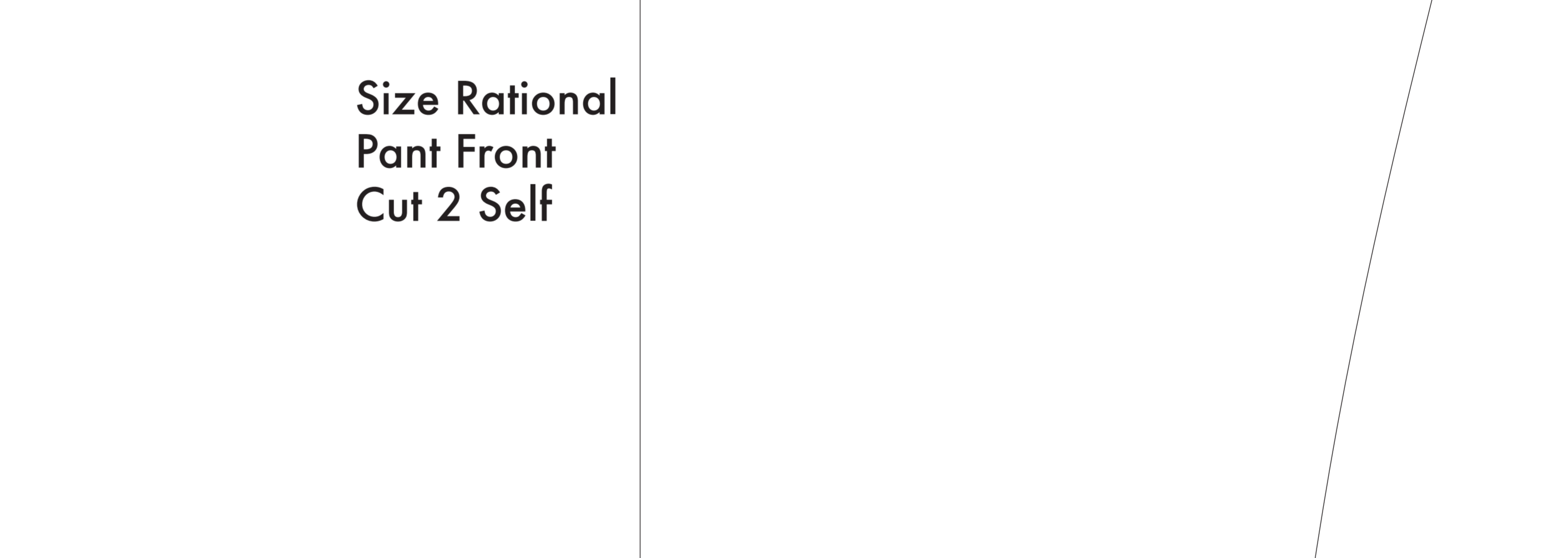
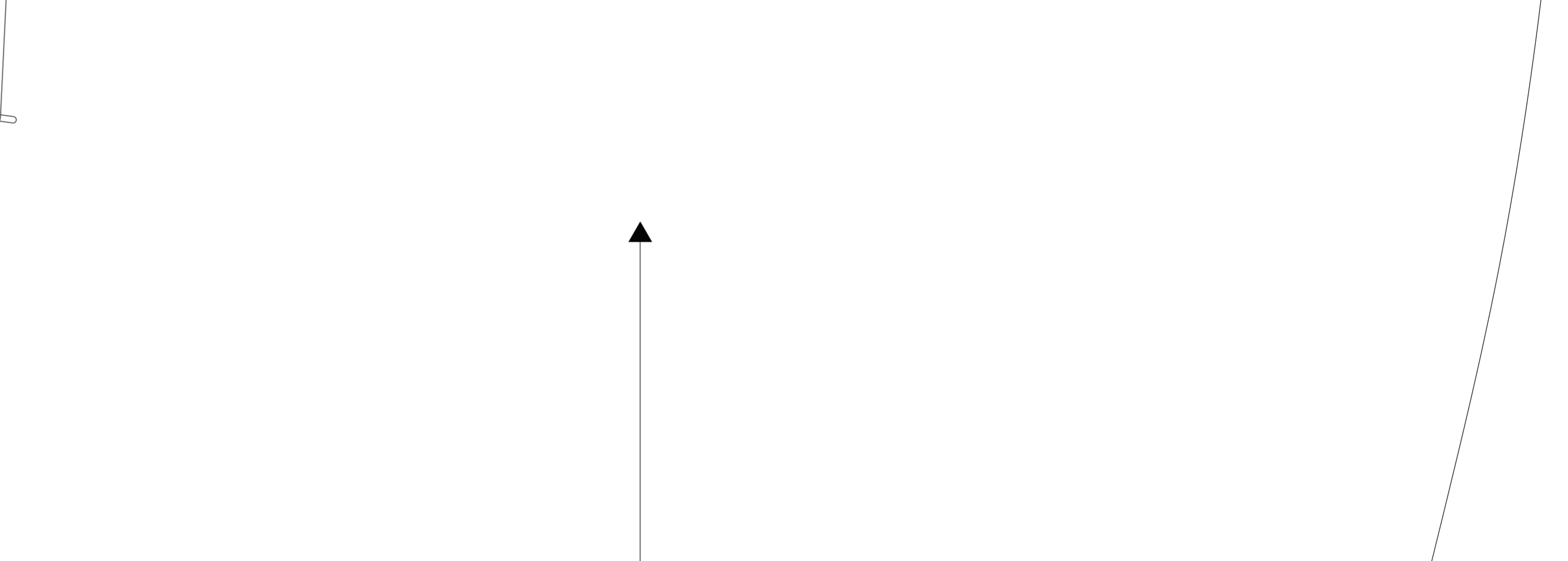
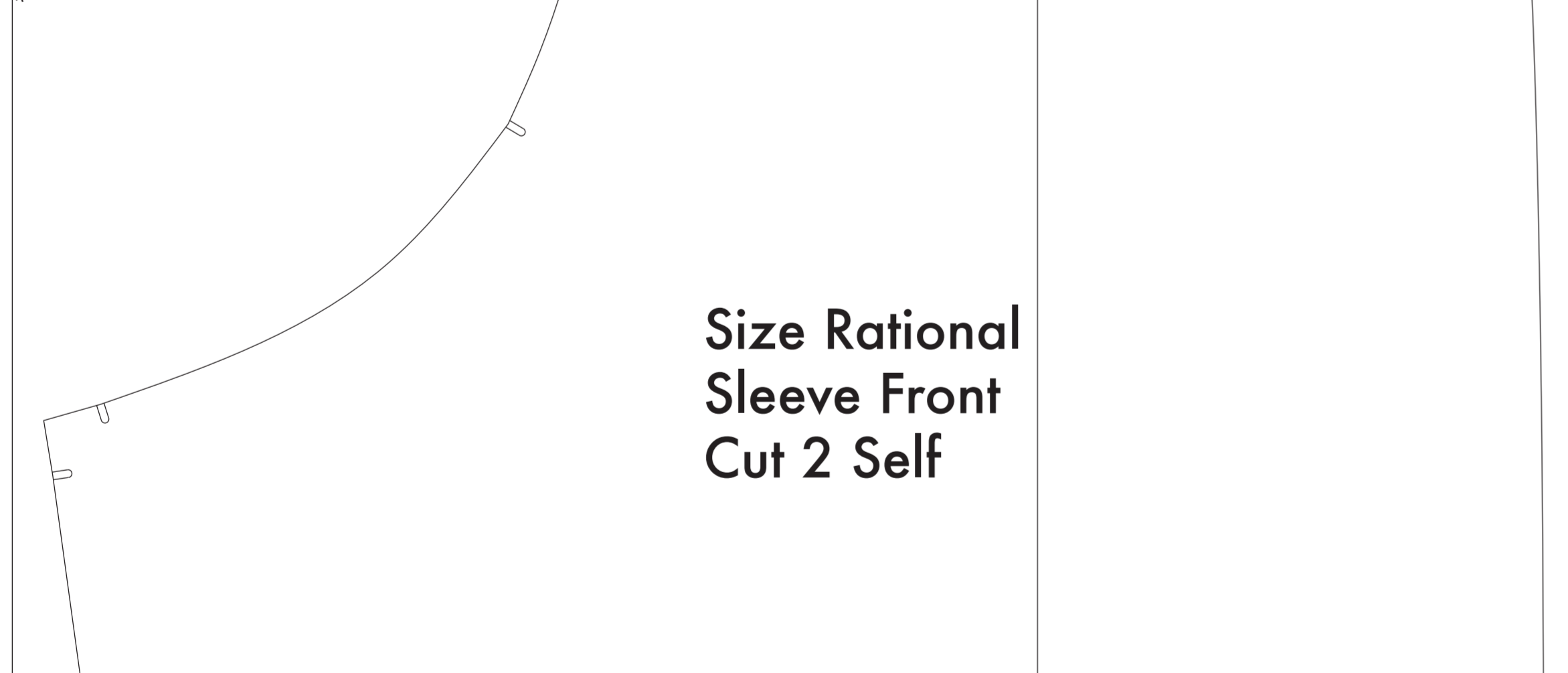
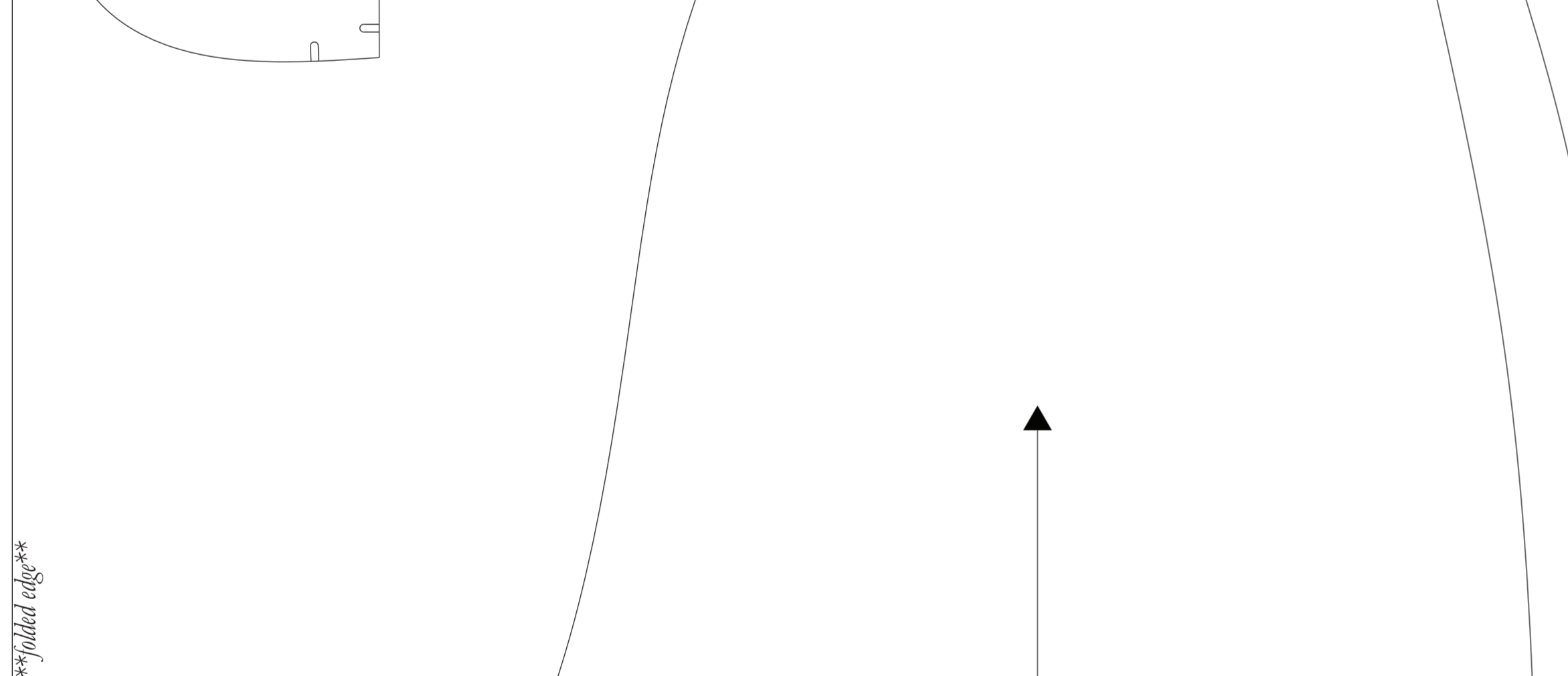
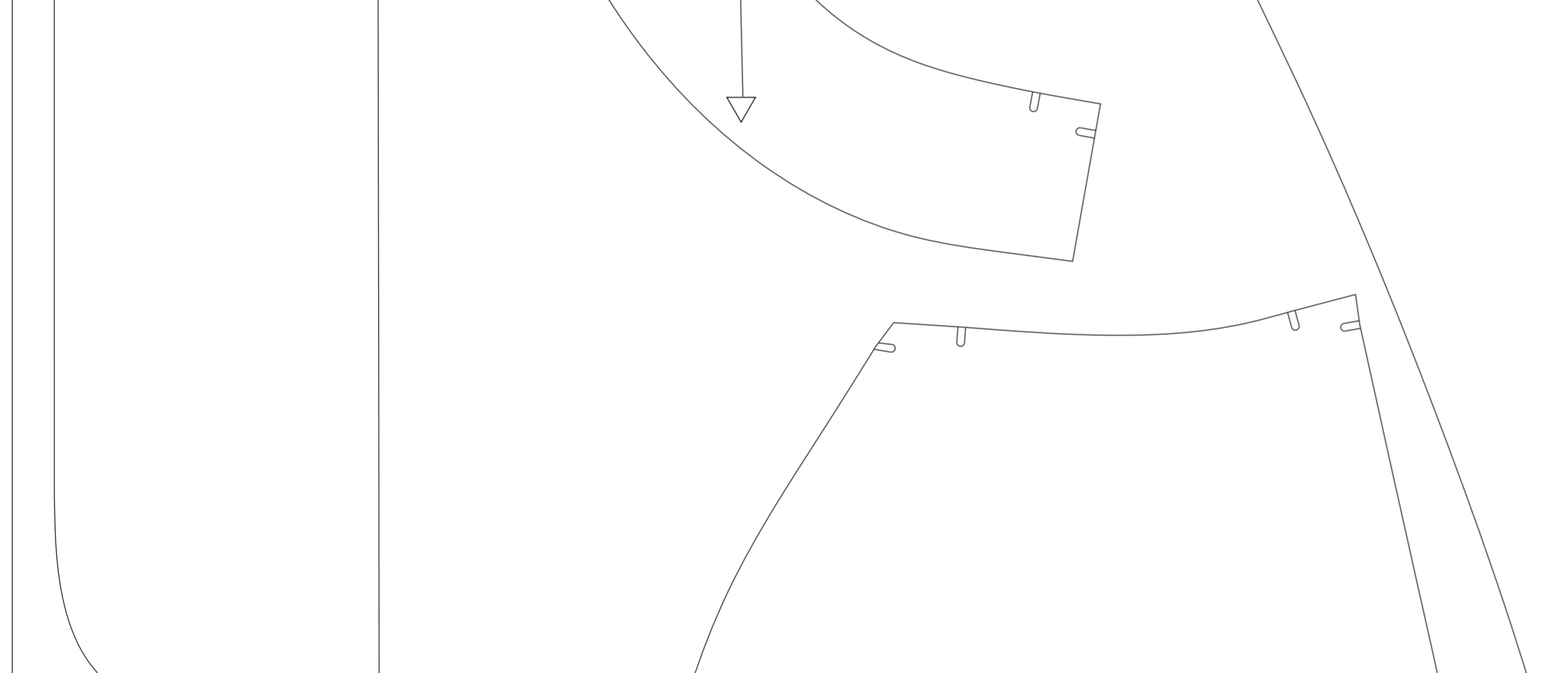
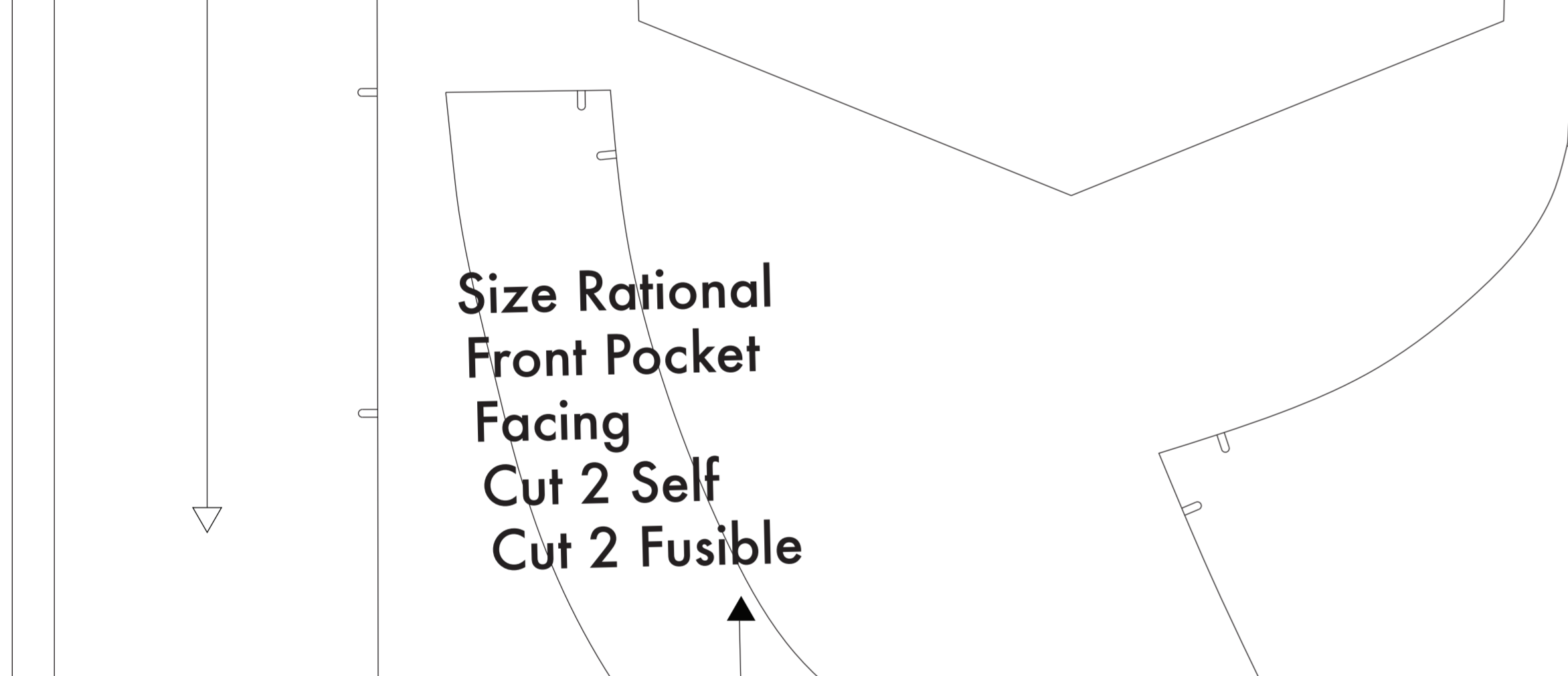
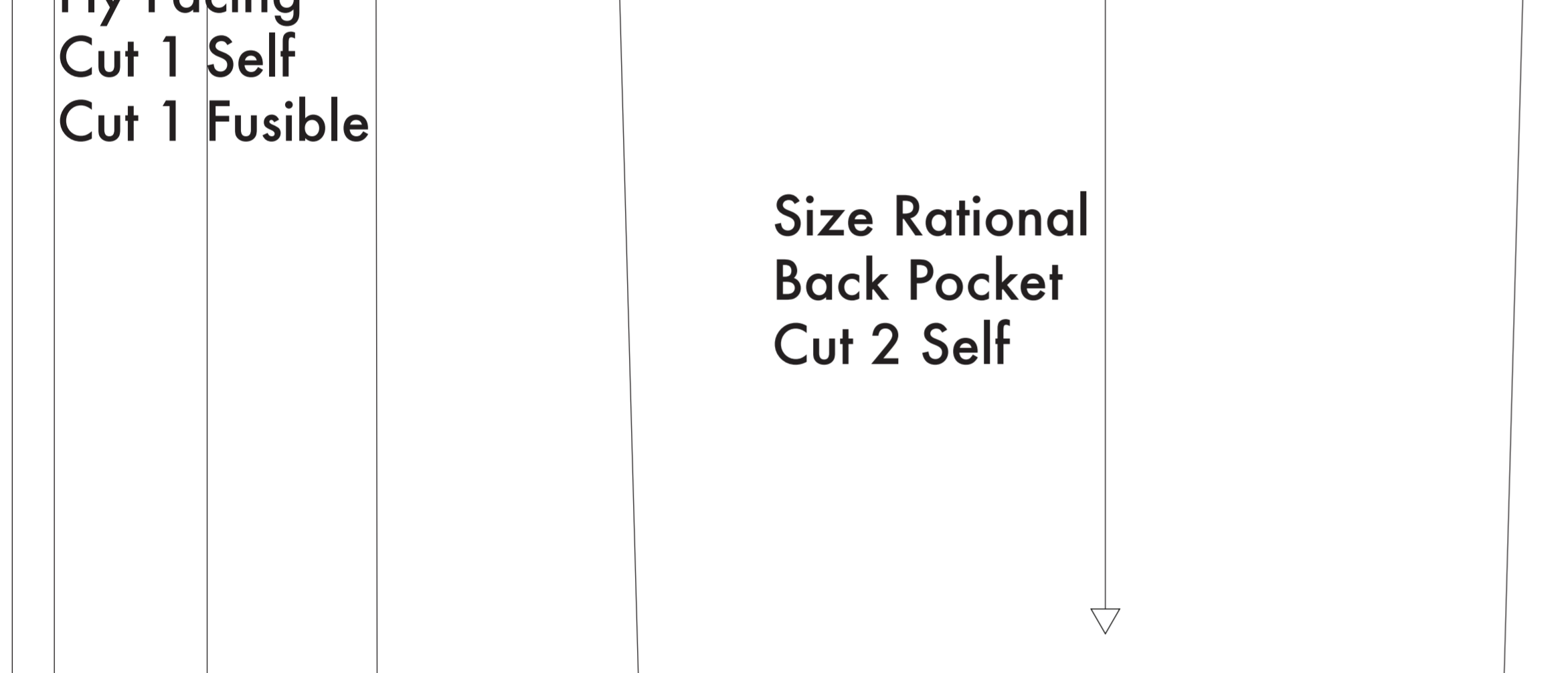
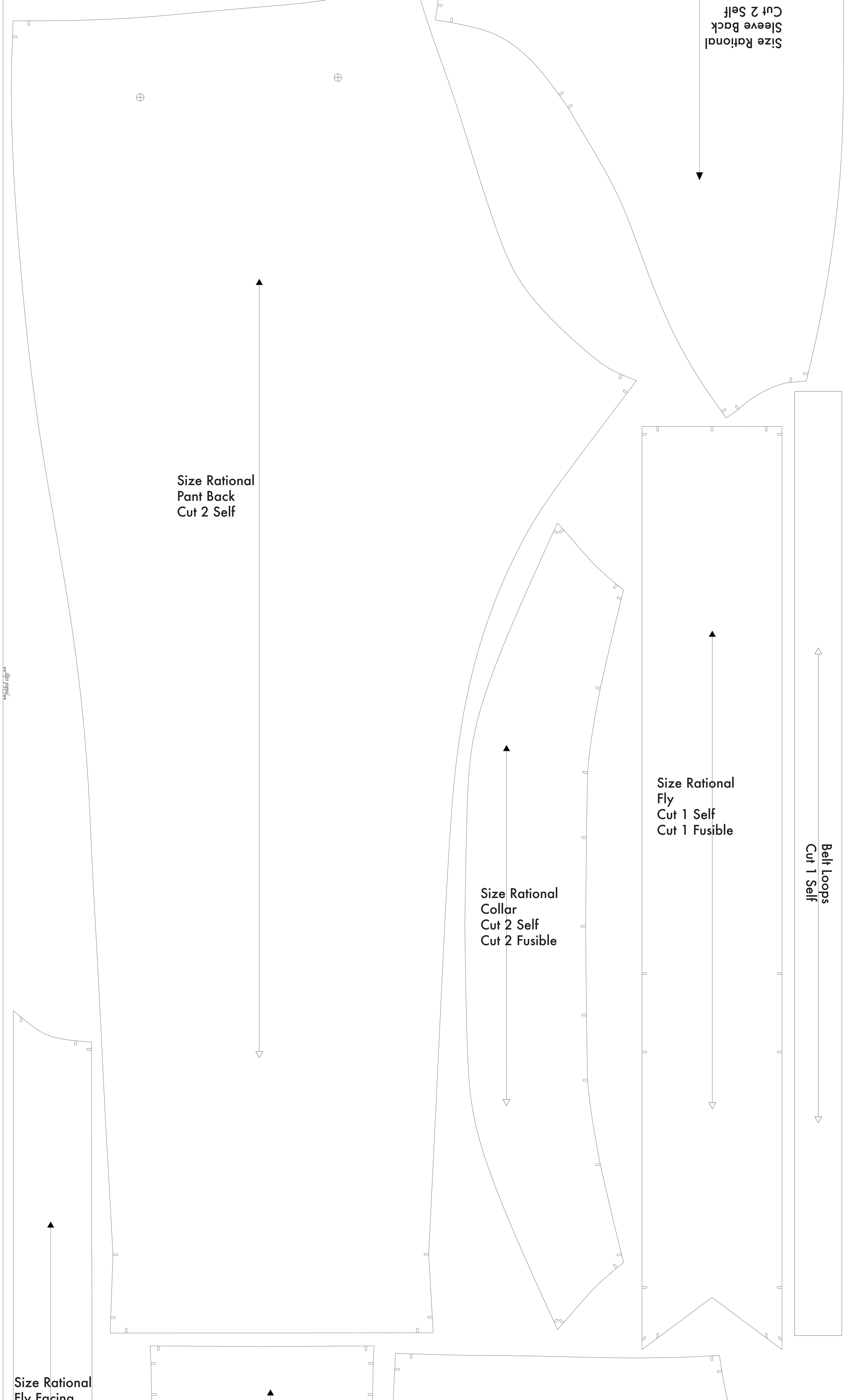
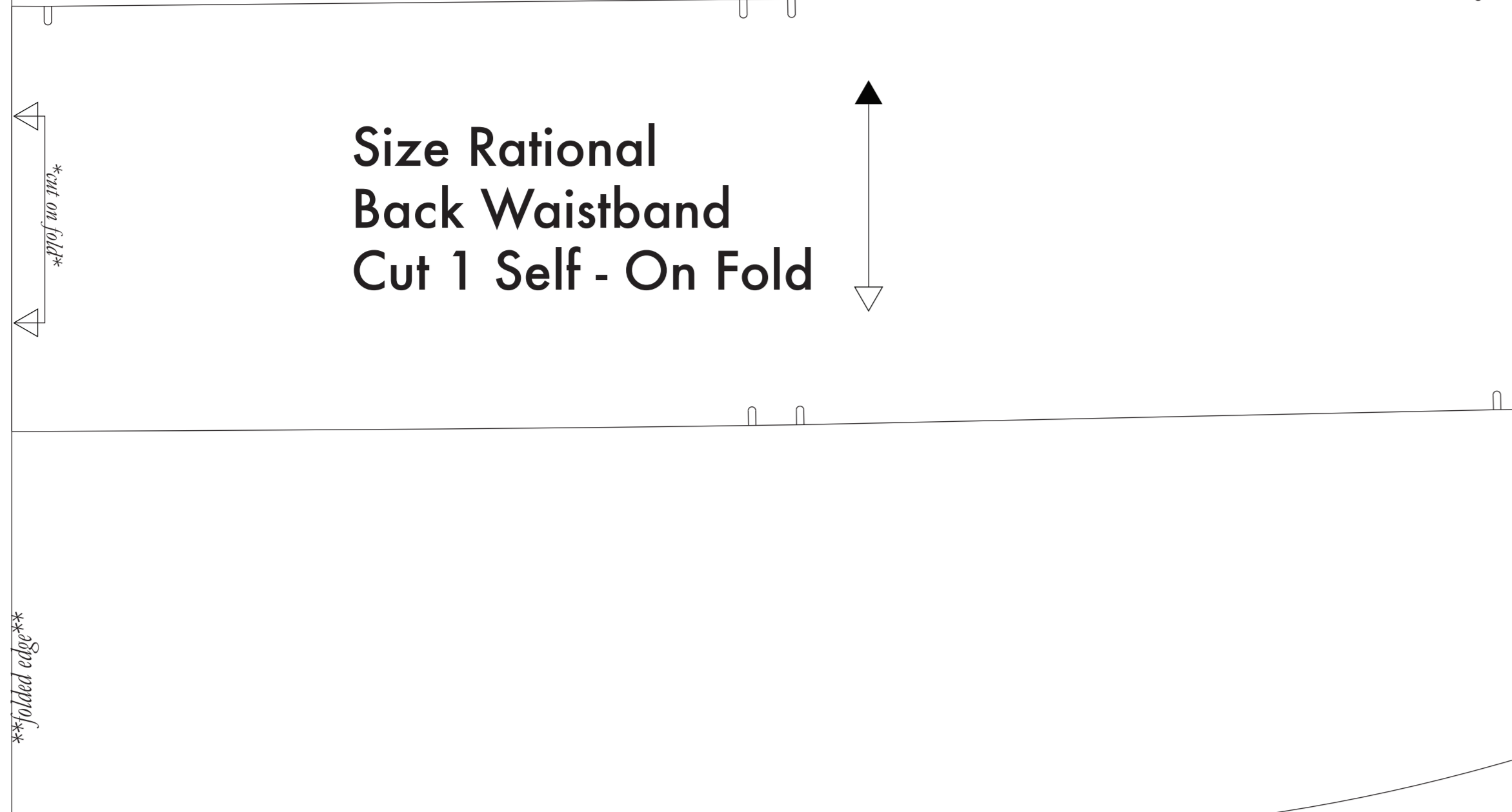
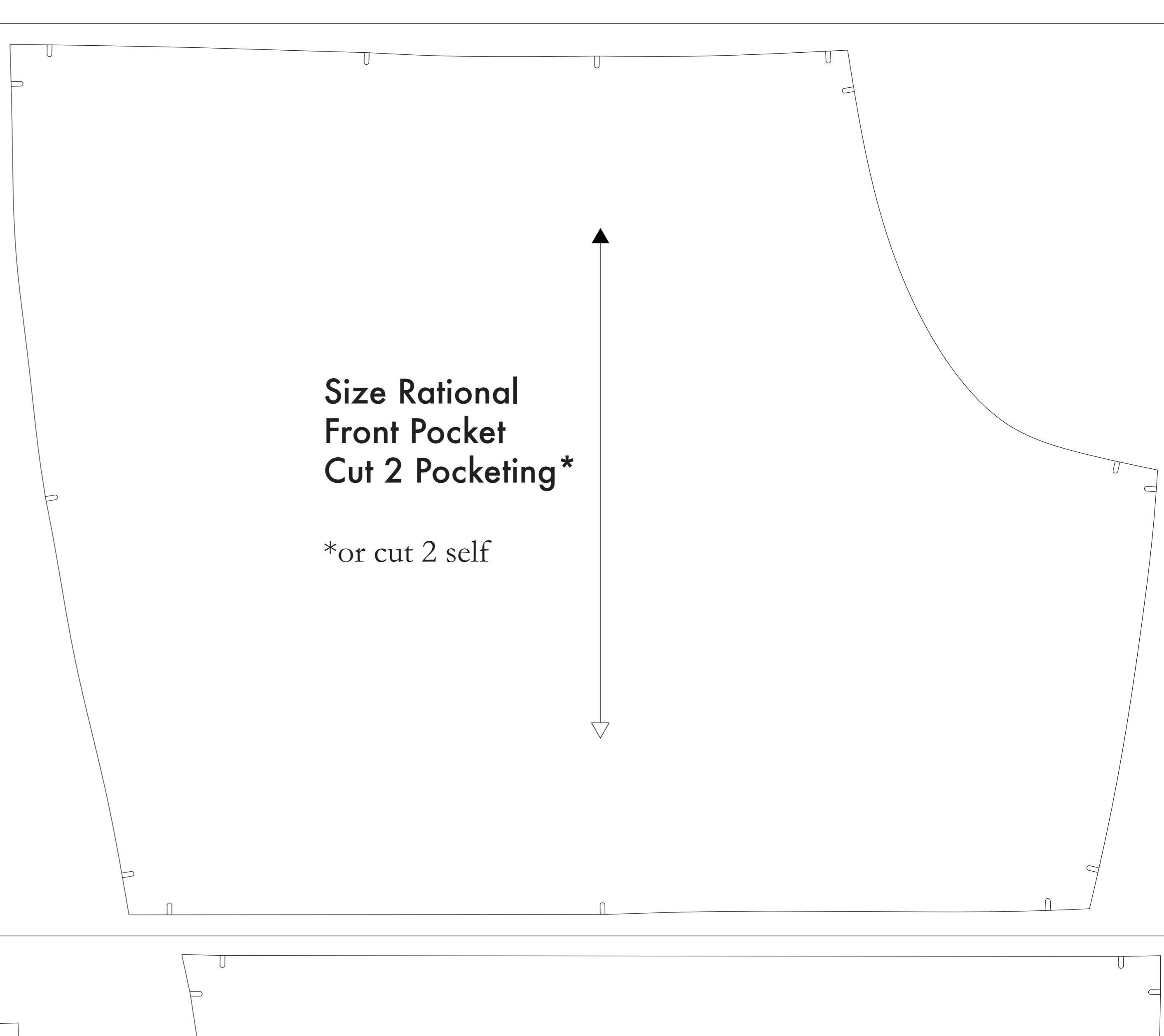
- CUTTING INSTRUCTIONS**
1. Print pattern. Use cut piece dimensions (that are shown of standard size paper and use the piece numbers or print on a wide format printer (36" or wider). Print sheets offer this service for approximately \$12. If available to you, the \$120 version will allow faster printing.
 2. Check your pattern is printed, cut along the outermost rectangle to remove any excess paper. This template should fit exactly on a 36" wide or larger piece of fabric that has been folded in half. If your fabric is less than 36" wide use **NOTE A**. For maximum detail this pattern is laid out flat fabric that does not have a direction. For fabric with a direction, use either a vertical or fabric with a clear directional piece use **NOTE B**.
 3. Fold your fabric in half along the lengthwise grain matching wrong side to wrong side. Set aside in the unfolded edge of fabric. This extra length keeps the fabric from stretching or fraying. Check for an edge that resembles the fringe, though just as frequently, a clearly folded line will be found. Avoid this edge in your cut piece as the excess frequently differs from the main body of the fabric.
 4. Place the paper template on top your fabric, matching the folded edge of the fabric with the side of the paper marked "folded edge".
 5. Place pins throughout the template pinning together both layers of fabric as well as the paper.
 6. Cut around the perimeter of each piece.
 7. Leaving the pins in place, you will need to strip each of the notches, taking care to not strip beyond the end of the "d" shape.

- NOTE A: FABRIC USES MORE THAN 54" WIDE**
- If you have a fabric that is 54" wide or more, you will need to print the pattern on a wide format printer. The pattern pieces are shown on a wide format printer. The pattern pieces are shown on a wide format printer. The pattern pieces are shown on a wide format printer.

- NOTE B: FABRIC WITH A DIRECTION**
- Print the pattern on a wide format printer. The pattern pieces are shown on a wide format printer. The pattern pieces are shown on a wide format printer.

- NOTE C: USING FUSIBLE INTERFACING**
- Print the pattern on a wide format printer. The pattern pieces are shown on a wide format printer. The pattern pieces are shown on a wide format printer.

- NOTE D: USING FUSIBLE INTERFACING**
- Print the pattern on a wide format printer. The pattern pieces are shown on a wide format printer. The pattern pieces are shown on a wide format printer.

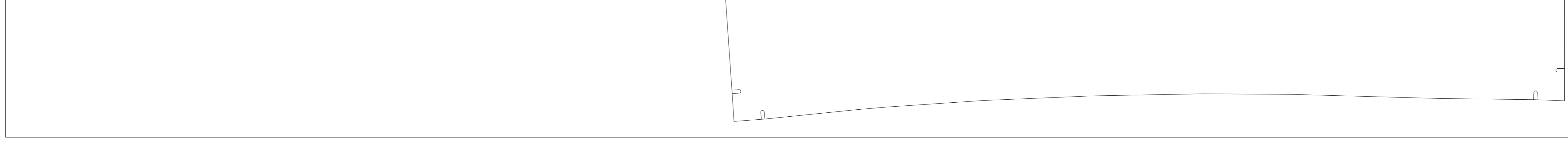
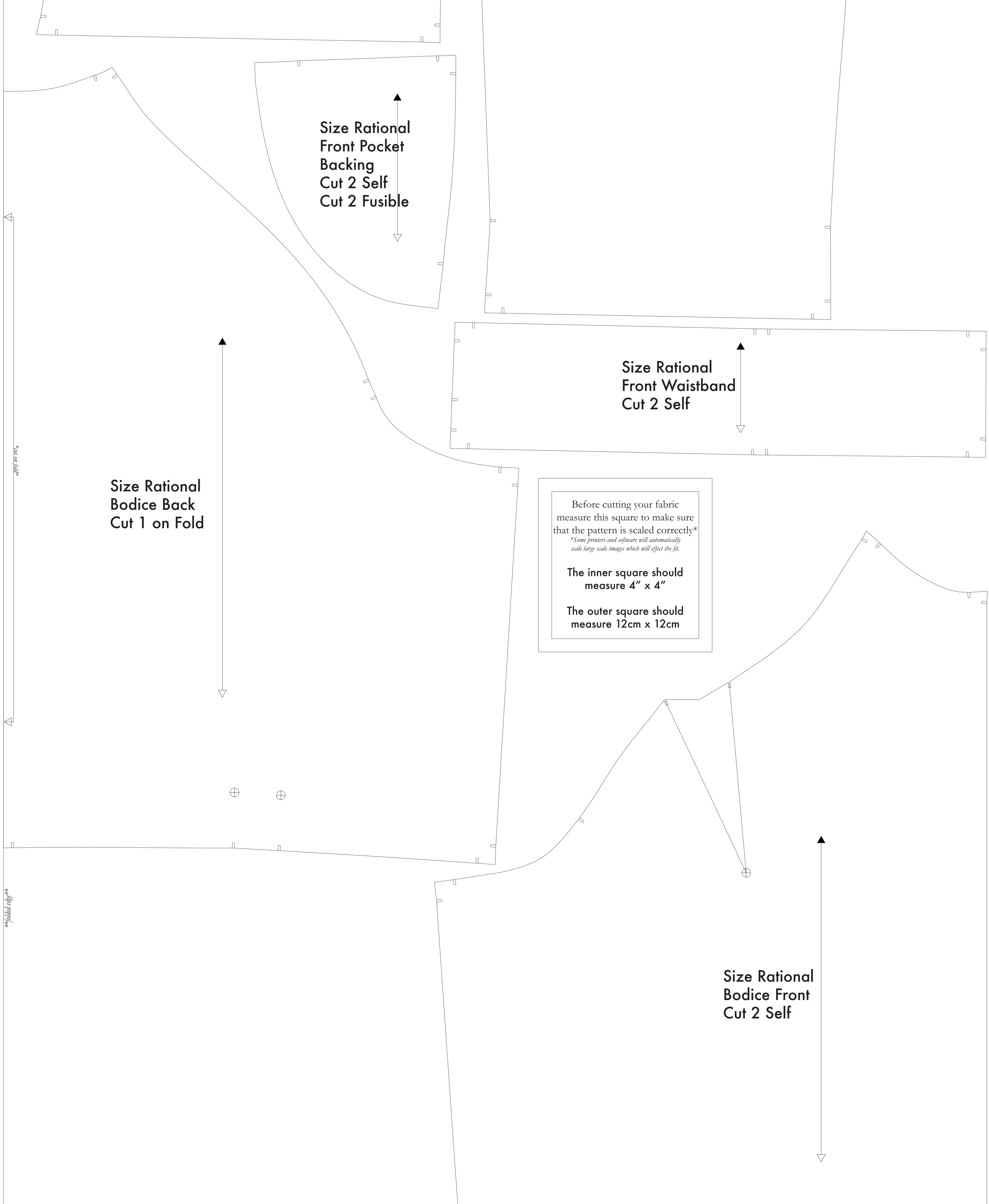


Before cutting your fabric measure this square to make sure that the pattern is scaled correctly*

*Some printers will distort and unintentionally make large images which will affect the fit.

The inner square should measure 4" x 4"

The outer square should measure 12cm x 12cm



Belt Loops Cut 1 Self

Size Rational Sleeve Back Cut 2 Self