

- SUPPLIES NEEDED**
- 3/4" YARDS OF 54" WIDE FABRIC
 - SHARP SCISSORS
 - REMOVABLE MARKING MEDIUM (chalk, wax, tailor's tack, etc.)
 - 1/2" NON-SEPARATING ZIPPER
 - THREAD
 - SEWING MACHINE
- OPTIONAL:**
- 1/2" YARDS OF THINNER POCKET FABRIC
 - FUSIBLE INTERFACING

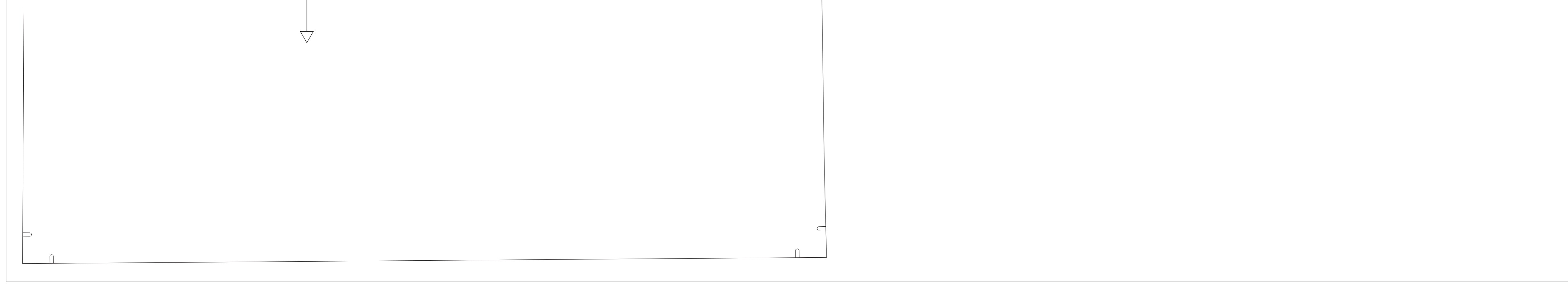
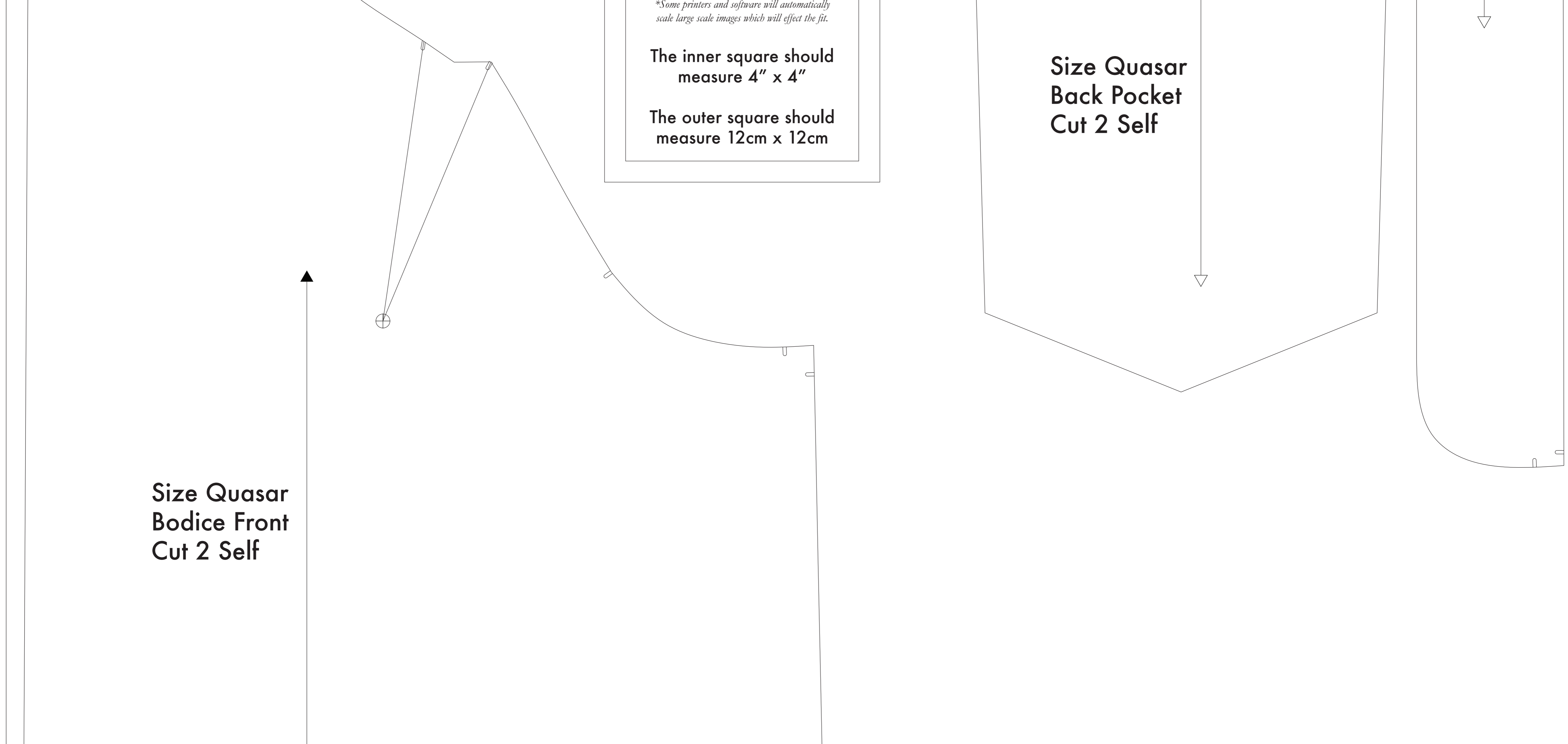
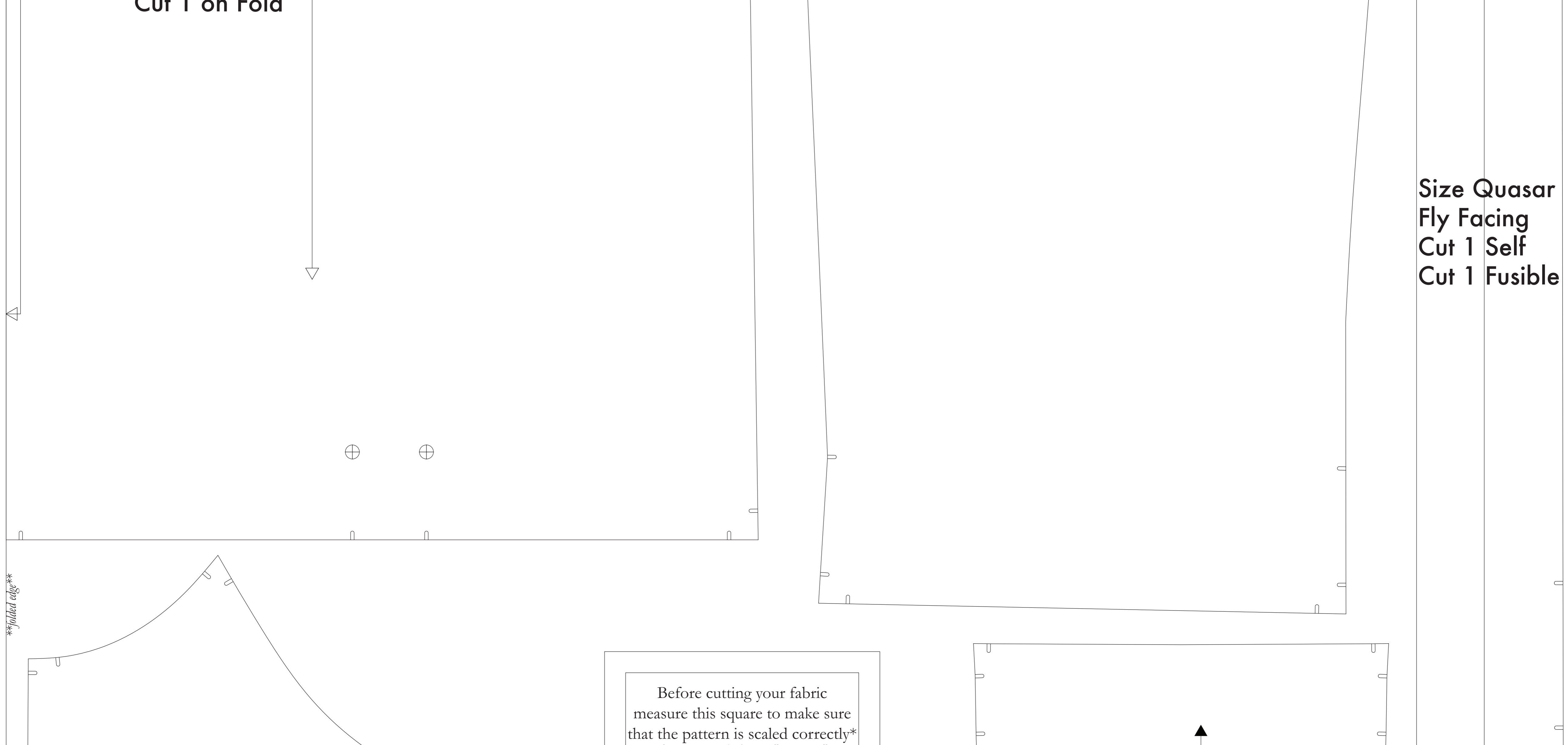
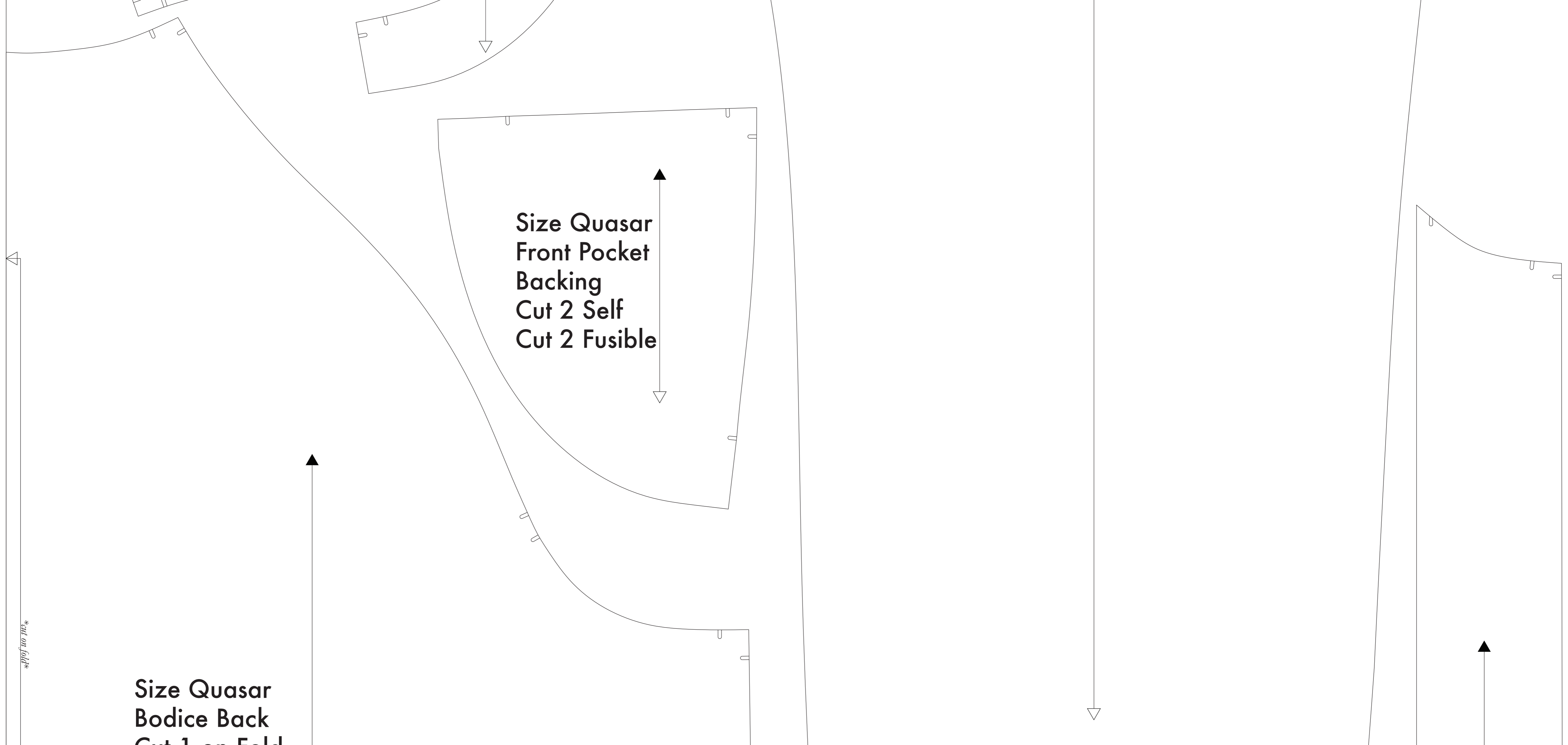
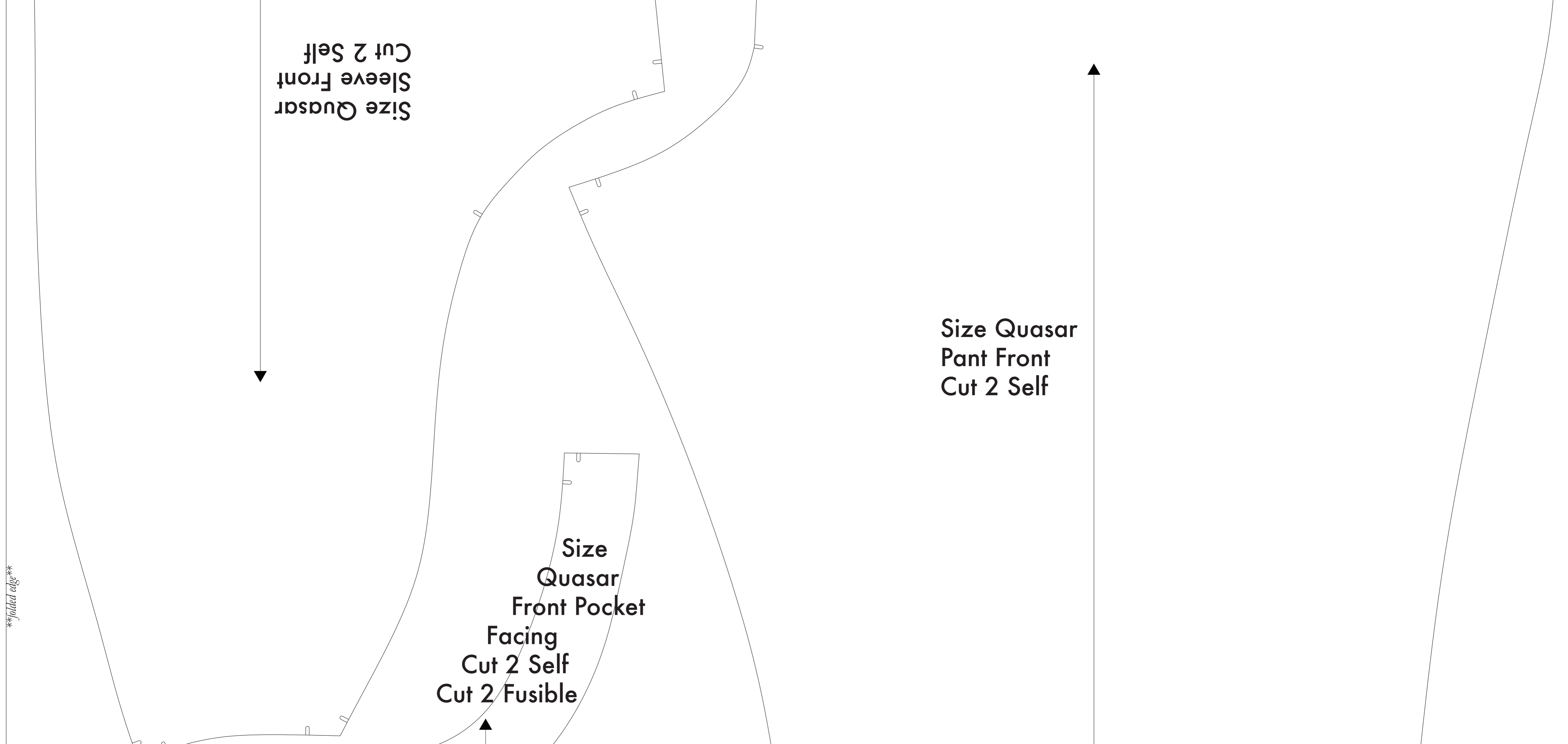
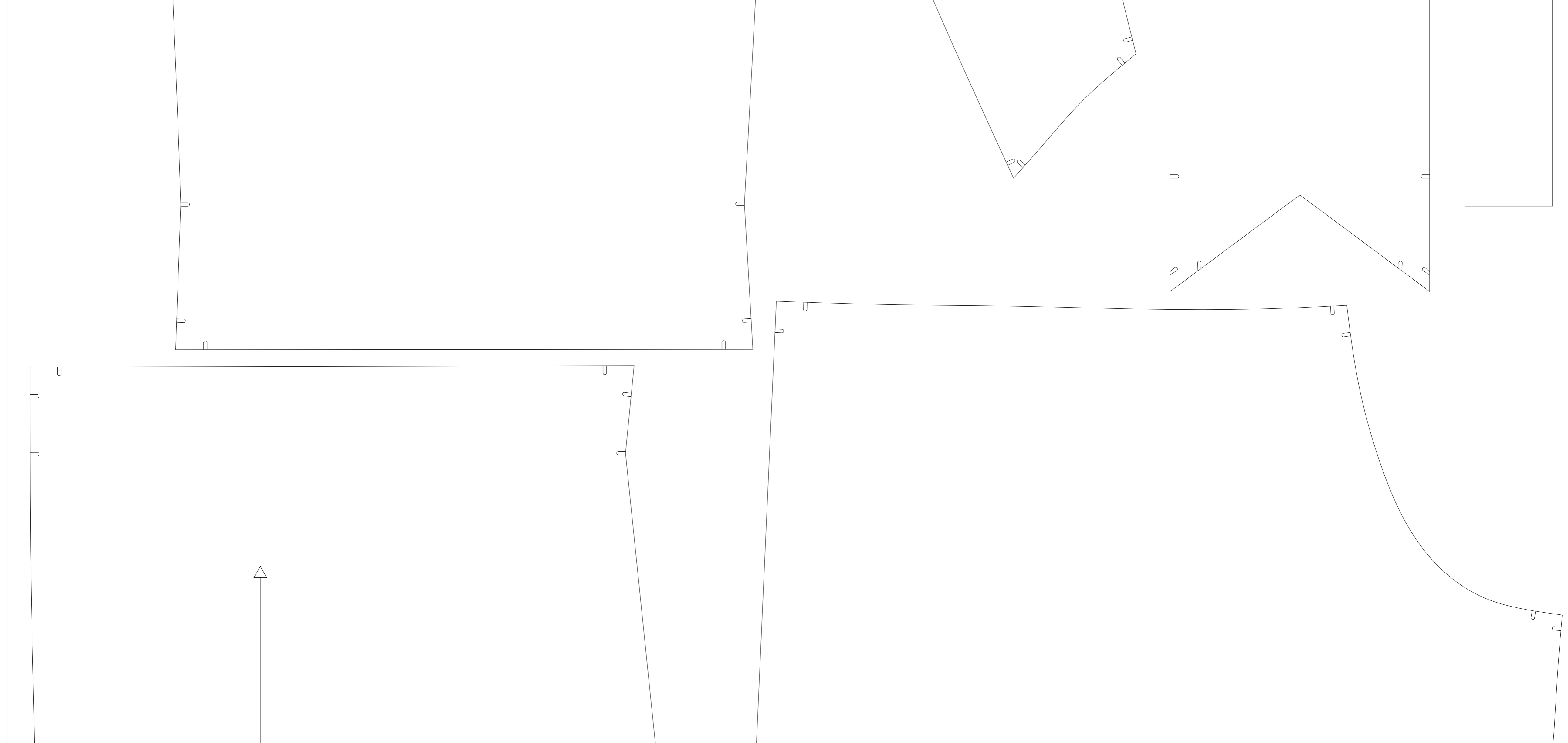
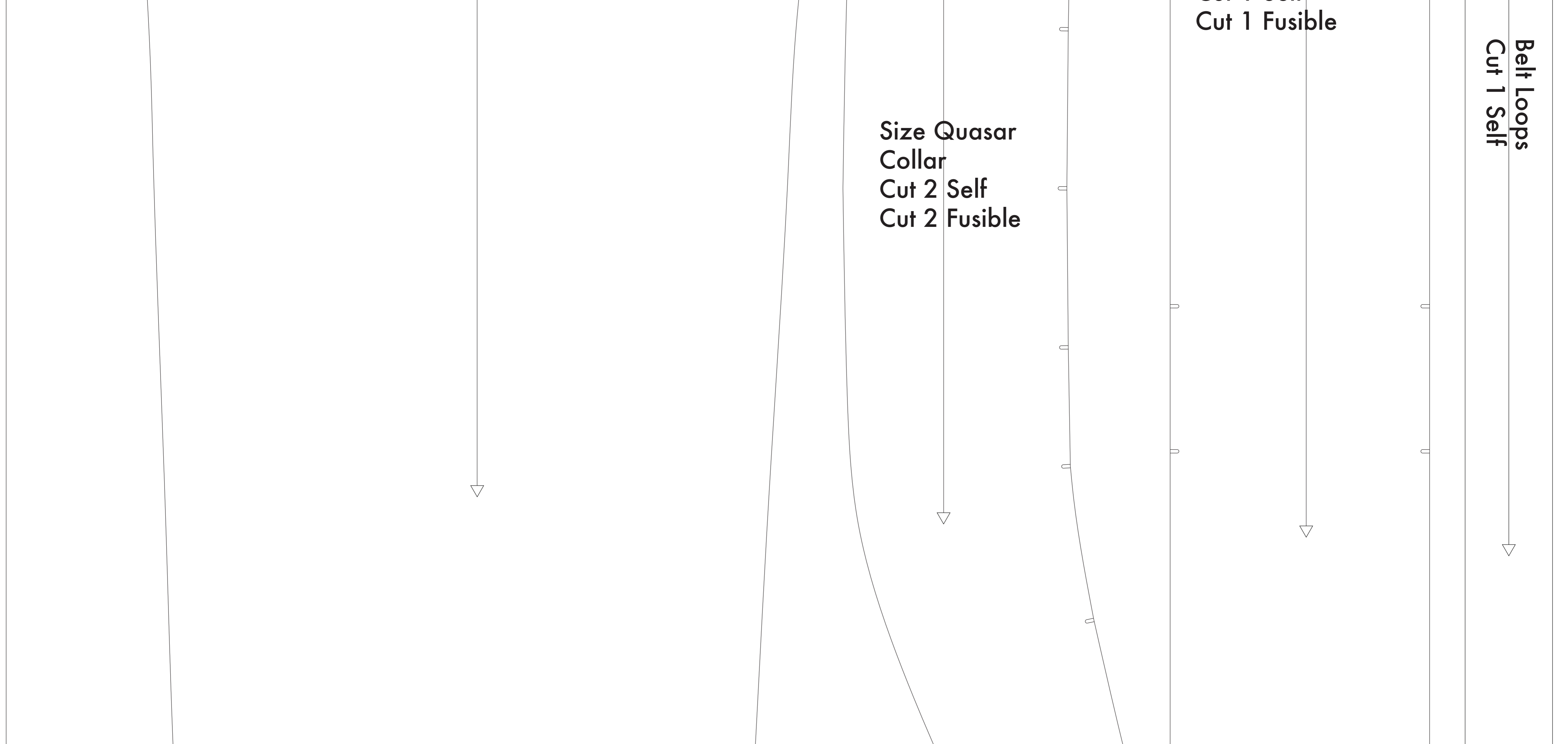
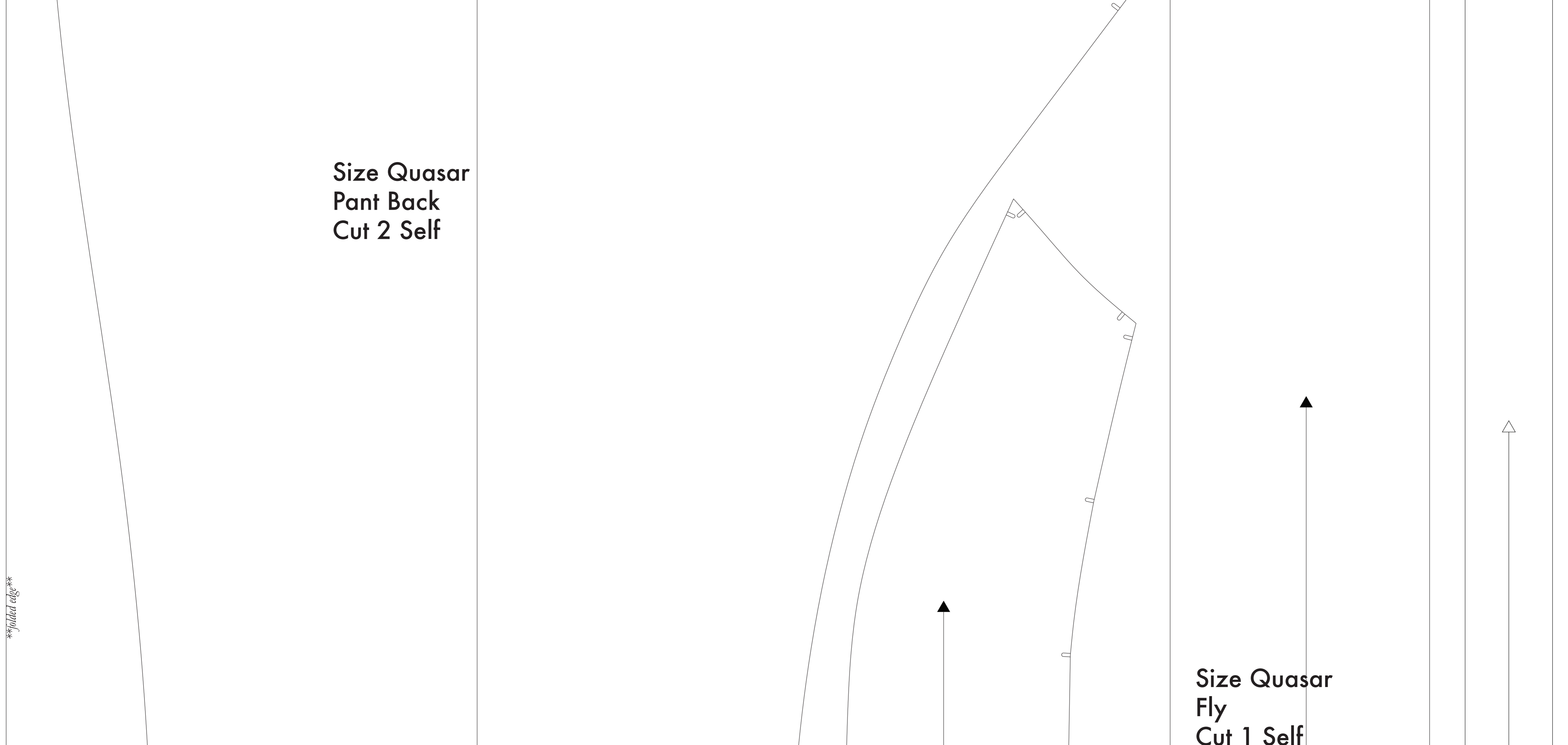
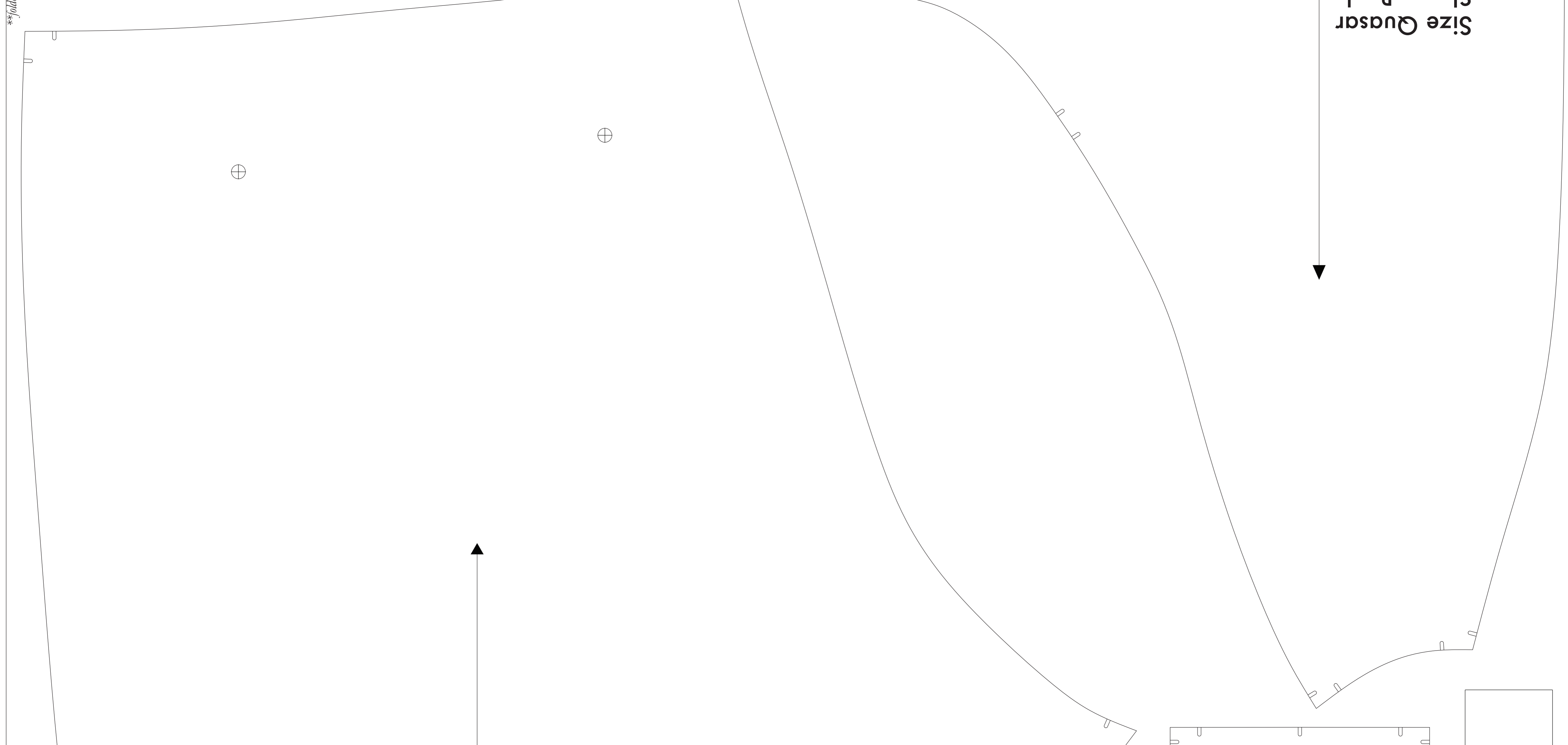
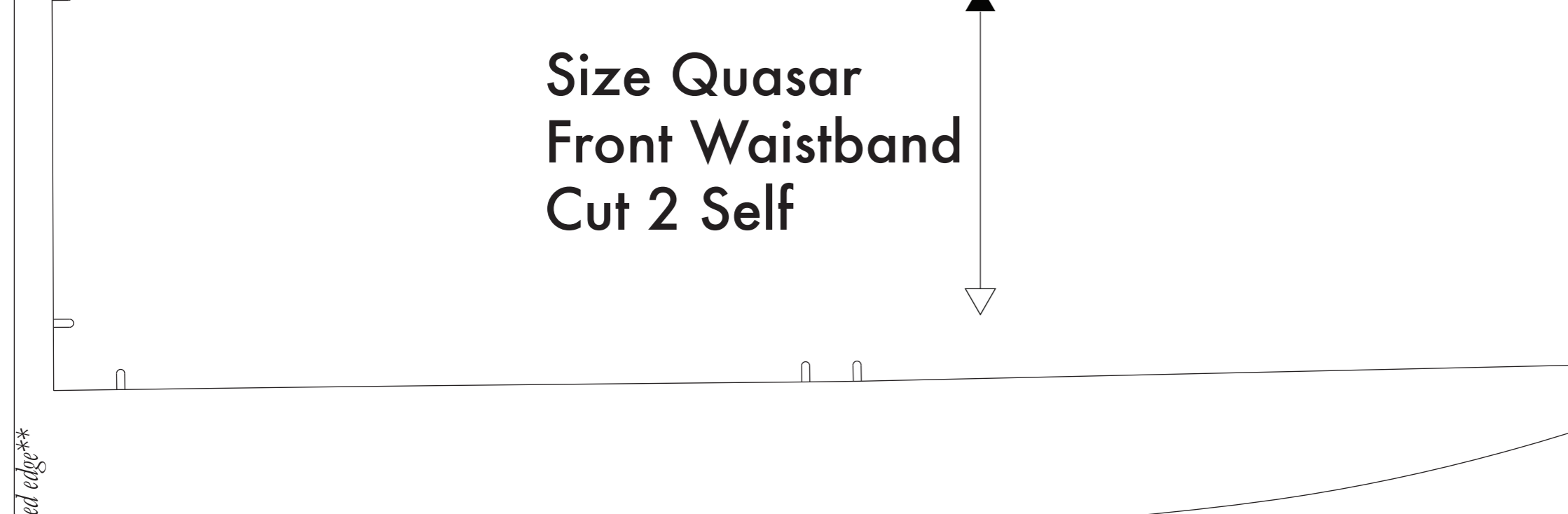
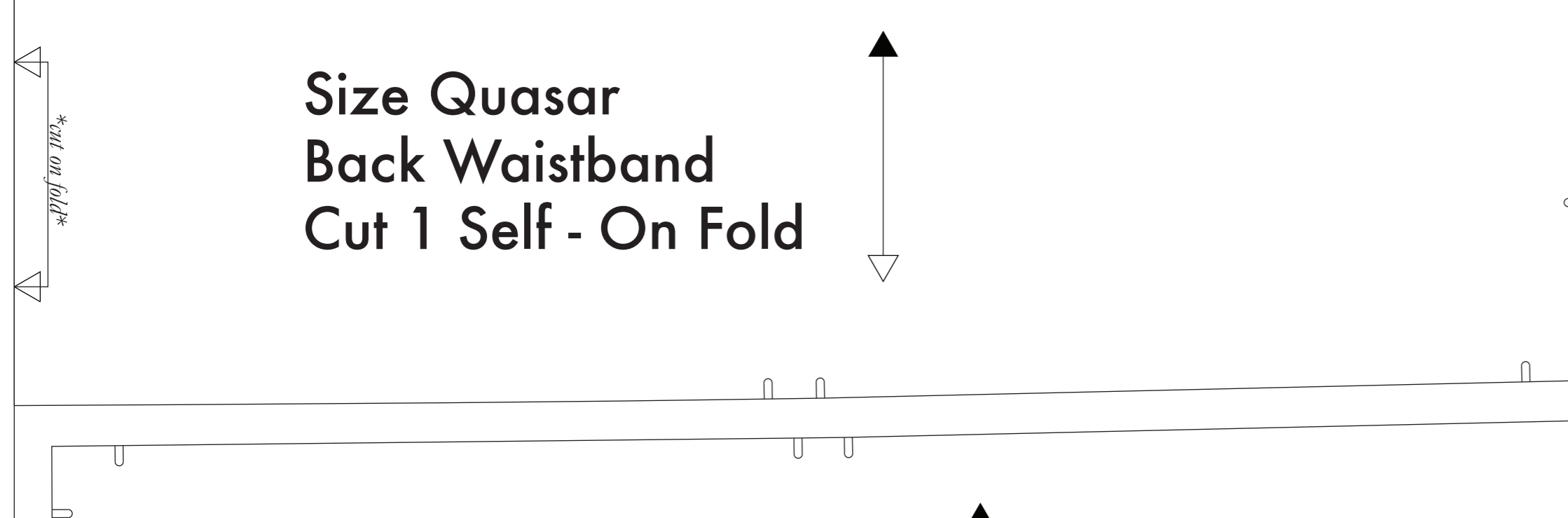
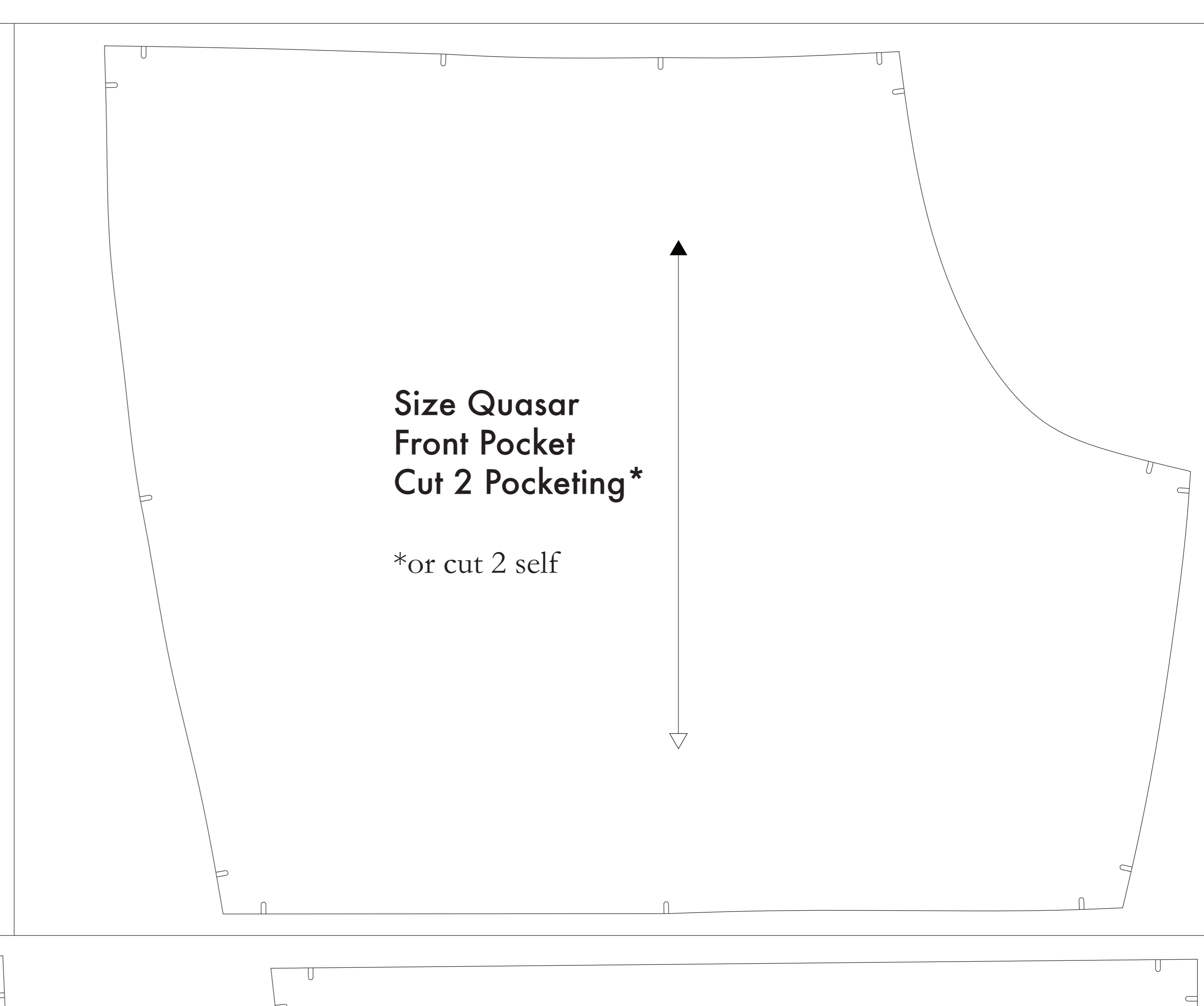
CUTTING INSTRUCTIONS

1. Print pattern: You can print this document (and all sheets of standard size paper) and tape the pieces together, or print on a wide-format printer (24" or wider). Please always refer to this manual for approximately \$12. If available to you, the \$120 version is available for printing.
2. Once your pattern is printed, cut along the contour rectangle to remove any excess paper. This template should fit exactly on a 36" wide or larger piece of fabric that has been folded in half. If your fabric is less than 36" wide, **NOTE A**. For maximum yield this pattern is laid out for fabric that does not have a direction. For fabric with a nap, such as velvet or tulle, or fabric with a clear directional print, see **NOTE B**.
3. Fold your fabric in half along the longwise grain matching selvage edge to selvage edge. Schedule in the self-fabric edge of fabric. The curves backings for the fabric from underneath or facing. Once it has an edge that resembles any fringe, though just as frequently, a clearly finished line will be found. Avoid this edge in your cut pieces as the texture frequently differs from the rest of the fabric.
4. Place the paper template on your fabric, matching the folded edge of the fabric with the side of the paper marked "folded edge".
5. Place pins throughout the template pinning together both layers of fabric as well as the paper.
6. Cut around the perimeter of each piece.
7. Leaving the pins in place, you will next need to strip each of the rectangles, taking care to not strip beyond the end of the 1/2" margin.

NOTE A: FABRIC LESS THAN 36" WIDE
If your fabric is less than 36" wide, you will need to cut out the pattern pieces individually from the paper template and then transfer them to your fabric. For the paper template, please refer to the instructions on the back of the pattern pieces. For the fabric, please refer to the instructions on the back of the pattern pieces.

NOTE B: FABRIC WITH NAAP OR DIRECTIONAL PATTERN
If your fabric has a nap or a directional pattern, please refer to the instructions on the back of the pattern pieces. For the fabric, please refer to the instructions on the back of the pattern pieces.

NOTE C: USING FUSIBLE INTERFACING
Fusible interfacing is a material that is used to stiffen, stabilize, and reinforce areas of a garment. It is used to reinforce areas of a garment that are subject to stress or strain, such as the collar, cuffs, and pocket flaps. It is used to reinforce areas of a garment that are subject to stress or strain, such as the collar, cuffs, and pocket flaps.



Before cutting your fabric measure this square to make sure that the pattern is scaled correctly!
*Use printer and software will automatically scale large with image which will affect the fit.
The inner square should measure 4" x 4"
The outer square should measure 12cm x 12cm