

- SUPPLIES NEEDED**
- 4 YARDS OF 24" WIDE FABRIC
  - SHARP SCISSORS
  - REMOVABLE MARKING MEDIUM (chalk, wax, tailor's tack, etc.)
  - 1/2" NON-SEPARATING ZIPPER
  - THREAD
  - SEWING MACHINE
- optional:
- 1/2" YARD OF THINNER POCKET FABRIC
  - FUSIBLE INTERFACING

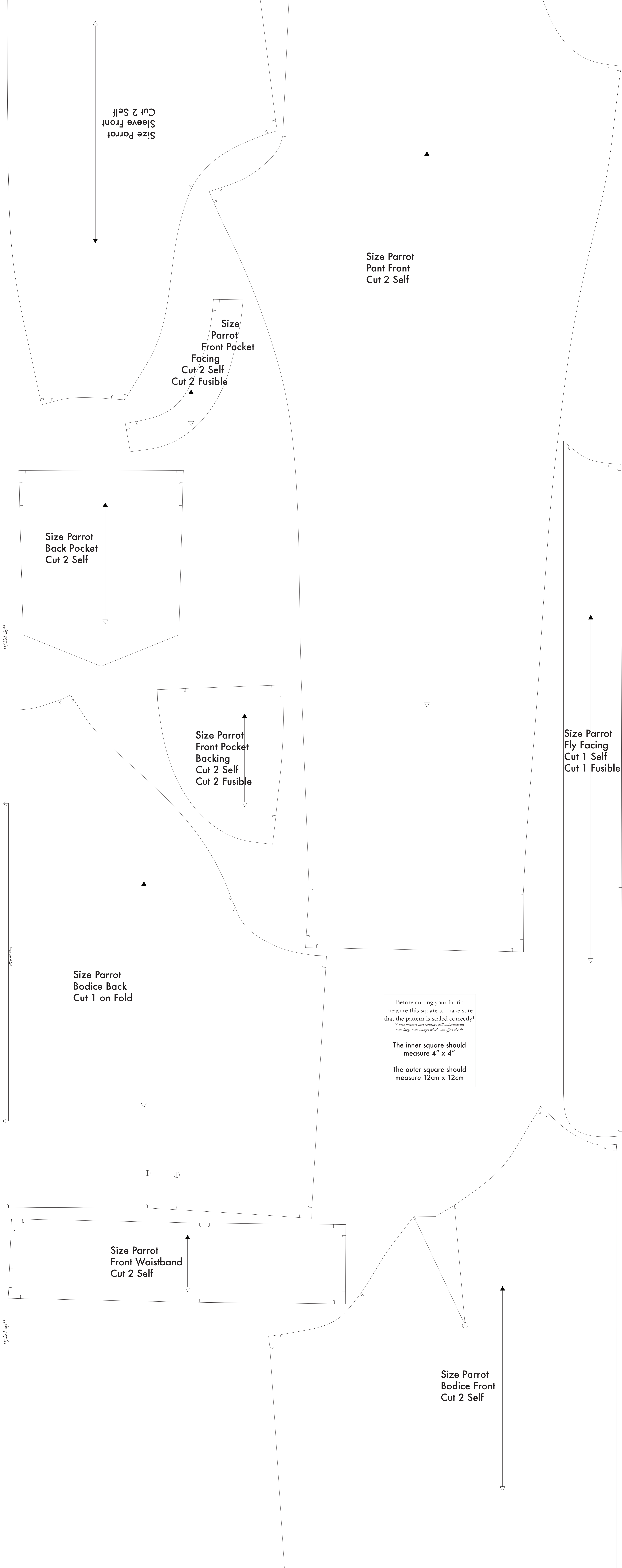
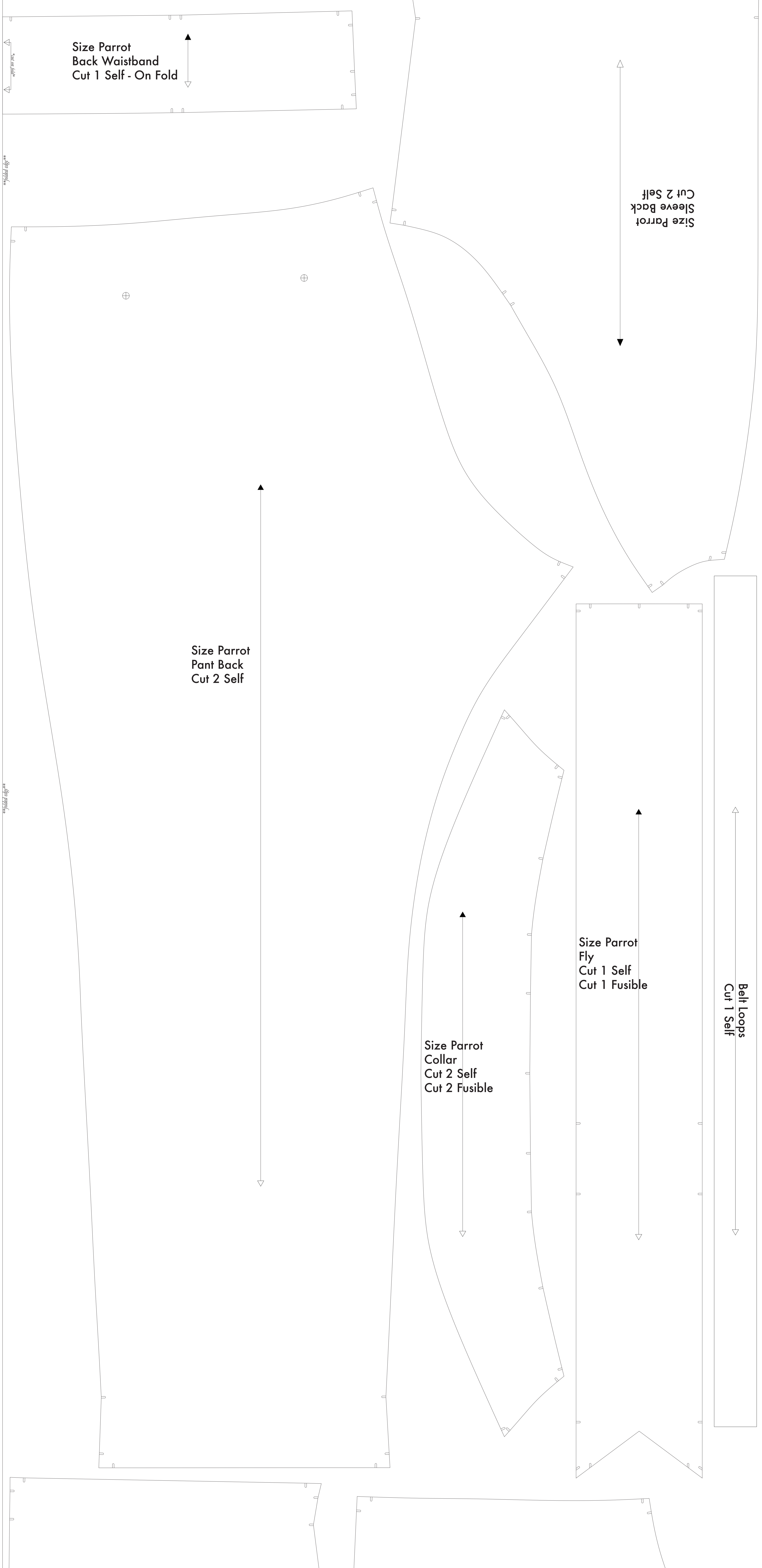
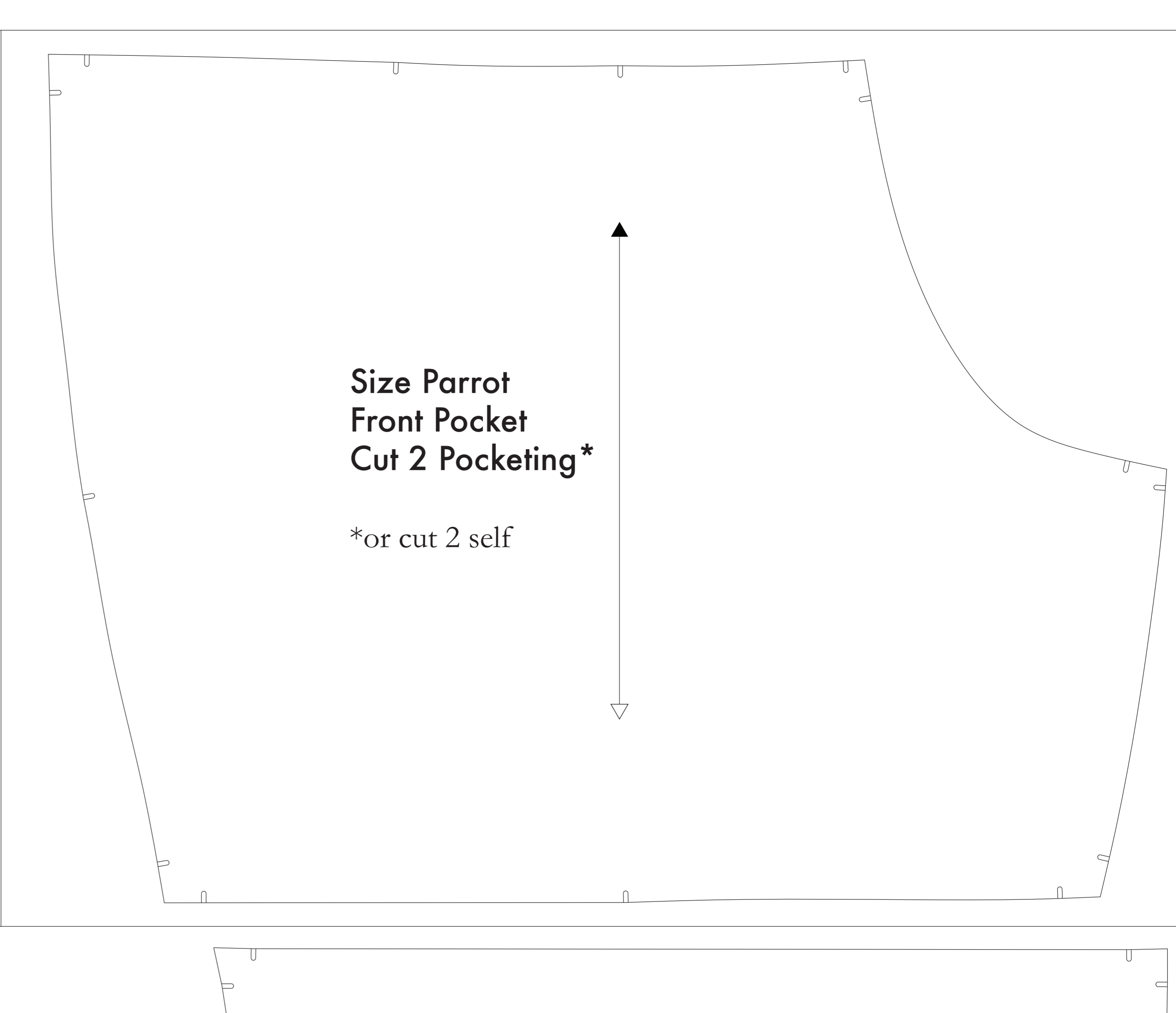
**CUTTING INSTRUCTIONS**

- Print pattern. You can print this document blind on sheets of standard size paper and tape the pieces together, or print on a single format paper (90" or wider). Their shape after this service for approximately 82% fit. If unable to use, the 82% recommended wide format printing.
- Check your pattern's perimeter cut along the perimeter rectangle to remove any excess paper. This template should fit together in a 54" wide or larger piece of fabric that has been folded in half. If your fabric is less than 54" wide, you will need to cut the pattern into two pieces. **NOTE:** If the pattern is cut into two pieces, the pieces should be cut out in the same direction. For fabric with a nap, such as velvet or corduroy or fabric with a clear directional print, see **NOTE 4**.
- Fold your fabric in half along the lengthwise grain marking with right side or wrong side. Schedule in the self-finished edge of fabric. This narrow border keeps the fabric from stretching or fraying. Often it has an edge that resembles one edge, though you may frequently, clearly finished line will be found. Avoid this edge in your cut pieces as the texture frequently differs from the main body of the fabric.
- Place the paper template over your fabric, matching the folded edge of the fabric with the side of the paper marked "finished edge".
- Place pins throughout the template pinning together both layers of fabric as well as the paper.
- Cut around the perimeter of each piece.
- Leaving the pins in place, you will next need to strip each of the corners, taking care to not strip beyond the end of the shape. **Note on the 1/2" Applique markings that are found throughout the pattern.** Some markings indicate where to make a notch, such as where you will dig out for any pattern piece that is not a simple shape.
- Mark all corners and fold lines. Using a pin, bring together both layers of fabric and the pattern, mark the center of each fold with chalk, wax or other removable, non-permanent tool. A tailor's tack may also be used. These marks will help you mark and cut the fabric correctly. They are to be used on the Front Back, Back Back, and Fly pattern pieces.
- (OPTIONAL)** Use fusible interfacing pieces (see **NOTE 6** for more info). Pattern pieces that use fusible will be marked with the dimension "Cut 2 Fusible" or "Cut 1 Fusible". These pieces are the Collar, Fly, Fly Facing, Front Pocket Facing, and Front Pocket Backing. For the fusible, lay the material down with the glue side facing up. Then place your pattern down and cut around the perimeter of each piece and notch.
- Cut the Front Bodice Back and Fly cut 2 of lighter pecking material. If you are using a pecking material, then the Front Pocket Fly may be cut alongside your other pattern pieces. **Pecking is not to make both in case of older material.** You will find an example of pecking on any pattern piece.

**NOTE 4: FABRIC LESS THAN 54" WIDE**  
 If your fabric is less than 54" wide, you will need to cut the pattern into two pieces. The pieces should be cut out in the same direction. For fabric with a nap, such as velvet or corduroy or fabric with a clear directional print, see **NOTE 4**. If the pattern is cut into two pieces, the pieces should be cut out in the same direction. For fabric with a nap, such as velvet or corduroy or fabric with a clear directional print, see **NOTE 4**. If the pattern is cut into two pieces, the pieces should be cut out in the same direction. For fabric with a nap, such as velvet or corduroy or fabric with a clear directional print, see **NOTE 4**.

**NOTE 5: FABRIC WITH NAP OR DIRECTIONAL PATTERN**  
 If the fabric has a nap or a directional pattern, take care to cut the pattern pieces in the correct direction. The pieces should be cut out in the same direction. For fabric with a nap, such as velvet or corduroy or fabric with a clear directional print, see **NOTE 4**.

**NOTE 6: USING FUSIBLE INTERFACING**  
 Fusible interfacing is a material that is used to stiffen fabric. It is used to stiffen fabric in areas where you want the fabric to hold its shape. It is used to stiffen fabric in areas where you want the fabric to hold its shape. It is used to stiffen fabric in areas where you want the fabric to hold its shape.



Before cutting your fabric measure this square to make sure that the pattern is scaled correctly\*  
\*Have printer and software set automatically with large scale images which will affect the fit.

The inner square should measure 4" x 4"

The outer square should measure 12cm x 12cm