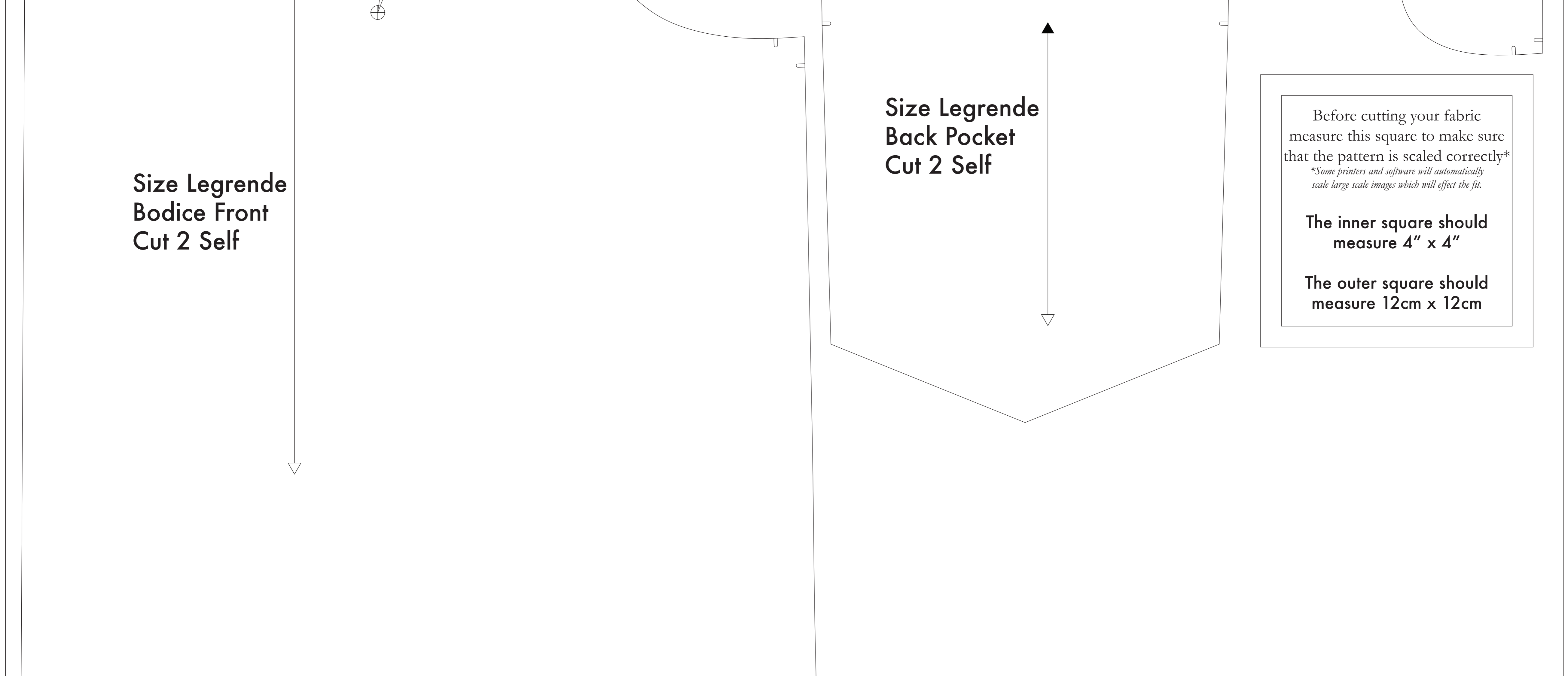
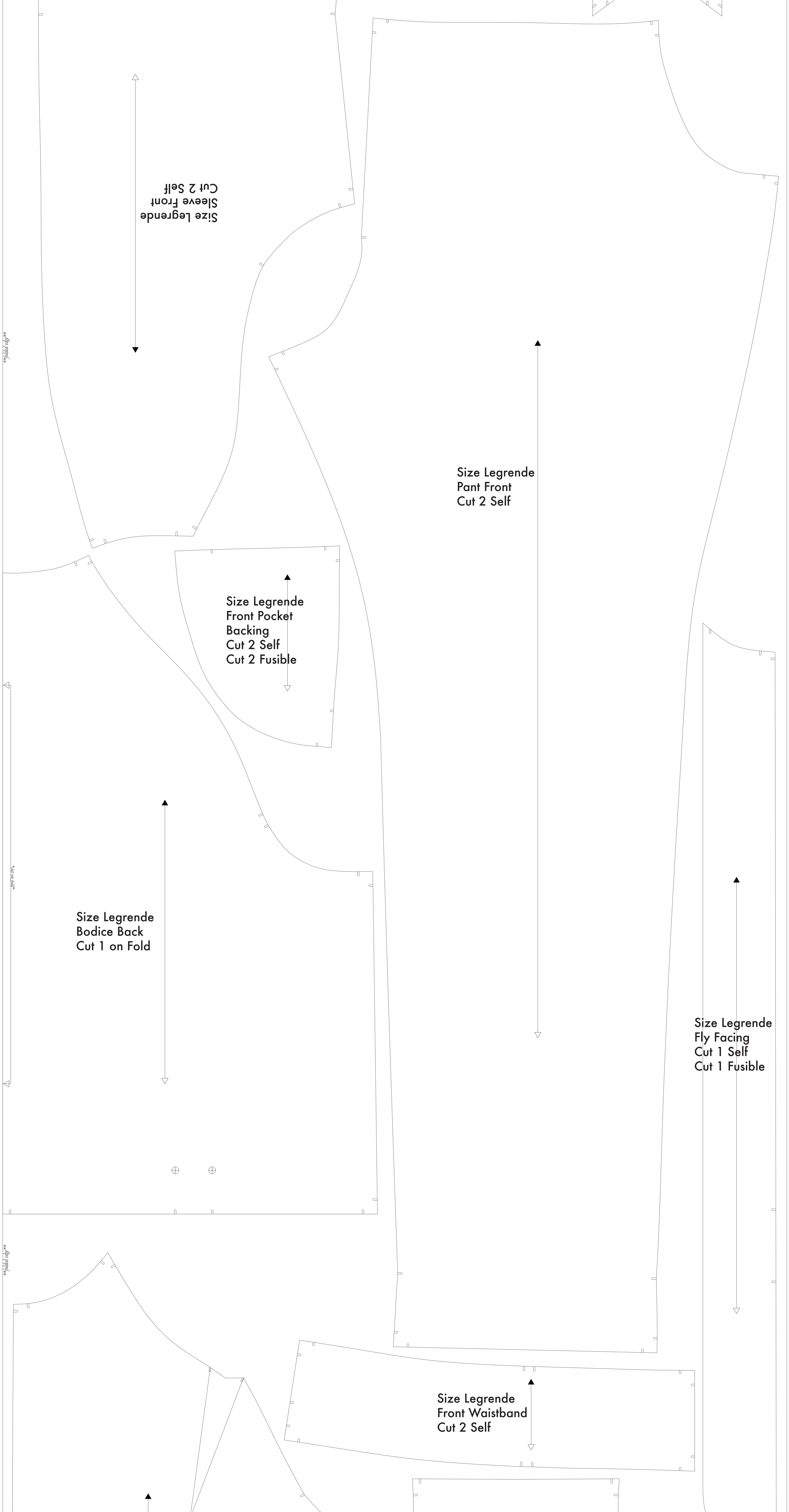
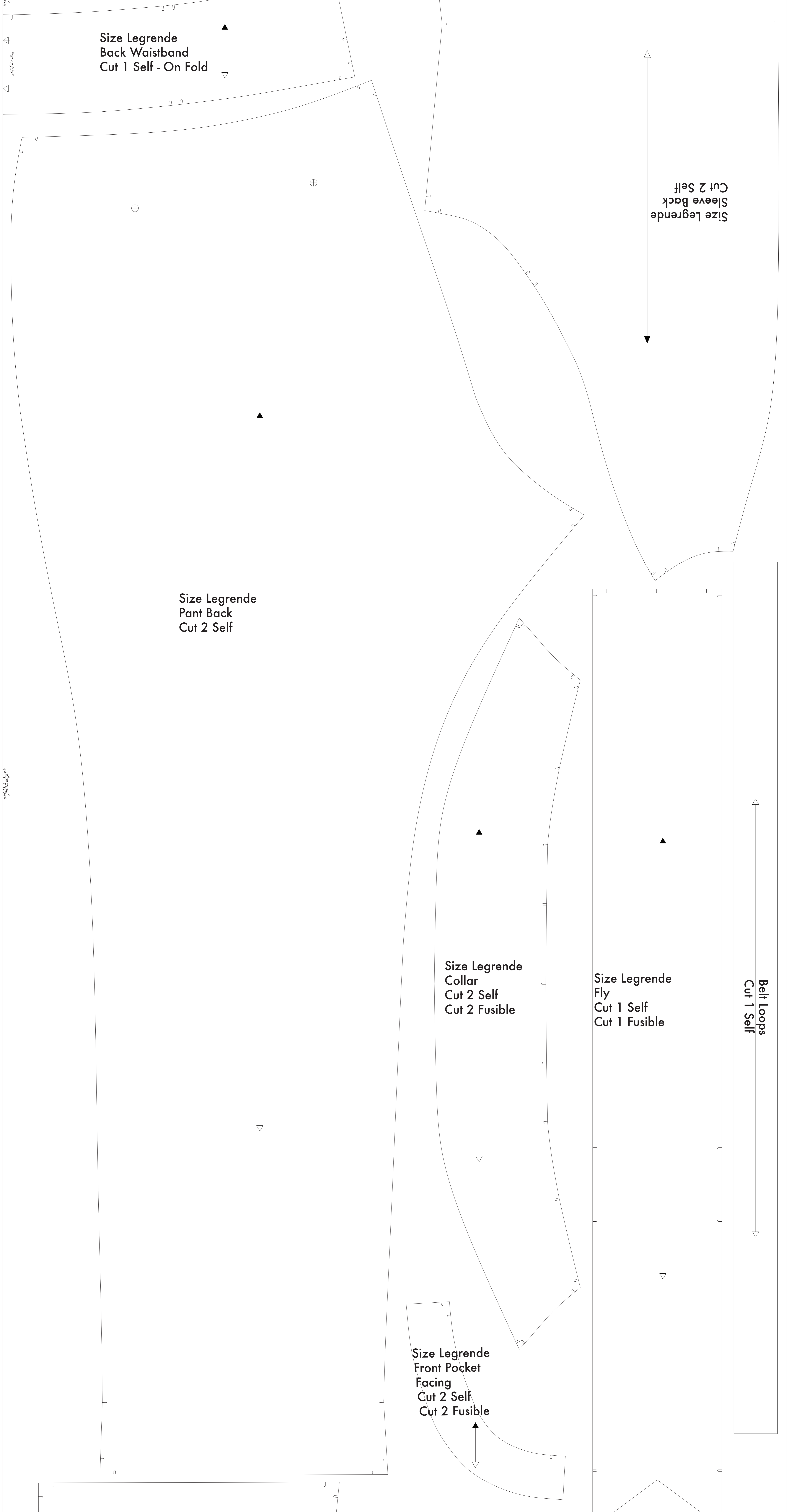
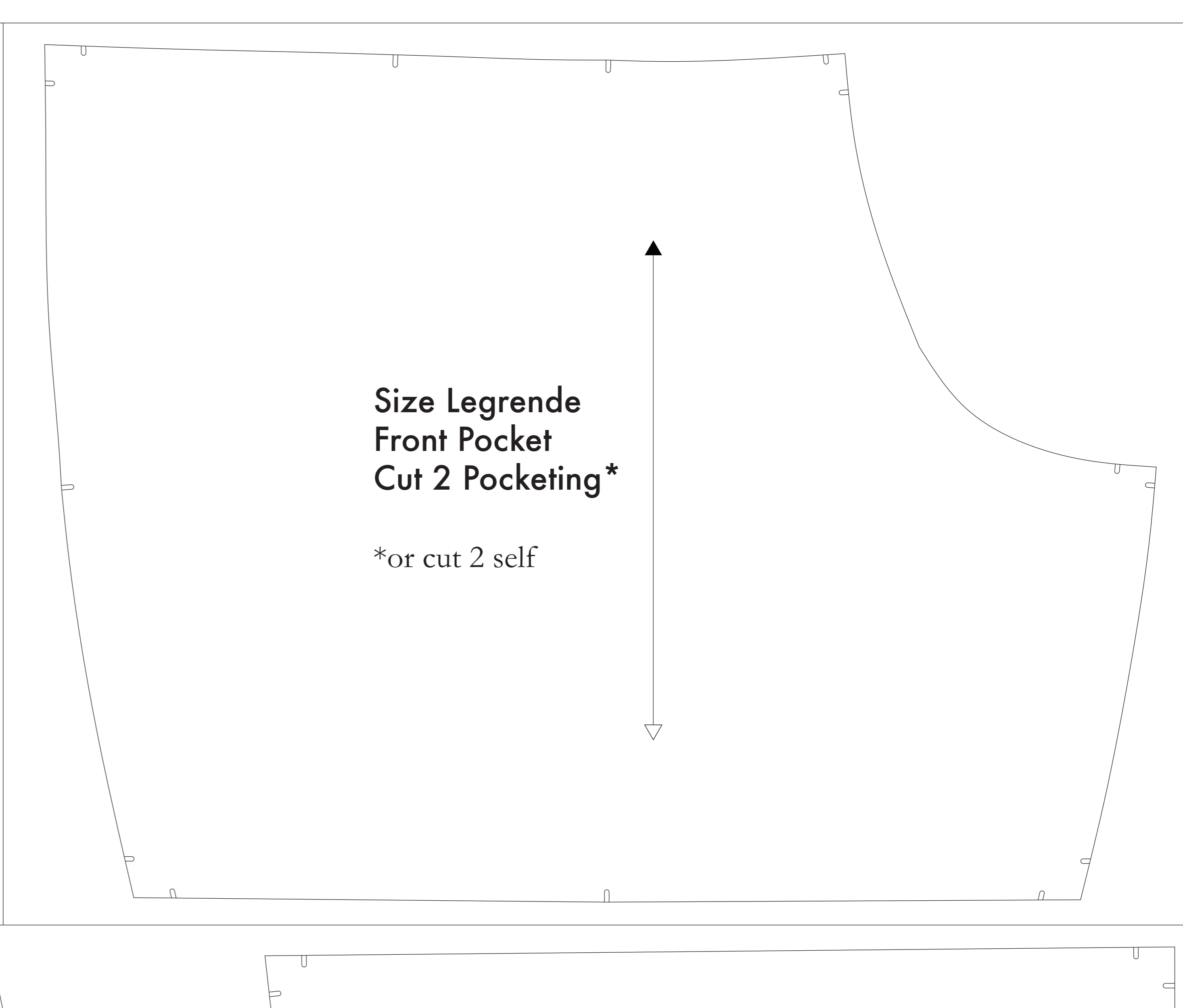


- SUPPLIES NEEDED**
- 3 1/2 YARDS OF 54" WIDE FABRIC
 - SHARP SCISSORS
 - REMOVABLE MARKING MEDIUM (chalk, wax, tailor's tuck, etc.)
 - 1/2" NON-SEPARATING ZIPPER
 - IRON
 - SEWING MACHINE
- optional:
- 1/2 YARD OF THINNER FUSIBLE FABRIC
 - FUSIBLE INTERFACING

- CUTTING INSTRUCTIONS**
1. Print pattern: You can print this document flat on sheets of standard size paper and tape the pieces together, or print on a wide format printer (36" or wider). Please check with your printer for approximately \$12. If available in your area, the B&W conversion will format printing.
 2. Once your pattern is printed, cut along the outermost rectangle to remove any excess paper. This template should fit exactly on a 36" wide or larger printer of fabric that has been folded in half. If your fabric is less than 36" wide, use **NOTE A** for maximum width this pattern is laid out for fabric that does not fold in a direction. For fabric with a different grain, use either the outside or fabric with a clear directional print. **NOTE B**
 3. Fold your fabric in half along the lengthwise grain matching selvage edge to selvage edge. Allow a 1/2" margin on the self-finished edge of fabric. This extra 1/2" keeps the fabric from stretching or fraying. Allow for an edge that resembles two rings, though just as frequently, a clearly finished line will be found. Avoid this edge in your cut pieces as the excess frequently differs from the main body of the fabric.
 4. Place the paper template on top your fabric, matching the folded edge of the fabric with the side of the paper marked "folded edge".
 5. Place pins throughout the template pinning together both layers of fabric as well as the paper.
 6. Leaving the pins in place, you will need to cut each of the numbers, taking care to not stop beyond the end of the 1/2" margin.
- Notes on the 1/2" margin: **1)** If you are using a wide format printer, the margin is not needed. **2)** If you are using a standard printer, the margin is needed to allow for the paper to be folded in half. **3)** If you are using a standard printer, the margin is needed to allow for the paper to be folded in half. **4)** If you are using a standard printer, the margin is needed to allow for the paper to be folded in half.
- NOTE A: FABRIC USES WANS 54" WIDE**
 If your fabric is less than 54" wide, you will need to cut and piece your fabric. Lay out the paper template on a flat surface and fold the paper template in half. The paper template is laid out for fabric that is 54" wide. The paper template is laid out for fabric that is 54" wide. The paper template is laid out for fabric that is 54" wide.
- NOTE B: FABRIC WITH A CLEAR DIRECTIONAL PATTERN**
 If your fabric has a clear directional pattern, you will need to cut and piece your fabric. Lay out the paper template on a flat surface and fold the paper template in half. The paper template is laid out for fabric that is 54" wide. The paper template is laid out for fabric that is 54" wide. The paper template is laid out for fabric that is 54" wide.
- NOTE C: USING FUSIBLE INTERFACING**
 If you are using fusible interfacing, you will need to cut and piece your fabric. Lay out the paper template on a flat surface and fold the paper template in half. The paper template is laid out for fabric that is 54" wide. The paper template is laid out for fabric that is 54" wide. The paper template is laid out for fabric that is 54" wide.



Before cutting your fabric measure this square to make sure that the pattern is scaled correctly*
 *Some printers and software will automatically scale large scale images which will affect the fit.

The inner square should measure 4" x 4"

The outer square should measure 12cm x 12cm