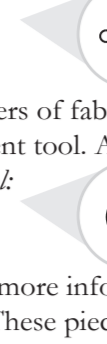


- SUPPLIES NEEDED**
- 3" YARDS OF 54" WIDE FABRIC
  - SHARP SCISSORS
  - REMOVABLE MARKING MEDIUM (chalk, wax, tailor's tuck, etc.)
  - 1 - 25" NON-SEPARATING ZIPPER
  - THREAD
  - SEWING MACHINE
  - FUSIBLE INTERFACING
  - 1/2 YARD OF THINNER POCKET FABRIC

- CUTTING INSTRUCTIONS**
1. Print pattern. You may print this document (and on sheets of standard size paper and tape the pieces together, or print on a wide-format printer (36" or wider). Print shops offer this service for approximately \$12. If available to you, the REDX recommends wide-format printing.
  2. Once your pattern is printed, cut along the outermost rectangle to remove any excess paper. The template should fit exactly on a 48" wide or larger piece of fabric that has been folded in half. If your fabric is less than 48" wide use **NOTE A**. For maximum yield this pattern is laid out for fabric that does not have a direction. For fabric with self-finished edge or fusible interfacing use **NOTE B**.
  3. Fold your fabric in half along the lengthwise grain matching selvage edge to selvage edge. Sew along the self-finished edge of fabric. This is important to ensure the fabric from wrapping or fraying. Once the two ends of the fabric meet, press the seam flat. This is important to ensure the fabric from the rest of the fabric.
  4. Place the paper template on top your fabric, matching the folded edge of the fabric with the side of the paper marked "folded edge".
  5. Place pins throughout the template pinning together both layers of fabric as well as the paper.
  6. Cut around the perimeter of each piece.
  7. Leaving the pins in place, you will need to strip each of the pieces, taking care to not strip beyond the end of the fabric.
  8. Mark all **NOTES** and **NOTES** that are placed throughout the pattern.
  9. Some notes indicate seam allowances, while others will tell you to use a 1/2" seam allowance.
  10. Mark all **NOTES** and **NOTES**. Using a pin, bring together both layers of fabric and the pattern, mark the corner of each doll back with chalk, wax or other removable, non-permanent tool. A tailor's tuck may also be used.
  11. Your corner fold lines or markings are indicated by the following symbol: 
  12. They will be found on the Back Band, Back Band, and 1/2 pant pieces.
  13. **(OPTIONAL)** Cut fusible interfacing pieces for **NOTE C** for more info. Pattern pieces that use fusible will be marked with the direction "Cut 2 Fusible" or "Cut 1 Fusible". These pieces are the Collar Fly, Fly Facing, Front Pocket Facing, and Front Pocket Bagging. To cut the fusible, lay the material down with the glue side facing up, then place your pattern down and cut around the perimeter of each piece and/or notch.
  14. Cut the Front Pocket Bag out of a lighter pocketing material. If you are not using a pocketing material, then the Front Pocket Bag may be cut straight from your other pattern pieces. *Adding a waist to make each waist of fabric material... You will find an example of pocketing on any pair of the pants.*

**NOTE A: FABRIC LESS THAN 54" WIDE**

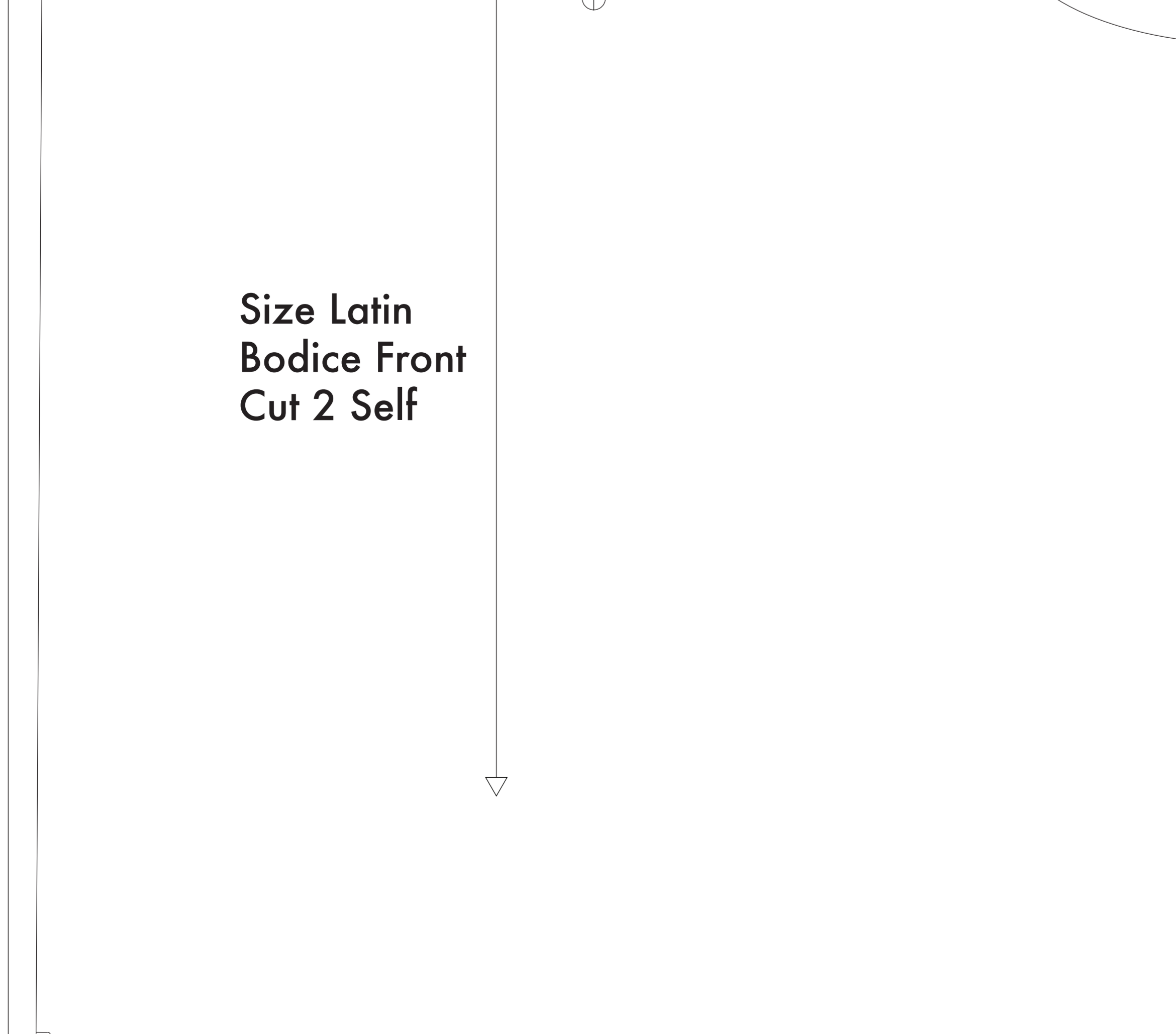
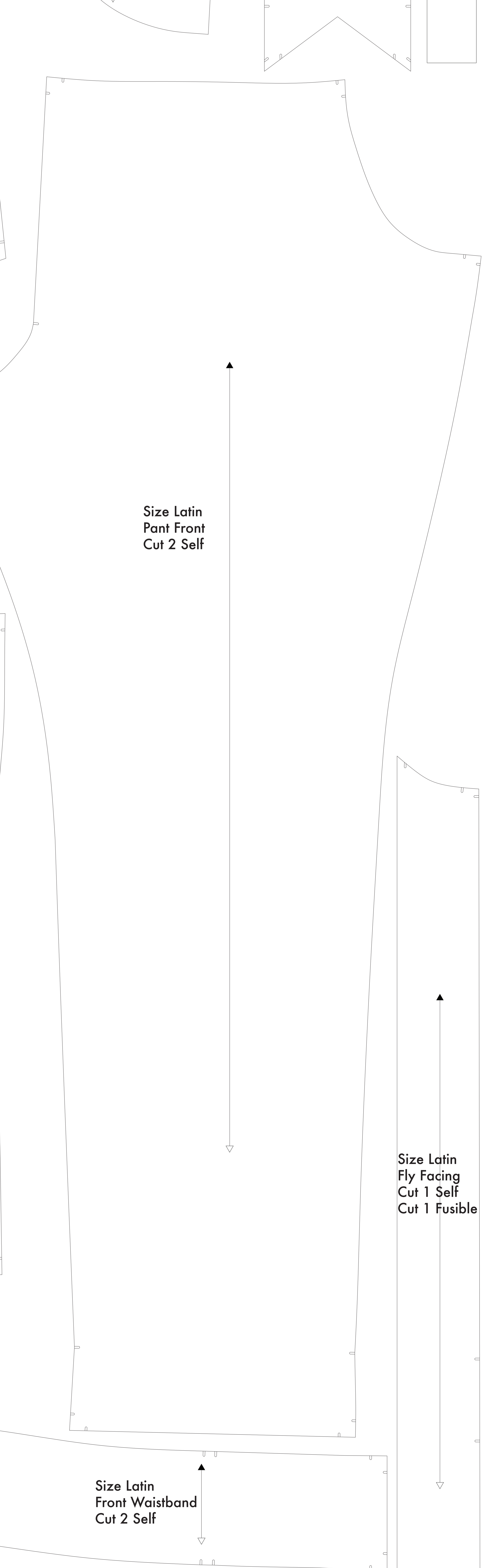
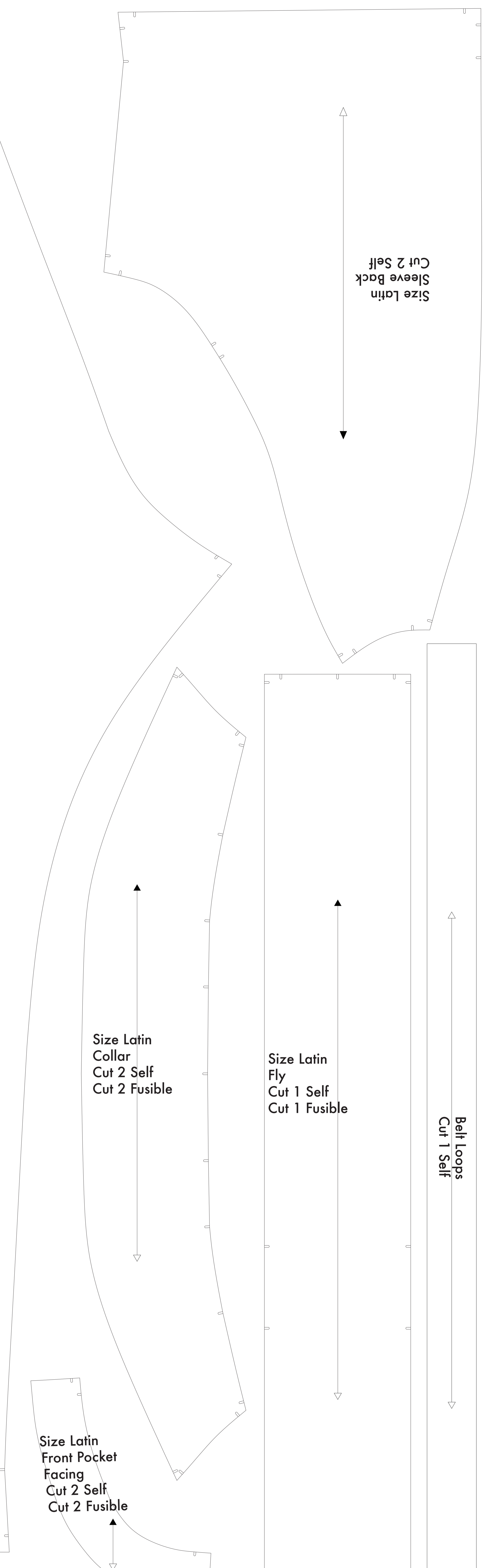
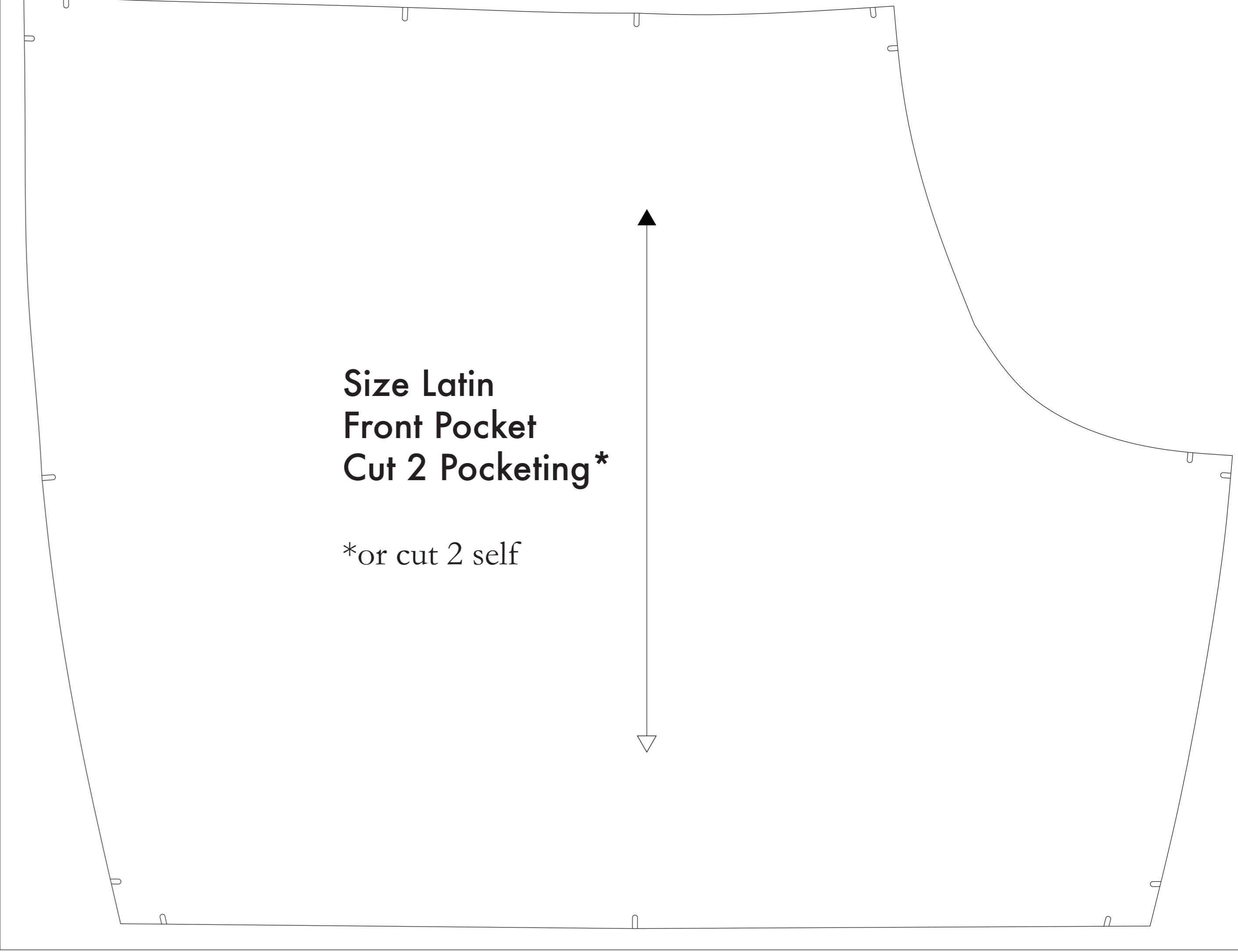
If your fabric is less than 54" wide, you will need to cut out pieces from a larger piece of fabric. To do this, you will need to cut out pieces from a larger piece of fabric. To do this, you will need to cut out pieces from a larger piece of fabric. To do this, you will need to cut out pieces from a larger piece of fabric.

**NOTE B: FABRIC WITH HEM OR DIRECTIONAL PATTERN**

If your fabric has a hem or a directional pattern, you will need to cut out pieces from a larger piece of fabric. To do this, you will need to cut out pieces from a larger piece of fabric. To do this, you will need to cut out pieces from a larger piece of fabric.

**NOTE C: USING FUSIBLE INTERFACING**

Fusible interfacing is a material that is used to stiffen and stabilize fabric. It is used to stiffen and stabilize fabric. It is used to stiffen and stabilize fabric.



Before cutting your fabric measure this square to make sure that the pattern is scaled correctly\*

\*Some printers and printers will offset the file.

The inner square should measure 4" x 4"

The outer square should measure 12cm x 12cm