

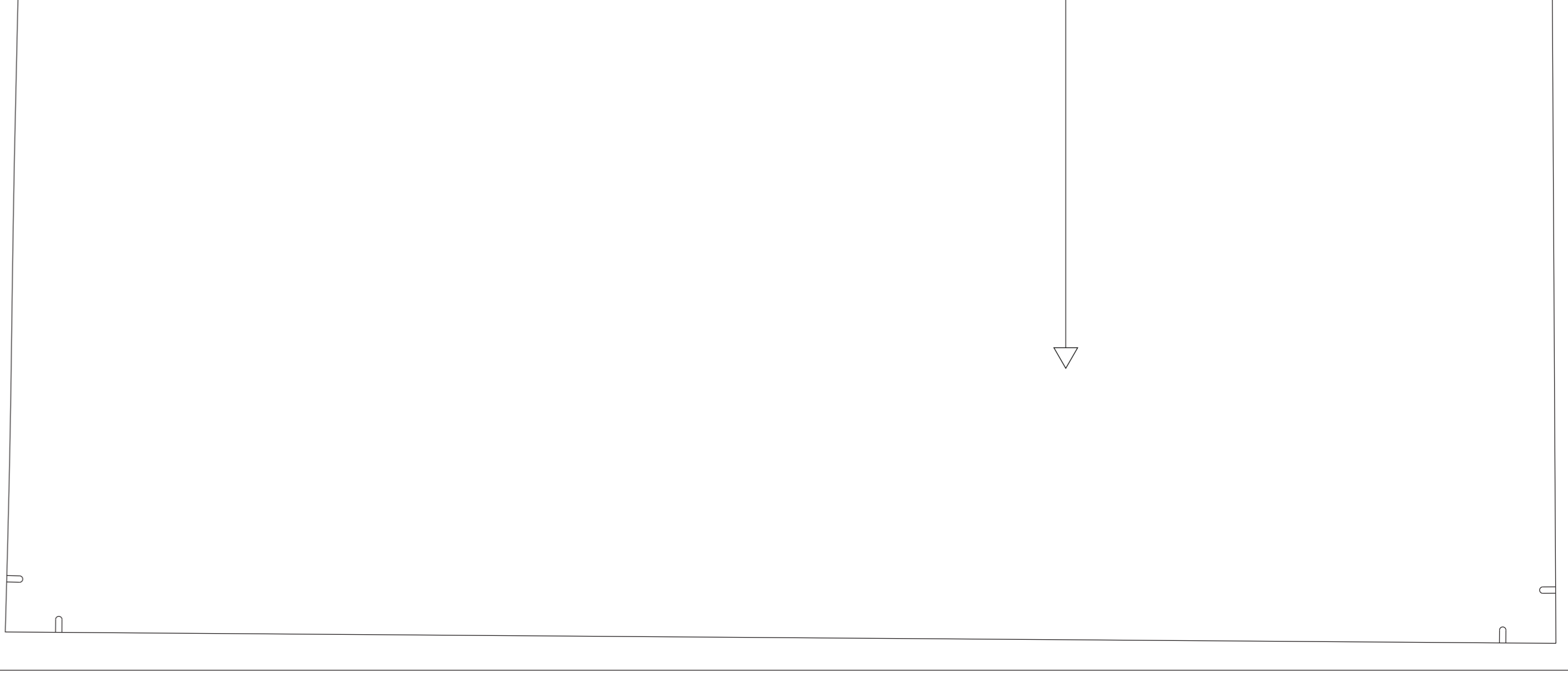
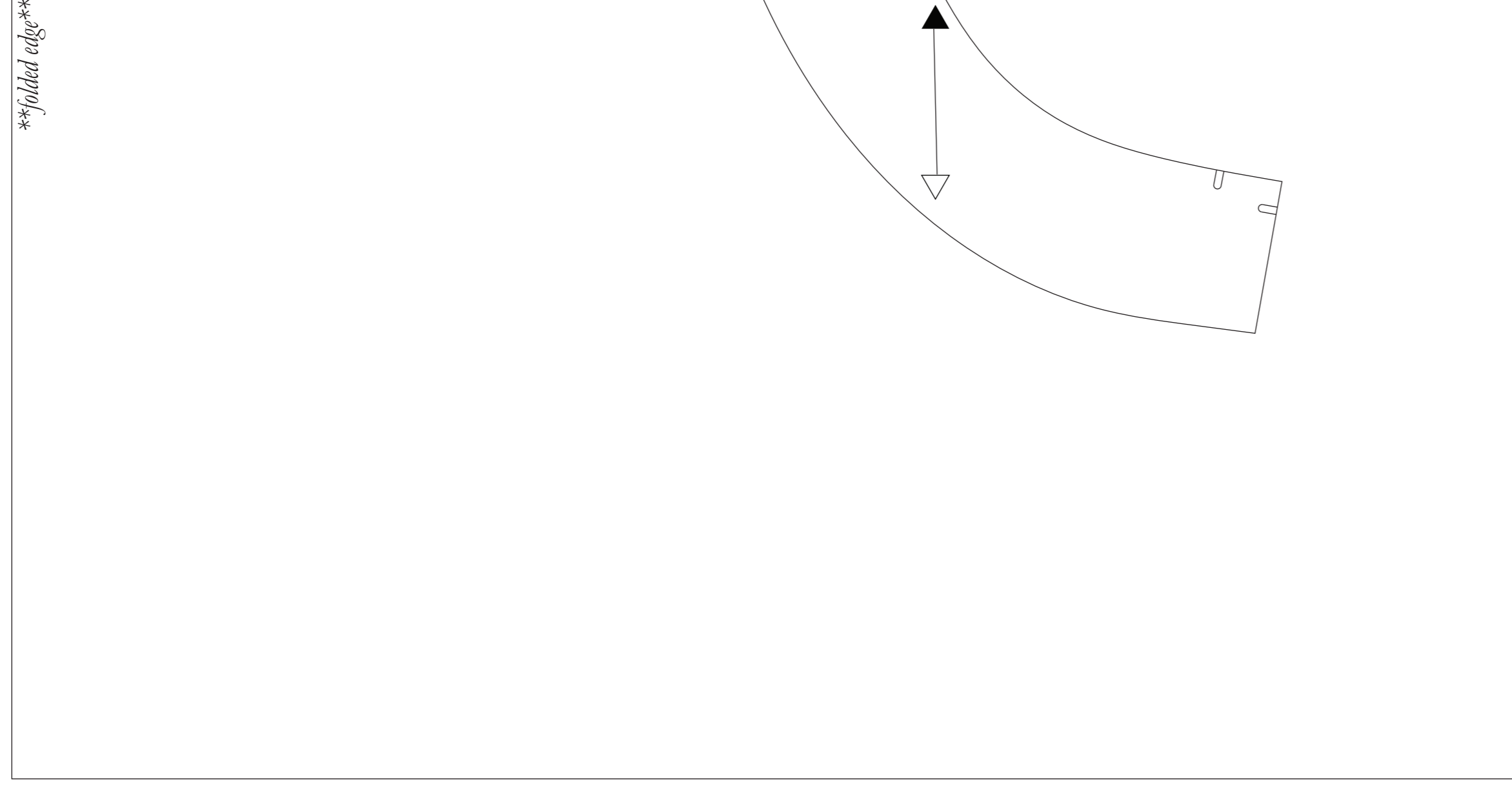
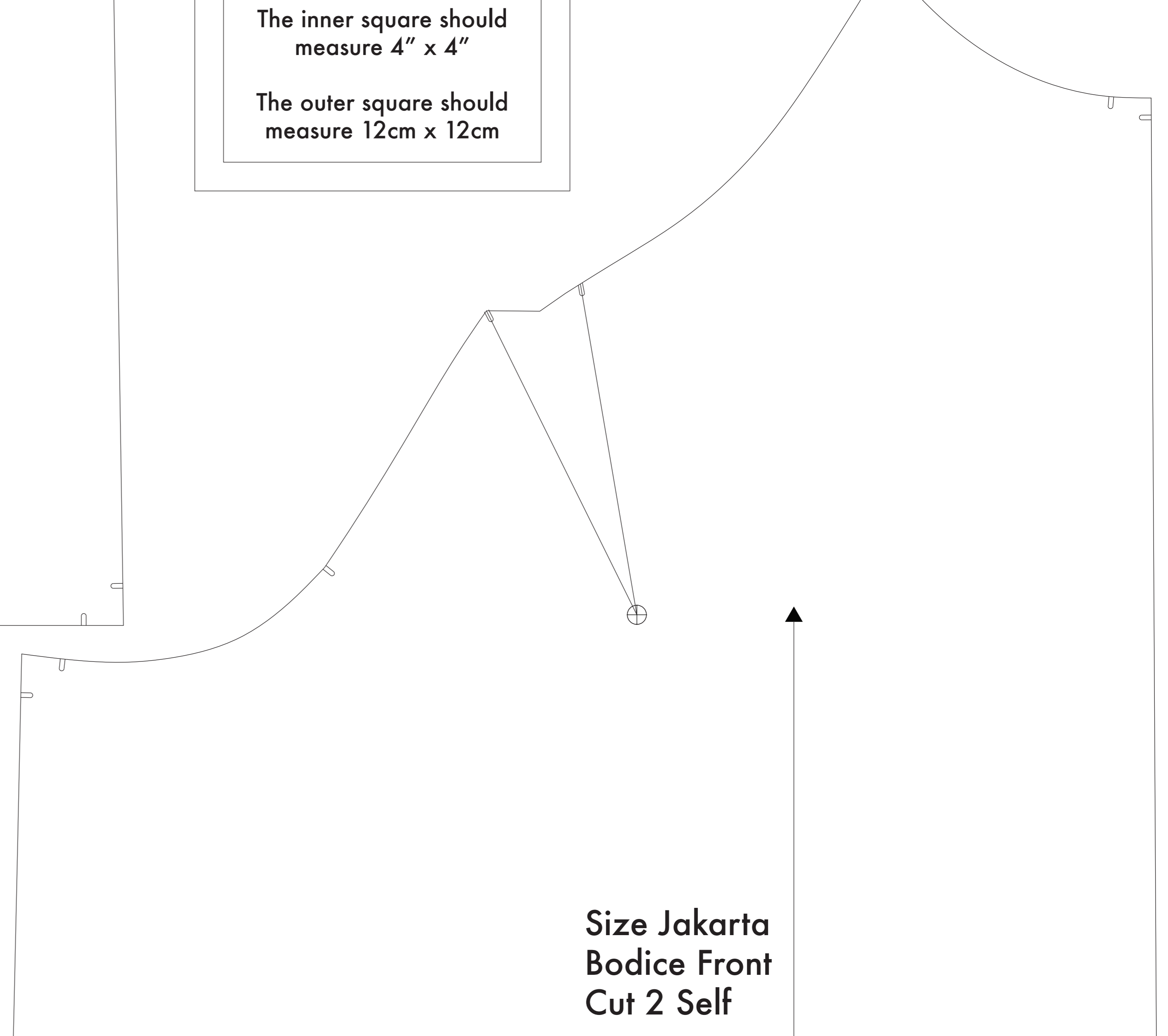
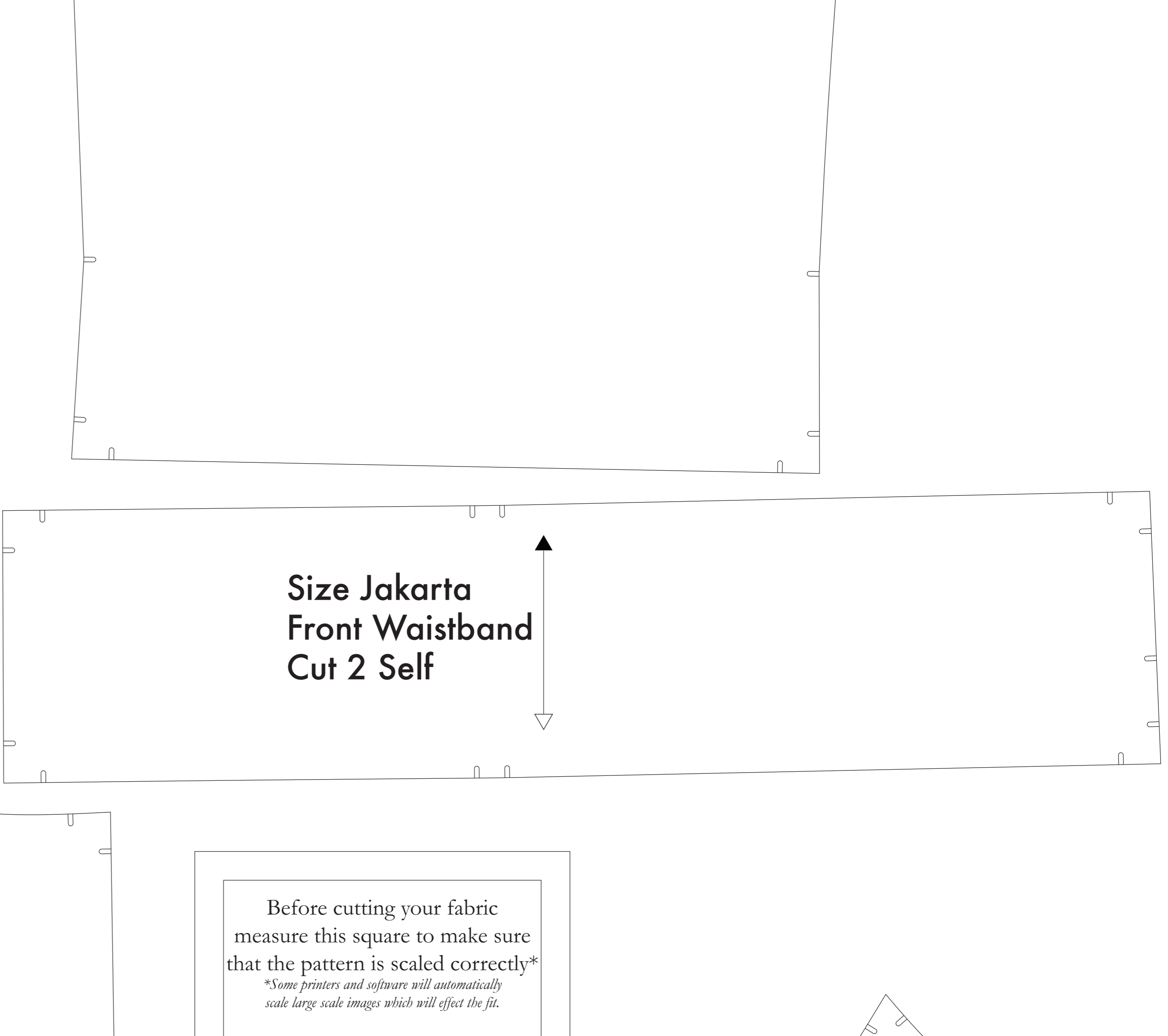
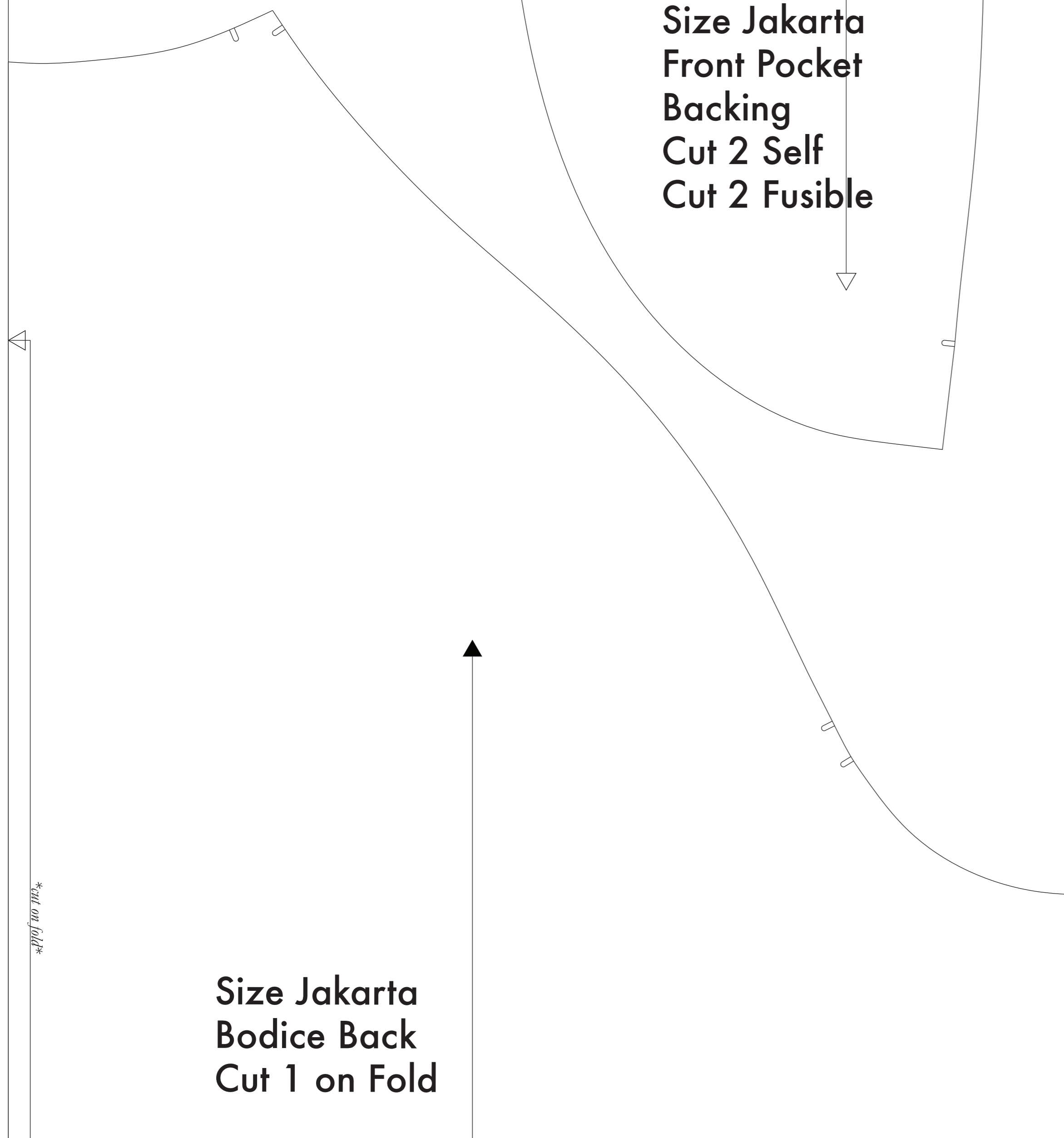
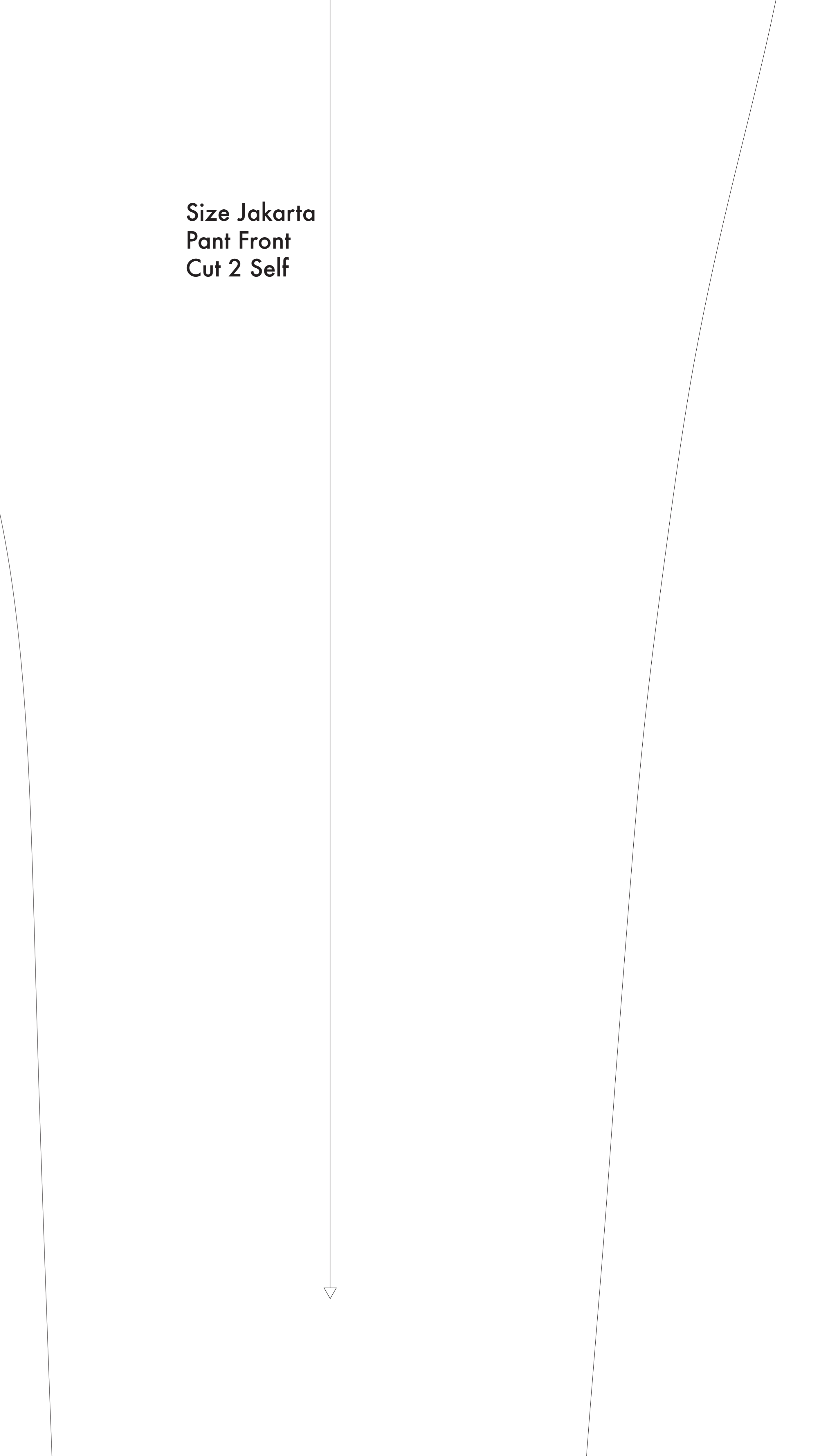
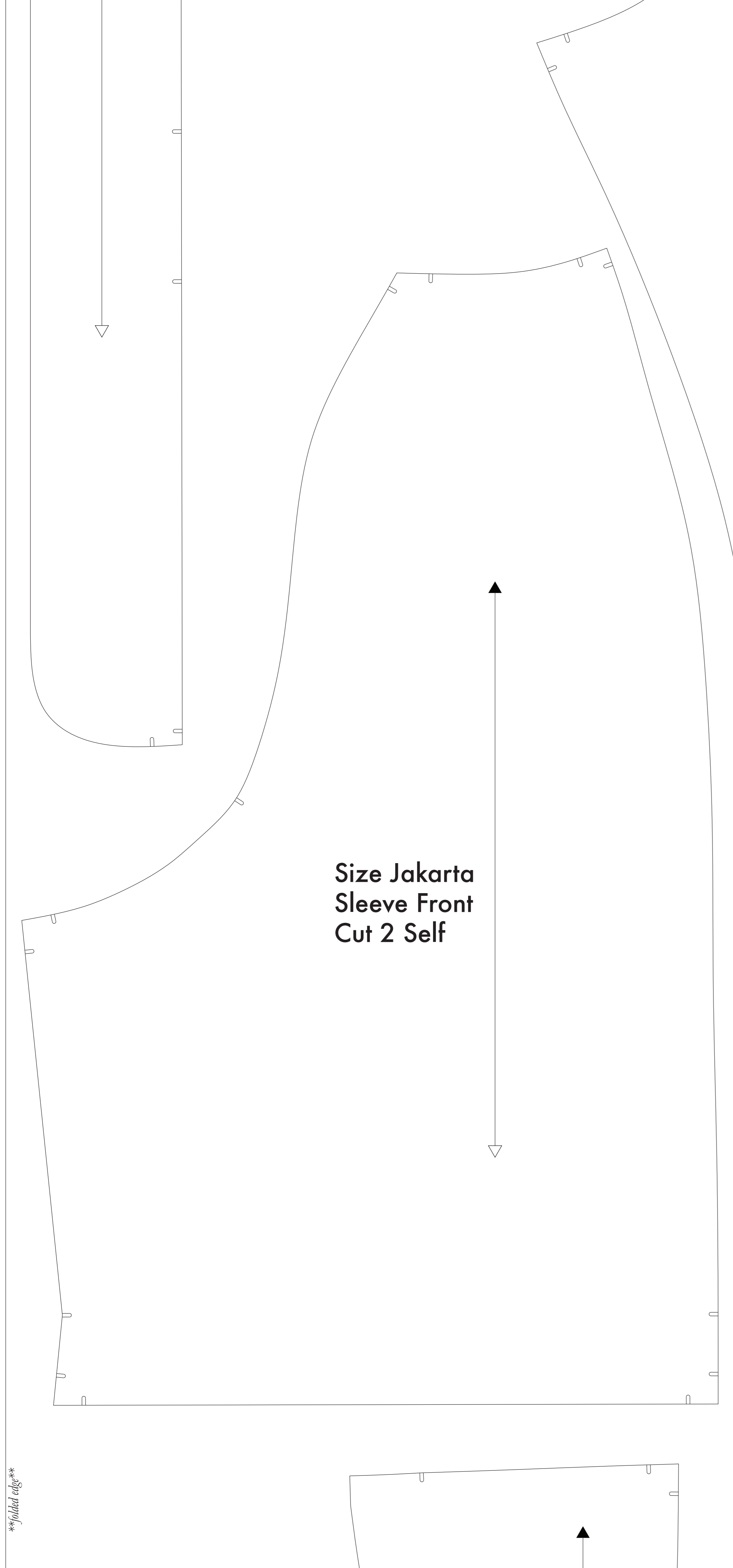
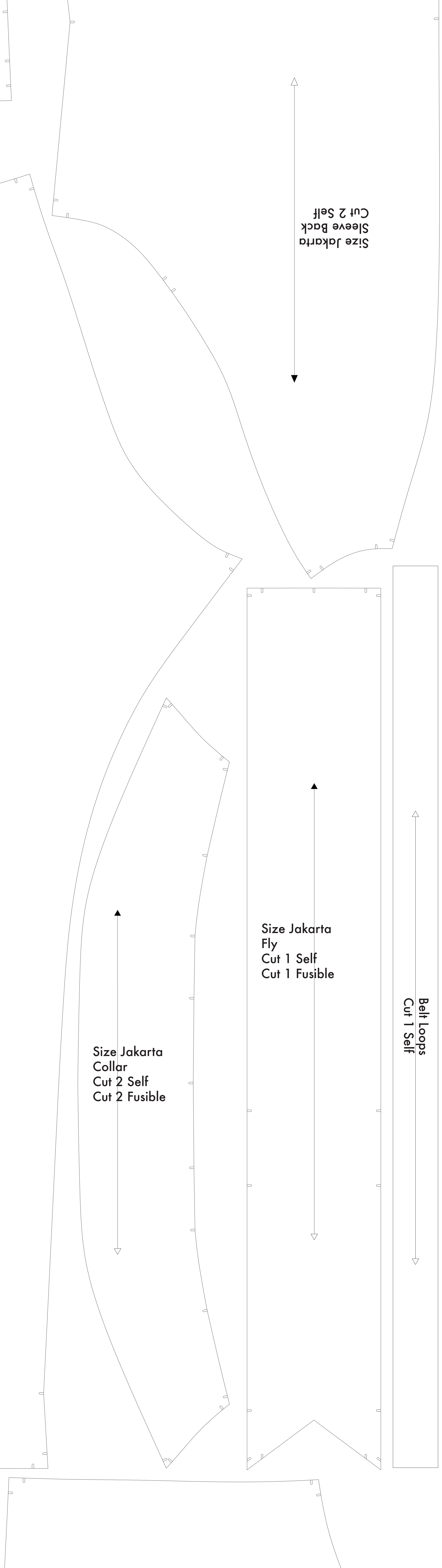
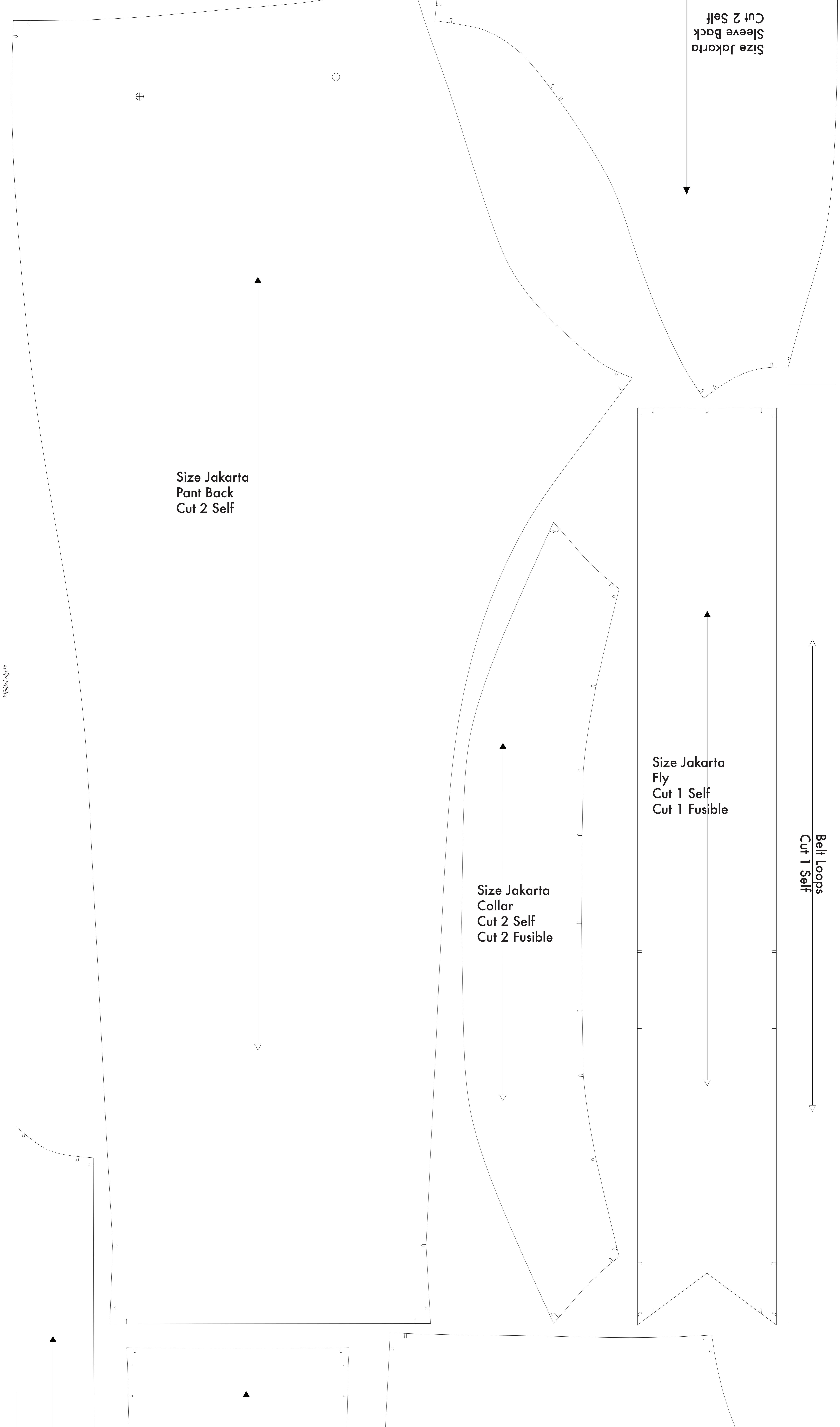
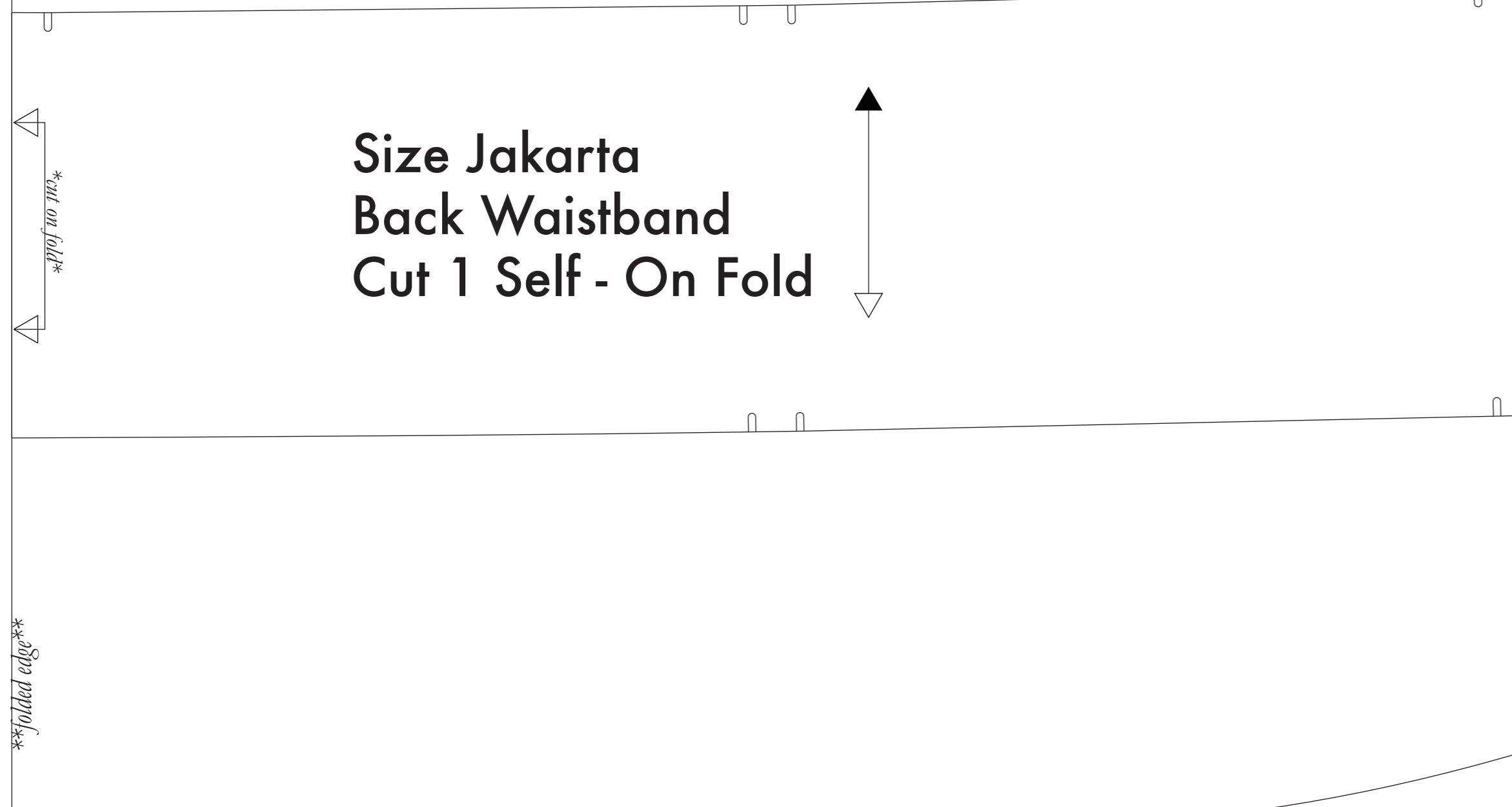
- SUPPLIES NEEDED**
- 3 1/2 YARDS OF 54" WIDE FABRIC
  - SHARP SCISSORS
  - REMOVABLE MARKING MEDIUM (chalk, wax, tailor's tack, etc.)
  - 1/2" NON-SEPARATING ZIPPER
  - THREAD
  - SEWING MACHINE
- optional:
- 1/2 YARD OF THINNER POCKET FABRIC
  - FUSIBLE INTERFACING

- CUTTING INSTRUCTIONS**
1. These patterns have cut pieces that are intended to be cut on sheets of standard size paper and tape the pieces together or print out on a wide format printer (36" or wider). Please check the size for approximately 812. If available to you, the 812 is recommended for better printing.
  2. Once your pattern is printed, cut along the minimum rectangle to remove any excess paper. The template should fit exactly on a 18" wide or larger piece of fabric that has been folded in half. If your fabric is less than 36" wide, use **NOTE A** for instructions and the pattern is laid out for fabric that does not have a direction. For fabric with a direction, use fabric as either a waistband or fabric with a half directional piece as **NOTE B**.
  3. Fold your fabric in half along the lengthwise grain matching selvage edge to selvage edge. Schedule in the self-finished edge of fabric. The center marker keeps the fabric from twisting or fraying. Once a line is on edge that resembles the fringe, though just as frequently, a clearly finished line will be found. Avoid this edge in your cut pieces as the seam frequently differs from the main body of the fabric.
  4. Place the paper template on top your fabric, matching the folded edge of the fabric with the side of the paper marked "folded edge".
  5. Place pins throughout the template pinning together both layers of fabric as well as the paper.
  6. Cut around the perimeter of each piece.
  7. Leaving the pins in place, you will need to mark each of the numbers, taking care to not slip beyond the end of the "shape".
  8. Markers are all 1/4" diameter markings that are placed throughout the pieces. Use pins and other non-damaging markers such as chalk, wax, or tailor's tack, and use pins to hold the pieces in place. Mark all number and notch markers. Using a pin, bring together both layers of fabric and the pattern, mark the corner of each notch and fold, or marking, as indicated in the following panel.
  9. **NOTES:** All pieces are cut on the "fold" side of the fabric. **NOTE C:** For pieces with a waistband, pieces that are not self-finished, or "cut 2 fusible" or "cut 1 fusible". These pieces are the Collar, Fly, Fly Facing, Front Pocket Facing, and Front Pocket Backing. For the fusible, for the material shown with the flat side facing up, then place your pattern down and cut around the perimeter of each piece and notch.
  10. Cut the three Pocket Bag out of a higher-packing material. If you are not using a backing material, then the Front Pocket Bag may be cut alongside your other pattern pieces. Furling it and a notch hole in case of fabric waistband. The fabric for the pocket bagging is not part of the main.

**NOTE A: FABRIC LESS THAN 36" WIDE**  
 If your fabric is less than 36" wide, you will need to cut with the grain as indicated. The pattern is laid out for fabric that does not have a direction. For fabric with a direction, use fabric as either a waistband or fabric with a half directional piece as **NOTE B**.

**NOTE B: FABRIC WITH HALF OR DIRECTIONAL PATTERN**  
 This pattern is laid out for fabric that has a direction. Use the pattern as shown or as indicated in the following panel. The pattern is laid out for fabric that has a direction. Use the pattern as shown or as indicated in the following panel.

**NOTE C: USING FUSIBLE INTERFACING**  
 This pattern is laid out for fabric that has a direction. Use the pattern as shown or as indicated in the following panel. The pattern is laid out for fabric that has a direction. Use the pattern as shown or as indicated in the following panel.



Before cutting your fabric measure this square to make sure that the pattern is scaled correctly\*

\*Some printers and software will automatically scale your print image which will affect the fit.

The inner square should measure 4" x 4"

The outer square should measure 12cm x 12cm