

- SUPPLIES NEEDED**
- 2" FABRIC CUT WIDE FABRIC
  - SHARP SCISSORS
  - REMOVABLE MARKING MEDIUM (chalk, wax, tailor's tack, etc.)
  - 1/2" 26" NON SEPARATING ZIPPER
  - THREAD
  - SEWING MACHINE
  - FUSIBLE INTERFACING

**CUTTING INSTRUCTIONS**

1. Print pattern. You can print this document on sheets of standard size paper and tape the pieces together, or print on a wide format printer (11" or wider). Paper always offers the service for approximately 112. If available to you, the B2B recommends wide format printing.
2. Once your pattern is printed, cut along the outermost rectangle to remove any excess paper. This template should fit snugly on a 14" wide or larger piece of fabric that has been folded in half. If your fabric is less than 14" wide, see **NOTE A**. For maximum yield, this pattern is laid out for fabric that does not have a direction. For fabric with a grain, such as velvet or tulle, or fabric with a clear directional print see **NOTE B**.
3. Fold your fabric in half along the lengthwise grain matching either side edge edge. **NOTE B** is the self finished edge of fabric. This center line keeps the fabric from stretching or fraying. Often it has an edge that resembles any fringe, though you can frequently get a fully finished hem with the fabric. Avoid this edge in your cut pieces as the seams frequently differ from the main body of the fabric.
4. Place the paper template on top of your fabric, matching the folded edge of the fabric with the side of the paper marked "folded edge".
5. Place pins throughout the template pinning together both layers of fabric as well as the paper.
6. Cut around the perimeter of each piece.
7. Laying the paper on flat, you will need to step each of the notches, taking care to not step beyond the end of the U shaped notch.
8. Make sure to follow the notches that are labeled "notches" and the pattern, mark the center of each notch with a pin. Make sure to follow the notches that are labeled "notches" and the pattern, mark the center of each notch with a pin. Make sure to follow the notches that are labeled "notches" and the pattern, mark the center of each notch with a pin.
9. These notches are for the notches that are labeled "notches" and the pattern, mark the center of each notch with a pin. Make sure to follow the notches that are labeled "notches" and the pattern, mark the center of each notch with a pin.
10. (OPTIONAL) Cut fusible interfacing pieces (see **NOTE C** for more info). Pattern pieces that use fusible will be marked with the direction "Cut 2 Fusible" or "Cut 1 Fusible". These pieces are the Collar, Fly Facing, Front Pocket Facing, and Front Pocket Backing. To cut the fusible, lay the material down with the glue side facing up, then place your pattern piece down and cut around the perimeter of each piece and notch.
11. Cut the Front Pocket Bag out of a lighter weight material. If you are not using a pocketing material, then the Front Pocket Bag may be cut straight out of your pattern piece. Pocketing is used to make bags to wear as a holder around - You will find an example of pocketing on any pair of blue jeans.

**NOTE A: FABRIC LESS THAN 14" WIDE**

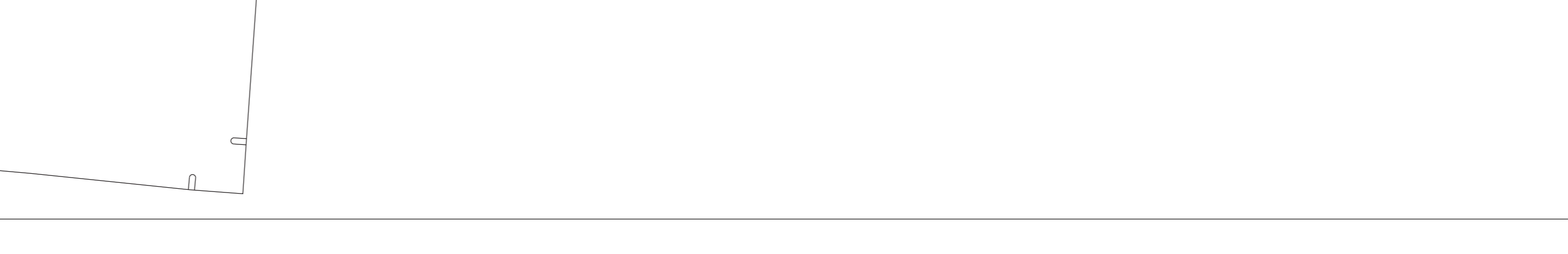
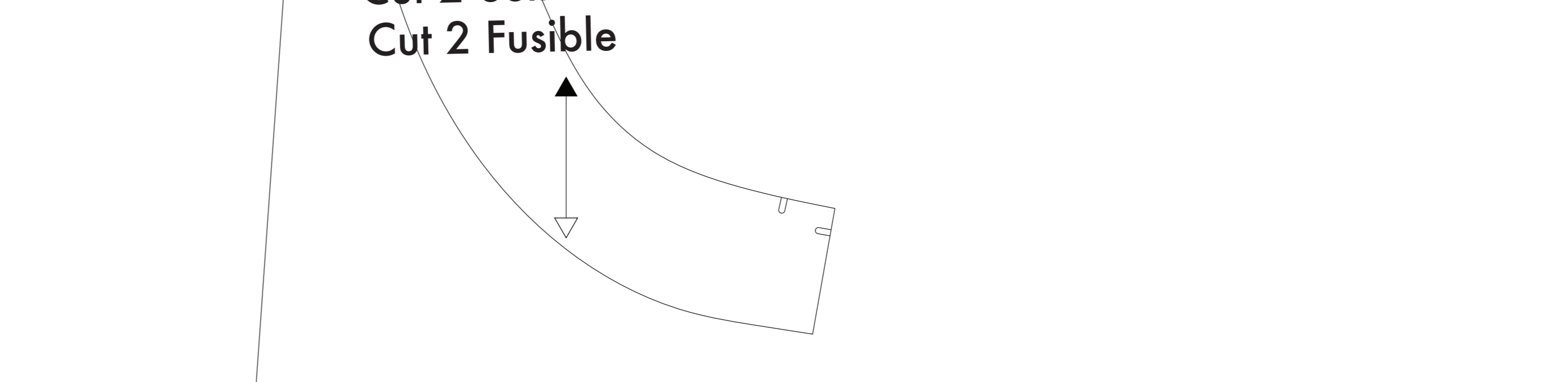
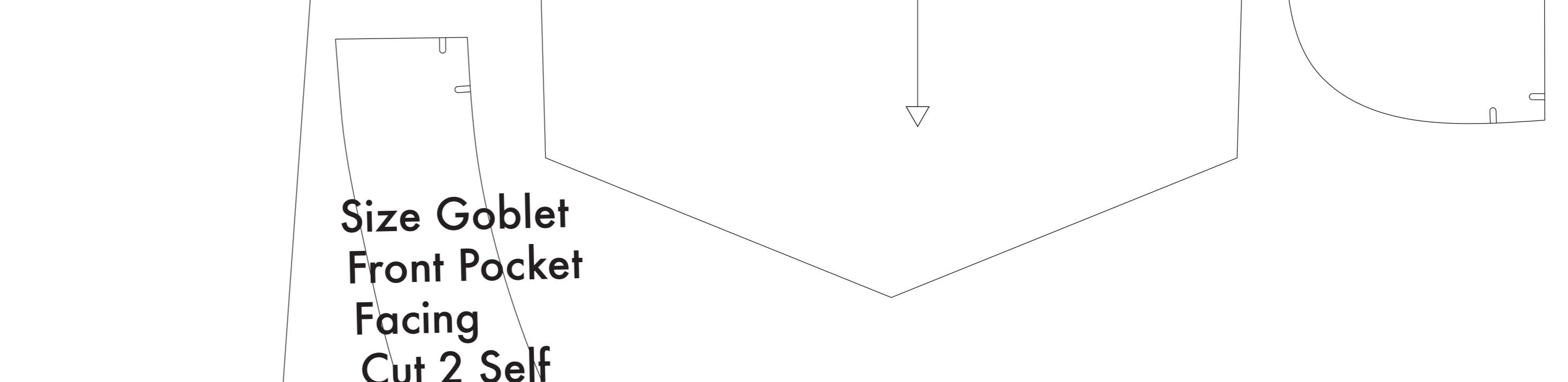
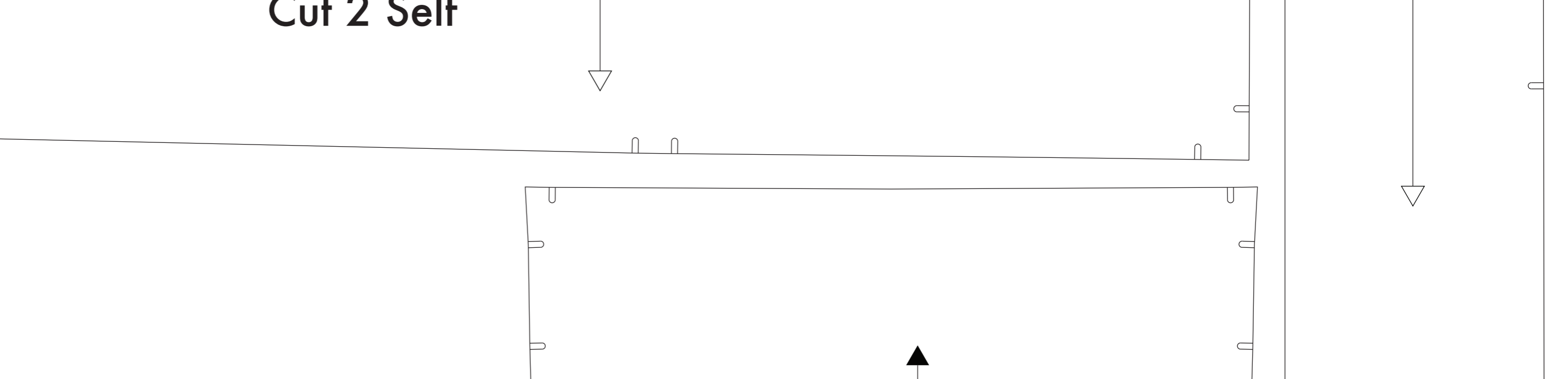
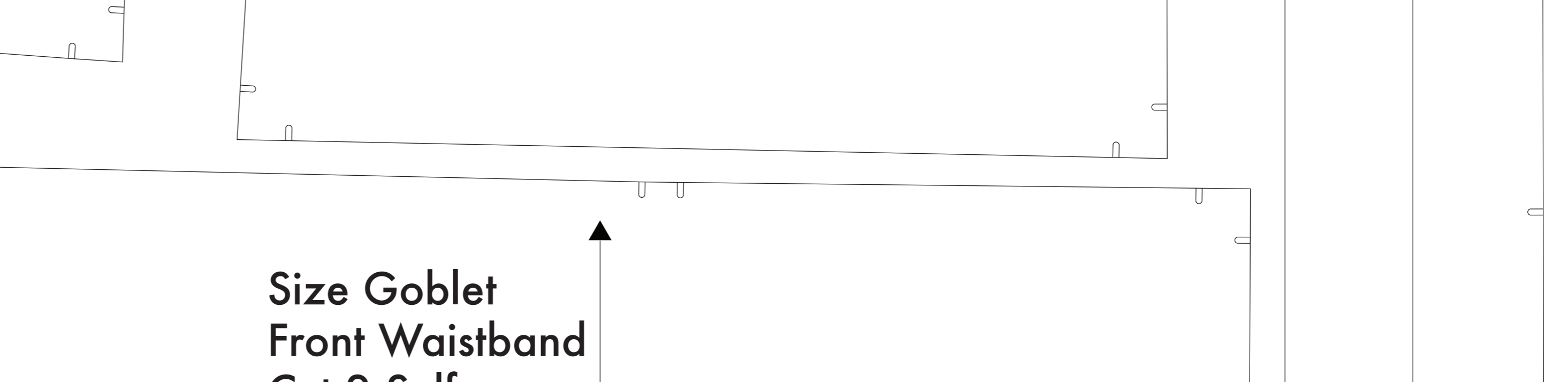
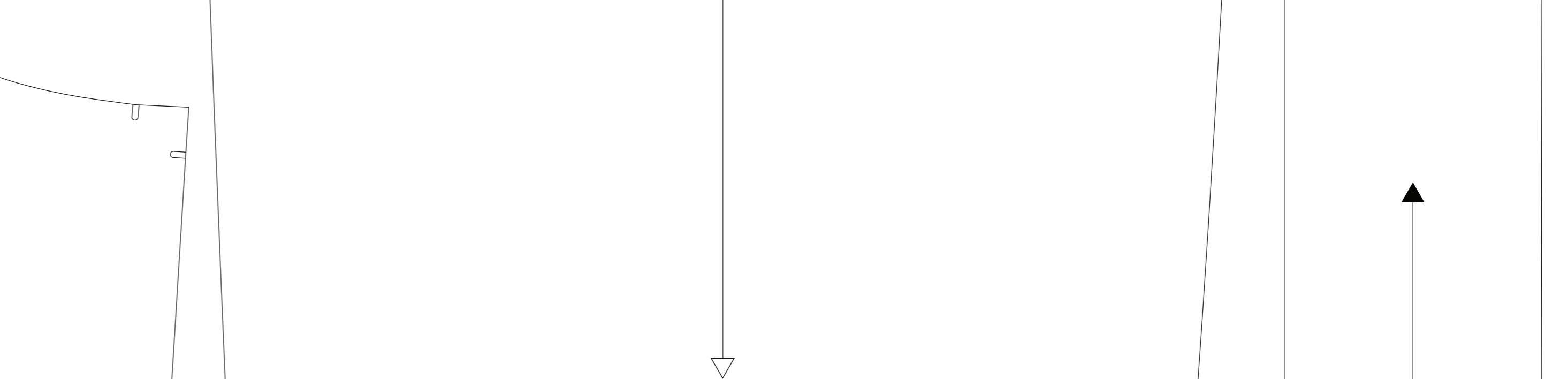
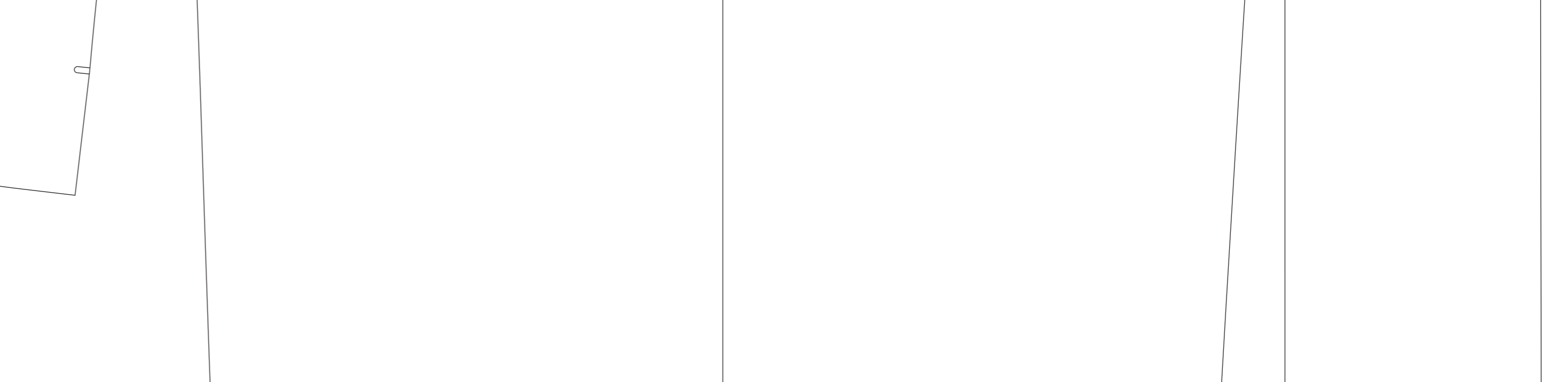
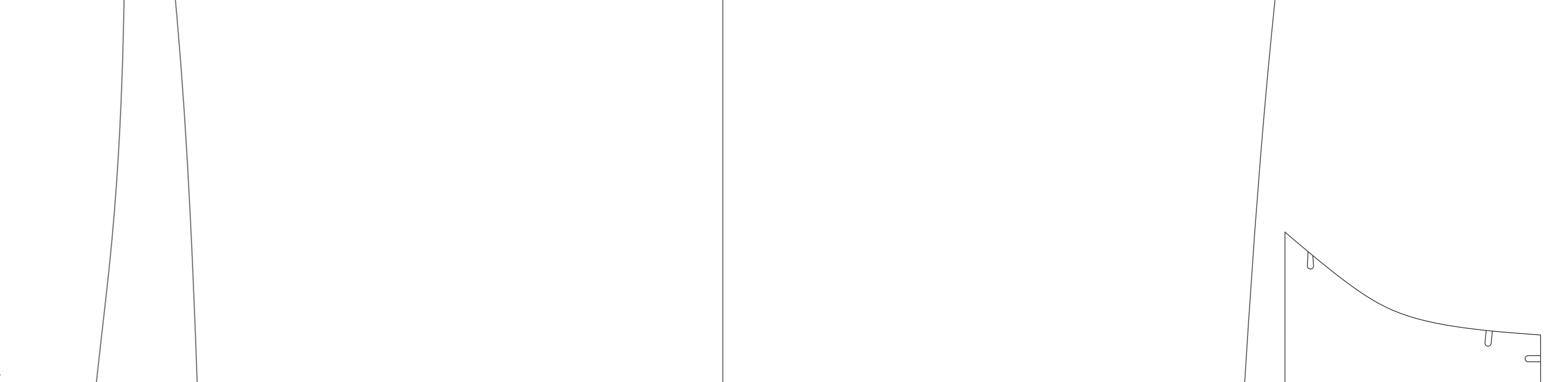
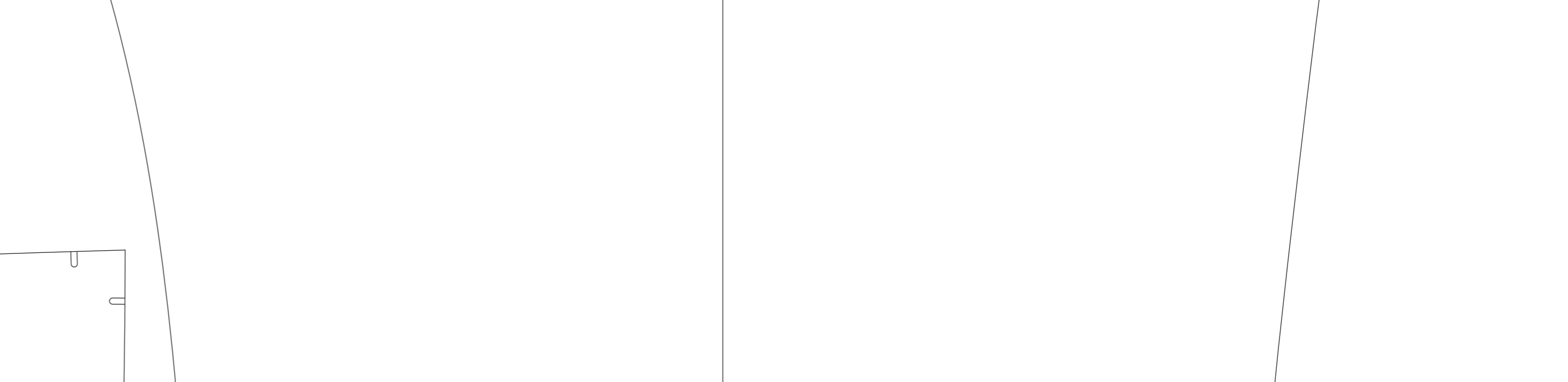
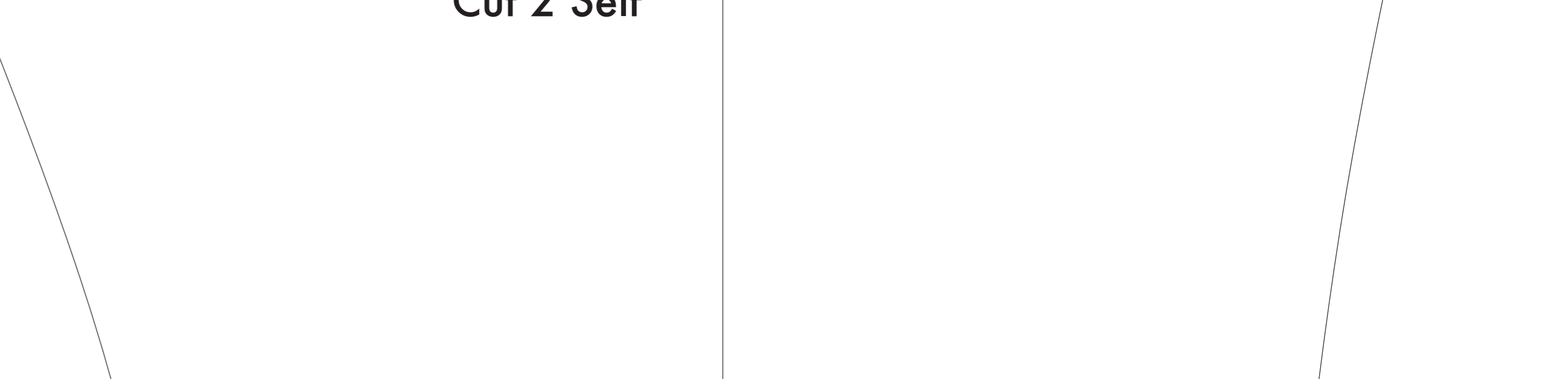
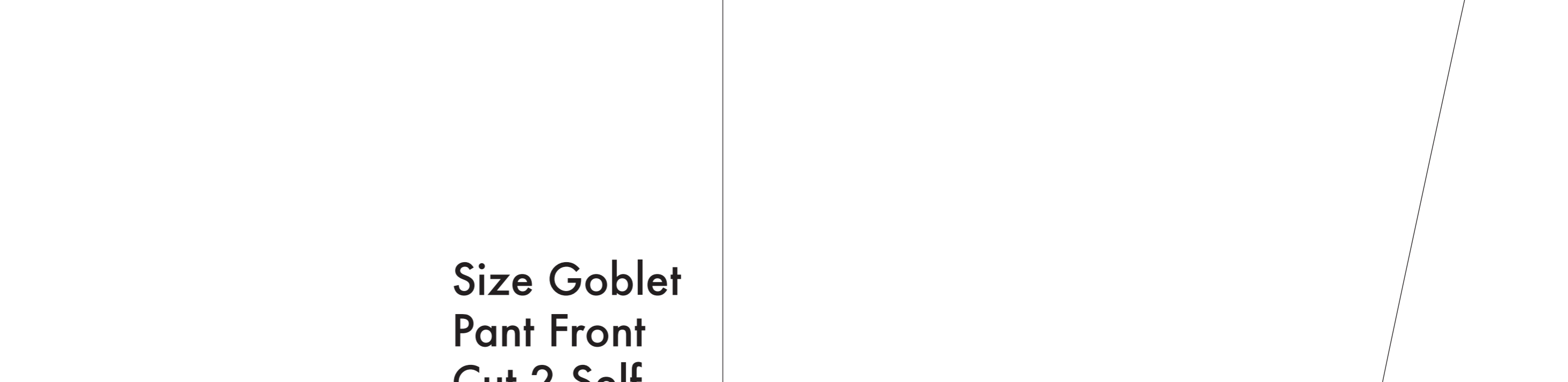
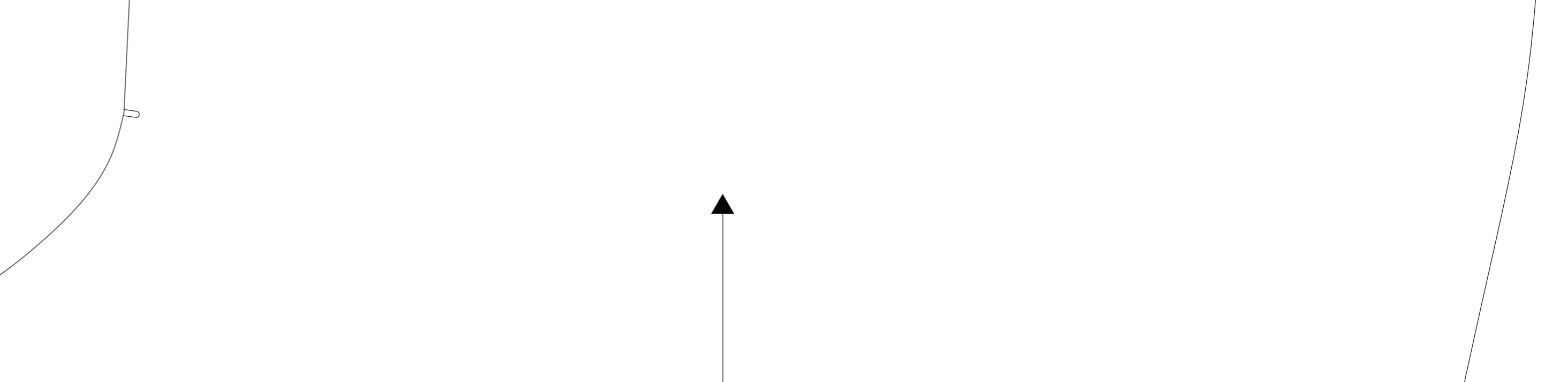
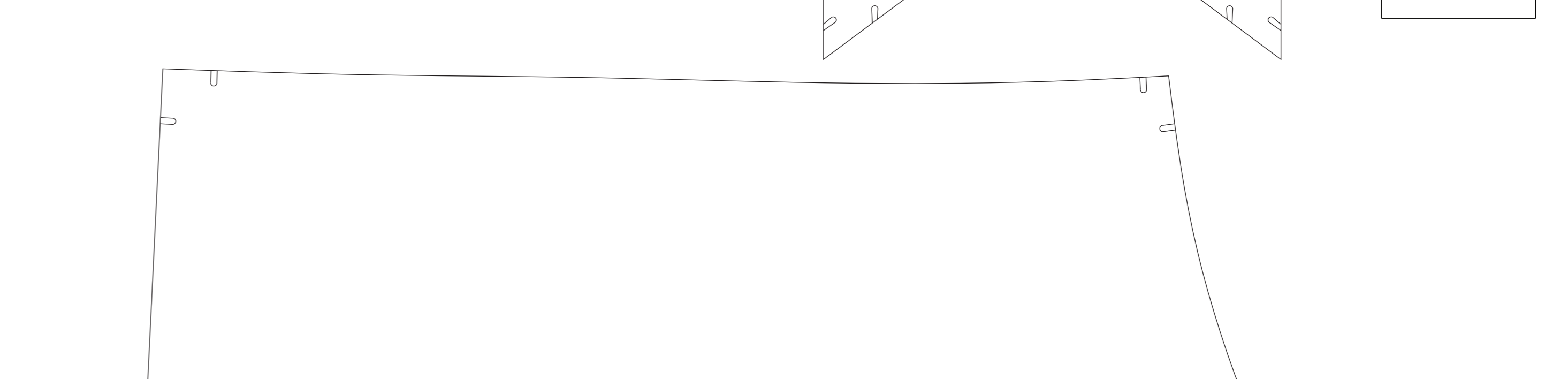
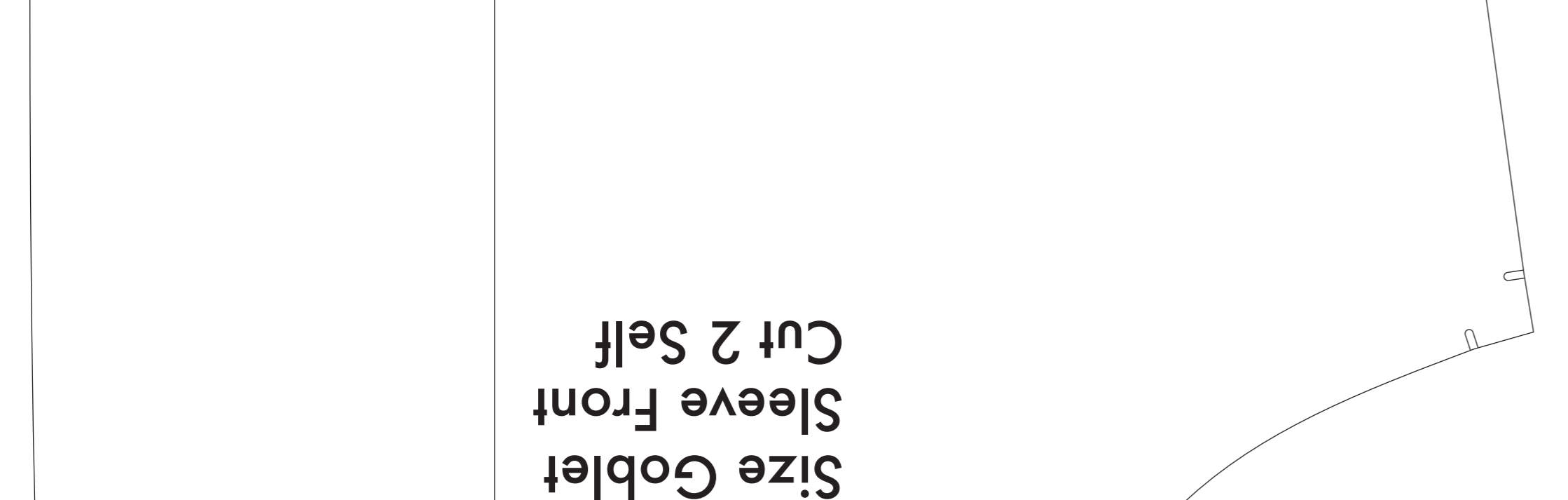
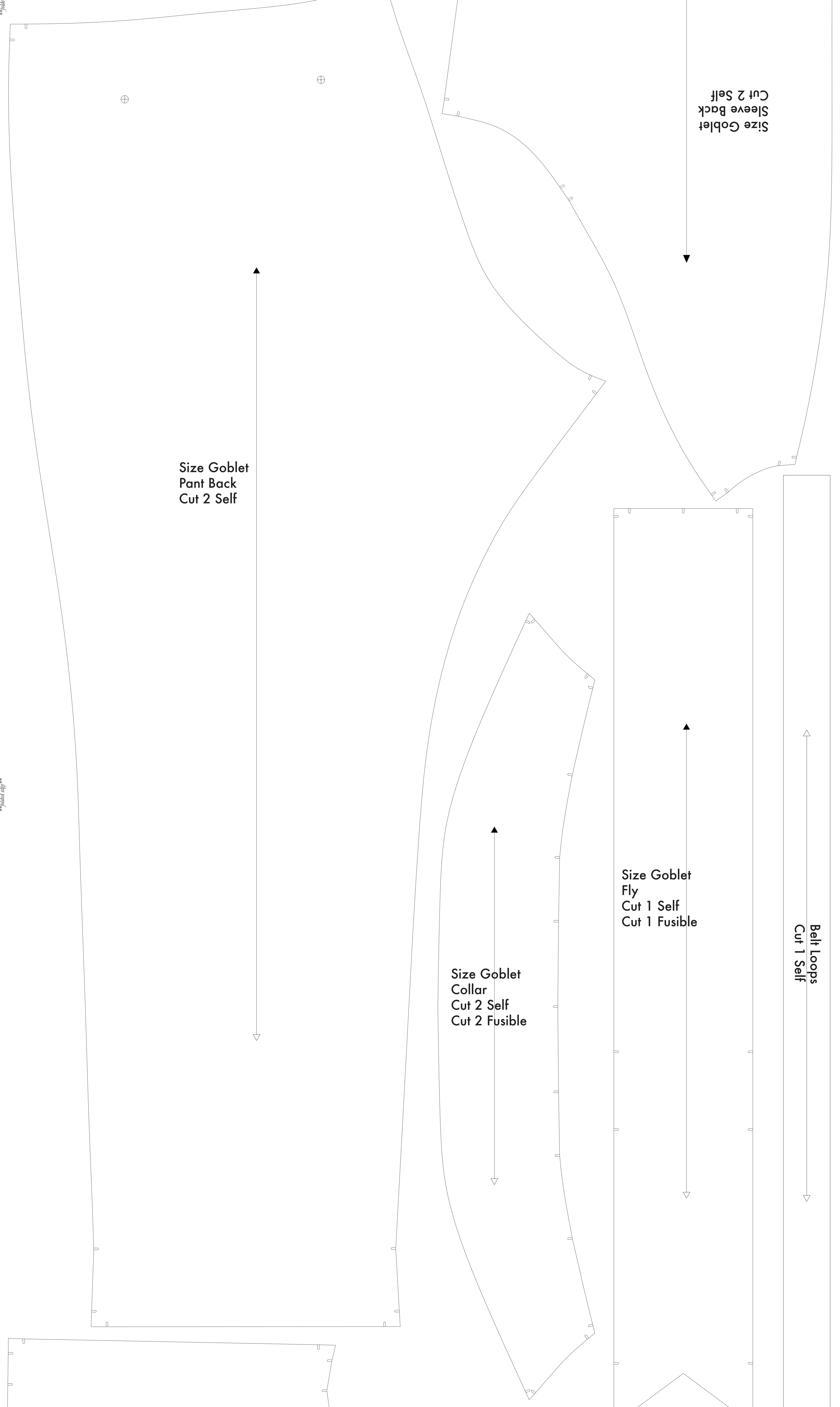
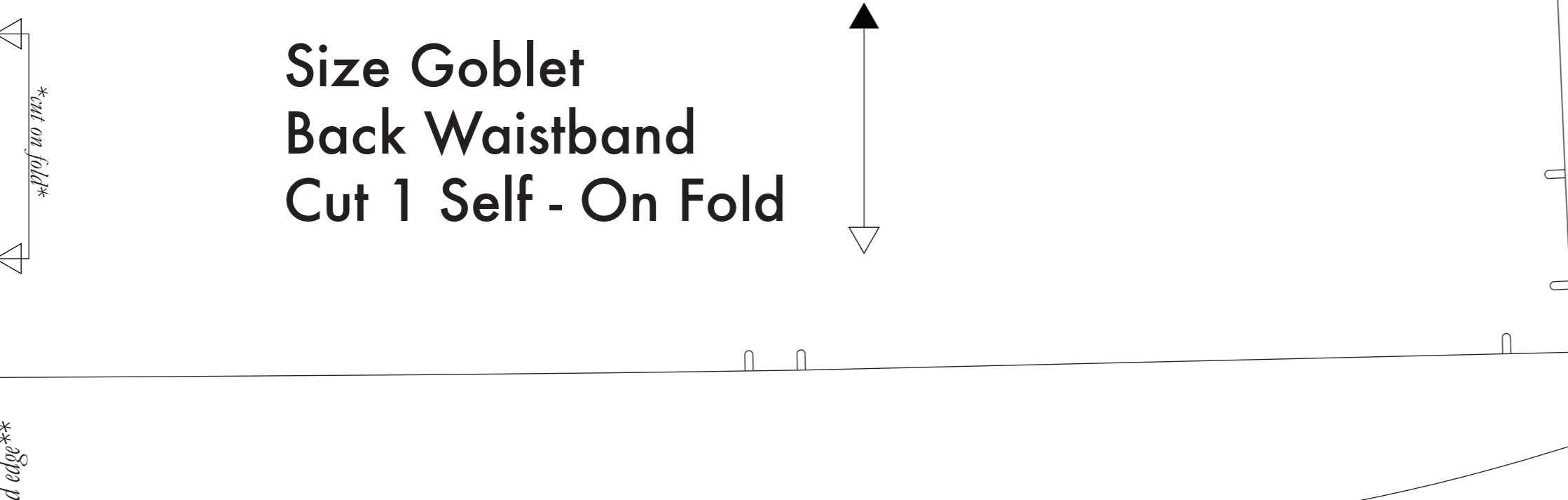
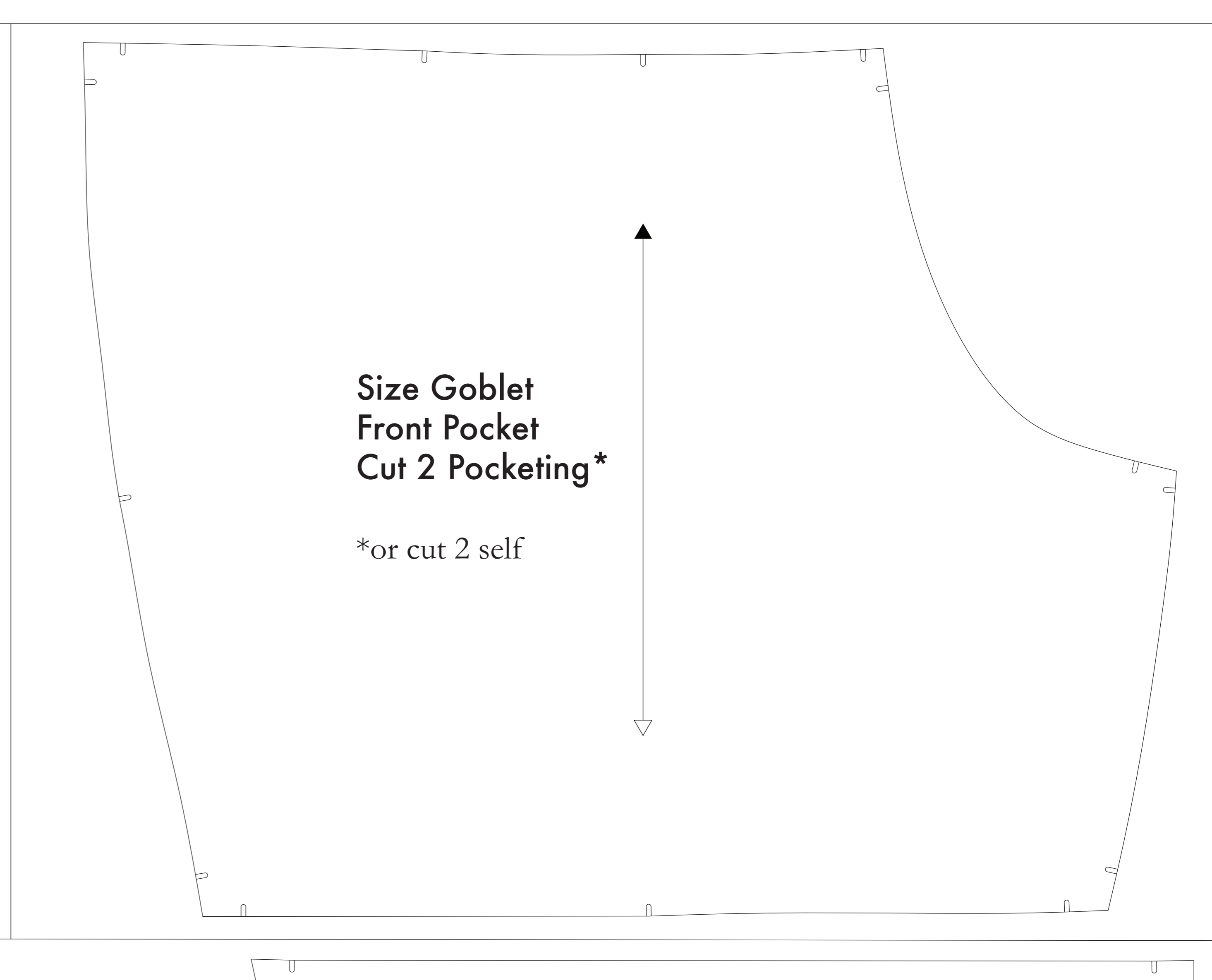
If your fabric is less than 14" wide, you will need to use pattern pieces that are smaller than the ones provided. The pieces provided are for fabric that is 14" wide or larger. If you have a piece of fabric that is less than 14" wide, you will need to use a smaller piece of fabric. The pieces provided are for fabric that is 14" wide or larger. If you have a piece of fabric that is less than 14" wide, you will need to use a smaller piece of fabric.

**NOTE B: FABRIC WITH NAP OR DIRECTIONAL PATTERN**

For fabric with a nap, such as velvet or tulle, or fabric with a directional pattern, such as a floral or geometric pattern, you will need to use a smaller piece of fabric. The pieces provided are for fabric that is 14" wide or larger. If you have a piece of fabric that is less than 14" wide, you will need to use a smaller piece of fabric.

**NOTE C: USING FUSIBLE INTERFACING**

Fusible interfacing is a material that is used to stiffen fabric. It is used to stiffen fabric that is used to make bags. It is used to stiffen fabric that is used to make bags. It is used to stiffen fabric that is used to make bags.

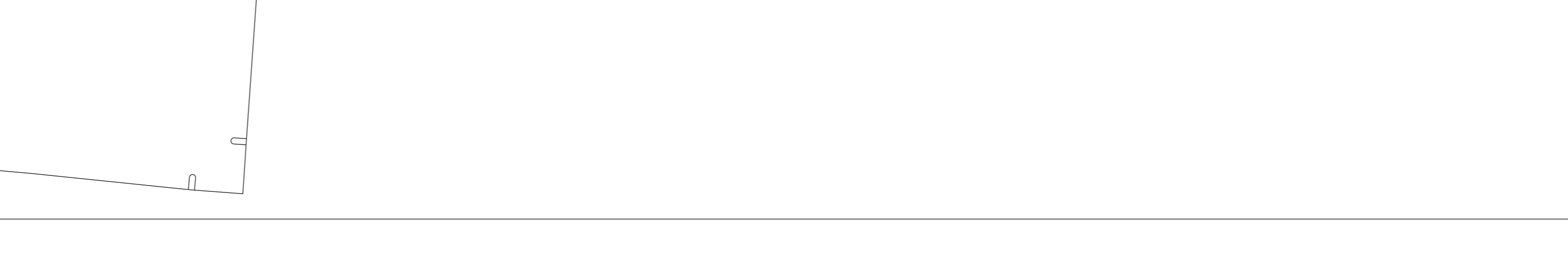
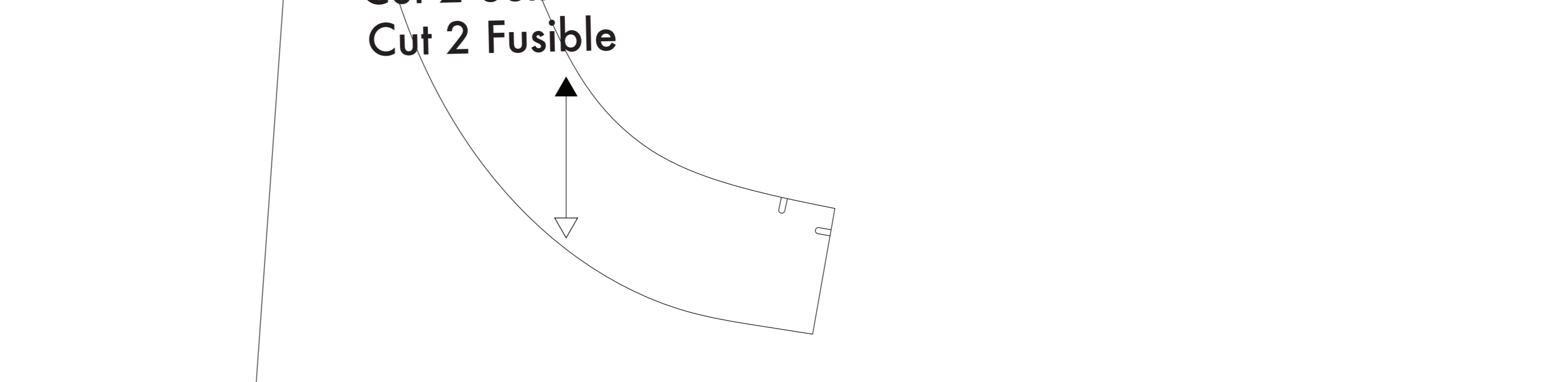
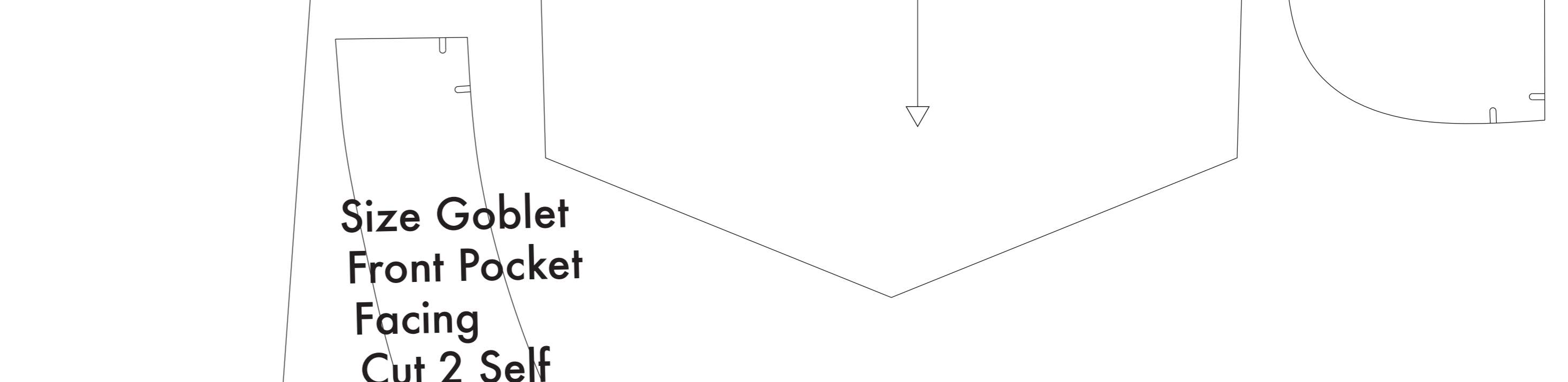
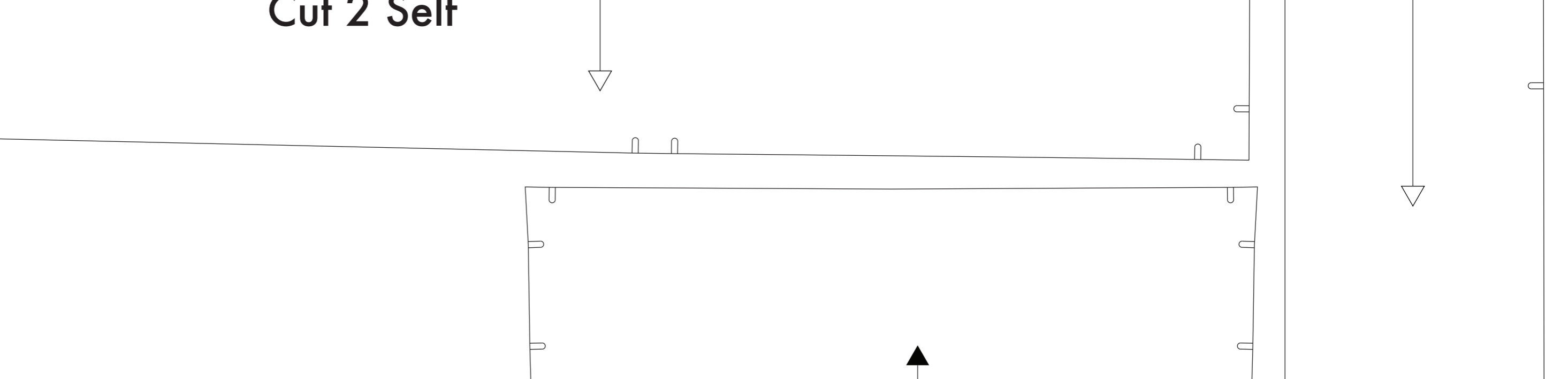
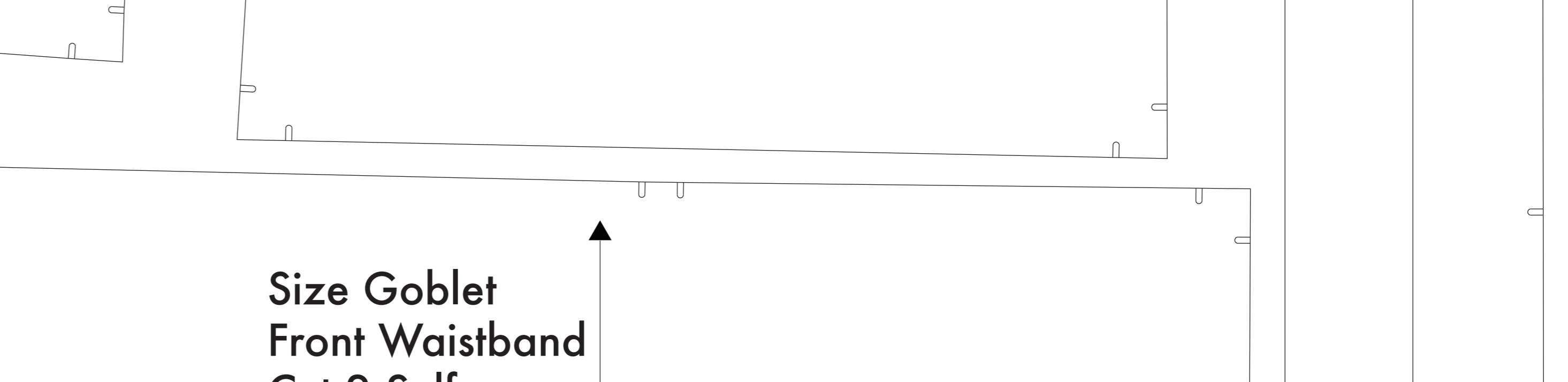
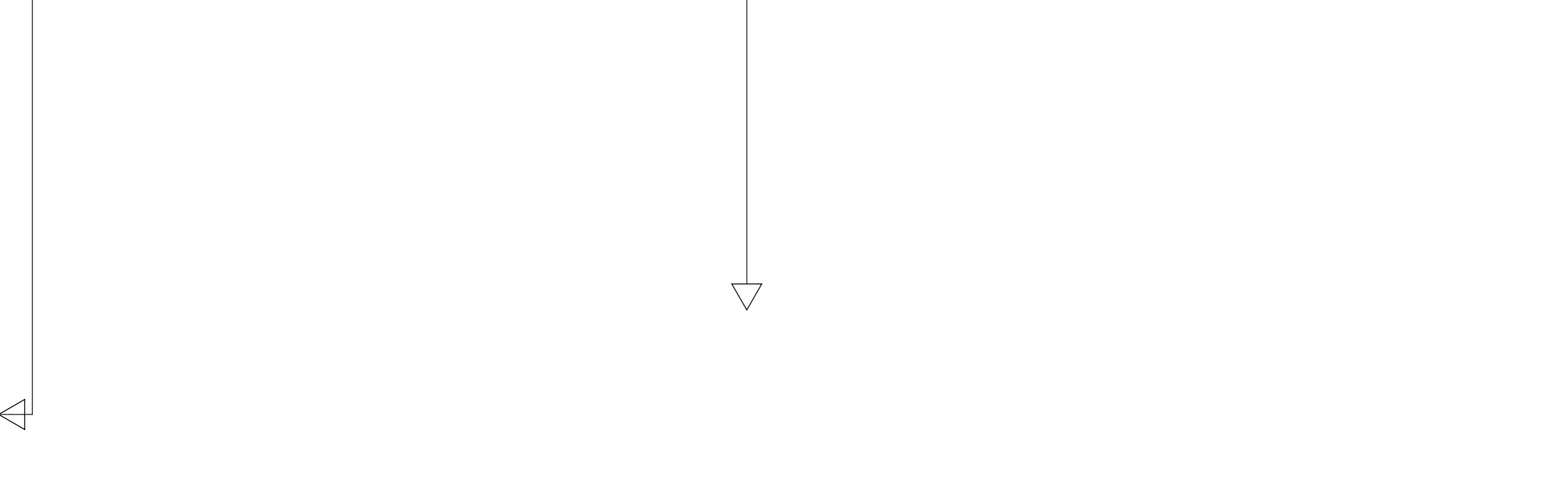


Before cutting your fabric measure this square to make sure that the pattern is scaled correctly\*

\*Using printed and software will automatically scale large size images which will give the fit.

The inner square should measure 4" x 4"

The outer square should measure 12cm x 12cm



Belt Loops Cut 1 Self

Size Goblet Sleeve Back Cut 2 Self

Size Goblet Fly Cut 1 Self

Size Goblet Collar Cut 2 Self

Size Goblet Front Pocket Backing Cut 2 Self

Size Goblet Bodice Front Cut 2 Self

Size Goblet Front Pocket Cut 2 Self

Size Goblet Fly Facing Cut 1 Self

Size Goblet Fly Facing Cut 1 Fusible