

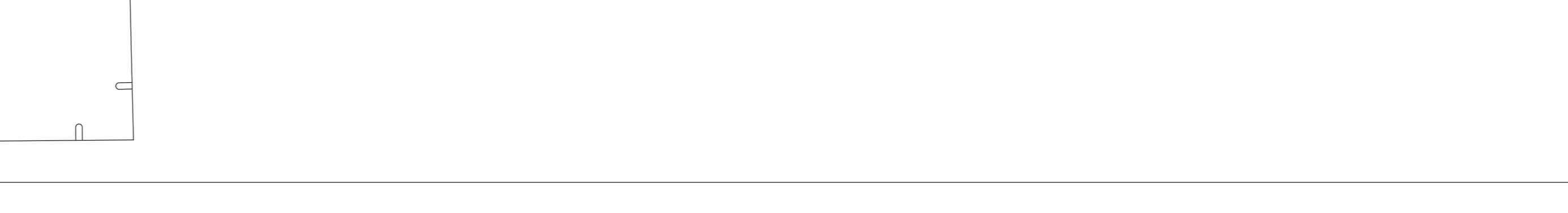
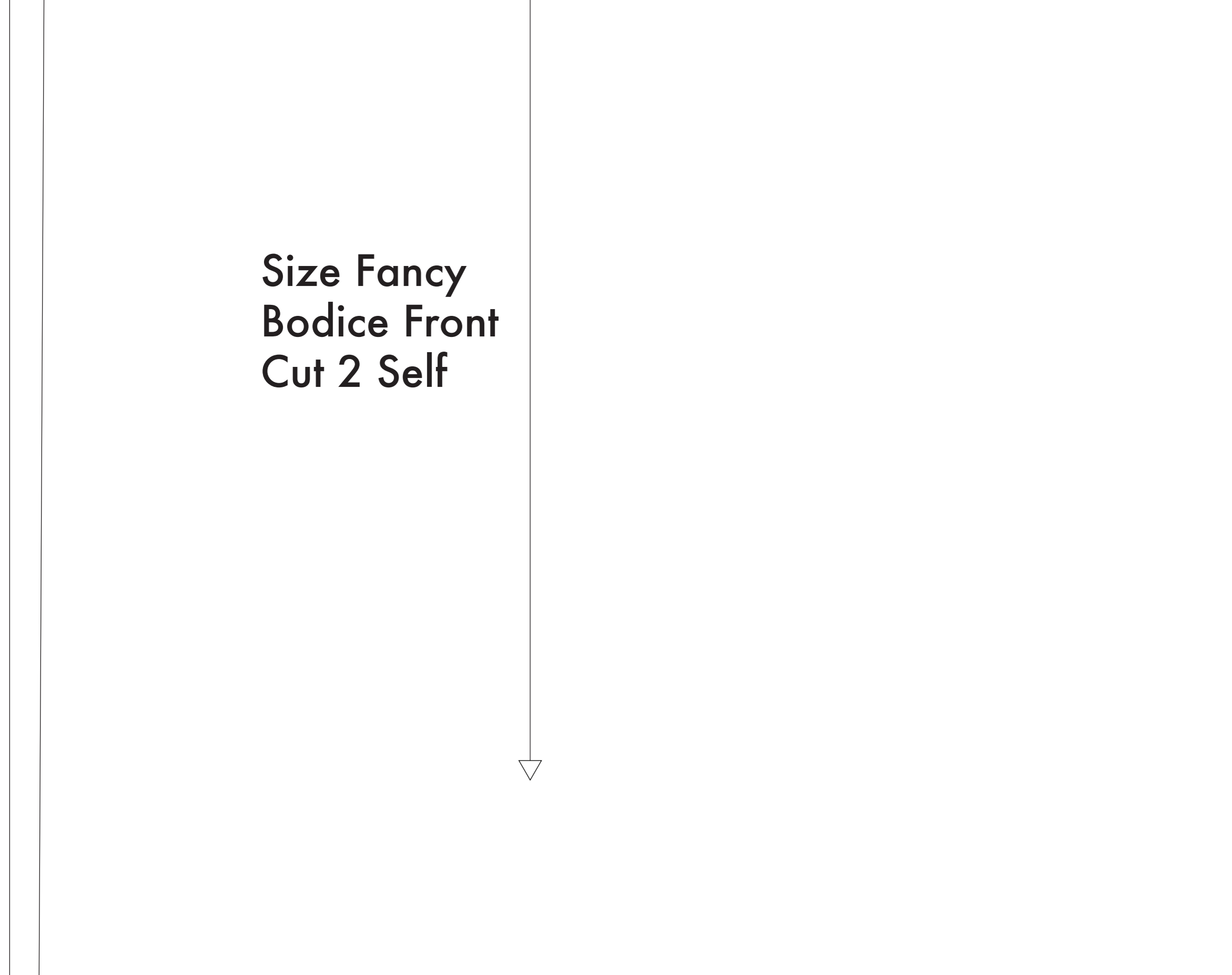
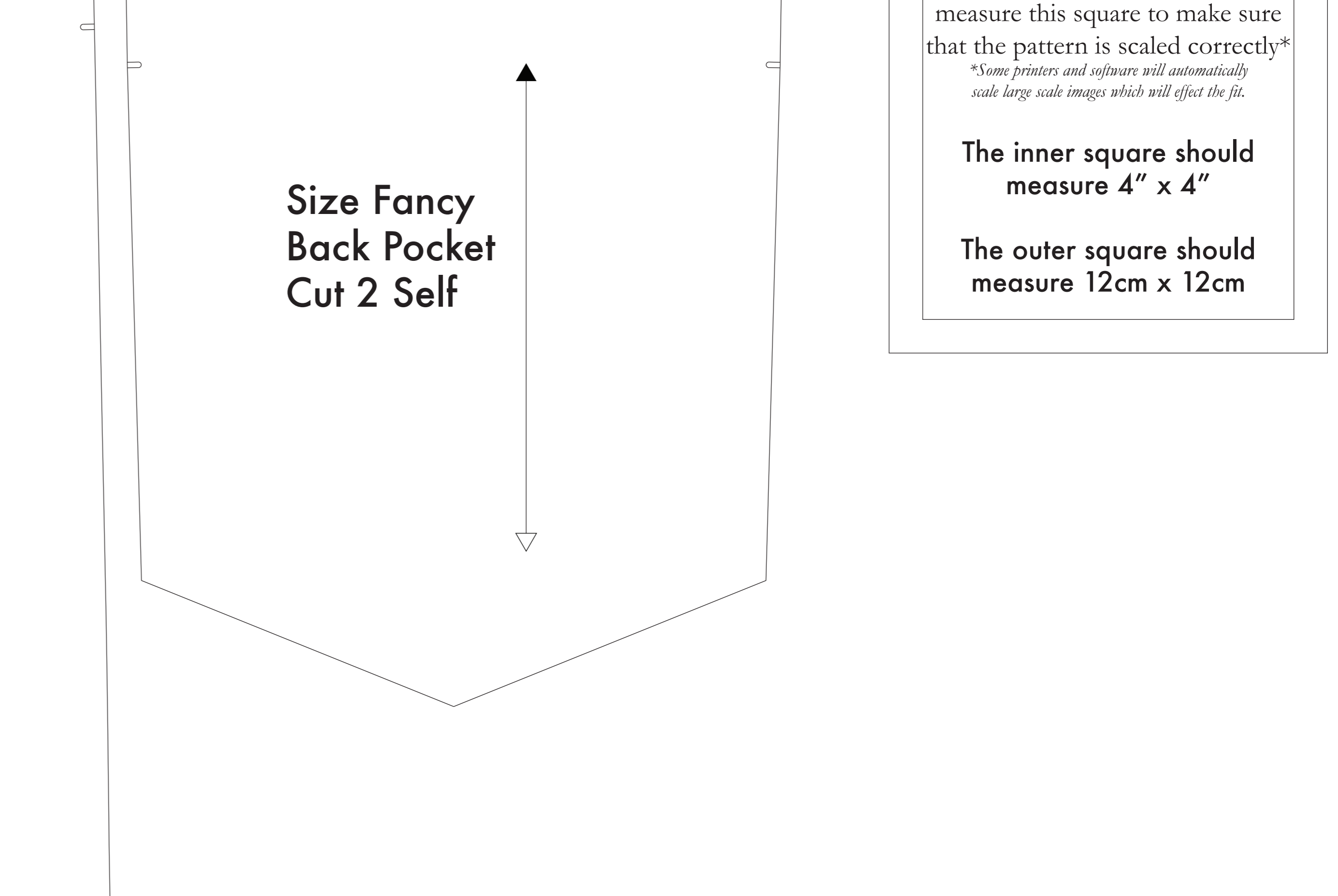
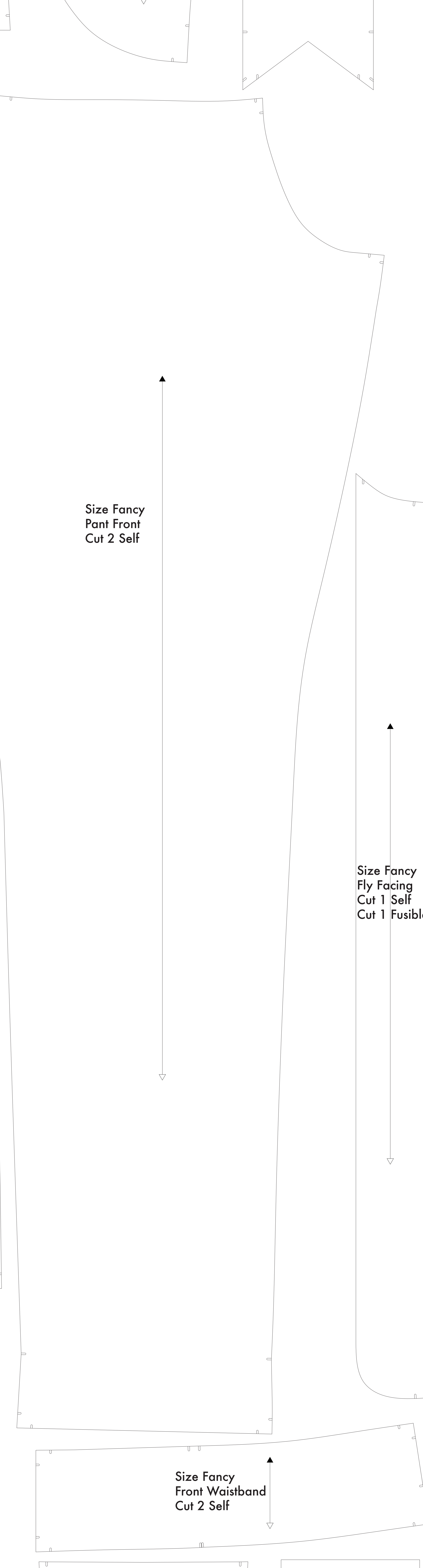
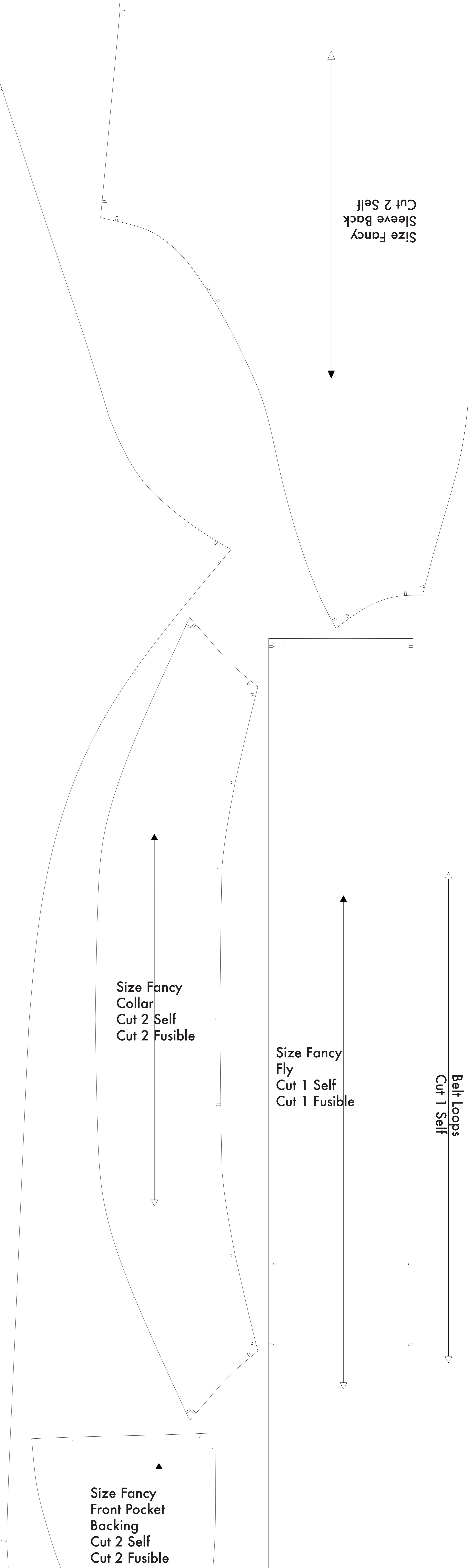
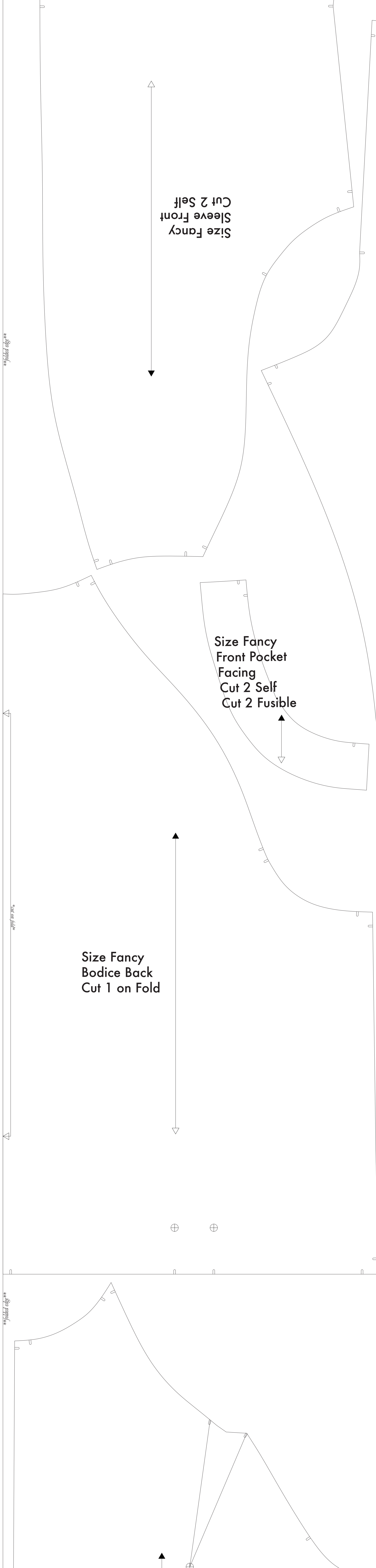
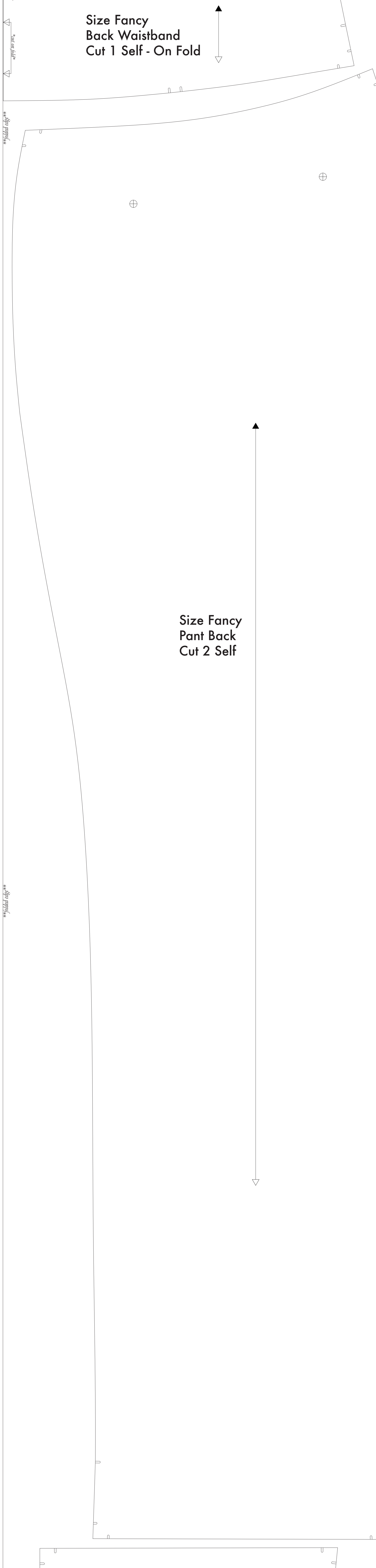
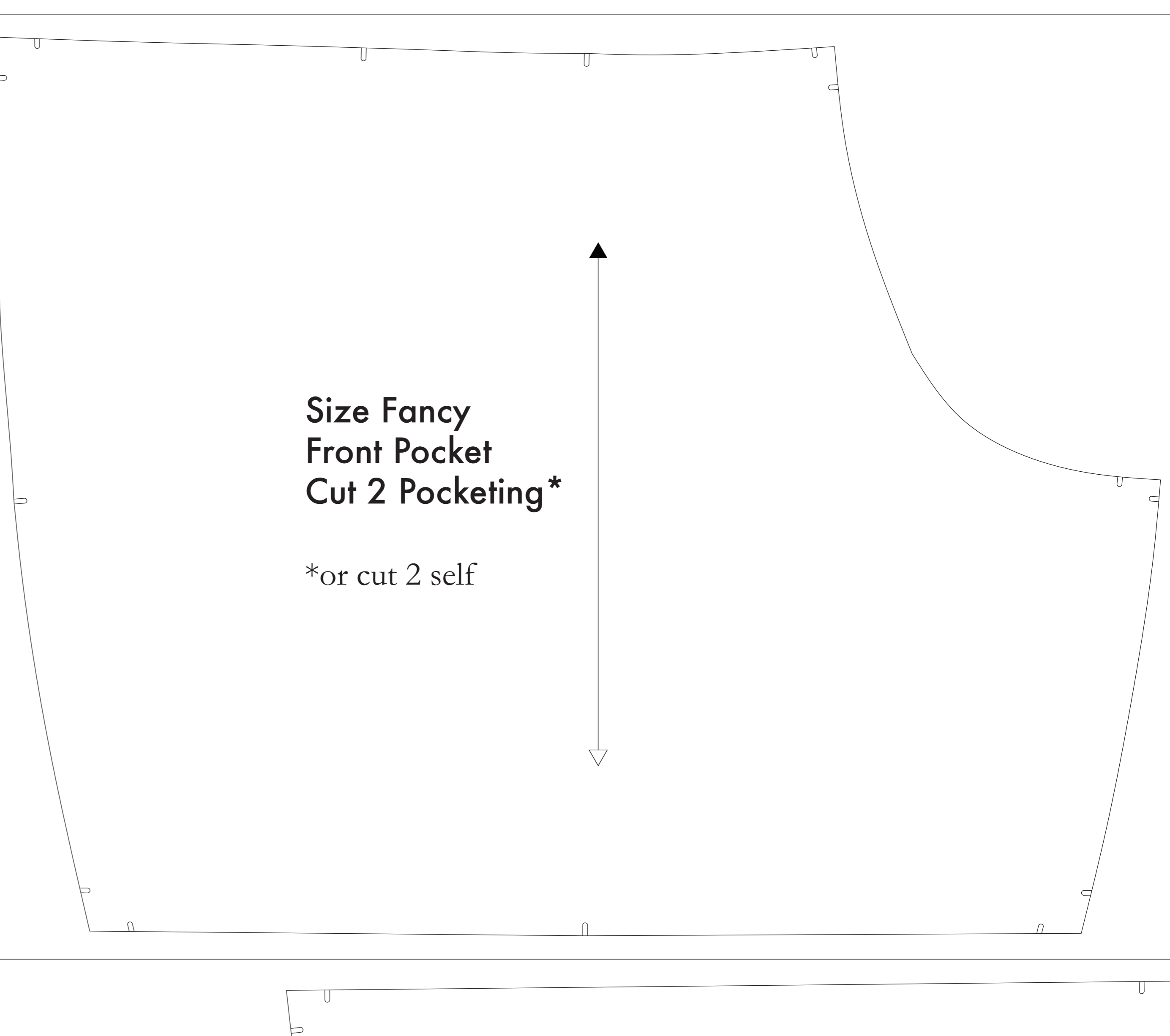
JUMPSUIT CUTTING INSTRUCTIONS

©2020 by The Seamstress Collective. All rights reserved.

- SUPPLIES NEEDED**
- 3/4" WIDE FUSIBLE INTERFACING
 - 3/4" WIDE CF 5/4" WIDE FABRIC
 - SHARP SCISSORS
 - REMOVABLE MARKING MEDIUM (chalk, wax, tailor's tack, etc.)
 - 80/20 NON-SEPARATING ZIPPER
 - THREAD
 - SEWING MACHINE
- optional:**
- 1/2" FABRIC OF THINNER POCKET FABRIC
 - FUSIBLE INTERFACING

- CUTTING INSTRUCTIONS**
1. Print pattern. Use the print file document that on sheet of standard size paper and tape the sheets together or print on a wide format printer (36" or wider). Print sheets offer the service for approximately \$12. If available to you, the \$200 wide format is a better printing option.
 2. Once your pattern is printed, cut along the outermost rectangle to remove any excess paper. The template should fit exactly over a 54" wide or larger piece of fabric that has been folded in half. If your fabric is less than 54" wide, use a smaller piece of fabric with a 4" dimensional piece on **NOTE 1**.
 3. Fold your fabric in half along the lengthwise grain matching selvage edge to selvage edge. Selvage to the self (folded edge of fabric). This center marker helps the fabric from twisting or fraying. Once it is an edge that resembles any fraying, though just as frequently, a clearly finished line will be found. Avoid this edge as your cut piece as the center (fraying) differs from the main body of the fabric.
 4. Place the paper template on top your fabric, matching the folded edge of the fabric with the side of the paper marked "folded edge".
 5. Place pins throughout the template pinning together both layers of fabric as well as in the paper.
 6. Use around the perimeter of each piece.
 7. Leaving the pins in place, you will need to unpick each of the stitches, taking care to not step beyond the end of the "V" shape!
 8. **Draw in the "L" shape marking that is used throughout the pattern.**
From machine, make sure all seam marks, which also are self and self.
These are also used to mark, which are used for the following notes:
 9. **Note B: FABRIC INTERFACING OR DIRECTIONAL PATTERN**
 This will be found on the "Front Pocket Backing", "Belt Loops", and "Front Pocket Facing" and "Fly Facing" pieces. These pieces that are marked with the directions "Cut 1 Fusible" or "Cut 2 Fusible". These pieces are: the Collar, Fly, Fly Facing, Front Pocket Facing, and Front Pocket Backing. To cut the fabric, lay the material down with the "L" mark facing up. Then place your pattern down and cut around the perimeter of each piece and mark.
 10. **Note C: USING FUSIBLE INTERFACING**
 The front Pocket Bag may be cut along the "folded edge" of the fabric as well as the side of the fabric marked "L" will find an example of interfacing in any part of the pattern.

NOTE A: FABRIC LESS THAN 54" WIDE
 If your fabric is less than 54" wide, you will need to cut each piece on one side of the fabric. To do this, you will need to take the pattern pieces on one side of the fabric and cut them out. The quantity mentioned on the pattern file will be on one side only. These pieces will be marked with arrows to point of the fabric. When cutting, please use a good fabric marker. You will need to pin the fabric to the pattern piece. To ensure that you are pinning to the correct side of the fabric, please mark the center of the fabric with the "L" shape marking in the paper. When you are ready to cut, please pin the paper to the fabric. This will help you to ensure that you are pinning to the correct side of the fabric. The arrows to the right of the pattern piece are correctly placed.



Before cutting your fabric measure this square to make sure that the pattern is scaled correctly*
 *Clear pattern and surface will automatically scale large with image which will affect the fit.
 The inner square should measure 4" x 4"
 The outer square should measure 12cm x 12cm