

SUPPLIES NEEDED
 • 3" YARDS OF 44" WIDE FABRIC
 • SHARP SCISSORS
 • REMOVABLE HARKING MEDIUM (shulk, wax, tailor's rock, etc.)
 • 1 - 24" NON-SEPARATING ZIPPER
 • THREAD
 • SEWING MACHINE
NOTES:
 • 1/2 YARD OF THINNER POCKET FABRIC
 • FUSIBLE INTERFACING

CUTTING INSTRUCTIONS
 1. Print pattern. You can print this document filed on sheets of standard size paper and tape the pieces together, or print on a wide format printer (36" or wider). Print sheets other than the first for approximately \$12. If available to you, the B2D recommends wide format printing.
 2. Once your pattern is printed, cut along the measurement markings to remove any excess paper. This template should fit exactly on a 34" wide or larger piece of fabric that has been folded in half. If your fabric is less than 34" wide, use a 1/2" seam allowance and the pattern is laid out for fabric that does not have a direction. For fabric with a nap, use fabric as laid along the lengthwise grain matching selvage edge to selvage edge. Sewage in the self-fabric edge of fabric. The narrow bustline across the fabric from waistline to top edge. When it has an edge that matches into the top, through just a frequently, a clearly marked line will be found. Avoid this edge as your cut piece as the excess frequently differs from the main body of the fabric.
 3. Place the paper template on top your fabric, matching the folded edge of the fabric with the side of the paper marked "folded edge".
 4. Place pins throughout the template pinning together both layers of fabric as well as the paper.
 5. Cut around the perimeter of each piece.

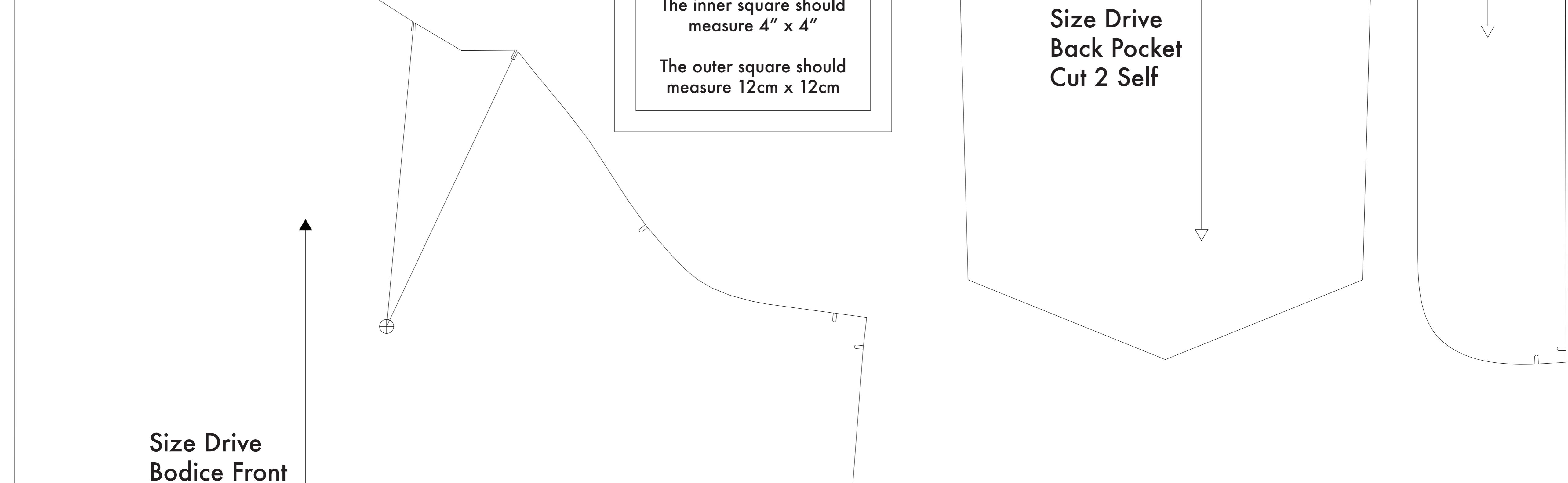
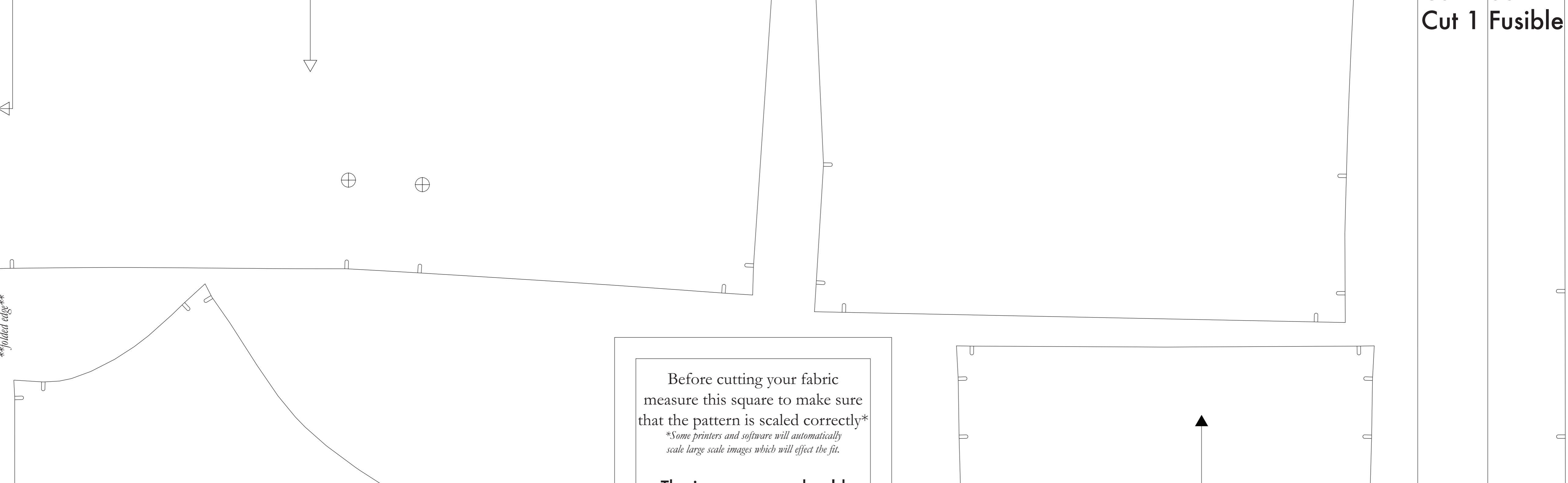
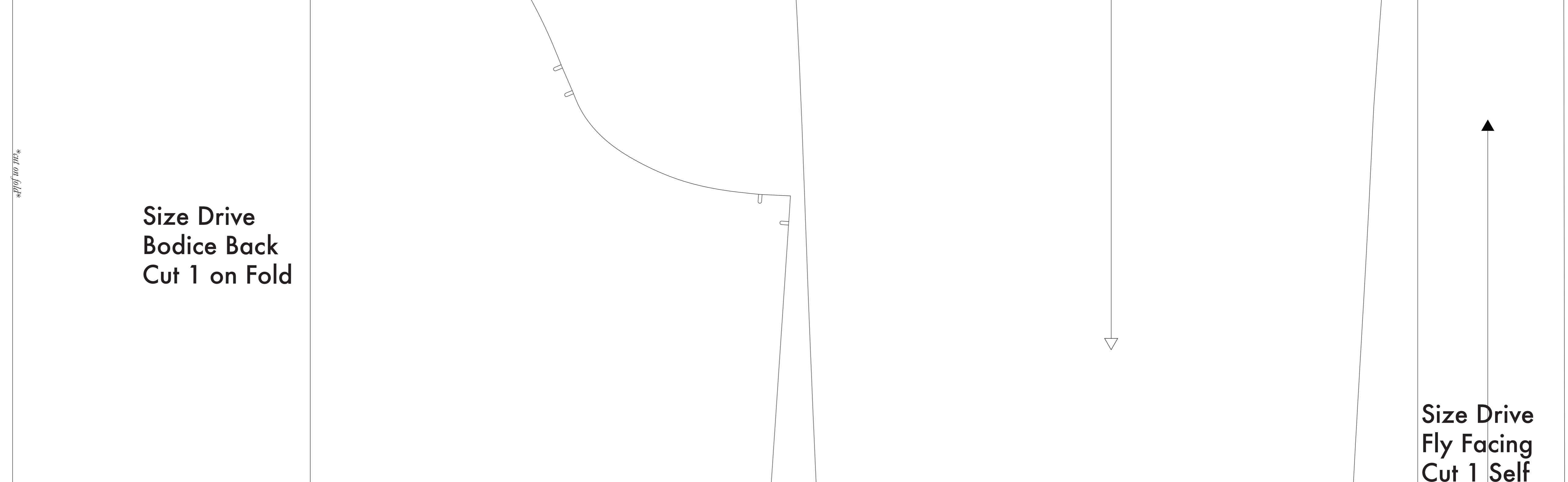
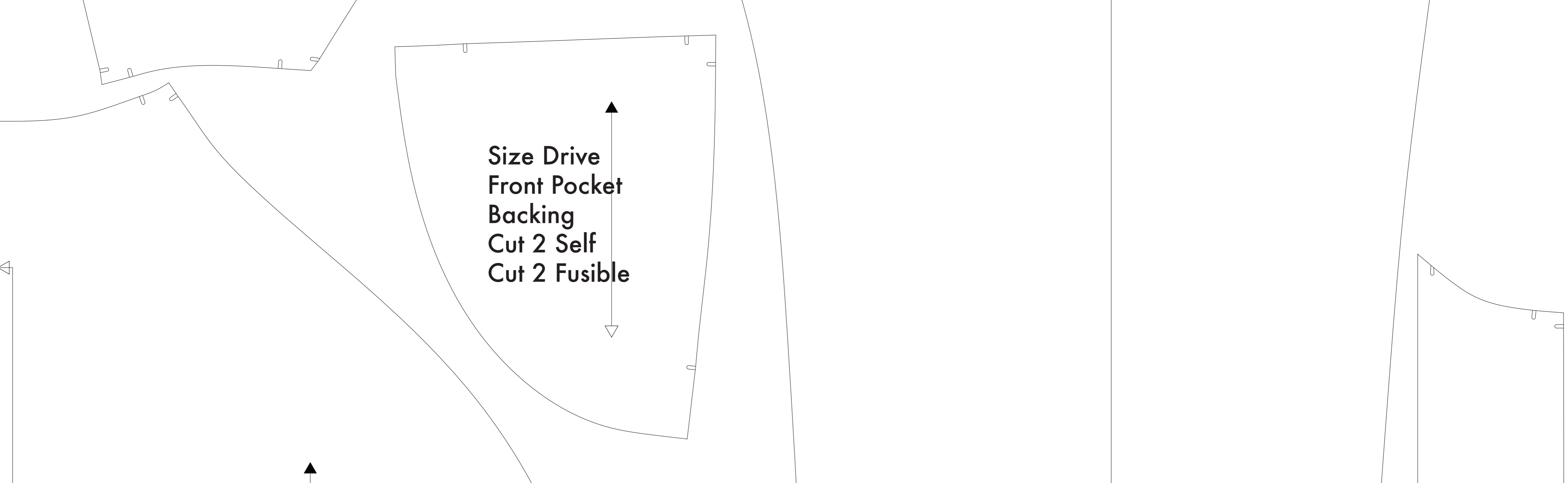
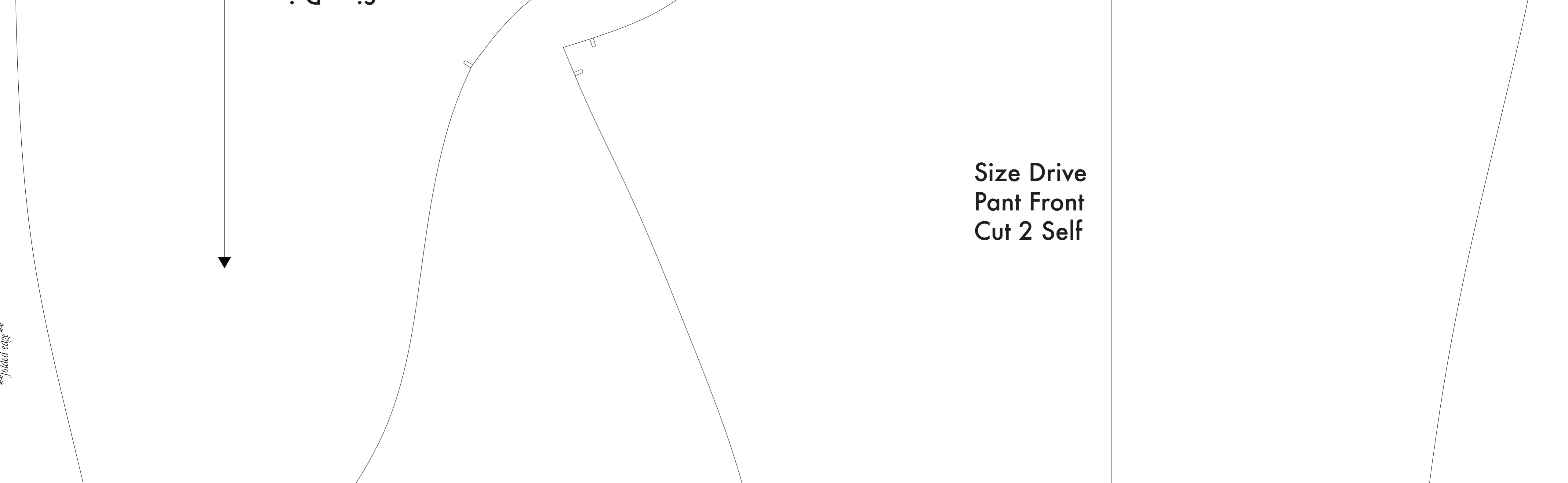
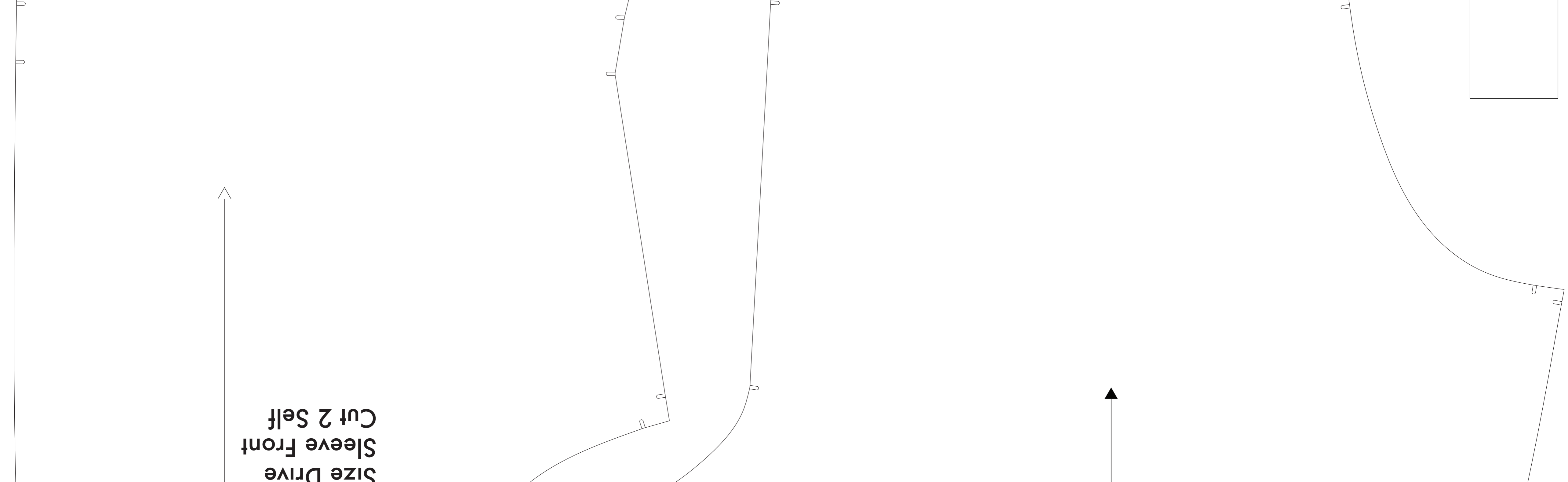
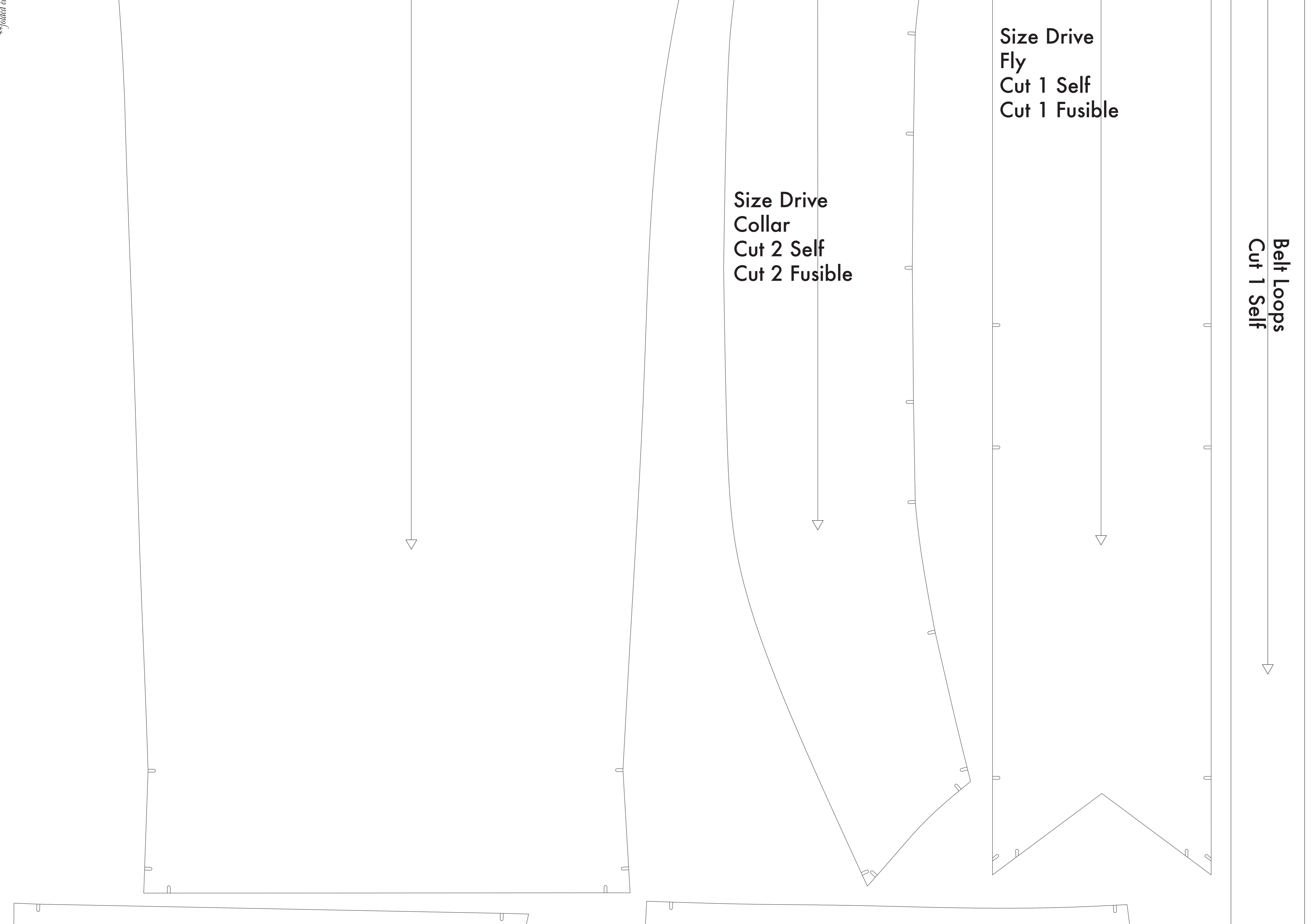
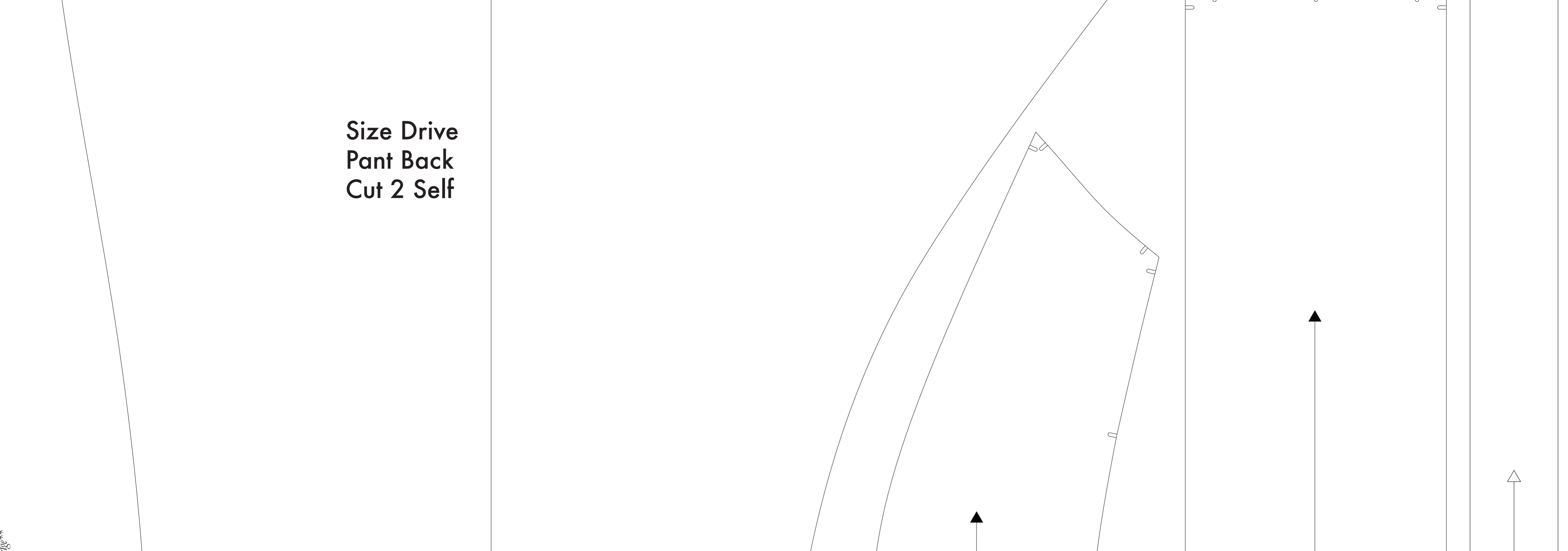
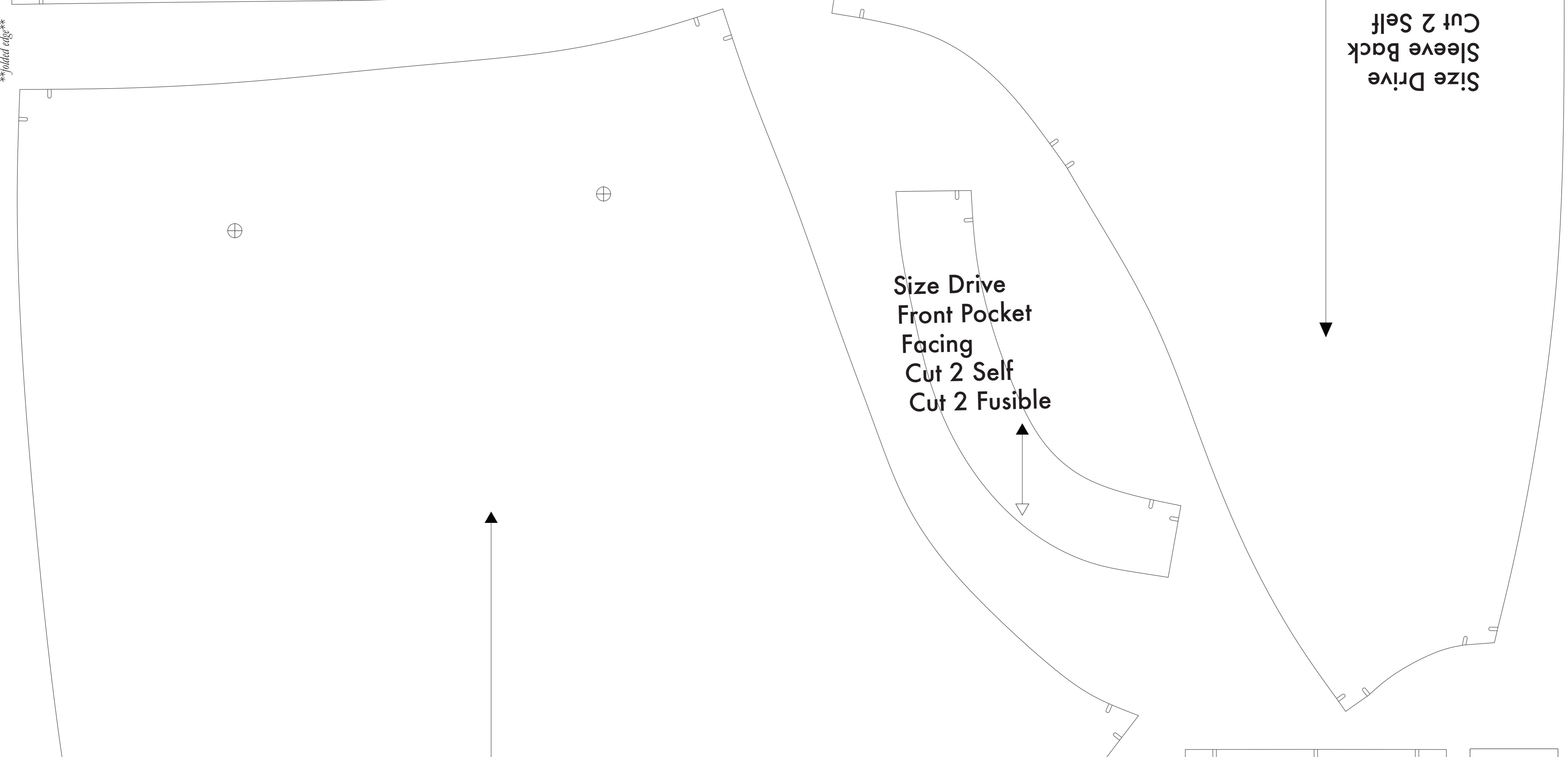
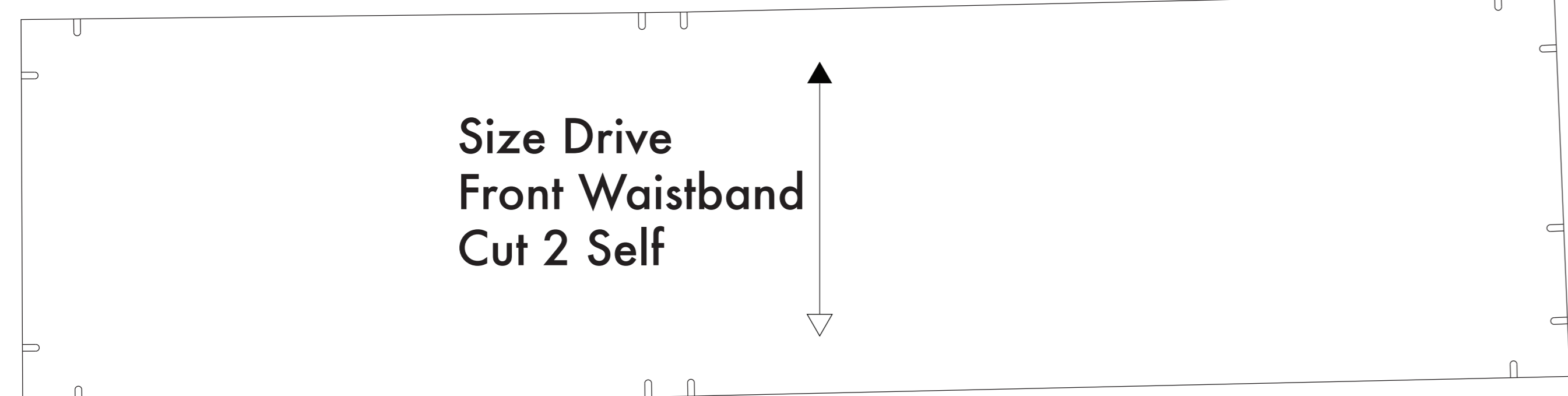
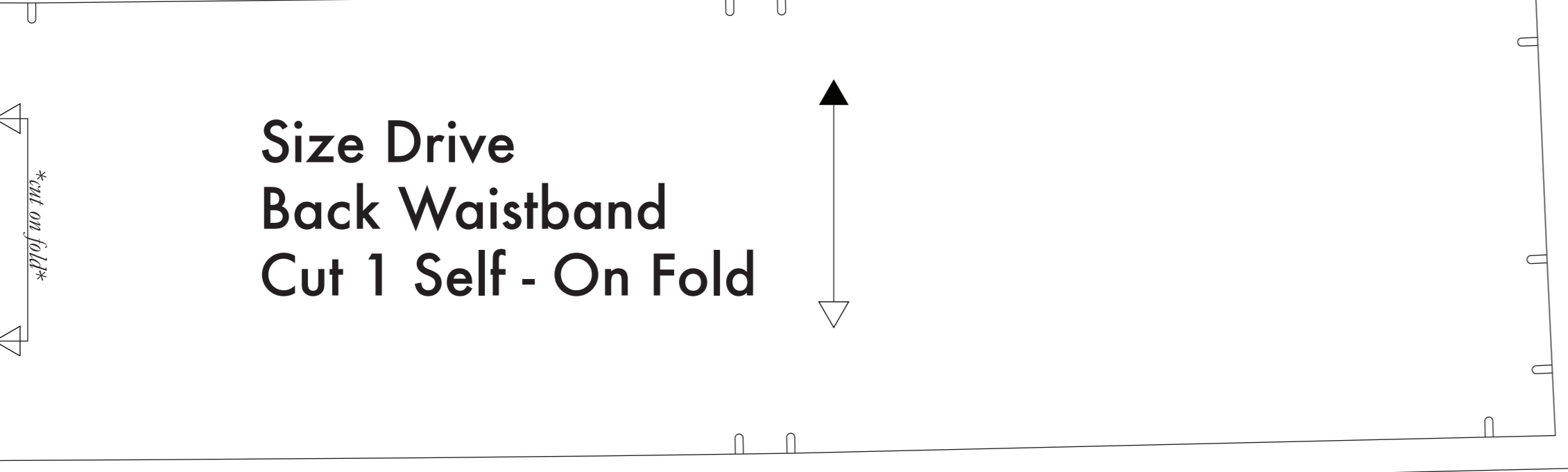
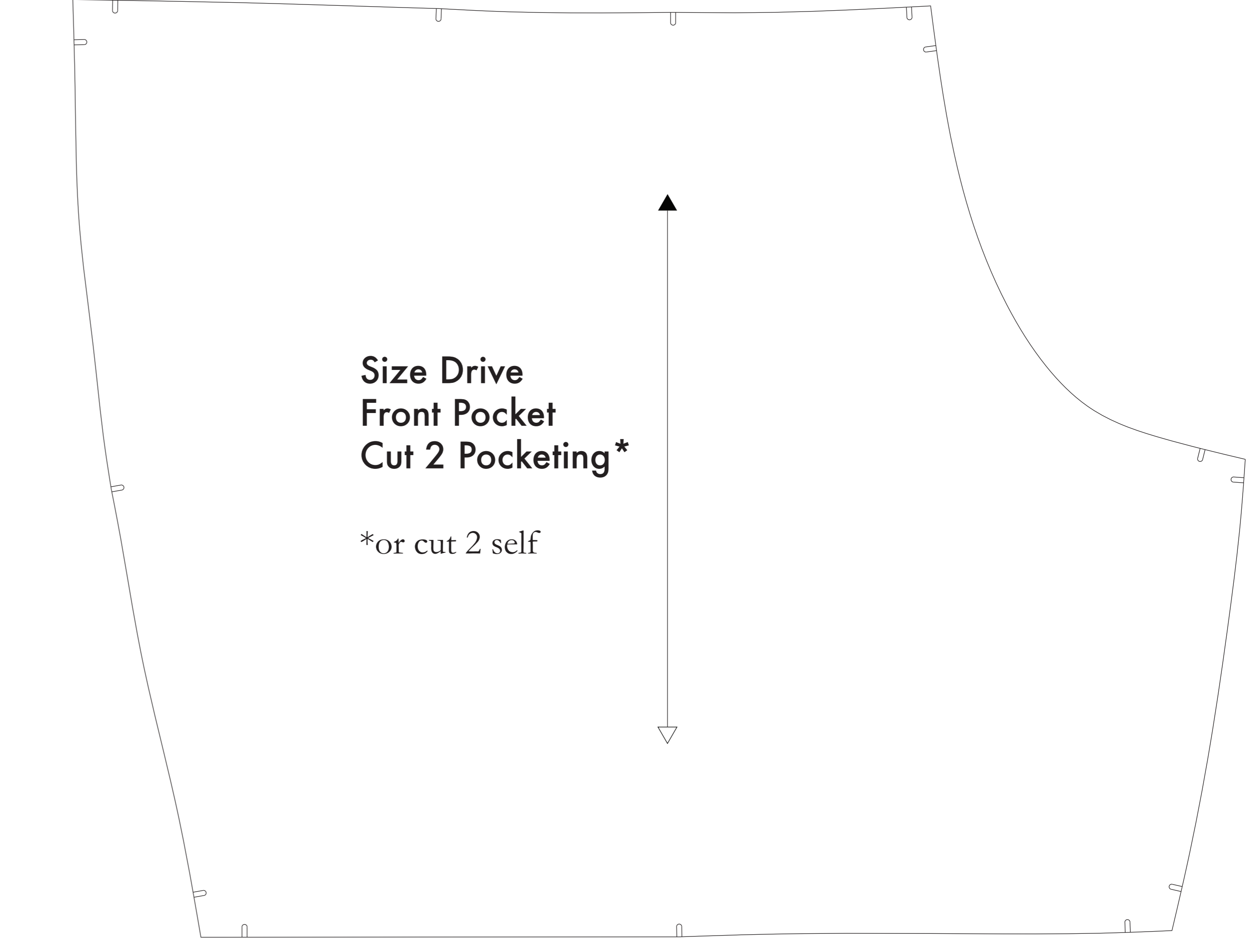
6. Leaving the pins in place, you will next need to strip each of the notches, taking care to not strip beyond the end of the fabric.
 Notches are the 1/4" depth markings that are found throughout the pattern.
 Seam and/or collar seam allowance markings, which when cut will give you 1/2" seam allowance.
 7. Mark all notches and fold lines. Using a pin, bring together both layers of fabric, and the pattern, mark the center of each notch with chalk, wax or other removable, non-permanent mark. A tailor's mark may also be used. This center fold line or marking is indicated by a dashed line.
 Flip and/or Sewage on the Front Back, Back Back, and if you prefer, center the seam drive on the Back Front.

8. **OPTIONAL:** Cut fusible interfacing pieces (see **NOTE C** for more info). Pattern pieces that use fusible will be marked with the direction "to 23" fusible" or "to 1" fusible". These pieces are the Collar, Fly, Fly Facing, Front Pocket Facing, and Front Pocket Backing. To cut the fusible, lay the material down with the glue side facing up, then place the paper pattern down and cut around the perimeter of each piece and notch.
 9. Cut the Front Pocket Bag out of a lighter pocketing material. If you are not using a pocketing material, then the Front Pocket Bag may be cut directly from the pattern piece. Pocketing is used to make a pocket that is made of a lighter material. You will find an example of pocketing on any pair of blue jeans.

NOTE A: FABRIC LESS THAN 34" WIDE
 If your fabric is less than 34" wide, you will need to cut each pattern piece individually from the paper template and place a piece of your fabric with pins to pin together each pattern piece. Do not cut the pattern pieces together until you have pinned them to your fabric. Do not use the pocketing bag for the single layer, but use two pieces of fabric. This means that you will need to cut two pieces of fabric. To save time, you may wish to use the pattern pieces for the front and back pieces, and use the pattern pieces for the front and back pieces, and use the pattern pieces for the front and back pieces.

NOTE B: FABRIC WITH NAP OR DIRECTIONAL PATTERN
 If your fabric has a nap or a directional pattern, please refer to the instructions for fabric with a nap or a directional pattern. The pattern pieces will be marked with a directional arrow. The directional arrow should be placed on each pattern piece in the same direction.

NOTE C: USING FUSIBLE INTERFACING
 Fusible interfacing is a material that is used to reinforce, stabilize, and/or shape pattern pieces. It is available in a variety of weights and textures. The Basted Dress Society recommends a light to medium weight fusible for most fabric markings in the construction of JUMPSUIT.



Before cutting your fabric measure this square to make sure that the pattern is scaled correctly*
*Some printers and software will automatically scale larger scale images which will affect the fit.
 The inner square should measure 4" x 4"
 The outer square should measure 12cm x 12cm

Belt Loops Cut 1 Self

Size Drive Sleeve Back Cut 2 Self

Size Drive Fly Facing Cut 1 Self Cut 1 Fusible