

- SUPPLIES NEEDED**
- 3" YARDS OF 1/2" WIDE FABRIC
 - SHARP SCISSORS*
 - REMOVABLE MARKING MEDIUM (chalk, wax, tailor's tack, etc.)
 - 1 - 26" NON-SEPARATING ZIPPER
 - THREAD
 - SEWING MACHINE
- OPTIONAL**
- 1/2 YARD OF THINNER POCKET FABRIC
 - FUSIBLE INTERFACING

CUTTING INSTRUCTIONS

1. Print pattern. You can print this document (not on sheets of standard size paper and tape the pieces together, or print on a scale format paper 30" x 42") or add. Print large (for the screen but approximately 85%). If available to you, the BIDS recommends wide format printing.
2. Once your pattern is printed, cut along the outermost edge to remove any excess paper. This template should be roughly a 34" wide or larger piece of fabric that has been folded in half. If your fabric is less than 34" wide see **NOTE A**. For maximum width this pattern is laid out for fabric that does not have a selvedge. For fabric with a selvedge, such as a cloth or canvas, or fabric with a clear directional grain see **NOTE B**.
3. Fold your fabric in half along the lengthwise grain matching selvedge to selvedge edge. Selvedge is the self-finished edge of fabric. This pattern looks like the fabric from underneath or wrong side of fabric. It has an edge that resembles the bottom frequently differs from the main body of the fabric.
4. Place the paper template on top of your fabric, matching the folded edge of the fabric with the side of the paper marked "folded edge."
5. Place pins throughout the template pinning together both layers of fabric, as well as the paper.
6. Cut around the perimeter of each piece.
7. Laying the piece in fabric, you will often need to snip each of the corners, taking care to not snip beyond the end of the 1/2" strip.
8. **Notch markings that are found throughout the pattern.** Some notches indicate where allowances exist, while others will help you line up pieces near side edges.
9. Mark all corner drill holes. Using a pin, bring together both layers of fabric and the pattern, mark the corner of each drill hole with chalk, wax or other removable, non-permanent mark. A chalk mark may also be used. *The corner drill hole, or marking, are indicated in the following symbol.*
10. **OPTIONAL C:** Cut fusible interfacing pieces (see **NOTE C** for more info). Pattern pieces that use fusible will be marked with the direction "Cut 2 Fusible" or "Cut 1 Fusible". These pieces are the Collar, Fly Facing, Front Pocket Facing, and Front Pocket Backing. To cut the fusible, lay the material down with the grain side facing up. Then place your pattern down and cut around the perimeter of each piece and notch.
11. Cut the Front Pocket Bag cover or lighter pocketing material. If you are not using a pocketing material, then the Front Pocket Bag may be cut straight from other pattern pieces. *Padding is used in make back in case of fabric material. It will not fit in or except of padding on any part of the piece.*

NOTE A: FABRIC LESS THAN 34" WIDE

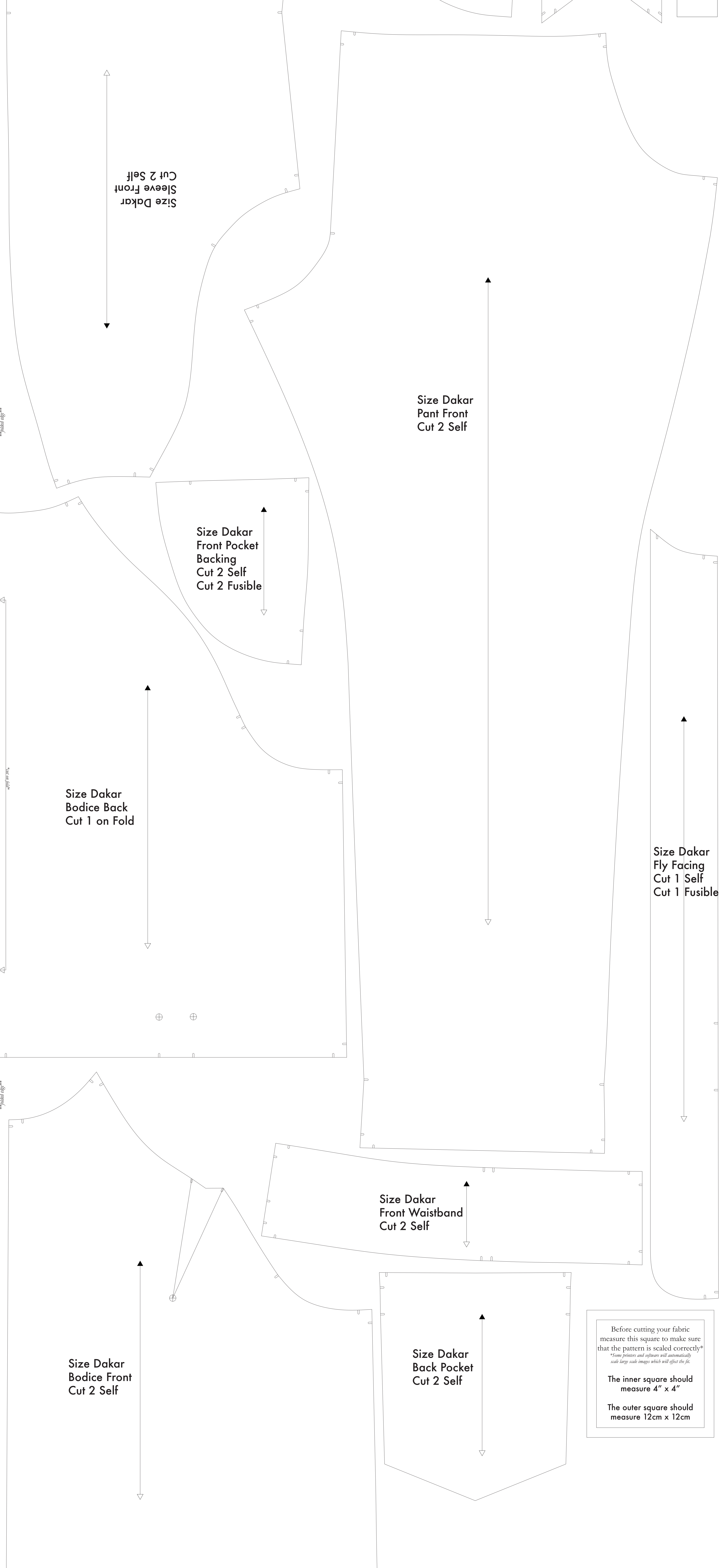
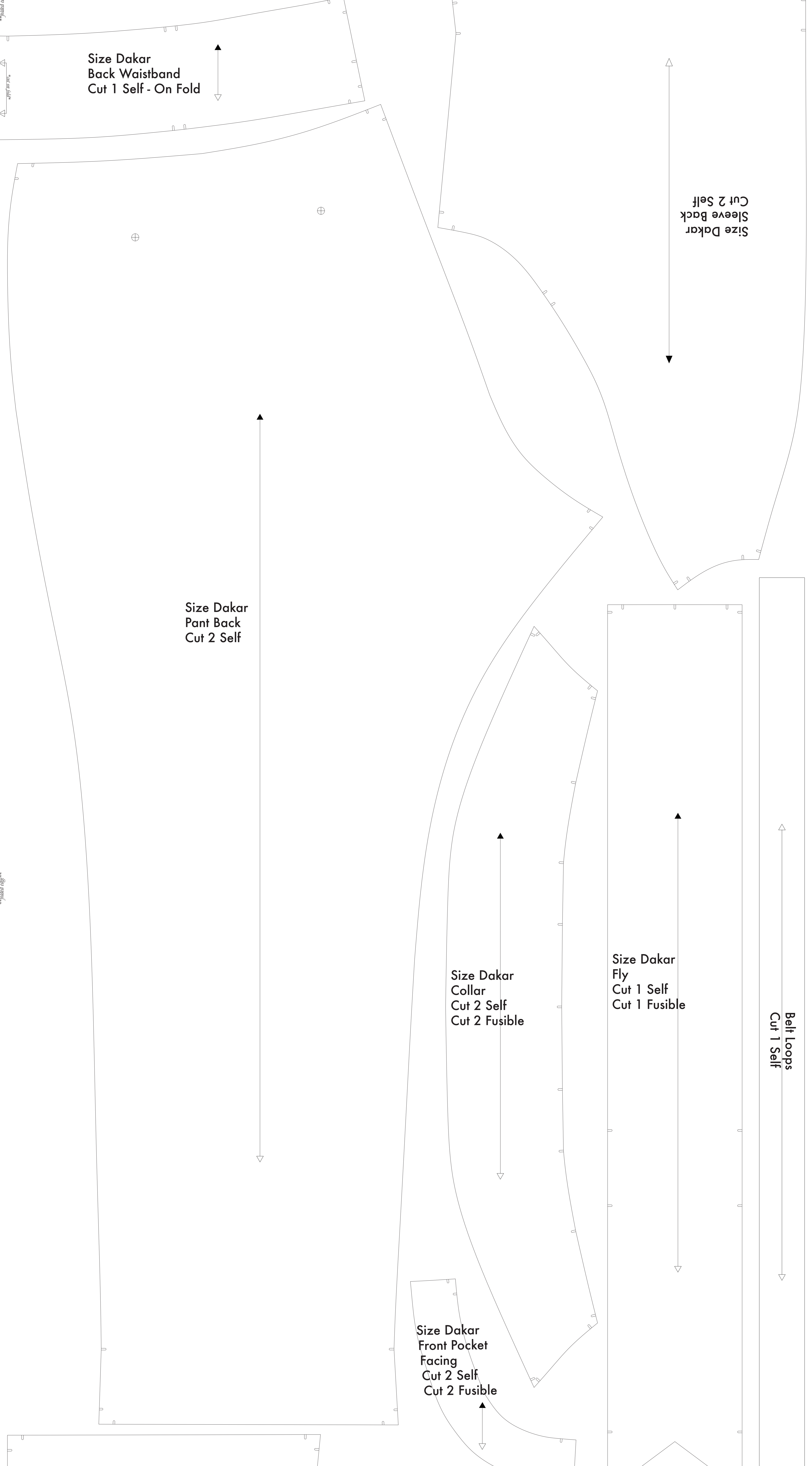
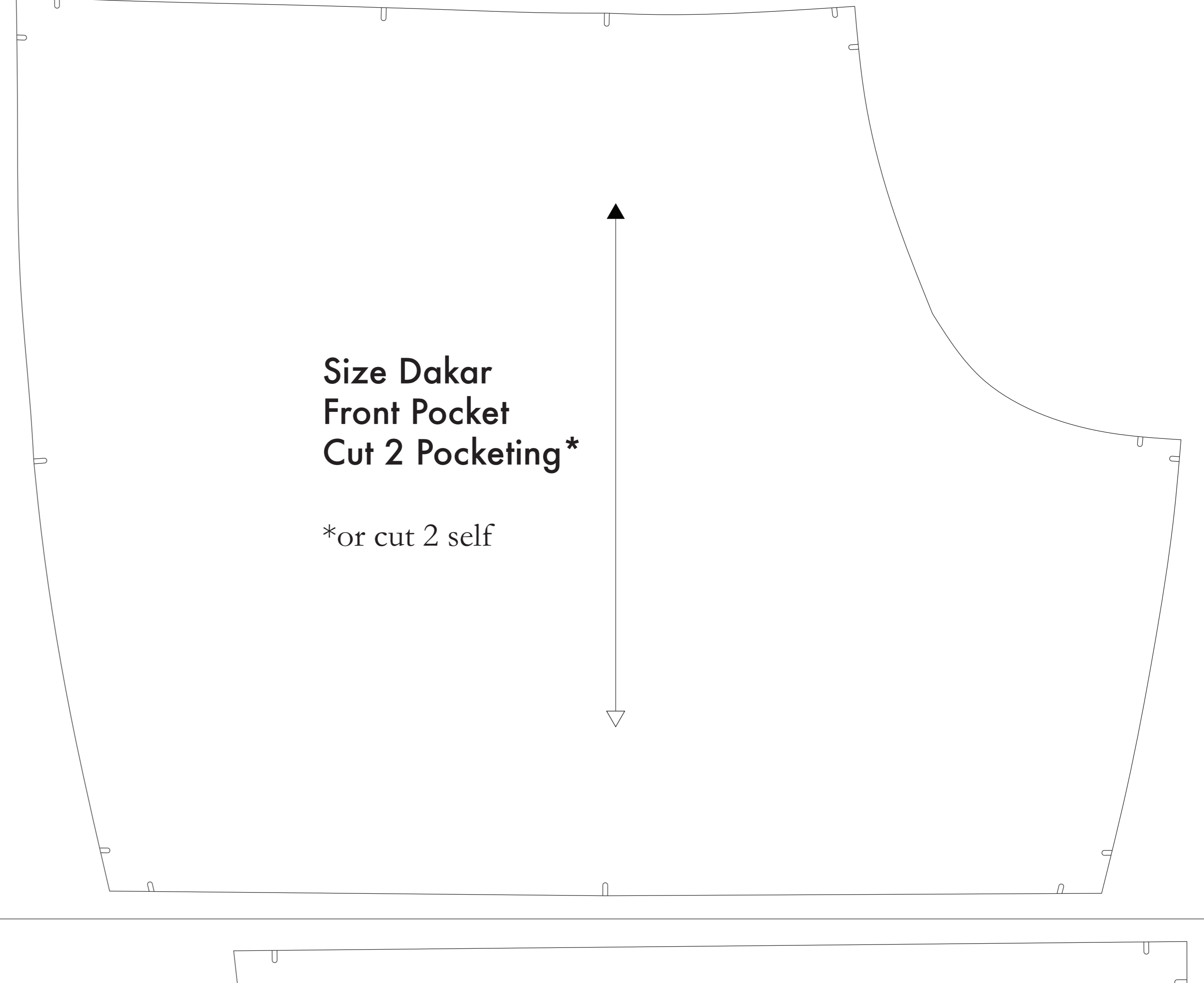
If your fabric is less than 34" wide you will need to cut each pattern piece individually from the paper template and piece together the pieces. Please ensure you are properly marking notches and pocketing on all widths to each pattern piece to cut correctly. To find the grainline, the selvedge edge of the fabric should be used.

NOTE B: FABRIC WITH NAP OR DIRECTIONAL PATTERN

For fabric with a nap, such as velvet or corduroy, place each pattern piece on the fabric with the nap or directional pattern facing up. If you are using a directional pattern, the nap or directional pattern should be facing up. The nap or directional pattern should be facing up. The nap or directional pattern should be facing up.

NOTE C: USING FUSIBLE INTERFACING

Fusible interfacing is a material that is used to stiffen and stabilize fabric. It is used to stiffen and stabilize fabric. It is used to stiffen and stabilize fabric.



Before cutting your fabric measure this square to make sure that the pattern is scaled correctly*

*Some printers and software will occasionally scale large web images which will affect the fit.

The inner square should measure 4" x 4"

The outer square should measure 12cm x 12cm