

- SUPPLIES NEEDED***
- 210" FABRS OF 54" WIDE FABRIC
 - SHARP SCISSORS
 - REMOVABLE MARKING MEDIUM (chalk, wax, tailor's tack, etc.)
 - 1/2" 28" NON SEPARATING ZIPPER
 - TRUSSES
 - SEWING MACHINE
 - FUSIBLE INTERFACING

CUTTING INSTRUCTIONS

- Print pattern. You can print this document on a sheet of standard size paper and tape the pieces together, or print on a wide-format printer (24" or wider). Please always refer to this source for approximately 1:12. If available to you, the BERS recommends wide-format printing.
- Once you print, you should cut along the outermost rectangle to remove any excess paper. This template should fit together on a 34" wide or larger piece of fabric that has been folded in half. If your fabric is less than 34" wide, see **NOTE A**. For measuring and for pieces to be cut, you should have a reference. For fabric with a nap, such as velvet or corduroy or fabric with a clear directional grain, see **NOTE B**.
- Fold your fabric in half vertically, grain matching whichever edge is the outer edge. Sub-fold in the self-fabric edge of fabric. This reverse folds the fabric from wrong to right. Often it has an edge that resembles any fringe, though not as frequently, a clean finish that will be used. Fold the edge as you cut marked "foldable edge".
- Place the paper template on top of your fabric, matching the foldable edge of the fabric with the side of the paper marked "foldable edge".
- Place pins throughout the template pinning together both layers of fabric as well as the paper.
- Cut around the perimeter of each piece.
- Leaving the piece in place, you will need to strip each of the notches, taking care to not strip them beyond the end of the fabric.

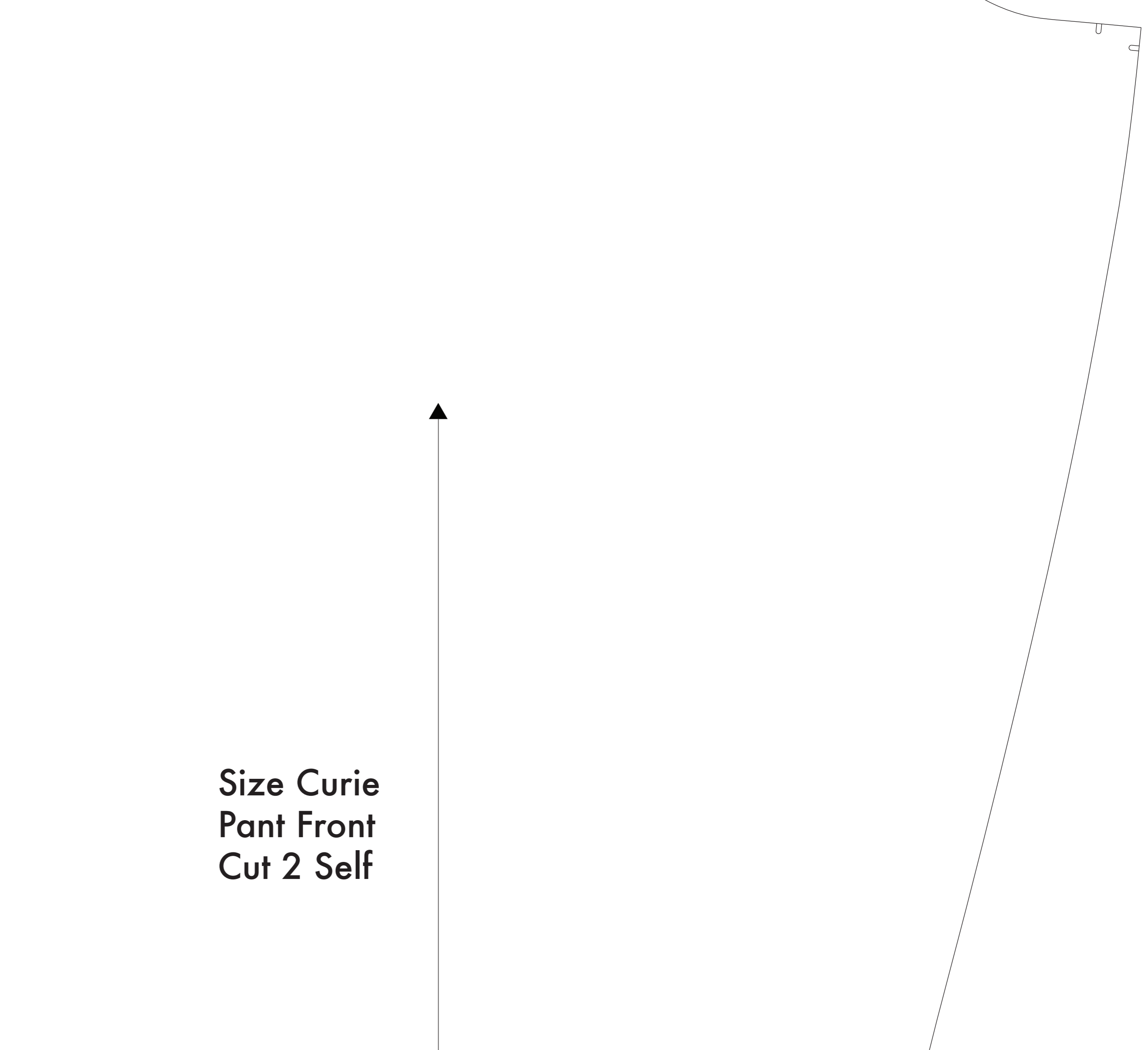
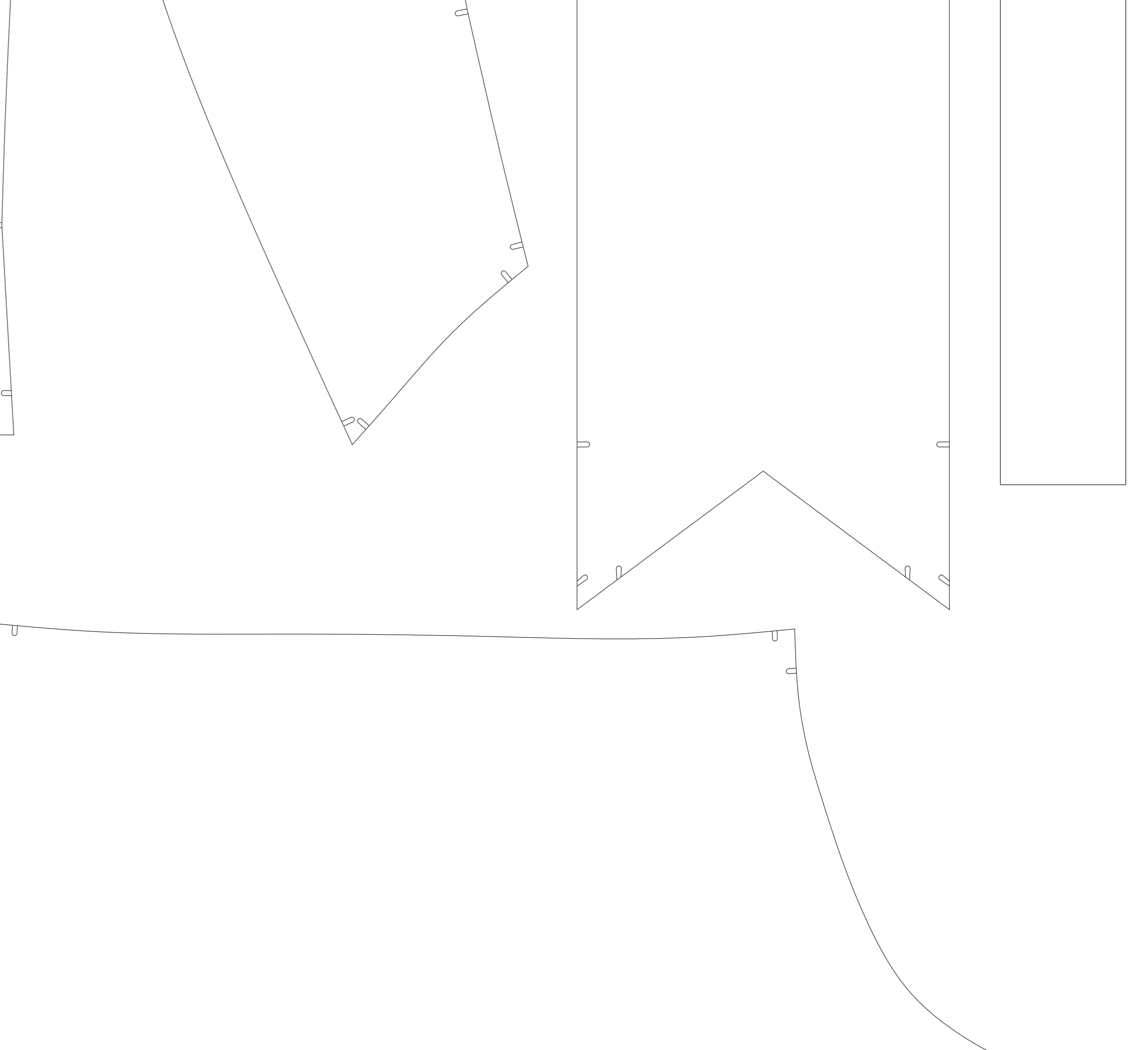
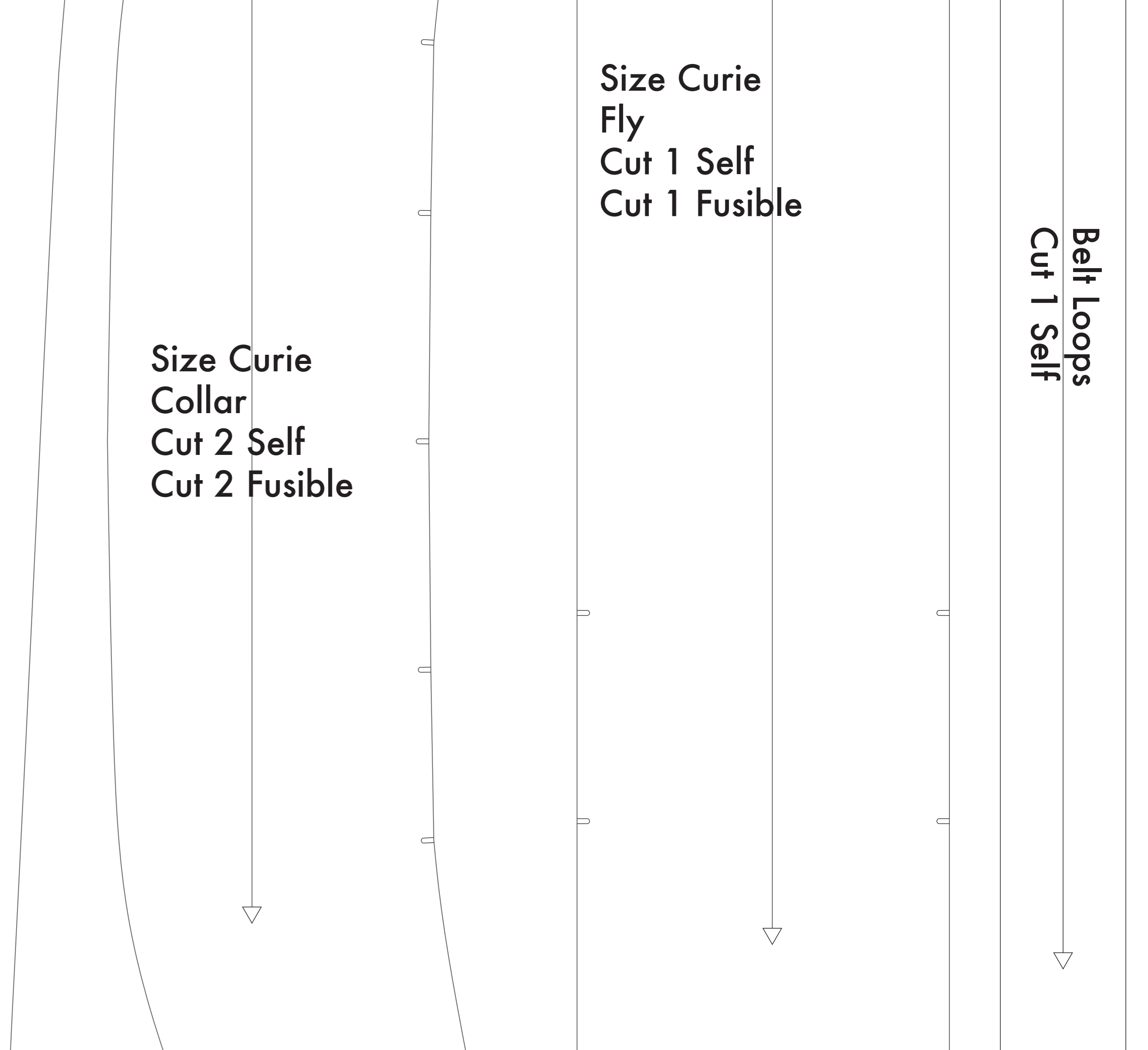
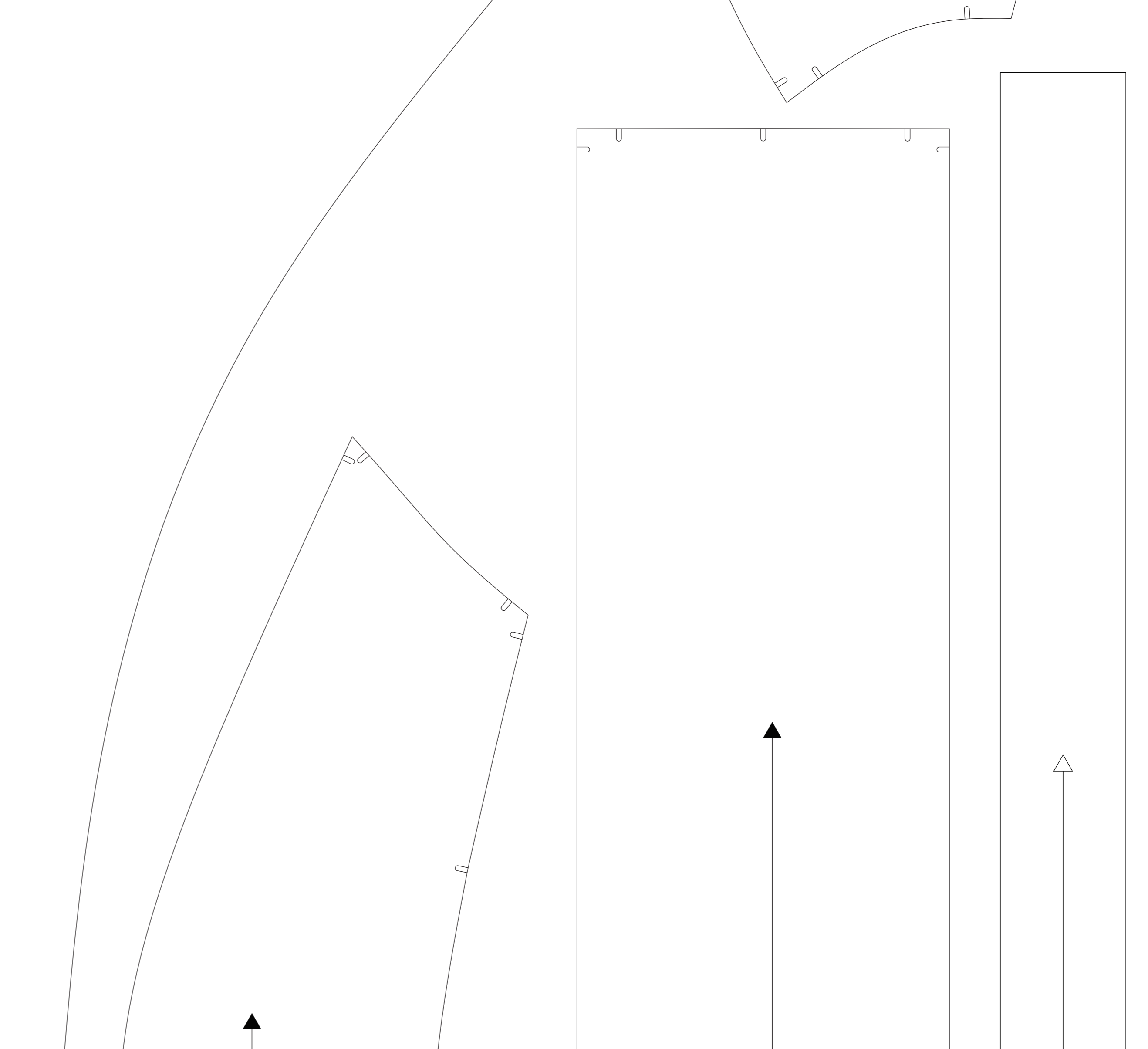
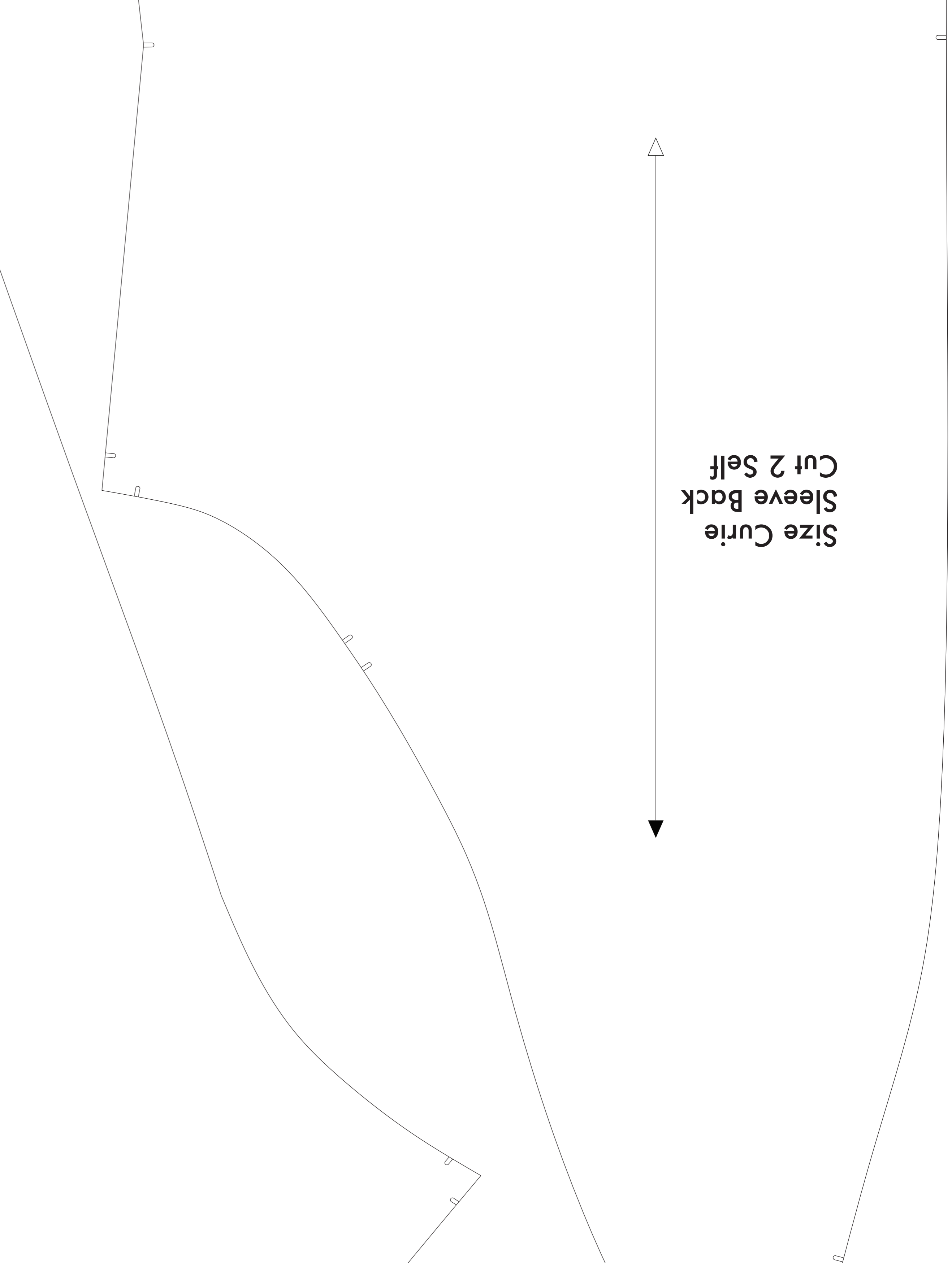
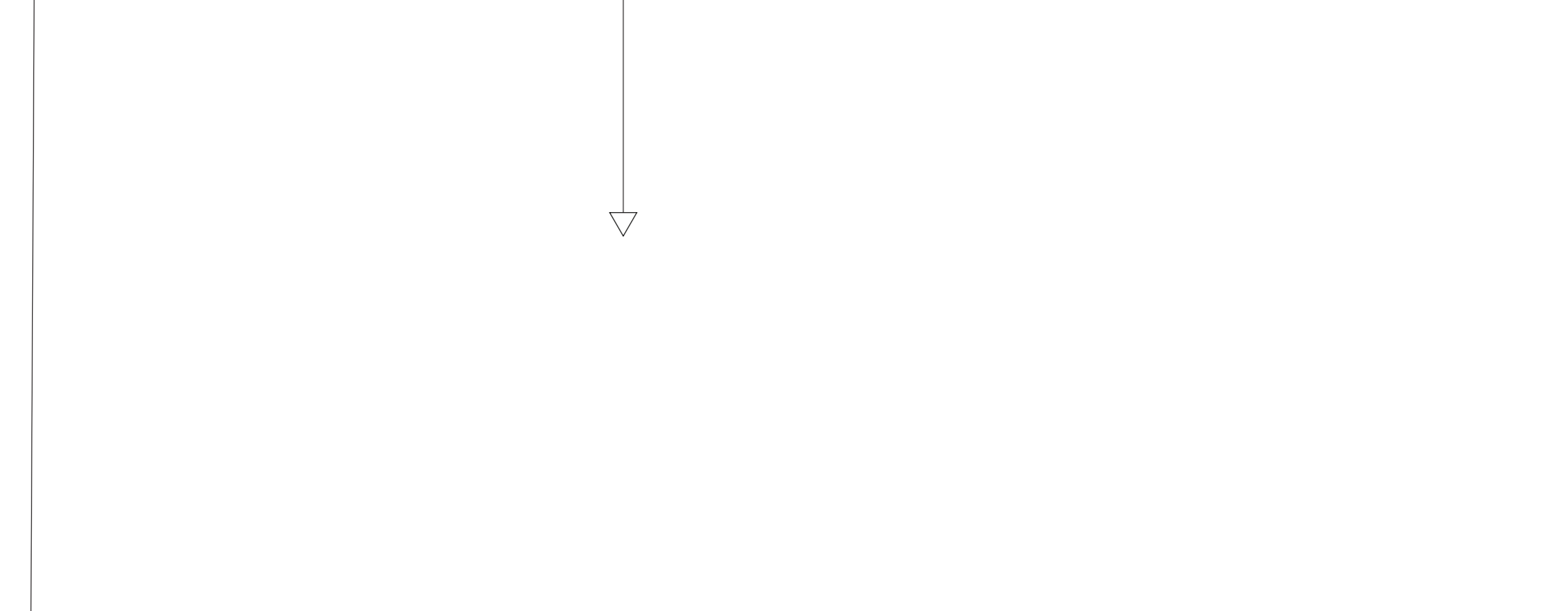
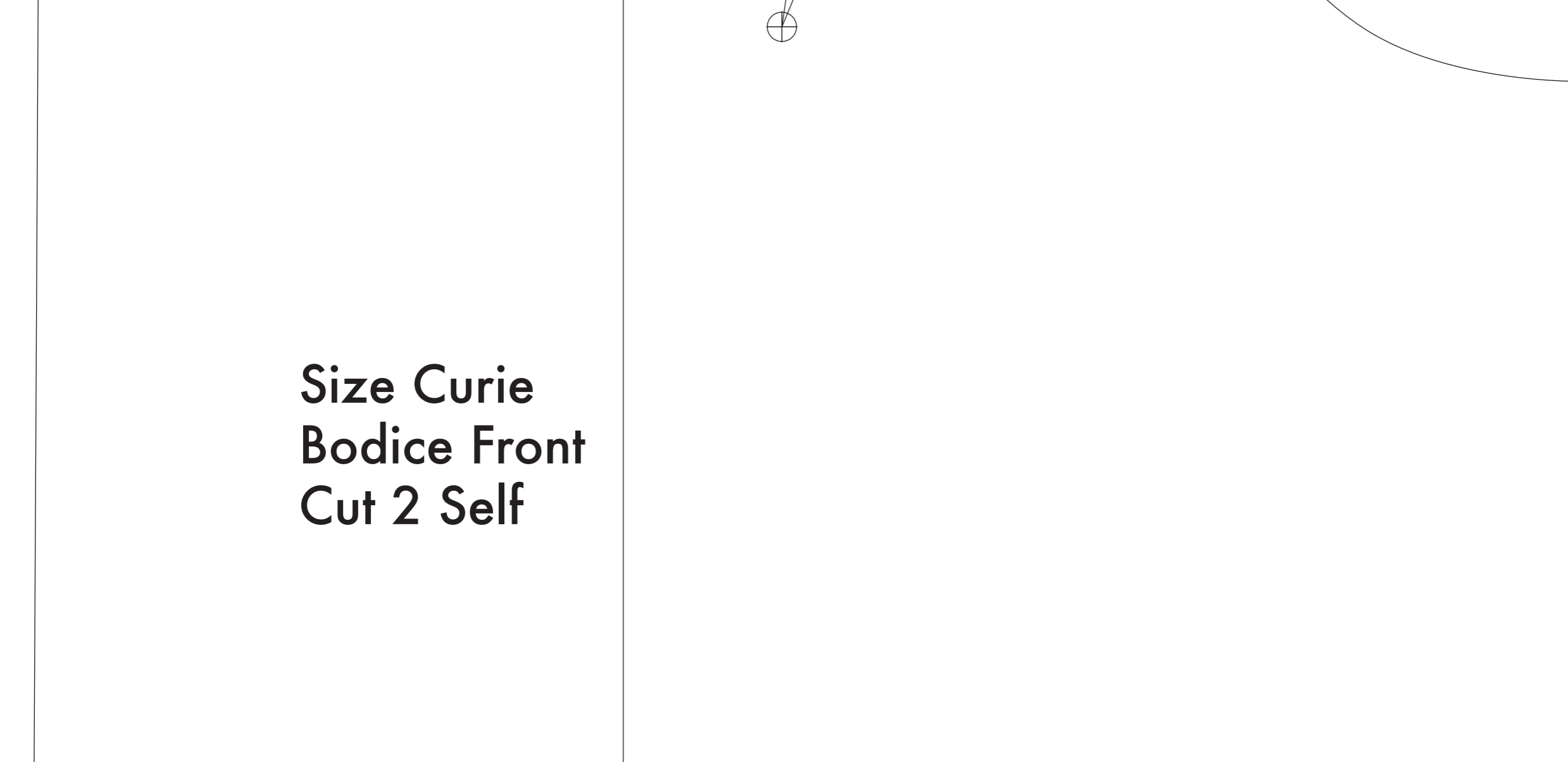
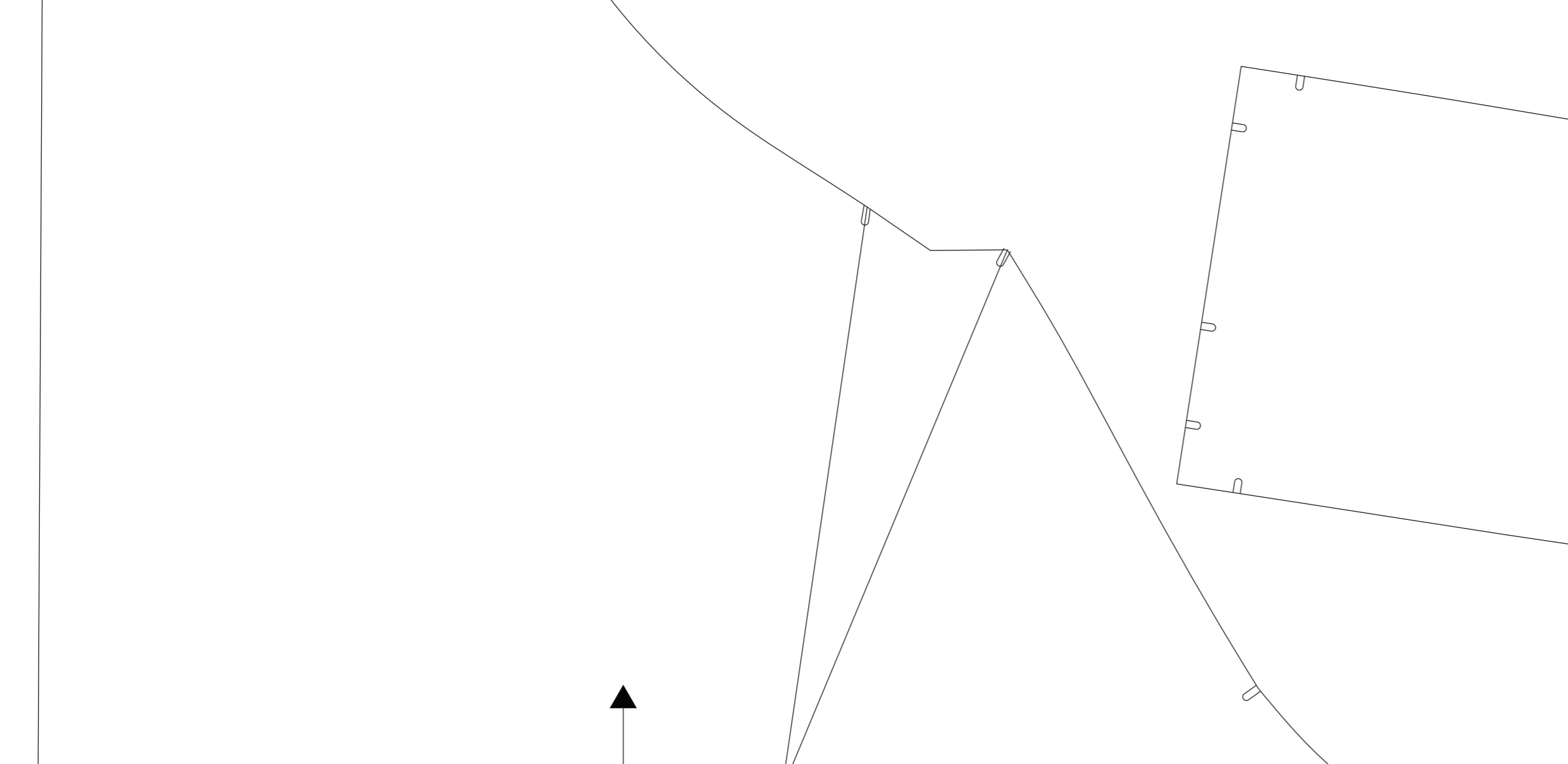
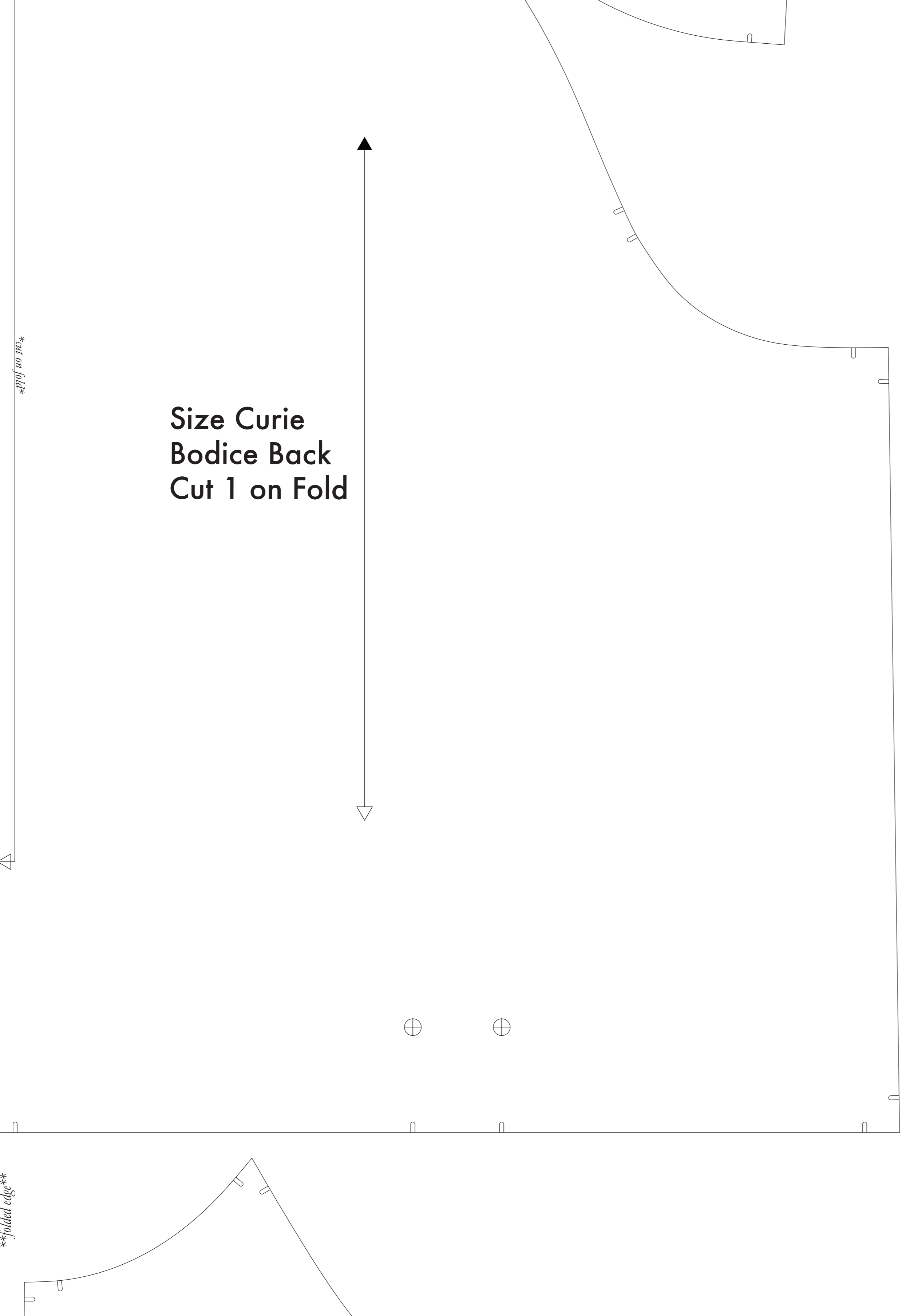
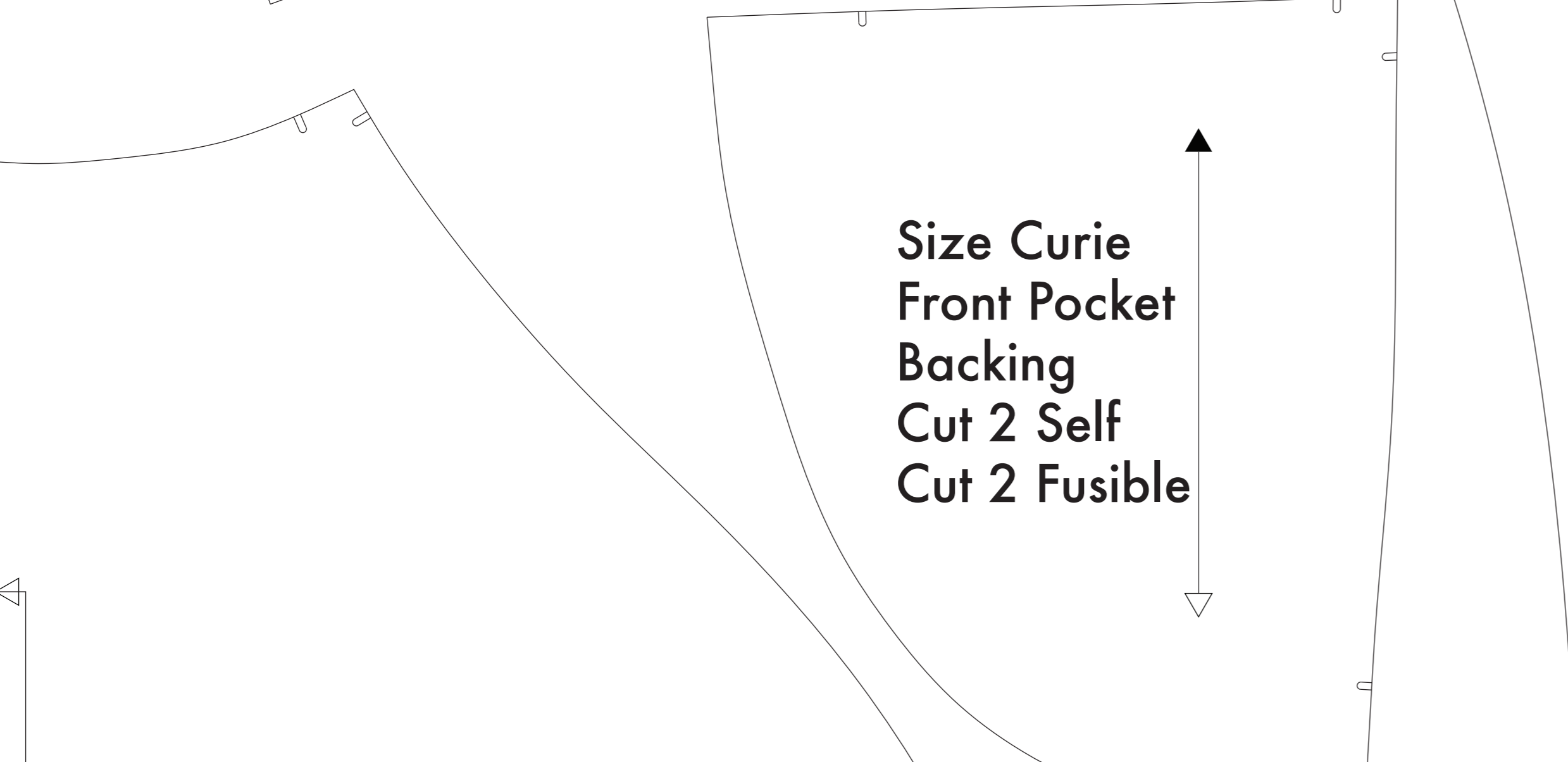
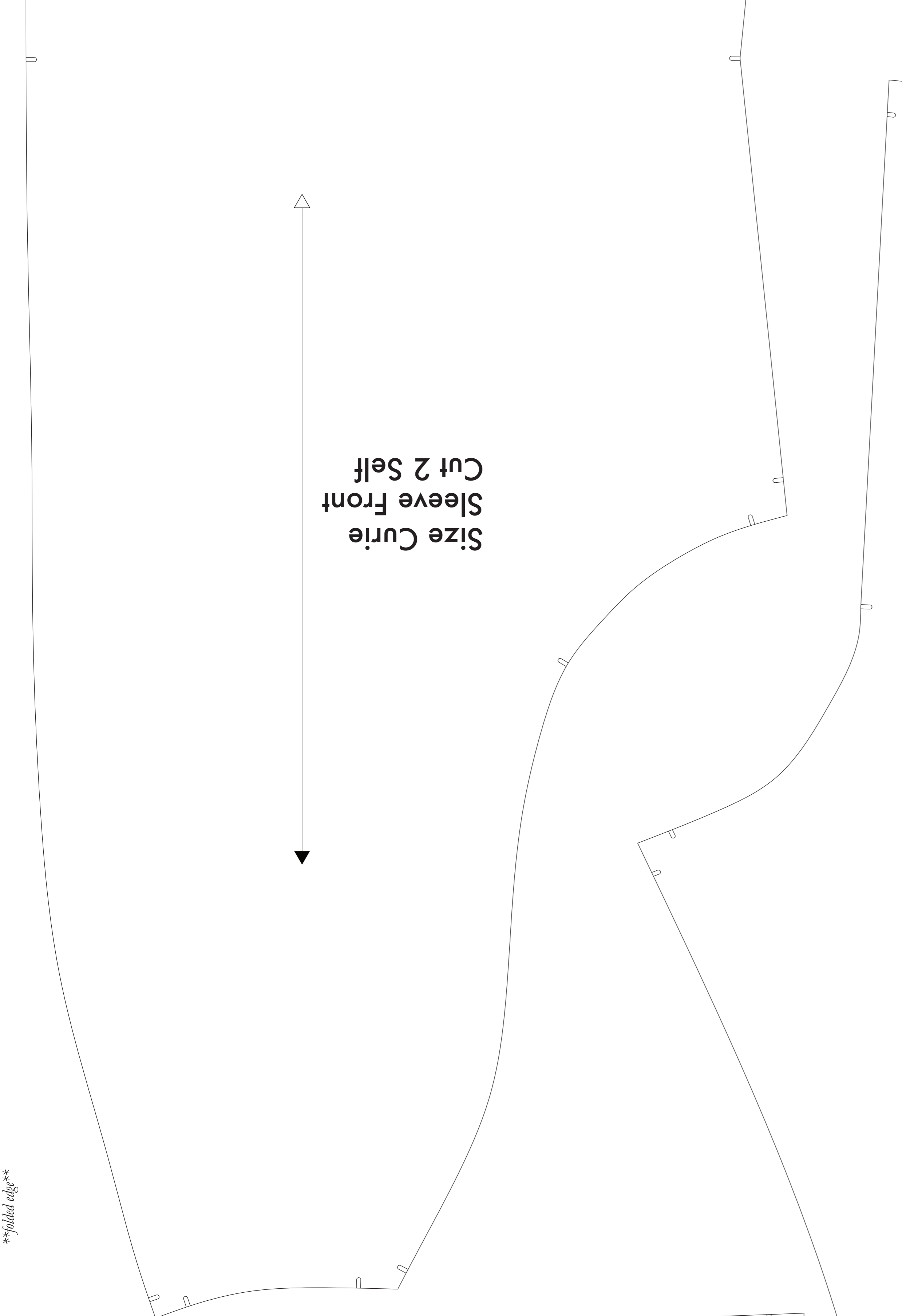
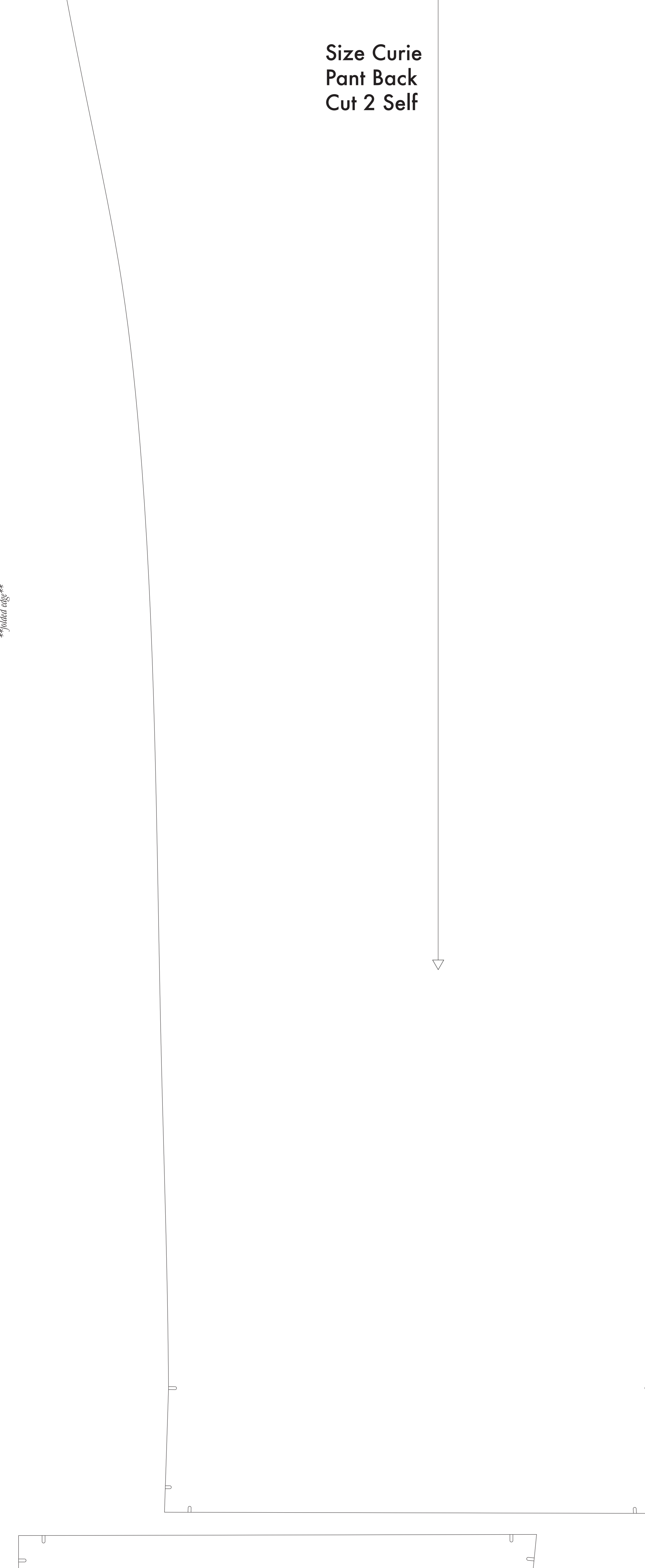
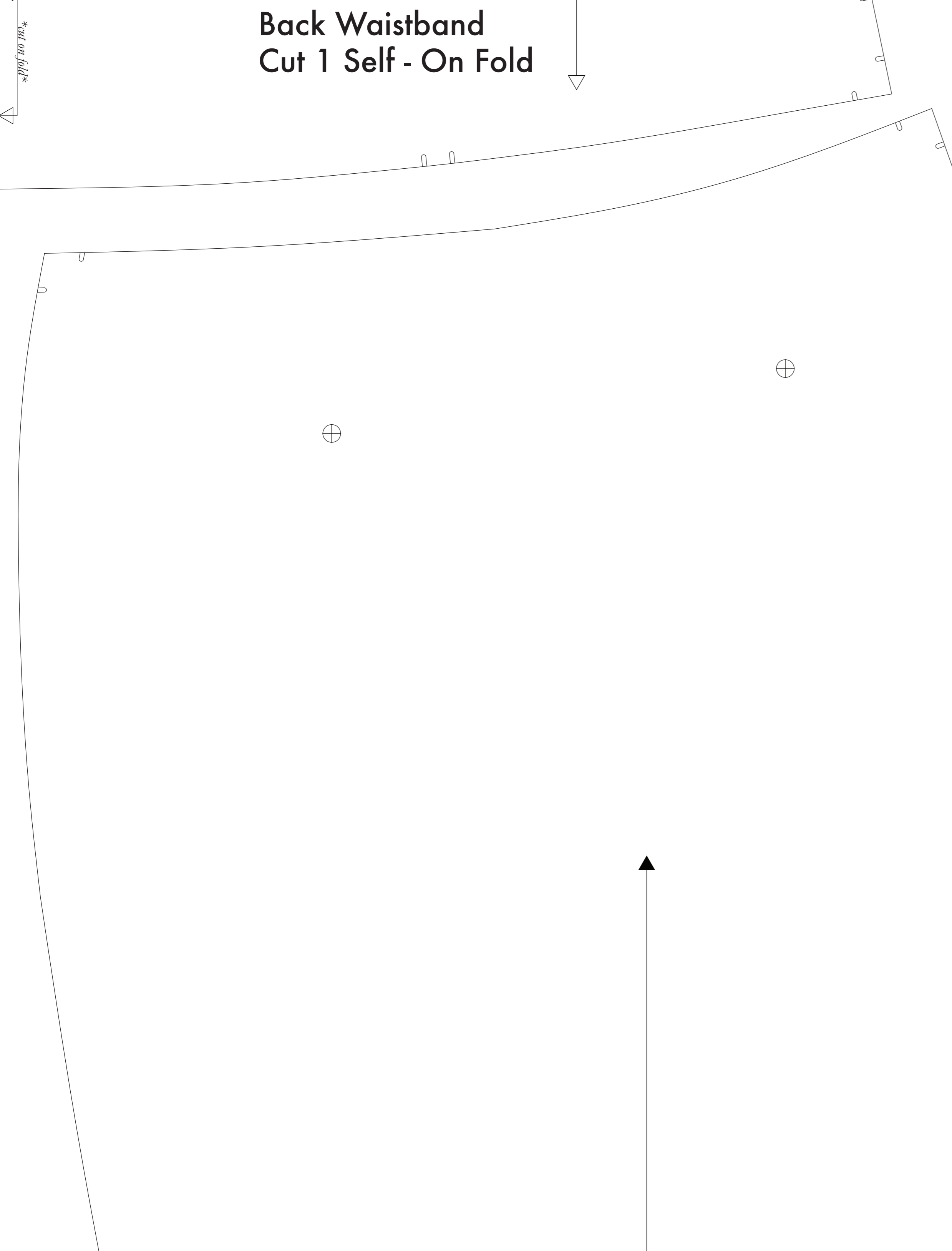
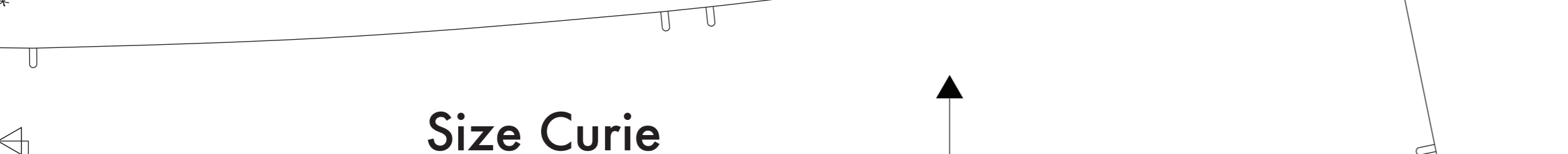
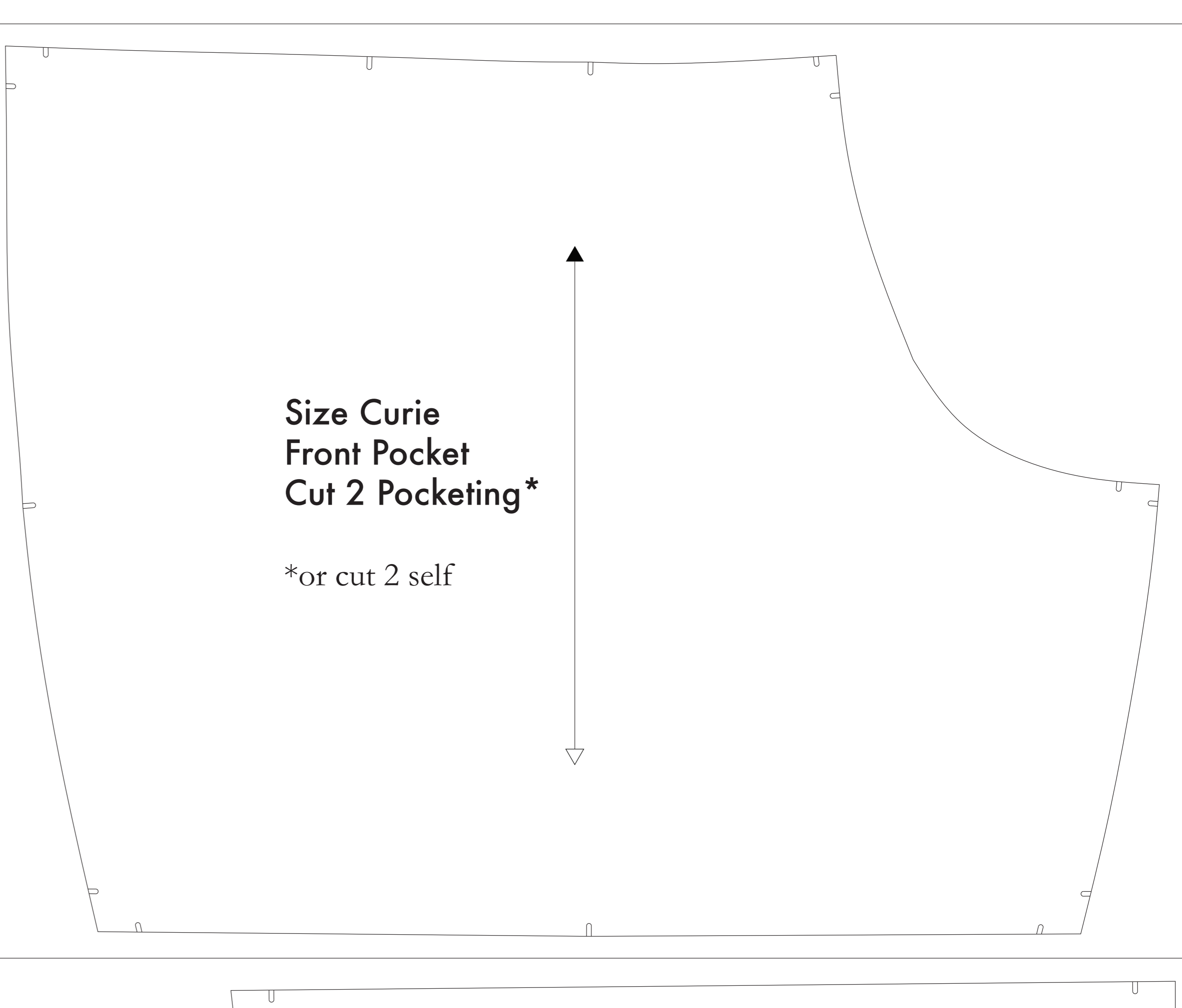
- Notches are the "V" shaped markings that are found throughout the pattern. They indicate where to trim the fabric to allow the pieces to fit together properly. They are not to be cut out.
- Mark all notches with chalk, wax, or other removable, non-permanent tool. A tailor's tack may also be used.
- Notches are the "V" shaped markings that are found throughout the pattern. They indicate where to trim the fabric to allow the pieces to fit together properly. They are not to be cut out.
- Notches are the "V" shaped markings that are found throughout the pattern. They indicate where to trim the fabric to allow the pieces to fit together properly. They are not to be cut out.

- OPTIONAL: Use fusible interfacing pieces (see **NOTE C** for more info). Pattern pieces that use fusible will be marked with the direction "Cut 2 Fusible" or "Cut 1 Fusible". These pieces are: the Collar (Fly Fly Facing, Front Pocket Facing, and Front Pocket Backing). To use the fusible, lay the material down with the glue side facing up. Place the paper pattern down and cut around the perimeter of each piece and notch.
- Use the Front Pocket Bag cut of a lighter packaging material. If you are using a packaging material, then the Front Pocket Bag may be cut alongside your other pattern pieces. Packaging is not to be made back in case of fabric material. You will find an example of packaging on any pair of fabric pieces.

NOTE A: FABRIC LESS THAN 34" WIDE
 If your fabric is less than 34" wide, you will need to use a wide-format printer (24" or wider). Please always refer to this source for approximately 1:12. If available to you, the BERS recommends wide-format printing.

NOTE B: FABRIC WITH NAP OR DIRECTIONAL PATTERN
 For fabric with a nap, such as velvet or corduroy, fabric with a clear directional grain, or fabric with a directional pattern, you should have a reference. For fabric with a nap, such as velvet or corduroy or fabric with a clear directional grain, see **NOTE B**.

NOTE C: USING FUSIBLE INTERFACING
 Fusible interfacing is a material that is used to stiffen, stabilize, and protect pattern pieces in garments. With the use of fusible interfacing in pattern, the finished garment will be more durable and hold its shape longer.



Before cutting your fabric measure this square to make sure that the pattern is scaled correctly*

*Some printers and software will automatically scale large image which will affect the fit.

The inner square should measure 4" x 4"

The outer square should measure 12cm x 12cm