

- SUPPLIES NEEDED**
- 3' FABRIC OF 54" WIDE FABRIC
  - SHARP SCISSORS
  - REMOVABLE MARKING MEDIUM (chalk, wax, tailor's rock, etc.)
  - 1 - 24" NON-SEPARATING ZIPPER
  - THREAD
  - SEWING MACHINE
- OPTIONAL:**
- 1/2 YARD OF THINNER POCKET FABRIC
  - FUSIBLE INTERFACING

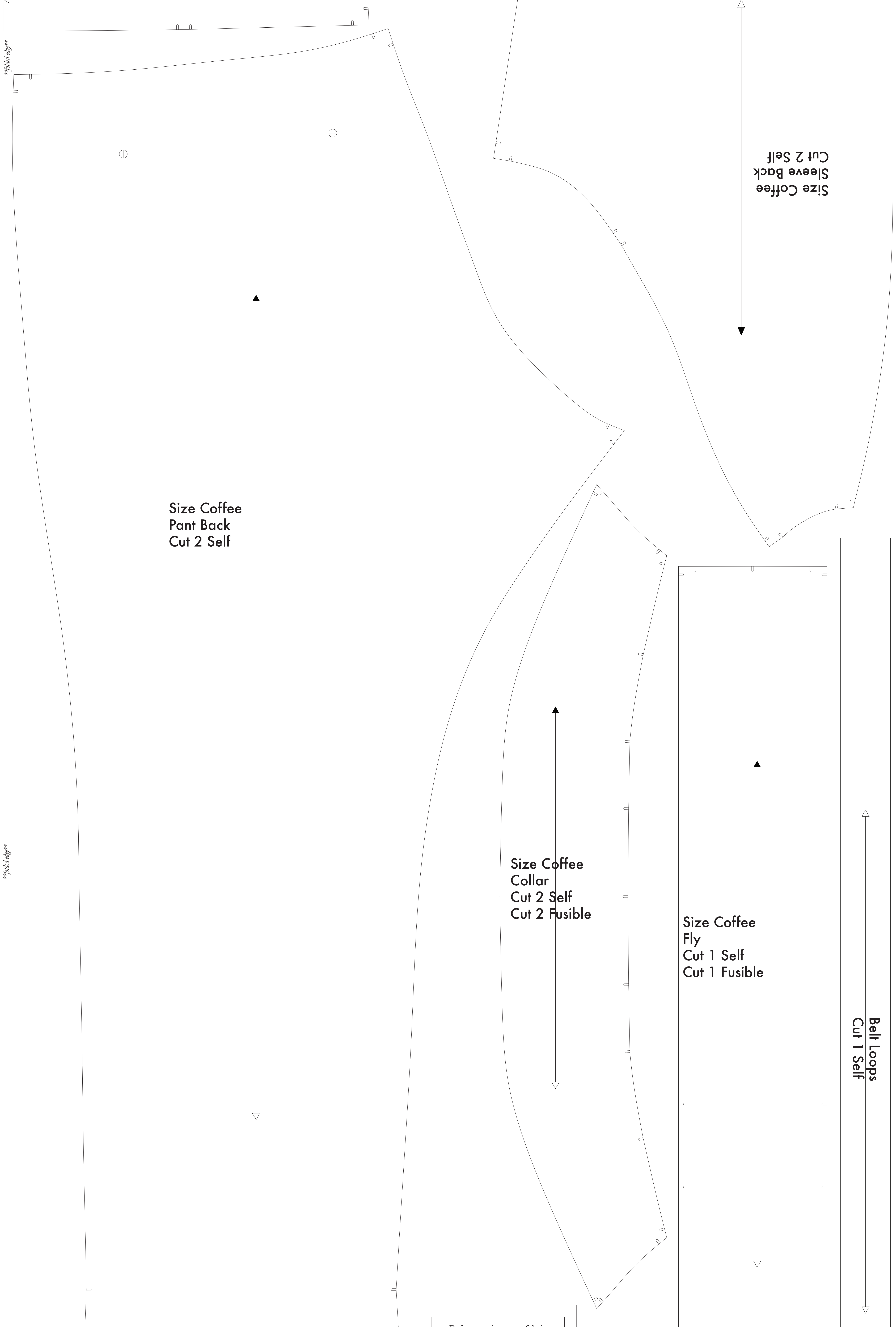
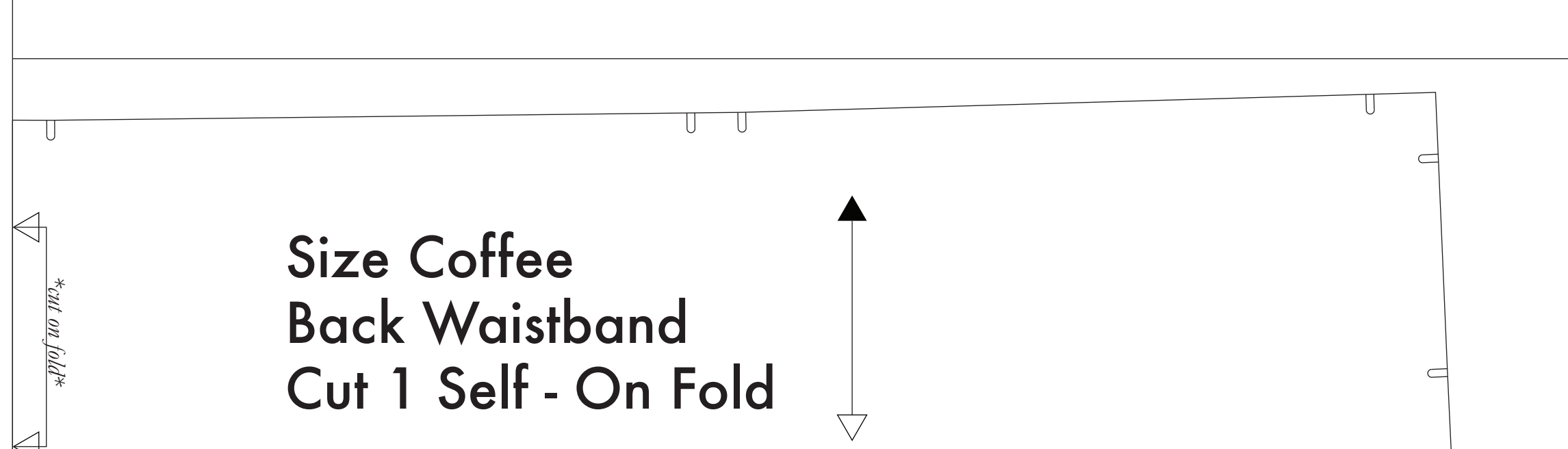
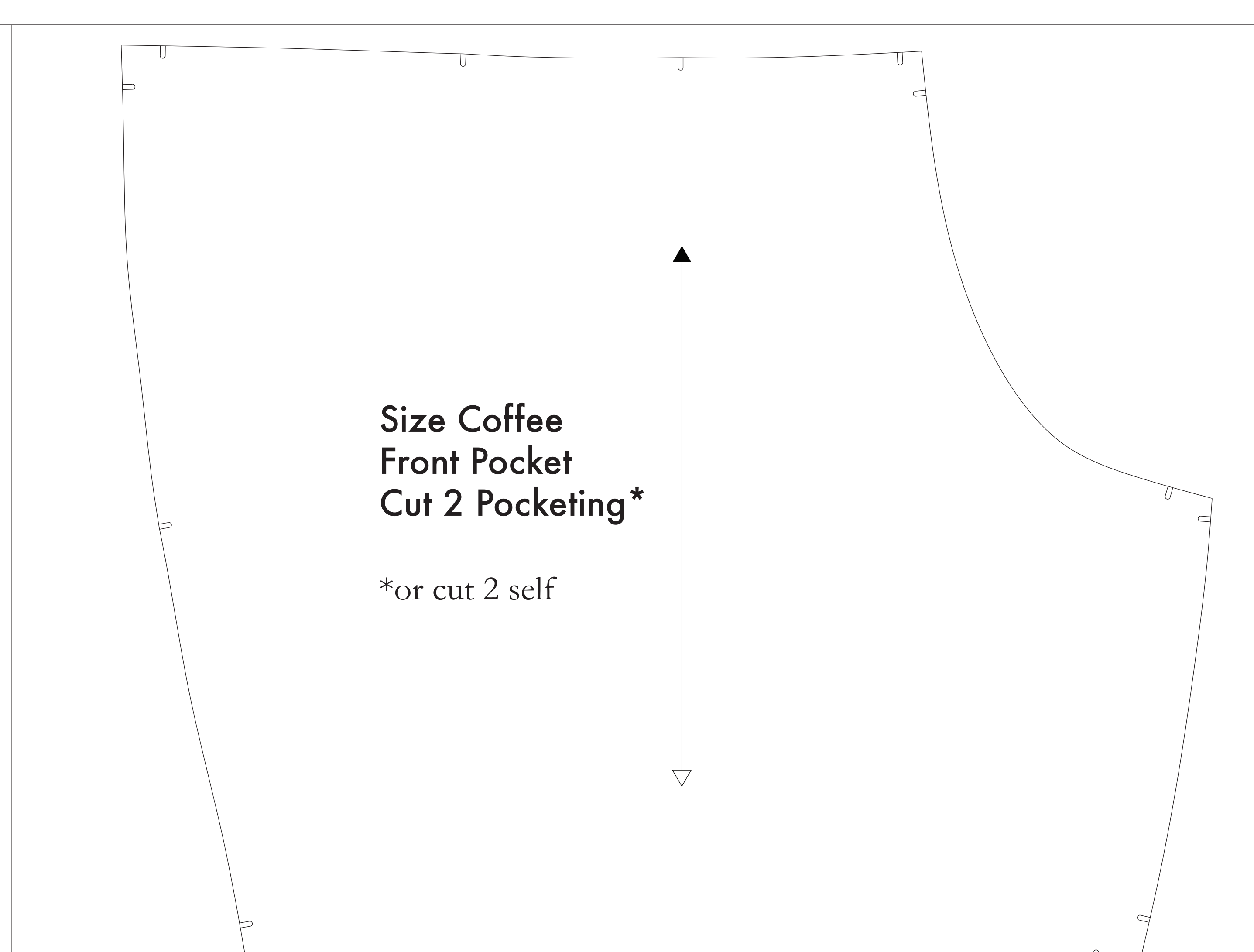
- CUTTING INSTRUCTIONS**
1. These pieces are cut from one sheet of standard size paper and taped together, or print on a wide-format printer (36" or wider). Print sheets offer this service for approximately \$12. If available to you, the B&B recommends wide-format printing.
  2. Once your pattern is printed, cut along the measurement rectangle to remove any excess paper. This template should fit exactly on a 54" wide or larger piece of fabric that has been folded in half. If your fabric is less than 54" wide, see **NOTE A**. For maximum detail this pattern is laid out for fabric that doesn't have a direction. For fabric with a nap, such as velvet or chenille, or fabric with a clear directional grain, see **NOTE B**.
  3. Fold your fabric in half along the lengthwise grain matching selvage edge to selvage edge. Selvage is the self-finished edge of fabric. This service marker keeps the fabric from stretching or fraying. There is a line on edge that smooths any frays, though not as frequently, a hand finished line will be found. Around this edge in your cut pieces as the seam frequently differs from the main body of the fabric.
  4. Place the paper template on top your fabric, matching the folded edge of the fabric with the side of the paper marked "folded edge".
  5. Place pins throughout the template pinning together both layers of fabric as well as the paper.
  6. Cut around the perimeter of each piece.
  7. Leaving the pins in place, you will next need to snip each of the noches, taking care to not snip beyond the end of the "ditch".
  8. *Notches are the 1/2" depth markings that are found throughout the pattern.*  
Some noches indicate seam allowances, while others will help you do your pattern piece with ease.
  9. Mark all noches with chalk, using pins, being together both layers of fabric and the pattern, mark the center of each ditch back with chalk, wax or other removable, non-permanent tool. A tailor's tack may also be used. The noches will be, or markings, are indicated by the following symbol:  
*They will be found on the Back, Back, Back, Back, and your pattern.*
  10. **OPTIONALS:** (1) Use fusible interfacing pieces (see **NOTE C** for more info). Pattern pieces that use fusible will be identified with the direction "Cut 2 Fusible" or "Cut 1 Fusible". These pieces are the Collar, Fly, the Front, Front Pocket Facing, and Front Pocket Backing. To cut the fusible, lay the material down with the glue side facing up. Then the Front Pocket Bag cut out alongside your other pattern pieces. *Marking is not an end goal in case of thicker materials - You will find an example of marking on one part of the page.*

**NOTE A: FABRIC LESS THAN 54" WIDE**  
If your fabric is less than 54" wide you will need to cut each pattern piece individually from the paper template and piece it together on your fabric using your seam allowance and press it together on your fabric using your seam allowance and press it together on your fabric using your seam allowance.

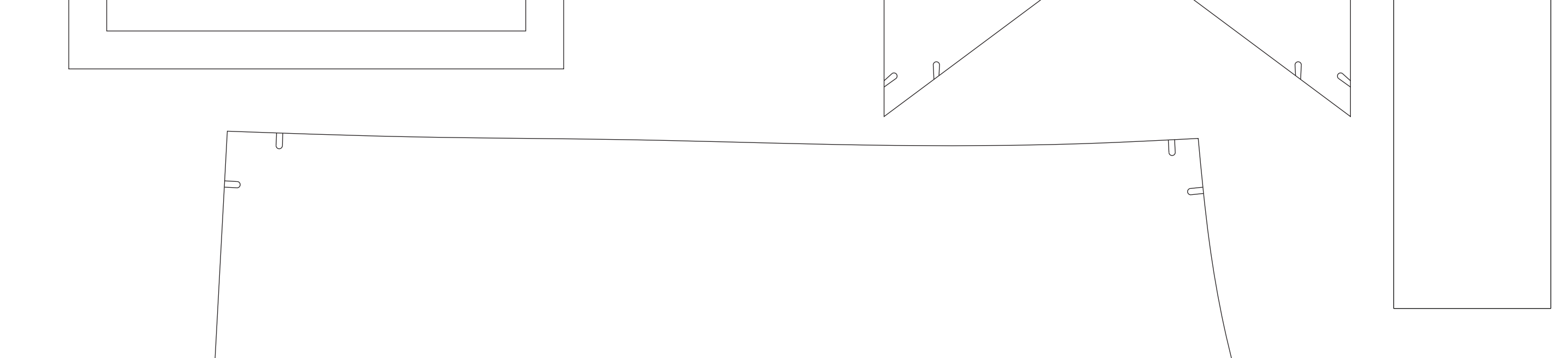
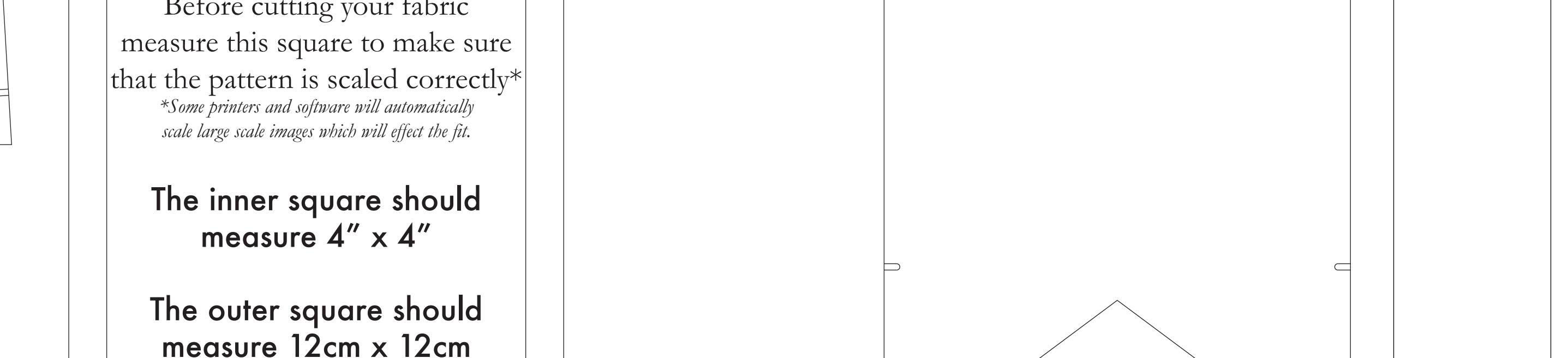
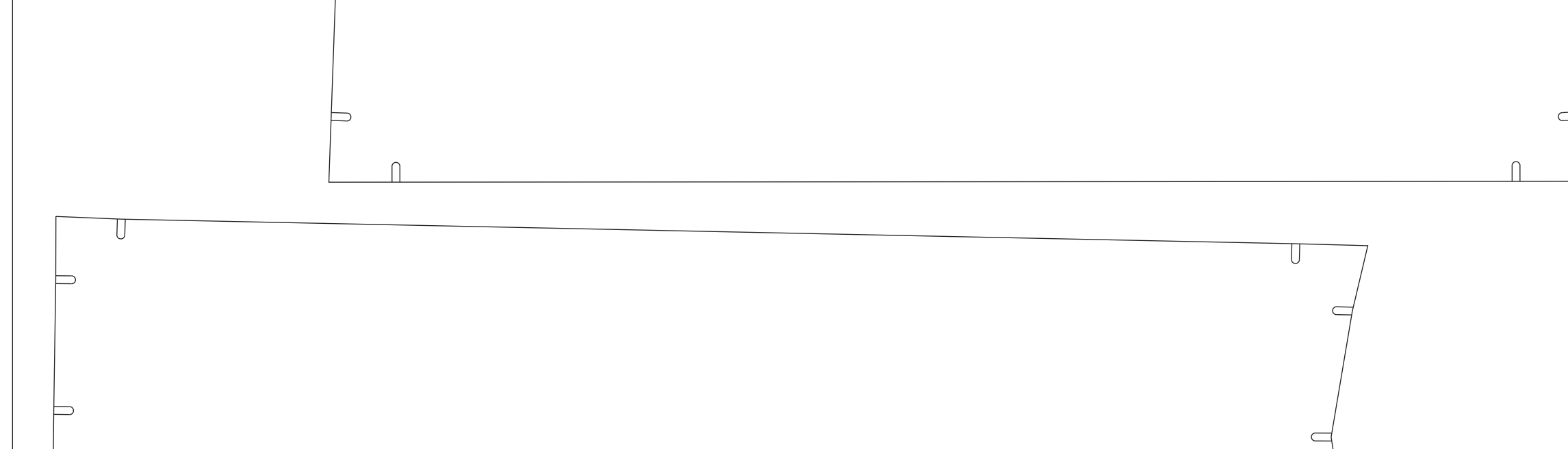
**NOTE B: LONG POCKET INTERFACING**  
Fusible interfacing is optional that is used to reinforce, strengthen, and stabilize certain pieces in a garment. While the use of fusible interfacing is optional, the pattern does have an example of how to use it. See **NOTE C** for more info.

**NOTE C: FUSIBLE INTERFACING**  
Fusible interfacing is optional that is used to reinforce, strengthen, and stabilize certain pieces in a garment. While the use of fusible interfacing is optional, the pattern does have an example of how to use it. See **NOTE C** for more info.

**NOTE D: FABRIC WITH NAP OR DIRECTIONAL PATTERN**  
For fabric with a nap, such as velvet or chenille, fabric with a directional grain, or fabric with a directional pattern, such as silk or wool, you will need to cut each pattern piece individually from the paper template and piece it together on your fabric using your seam allowance and press it together on your fabric using your seam allowance.



Before cutting your fabric measure this square to make sure that the pattern is scaled correctly\*  
\*Your printer and software will automatically scale large scale images which will affect the fit.  
The inner square should measure 4" x 4"  
The outer square should measure 12cm x 12cm



Belt Loops Cut 1 Self

