


- SUPPLIES NEEDED**
- 3/4" YARDS OF 54" WIDE FABRIC
  - 1/2" NON-SEPARATING ZIPPER
  - REMOVABLE MARKING MEDIUM (chalk, wax, tailor's tack, etc.)
  - 1/4" NON-SEPARATING ZIPPER
  - THREAD
  - SEWING MACHINE
- OPTIONAL:
- 1/2" YARD OF THINNER POCKET FABRIC
  - FUSIBLE INTERFACING

**CUTTING INSTRUCTIONS**

- Print pattern: You can print this document (and an sheets of standard size paper and tape the pieces together, or print on a wide-format printer 24" or wider). Piece sheets offer this service for approximately \$12. If available to you, the \$12 service is recommended.
- Check your pattern is printed, cut along the outermost rectangle to remove any excess paper. This template should fit correctly on a 36" wide or larger piece of fabric that has been folded in half. If your fabric is less than 36" wide, you will need to print the pattern on two sheets of paper and tape them together. For fabric with a nap, such as velvet or tulle, you will need to print the pattern on two sheets of paper and tape them together. For fabric with a nap, such as velvet or tulle, you will need to print the pattern on two sheets of paper and tape them together.
- Fold your fabric in half along the lengthwise grain matching selvedge edge to selvedge edge. Selvedge is the self-finished edge of fabric. The selvedge keeps the fabric from unraveling or fraying. There is no selvedge on the outside edge of fabric. The selvedge keeps the fabric from unraveling or fraying. There is no selvedge on the outside edge of fabric. The selvedge keeps the fabric from unraveling or fraying. There is no selvedge on the outside edge of fabric.
- Place the paper template on top of your fabric, matching the folded edge of the fabric with the side of the paper marked "folded edge".
- Place pins throughout the template pinning together both layers of fabric as well as the paper.
- Cut around the perimeter of each piece.
- Leaving the pins in place, you will next need to step each of the notches, taking care to not step beyond the end of the 1/4" shape.
- Notches are 1/4" shaped markings that are used throughout the pattern. Some notches indicate seam allowances, while other notches are used to indicate where to place the zipper.
- Mark all notches with chalk, wax, or other removable, permanent tool. A tailor's tack may also be used.
- The center fold line, or selvedge, are marked by the following symbol: 
- OPTIONAL: Use fusible interfacing pieces. See NOTE C for more info. Pattern pieces that use fusible will be marked with the direction "Cut 2 Fusible" or "Cut 1 Fusible". These pieces are the Collar, Fly, Fly Facing, Front Pocket Facing, and Front Pocket Backing. To use the fusible, lay the material down with the grain side facing up. Then place your pattern down and cut around the perimeter of each piece and notch.
- Use the Front Pocket Bag with or without pocketing material. If you are using pocketing material, then the Front Pocket Bag may be cut straight from other pattern pieces. Pulling it out is easier both in case of a fabric mistake - you will find an example of pocketing on any page of the pattern.

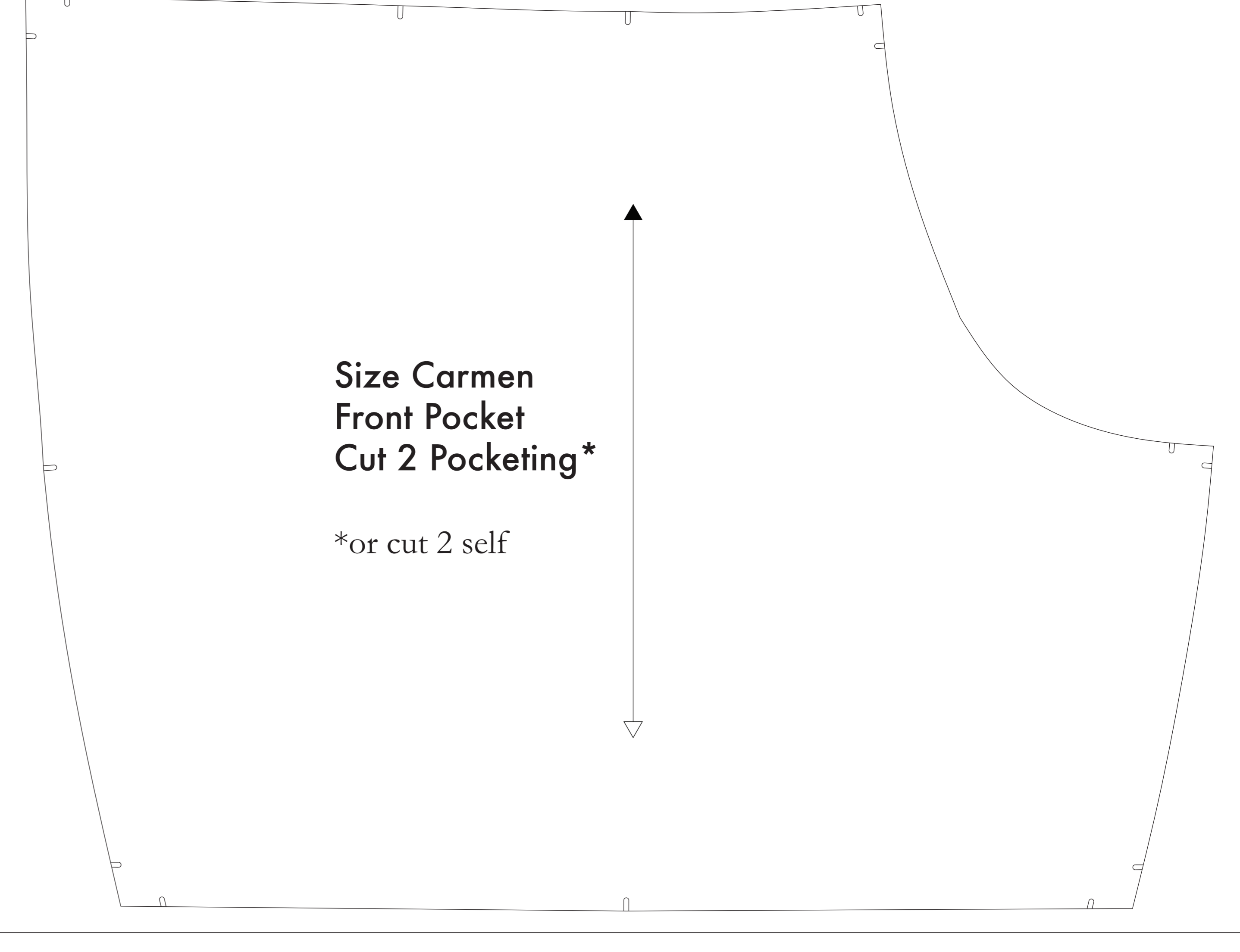
**NOTE A: FABRIC LESS THAN 36" WIDE**  
If you have a fabric that is less than 36" wide, you will need to print the pattern pieces on two sheets of paper and tape them together. For fabric with a nap, such as velvet or tulle, you will need to print the pattern on two sheets of paper and tape them together. For fabric with a nap, such as velvet or tulle, you will need to print the pattern on two sheets of paper and tape them together.

**NOTE B: FABRIC WITH NAP OR ON-DIRECTIONAL PATTERN**  
Cut fabric with a nap or on-directional pattern with a clear directional grain, or for marking steps, such as a pocket bag, or for marking steps, such as a pocket bag, or for marking steps, such as a pocket bag.

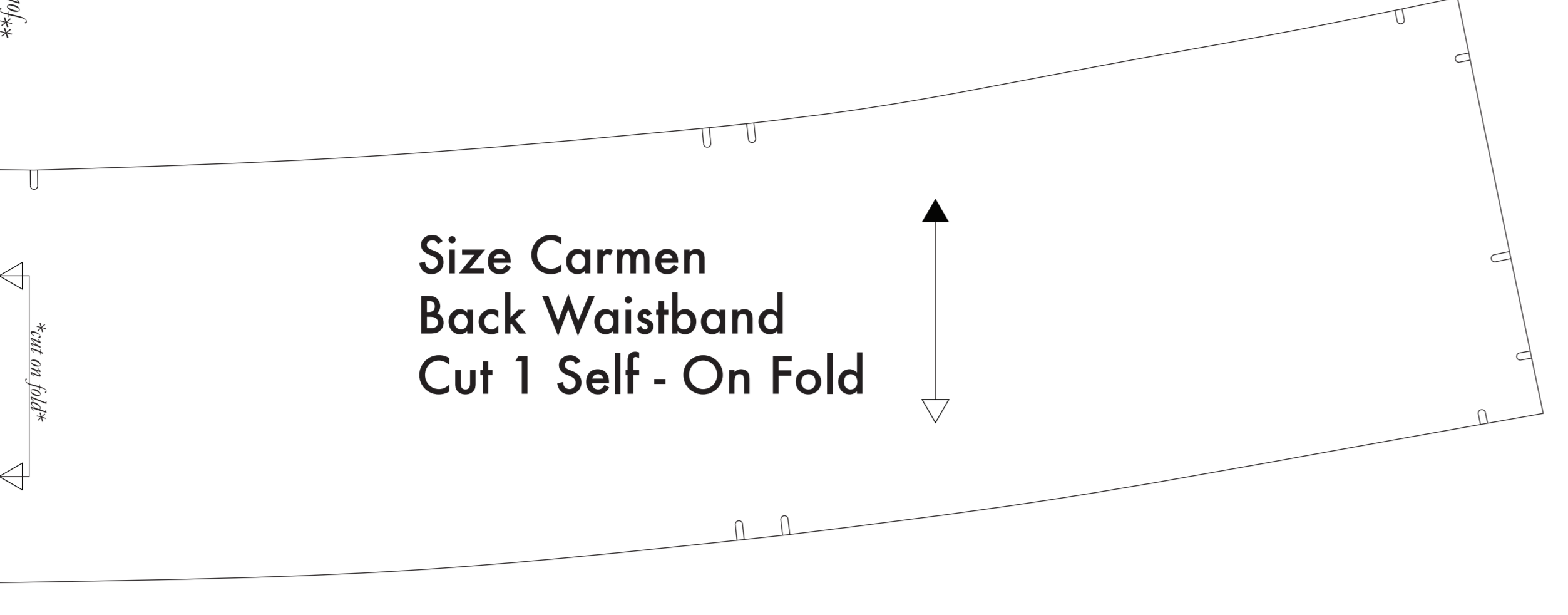
**NOTE C: USING FUSIBLE INTERFACING**  
Fusible interfacing is a material that is used to stabilize, strengthen, and add shape to pieces of fabric. It is used to stabilize, strengthen, and add shape to pieces of fabric. It is used to stabilize, strengthen, and add shape to pieces of fabric.

**Size Carmen Front Pocket Cut 2 Pocketing\***

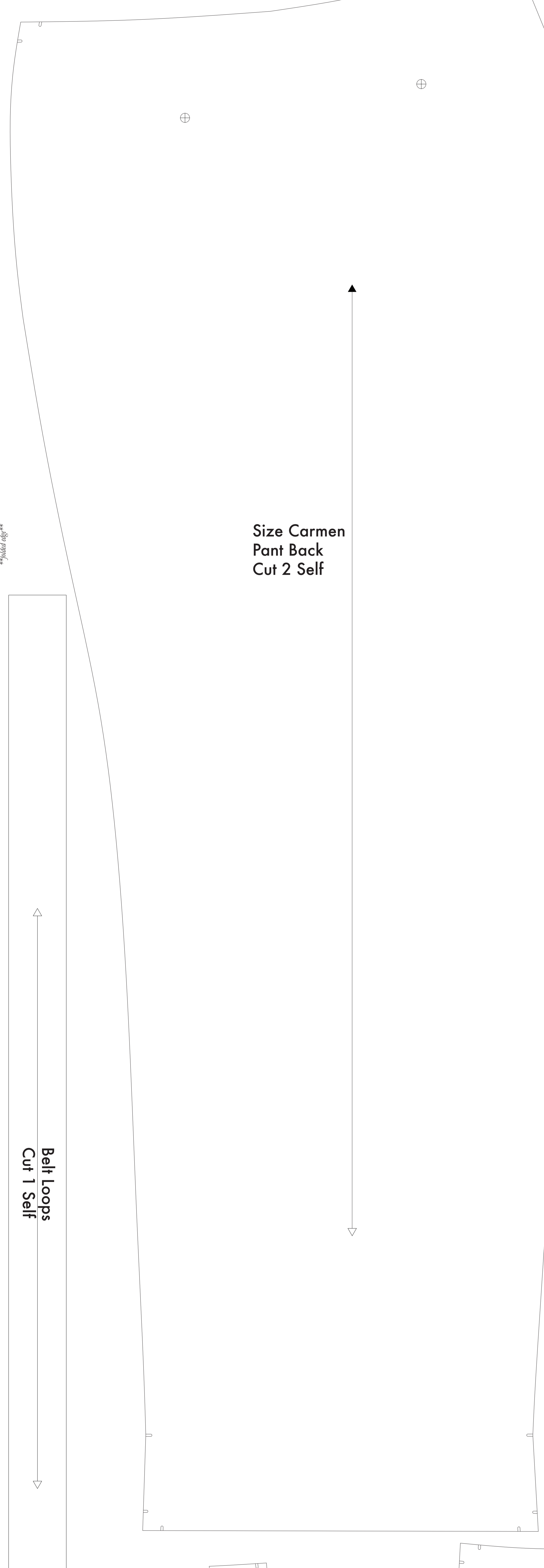
\*or cut 2 self



**Size Carmen Back Waistband Cut 1 Self - On Fold**



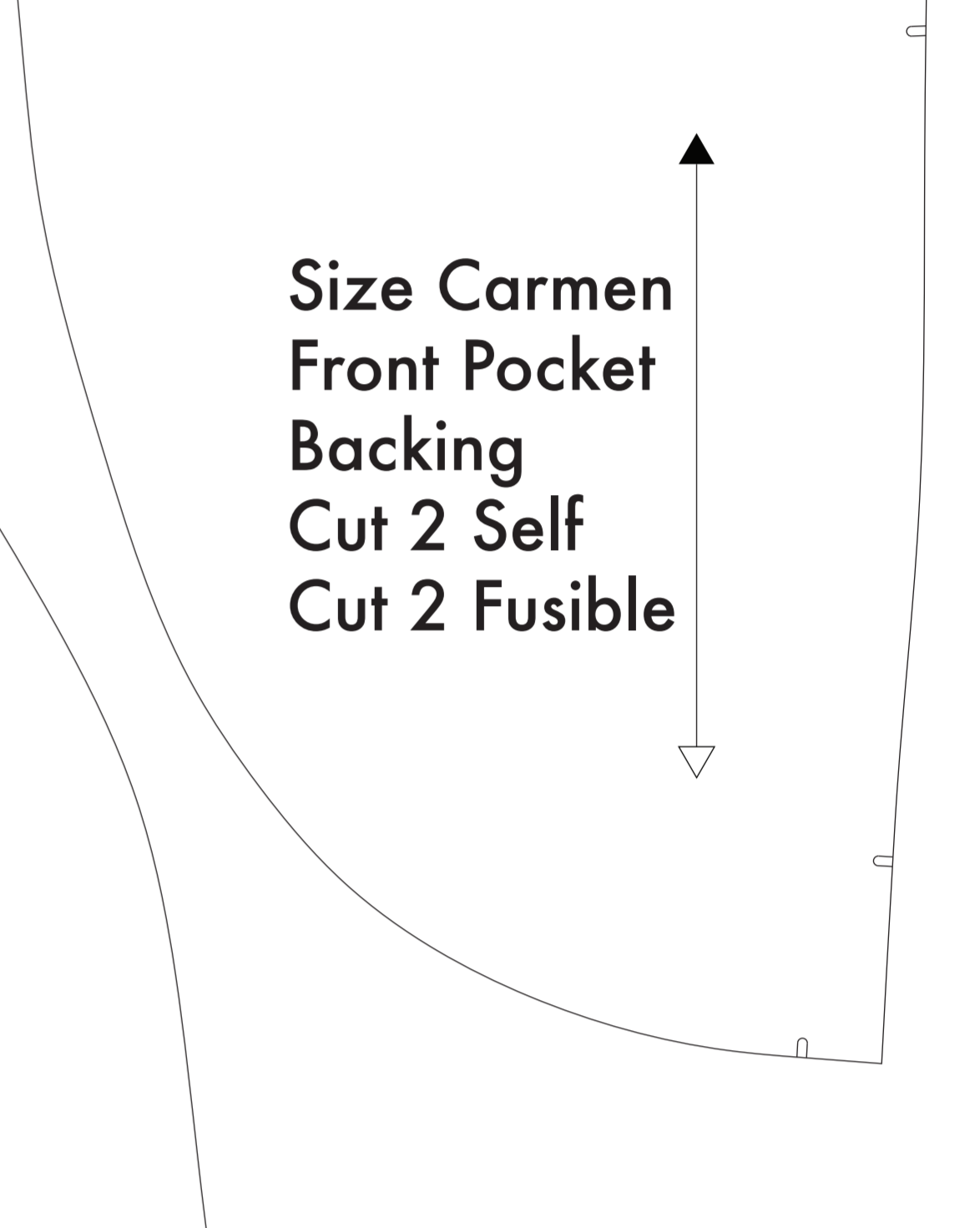
**Size Carmen Pant Back Cut 2 Self**



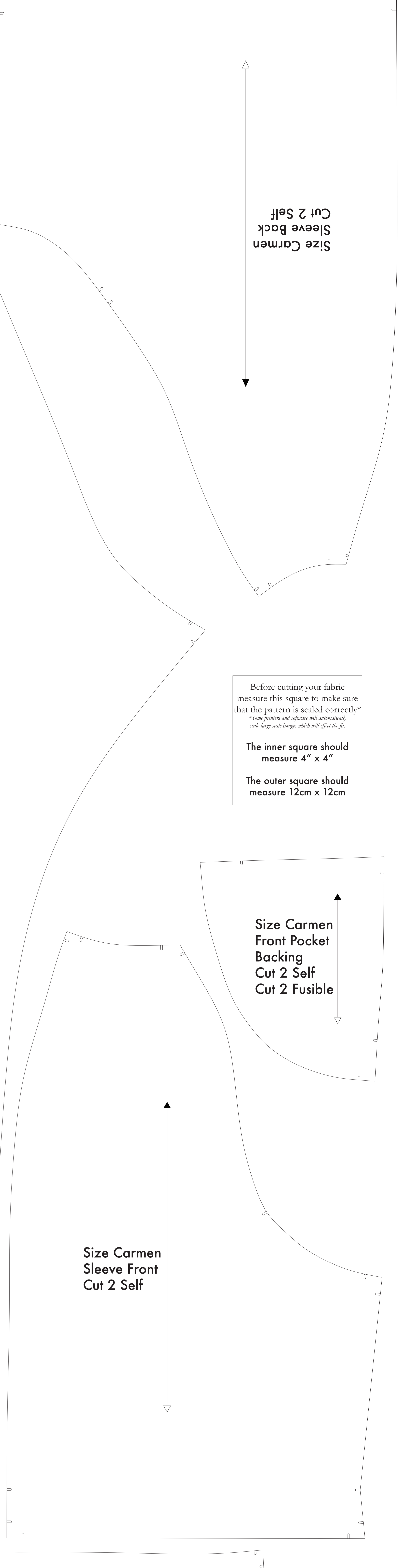
Before cutting your fabric measure this square to make sure that the pattern is scaled correctly\*  
\*Some printers and software will automatically scale large image which will affect the fit.

The inner square should measure 4" x 4"  
The outer square should measure 12cm x 12cm

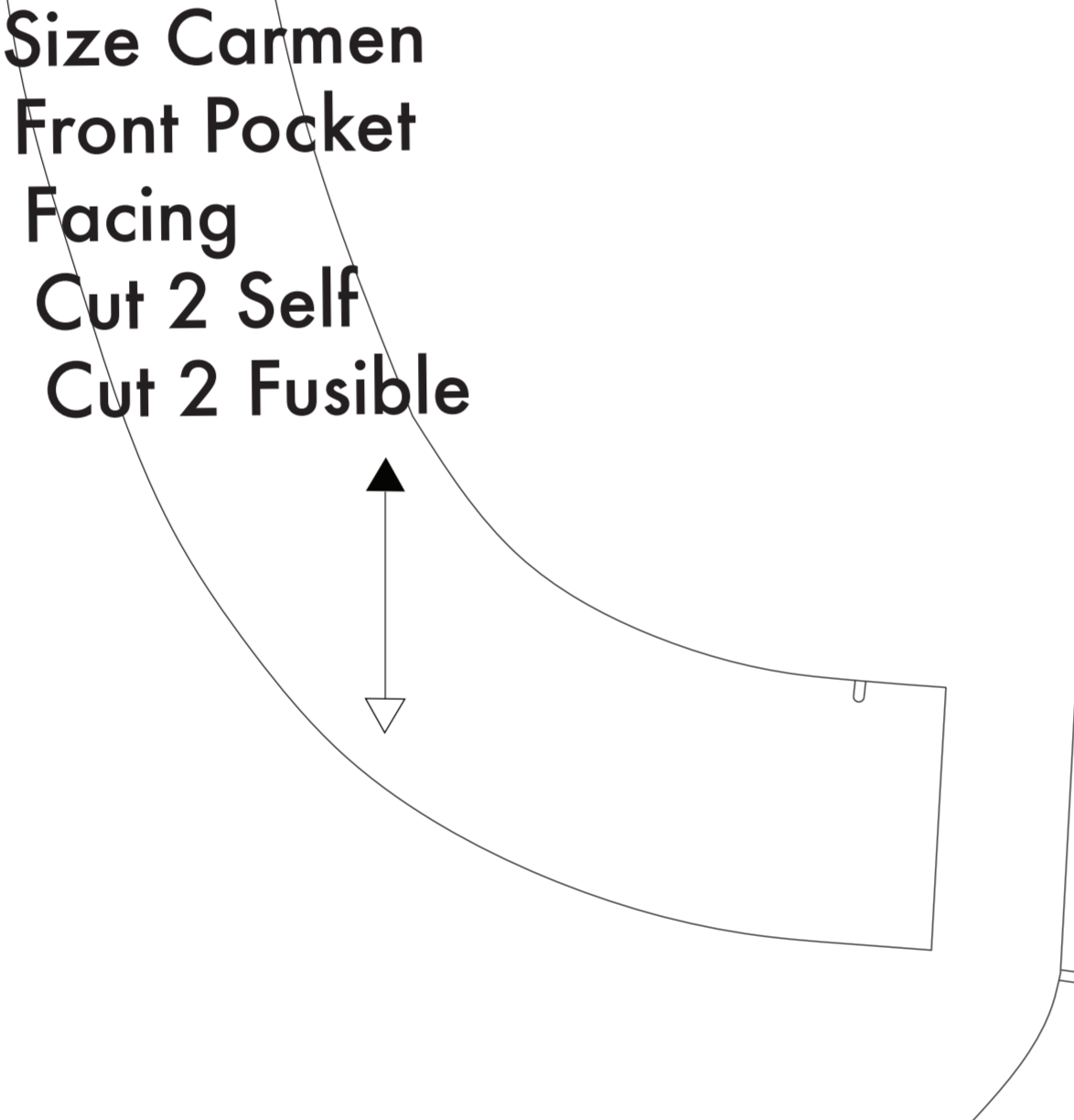
**Size Carmen Front Pocket Backing Cut 2 Self Cut 2 Fusible**



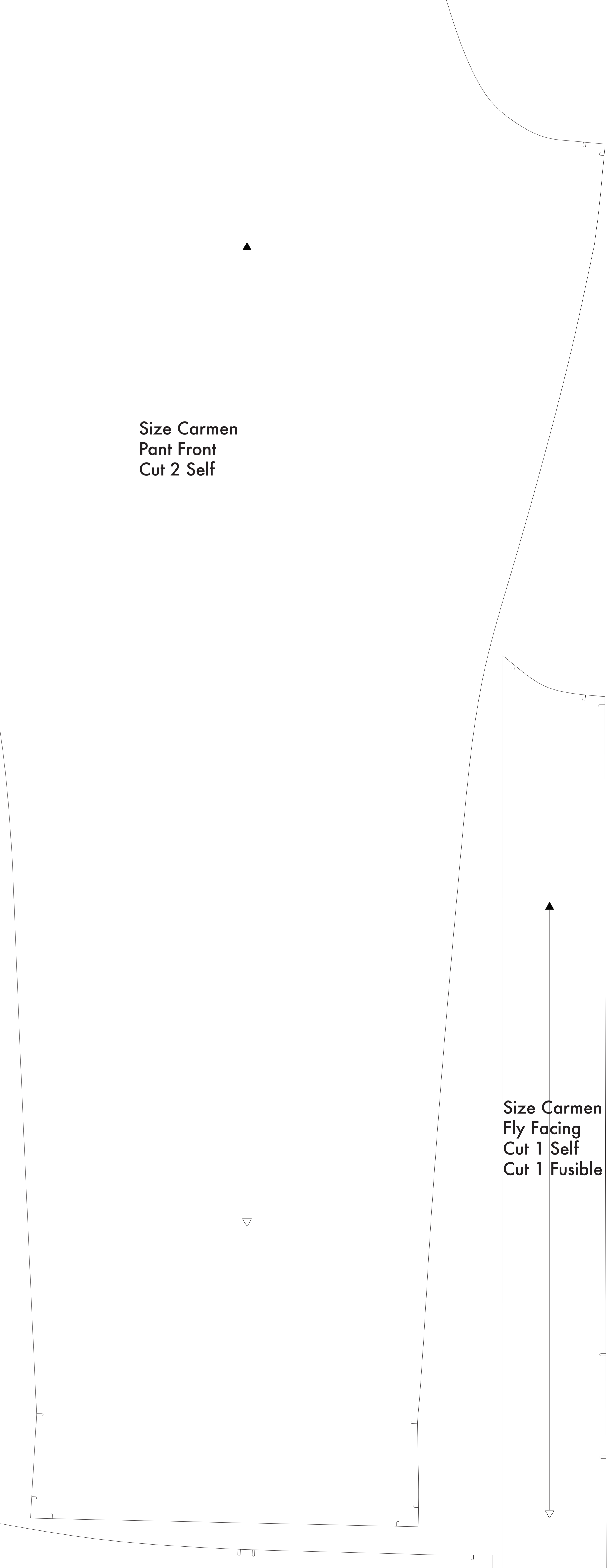
**Size Carmen Sleeve Front Cut 2 Self**



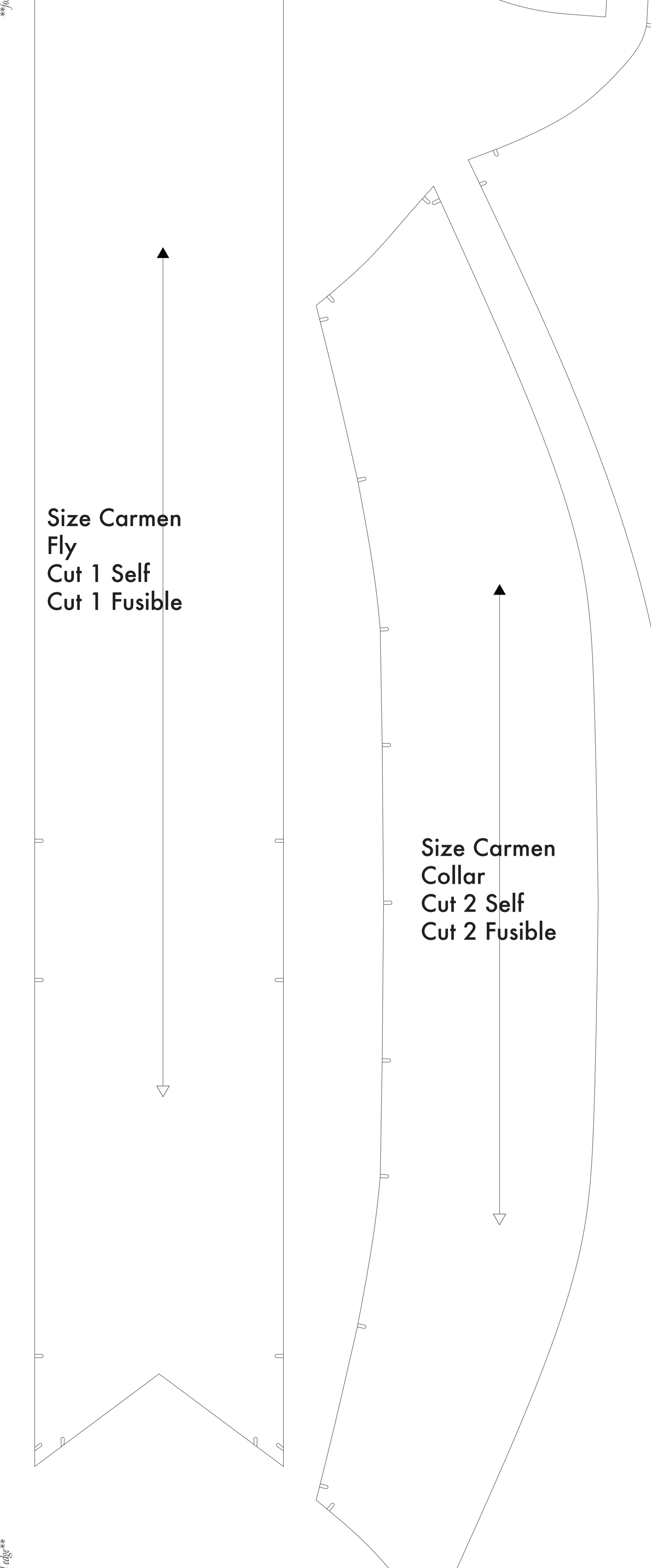
**Size Carmen Front Pocket Facing Cut 2 Self Cut 2 Fusible**



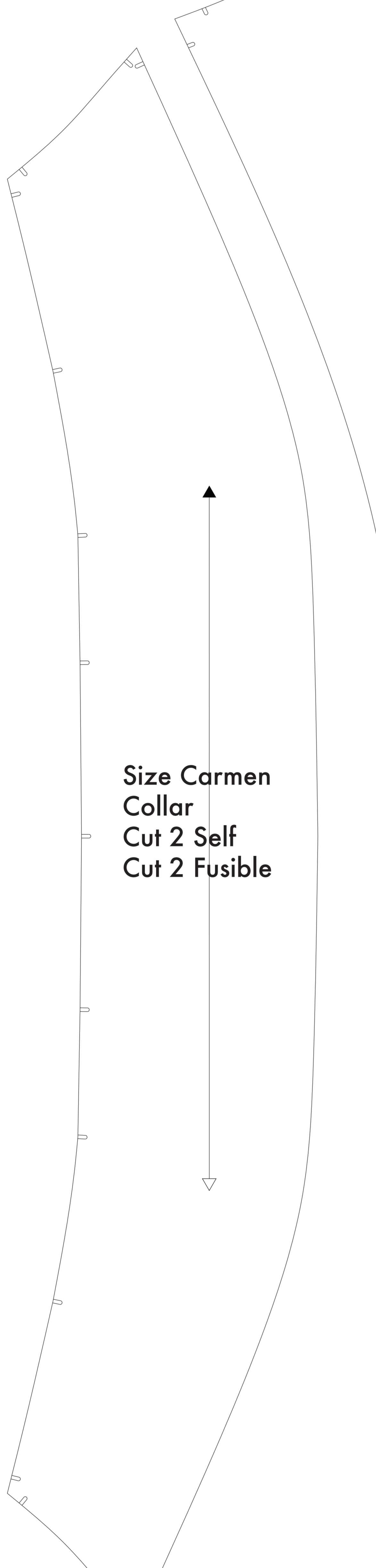
**Size Carmen Pant Front Cut 2 Self**



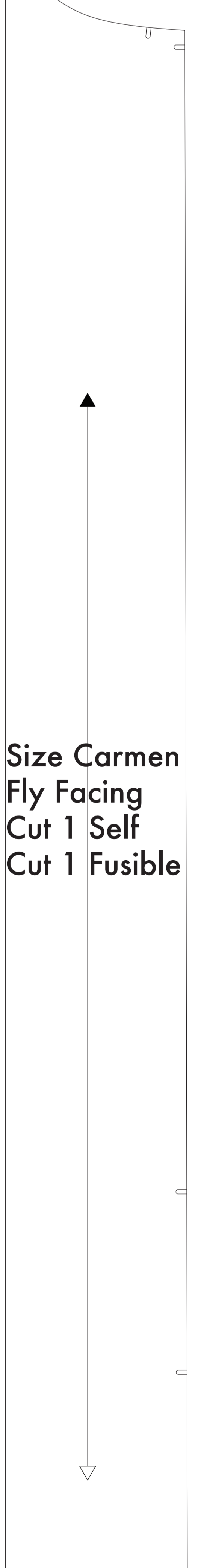
**Size Carmen Fly Cut 1 Self Cut 1 Fusible**



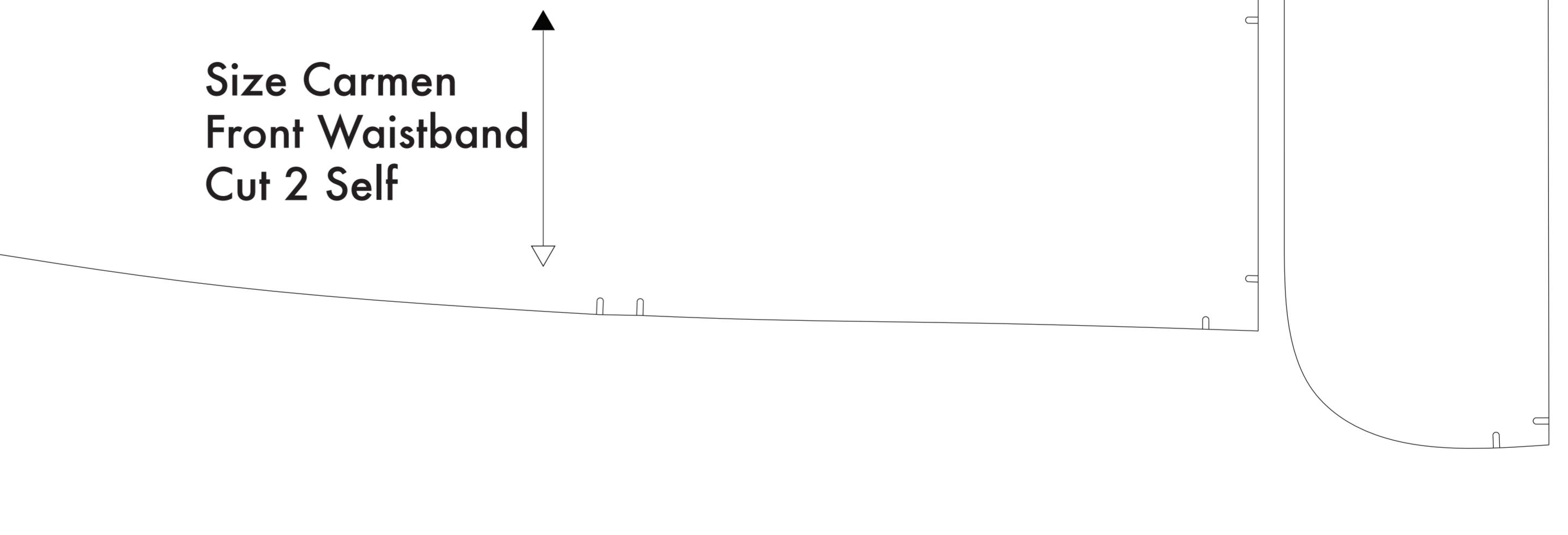
**Size Carmen Collar Cut 2 Self Cut 2 Fusible**



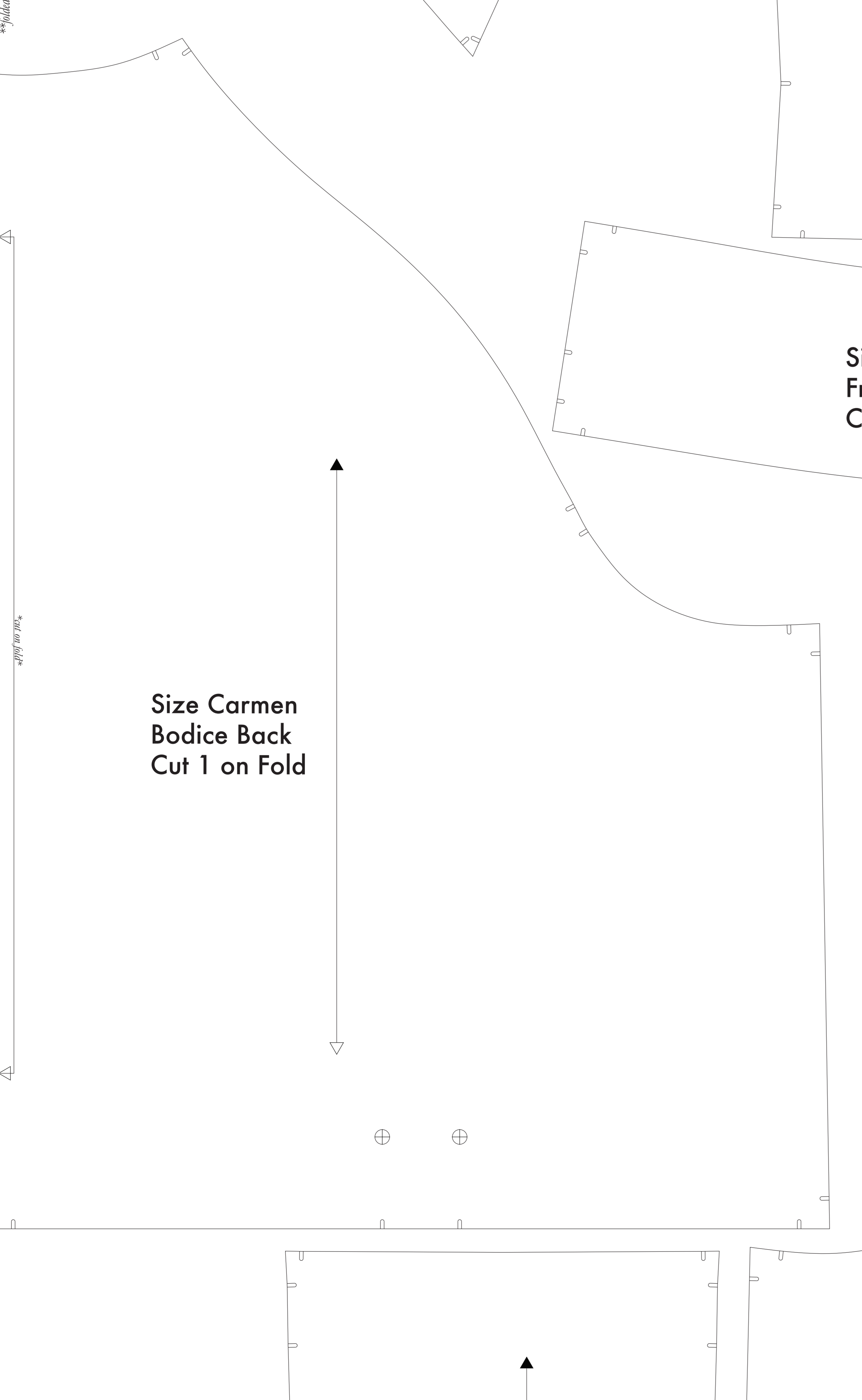
**Size Carmen Fly Facing Cut 1 Self Cut 1 Fusible**



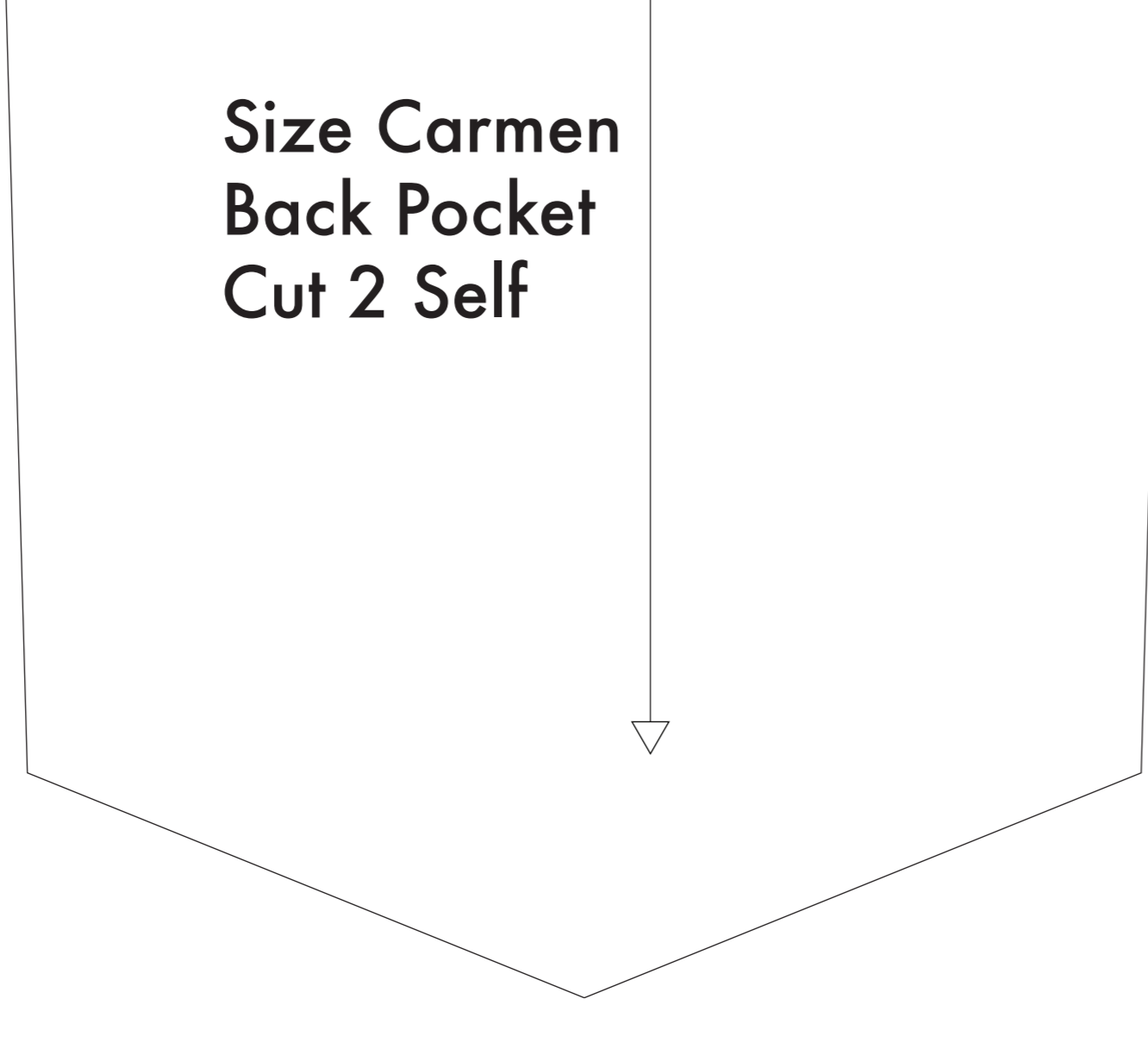
**Size Carmen Front Waistband Cut 2 Self**



**Size Carmen Bodice Back Cut 1 on Fold**



**Size Carmen Back Pocket Cut 2 Self**



**Size Carmen Bodice Front Cut 2 Self**

