

- SUPPLIES NEEDED**
- 2-3" YARDS OF 54" WIDE FABRIC
  - SHARP SCISSORS
  - REMOVABLE MARKING MEDIUM (chalk, wax, tailor's tack, etc.)
  - 1/2" NON SEPARATING ZIPPER
  - THREAD
  - SEWING MACHINE
  - FUSIBLE
  - 1/2 YARD OF THINNER POCKET FABRIC

**CUTTING INSTRUCTIONS**

1. Print pattern. You can print this document out on sheets of standard size paper and tape the pieces together, or print on a wide format printer (11" or wider). Please check your printer's settings for approximately 80% if available to you, the BEX recommends wide format printing.
2. Once your pattern is printed, cut along the outermost rectangle to remove any excess paper. This template should fit exactly on a 54" wide or larger piece of fabric that has been folded in half. If your fabric is less than 54" wide, see **NOTE A**. For measuring, hold the pattern in laid out for fabric that does not have a direction. For fabric with a nap, such as velvet or corduroy or fabric with a clear directional print see **NOTE B**.
3. Fold your fabric in half along the lengthwise grain matching shoulder edge to waist edge. Mark the center of the self finished edge of fabric. This center mark keeps the fabric from stretching or fraying. Often it has an edge that resembles any fringe, though you can frequently a clearly finished line with fraying. Avoid this edge as you cut pieces as the seamline frequently differs from the main body of the fabric.
4. Place the paper template on top of your fabric, matching the folded edge of the fabric with the side of the paper marked "folded edge".
5. Place pins throughout the template pinning together both layers of fabric, as well as the paper.
6. Cut around the perimeter of each piece.
7. Laying the paper flat, you will need to stop each of the corners, taking care to not stop beyond the end of the U shaped curve.
8. Make sure you are aligned correctly that an avoid stretching the pattern. Make sure you are aligned correctly that an avoid stretching the pattern. Make sure you are aligned correctly that an avoid stretching the pattern.
9. Mark all corners with chalk, wax or other removable, non-permanent mark. A tailor's tack may also be used. This will be used for the Front Back, Bodice Back, and Fly pieces.
10. **(OPTIONAL)** Cut fusible interfacing pieces (see **NOTE C** for more info). Pattern pieces that use fusible will be marked with the direction "Cut 2 Fusible" or "Cut 1 Fusible". These pieces are: the Collar, Fly Facing, Front Pocket Facing, and Front Pocket Backing. To cut the fusible, lay the material down with the glue side facing up, then place your pattern down and cut around the perimeter of each piece and mark.
11. Cut the Front Pocket Bag out of a lighter weighting material. If you are not using a pocketing material, then the Front Pocket Bag may be cut alongside your other pattern pieces. Pocketing is used to make back to waist of bodice material - You will find an example of pocketing on any pair of blue jeans.

**NOTE A: FABRIC LESS THAN 54" WIDE**

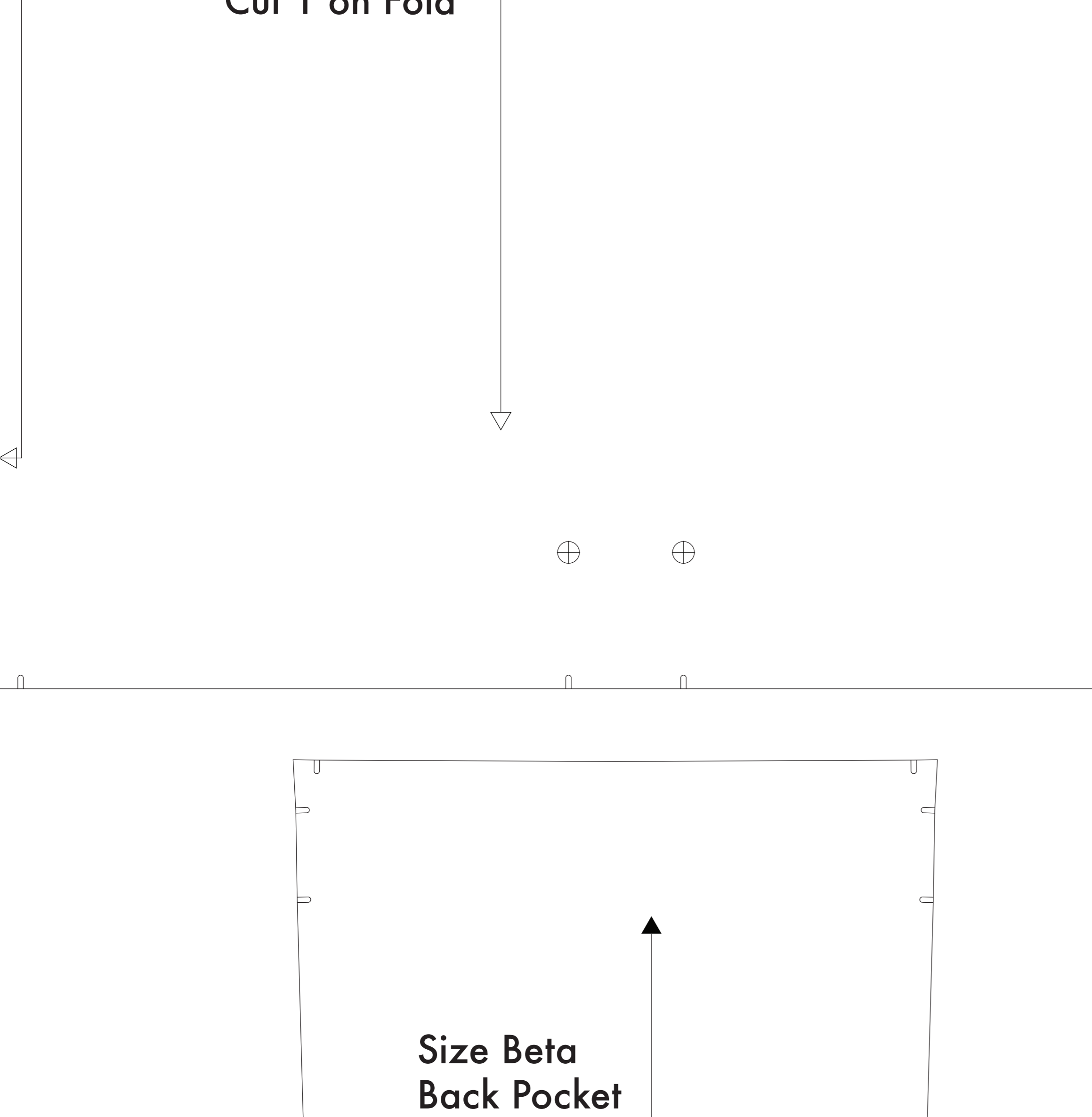
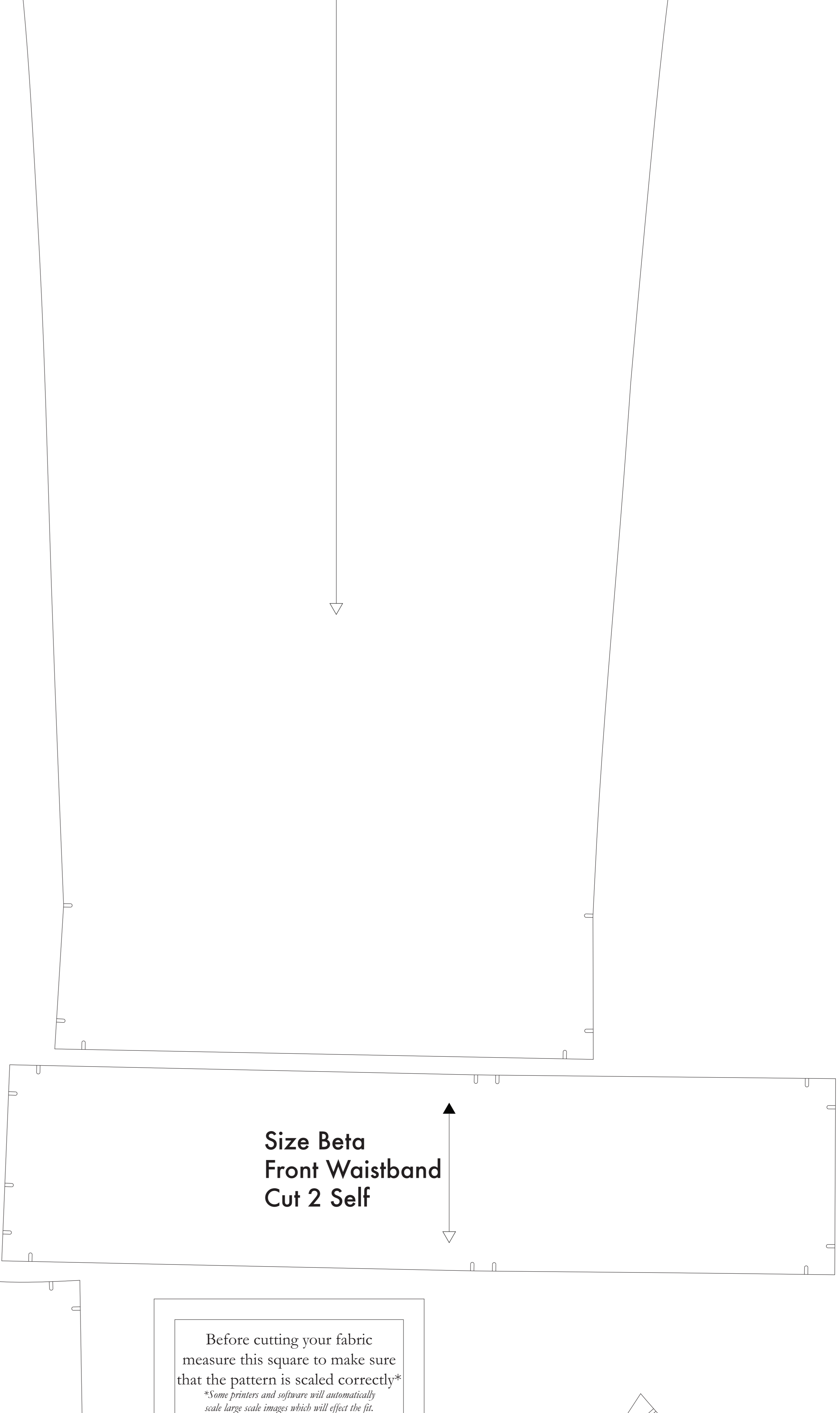
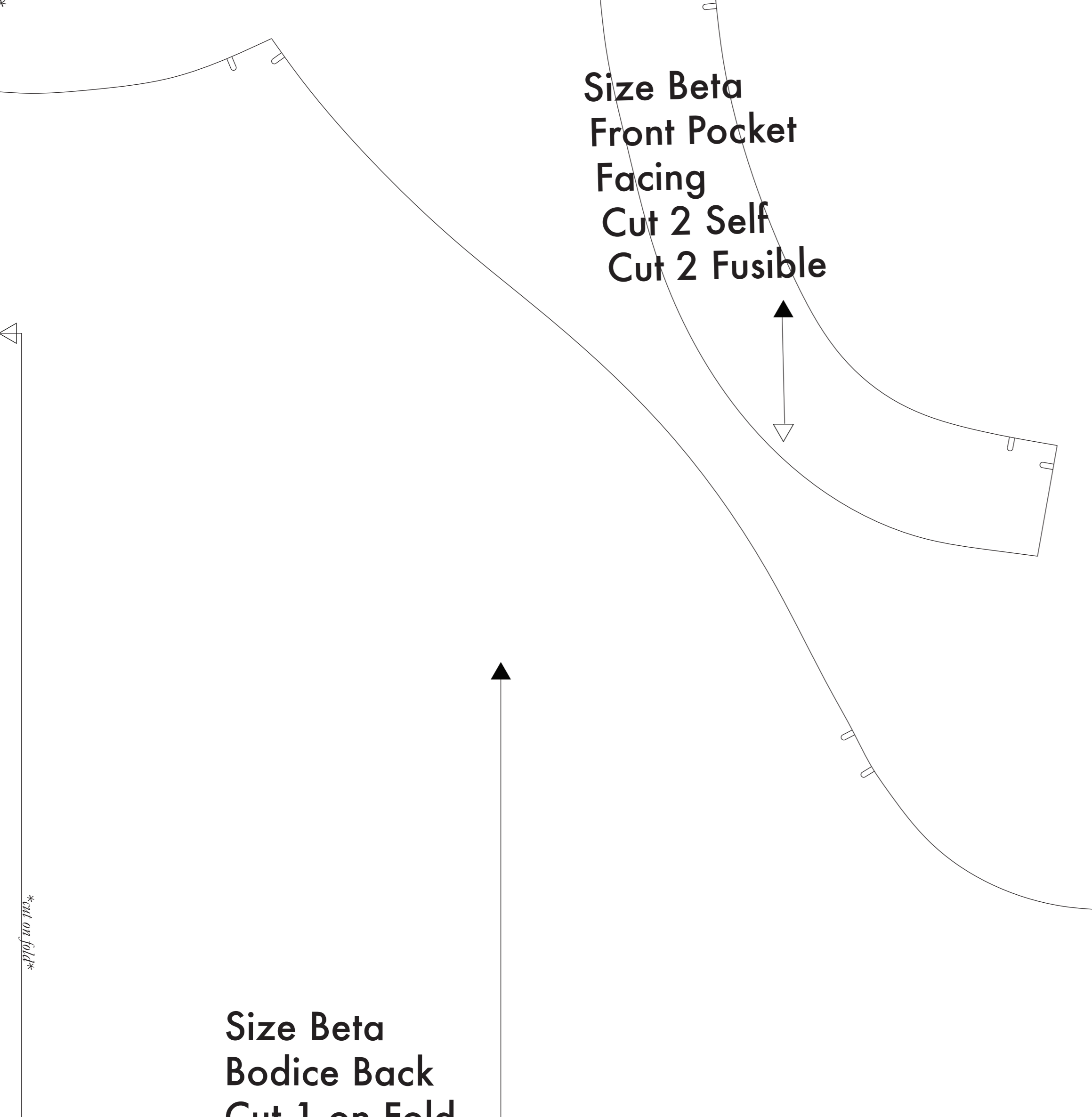
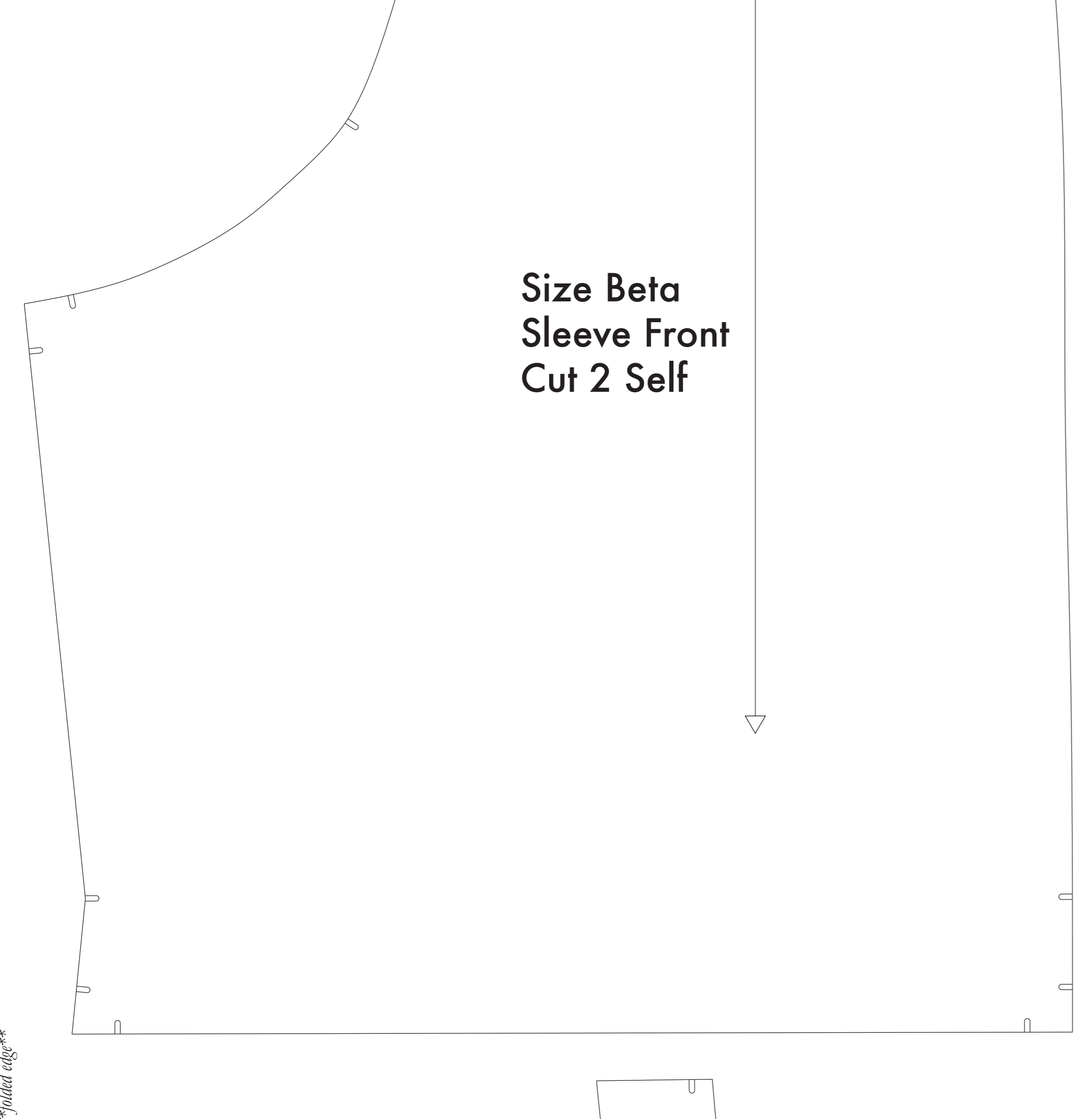
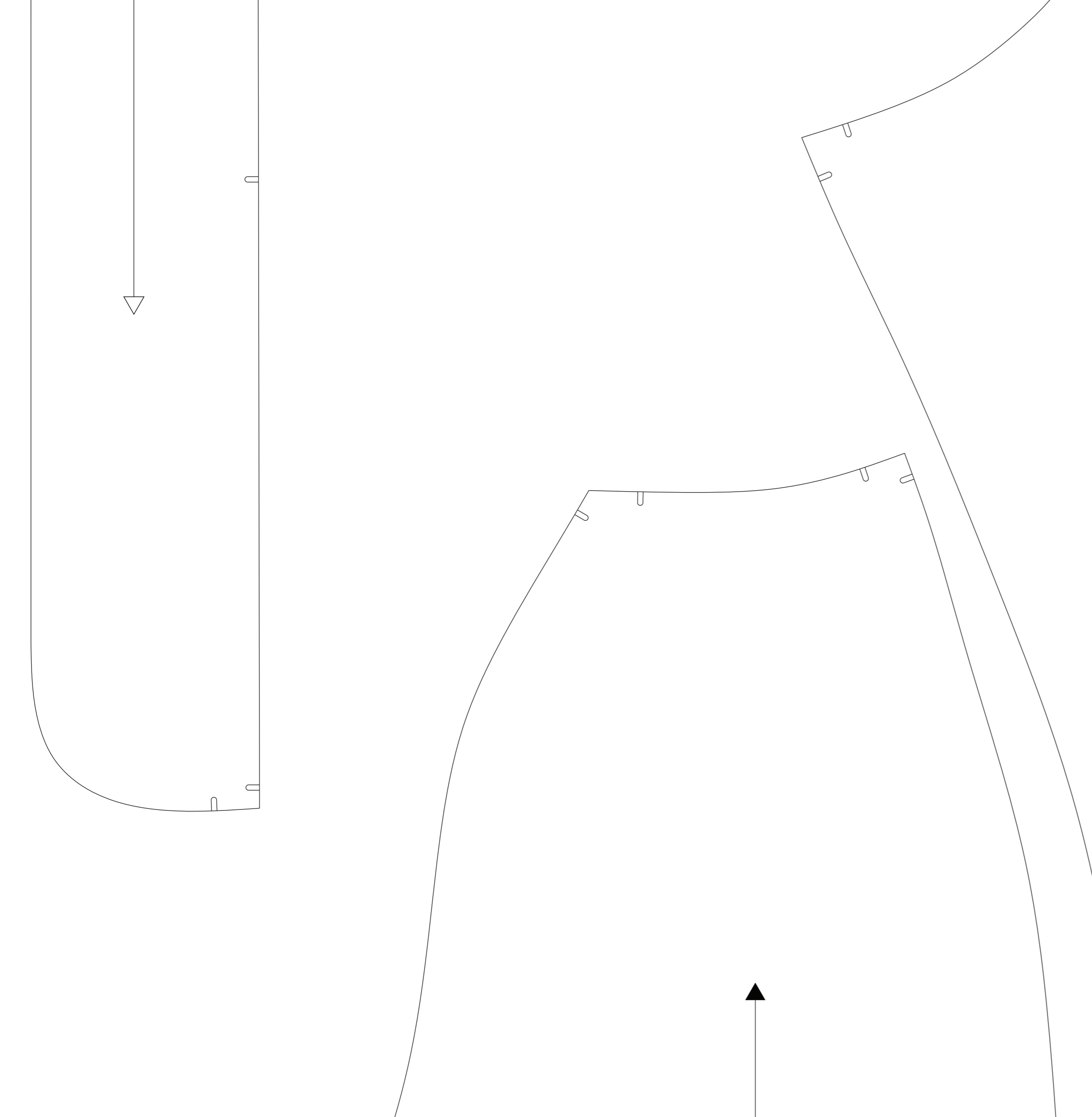
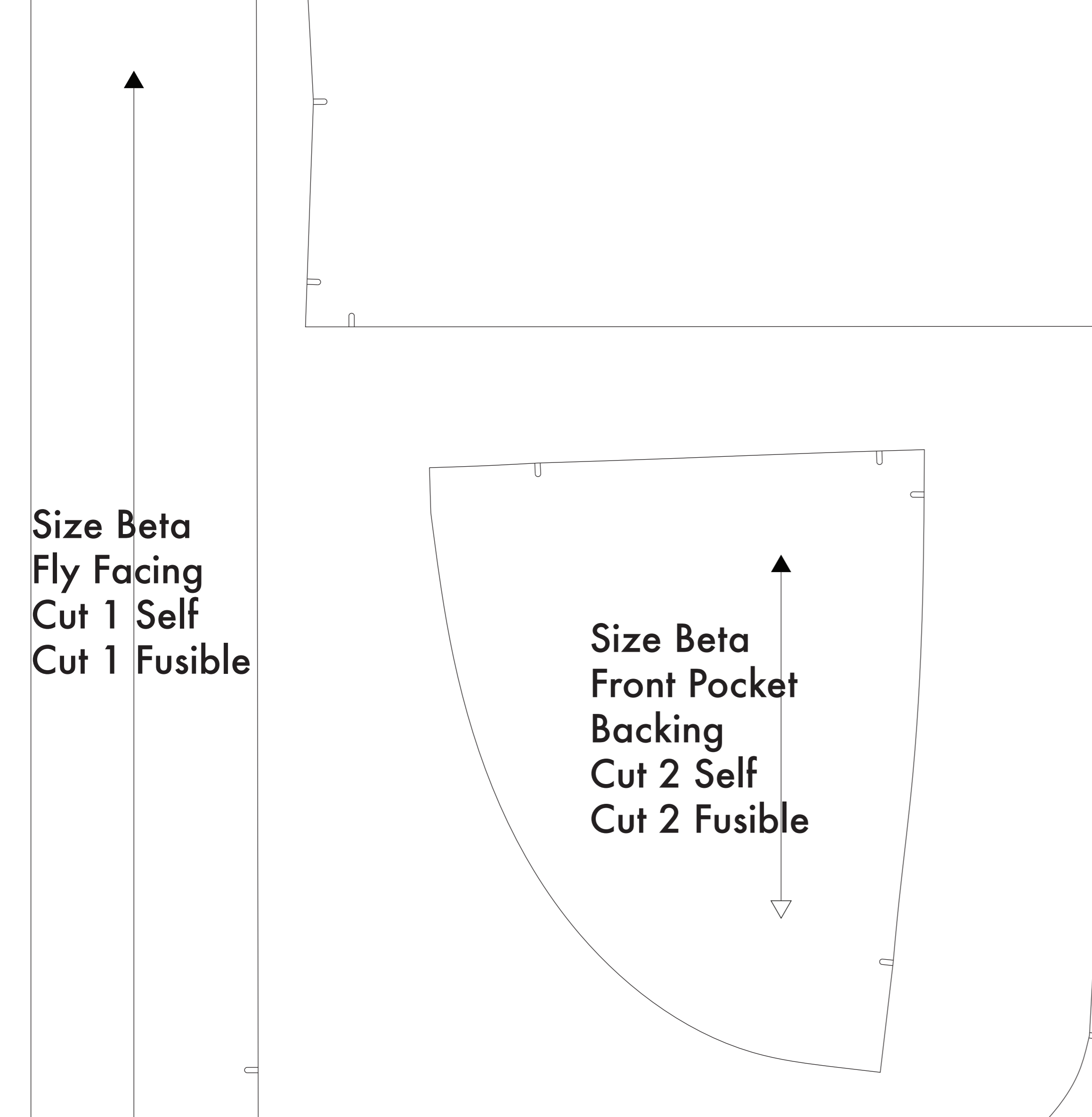
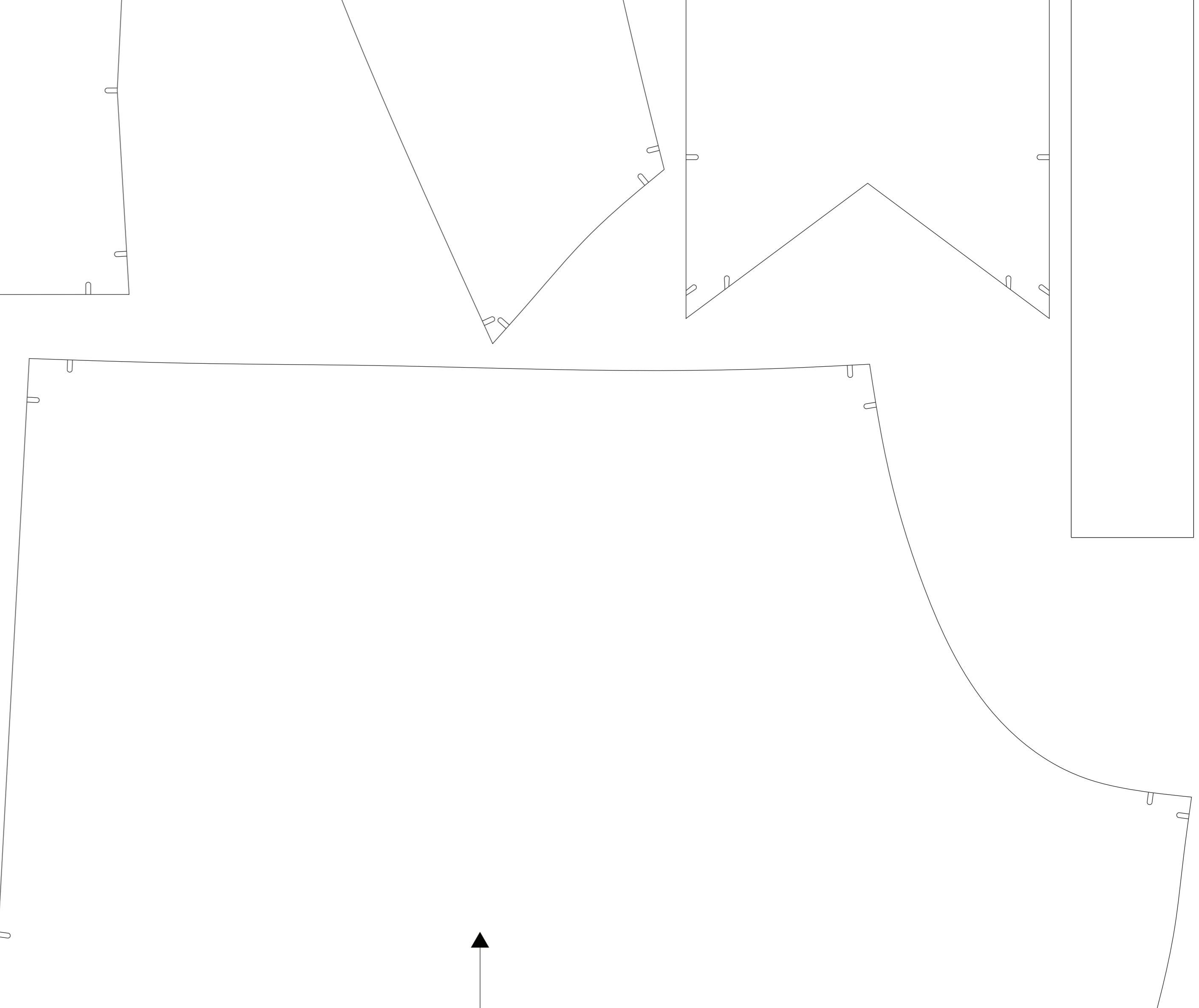
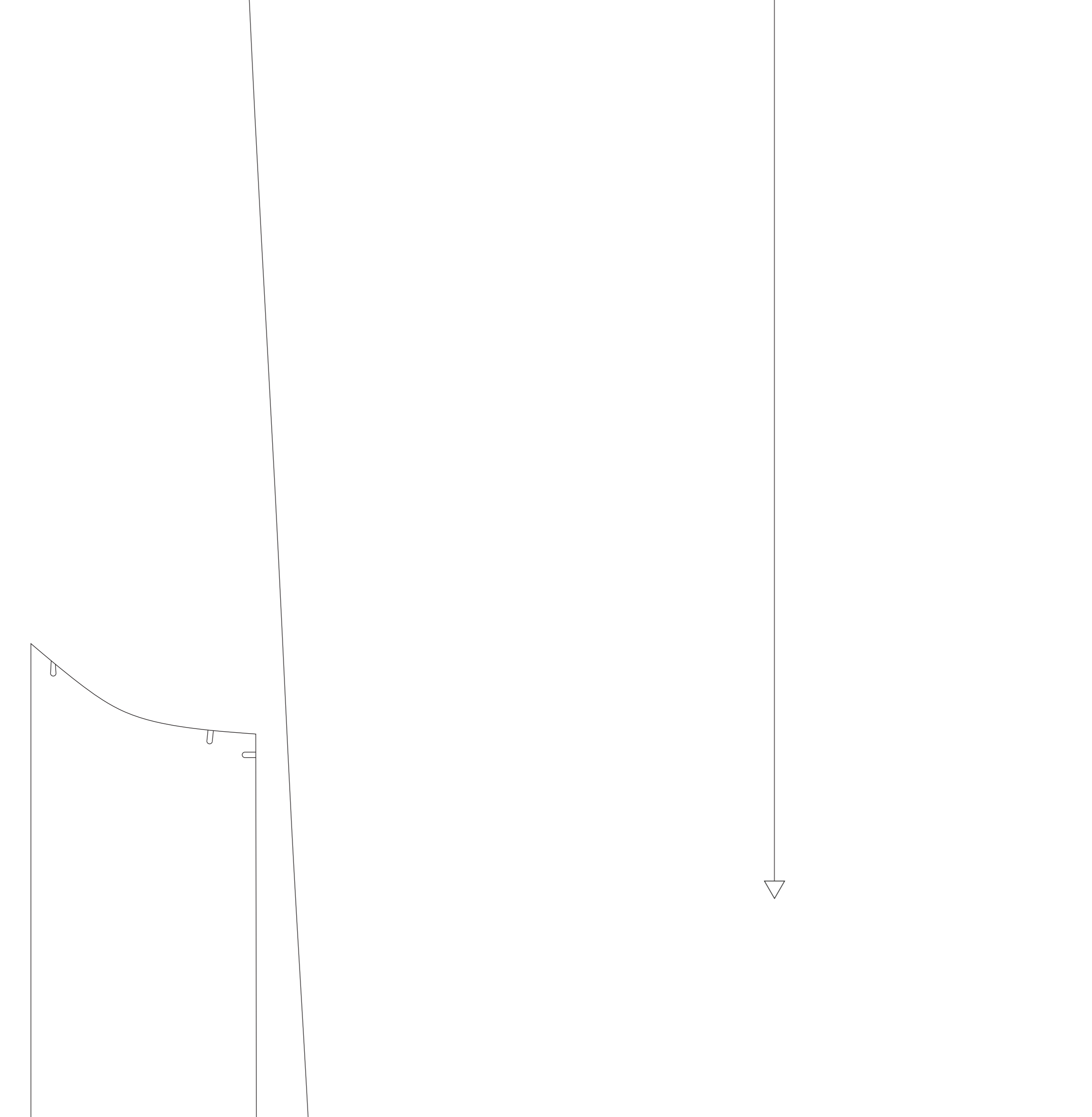
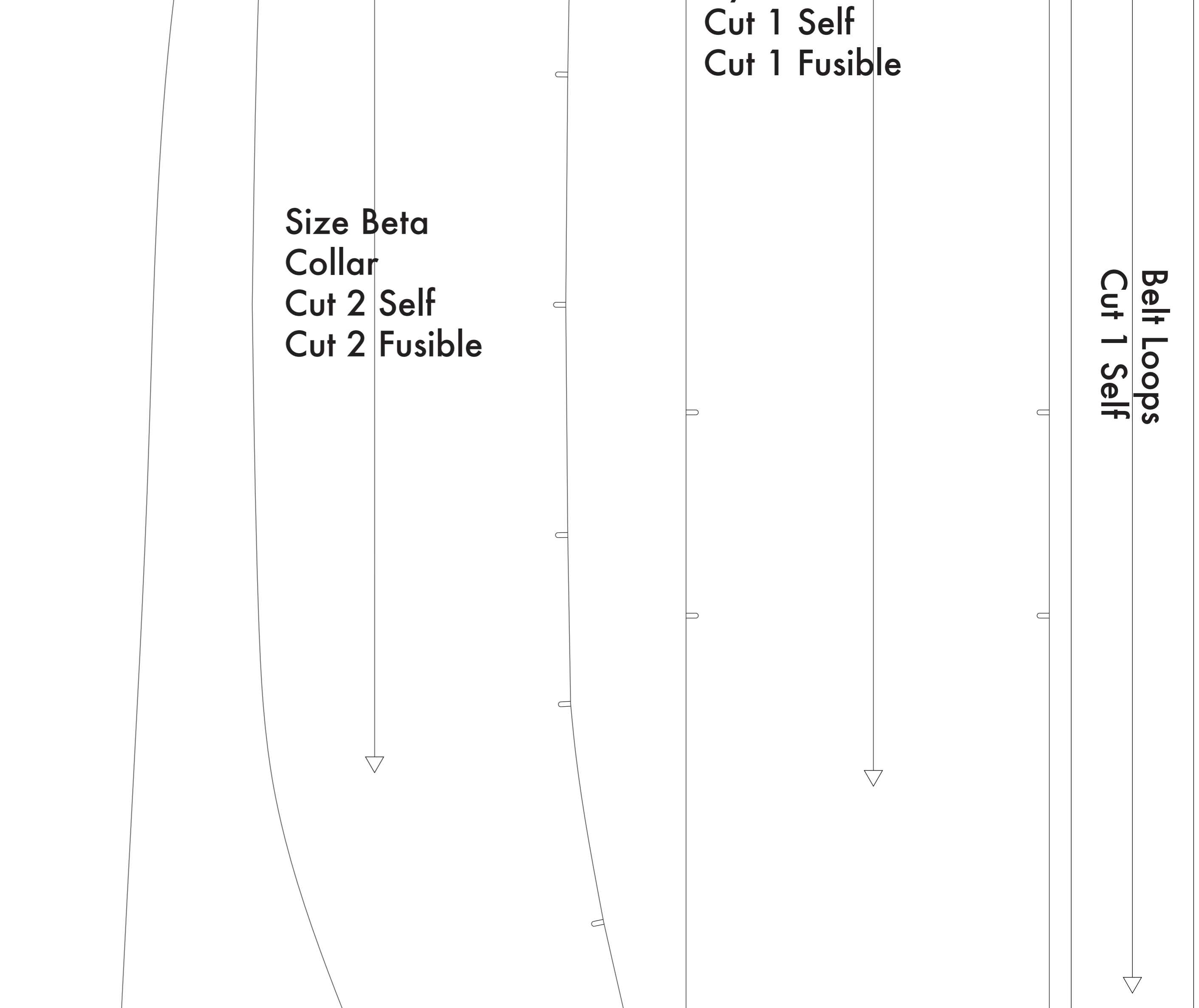
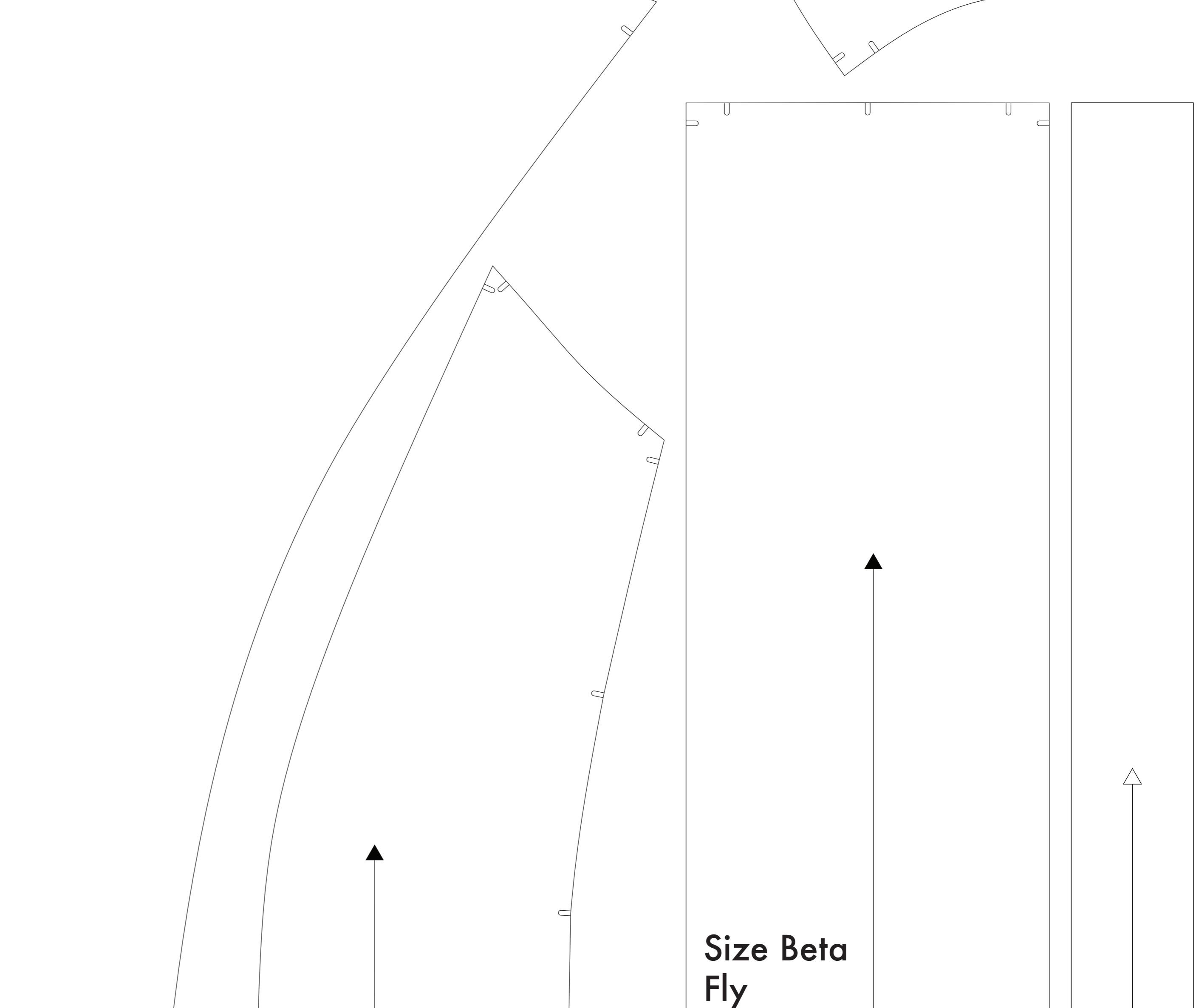
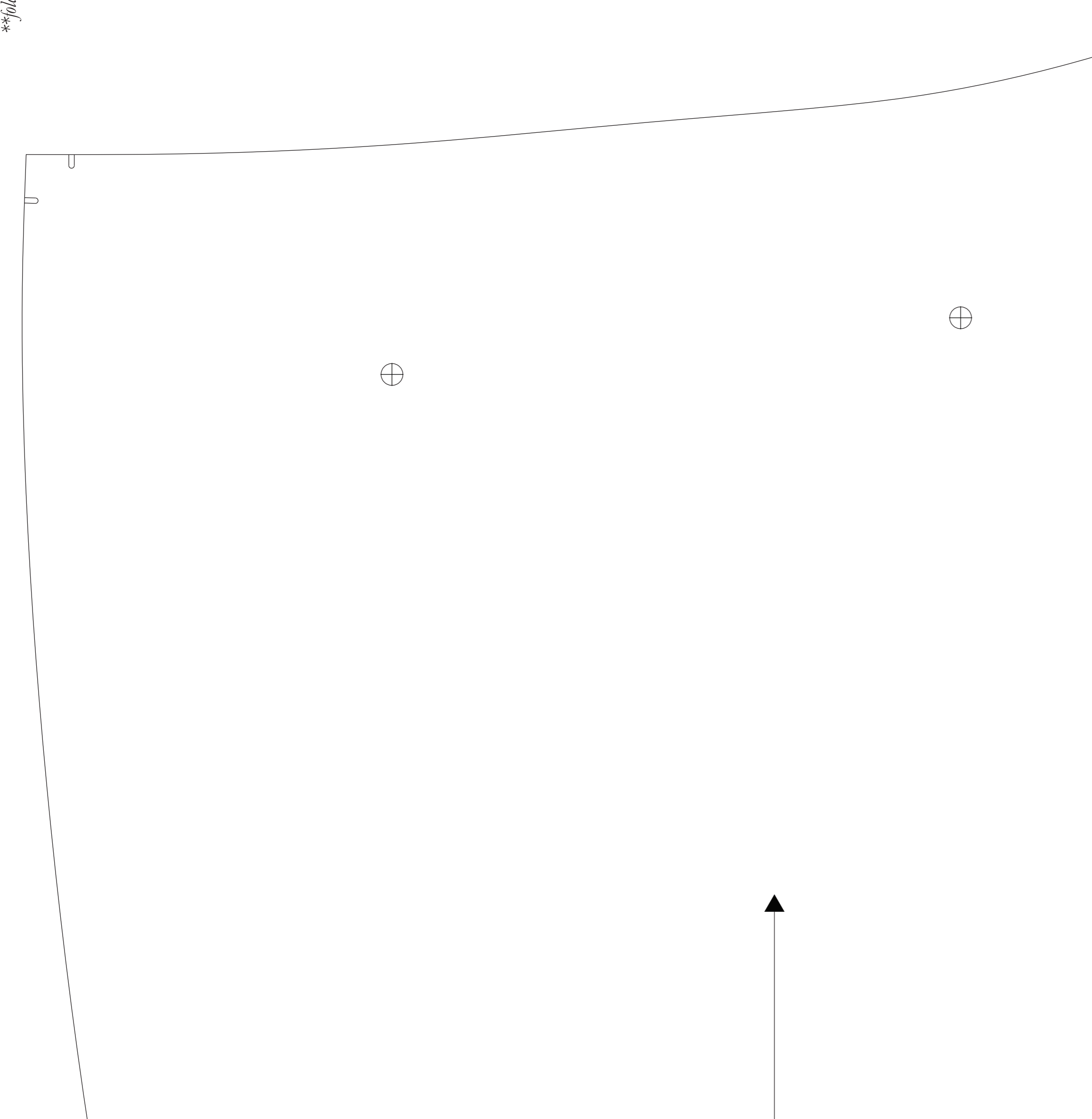
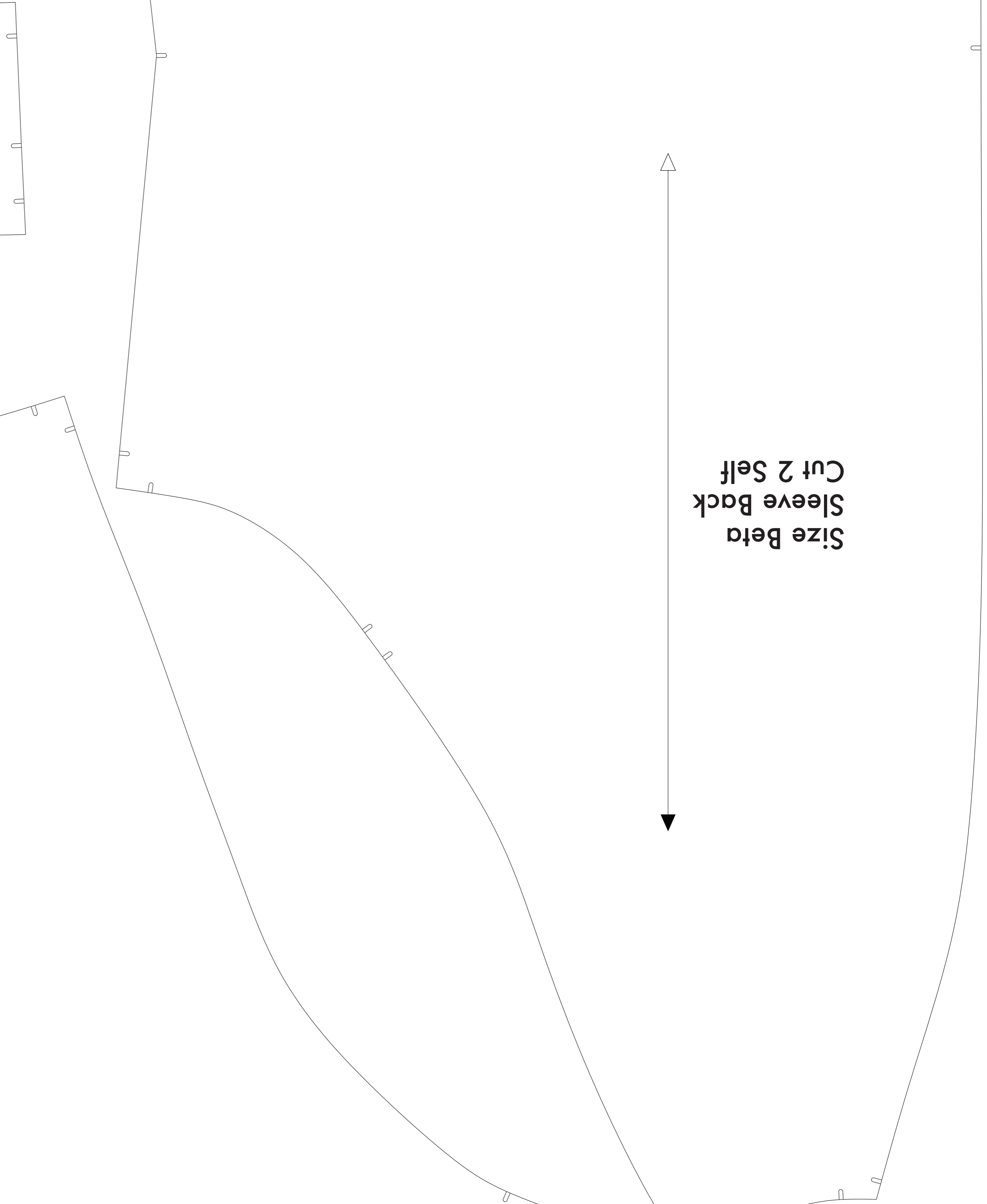
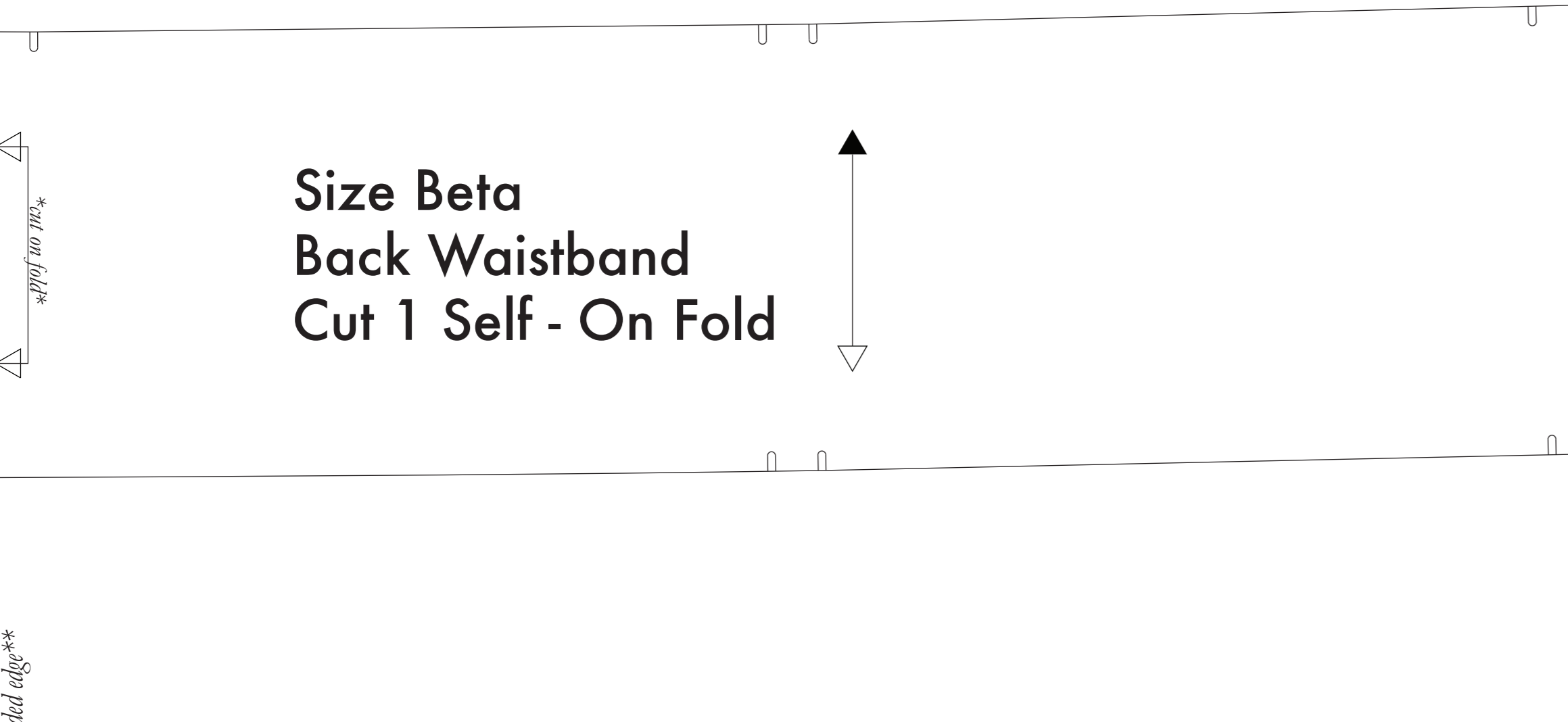
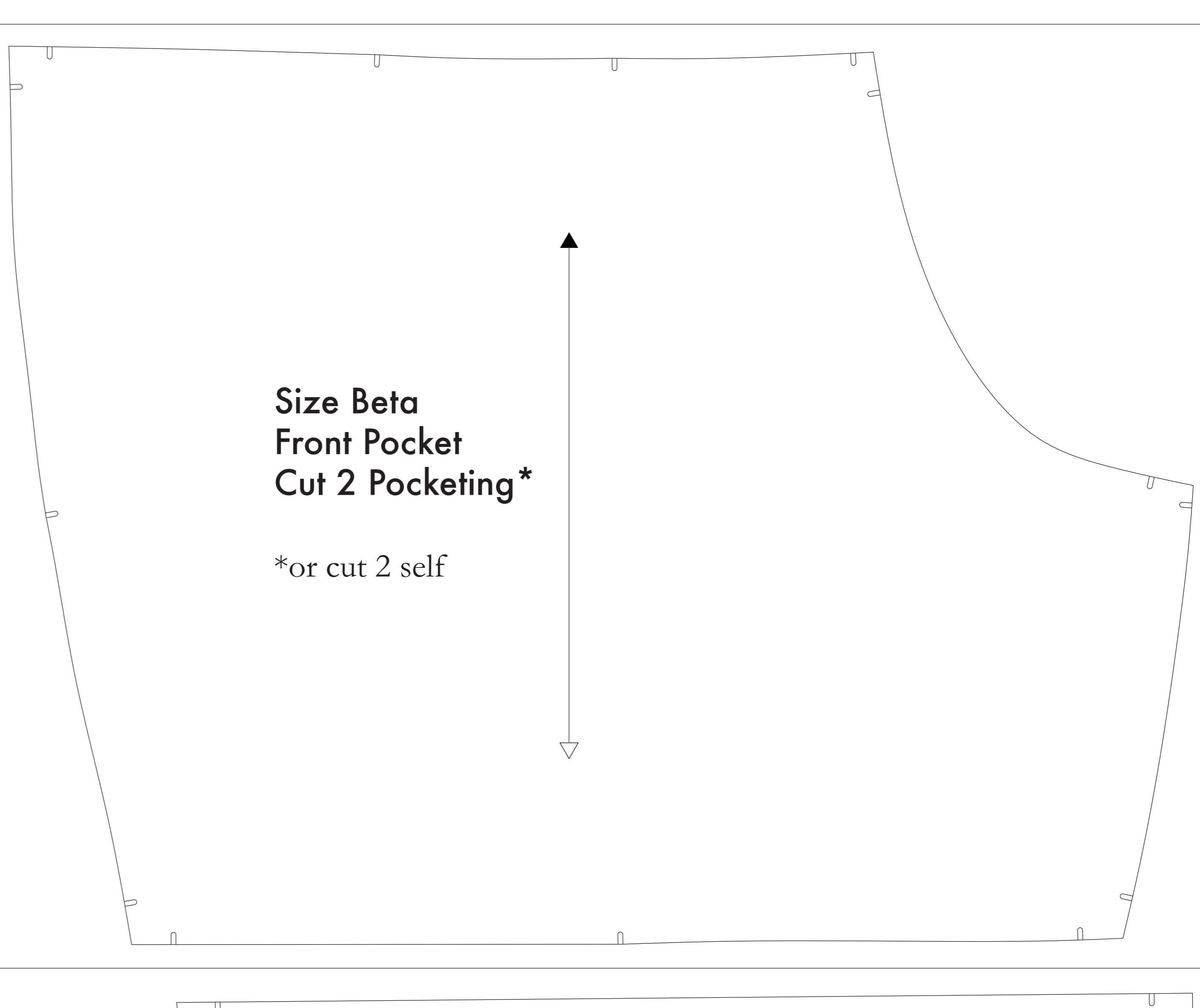
If you have fabric that is less than 54" wide, you will need to cut your pieces in two halves. This is a good idea as it will ensure a better fit. You will need to cut your pieces in two halves. This is a good idea as it will ensure a better fit. You will need to cut your pieces in two halves. This is a good idea as it will ensure a better fit.

**NOTE B: FABRIC WITH NAP OR DIRECTIONAL PATTERN**

For fabric with a nap, such as velvet or corduroy, fabric with a directional pattern, such as a plaid or check, or fabric with a directional pattern, such as a plaid or check, or fabric with a directional pattern, such as a plaid or check.

**NOTE C: LONG FUSIBLE INTERFACING**

Fusible interfacing is a material that is used to provide structure and support to fabric. It is used to provide structure and support to fabric. It is used to provide structure and support to fabric.



Before cutting your fabric measure this square to make sure that the pattern is scaled correctly\*  
 \*Some printers and software will automatically scale large scale images which will affect the fit.  
 The inner square should measure 4" x 4"  
 The outer square should measure 12cm x 12cm