



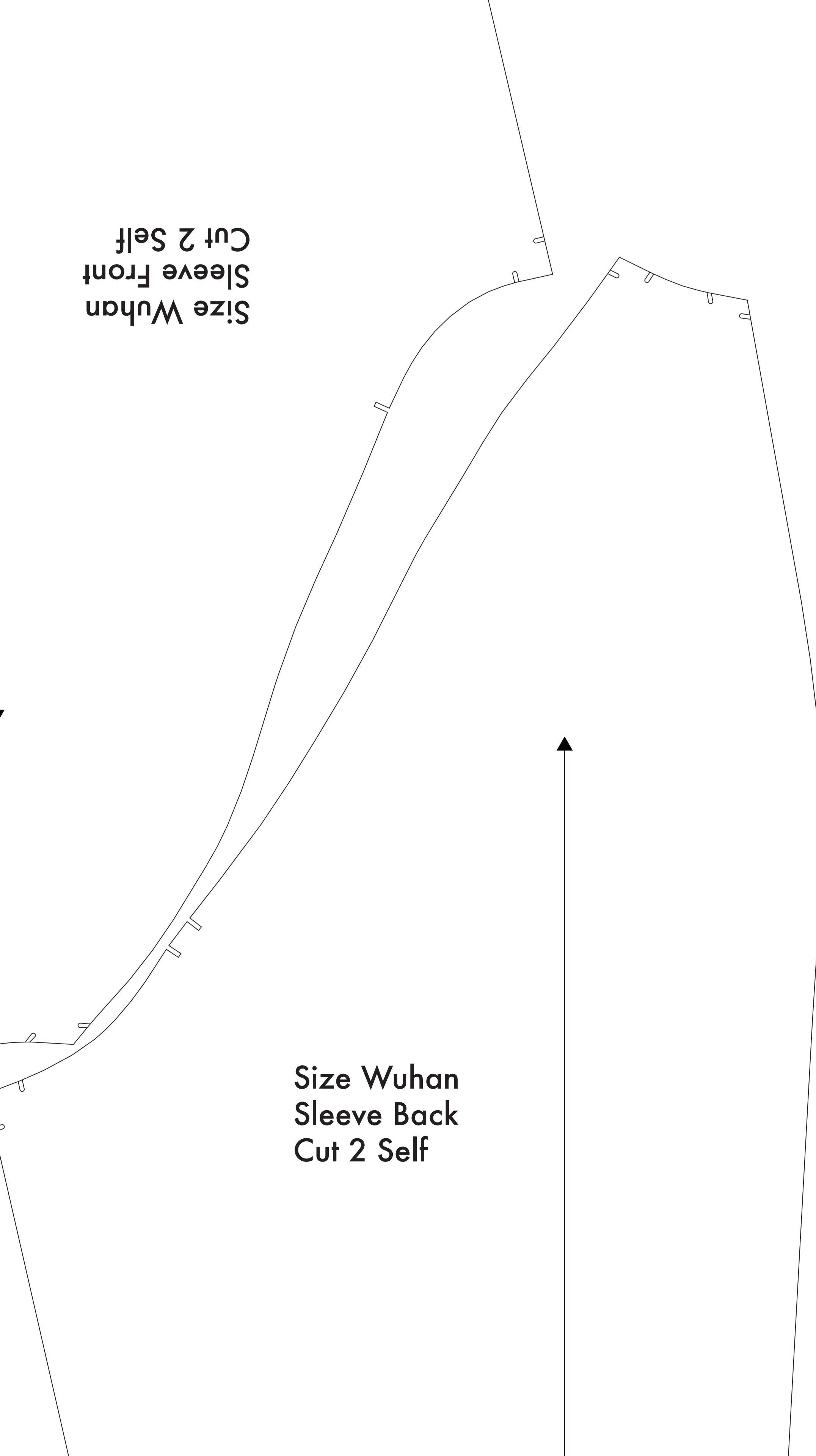
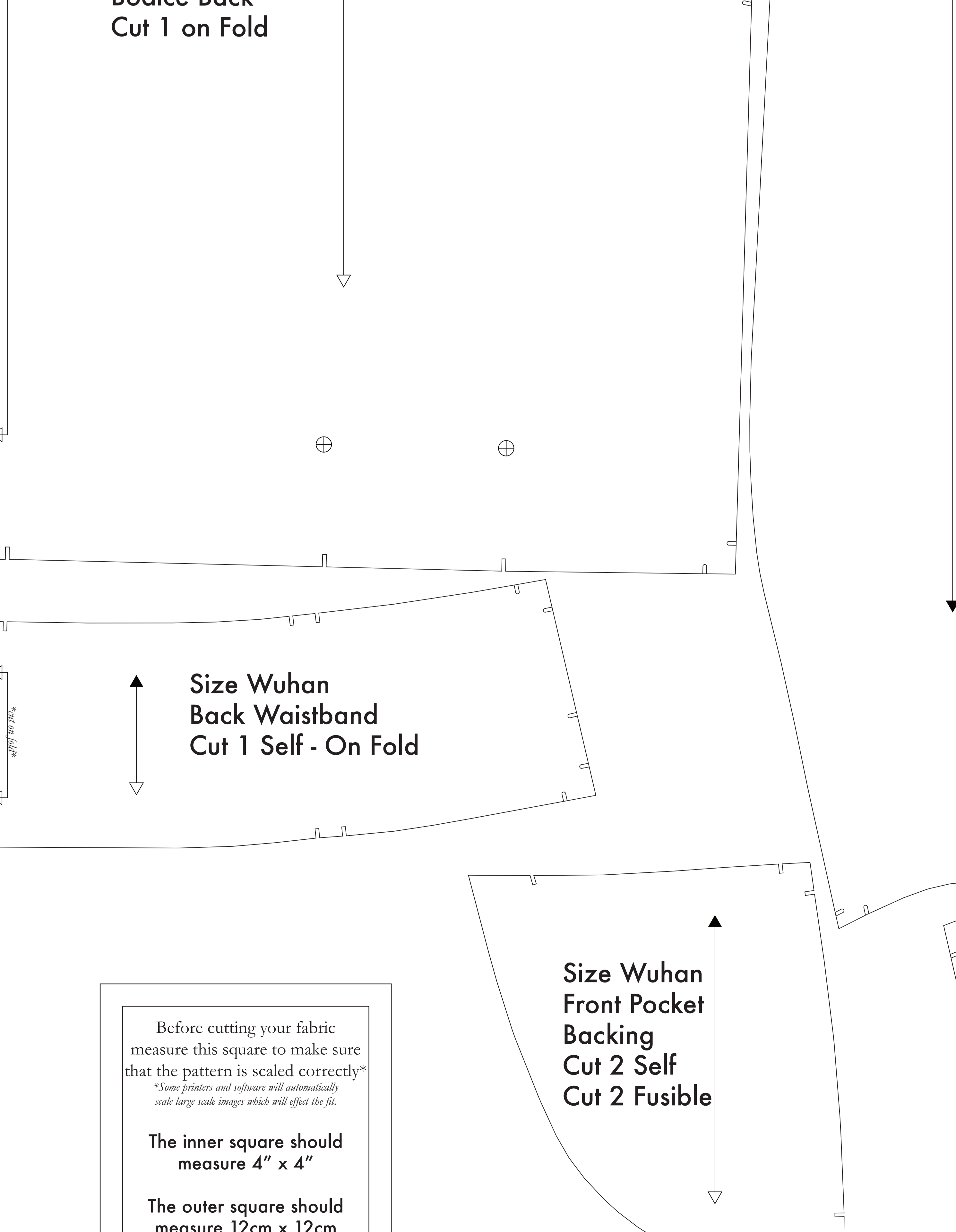
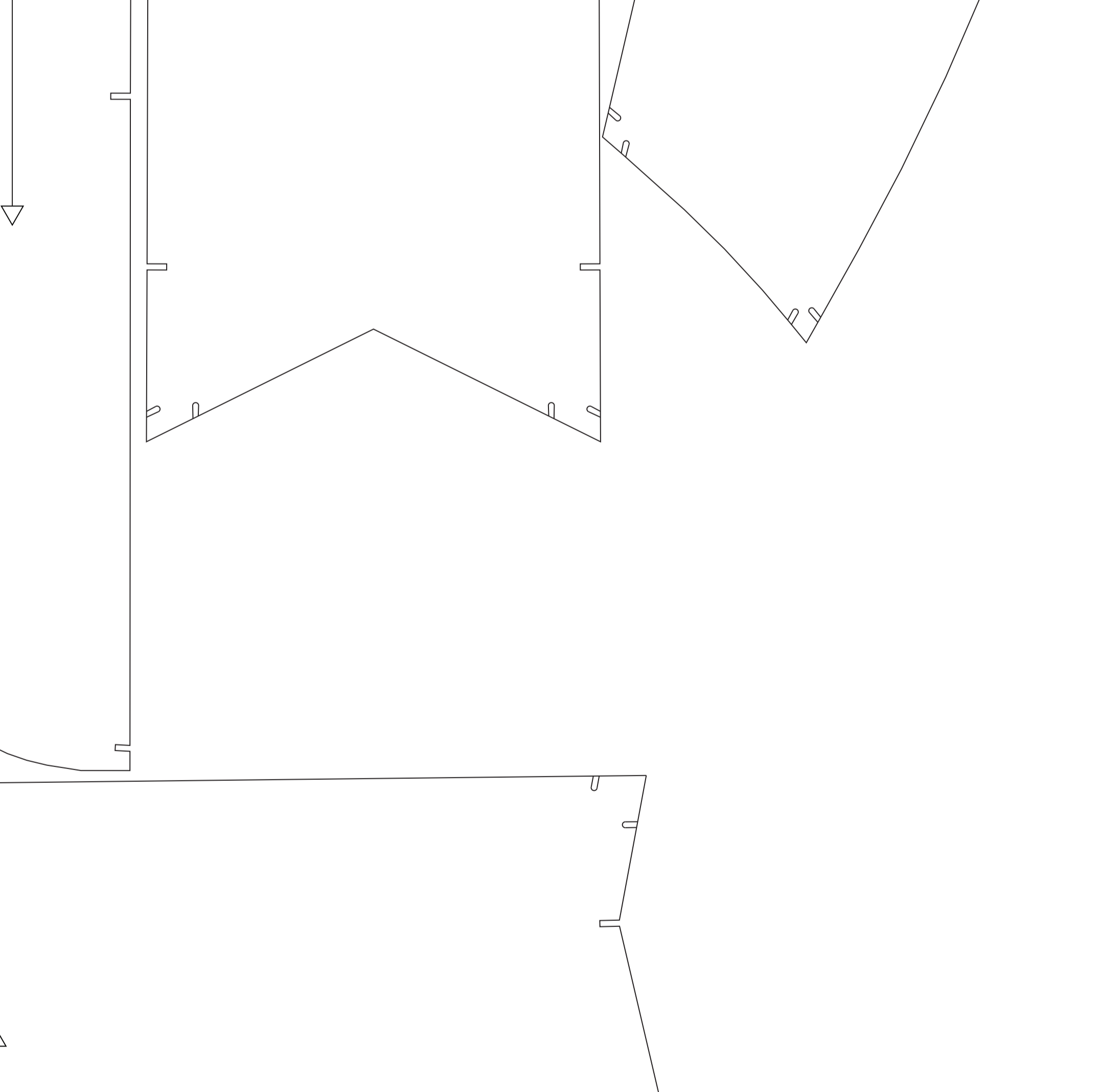
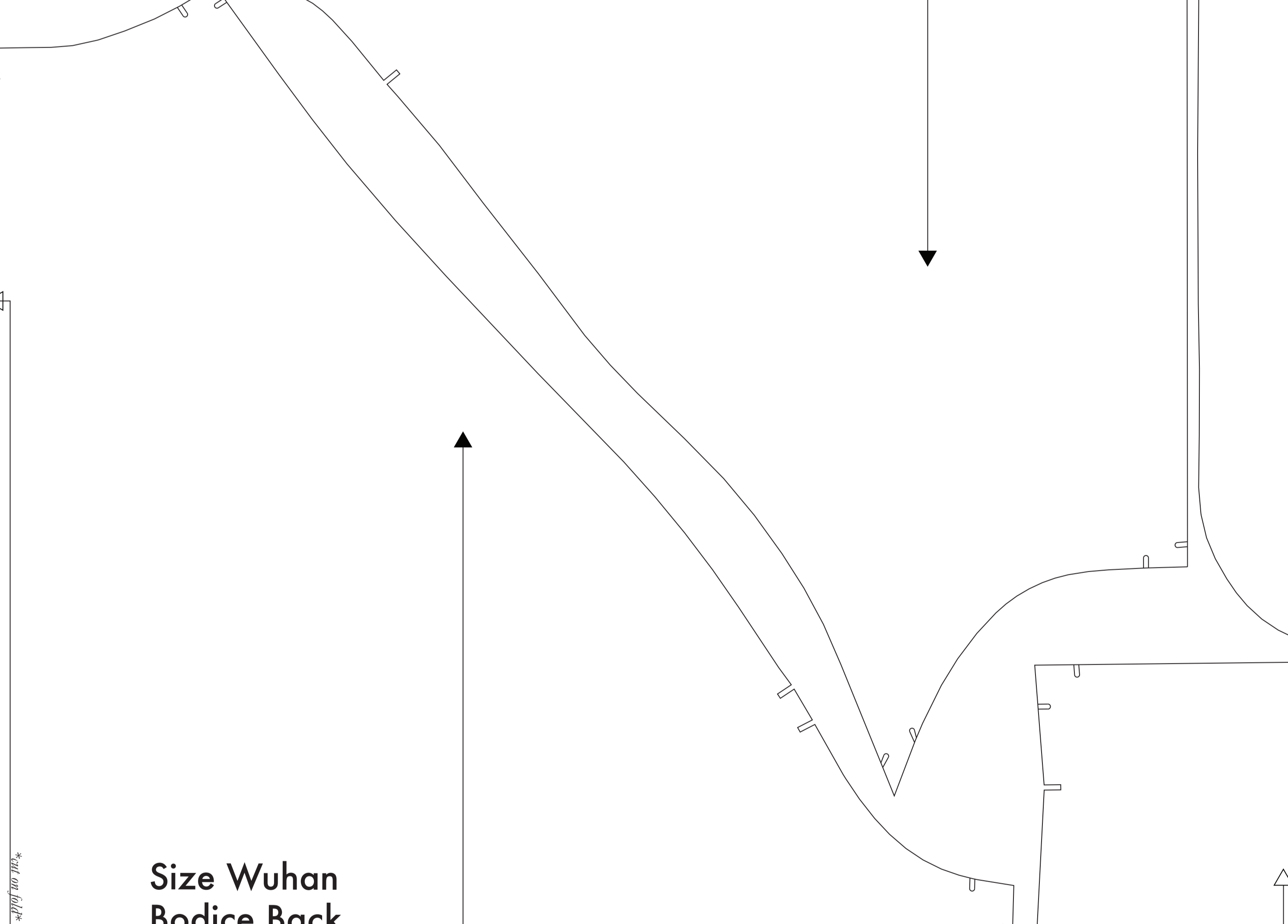
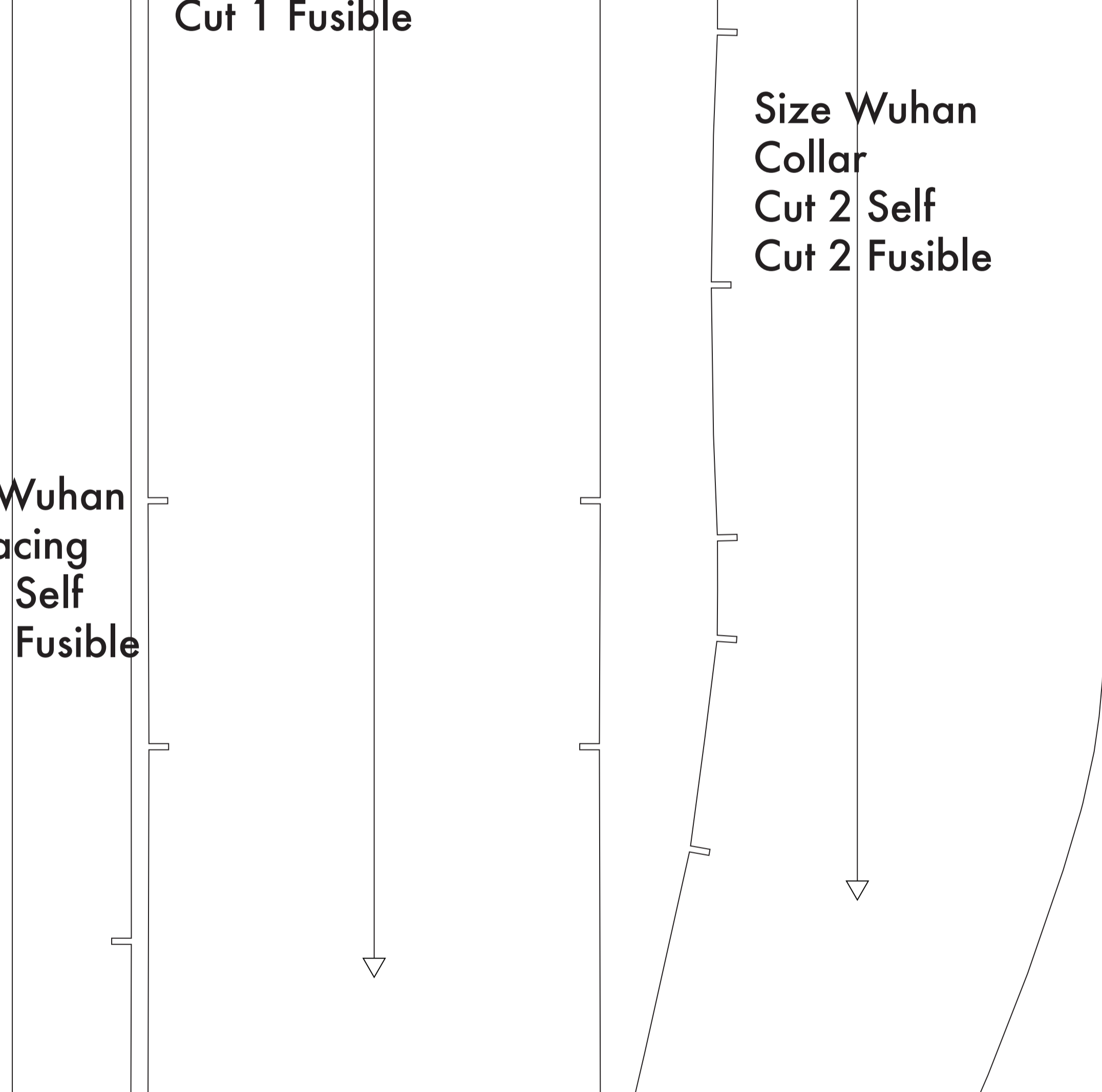
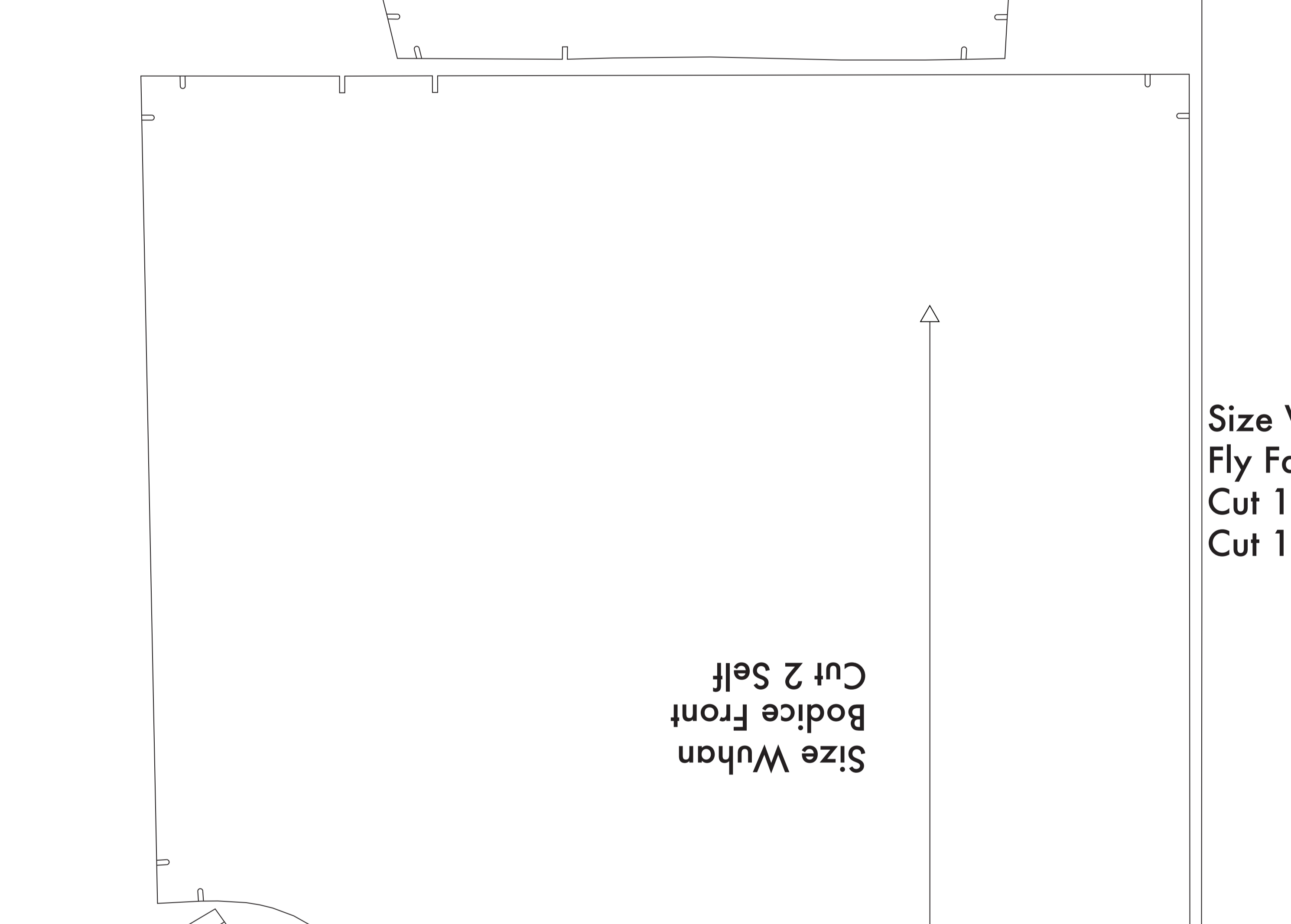
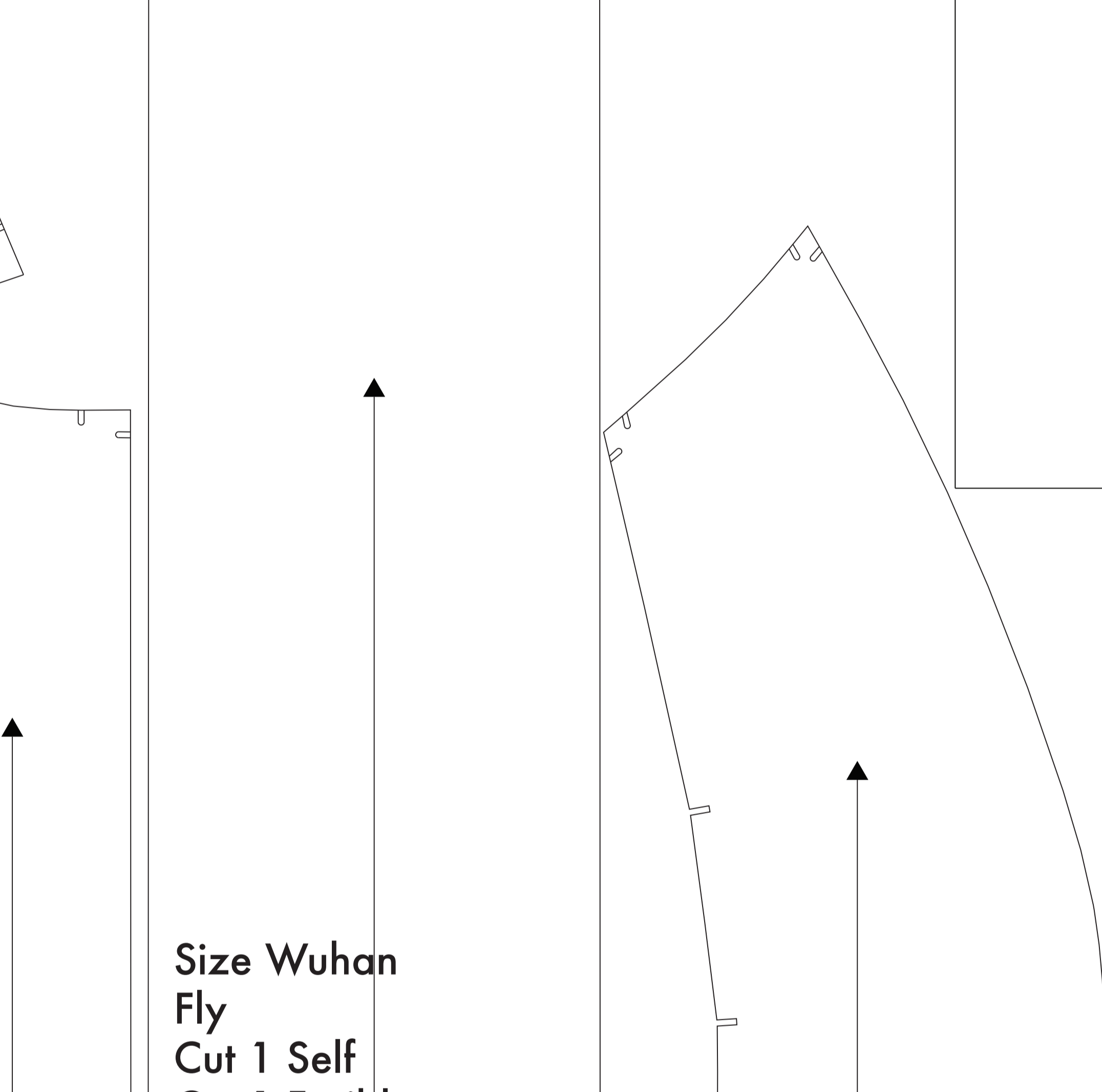
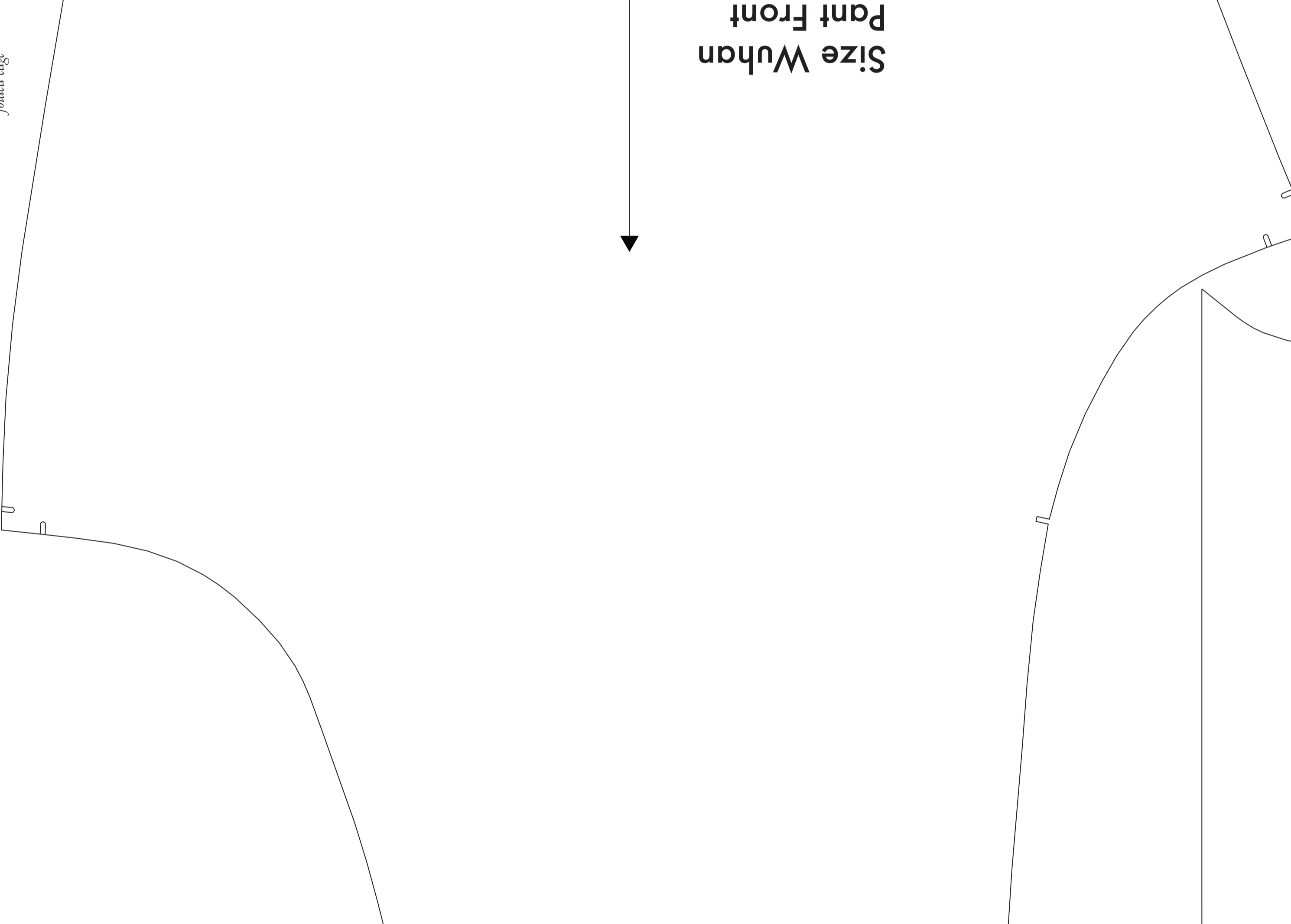
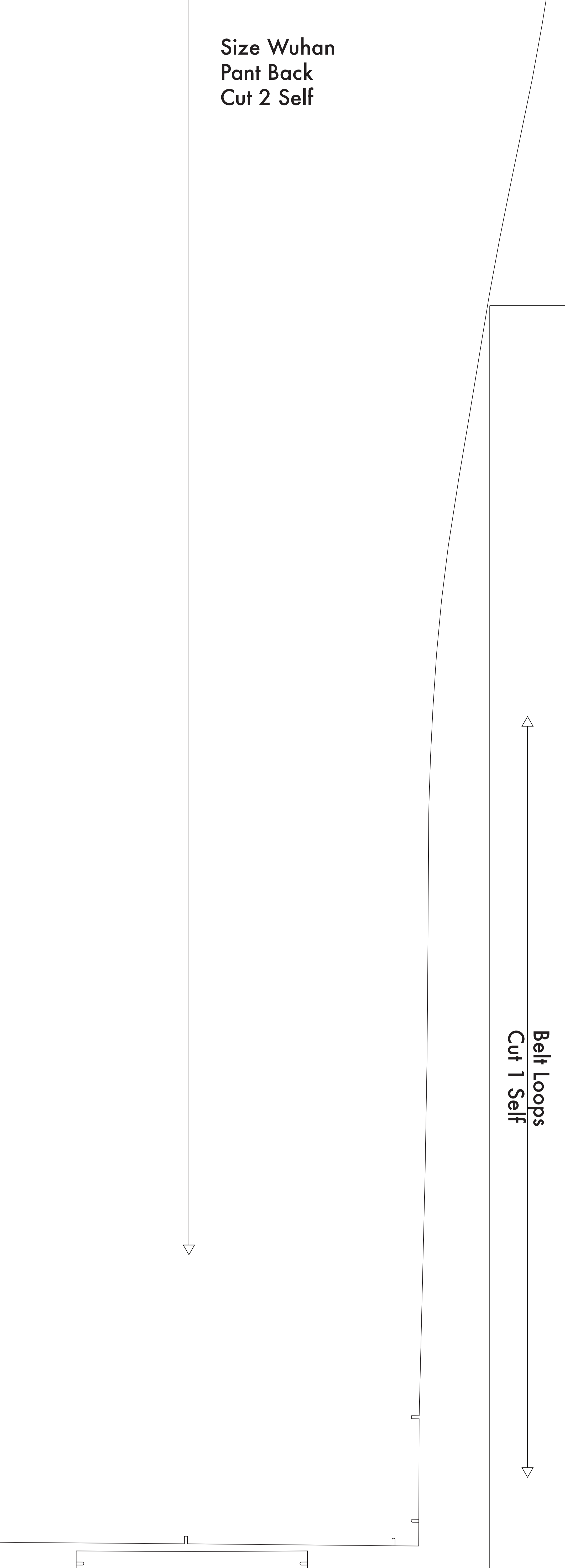
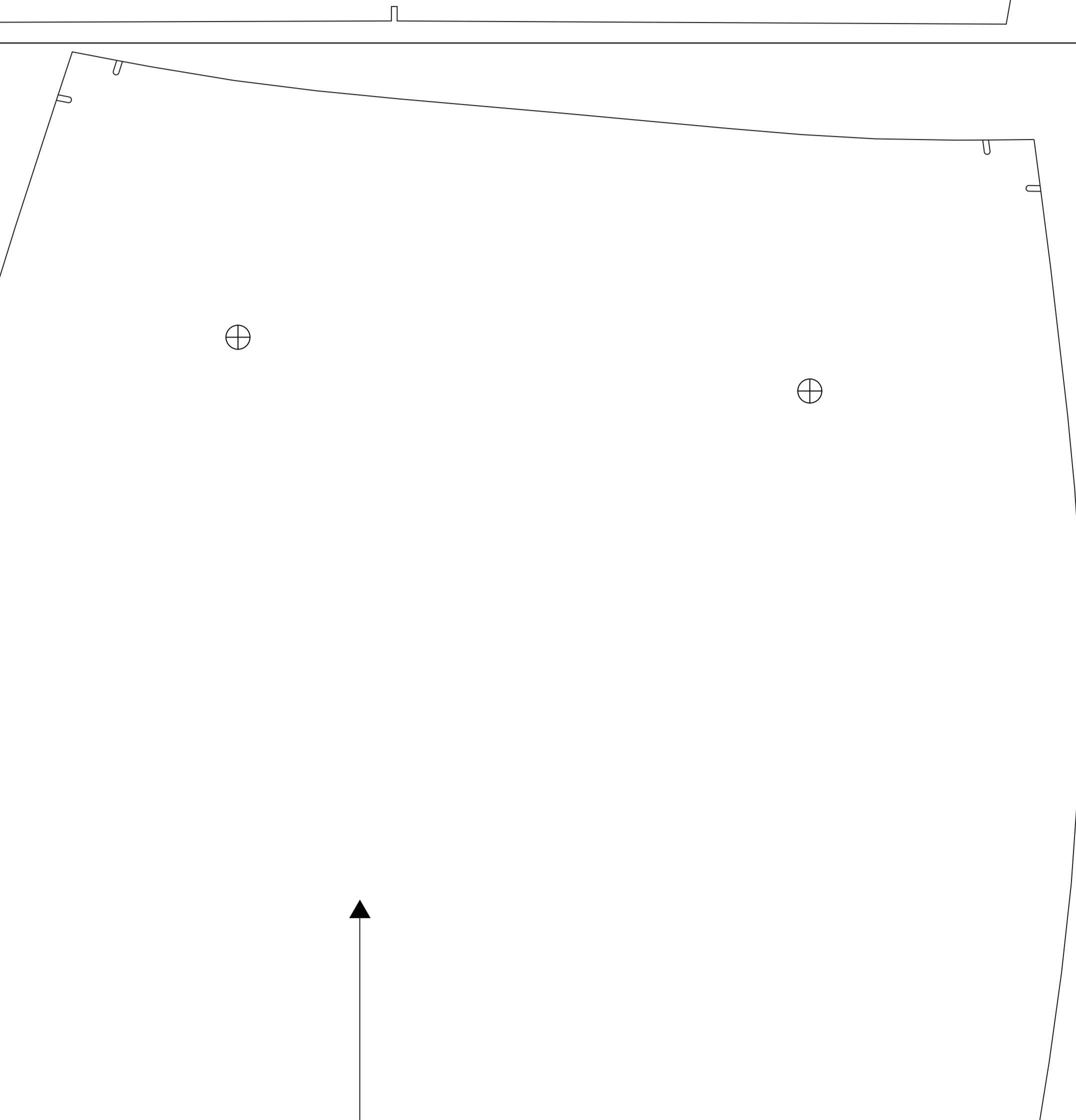
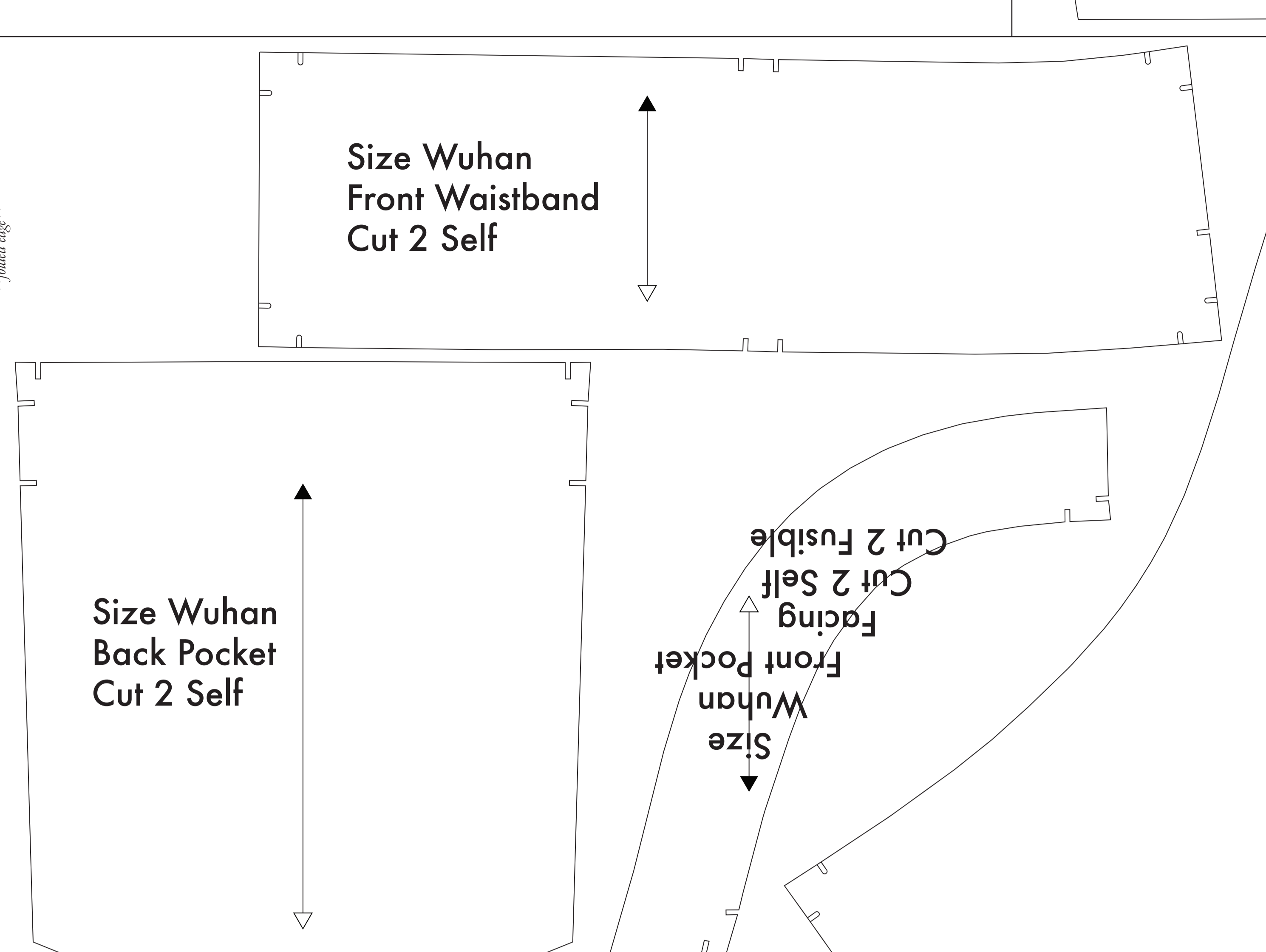
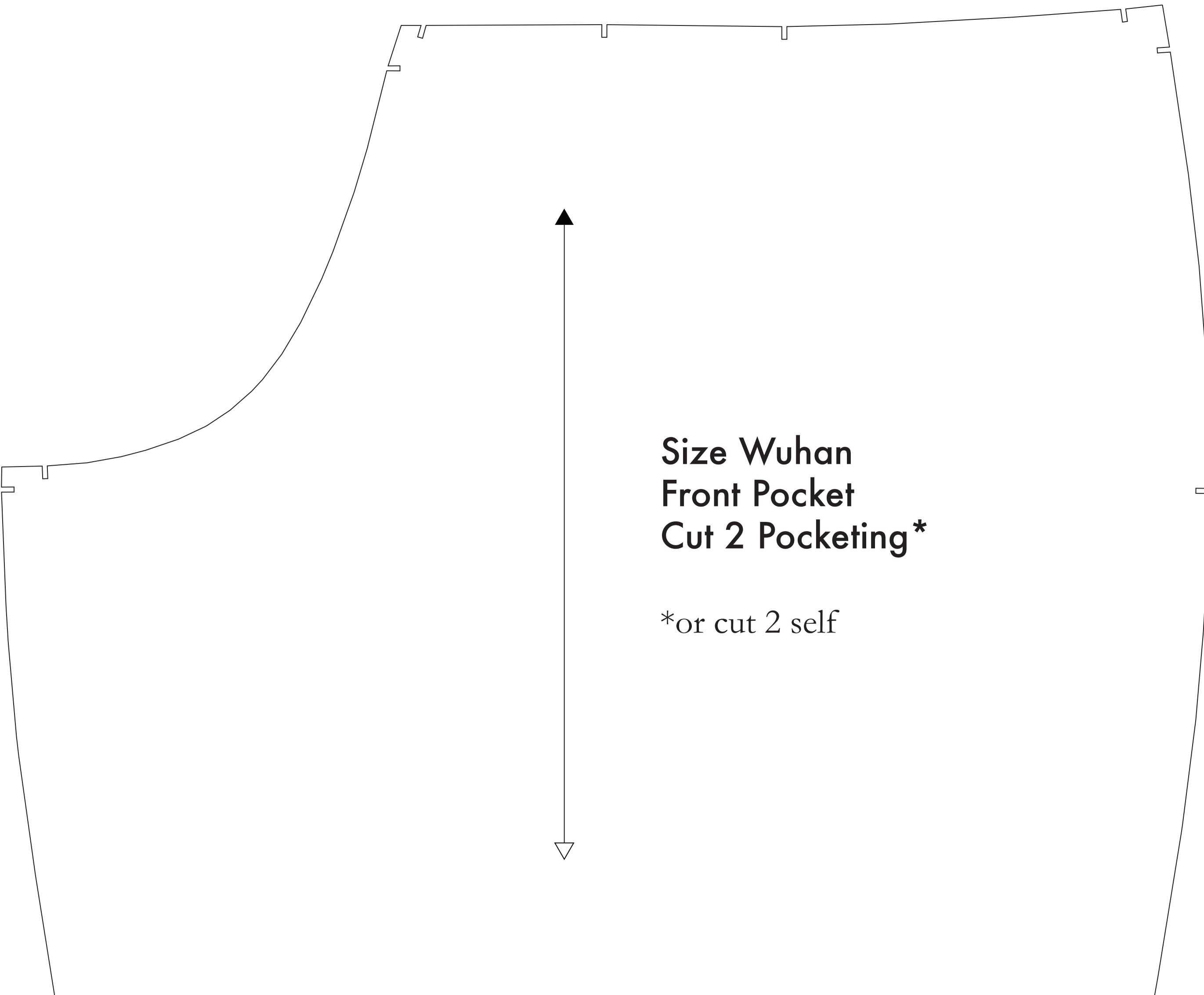
- SUPPLIES NEEDED**
- 3 1/4 YARDS OF 54" WIDE FABRIC
 - **SHARP SCISSORS**
 - **REMOVABLE MARKING MEDIUM** (chalk, wax, tailor's tack, etc.)
 - 1/2" "NO-SERPENTING" ZIPPER
 - **THREAD**
 - **SEWING MACHINE**
optional:
 - 1/2 YARD OF THINNER POCKET FABRIC
 - **FUSIBLE INTERFACING**

- CUTTING INSTRUCTIONS**
- Print pattern. You can print this document sheet on sheets of standard size paper and tape the pieces together, or print on a wide-format printer (36" or wider). Print sheets offer this service for approximately \$12. If available to you, the REDS recommended wide-format printing.
 - Once your pattern is printed, cut along the outermost rectangle to remove any excess paper. This template should fit exactly on a 54" wide or longer piece of fabric that has been folded in half. If your fabric is less than 54" wide, see **NOTE A**. For maximum fold the pattern is laid out flat; fabric that does not have a direction. For fabric with a nap, such as velvet or corduroy or fabric with a clear directional print see **NOTE B**.
 - Hold your fabric in half along the long-edge grain matching selvage edge to selvage edge. School in the self-finished edge of fabric. This narrow border keeps the fabric from unraveling or fraying. Often it has an edge that matches the top edge, though not as frequently, clearly finished top will be found. Avoid the edge in your cut piece as the texture frequently differs from the main body of the fabric.
 - Trace the paper template on top your fabric, matching the folded edge of the fabric with the side of the paper marked "folded edge."
 - Place pins throughout the template pinning together both layers of fabric as well as the paper.
 - Pin around the perimeter of each piece.
 - Leaving the pins in place, you will need need to snip each of the notches, taking care to not snip beyond the end of the 1/4" depth.
 - Notches are only 1/4" depth markings that are found throughout the pattern.*
 - Trace and/or outline your fabric with chalk, wax or tailor's tape and use as a guide for cutting.
 - Trace the pattern onto your fabric, marking the corner of each cut hole with chalk, wax or other removable, non-permanent mark. A tailor's tack may also be used.
 - This marker will help you, or marking, are indicated by the following symbols:*
 - OPTIONAL 1/2" (1/4" fusible interfacing pieces) see NOTE C** For more info: Pattern pieces that use fusible will be marked with the direction "Cut 1 Fusible" or "Cut 2 Fusible". These pieces are: the Collar, Fly, Fly Facing, Front Pocket Facing, and Front Pocket Backing. To cut the fusible, lay the material down with the glue side facing up, then place your pattern down and cut around the perimeter of each piece and notch.
 - Use the Front Pocket Bag cut of a lighter weighting material. If you are not using a pocketing material, then the Front Pocket Bag may be cut alongside your other pattern pieces. Pocketing is used in such as use of lighter material - You will find an example of pocketing on any part of this page.

NOTE A: FABRIC LESS THAN 54" WIDE
If your fabric is less than 54" wide, you will need to cut multiple pieces of fabric. From a paper template, determine where to cut the fabric along your piece of fabric. Mark the paper template with a pencil or chalk. The width of your fabric will determine how many pieces you will need. The width of your fabric will determine how many pieces you will need. The width of your fabric will determine how many pieces you will need.

NOTE B: FABRIC WITH NAP OR DIRECTIONAL PATTERN
For fabric with a nap, velvet or corduroy or fabric with a clear directional print, use a directional pattern. This will ensure the nap or direction of the fabric is consistent throughout the garment. For fabric with a directional pattern, use a directional pattern. This will ensure the nap or direction of the fabric is consistent throughout the garment.

NOTE C: USING FUSIBLE INTERFACING
Fusible interfacing is used to give the garment strength, and fabric cover pieces a pattern. While the use of fusible interfacing is optional, the Recommended Sewing Instructions light to medium weight fusible is recommended for the construction of JUMPSUIT.



Before cutting your fabric measure this square to make sure that the pattern is scaled correctly.*

*Some printers and software will automatically scale the pattern to fit the page.

The inner square should measure 4" x 4"

The outer square should measure 12cm x 12cm

Belt Loops Cut 1 Self