



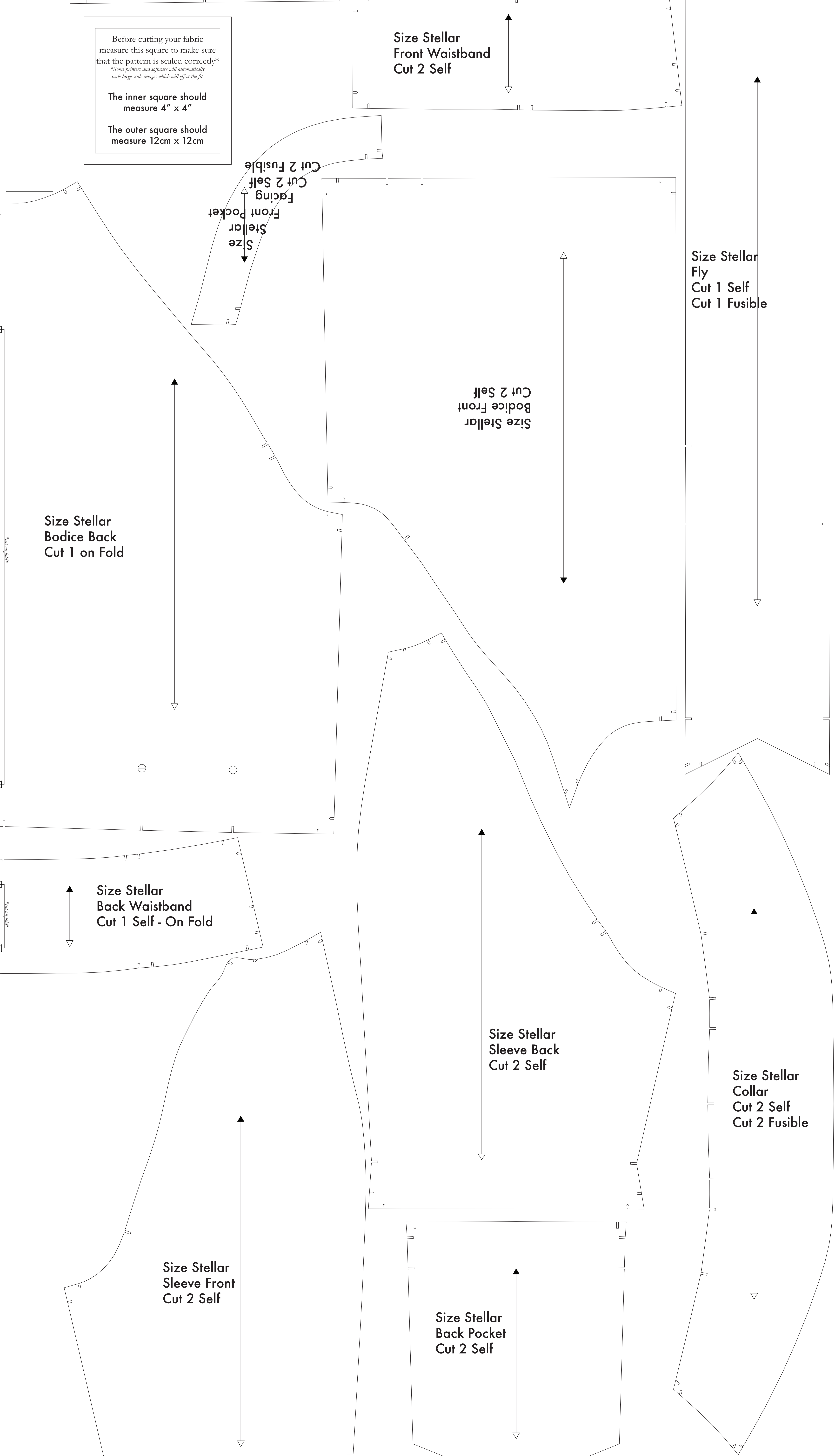
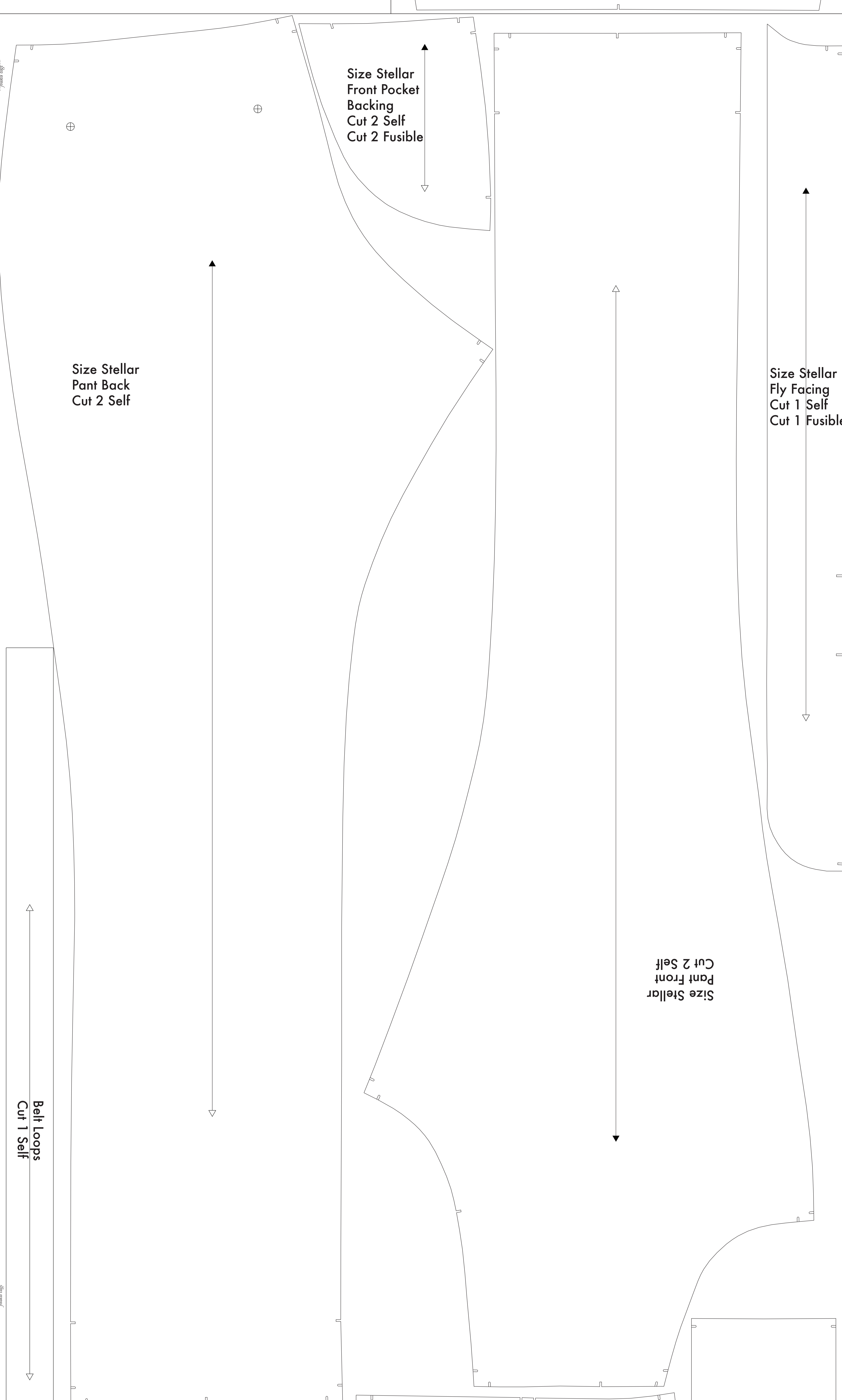
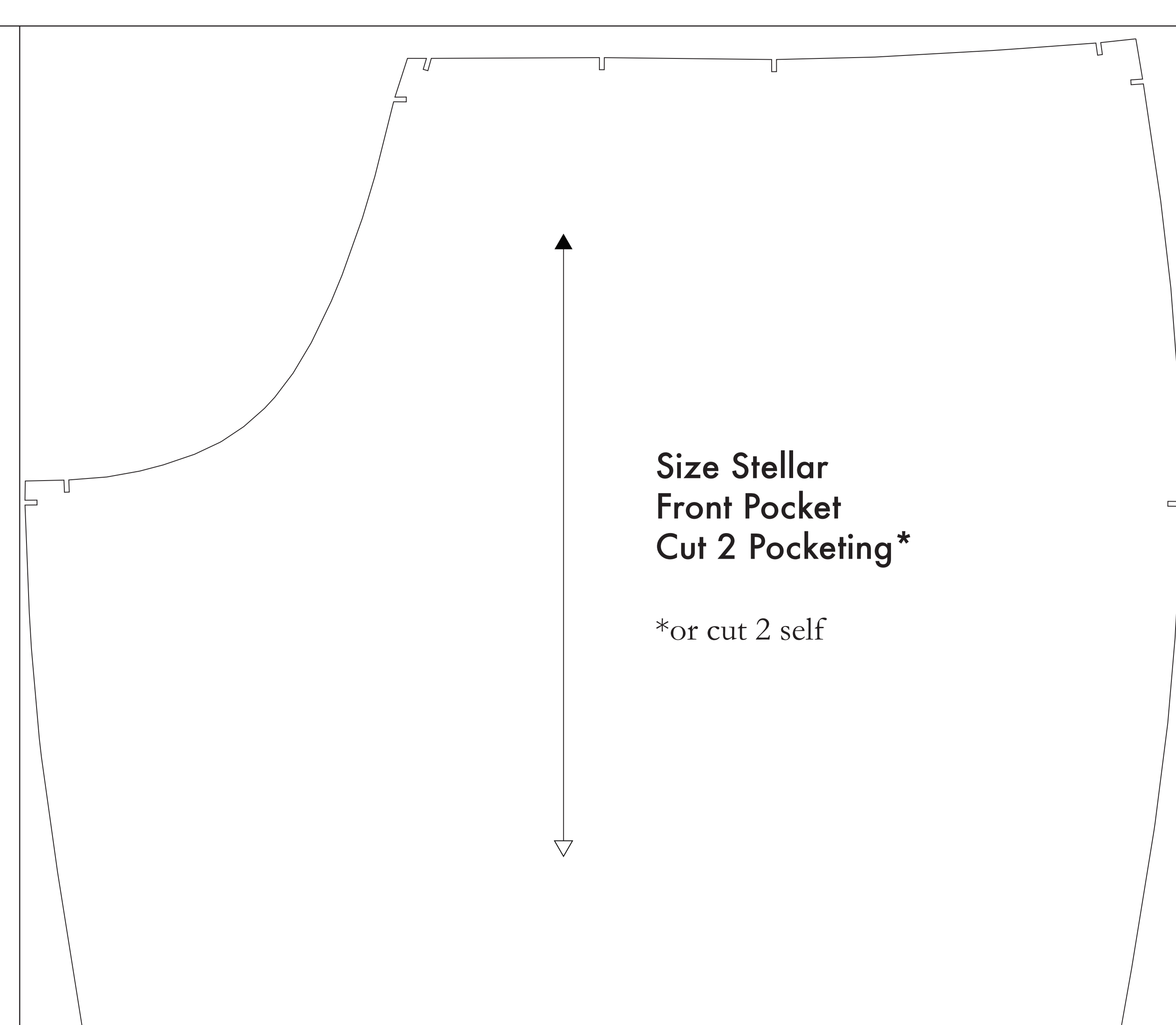
- SUPPLIES NEEDED**
- 3 YARDS OF 54" WIDE FABRIC
  - SHARP SCISSORS
  - REMOVABLE MARKING MEDIUM (chalk, wax, tailor's rock, etc.)
  - 1, 26" NON-SEPARATING ZIPPER
  - SEWING MACHINE
- OPTIONALS**
- 1/2 YARD OF THINNER POCKET FABRIC
  - FUSIBLE INTERFACING

- CUTTING INSTRUCTIONS**
1. Print pattern. You can print this document (and on sheets of standard size paper and tape the pieces together, or print on a wide-format printer (36" or wider). Print sheets offer this service for approximately \$12. If available to you, the B2B overmills wide-format printing.
  2. Once your pattern is printed, cut along the contour markings to remove any excess paper. This template should fit exactly on a 54" wide or larger piece of fabric that has been folded in half. If your fabric is less than 54" wide, use **NOTE A**. For maximum yield this pattern is laid out for fabric that does not have a direction. For fabric with a grain, such as where the cut of fabric with a clear directional grain, **NOTE B**.
  3. Fold your fabric in half along the lengthwise grain matching shoulder edge to shoulder edge. Shoulder is the self-finished edge of fabric. This narrow border keeps the fabric from unraveling or fraying. Often it has an edge that resembles raw fringe, though just as frequently, a clearly finished line will be found. Avoid this edge in your cut pieces as the texture frequently differs from the main body of the fabric.
  4. Place the paper template on top of your fabric, matching the folded edge of the fabric with the side of the paper marked "Shoulder Edge".
  5. Place pins throughout the template pinning together both layers of fabric as well as the paper.
  6. Cut around the perimeter of each piece.
  7. Leaving the pins in place, you will need to strip each of the notches, taking care to not strip beyond the end of the 1/4" depth.

**NOTE A: FABRIC LESS THAN 54" WIDE**  
 If your fabric is less than 54" wide, you will need to cut with reference to a directional grain. Trace the paper markings and transfer to your fabric. Mark the paper markings and transfer to the fabric. Do not cut until you have marked the fabric. Do not cut until you have marked the fabric. Do not cut until you have marked the fabric.

**NOTE B: FABRIC WITH NAPO**  
**DIRECTIONAL PATTERN**  
 Cut fabric with a directional grain or cutting fabric with a clear directional grain. Do not mark the paper markings and transfer to the fabric. Do not cut until you have marked the fabric. Do not cut until you have marked the fabric.

**NOTE C: USING FUSIBLE INTERFACING**  
 Fusible interfacing is a material that is used to stabilize, strengthen, and shape fabric pieces in a garment. While the use of fusible interfacing is optional, the Recommended Fusible Interfacing is highly recommended to ensure that the fabric maintains its shape and structure throughout the wear of the jumpsuit.



Before cutting your fabric measure this square to make sure that the pattern is scaled correctly\*

\*Some printers and software will automatically scale large scale images which will affect the fit.

The inner square should measure 4" x 4"

The outer square should measure 12cm x 12cm