

SUPPLIES NEEDED

- 1 1/2 YARDS OF 54" WIDE FABRIC
- SHEARS/SCISSORS
- REMOVABLE MARKING MEDIUM (chalk, wax, tailor's block, etc.)
- 1 - 26" NON-SEPARATING ZIPPER
- THREAD
- SEWING MACHINE (optional)
- 1/2 YARD OF THINNER POCKET FABRIC (optional)

CUTTING INSTRUCTIONS

1. Print pattern. You can print this document tiled on sheets of standard size paper and tape the pieces together, or print on a wide-format printer (24" or wider). Print sharp; after this service has approximately 30%. If available to you, the RFP recommends using former printing.
2. Check your pattern is printed, and check the measurement markings to ensure any excess paper. This template should fit squarely on a 54" wide or larger piece of fabric that has been folded in half. If your fabric is less than 54" wide, see **NOTE A**. For maximum width, the pattern is laid out flat; fabric that does not have a direction. For fabric with a nap, such as velvet or corduroy or fabric with a clear directional print, use the following: **NOTE B**.
3. Fold your fabric in half along the lengthwise grain matching selvage edge to selvedge edge. Schedule in the self-finished edge of fabric. The narrow leader keeps the fabric from unraveling or fraying. Office 2 has an edge that matches the edge through the top or bottom, or clearly finished line will be found. Avoid this edge to use as pieces as the texture frequently differs from the main body of the fabric.
4. Place the paper template on top of your fabric, matching the folded edge of the fabric with the side of the paper marked "folded edge".
5. Place pins throughout the template pinning together both layers of fabric as well as the paper.
6. Cut around the perimeter of each piece.
7. Laying the pieces flat, you will need to cut each of the neck, taking care to not cut beyond the end of the U-shape!

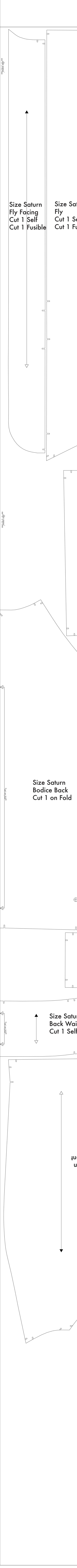
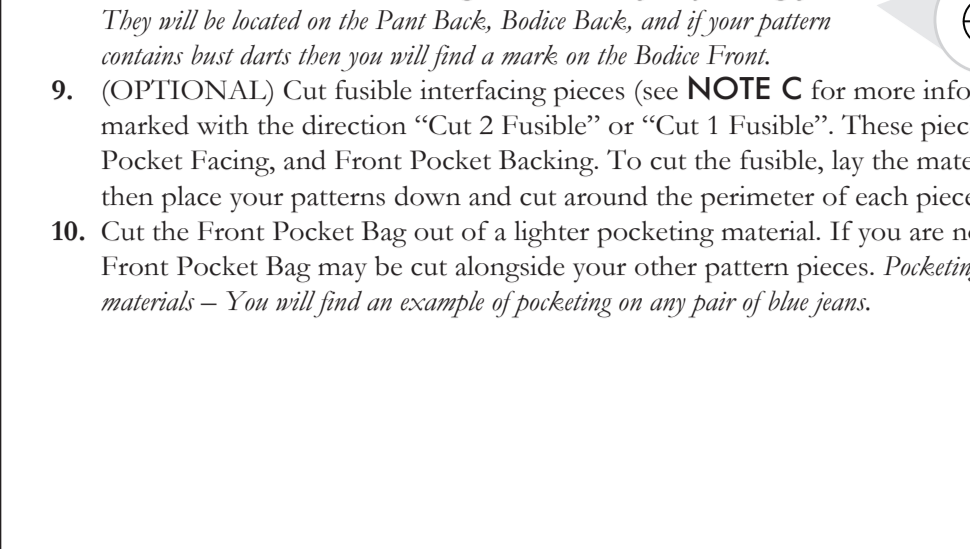
FUSIBLE INTERFACING

1. Mark all fusible interfacing pieces that are listed throughout the pattern.
2. Some pieces include seam allowance tabs, which allow you to help you fit up your pieces with ease.
3. Mark all fusible interfacing pieces, or marking, are indicated by the following symbol:
4. Your pattern will include seam allowance tabs, which allow you to help you fit up your pieces with ease.

NOTE A: FABRIC LESS THAN 54" WIDE
If your fabric is less than 54" wide, you will need to cut your pieces from the fabric in two sections. The pattern pieces are designed to be cut from a single piece of fabric. To cut your pieces from two sections, you will need to cut the pieces from the fabric in two sections. The pattern pieces are designed to be cut from a single piece of fabric. To cut your pieces from two sections, you will need to cut the pieces from the fabric in two sections.

NOTE B: FABRIC WITH NAP OR DIRECTIONAL PATTERN
For fabric with a nap or directional pattern, or a directional pattern, you will need to cut the pieces from the fabric in two sections. The pattern pieces are designed to be cut from a single piece of fabric. To cut your pieces from two sections, you will need to cut the pieces from the fabric in two sections.

NOTE C: USING FUSIBLE INTERFACING
Fusible interfacing is a material that is used to stiffen, strengthen, and stabilize your pattern pieces. When the interfacing is applied to your pattern pieces, it will provide additional support and structure to the pieces.



Before cutting your fabric measure this square to make sure that the pattern is scaled correctly*
*Some printers and software will automatically scale images which will affect the fit.
 The inner square should measure 4" x 4"
 The outer square should measure 12cm x 12cm

