

- SUPPLIES NEEDED**
- 3 1/4 YARDS OF 54" WIDE FABRIC
  - REMOVABLE MARKING MEDIUM (chalk, wax, tailor's task, etc.)
  - 1 1/2" INCHES POKETING ZIPPER
  - THREAD
  - SEWING MACHINE
- optional:
- 1/2 YARD OF THINNER POCKET FABRIC
  - FUSIBLE INTERFACING

**CUTTING INSTRUCTIONS**

1. Print pattern. You can print this document on sheets of standard size paper and tape the pieces together, or print on a wide format printer (36" or wider). Print sheets offer this service for approximately \$12. If available to you, the BHS recommends wide format printing.
2. Check your pattern is printed, and check the convenient markings to remove any excess paper. This template should fit exactly on a 54" wide or larger piece of fabric that has been folded in half. If your fabric is less than 54" wide, see **NOTE A**. For maximum width, the pattern is laid out for fabric that does not have a direction. For fabric with a nap, such as velvet or corduroy, or fabric with a clear directional print, see **NOTE B**.
3. Fold your fabric in half along the length to create a matching side-to-side edge to allow the edge. Schedule in the self finished edge of fabric. The narrow hems keep the fabric from unraveling or fraying. Once it has an edge that matches the other edge, you can separate a clearly finished line will be formed. Along this edge, you can separate pieces in the center frequently differs from the main body of the fabric.
4. Place the paper template on top of your fabric, matching the folded edge of the fabric with the side of the paper marked "fold edge".
5. Trace the pattern pieces onto your fabric, marking the folded edge of the fabric with the side of the paper marked "fold edge".
6. Cut around the perimeter of each piece.
7. Leaving the grain reference line will allow you to strip each of the pieces, taking care to not strip beyond the end of the "U" shape!

**NOTE A: FABRIC LESS THAN 54" WIDE**

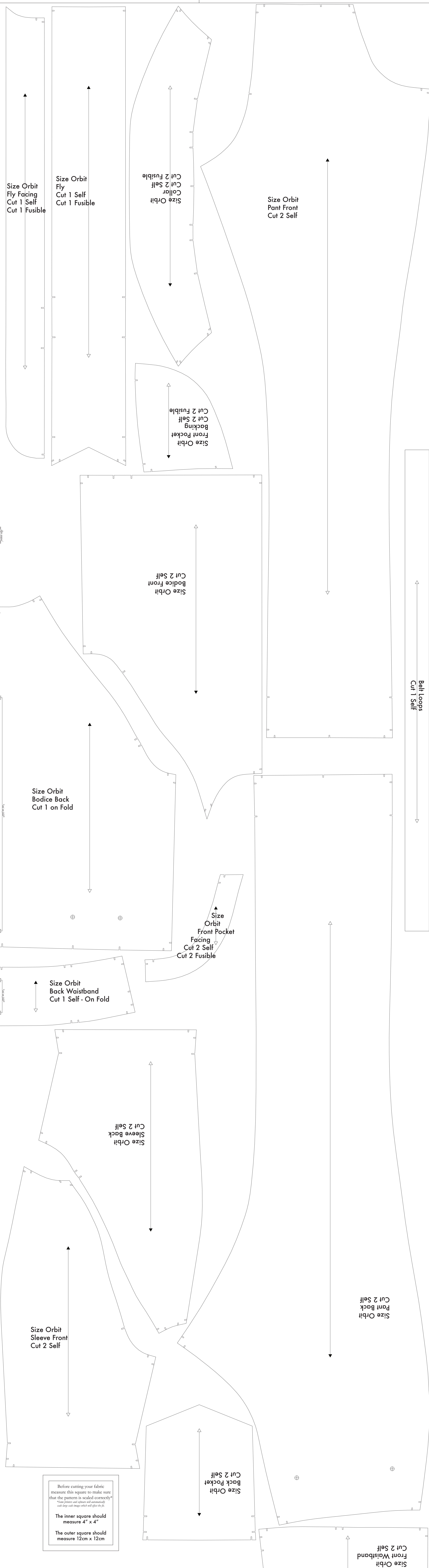
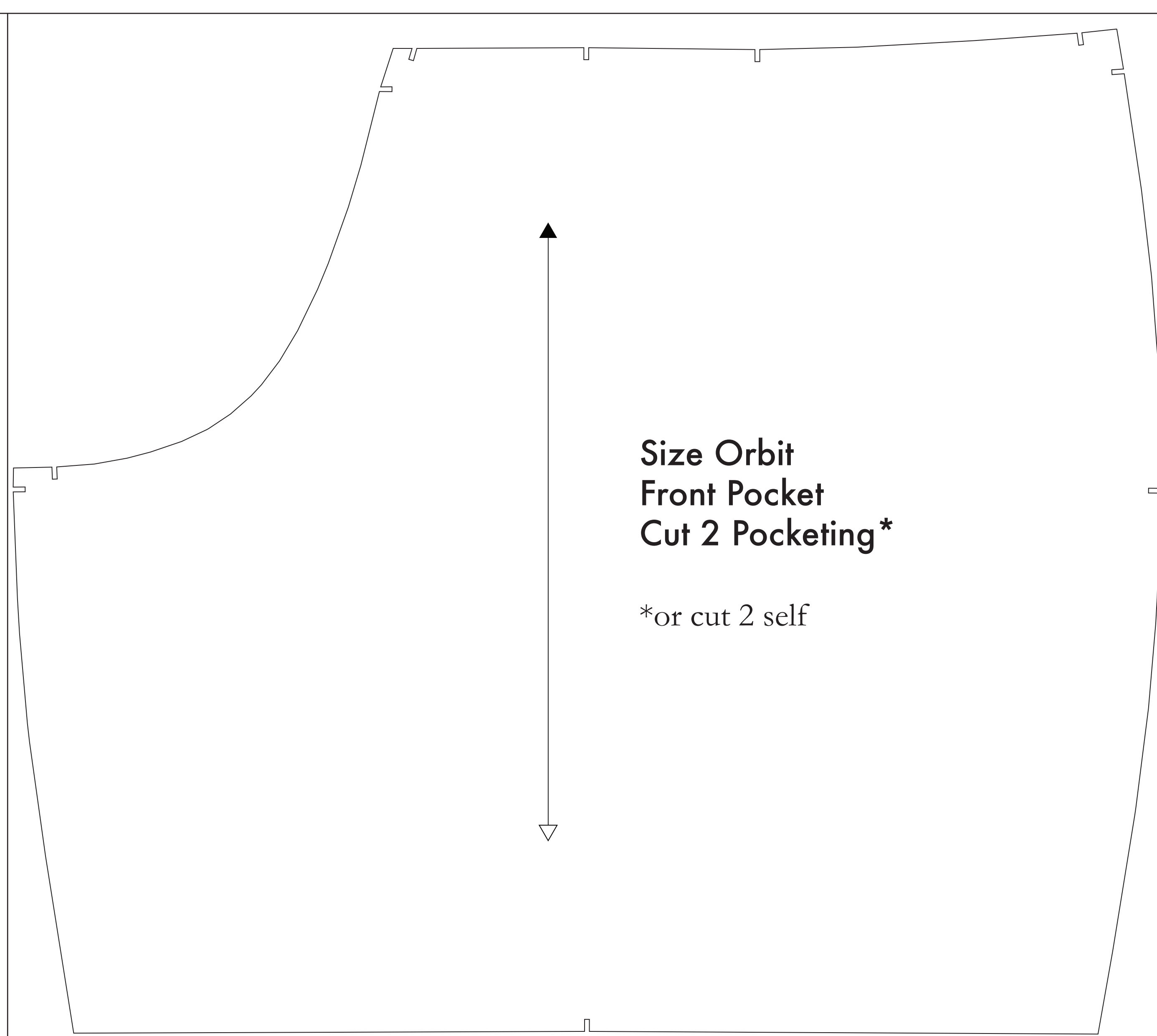
If your fabric is less than 54" wide you will need to cut and piece your fabric. Mark the paper template and make a line on your fabric along your pattern and piece your fabric into sections to replicate the pattern piece to the best of your ability. The quantity mentioned and provided are all calculated and assume you are using one 54" wide fabric piece. The markings that are on the paper are for one 54" wide fabric piece. These lines indicate the direction of grain of the fabric. When using a nap fabric, you will need to piece your fabric into sections to replicate the pattern piece to the best of your ability. The quantity mentioned and provided are all calculated and assume you are using one 54" wide fabric piece. The markings that are on the paper are for one 54" wide fabric piece. These lines indicate the direction of grain of the fabric. When using a nap fabric, you will need to piece your fabric into sections to replicate the pattern piece to the best of your ability.

**NOTE B: FABRIC WITH NAP OR DIRECTIONAL PATTERN**

For fabric with a nap or directional pattern, fabric may have a directional pattern or the markings may be laid out in a specific way. If the pattern pieces are laid out in a specific way, you will need to cut the fabric into sections to replicate the pattern piece to the best of your ability. The quantity mentioned and provided are all calculated and assume you are using one 54" wide fabric piece. The markings that are on the paper are for one 54" wide fabric piece. These lines indicate the direction of grain of the fabric. When using a nap fabric, you will need to piece your fabric into sections to replicate the pattern piece to the best of your ability.

**NOTE C: USING FUSIBLE INTERFACING**

Using fusible interfacing is optional for your pattern pieces, and will help to stabilize the fabric and provide a crisp finish. It is not necessary to use fusible interfacing on all pieces. If you choose to use fusible interfacing, please refer to the manufacturer's instructions for the specific product you are using.



Before cutting your fabric measure this square to make sure that the pattern is scaled correctly!  
*\*Some printers and software will not automatically scale large size files.*

The inner square should measure 4" x 4"

The outer square should measure 12cm x 12cm