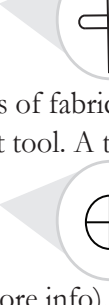


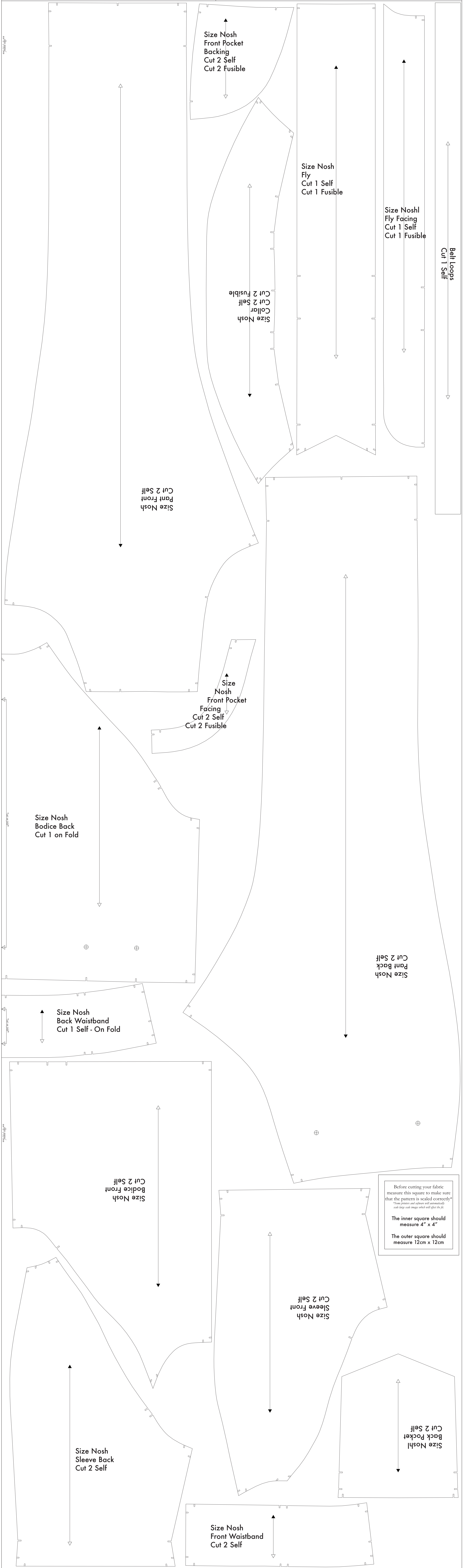
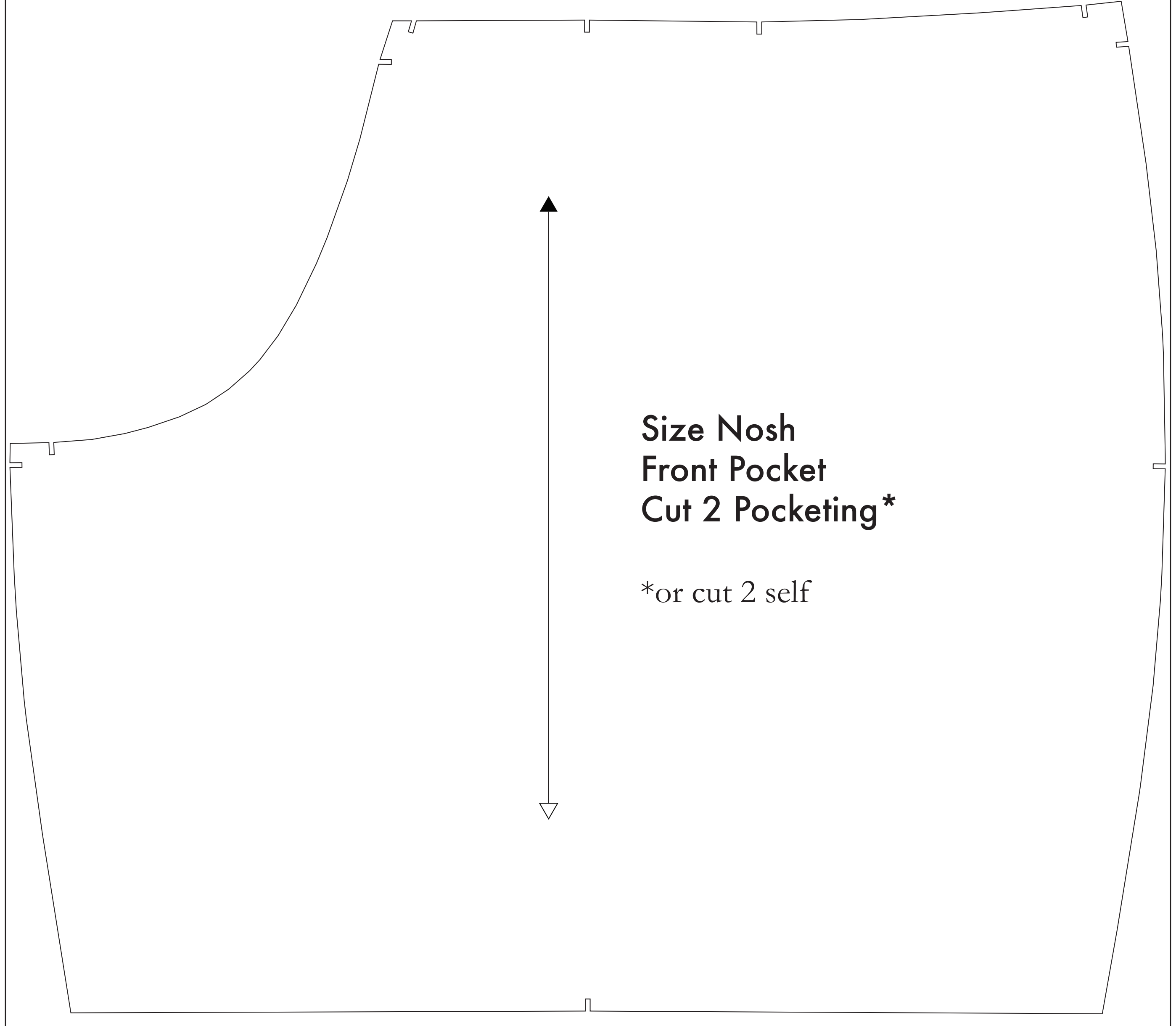
- SUPPLIES NEEDED**
- 3 YARDS OF 54" WIDE FABRIC
  - SHARP SCISSORS
  - REMOVABLE MARKING MEDIUM (chalk, wax, tailor's tuck, etc.)
  - THREAD
  - SEWING MACHINE
- OPTIONAL:**
- 1/2 YARD OF THINNER POCKET FABRIC
  - FUSIBLE INTERFACING

- CUTTING INSTRUCTIONS**
1. Print pattern. You can print this document (but on sheets of standard size paper) and tape the pieces together, or print on a wide-format printer (36" or wider). These sheets offer the same for approximately \$12. If available to you, the B2S recommends wide-format printing.
  2. Check your pattern is printed, cut along the outermost rectangle to remove any excess paper. This template should fit exactly on a 54" wide or larger piece of fabric that has been folded in half. If your fabric is less than 54" wide, see **NOTE A**. For measurement, add this pattern to laid out flat fabric that does not have a direction. For fabric with a nap, such as velvet or corduroy or fabric with a clear directional print, see **NOTE B**.
  3. Fold your fabric in half along the lengthwise grain matching sub-edge edge to sub-edge edge. Selvage in the self-finished edge of fabric. This narrow hemmer keeps the fabric from unraveling or fraying. Often this an edge that resembles fine fringe, though just as frequently, a clearly finished line will be found. Avoid this edge in your cut pieces as the texture frequently differs from the main body of the fabric.
  4. Place the paper template on top your fabric, matching the folded edge of the fabric with the side of the paper marked "folded edge".
  5. Place pins throughout the template pressing together both layers of fabric as well as the paper.
  6. Cut around the perimeter of each piece.
  7. Leaving the pins in place, you will need to snip each of the notches, taking care to not snip beyond the end of the U-shaped notch.
  8. Mark all inner drill holes. Using a pin, bring together both layers of fabric and the pattern, mark the corner of each drill hole with chalk, wax or other removable, non-permanent tool. A tailor's tack may also be used. These marker drill holes, or markings, are indicated by the following symbols:  
  
*They will be found on the Pant Back, Bodice Back, and your pattern pieces that have the jaw and jaw a mark on the Bodice Front.*
  9. **OPTIONAL:** Cut fusible interfacing pieces per **NOTE C** for more info. Pattern pieces that use fusible will be marked with the direction "Cut 2 Fusible" or "Cut 1 Fusible". These pieces are the Collar, Fly Facing, Front Pocket Facing, and Pant Pocket Backing. To use the fusible, lay the material down with the glue side facing up, then place your pattern down and cut around the perimeter of each piece and notch.
  10. Cut the Front Pocket by cut of a lighter pocketing material. If you are not using a pocketing material, then the Front Pocket Bag may be cut directly from other pattern pieces. *Pocketing is used to make look in case of thicker material - You will find an example of pocketing on any part of this jumpsuit.*

**NOTE A: FABRIC LESS THAN 54" WIDE**  
 If your fabric is less than 54" wide, you will need to cut each pattern piece individually from the paper template and paste these on your fabric. Make sure to measure the pattern pieces to fit your available width. The number measurements and positions are all marked on each pattern piece to ease this. To find the pocketing marking line for the single line with two arrows of either side. These lines follow the direction or grain of the fabric. When cutting fabric on your fabric, these lines should run parallel to the sub-edge edge of your fabric. To ensure that they are parallel measure the distance from the top piece piece to the edge of the fabric, then mark the same distance with the bottom arrow. When the top and bottom arrows are equidistant from the edge of your fabric, then the pattern piece is correctly positioned.

**NOTE B: FABRIC WITH NAP OR DIRECTIONAL PATTERN**  
 Use fabric with nap, such as velvet or corduroy, fabric with a clear directional print, or for marking steps such as drill holes will need to use the pattern pieces individually. Pay for them out on your fabric, ensuring that the sub-edge edge front and back pocketing pieces are in the same direction.

**NOTE C: USING FUSIBLE INTERFACING**  
 Fusible interfacing is a material that is used to reinforce, strengthen, and stabilize certain pieces in a garment. With the use of fusible interfacing is optional, the Rational Design recommends light to medium weight non-stretch or stretch fusible interfacing in the construction of JUMPSUIT.



Before cutting your fabric measure this square to make sure that the pattern is scaled correctly\*  
 \*Some printers and printers will automatically scale large scale images which will affect the fit.  
 The inner square should measure 4" x 4"  
 The outer square should measure 12cm x 12cm