

- SUPPLIES NEEDED**
- 1 1/4 YARDS OF 54" WIDE FABRIC
 - SHEARS/SCISSORS
 - REMOVABLE MARKING MEDIUM (chalk, wax, tailor's tack, etc.)
 - 1 - 26" NON-SEPARATING ZIPPER
 - THREAD
 - SEWING MACHINE (optional)
 - 1/2 YARD OF THINNER POCKET FABRIC (optional)

CUTTING INSTRUCTIONS

1. Print pattern. You can print this document (and on sheets of standard size paper and tape the pieces together, or print on a wide format printer (36" or wider). Please check after this service has approximately 30. If available to you, the RDS recommends wide format printing.
2. Check your pattern is printed, cut along the outermost rectangle to remove any excess paper. This template should be roughly a 18" x 36" or larger piece of fabric that has been folded in half. If your fabric is less than 54" wide, see **NOTE A**. The maximum width this pattern is flat out for fabric that also can have a direction. For fabric with a nap, such as velvet or corduroy or fabric with a clear directional print, see **NOTE B**.
3. Fold your fabric in half along the lengthwise grain matching selvage edge to selvage edge. Schedule in the self-finished edge of fabric. This narrow hem keeps the fabric from unraveling or fraying. When a hem is not at the selvage edge, it is not as strong as a hem at the selvage edge. A clearly finished hem will be found. Avoid this edge in your cut pieces as the texture frequently differs from the main body of the fabric.
4. Place the paper template on top of your fabric, matching the folded edge of the fabric with the side of the paper marked "folded edge."
5. Trace each through the template printing together both layers of fabric as well as the paper.
6. Cut around the perimeter of each piece.
7. Leaving the top 1" of fabric, you will need to strip each of the notches, taking care to not strip beyond the end of the 1" strip!
8. Mark all interior darts, notches, waist, or other notches, or reinforcement tool. A tailor's tack may also be used. Their center fold, or markings, are indicated by the following symbols:
 - ⊕ - do nothing, just cut along.
 - ⊙ - do nothing, just cut along.
 - ⊕ - do nothing, just cut along.
9. Mark all interior darts, notches, waist, or other notches, or reinforcement tool. A tailor's tack may also be used. Their center fold, or markings, are indicated by the following symbols:
 - ⊕ - do nothing, just cut along.
 - ⊙ - do nothing, just cut along.
 - ⊕ - do nothing, just cut along.
10. **OPTIONAL:** Cut fusible interfacing pieces (see **NOTE C** for more info). Pattern pieces that use fusible will be marked with the direction "Cut 2 Fusible" or "Cut 1 Fusible". These pieces are the Collar, Fly, Fly Facing, Front Pocket Facing, and Front Pocket Bagging. To cut the fusible, lay the material down with the grain side facing up, then place your pattern down and cut around the perimeter of each piece and notch.
11. Cut the Front Pocket Bagging out of a lighter pocketing material. If you are not using a pocketing material, then the Front Pocket Bagging can be cut straight from other pattern pieces. Pocketing a waist is a waist bag, or a collar material. - You will find an example of pocketing on any part of this page.

NOTE A: FABRIC LESS THAN 54" WIDE

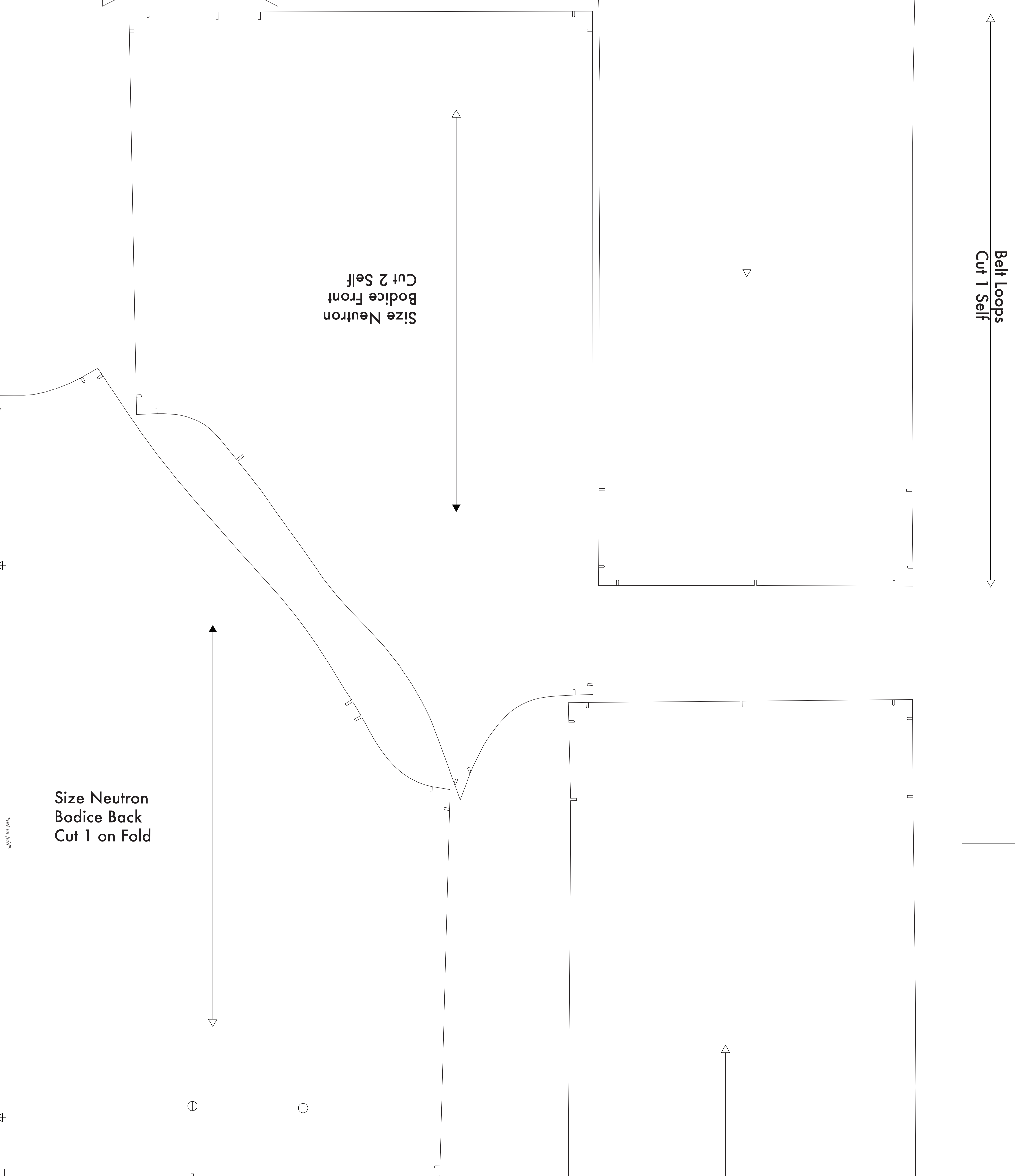
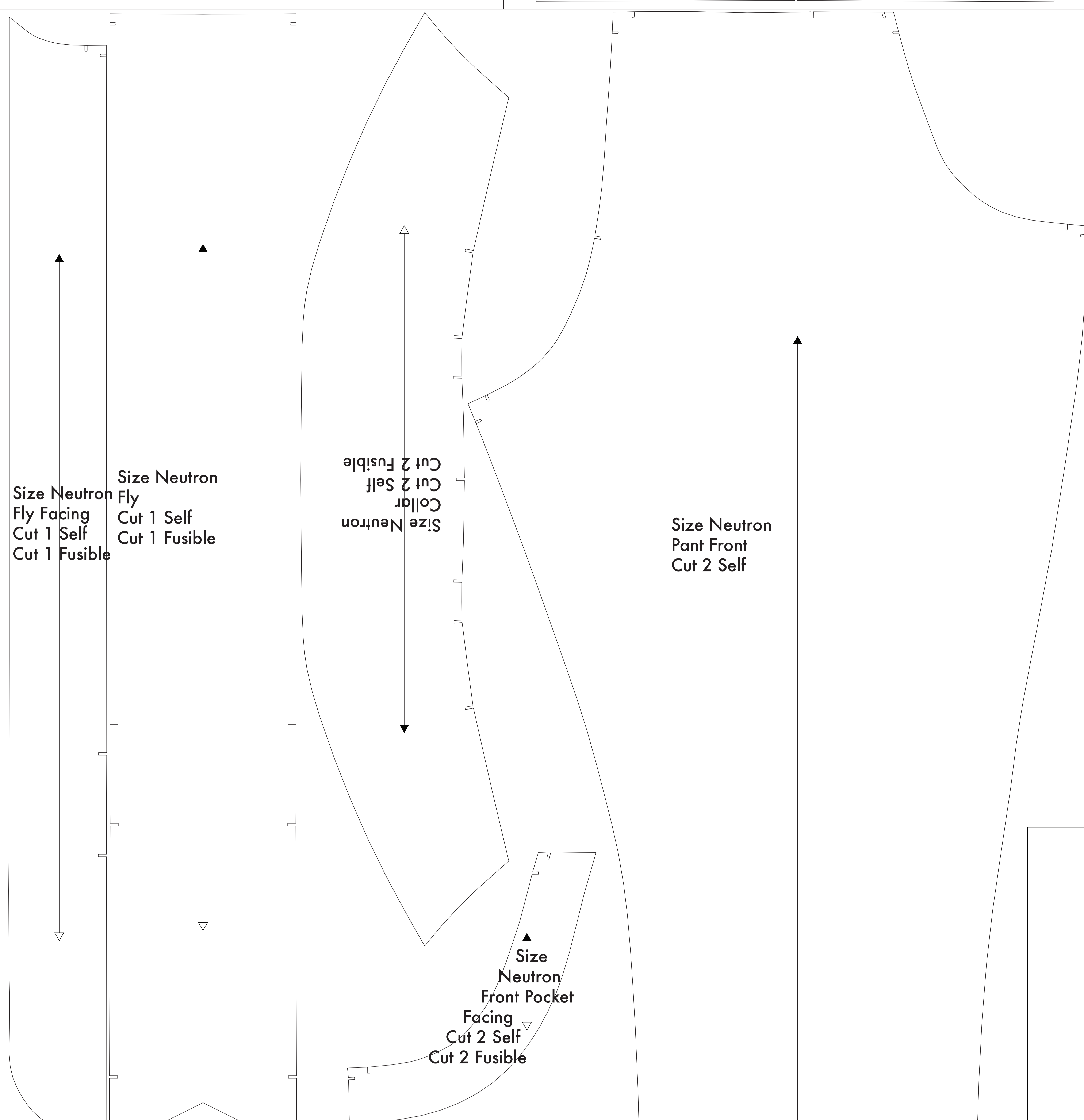
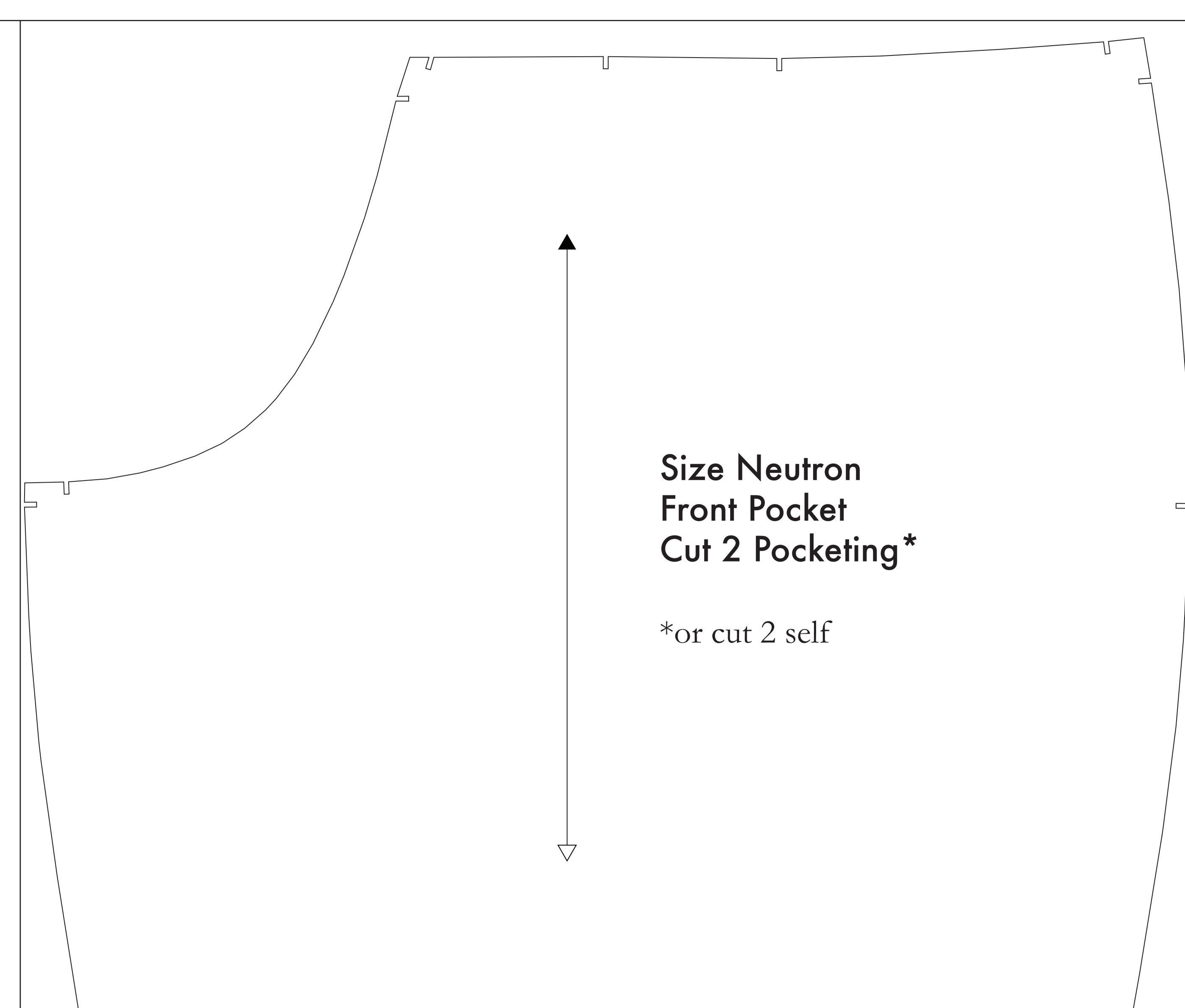
If your fabric is less than 54" wide, you will need to cut each pattern piece individually from the paper template and make a note on your fabric where you need to connect the pieces. The pieces should be cut along the outermost rectangle to remove any excess paper. This template should be roughly a 18" x 36" or larger piece of fabric that has been folded in half. If your fabric is less than 54" wide, see **NOTE A**. The maximum width this pattern is flat out for fabric that also can have a direction. For fabric with a nap, such as velvet or corduroy or fabric with a clear directional print, see **NOTE B**.

NOTE B: FABRIC WITH NAP OR DIRECTIONAL PATTERN

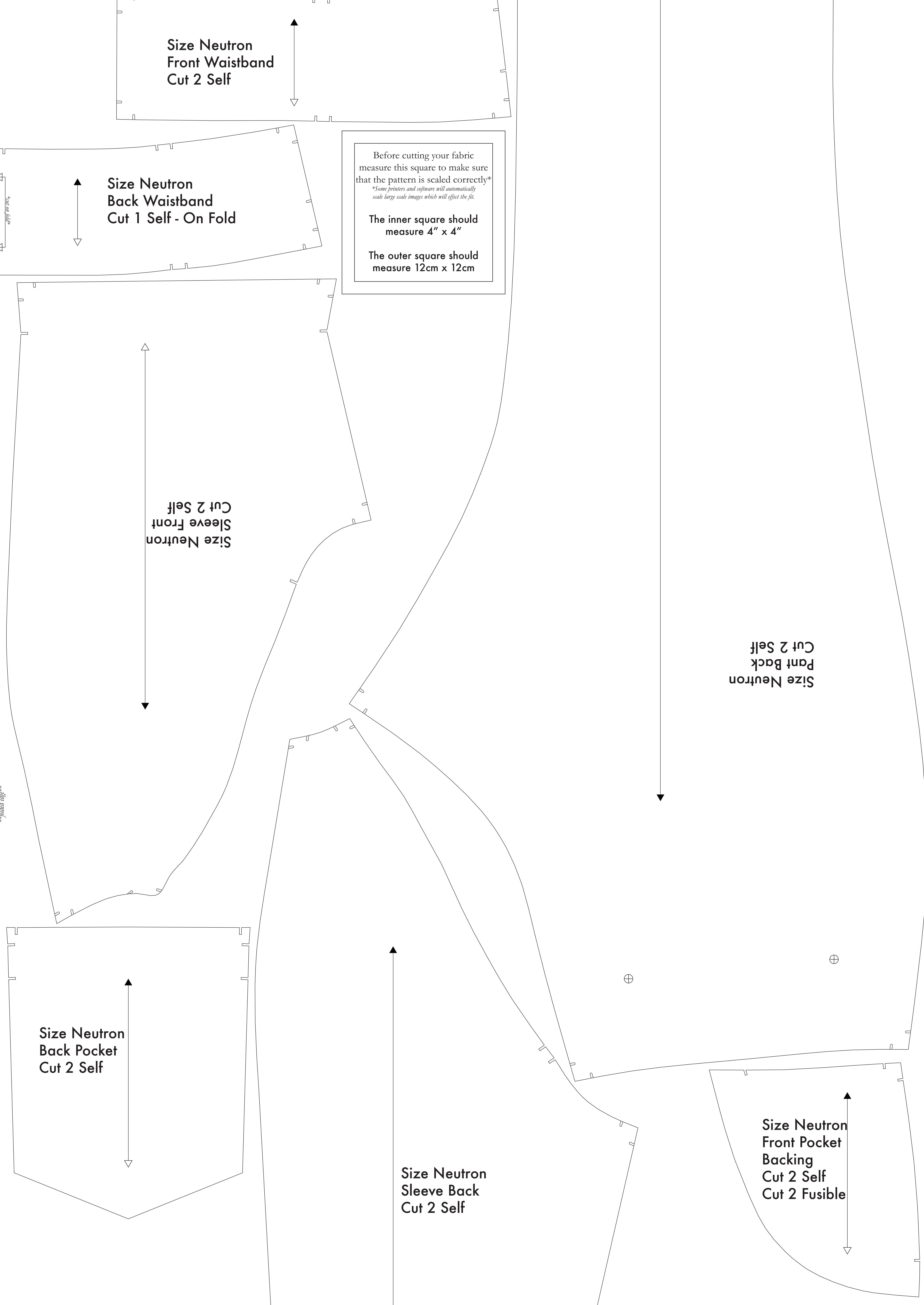
If your fabric has a nap or directional pattern, you will need to cut each pattern piece individually from the paper template and make a note on your fabric where you need to connect the pieces. The pieces should be cut along the outermost rectangle to remove any excess paper. This template should be roughly a 18" x 36" or larger piece of fabric that has been folded in half. If your fabric is less than 54" wide, see **NOTE A**. The maximum width this pattern is flat out for fabric that also can have a direction. For fabric with a nap, such as velvet or corduroy or fabric with a clear directional print, see **NOTE B**.

NOTE C: USING FUSIBLE INTERFACING

Fusible interfacing is a material that adds structure, reinforcement, and holds pattern pieces in place. When the use of fusible interfacing is required, the pattern pieces are marked with the direction "Cut 2 Fusible" or "Cut 1 Fusible".



Before cutting your fabric measure this square to make sure that the pattern is scaled correctly.*
 *Some printers and software will automatically scale large scale images which will affect the fit.
 The inner square should measure 4" x 4"
 The outer square should measure 12cm x 12cm



Belt Loops Cut 1 Self

Size Neutron Pant Back Cut 2 Self