

- SUPPLIES NEEDED**
- 3 YARDS OF 54" WIDE FABRIC
 - SHARP SCISSORS
 - REMOVABLE MARKING MEDIUM (chalk, wax, tailor's tuck, etc.)
 - 1, 24" NON-SEPARATING ZIPPER
 - THREAD
 - SEWING MACHINE
- OPTIONAL:**
- 1/2 YARD OF THINNER POCKET FABRIC
 - FUSIBLE INTERFACING

CUTTING INSTRUCTIONS

1. Print pattern. You can print this document (that on sheets of standard size paper) and tape the pieces together, or print on a wide-format printer (36" or wider). These sheets offer this service for approximately \$12. If available to you, the B2B recommends wide-format printing.
2. Once your pattern is printed, cut along the outermost rectangle to remove any excess paper. This template should fit exactly on a 54" wide or larger piece of fabric that has been folded in half. If your fabric is less than 54" wide, see **NOTE A**. For measurement, add this pattern to laid-out fabric that also only have a direction. For fabric with a nap, such as velvet or corduroy or fabric with a clear directional print, see **NOTE B**.
3. Hold your fabric or half along the lengthwise grain matching sub-edge to sub-edge. Selvage in the self-finished edge of fabric. This narrow hemline keeps the fabric from unraveling or fraying. Often this is an edge that resembles fine fringe, though just as frequently, a clearly finished line will be found. Avoid this edge in your cut pieces as the texture frequently differs from the main body of the fabric.
4. Place the paper template on top your fabric, matching the folded edge of the fabric with the side of the paper marked "folded edge".
5. Place pins throughout the template pinning together both layers of fabric as well as the paper.
6. Cut around the perimeter of each piece.
7. Laying the pins or clips, you will need need to snip each of the notches, taking care to not snip beyond the end of the U-shape!

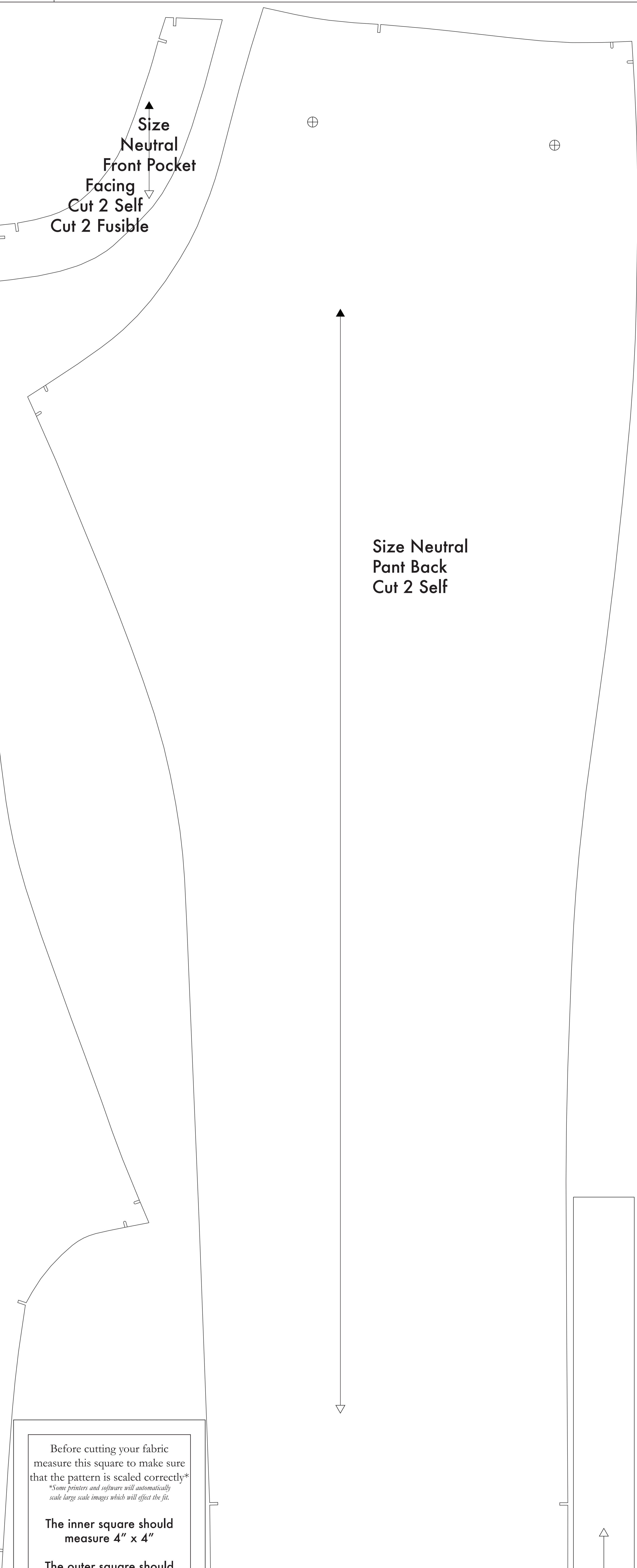
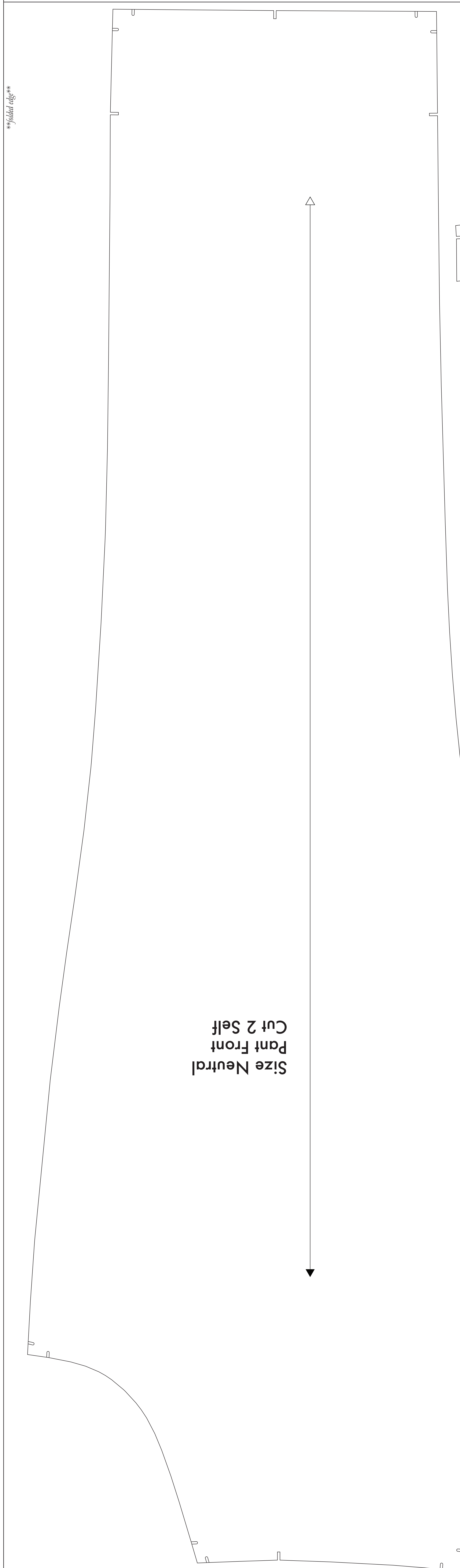
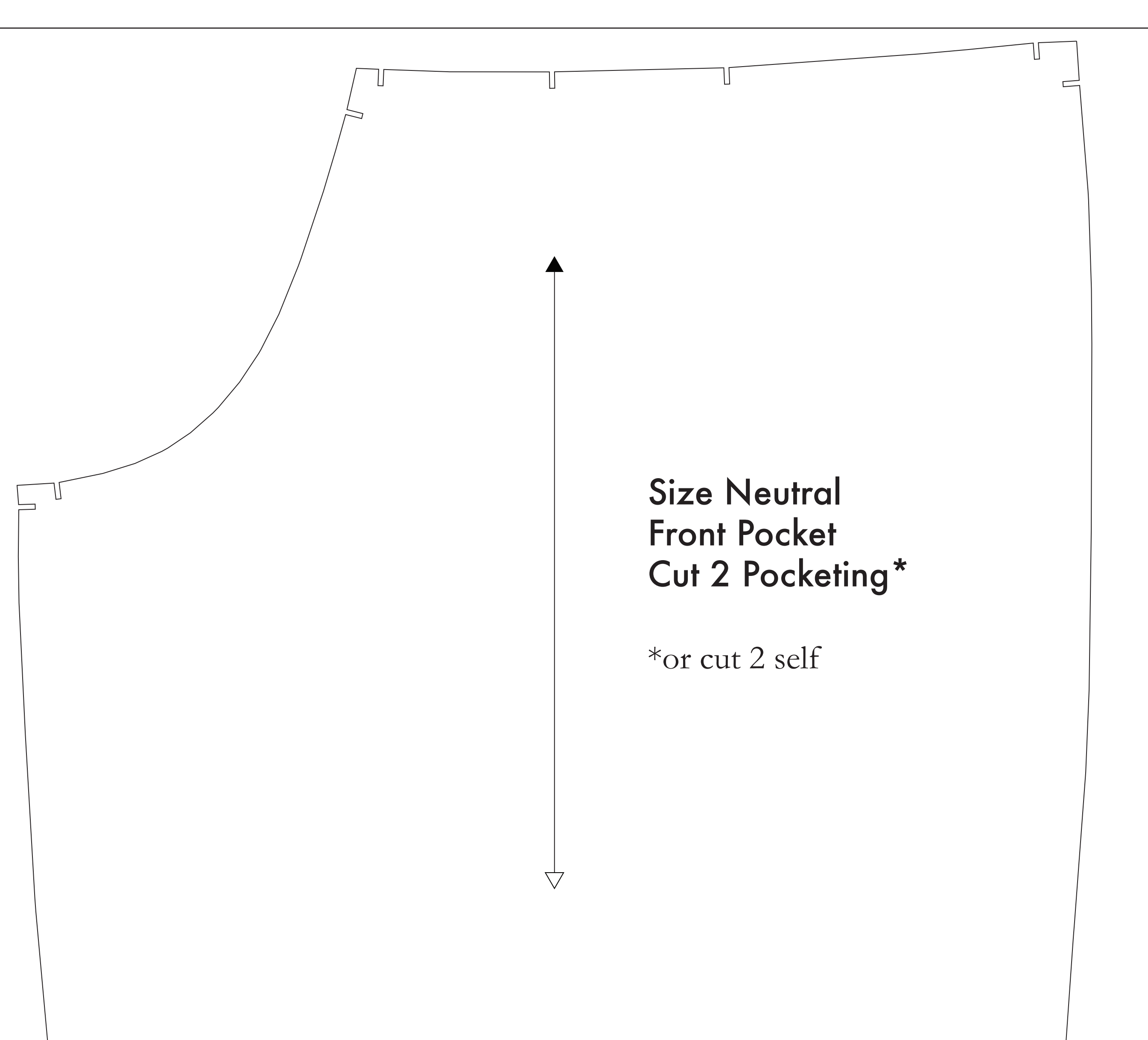


8. Mark all inner notch holes. Using a pin, bring together both layers of fabric and the pattern, mark the corner of each notch hole with chalk, wax, or other removable, non-permanent tool. A tailor's tack may also be used. These marks will help you identify the notch holes.
9. **OPTIONAL:** Cut fusible interfacing pieces (see **NOTE C** for more info). Pin pieces that use fusible will be marked with the direction "Cut 2 Fusible" or "Cut 1 Fusible." These pieces are the Collar, Fly Facing, Front Pocket Facing, and Pants Pocket Facing. To use the fusible, lay the material down with the glue side facing up, then place your pattern down and cut around the perimeter of each piece and notch.
10. Cut the Front Pocket fly out of a lighter pooking material. If you are not using a pooking material, then the Front Pocket Bag may be cut directly from other pattern pieces. Pooking is used to make both in case of thicker material - You will find an example of pooking on any part of this page.

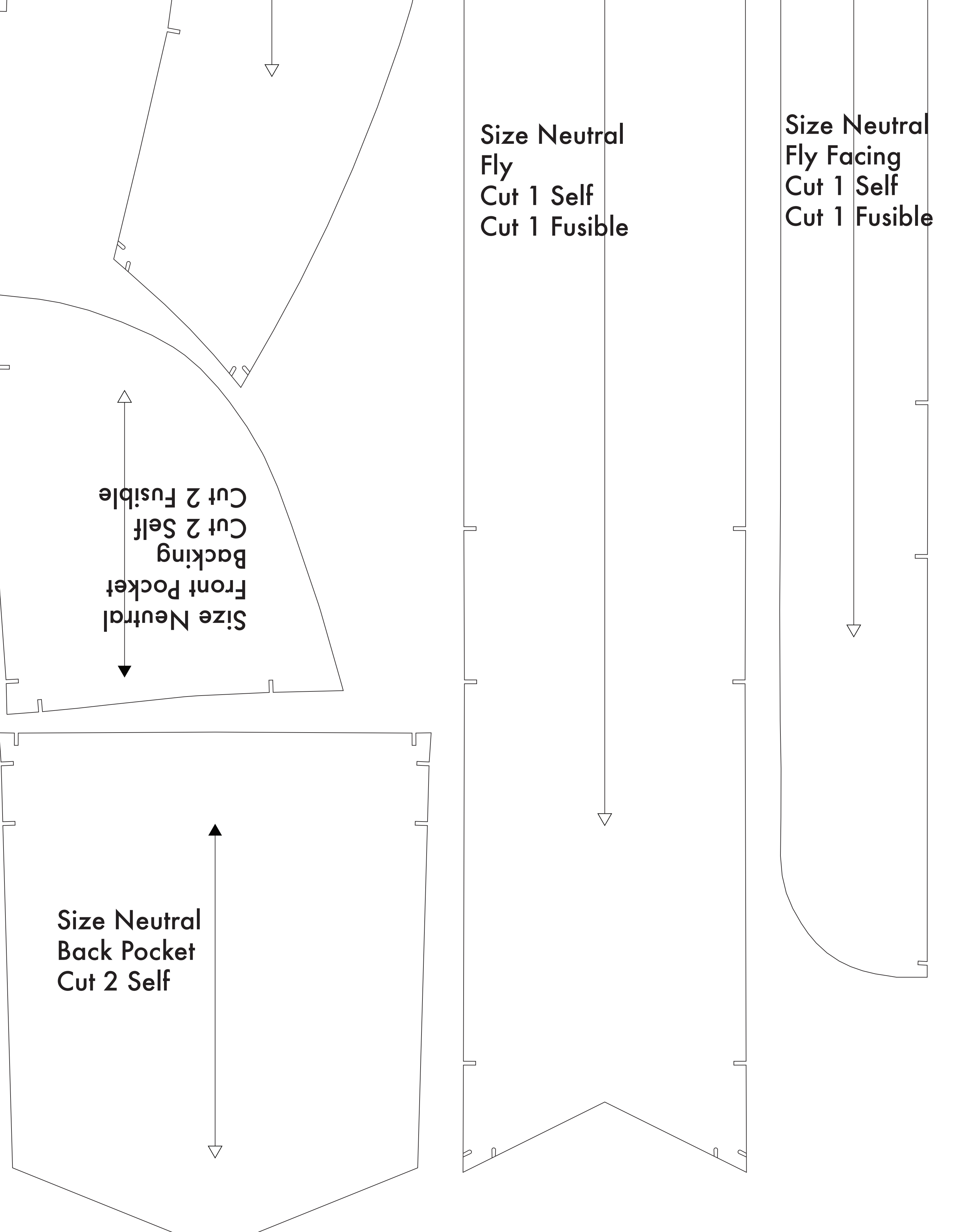
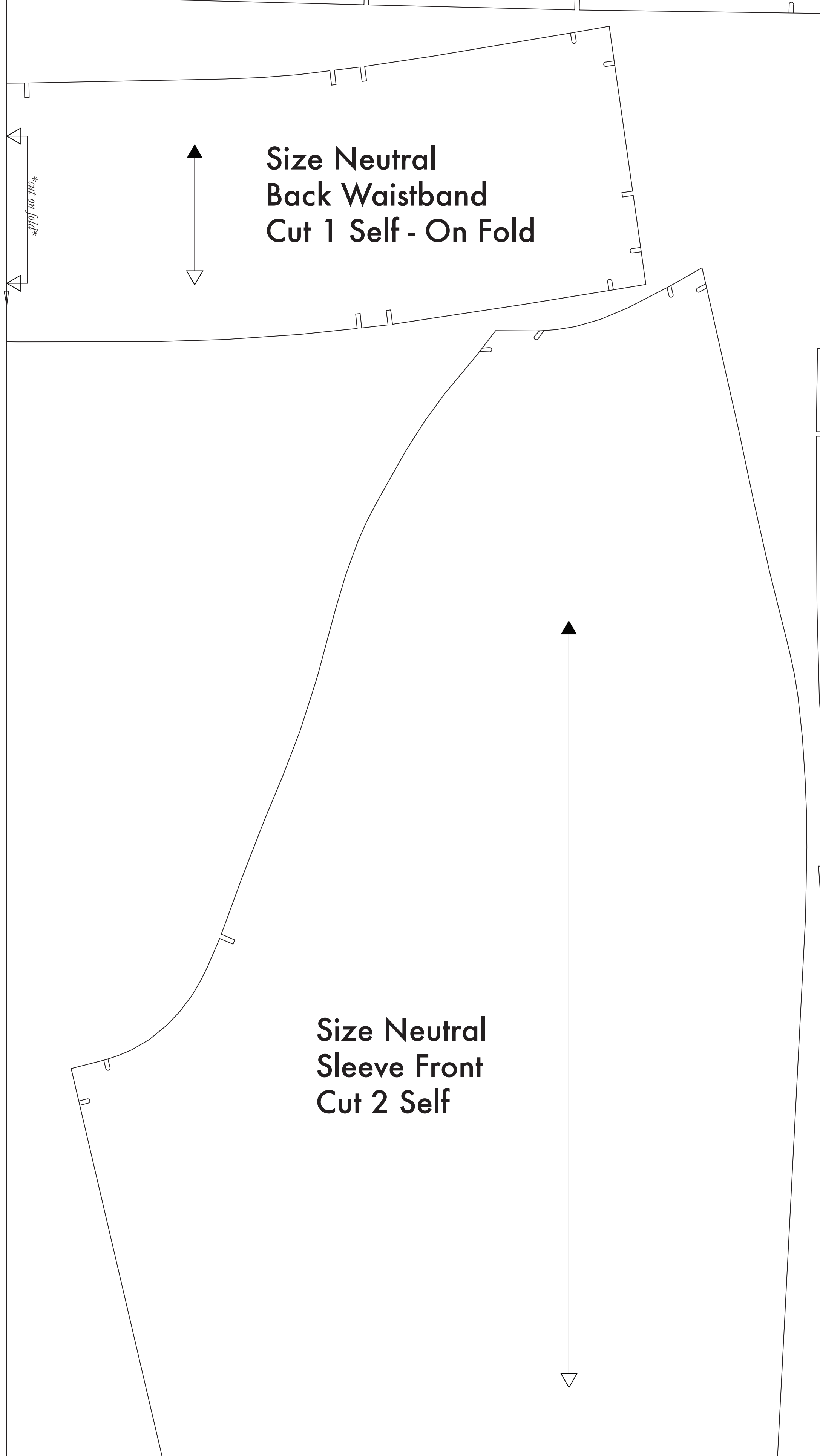
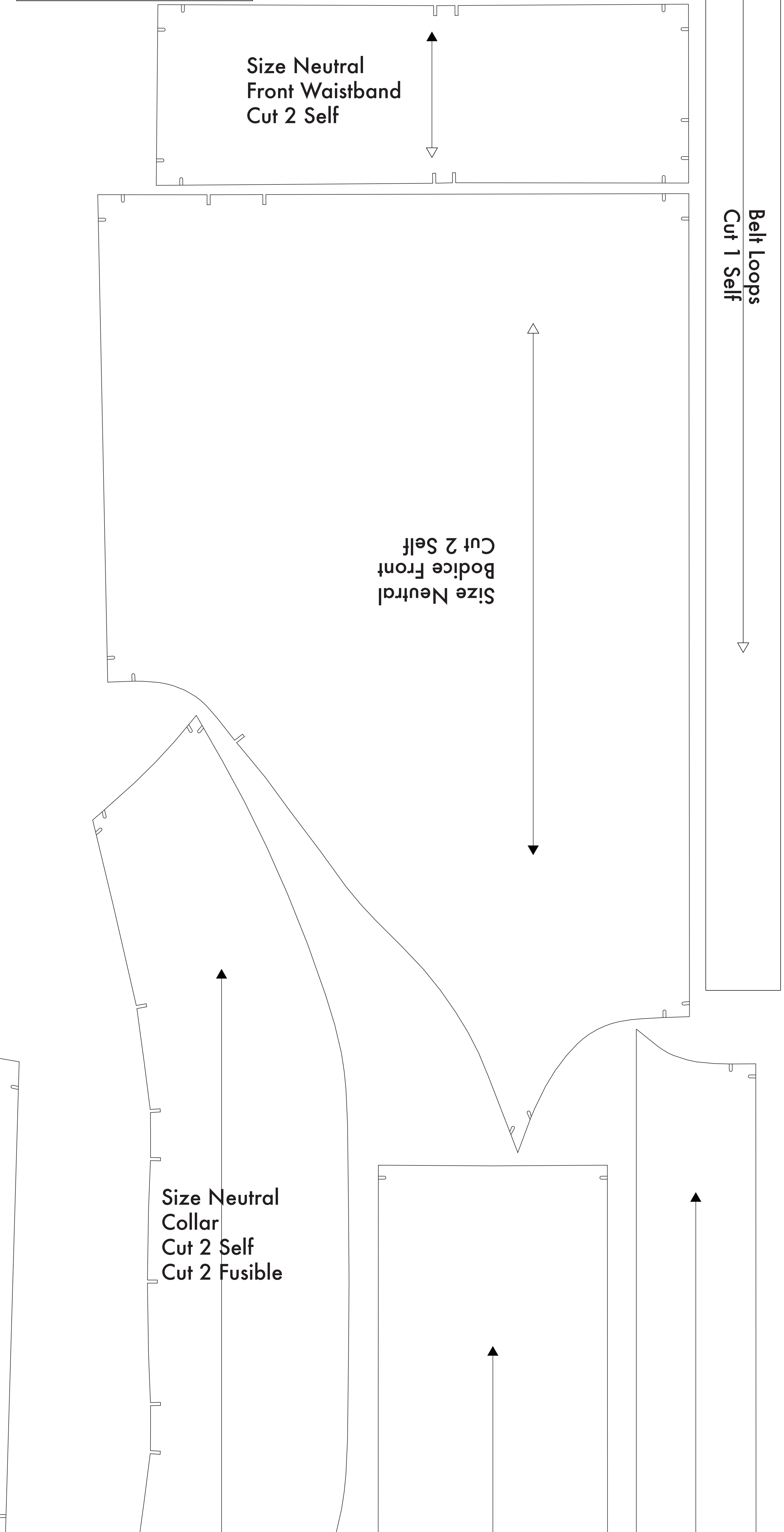
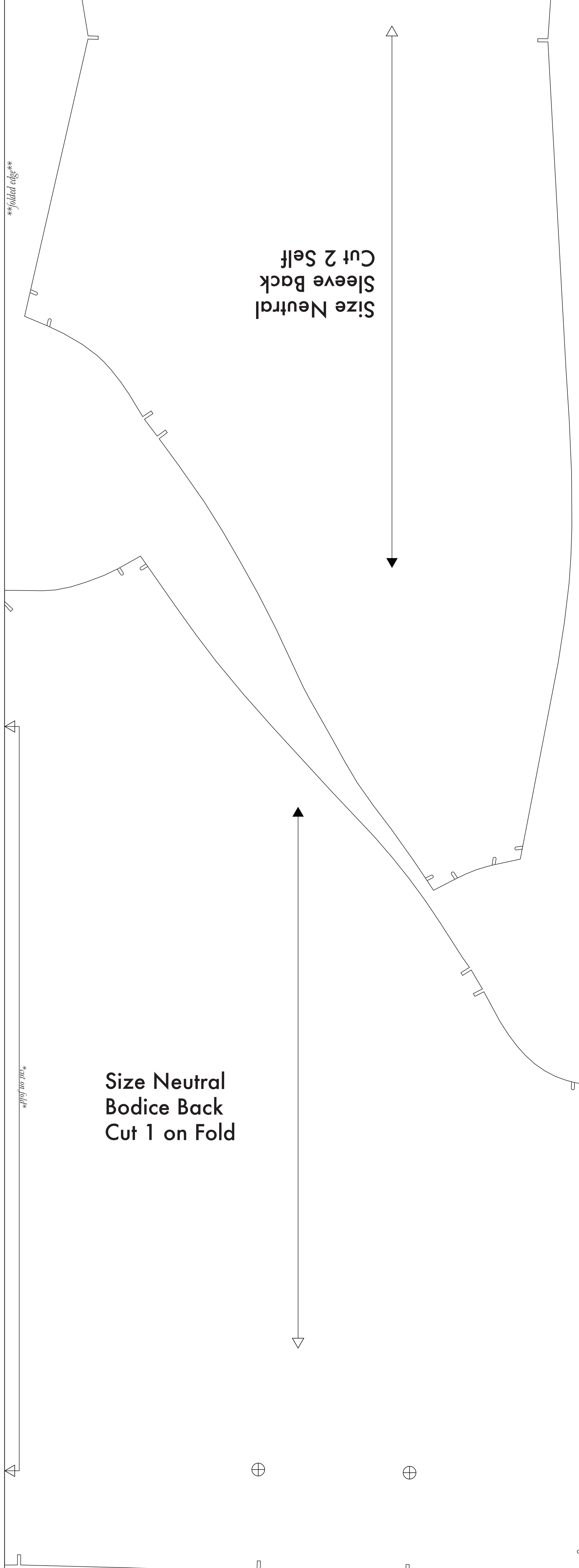
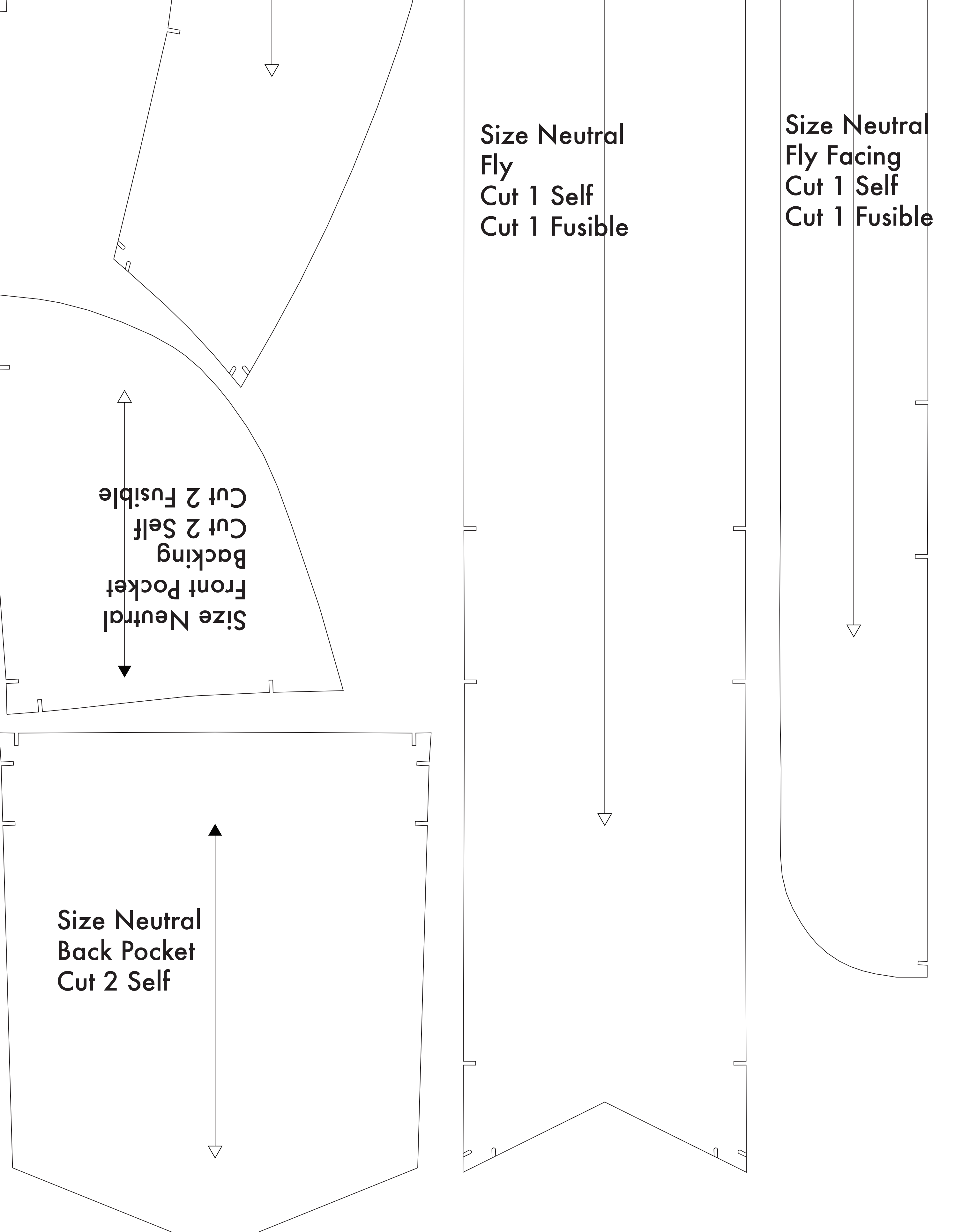
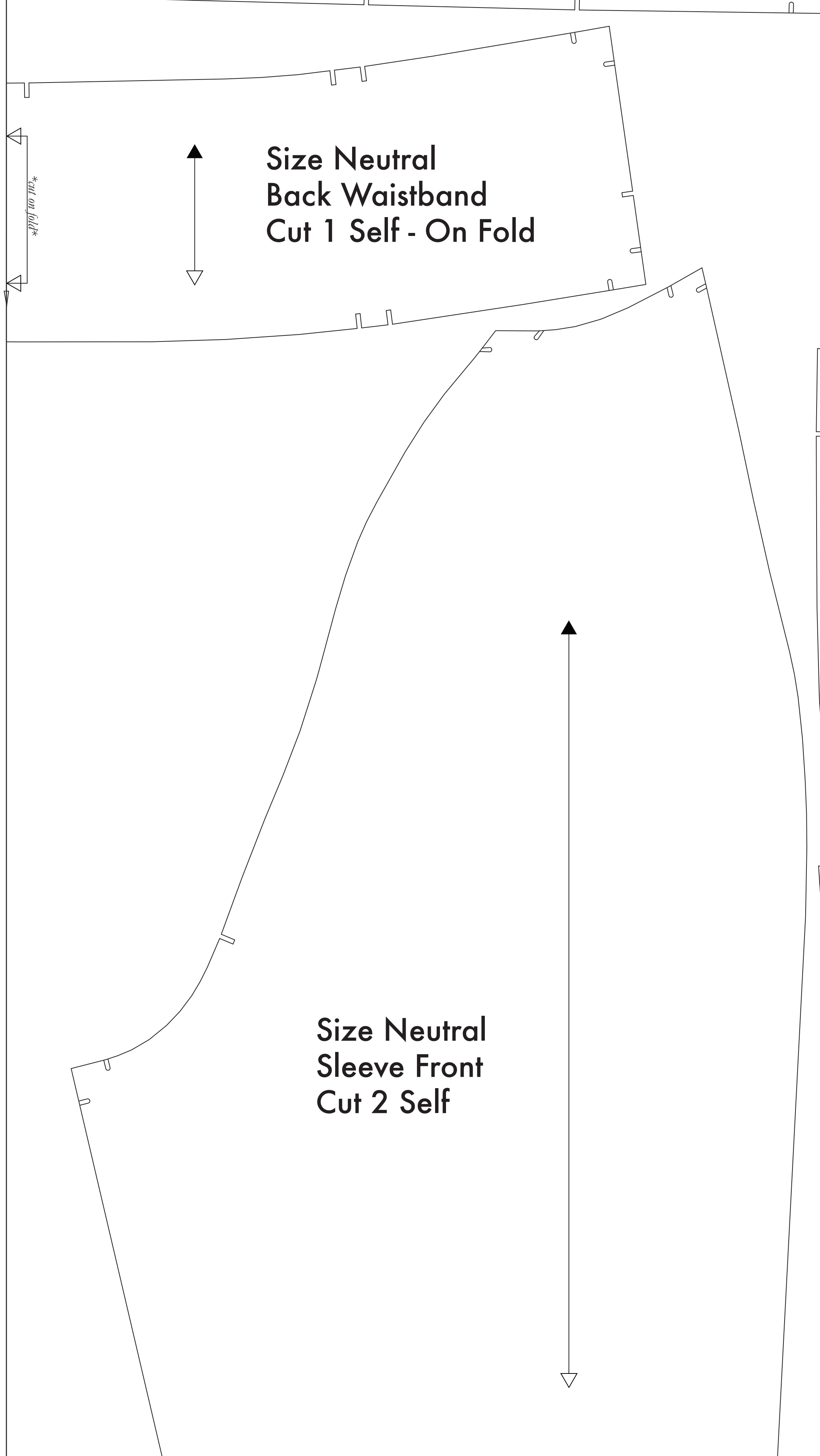
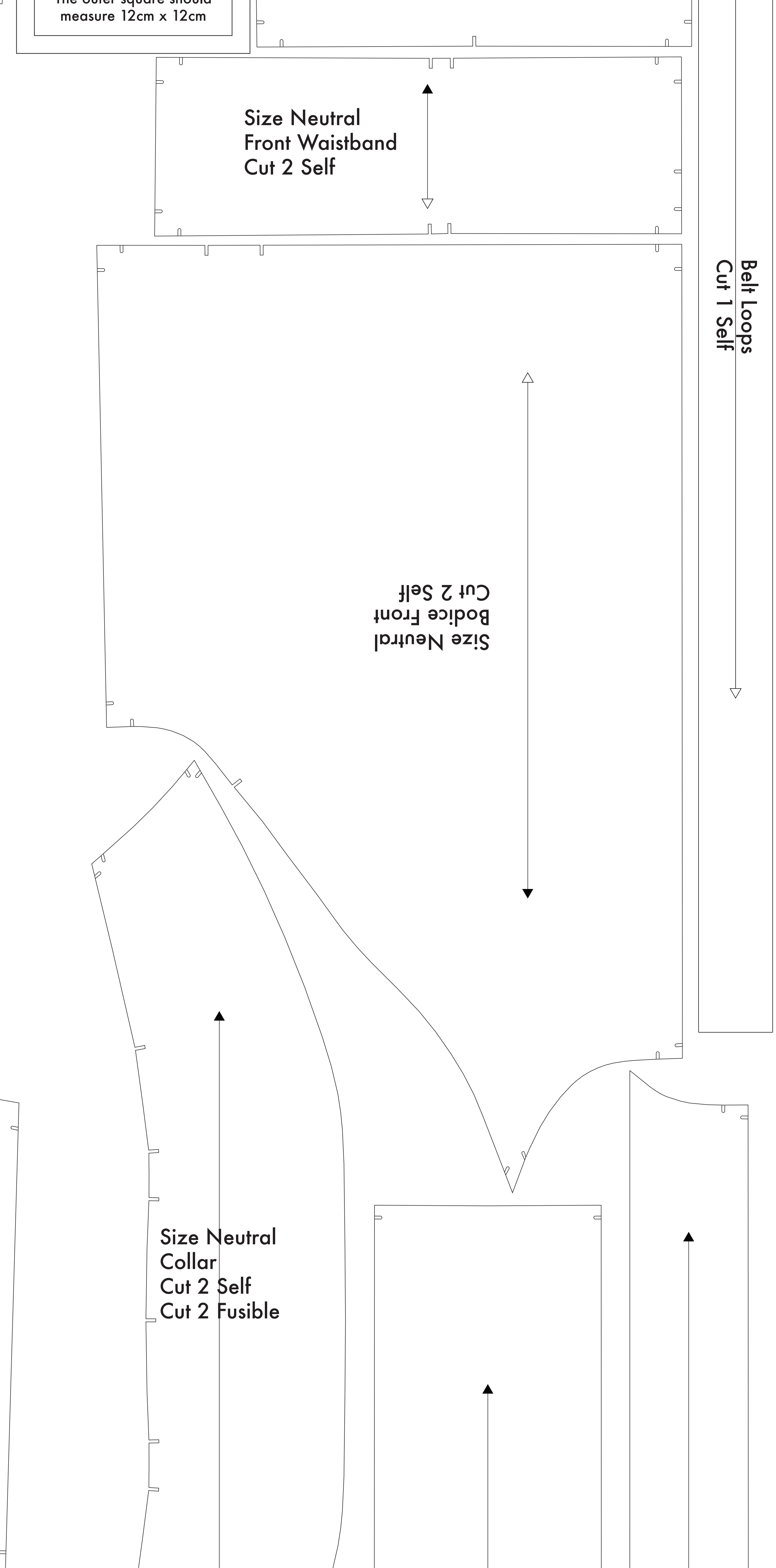
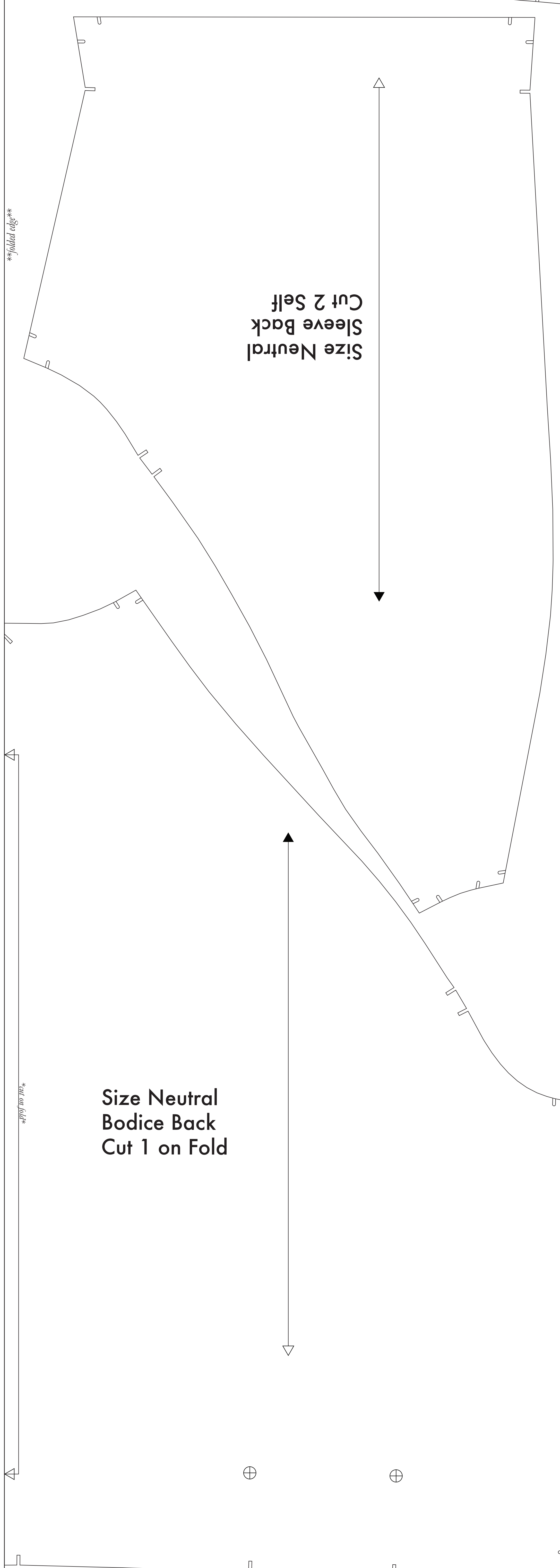
NOTE A: FABRIC LESS THAN 54" WIDE
If your fabric is less than 54" wide, you will need to cut each pattern piece individually from the paper template and piece together on your fabric. Measure your fabric and piece together on your fabric. The cutting instructions and patterns are all marked on each pattern piece to cut to size. To find the graphic marking tool for the right line with two arrows at either end. These lines indicate the direction or grain of the fabric. When cutting from on your fabric, these lines should run parallel to the edge of your fabric. To ensure that they are parallel measure the distance from the top edge piece to the edge of the fabric, then match that same distance with the bottom arrow. When the top and bottom arrows are equidistant from the edge of your fabric, then the pattern piece is correctly positioned.

NOTE B: FABRIC WITH NAP OR DIRECTIONAL PATTERN
For fabric with nap, such as velvet or corduroy, fabric with a clear directional print, or for marking steps such as fold, you will need to cut the pattern pieces individually from the paper template on your fabric, ensuring that the fold lines, seam lines and notches are in the same direction.

NOTE C: USING FUSIBLE INTERFACING
Fusible interfacing is a material that is used to add extra strength and stability to your pieces. It is applied with the use of a hot iron. While the use of fusible interfacing is optional, the B2B recommends it. To use the interfacing, lay the material down with the glue side facing up, then place your pattern down and cut around the perimeter of each piece and notch.



Before cutting your fabric measure this square to make sure that the pattern is scaled correctly*
*Some printers and software will automatically scale large scale images which will affect the fit.
The inner square should measure 4" x 4"
The outer square should measure 12cm x 12cm



Belt Loops Cut 1 Self