

- SUPPLIES NEEDED**
- 3/4 YARD OF 54" WIDE FABRIC
  - SHARP SCISSORS
  - REMOVABLE MARKING MEDIUM (chalk, wax, tailor's tuck, etc.)
  - 1 - 26" NON-SEPARATING ZIPPER
  - THREAD
  - SEWING MACHINE (optional)
  - 1/3 YARD OF THINNER POCKET FABRIC
  - FUSIBLE INTERFACING

**CUTTING INSTRUCTIONS**

1. Print pattern. You can print the document sheet on sheets of standard size paper and tape the pieces together, or print on a wide-format printer (36" or wider). Print sheets either vertically (for approximately 81.2" if available to you), or horizontally (for approximately 81.2" if available to you). The RTO recommends wide-format printing.
2. Once your pattern is printed, cut along the convenience rectangle to remove any excess paper. This template should fit exactly on a 54" wide or larger piece of fabric that has been folded in half. If your fabric is less than 54" wide, you will need to print the pattern on two sheets of fabric that have been folded in half. For fabric with a nap, such as velvet or corduroy or fabric with a clear directional print, see **NOTE B**.
3. Fold your fabric in half along the lighter-weight marking side edge (the side with the selvage) to create a self-finished edge of fabric. This narrow border keeps the fabric from unraveling or fraying. When it has an edge that reveals the true finish (such as a fringed or shaggy finish) it will be frayed. Fold this edge in your cut pieces as the pattern frequently differs from the main body of the fabric.
4. Place the paper template on top of your fabric, matching the folded edge of the fabric with the side of the paper marked "folded edge."
5. Place pins throughout the template, pinning together both layers of fabric as well as the paper.
6. Cut around the perimeter of each piece.
7. Laying the pins in place, you will need to cut or snip each of the notches, taking care to not snip beyond the end of the U shape!
8. Mark all notches and darts. Using a pin, bring together both layers of fabric and the pattern, mark the center of each notch with chalk, wax or other removable, disappearing mark. A tailor's tuck may also be used.
9. Mark all notches and darts. Using a pin, bring together both layers of fabric and the pattern, mark the center of each notch with chalk, wax or other removable, disappearing mark. A tailor's tuck may also be used.
10. **OPTIONAL:** Cut fusible interfacing pieces. **NOTE C:** For more info, please refer to the fabric with the markings, such as the Collar, Fly, Fly Facing, Front Pocket Facing, and Front Pocket Backing. To cut the fusible, lay the material down with the plus side facing up, then place your pattern down and cut around the perimeter of each piece and notch.
11. Cut the Front Pocket Bag out of a lighter-weight material. If you are using a pocketing material, then the Front Pocket Bag may be cut separately near other pattern pieces. *Printing it next to other bags in case of fabric marked - You will not see a sample of pocketing, or any part of the item.*

**NOTE A: FABRIC LESS THAN 54" WIDE**

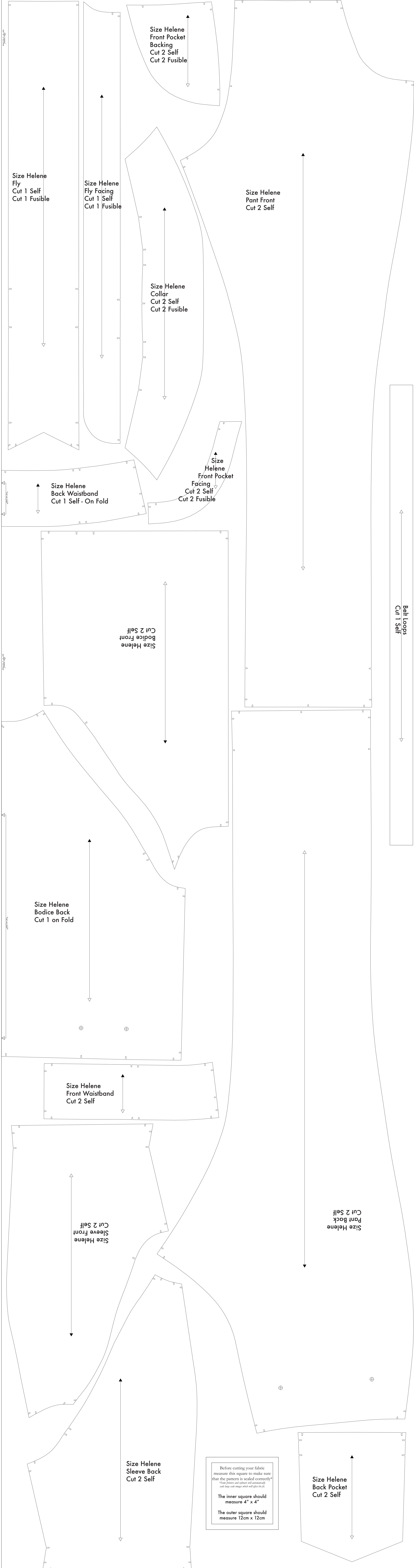
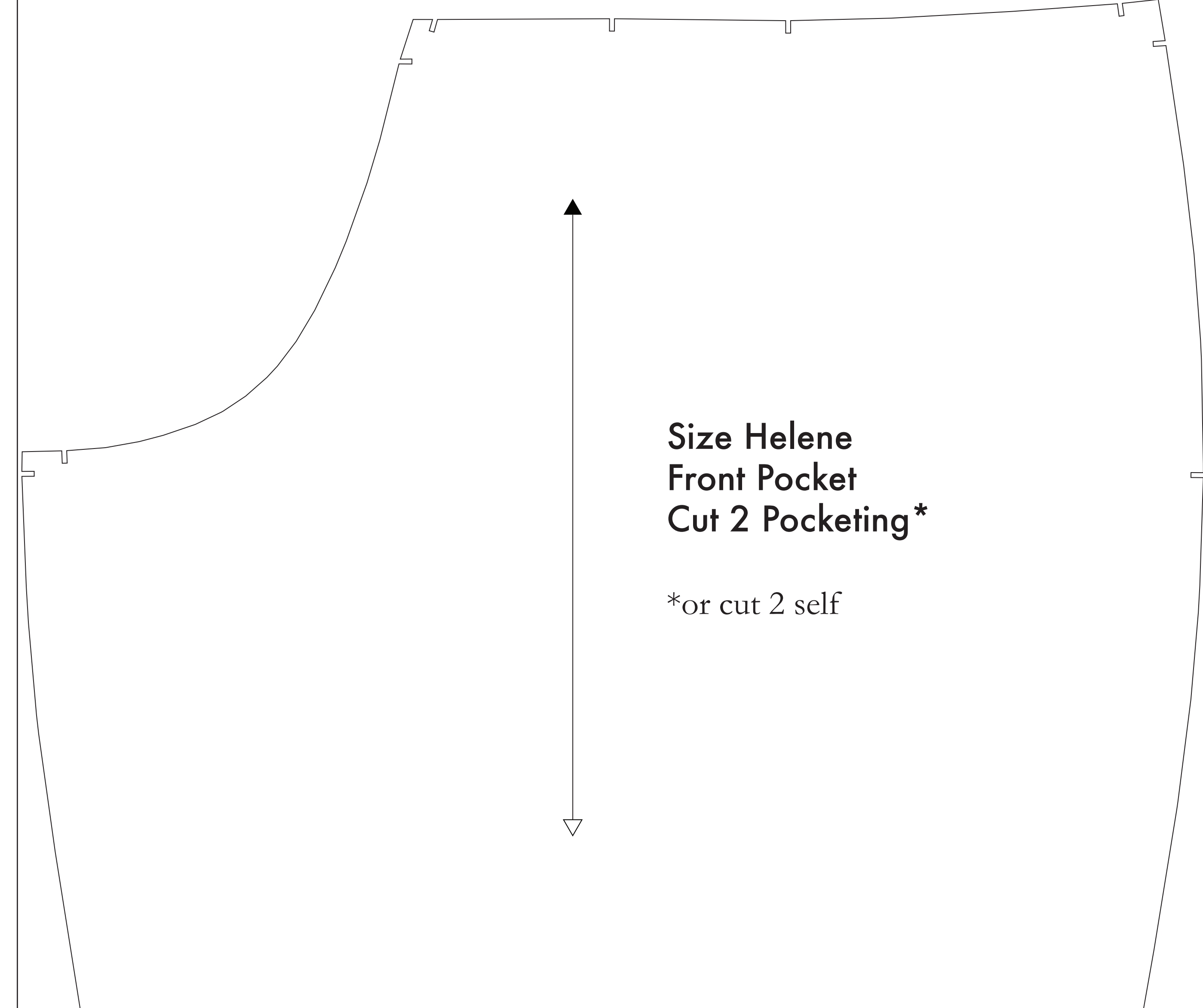
If your fabric is less than 54" wide, you will need to cut each pattern piece individually from the paper template and center it on a piece of fabric which is wider than the pattern piece you wish to make. The paper template and center line on your fabric should be centered on the pattern piece you wish to make. The pattern template and center line on your fabric should be centered on the pattern piece you wish to make. The pattern template and center line on your fabric should be centered on the pattern piece you wish to make.

**NOTE B: FABRIC WITH NAP OR DIRECTIONAL PATTERN**

For fabric with a nap or directional pattern, such as velvet, corduroy, or fabric with a clear directional print, you will need to print the pattern on two sheets of fabric that have been folded in half. For fabric with a nap, such as velvet or corduroy or fabric with a clear directional print, see NOTE B.

**NOTE C: USING FUSIBLE INTERFACING**

Fusible interfacing is used to stabilize and strengthen the fabric. It is used to stabilize and strengthen the fabric. It is used to stabilize and strengthen the fabric.



Before cutting your fabric measure this square to make sure that the pattern is scaled correctly\*

\*Some printers and software will automatically scale large scale images which will affect the fit.

The inner square should measure 4" x 4"

The outer square should measure 12cm x 12cm