

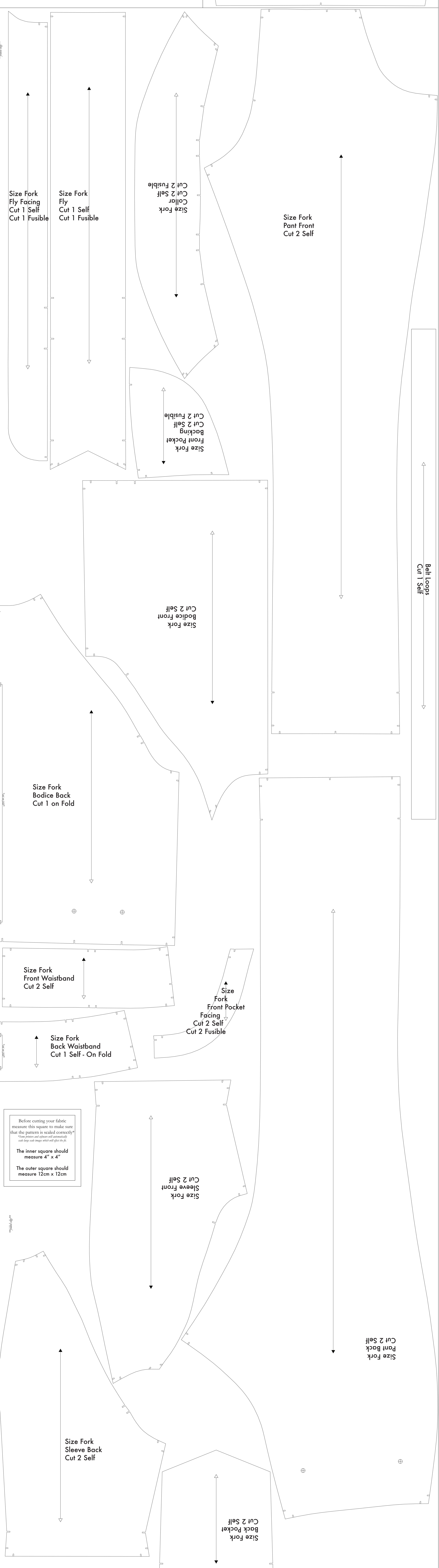
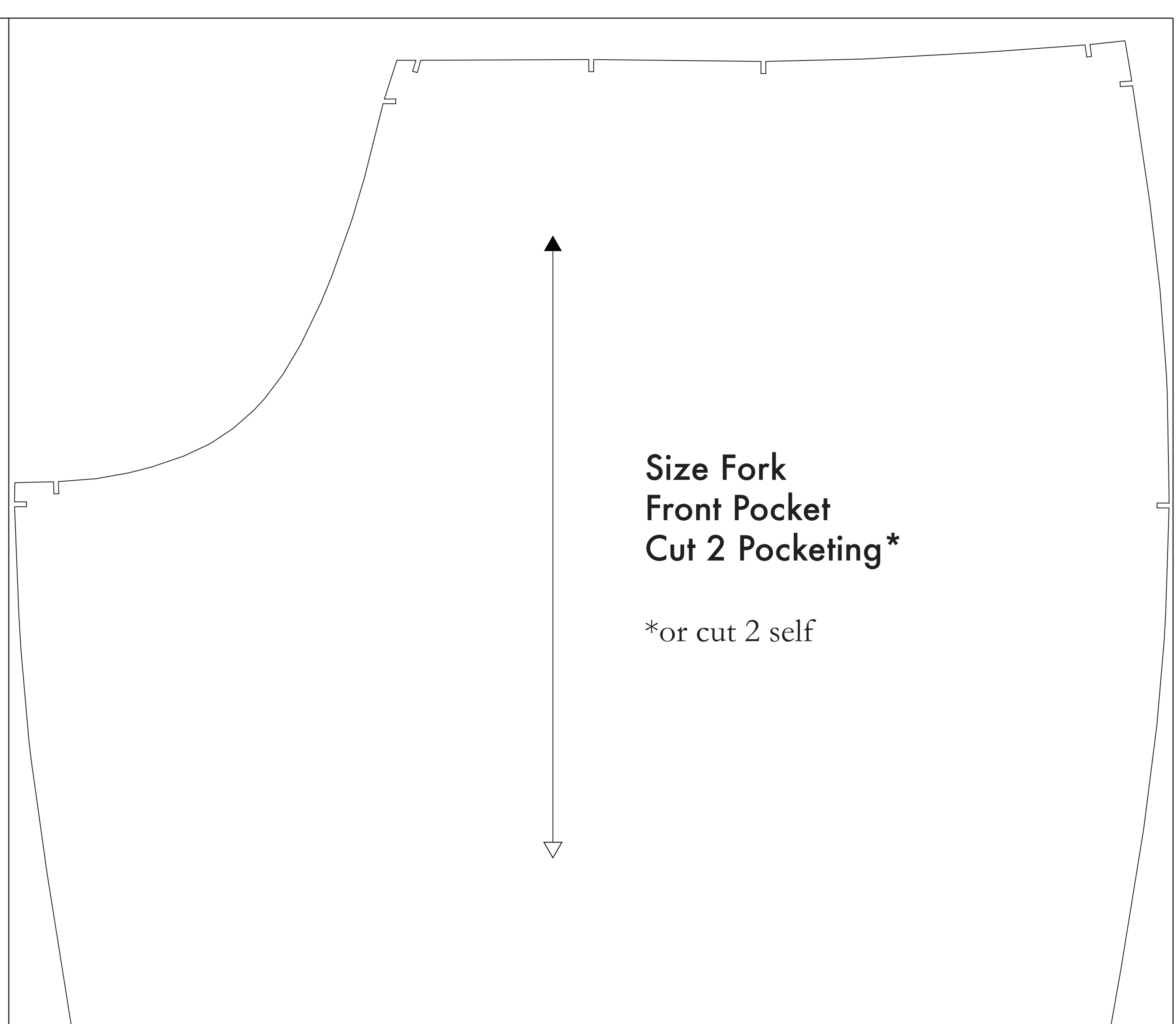
- SUPPLIES NEEDED**
- 3 1/2 YARDS OF 54" WIDE FABRIC
 - SHARP SCISSORS
 - REMOVABLE MARKING MEDIUM (chalk, wax, tailor's tack, etc.)
 - 1 - 24" NON-SEPARATING ZIPPER
 - THREAD
 - SEWING MACHINE
- optional:*
- 1/2 YARD OF THINNER POCKET FABRIC
 - FUSIBLE INTERFACING

- CUTTING INSTRUCTIONS**
- Print pattern. You can print this document (and on sheets of standard size paper and tape the pieces together, or print on a wide-format printer (36" or wider). Print sheets offer this service for approximately \$12. If available to you, the B&B recommends wide-format printing.
 - Once your pattern is printed, cut along the outermost rectangle to remove any excess paper. This template should fit exactly on a 1/2 yard or more piece of fabric that has been folded in half. If your fabric is less than 54" wide use **NOTE A**. For maximum detail this pattern is laid out for fabric that does not have a direction. For fabric with a nap use **NOTE B**.
 - Fold your fabric in half along the lengthwise grain matching selvage edge to selvage edge. Serge in the self-finished edge of fabric. This narrow hem keeps the fabric from stretching or fraying. Once it is on an edge that resembles top fringe, though just as frequently, a clearly finished line will be found. Avoid this edge in your cut pieces as the texture frequently differs from the main body of the fabric.
 - Place the paper template on top your fabric, matching the 54" edge of the fabric with the side of the paper marked "folded edge".
 - Place pins throughout the template pinning together both layers of fabric as well as the paper.
 - Cut around the perimeter of each piece.
 - Leaving the pins in place, you will need to snip each of the notches, taking care to not snip beyond the end of the 1/4" mark!
- NOTE: on the 1/4" diagonal markings that are placed throughout the pattern. Some notches indicate your allowance should, while others will help you line up pattern pieces with ease.*
- Mark all measure (1/4" increments), using a pin, bring together both layers of fabric and the pattern, mark the center of each doll hole with chalk, wax or other removable, non-permanent tool. A tailor's tack may also be used.
 - These center doll holes, markings, are identical to the following pattern. They will be found on the Front Back, Bodice Back, and your pants.
 - Mark the dots that you will find on the Bodice Front.
- PERSONALIZATION:** Cut fusible interfacing pieces per **NOTE C**. For more info: Pattern pieces that use fusible will be marked with the direction "Cut 2 Fusible" or "Cut 1 Fusible". These pieces are: the Collar, Fly, Fly Facing, Front Pocket Facing, and Front Pocket Backing. To cut the fusible, by the marked dots with the fly side facing up, then place your pattern down and cut around the perimeter of each piece and notch. If you are not using a pre-kitting material, then the Front Pocket Bag may be cut alongside your other pattern pieces. *Marking is used to make both in case of thicker material - for an extra pattern example (depending on any pair of fabric uses).*

NOTE A: FABRIC LESS THAN 54" WIDE
 If your fabric is less than 54" wide you will need to cut each pattern piece separately from the paper template and piece together on your fabric using the topographic pattern pieces on the other side of the template. The square notches and notches are placed on each pattern piece for ease of use. To find the grainline markings look for the right-angle symbol on the pattern piece. These lines indicate the direction of your fabric. To ensure that they are parallel to your fabric, draw a line that is perpendicular to the bottom edge. When the top edge of your fabric is parallel to your line, then draw a line that is perpendicular to the bottom edge. When the top edge of your fabric is parallel to your line, then draw a line that is perpendicular to the bottom edge. When the top edge of your fabric is parallel to your line, then draw a line that is perpendicular to the bottom edge.

NOTE B: FABRIC WITH NAP OR DIRECTIONAL PATTERN
 For fabric with a nap such as velvet or other fabrics, this pattern is laid out for fabric that does not have a direction. For fabric with a nap use **NOTE B**. For maximum detail this pattern is laid out for fabric that does not have a direction. For fabric with a nap use **NOTE B**.

NOTE C: USING FUSIBLE INTERFACING
 Fusible interfacing is used to stabilize and strengthen pattern pieces that are not interfaced. When the use of fusible interfacing is required, the pattern pieces will be marked with the direction "Cut 2 Fusible" or "Cut 1 Fusible". These pieces are: the Collar, Fly, Fly Facing, Front Pocket Facing, and Front Pocket Backing. To cut the fusible, by the marked dots with the fly side facing up, then place your pattern down and cut around the perimeter of each piece and notch. If you are not using a pre-kitting material, then the Front Pocket Bag may be cut alongside your other pattern pieces. *Marking is used to make both in case of thicker material - for an extra pattern example (depending on any pair of fabric uses).*



Before cutting your fabric measure this square to make sure that the pattern is scaled correctly*

*Some printers and software will automatically scale large scale images which will affect the fit.

The inner square should measure 4" x 4"

The outer square should measure 12cm x 12cm