

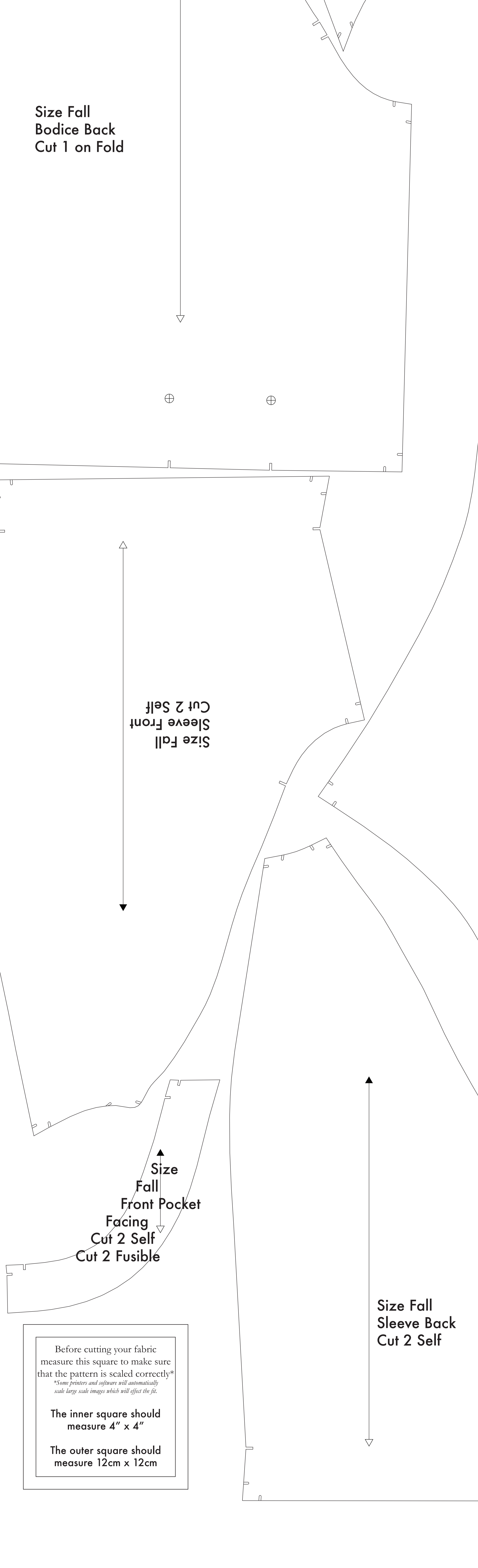
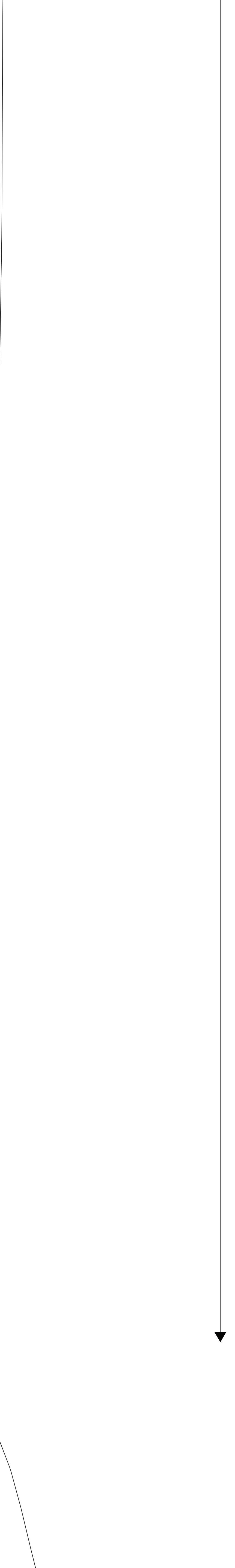
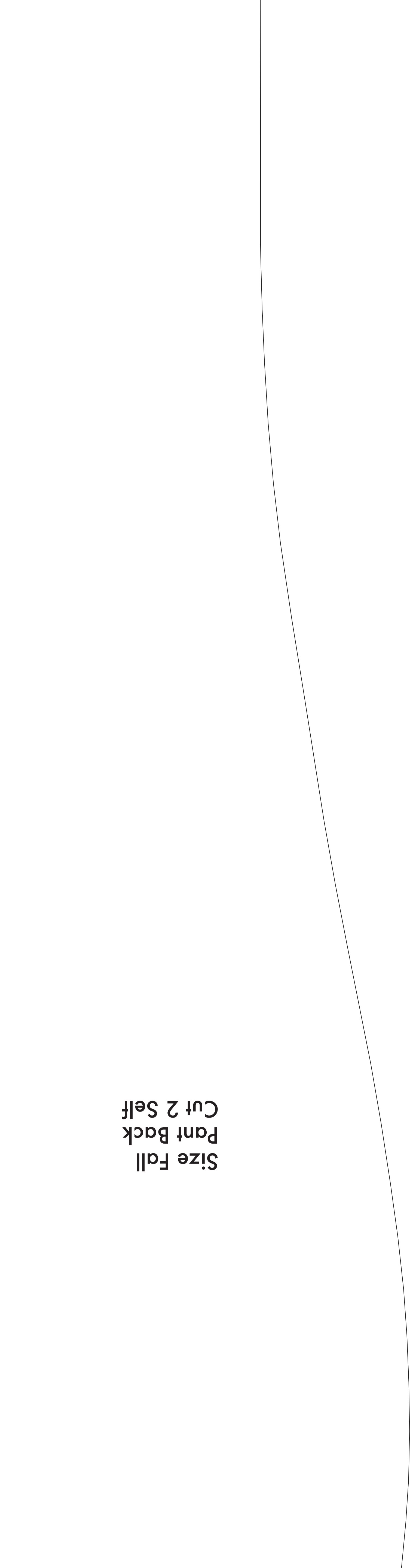
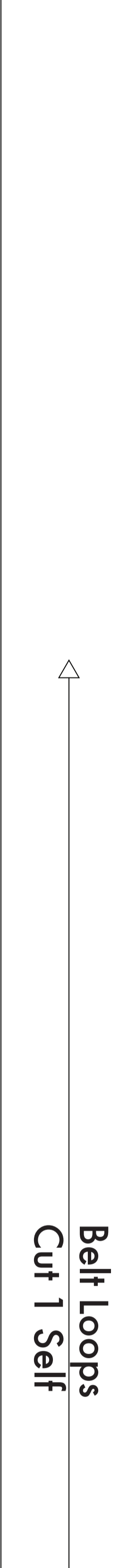
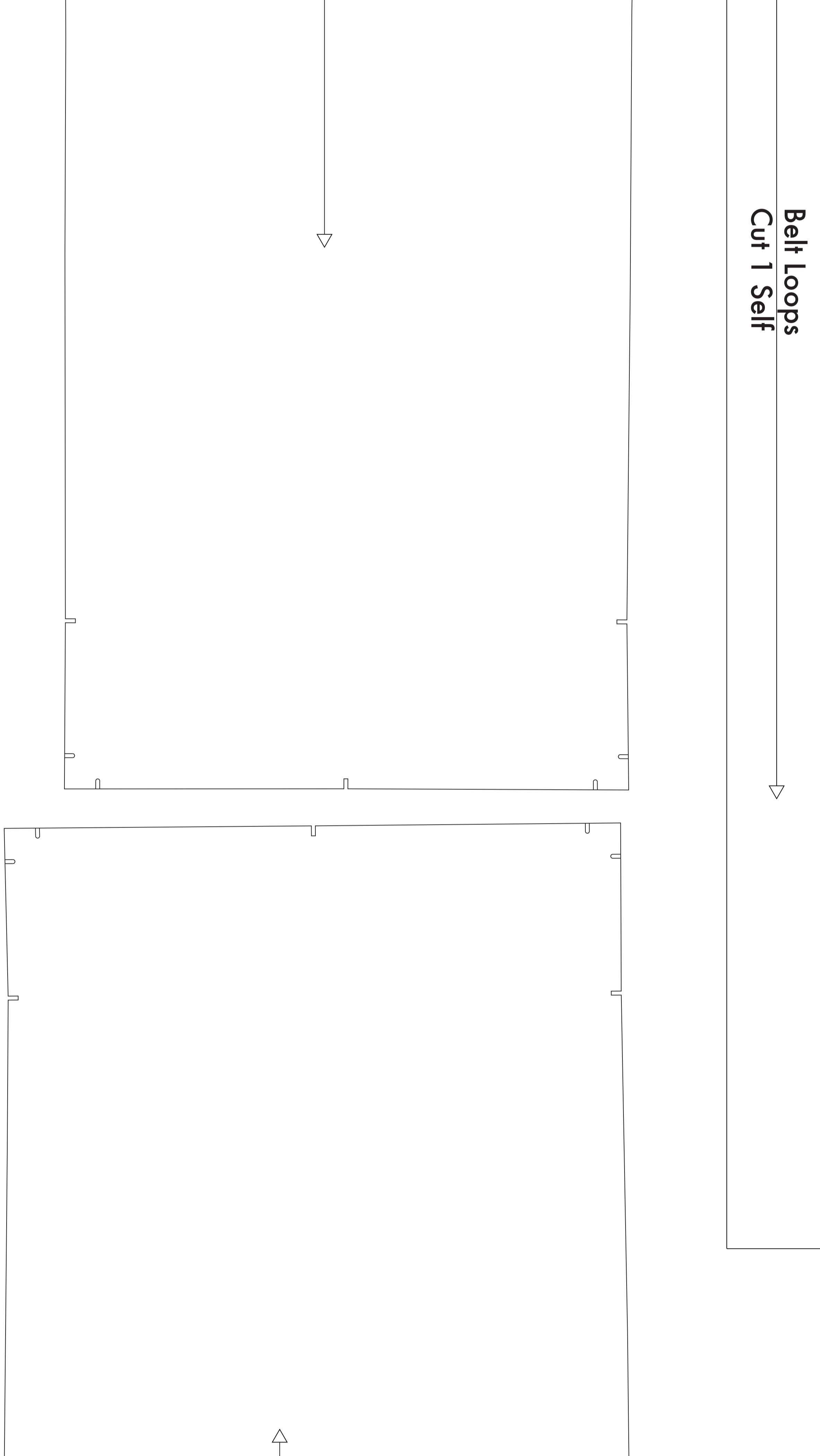
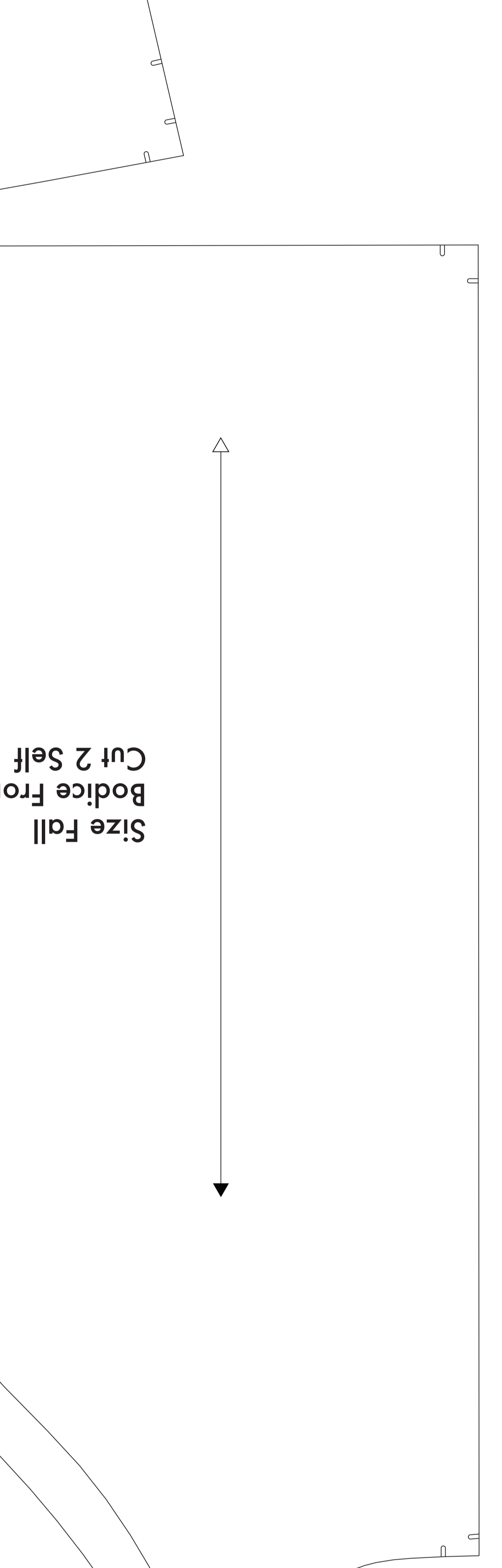
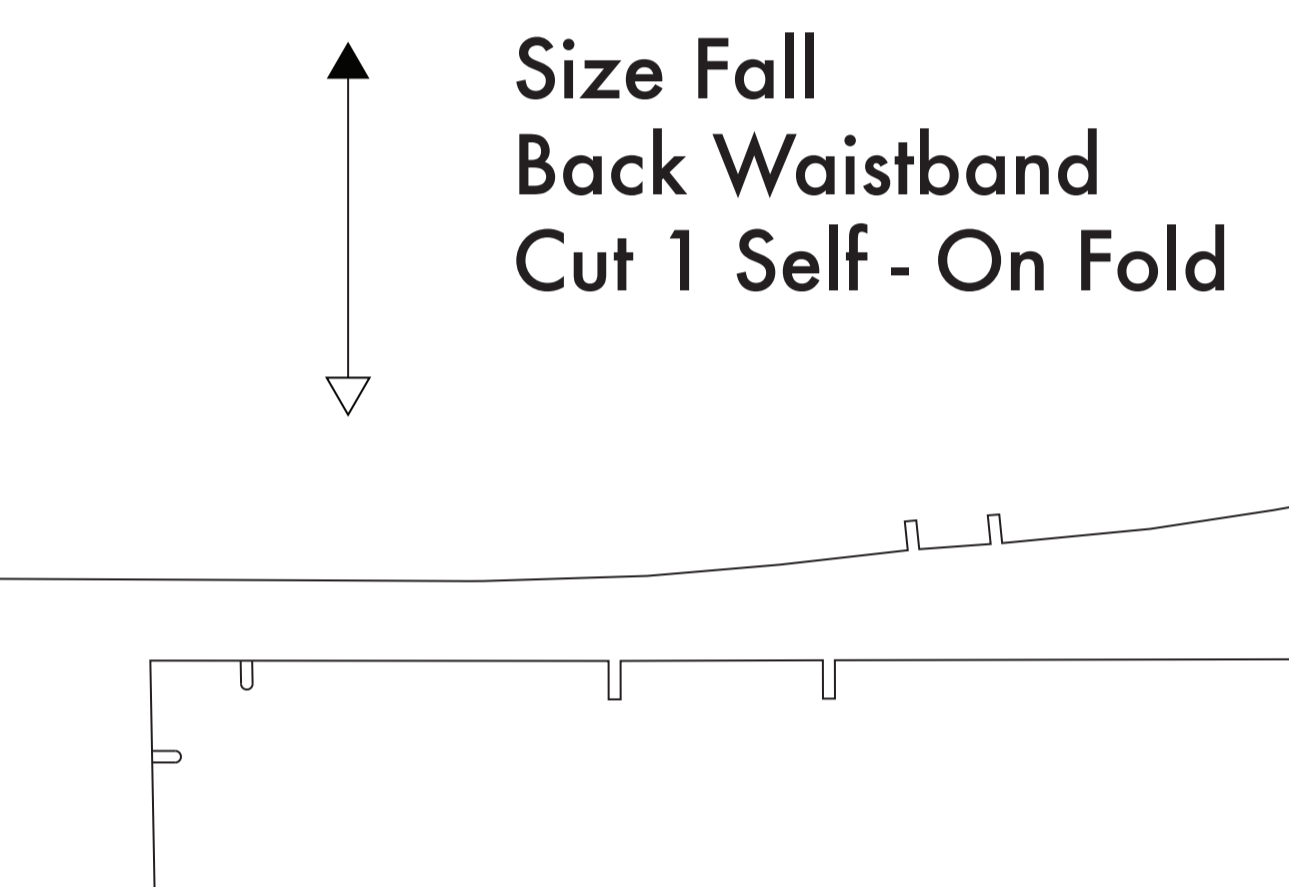
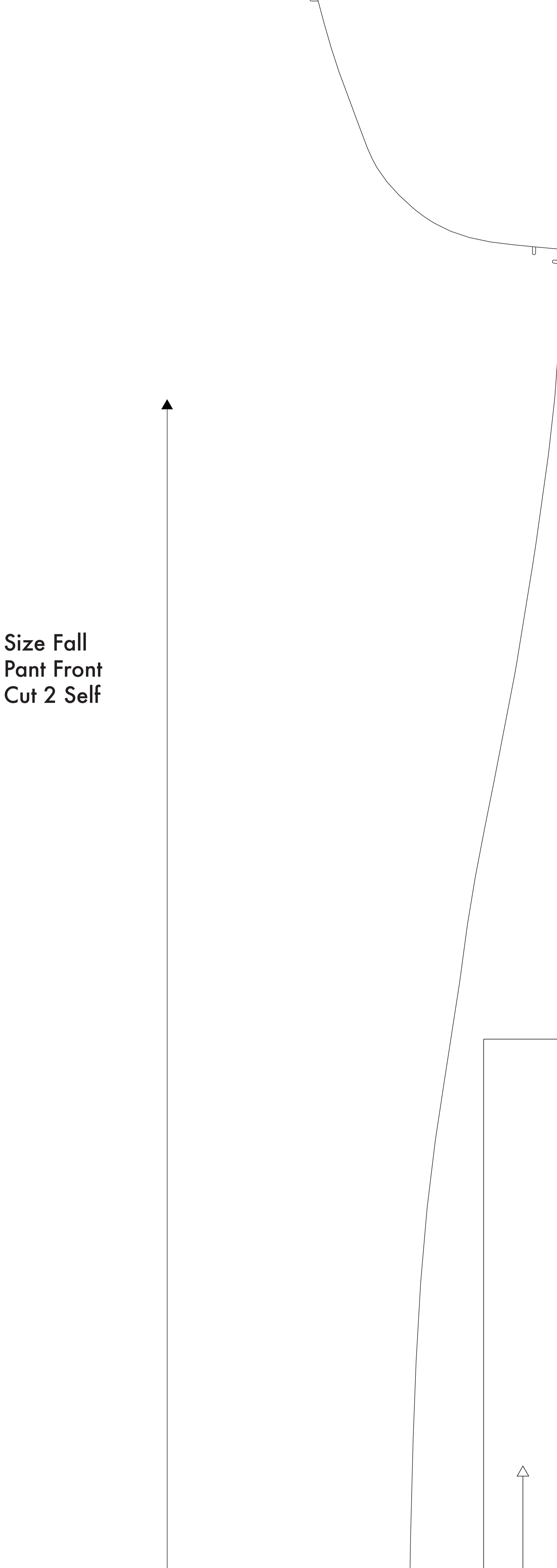
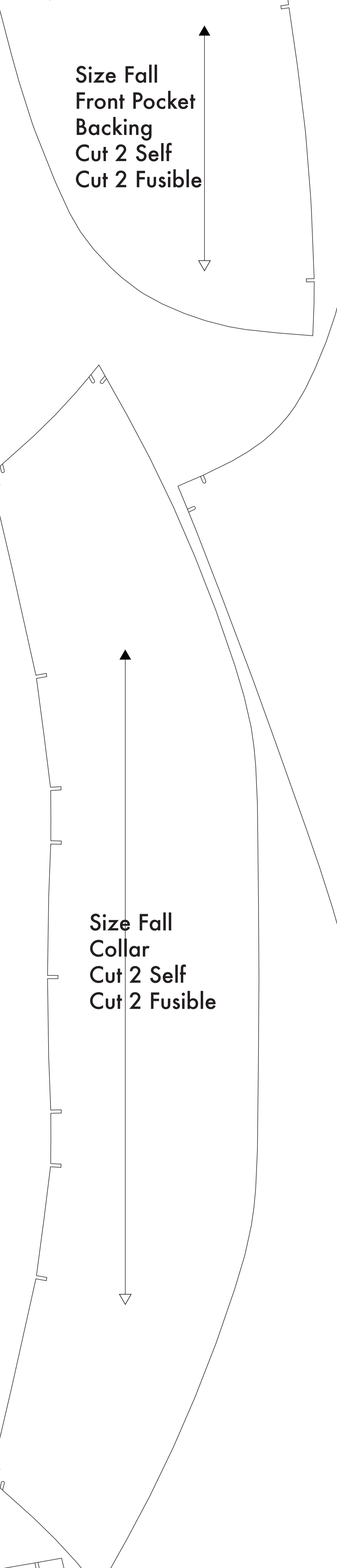
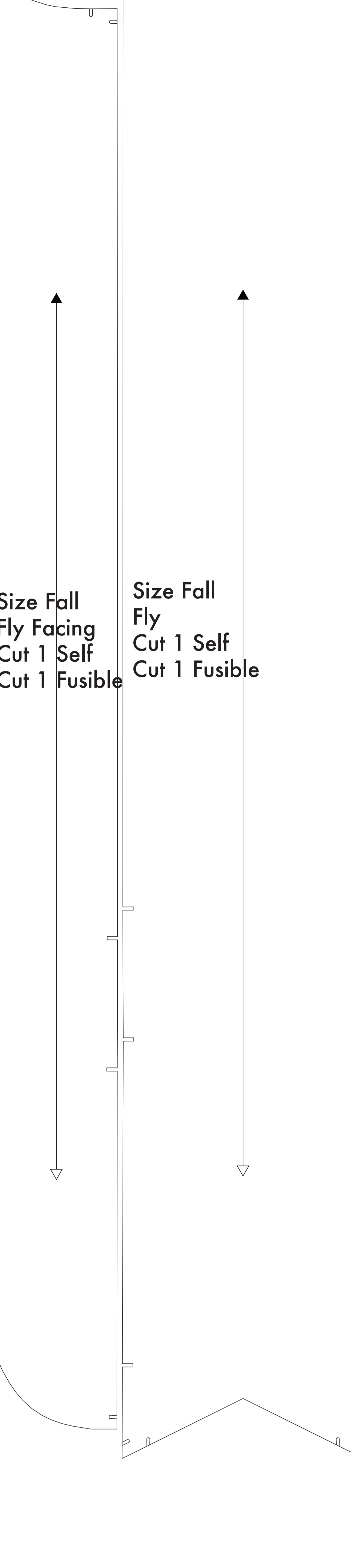
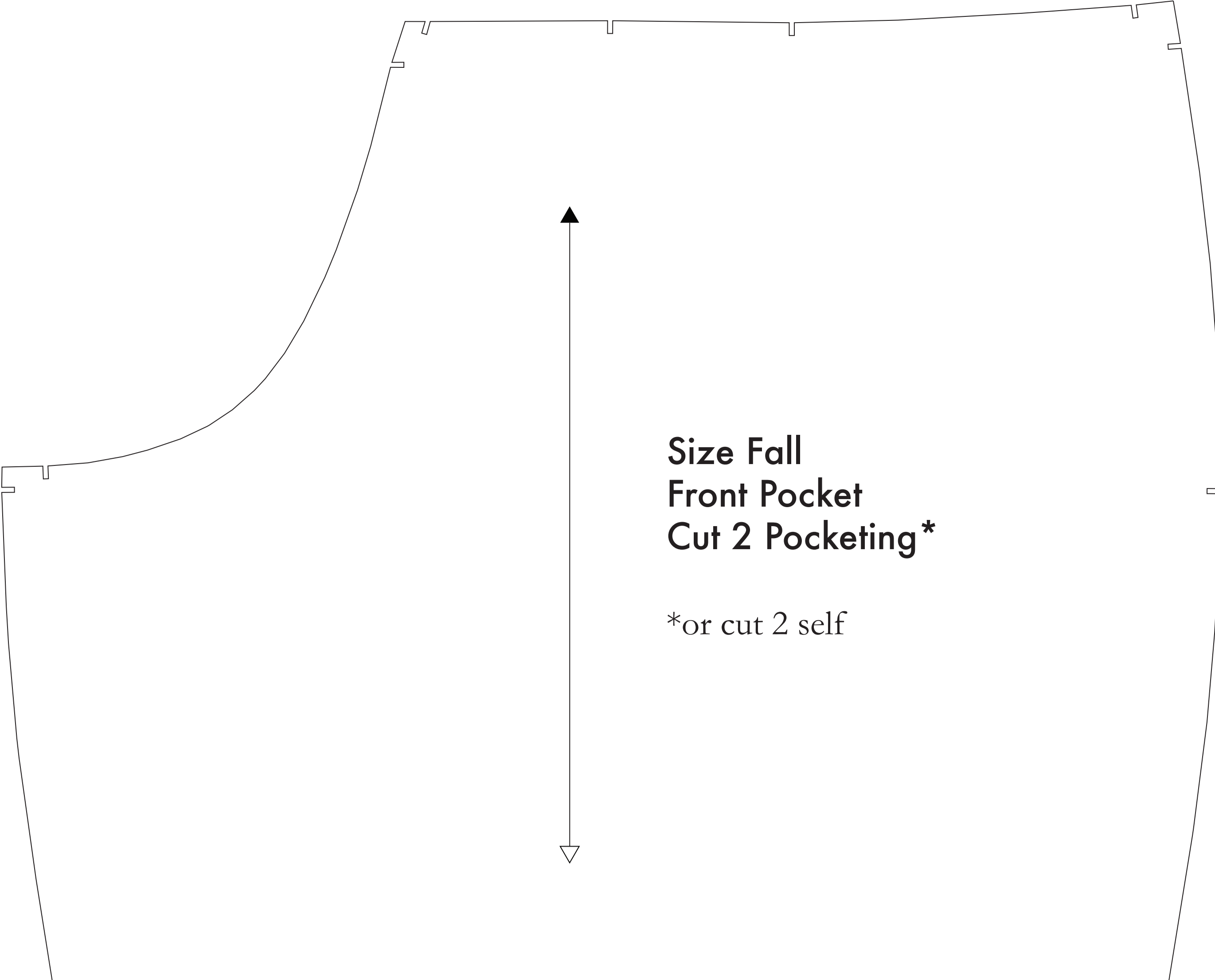
- SUPPLIES NEEDED**
- 3 1/4 YARDS OF 54" WIDE FABRIC
 - SHARP NON-SEPARATING ZIPPER
 - REMOVABLE MARKING MEDIUM (chalk, wax, tailor's lock, etc.)
 - 1/2" ZIPPER
 - THREAD
 - SEWING MACHINE
- OPTIONAL:**
- 1/2" BIAS TAPE OF THINNER POCKET FABRIC
 - FUSIBLE INTERFACING

- CUTTING INSTRUCTIONS**
1. Print pattern. You can print this document (and on sheets of standard size paper and tape the pieces together, or print on a wide-format printer (30" or wider). Print sheets after this service fee approximately \$0.25. If available to you, the PDF recommendations will format printing.
 2. Once your patterns are printed, cut along the outermost rectangle to remove any excess paper. This template should fit approximately 34" wide or larger pieces of fabric that has been folded in half. If your fabric is less than 34" wide:
NOTE: A. For maximum width, the pattern is laid out flat before they are cut in a direction. Flat fabric with creases, such as velvet or corduroy or fabric with a clear directional print (e.g., plaid or stripes), should be laid out flat without folding. The narrow border keeps the fabric from unraveling or fraying. Other B has an edge that overflows onto the top and bottom, or clearly finished low will be found. Instead of the edge of the paper or excess in the bottom, frequently differs from the main body of the fabric.
 3. Place the paper template on top of your fabric, matching the folded edge of the fabric with the side of the paper marked "Folded edge."
 4. Trace the pattern throughout the template, pinning together both layers of fabric as well as the paper.
 5. Cut around the perimeter of each piece.
 6. Lay the paper on a flat, clean surface and use a ruler to mark the center lines, making sure to not step beyond the end of the 1" shape.
 7. Lay out each cut piece, marking all the pattern pieces. Some markers (such as tailor's chalk) may also be used.
NOTE: If you're using a marking tool, you will need to mark the pattern. Some markers (such as tailor's chalk) may also be used.
This square should be, or markings, are indicated by the following guide:
OPTIONAL: Use fusible interfacing pieces (see **NOTE C** for more info). Pattern pieces that use fusible will be marked with the direction "Cut 2 Fusible" or "Cut 1 Fusible". These pieces are: Collar Fly, Fly Facing, Front Pocket Facing, and Front Pocket Backing. To use the fusible, lay the marked piece with the glue side facing up, then place your pattern down and cut around the perimeter of each piece and mark.
 8. Cut the Front Pocket Bag out of lighter weighting material. If you are not using a pocketing material, then the Front Pocket Bag may be cut straight from other pattern pieces. *Padding is used in other parts in cases of thicker material - You will find a sample of padding in any part of this page.*

NOTE A: FABRIC LESS THAN 34" WIDE
If you are using fabric that is less than 34" wide, you will need to mark each piece with directional lines to be sure that each piece is cut in the correct direction. The narrow border keeps the fabric from unraveling or fraying. Other B has an edge that overflows onto the top and bottom, or clearly finished low will be found. Instead of the edge of the paper or excess in the bottom, frequently differs from the main body of the fabric.

NOTE B: FABRIC WITH NAP OR DIRECTIONAL PATTERN
If you are using fabric with a nap or directional pattern, you will need to mark each piece with directional lines to be sure that each piece is cut in the correct direction. The narrow border keeps the fabric from unraveling or fraying. Other B has an edge that overflows onto the top and bottom, or clearly finished low will be found. Instead of the edge of the paper or excess in the bottom, frequently differs from the main body of the fabric.

NOTE C: USING FUSIBLE INTERFACING
Fusible interfacing is a material that is used to stiffen, stabilize, and adhere pattern pieces to fabric. When the fabric is marked with the appropriate symbols, you will need to use the interfacing. Some markers (such as tailor's chalk) may also be used. This square should be, or markings, are indicated by the following guide:
OPTIONAL: Use fusible interfacing pieces (see **NOTE C** for more info). Pattern pieces that use fusible will be marked with the direction "Cut 2 Fusible" or "Cut 1 Fusible". These pieces are: Collar Fly, Fly Facing, Front Pocket Facing, and Front Pocket Backing. To use the fusible, lay the marked piece with the glue side facing up, then place your pattern down and cut around the perimeter of each piece and mark.



Before cutting your fabric measure this square to make sure that the pattern is scaled correctly.*

*Some printers will print and automatically scale large width images which will affect the fit.

The inner square should measure 4" x 4"

The outer square should measure 12cm x 12cm