



JUMPSUIT CUTTING INSTRUCTIONS
©2020 Jumpsuit Cutting Instructions, LLC
 WWW.JUMPSUIT.IT

- SUPPLIES NEEDED**
- 3 YARDS OF 54" WIDE FABRIC
 - SHARP SCISSORS
 - REMOVABLE MARKING MEDIUM (chalk, wax, tailor's tack, etc.)
 - 1 - 24" NONSEPARATING ZIPPER
 - THREAD
 - SEWING MACHINE
- Optional:*
- 1/2 YARD OF THINNER POCKET FABRIC
 - FUSIBLE INTERFACING

CUTTING INSTRUCTIONS

- Print pattern. You can print this document dual on sheets of standard size paper and tape the pieces together, or print on a wide format printer (36" or wider). Print sheet offset this way for approximately 31.2. If available to you, the BIDS recommends wide format printing.
- Once your pattern is printed, cut along the contour or straight to remove any excess paper. This template should fit exactly on a 54" wide or larger piece of fabric that has been folded in half. If your fabric is less than 54" wide see **NOTE A**. For maximum yield this pattern is laid out for fabric that does not have a direction. For fabric with a nap, such as velvet or corduroy or fabric with a clear directional print see **NOTE B**.
- Fold your fabric in half along the lengthwise grain matching selvage edge or selvage edge. Schedule in the self-directional edge of fabric. This narrow border keeps the fabric from unraveling or fraying. Often it has an edge that resembles very fringe, though not as frequently, a clearly finished line will be found. Avoid this edge in your cut pieces as the texture (especially if different from the main body of the fabric).
- Place the paper template on top your fabric, matching the folded edge of the fabric with the side of the paper marked "folded edge".
- Place pins throughout the template pinning together both layers of fabric as well as the paper.
- Cut around the perimeter of each piece.
- Leaving the pins in place, you will next need to snip each of the notches, taking care to not snip beyond the end of the 1/4" depth.

Notches are the 1/4" depth markings that are found throughout the pattern. Some notches indicate seam allowances (self, side, collar and fly) and some are for pattern pieces with a nap.

Mark all notches and fold lines. Using a pin, bring together both layers of fabric and the pattern, mark the corner of each notched hole with chalk, wax or other removable, nonpermanent tool. A tailor's tack may also be used.

This corner fold line is an marking, not indicated by the following symbol. They will be located in the Back, Back, Back, Back, and of your pattern.

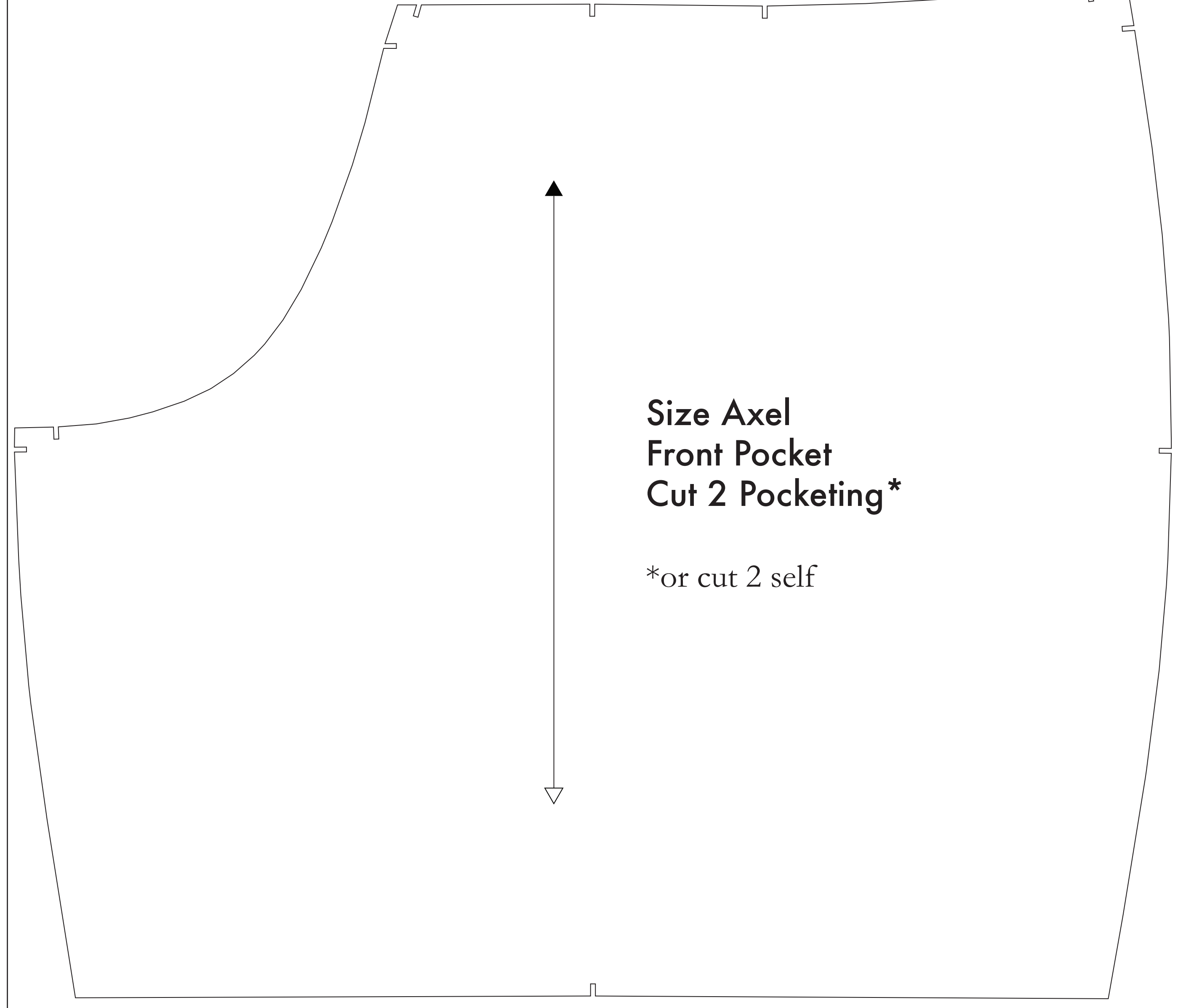
*(OPTIONAL) For fusible interfacing pieces (see **NOTE C** for more info). Pattern pieces that use fusible will be marked with the direction "Cut 2 Fusible" or "Cut 1 Fusible". These pieces are the Collar, Fly, Fly Facing, Front Pocket Facing, and Front Pocket Backing. To cut the fusible, lay the material down with the glue side facing up, then place your pattern down and cut around the perimeter of each piece and notch.*

For the Front Pocket Bag cut of a lighter weight material. If you are not using a pocketing material, then the Front Pocket Bag may be cut alongside your other pattern pieces. Pocketing is used in robes built in cases of thicker material - for all other cases of pocketing on any part of the pants.

NOTE A: FABRIC LESS THAN 54" WIDE
 If your fabric is less than 54" wide you will need to cut each pattern piece individually from the paper template, and piece them together on the fabric. Make sure to preserve the grain direction of the fabric. The quantity of pieces and pattern size will need to be adjusted to match the width of your fabric. To find the correct quantity look for the "fold" line on the pattern. The quantity of pieces and pattern size will need to be adjusted to match the width of your fabric. To find the correct quantity look for the "fold" line on the pattern. The quantity of pieces and pattern size will need to be adjusted to match the width of your fabric. To find the correct quantity look for the "fold" line on the pattern.

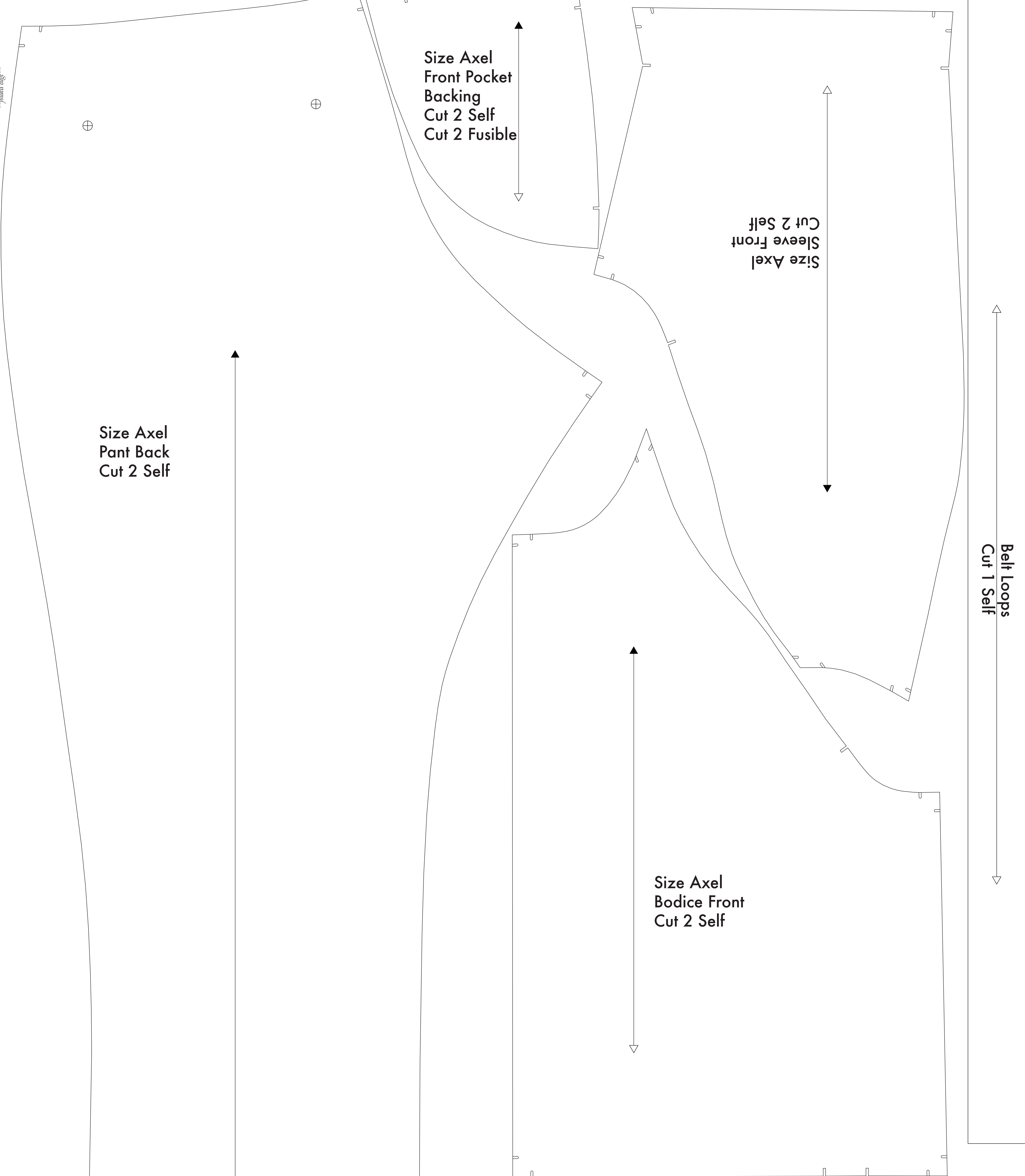
NOTE B: FABRIC WITH NAP OR DIRECTIONAL PATTERN
 For fabric with a nap or directional pattern, you will need to cut each pattern piece individually from the paper template, and piece them together on the fabric. Make sure to preserve the grain direction of the fabric. The quantity of pieces and pattern size will need to be adjusted to match the width of your fabric. To find the correct quantity look for the "fold" line on the pattern. The quantity of pieces and pattern size will need to be adjusted to match the width of your fabric. To find the correct quantity look for the "fold" line on the pattern.

NOTE C: USING FUSIBLE INTERFACING
 Fusible interfacing is a material that is used to reinforce, stabilize, and add structure to garments. With the use of fusible interfacing to extend the lifespan of your fabric, you will need to cut each pattern piece individually from the paper template, and piece them together on the fabric. Make sure to preserve the grain direction of the fabric. The quantity of pieces and pattern size will need to be adjusted to match the width of your fabric. To find the correct quantity look for the "fold" line on the pattern. The quantity of pieces and pattern size will need to be adjusted to match the width of your fabric. To find the correct quantity look for the "fold" line on the pattern.



Size Axel Front Pocket Cut 2 Pocketing*

*or cut 2 self



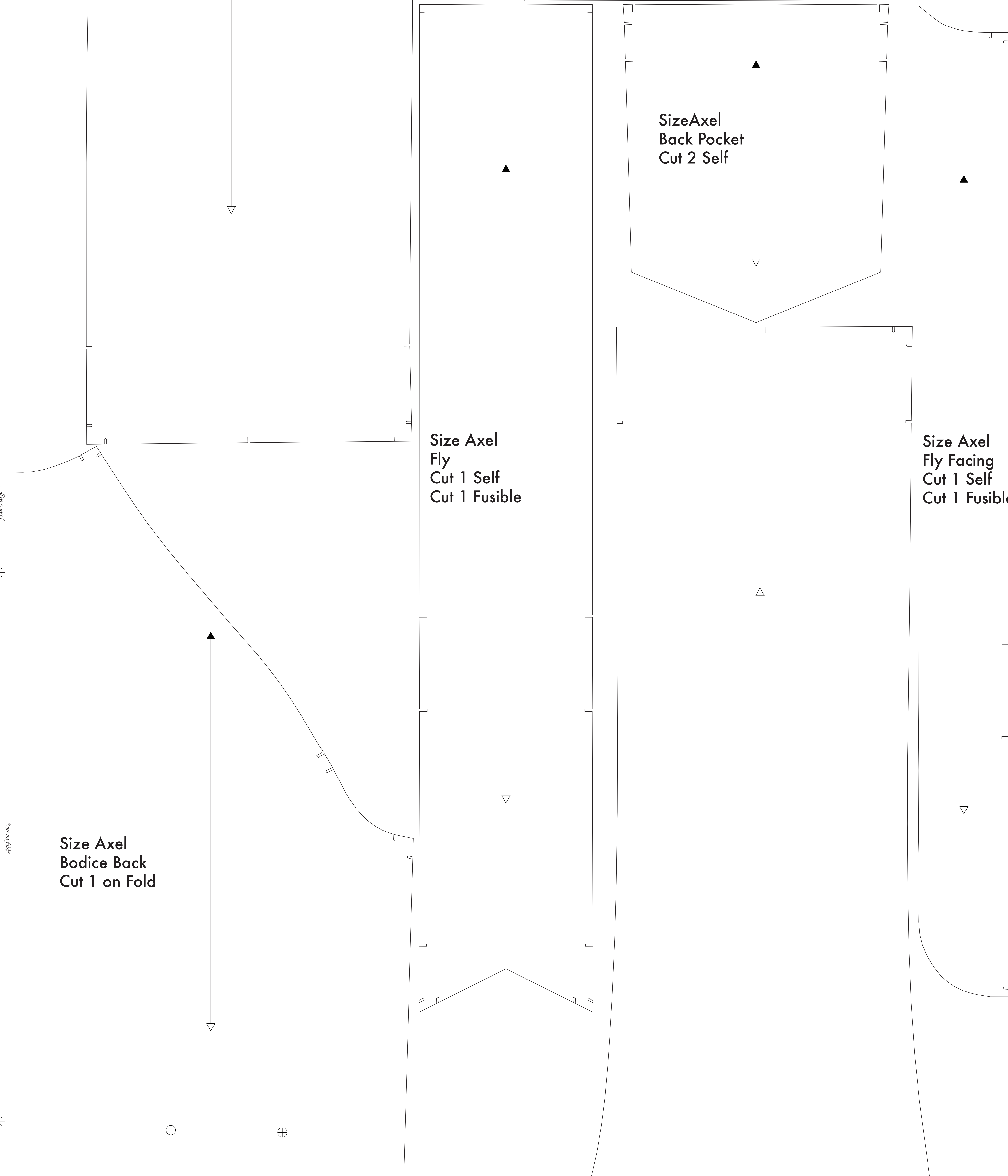
Size Axel Front Pocket Backing Cut 2 Self Cut 2 Fusible

Size Axel Sleeve Front Cut 2 Self

Belt Loops Cut 1 Self

Size Axel Pant Back Cut 2 Self

Size Axel Bodice Front Cut 2 Self

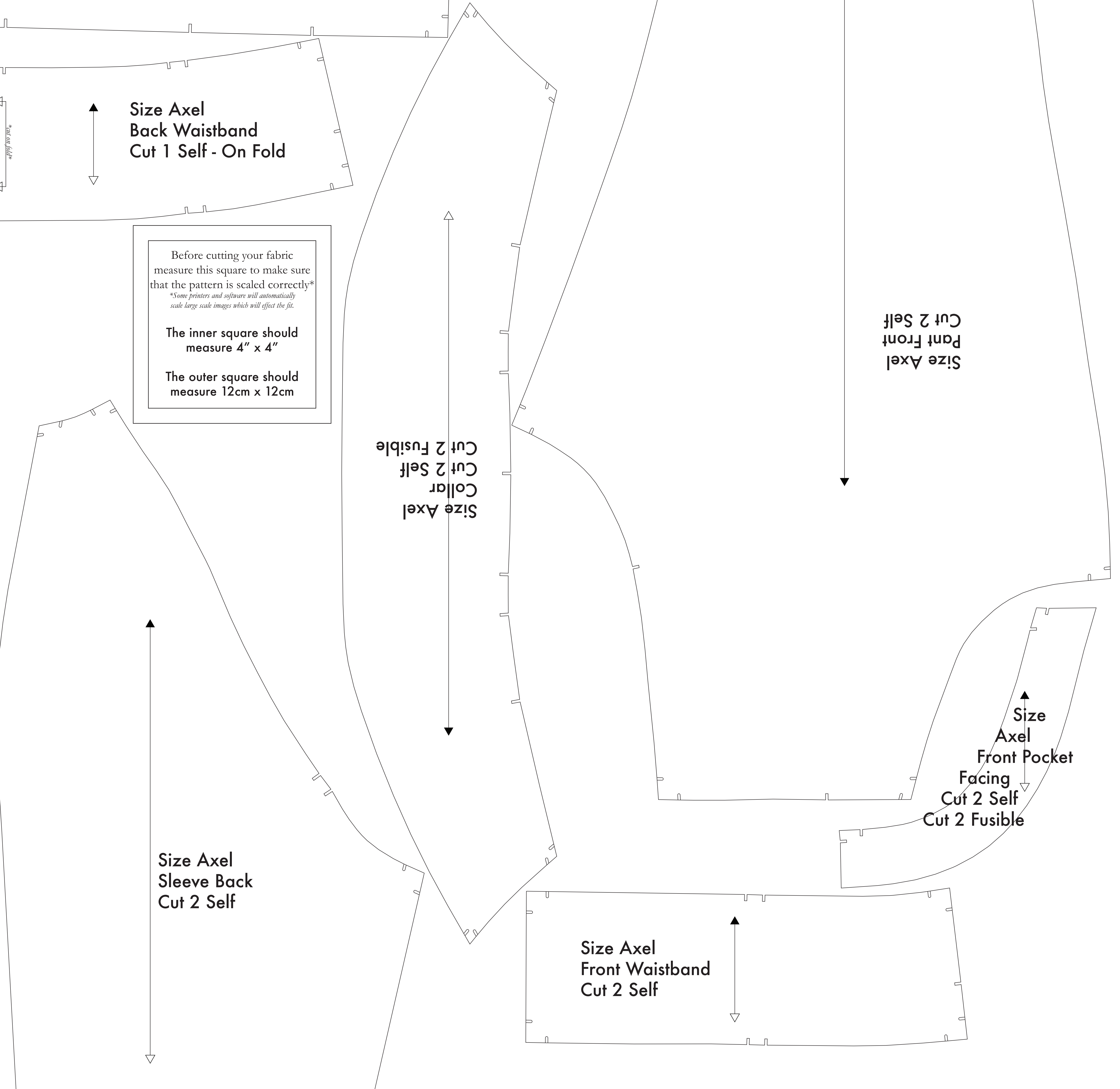


Size Axel Fly Cut 1 Self Cut 1 Fusible

Size Axel Fly Facing Cut 1 Self Cut 1 Fusible

Size Axel Back Pocket Cut 2 Self

Size Axel Pant Front Cut 2 Self



Size Axel Back Waistband Cut 1 Self - On Fold

Before cutting your fabric measure this square to make sure that the pattern is scaled correctly*
 *Some printers and software will automatically scale large web images which will affect the fit.
 The inner square should measure 4" x 4"
 The outer square should measure 12cm x 12cm

Size Axel Collar Cut 2 Self Cut 2 Fusible

Size Axel Front Pocket Facing Cut 2 Self Cut 2 Fusible

Size Axel Sleeve Back Cut 2 Self

Size Axel Front Waistband Cut 2 Self