

- SUPPLIES NEEDED**
- 2 YARDS OF 1/2" WIDE FABRIC
 - SHARP SCISSORS
 - REMOVABLE MARKING MEDIUM (chalk, wax, tailor's tack, etc.)
 - 1 - 26" NON-SEPARATING ZIPPER
 - THREAD
 - SEWING MACHINE (optional)
 - 1/2 YARD OF THINNER POCKET FABRIC
 - FUSIBLE INTERFACING

- CUTTING INSTRUCTIONS**
1. Print pattern. You can print this document tiled on sheets of standard size paper and tape the pieces together, or print on a wide-format printer (36" or wider). Print shops offer this service for approximately \$12. If available to you, the R25 recommends wide-format printing.
 2. Once your pattern is printed, cut along the outermost rectangle to remove any excess paper. This template should fit exactly on a 4" thick or larger piece of fabric that has been folded in half. If your fabric is less than 4" wide use **NOTE A**. For maximum detail this pattern is laid out for fabric that does not have a direction. For fabric with a nap, such as velvet or corduroy or fabric with a clear directional print use **NOTE B**.
 3. Fold your fabric in half along the lengthwise grain matching selvage edge to selvage edge. Subdivide in the self-finished edge of fabric. This serves to help keep the fabric from stretching or fraying. There is an edge that smooths any frays, though not as frequently, a clearly finished line will be found. Avoid this edge in your cut pieces as the texture frequently differs from the main body of the fabric.
 4. Place the paper template on top your fabric, matching the folded edge of the fabric with the side of the paper marked "folded edge".
 5. Place pins throughout the template pinning together both layers of fabric as well as the paper.
 6. Cut around the perimeter of each piece.
 7. Leaving the pins in place, you will need need to strip each of the notches, taking care to not strip beyond the end of the 1" digit.
 8. Mark all inner or cut-backs. Using a pin, bring together both layers of fabric and the pattern, mark the center of each notch with chalk, soap or other removable, nonpermanent mark. A light's mark may also be used. *This marker will fade, so markings are intended to be following symbols.*
 9. **CAUTION:** Do not fuse fusible interfacing pieces to **NOTE C** for more info). Pattern pieces that use fusible will be marked with the direction "Cut 2 Fusible" or "Cut 1 Fusible". These pieces are: the Collar, Fly Facing, Front Pocket Facing, and Front Pocket Backing. To cut the fusible, lay the material down with the glue side facing up, then place your pattern down and cut around the perimeter of each piece and notch.
 10. Cut the Front Pocket Bag piece of a higher pocketing material. If you are not using a pocketing material, then the Front Pocket Bag may be cut alongside your other pattern pieces. Pocketing is used to reduce bulk in case of thicker material - You will not see enough of pocketing in any part of this page.

NOTE A: FABRIC LESS THAN 4" WIDE

If your fabric is less than 4" wide then you will need to cut each pattern piece individually from the appropriate width of fabric or from two fabric widths once you have the pattern pieces so that there is enough width. The quantity necessary will vary by piece and by fabric.

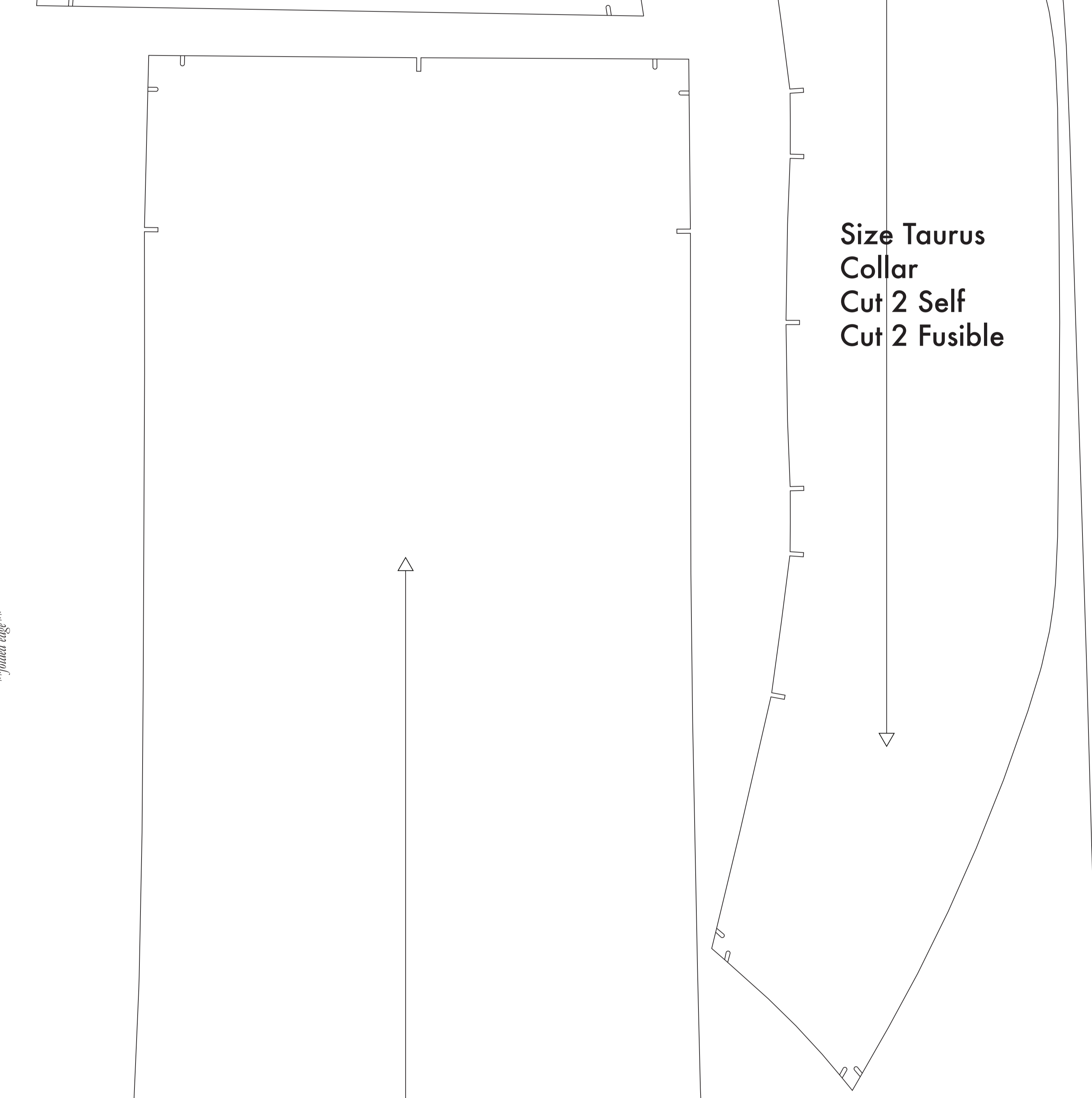
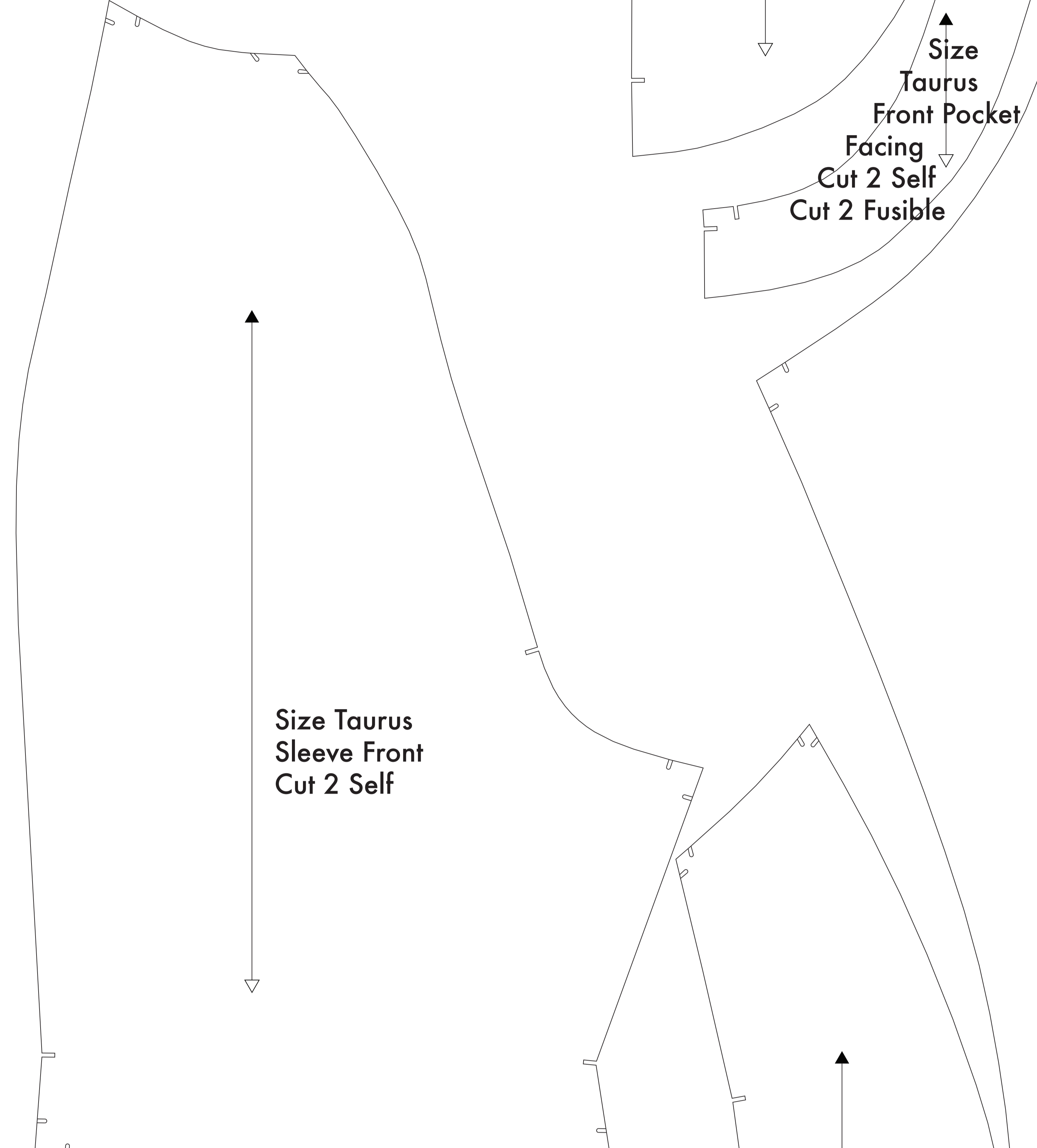
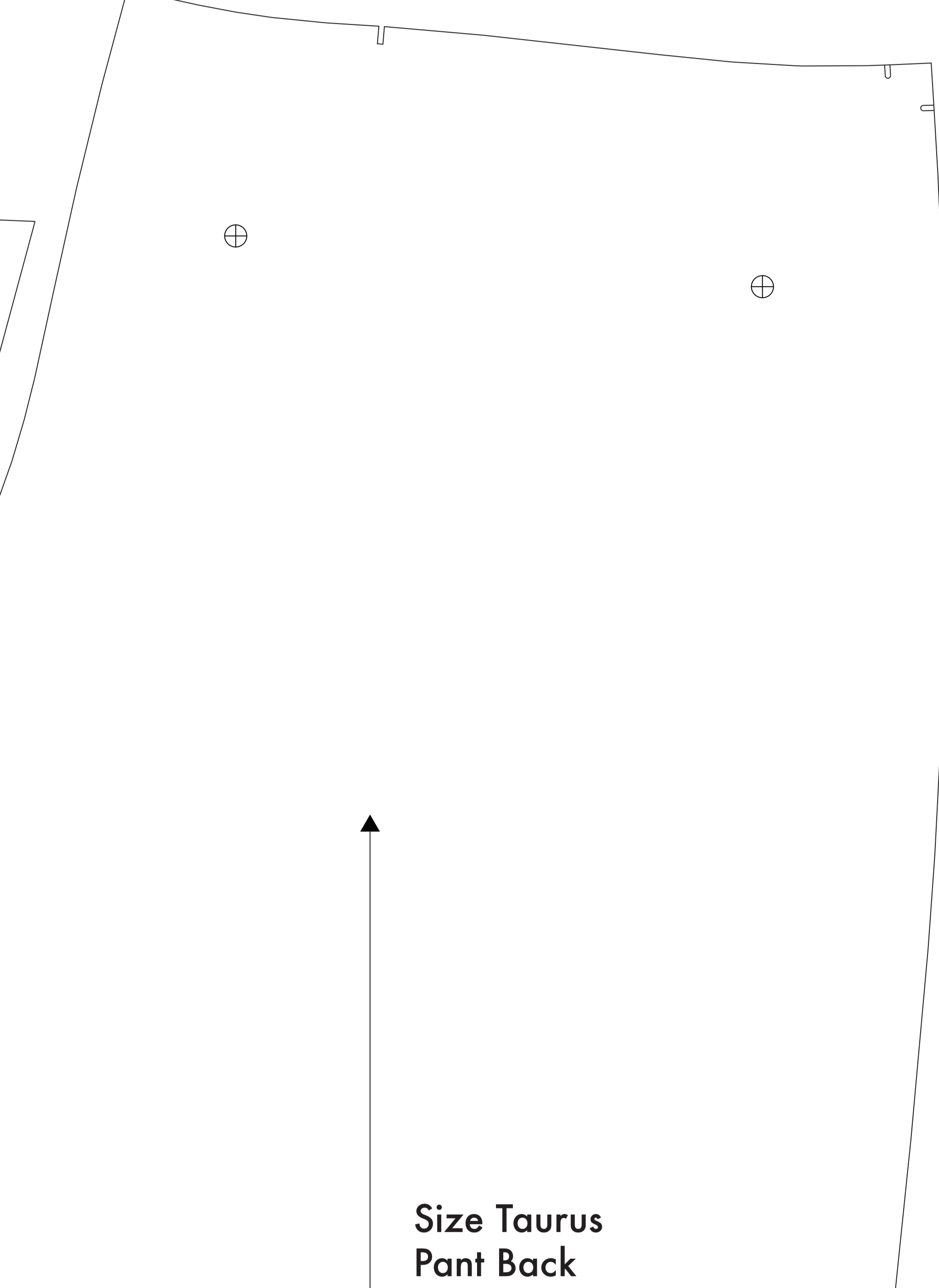
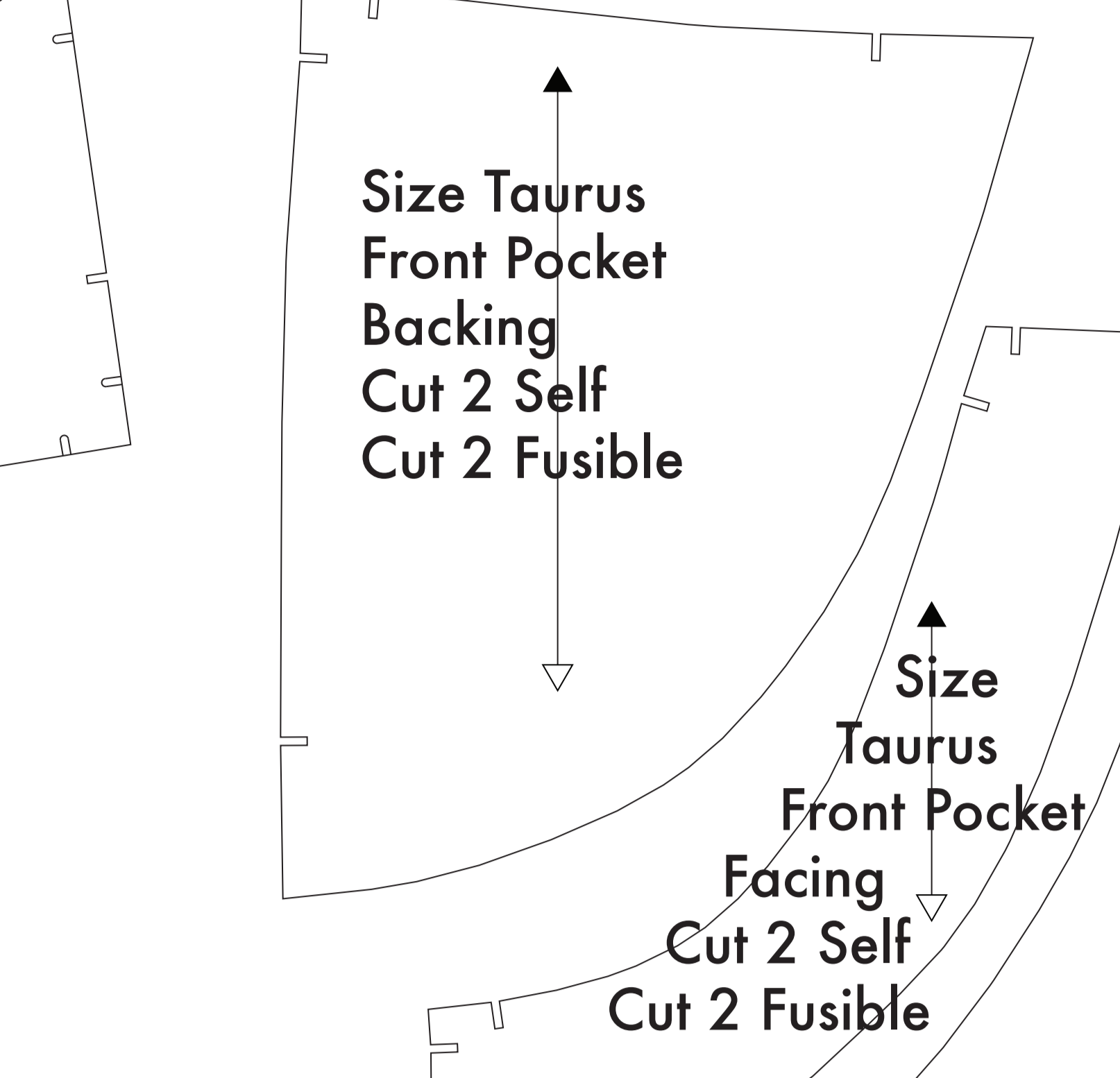
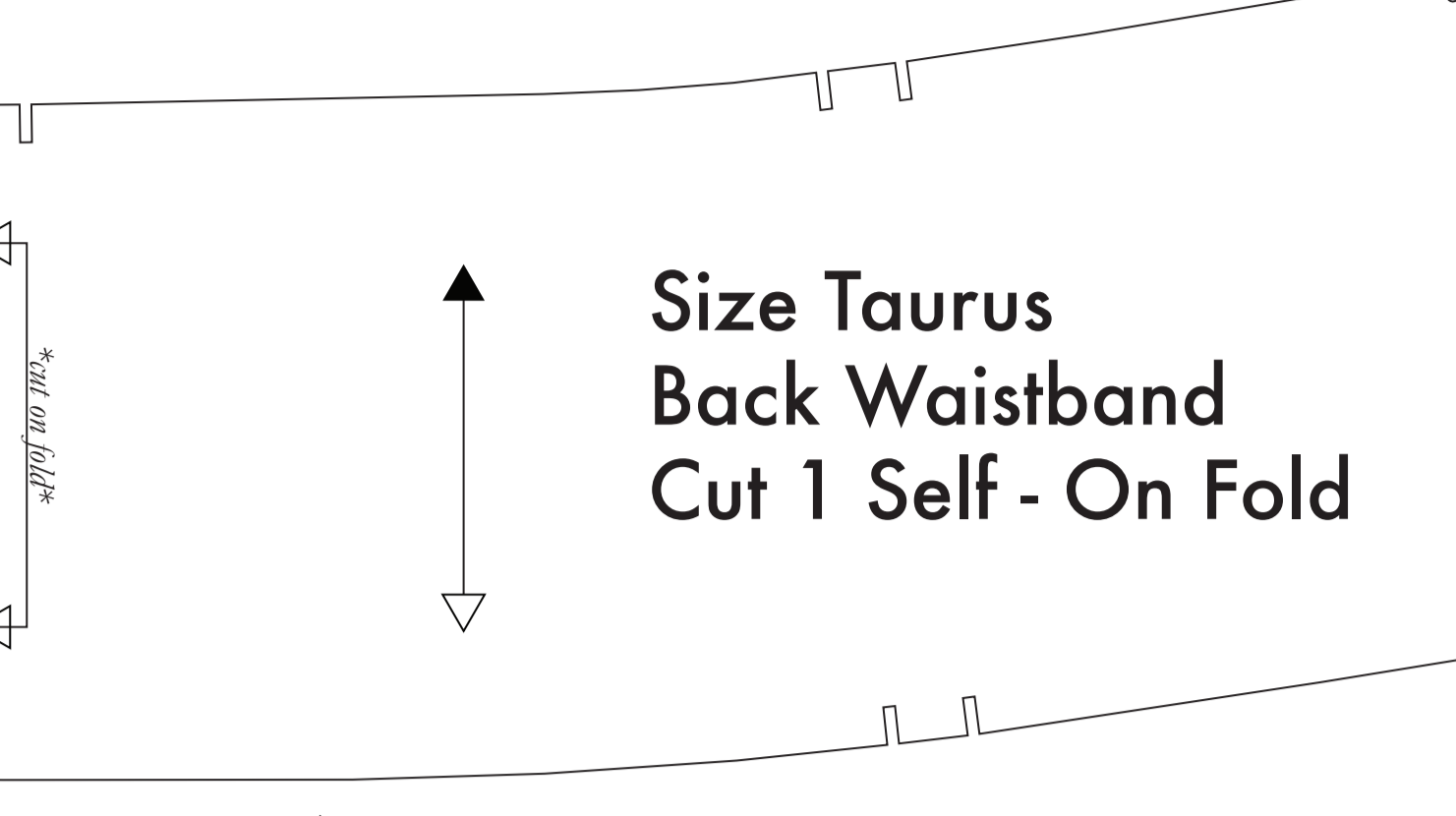
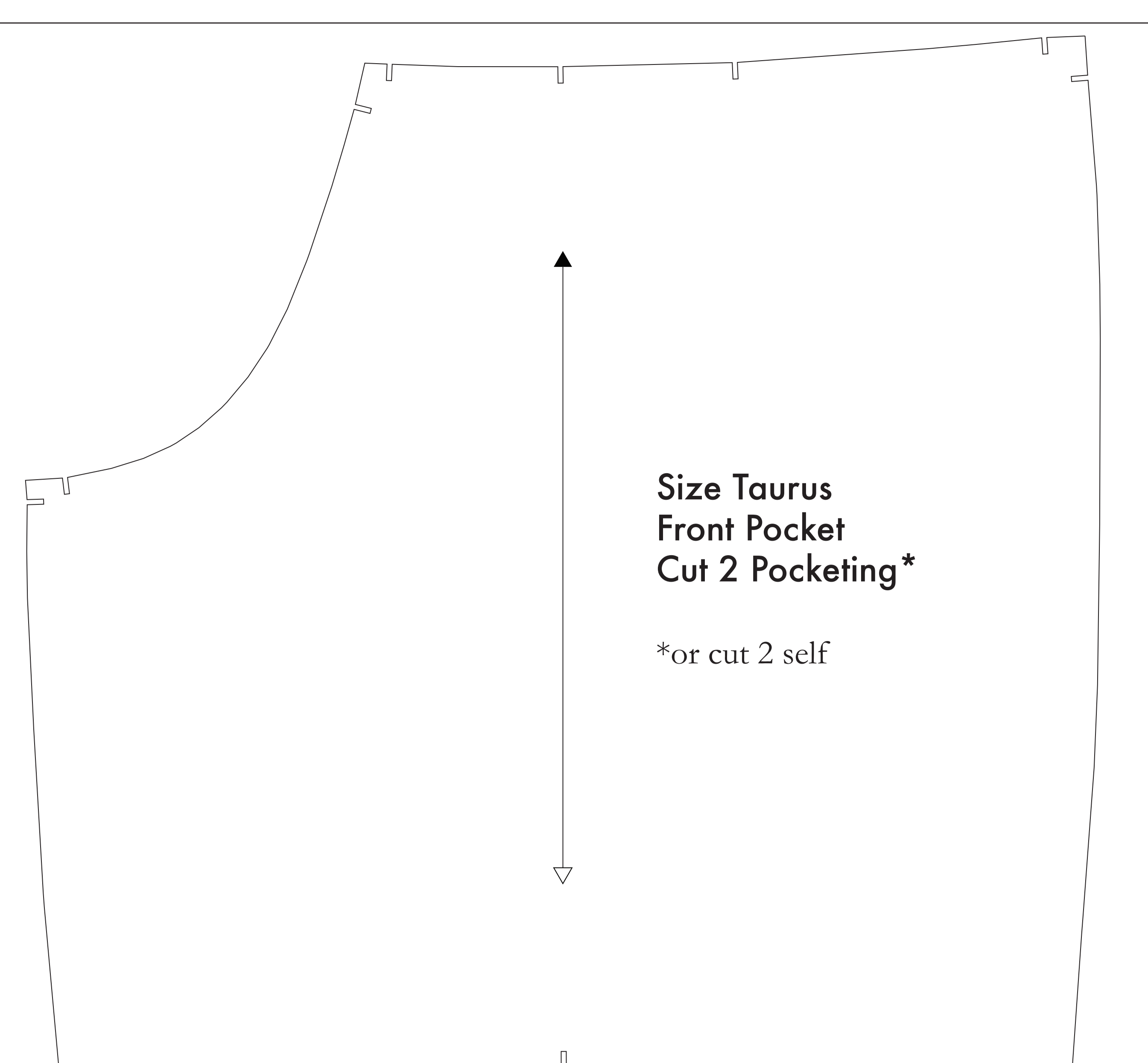
For pieces that are wider than the direction of grain of the fabric, when marking, lay on one fabric then fold the fabric in half to mark the selvage edge of one fabric. To ensure that the grain is parallel across the fabric, then mark the selvage with the bottom corner. Then the edge of your fabric then the pattern piece is correctly positioned.

NOTE B: FABRIC WITH NAP OR DIRECTIONAL PATTERN

For fabric with a nap such as velvet or corduroy, fabric with a directional print, or the marking paper, mark the fabric with the nap or the pattern piece individually first by then cut on one fabric, ensuring that the fold line runs toward the self-finished points in the same direction.

NOTE C: USING FUSIBLE INTERFACING

Fusible interfacing is used to stiffen and stabilize pattern pieces in a garment. While the use of fusible interfacing is optional, the finished items are more durable and better looking. Weight and source of fusible interfacing is the responsibility of the USER.



Before cutting your fabric measure this square to make sure that the pattern is scaled correctly*

*Some printers and software will automatically scale large web images which will affect the fit.

The inner square should measure 4" x 4"

The outer square should measure 12cm x 12cm

