

JUMPSUIT CUTTING INSTRUCTIONS
 DOCUMENT: JUMPSUIT_CUTTING_INSTRUCTIONS_V1.0
 WWW.ZIPPERKIT

SUPPLIES NEEDED

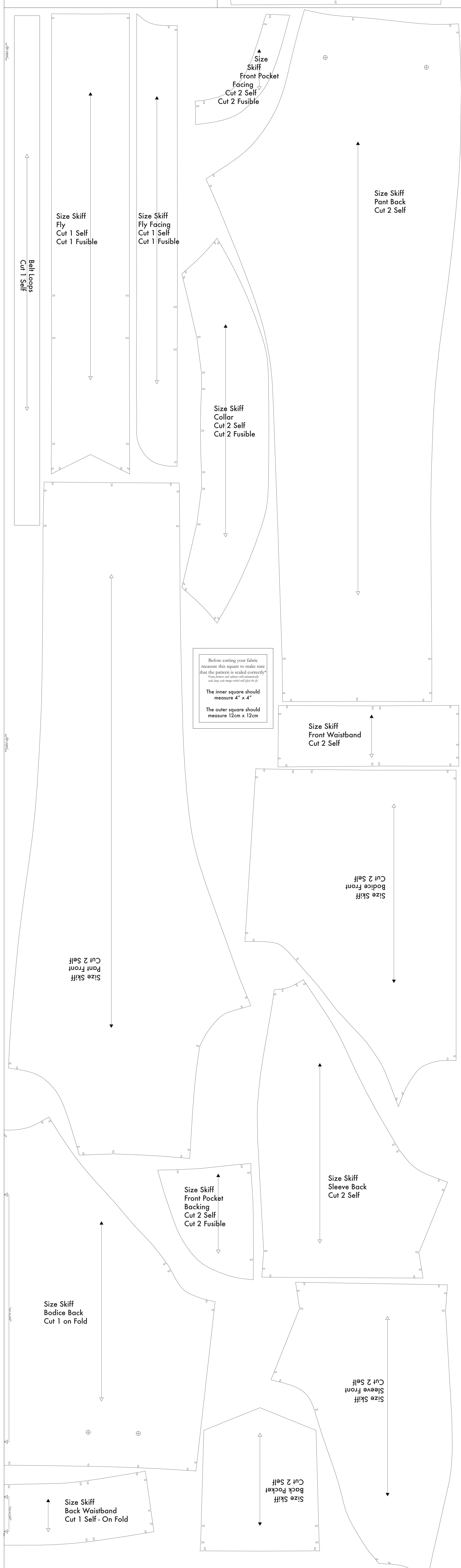
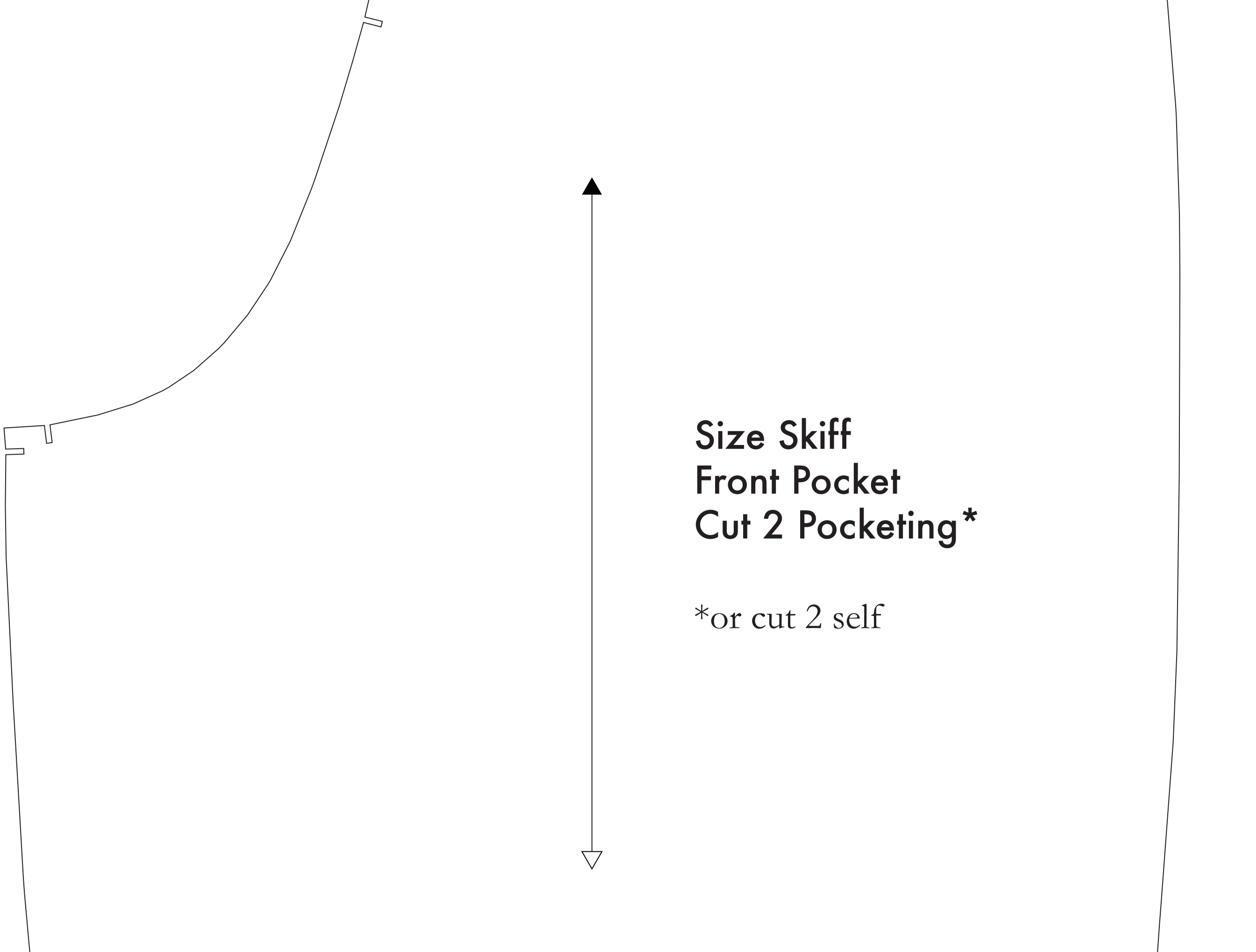
- 3 YARDS OF 54" WIDE FABRIC
- SHARP SCISSORS
- REMOVABLE MARKING MEDIUM (chalk, wax, tailor's tack, etc.)
- 1 - 24" NON-SEPARATING ZIPPER
- THREAD
- SEWING MACHINE

OPTIONAL

- 1/2 YARD OF THINNER POCKET FABRIC
- FUSIBLE INTERFACING

CUTTING INSTRUCTIONS

- Print pattern. You can print this document (that on sheets of standard size paper and tape the pieces together, or print on a wide-format printer (36" or wider). Print sheets offer this service for approximately \$12. If available to you, the B50 recommended wide-format printing.
- Once your pattern is printed, cut along the maximum rectangle to remove any excess paper. This template should fit exactly on a 54" wide or larger piece of fabric that has been folded in half. If your fabric is less than 54" wide:
- NOTE A:** For maximum use of the pattern, a full cut of fabric that does not have a direction. For fabric with a nap, such as velvet or corduroy or fabric with a clear directional print, you will have to cut in two directions.
- NOTE B:** Fold your fabric in half along the lengthwise grain matching selvage edge to selvage edge. Sewage in the self-finished edge of fabric. This makes bodice pieces of fabric from centering on facing. Other a line on edge that overrules any fring, though not as frequently, a clearly finished line will be found. Avoid this edge in your cut pieces as the seam (especially fabric) from the main body of the fabric.
- Place the paper template on top your fabric, matching the finished edge of the fabric with the side of the paper marked "finished edge".
- Place pins throughout the template pinning together both layers of fabric as well as the paper.
- Cut around the perimeter of each piece.
- Leaving the pins in place, you will need to strip each of the numbers, taking care to not strip beyond the end of the 1" object.
- Notes are on 1" slotted markings that are hand throughout the pattern.**
 These markings indicate seam allowances available, which where will help you do your pattern pieces with ease.
 Mark all interior and fold lines. Using a pin, bring together both layers of fabric and the pattern, mark the center of each fold line with chalk, wax or other removable, non-permanent and a tailor's tack may also be used.
 Your marker will help you, and markings are indicated by the following symbols:
 They will be found on the: Collar, Bodice Back, and Front Pocket.
 Items that are not to be marked are the: Bodice Front.
- OPTIONAL: Cut Fusible Interfacing pieces.** **NOTE C:** For more info, Pattern pieces that use fusible will be marked with the direction "Cut 2 Fusible" or "Cut 1 Fusible". These pieces are the Collar, Fly, Fly Facing, Front Pocket Facing, and Front Pocket Backing. To cut the fusible, by the marked lines with the glue side facing up, then place your pattern down and cut around the perimeter of each piece and notch.
- Cut the Front Pocket Bag out of a lighter pocketing material. If you are not using a pocketing material, then the Front Pocket Bag may be cut alongside your other pattern pieces. **Pushing it out in make hole in case of thicker material - You will find an example of pushing in one part of the page.**



Before cutting your fabric measure this square to make sure that the pattern is scaled correctly*
 *Some printers and software will automatically scale large scale images which will affect the fit.
 The inner square should measure 4" x 4"
 The outer square should measure 12cm x 12cm