

- SUPPLIES NEEDED**
- 3 1/4 YARDS OF 54" WIDE FABRIC
 - SHARP SCISSORS
 - REMOVABLE MARKING MEDIUM (chalk, wax, tailor's rock, etc.)
 - 1/2" INCH SEPARATING ZIPPER
 - THREAD
 - SEWING MACHINE
- optional:
- 1/2 YARD OF THINNER POCKET FABRIC
 - FUSIBLE INTERFACING

CUTTING INSTRUCTIONS

1. Print pattern. You can print this document flat on sheets of standard size paper and tape the pieces together, or print on a wide-format printer (36" or wider). Print shape after this service for approximately \$12. If available to you, the B2B service will format printing.
2. Trace your pattern in pencil, cut along the outermost rectangle to remove any excess paper. This template should fit exactly on 54" wide or larger pieces of fabric that have folded in half. If your fabric is less than 54" wide use **NOTE A**. For maximum yield this pattern is laid out for fabric that does not have a direction. For fabric with a nap, such as velvet or gabardine or fabric with a clear directional grain use **NOTE B**.
3. Fold your fabric in half along the lengthwise grain matching selvage edge to selvage edge. Selvage is the self-finished edge of fabric. This serves to keep the fabric from stretching or fraying when it has an edge that exceeds the fray fringe, though not as frequently, a clearly finished line will be found. Avoid this edge in your cut pieces as the texture frequently differs from the main body of the fabric.
4. Place the paper template on top of your fabric, matching the folded edge of the fabric with the side of the paper marked "folded edge".
5. Place pins throughout the template pinning together both layers of fabric as well as the paper.
6. Cut around the perimeter of each piece.
7. Leaving the pins in place, you will next need to strip each of the marks, taking care to not strip beyond the end of the fabric!

- Note on all 1. Aligned markings that are joined throughout the pattern.*
Some marks indicate seam allowances which will not strip.
Some marks indicate seam allowances which will strip you.
Some marks indicate seam allowances which will strip you.
Some marks indicate seam allowances which will strip you.
Some marks indicate seam allowances which will strip you.
Some marks indicate seam allowances which will strip you.

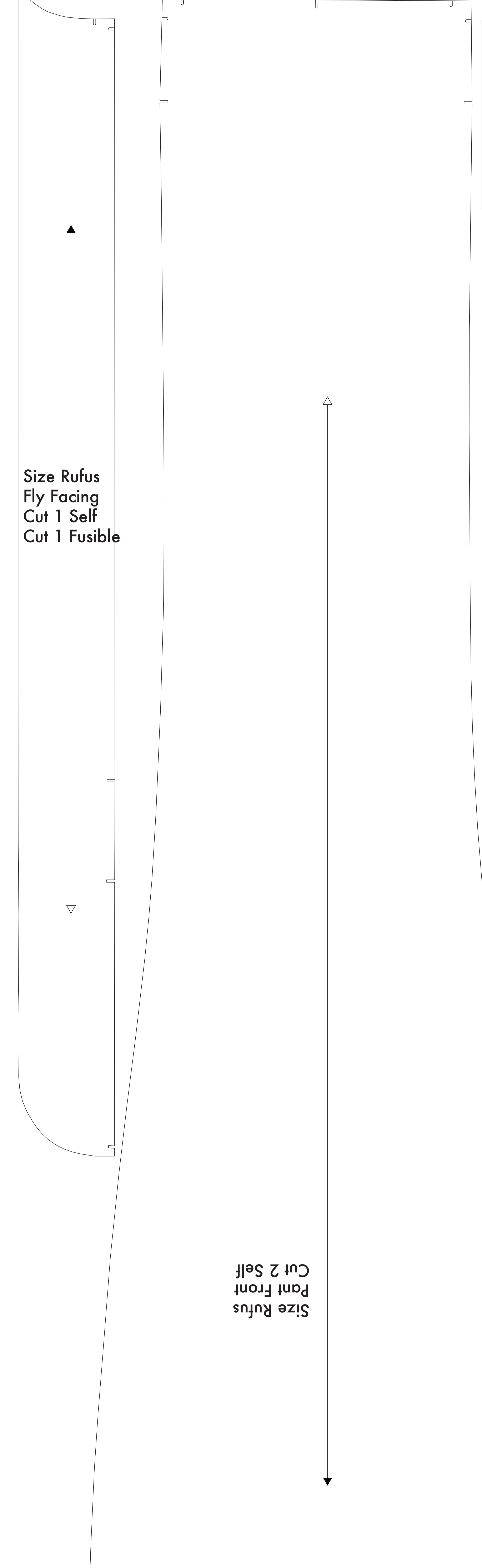
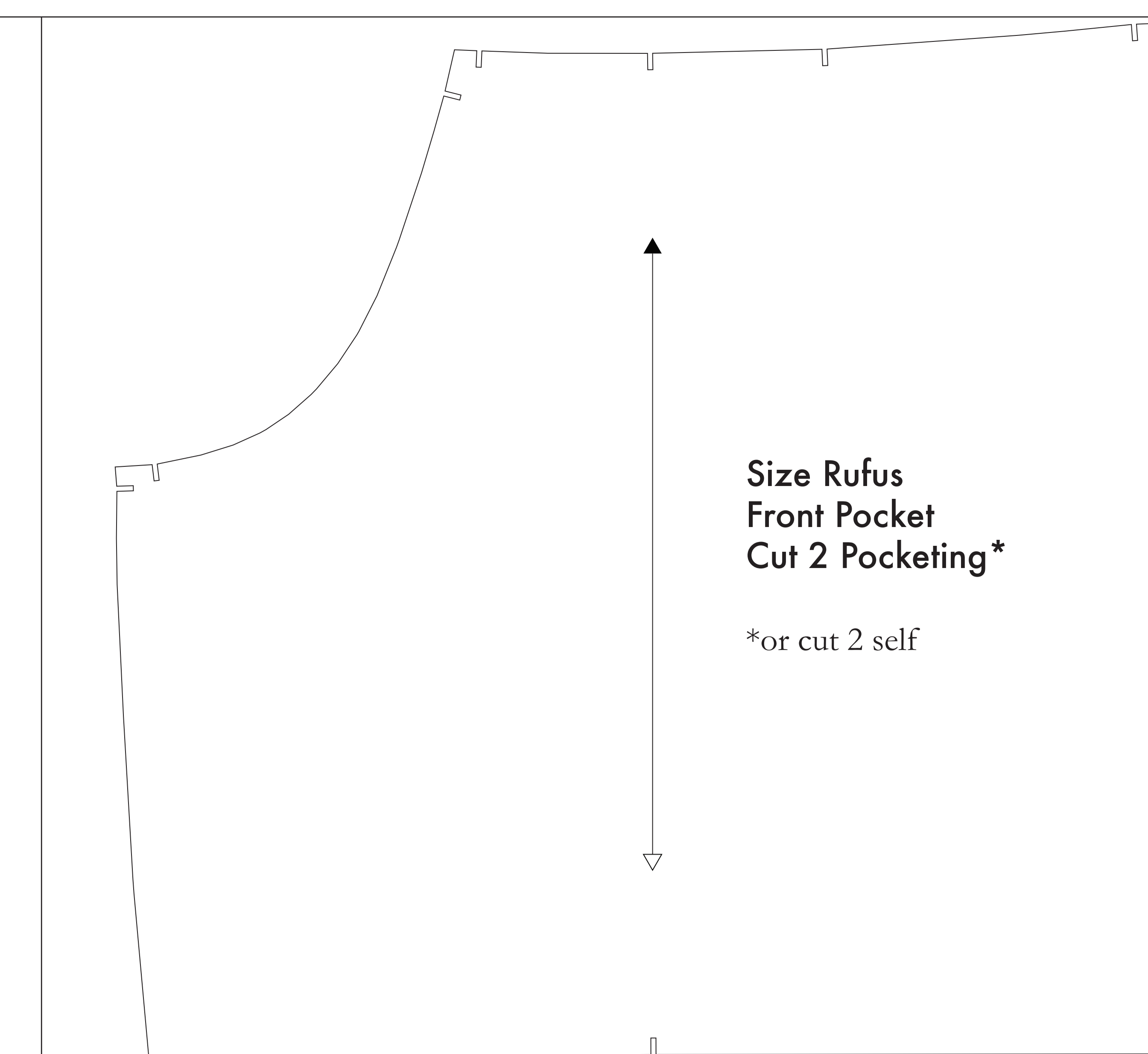
- OPTIONAL:** Cut fusible interfacing pieces (see **NOTE C** for more info). Pattern pieces that use fusible will be marked with the direction "Cut 2 Fusible" or "Cut 1 Fusible". These pieces are the Collar, Fly, Fly Facing, Front Pocket Facing, and Front Pocket Backing. To cut the fusible, lay the material down with the glue side facing up, then place your pattern down and cut around the perimeter of each piece and mark.

- NOTE:** Cut the Front Pocket Bag out of a lighter pocketing material. If you are not using a pocketing material, then the Front Pocket Bag may be cut straight over other pattern pieces. Including it and in color such as case of similar material - You will find an example of pocketing on any part of the jumps.

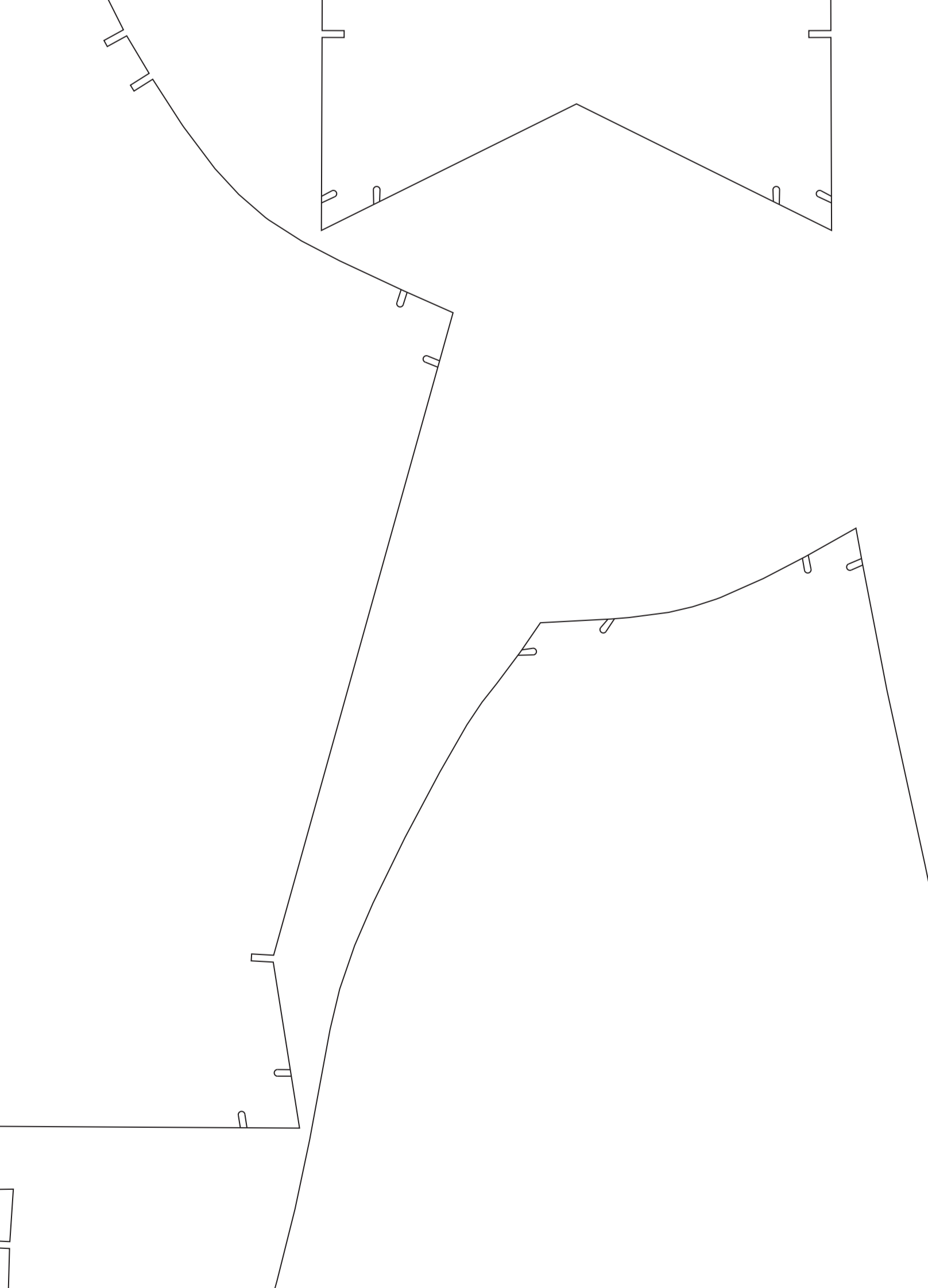
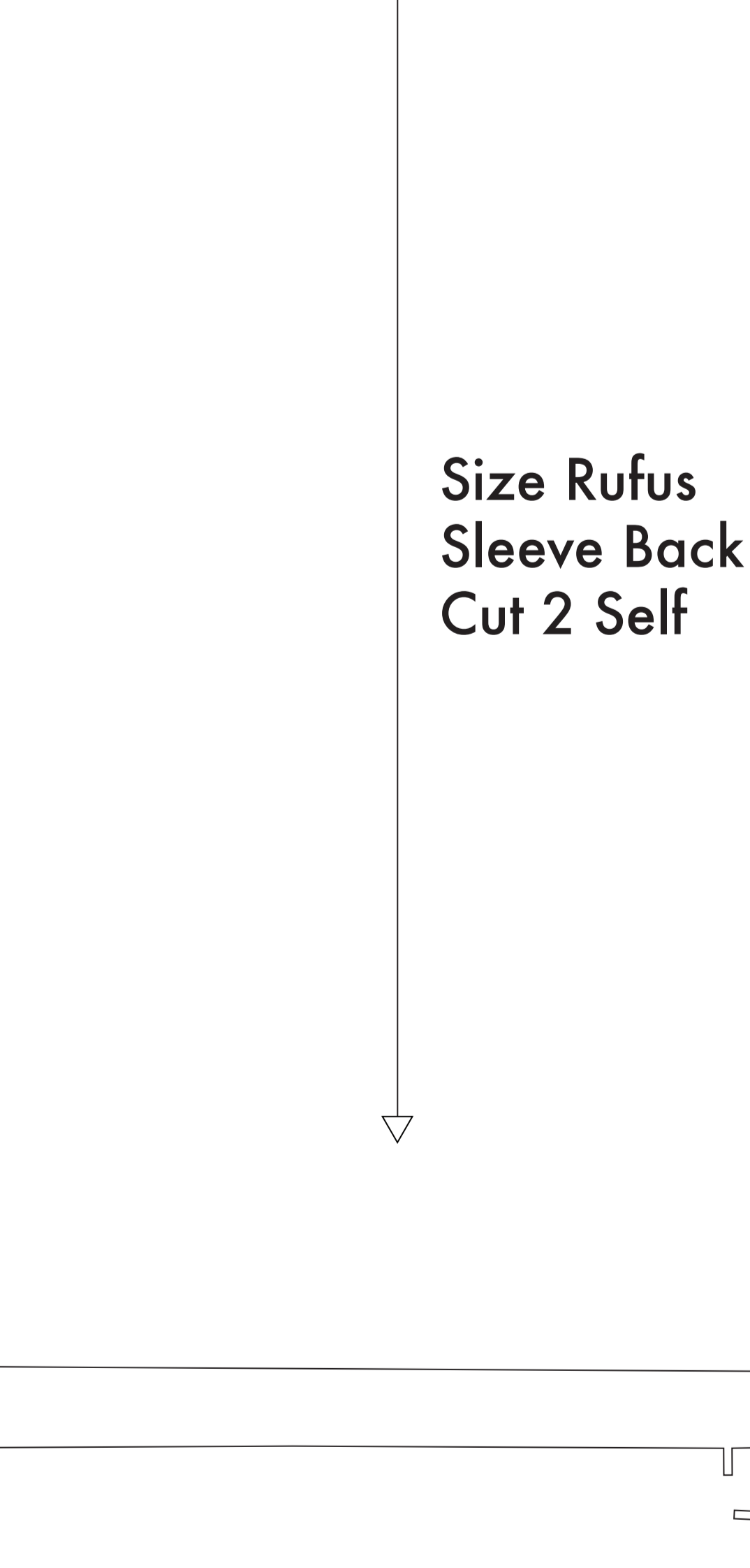
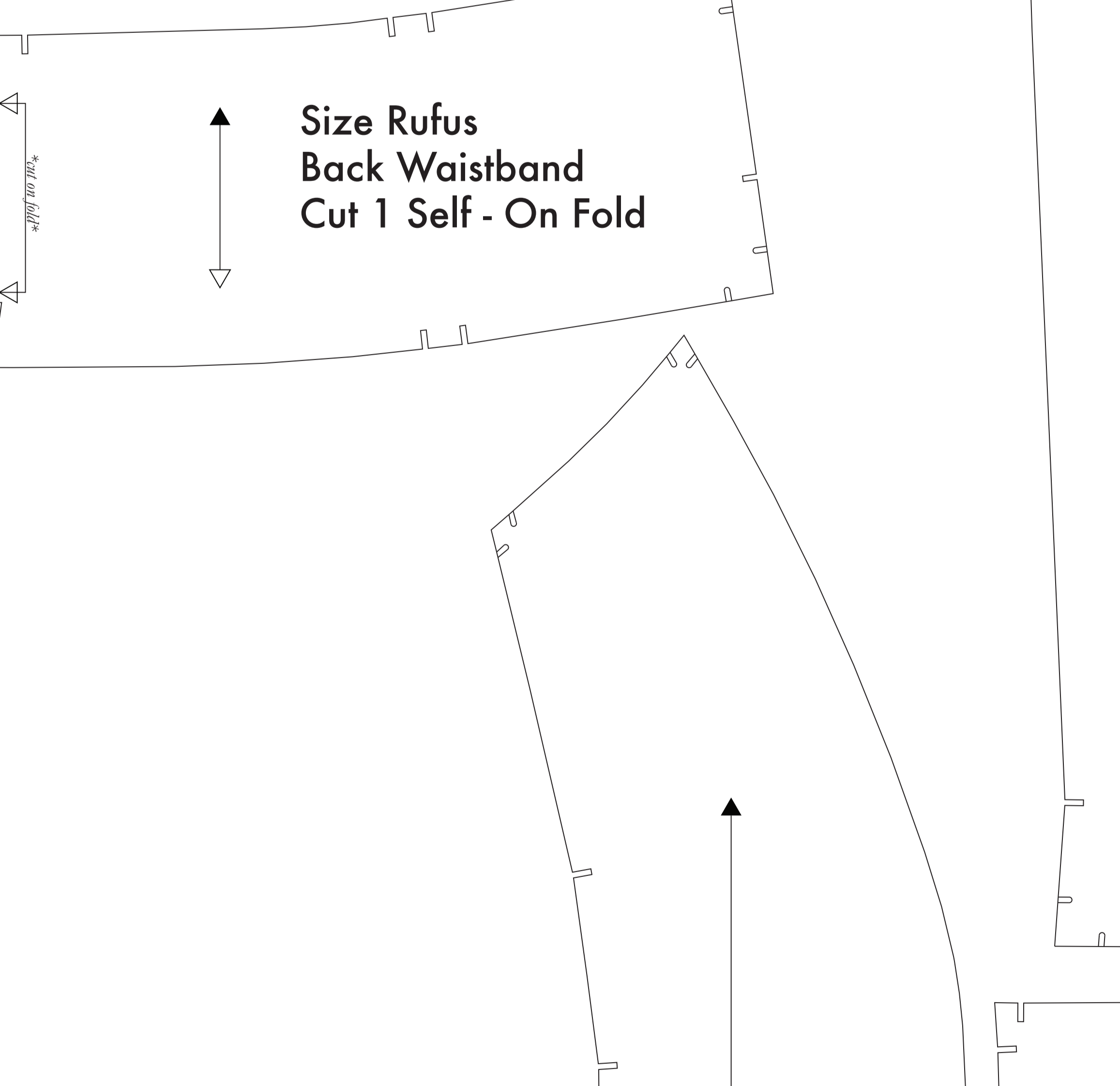
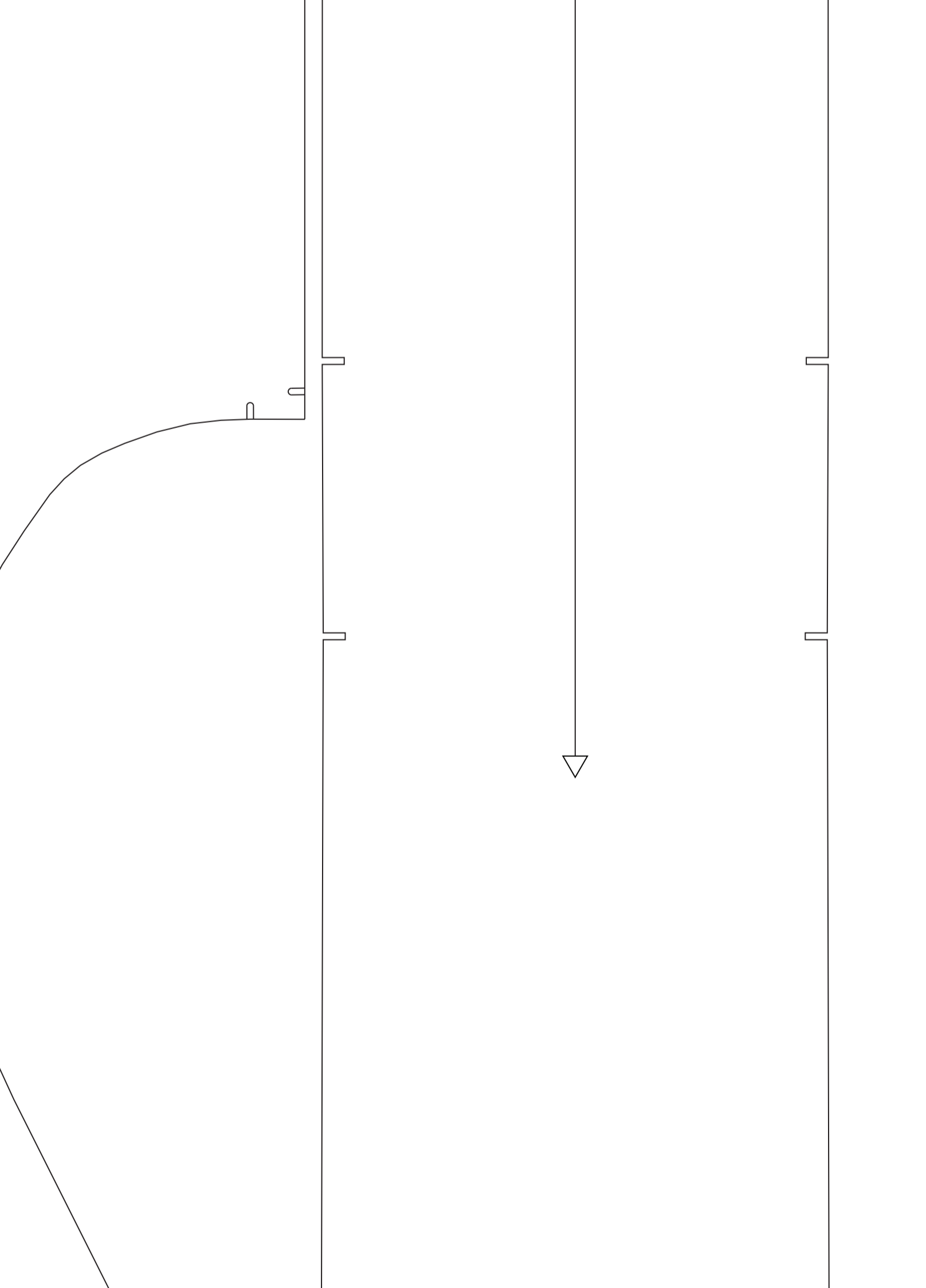
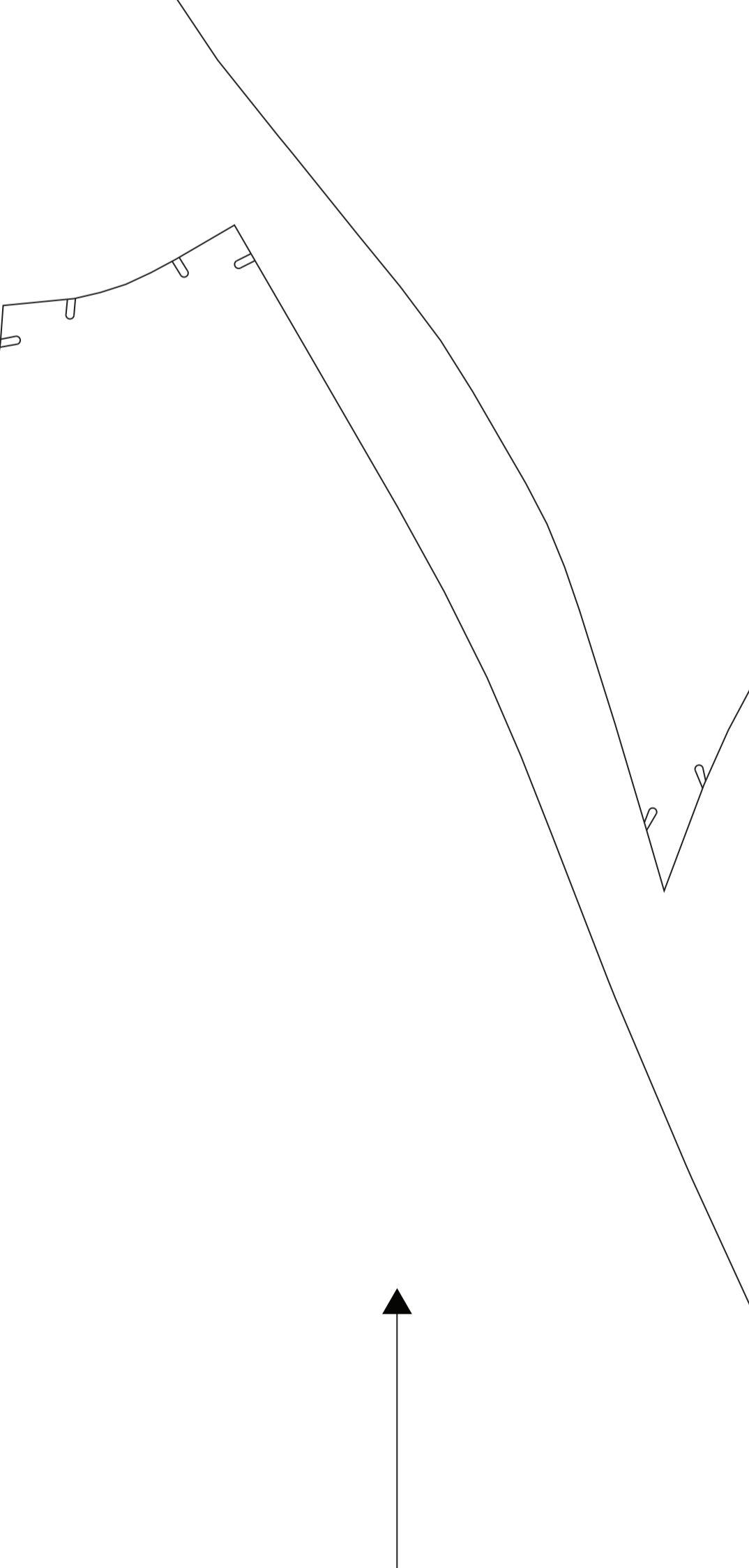
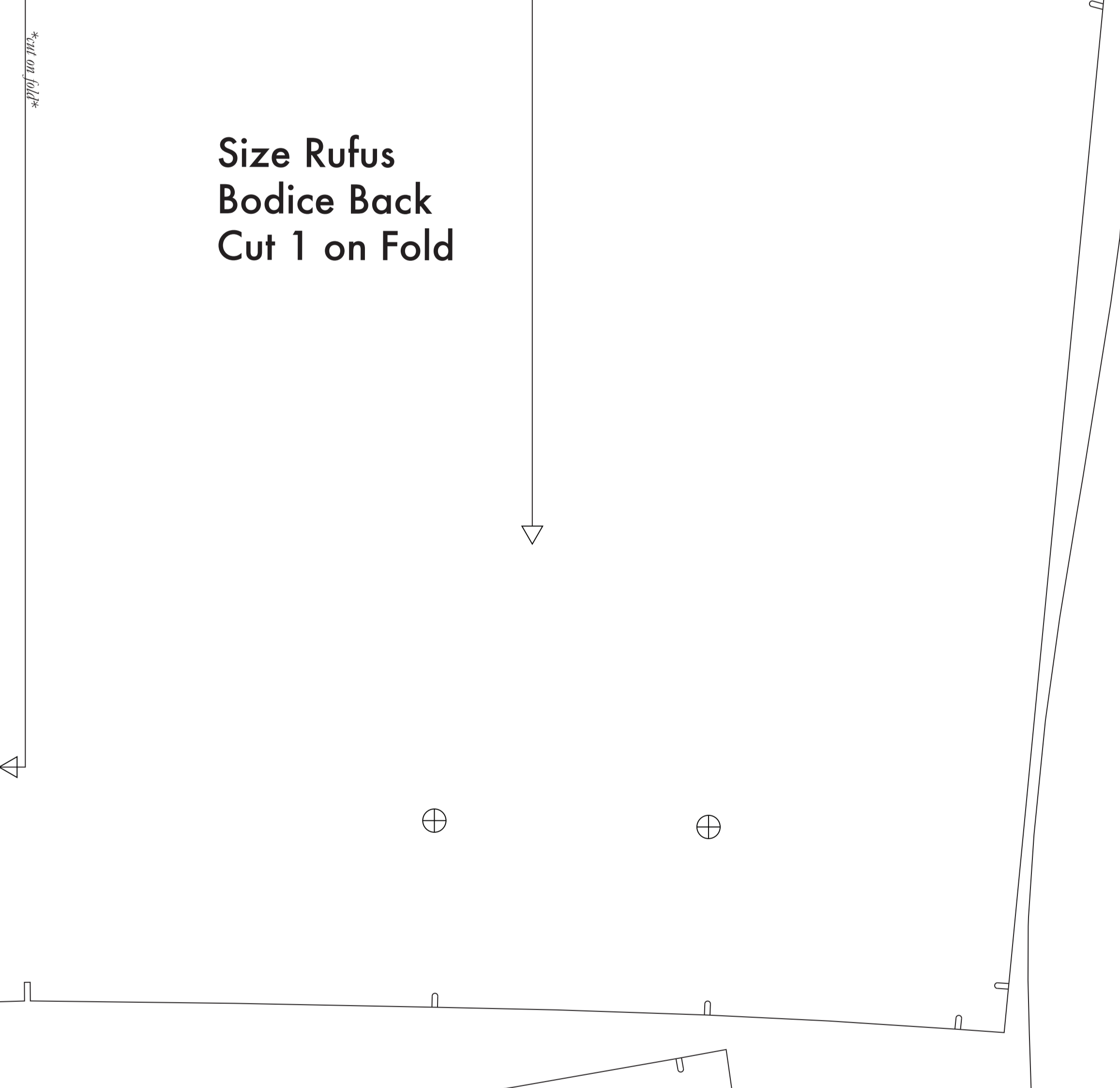
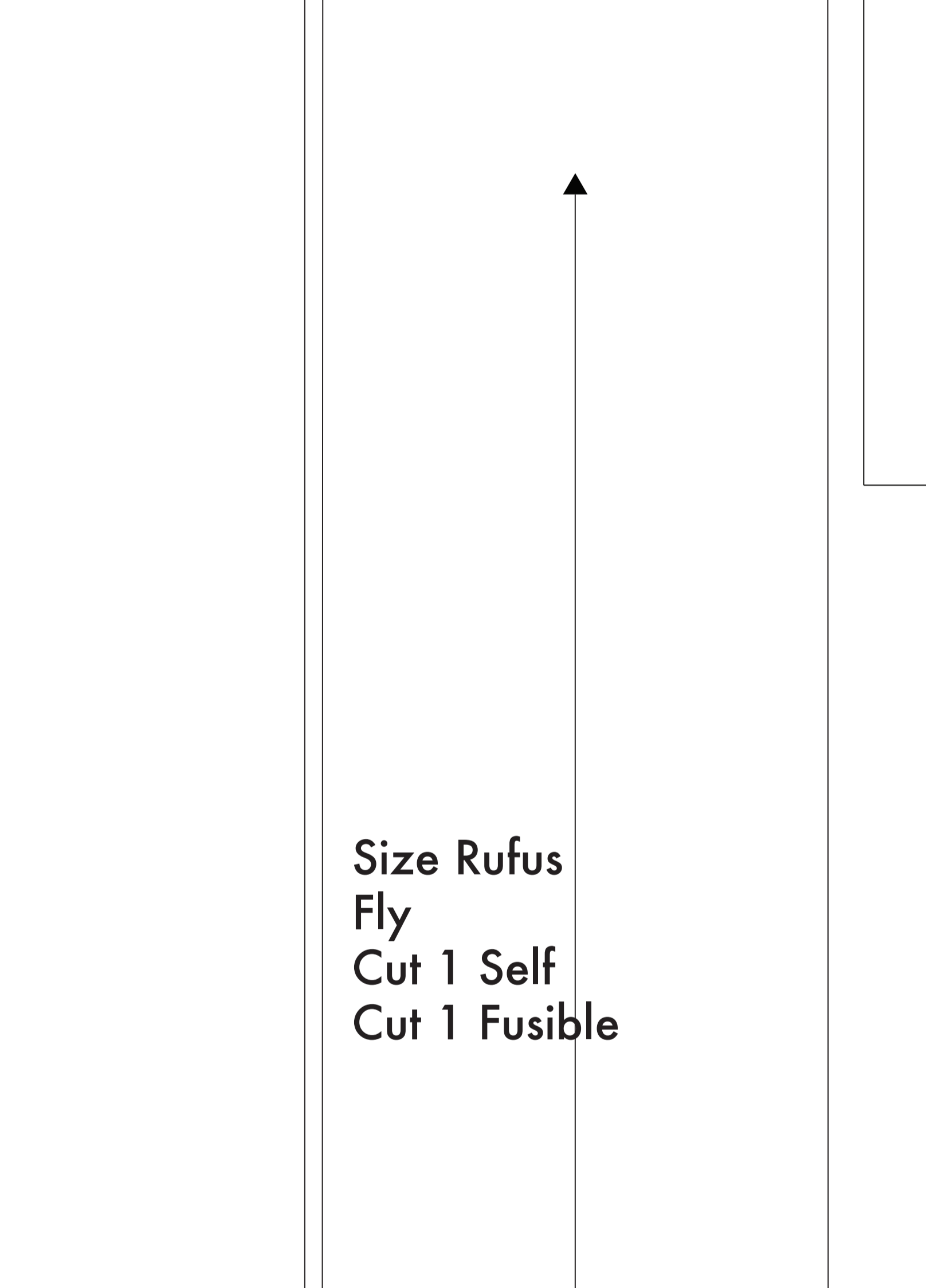
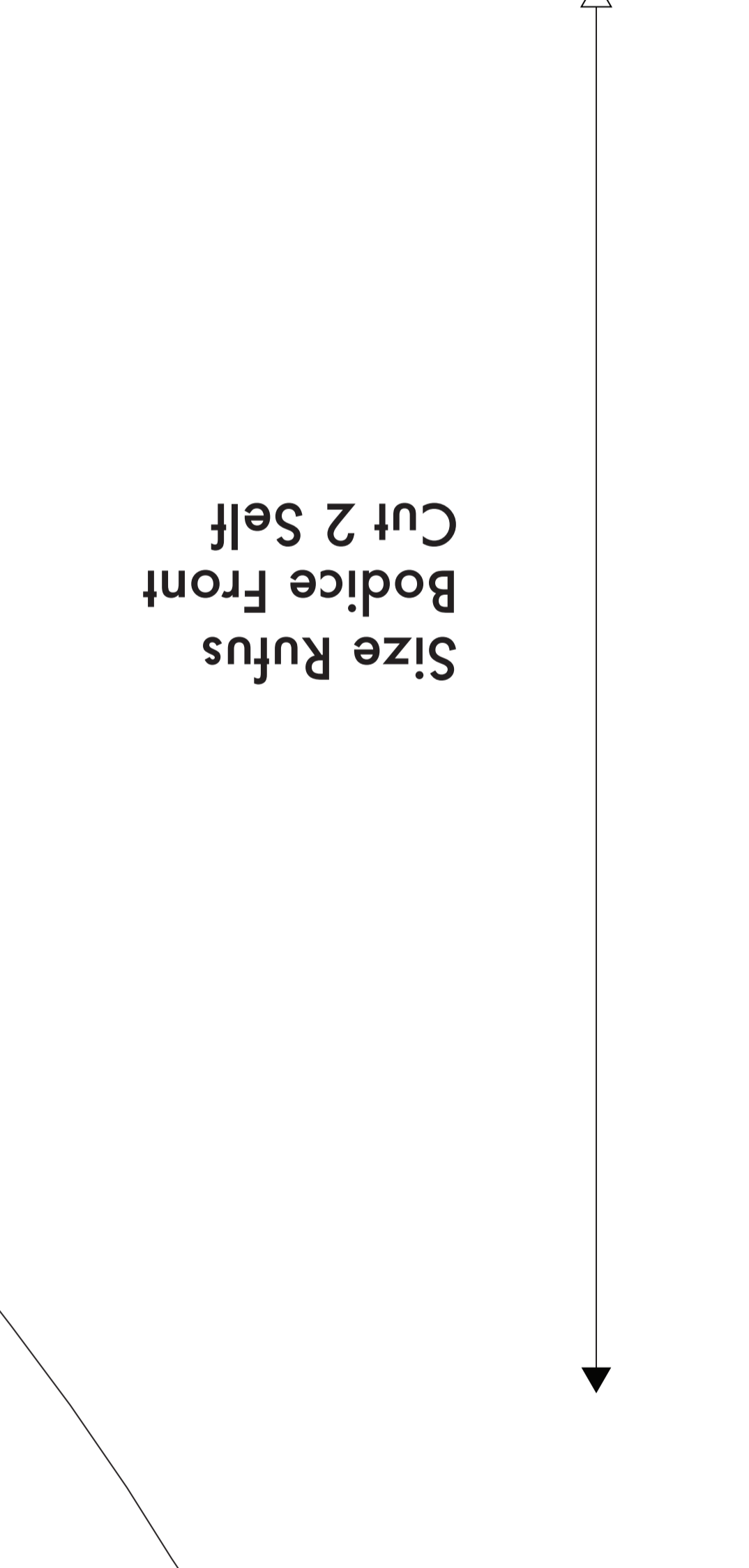
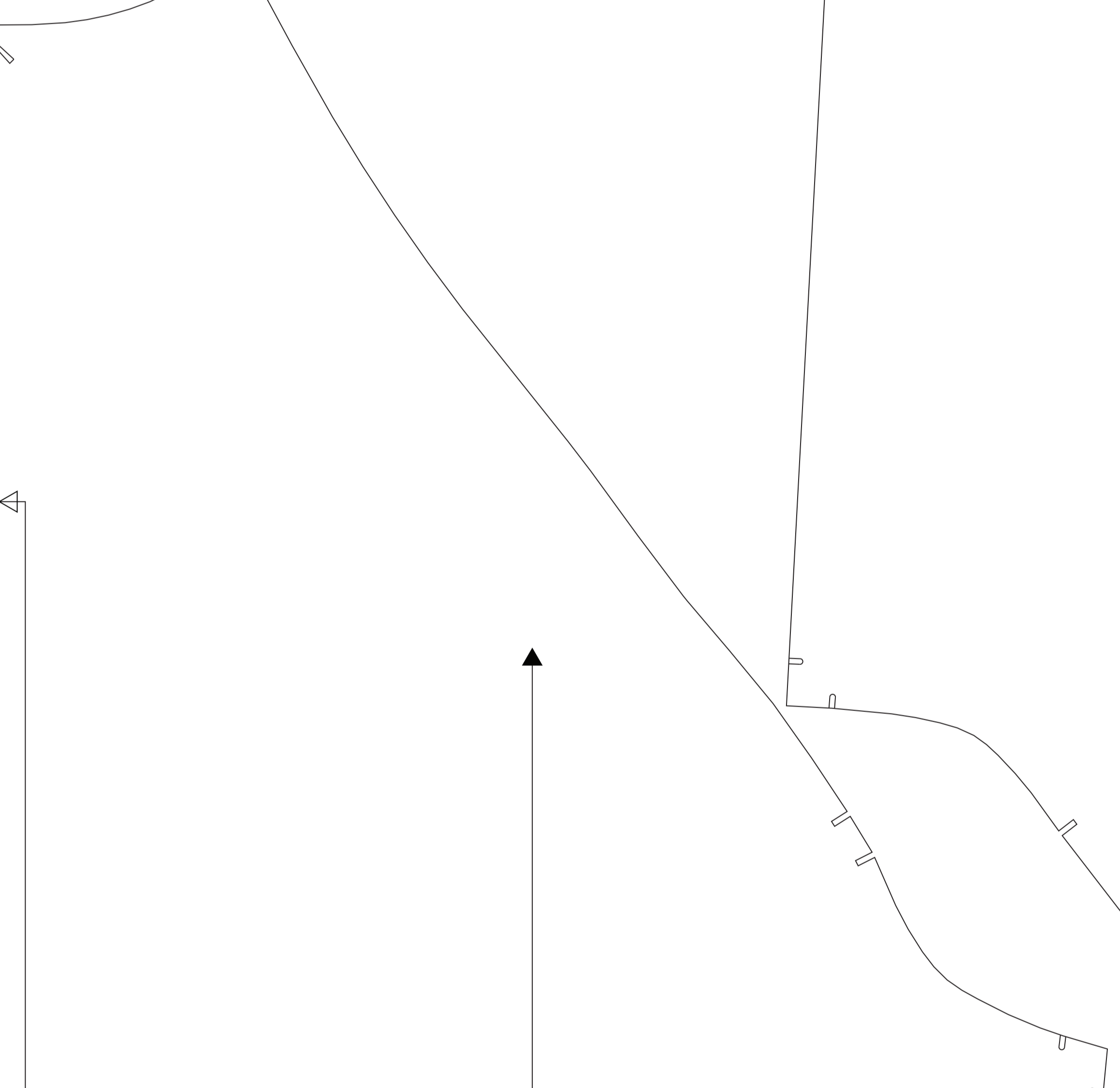
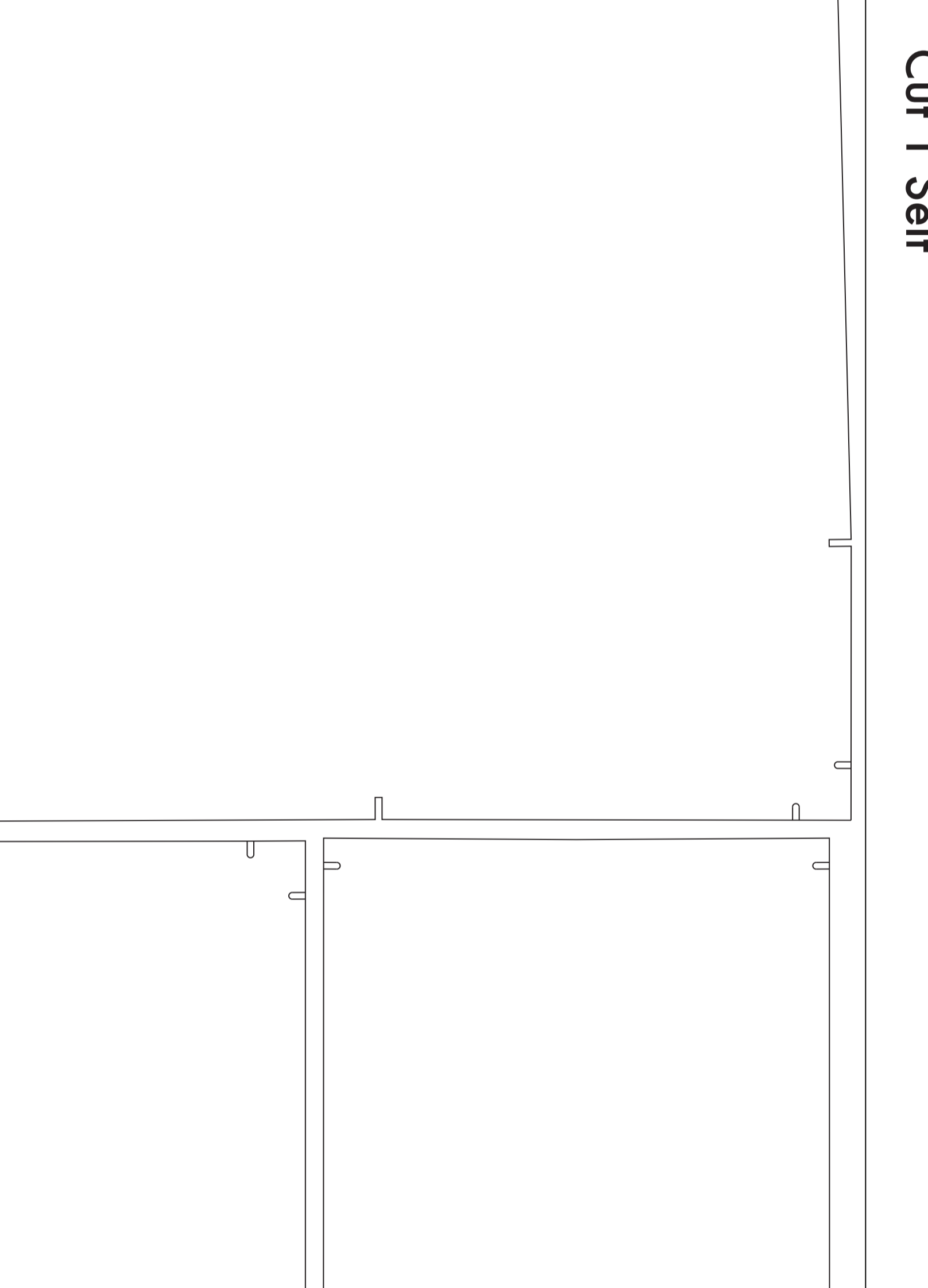
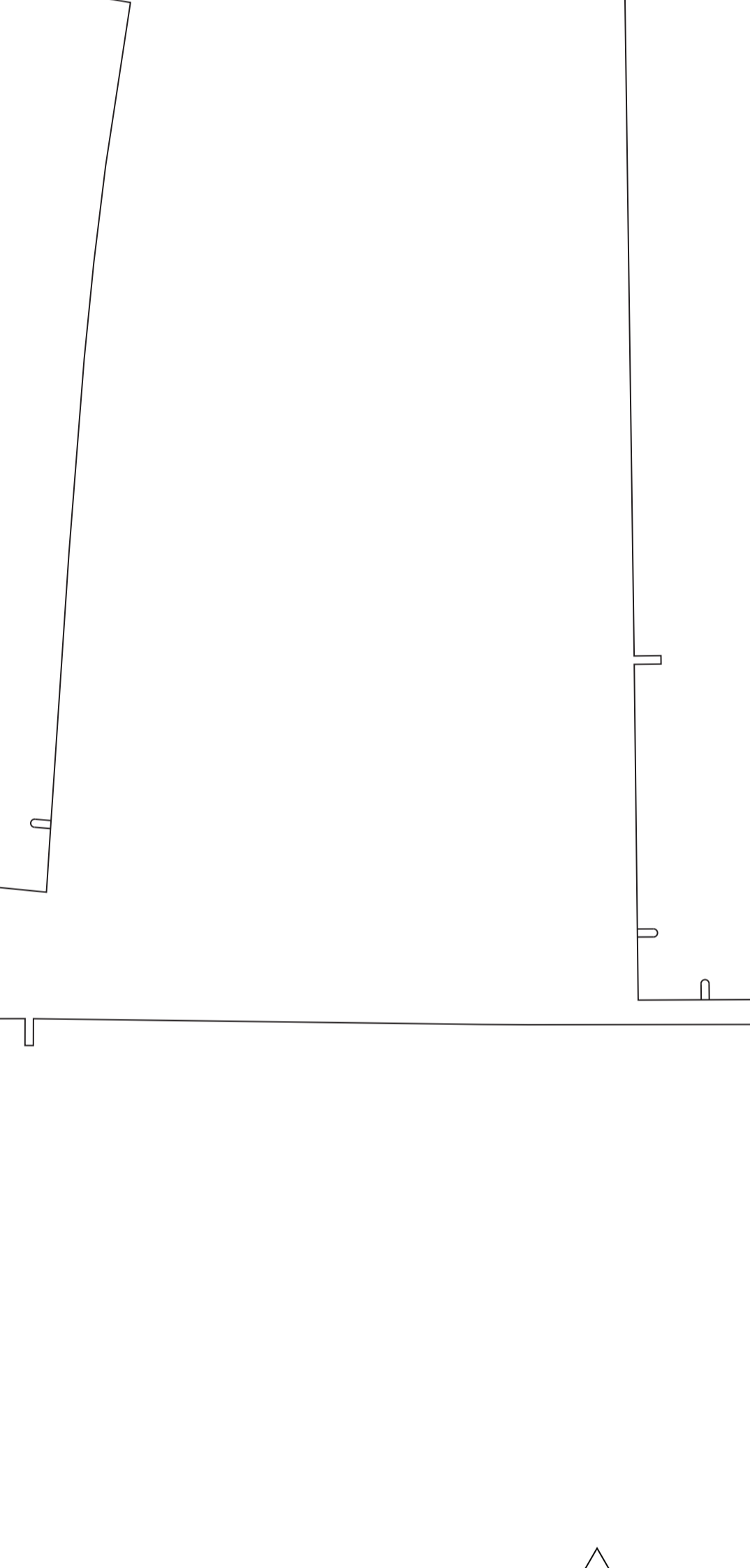
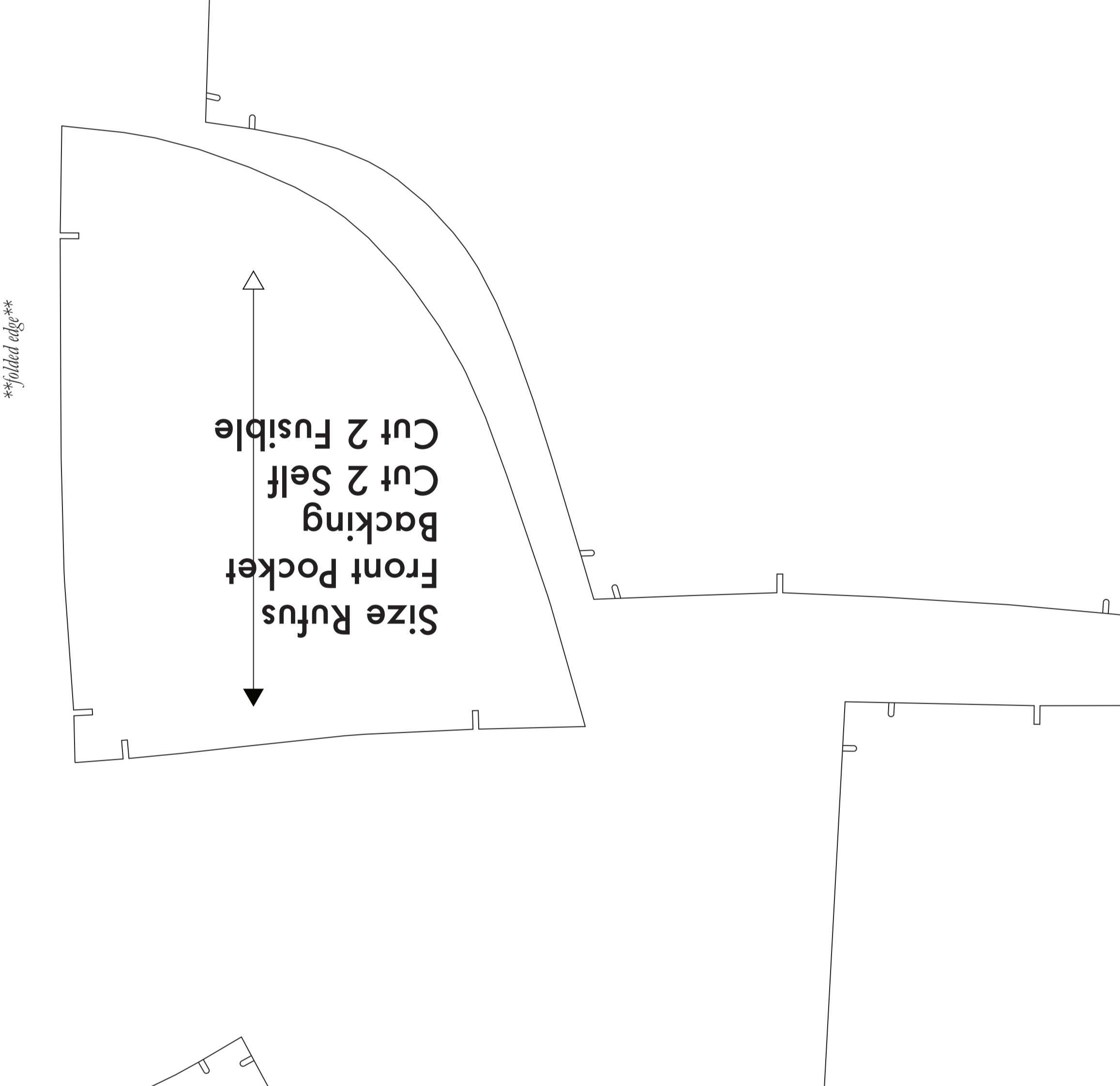
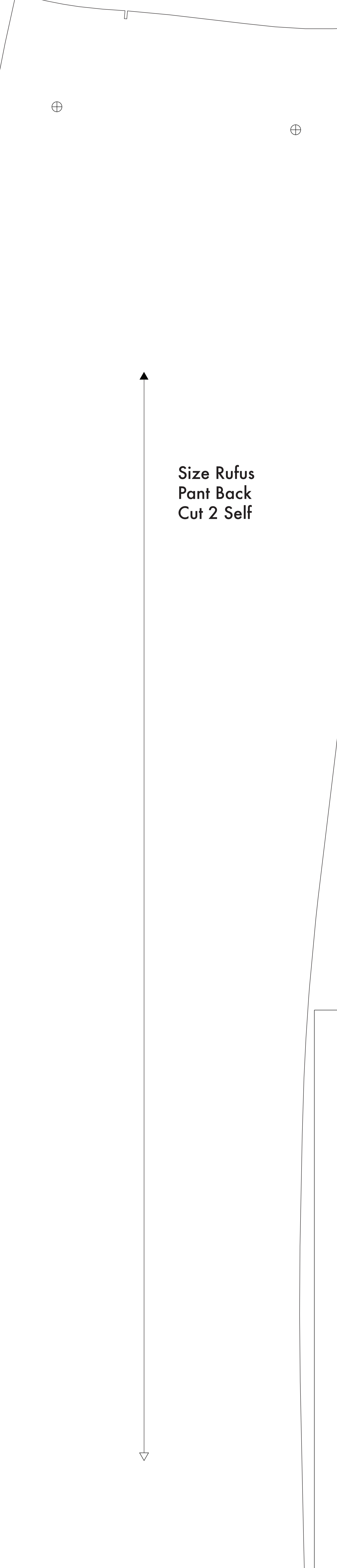
NOTE A: FABRIC LESS THAN 54" WIDE
If your fabric is less than 54" wide you will need to cut self-pattern pieces lengthwise from the paper template and make a seam in your own fabric along your pattern. The pattern pieces are laid out for fabric that does not have a direction. For fabric with a nap, such as velvet or gabardine or fabric with a clear directional grain use **NOTE B**.

NOTE B: FABRIC WITH NAP OR DIRECTIONAL PATTERN
For fabric with a nap or directional pattern, such as velvet or gabardine or fabric with a clear directional grain, you will need to cut self-pattern pieces lengthwise from the paper template and make a seam in your own fabric along your pattern. The pattern pieces are laid out for fabric that does not have a direction. For fabric with a nap, such as velvet or gabardine or fabric with a clear directional grain use **NOTE B**.

NOTE C: USING FUSIBLE INTERFACING
Fusible interfacing is a material that is used to reinforce, strengthen and stabilize some pattern pieces.
When the use of fusible interfacing is required, the pattern pieces will be marked with the direction "Cut 2 Fusible" or "Cut 1 Fusible". These pieces are the Collar, Fly, Fly Facing, Front Pocket Facing, and Front Pocket Backing. To cut the fusible, lay the material down with the glue side facing up, then place your pattern down and cut around the perimeter of each piece and mark.



Before cutting your fabric measure this square to make sure that the pattern is scaled correctly!
*Some printers and software will automatically scale large scale images which will affect the fit.
The inner square should measure 4" x 4"
The outer square should measure 12cm x 12cm



Belt Loops Cut 1 Self