

- SUPPLIES NEEDED**
- 3 1/2 YARDS OF 54" WIDE FABRIC
 - SHARP SCISSORS
 - REMOVABLE MARKING MEDIUM (chalk, wax, tailor's hook, etc.)
 - 1 1/2" WIDE FUSIBLE INTERFACING
 - THREAD
 - SEWING MACHINE (optional)
 - 1/2" STRIP OF THINNER POCKET FABRIC
 - FUSIBLE INTERFACING

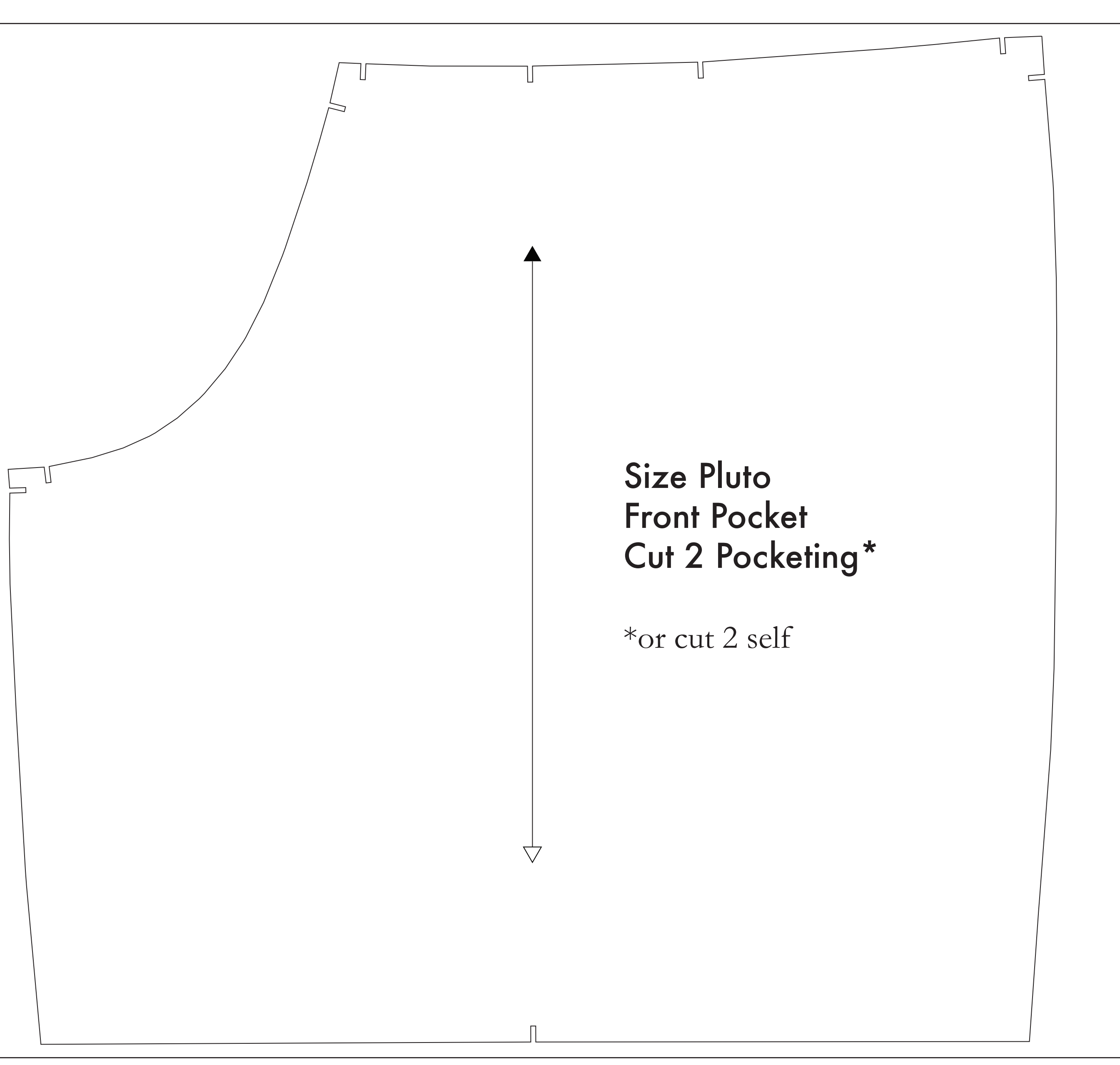
CUTTING INSTRUCTIONS

1. Trace pattern. You can print this document (and on sheets of standard size paper and tape the pieces together, or print on a wide-format printer (36" or wider). Print steps after this source for approximately \$12. If available to you, the HDX version with faster printing.
2. Once your pattern is printed, cut along the measurement markings to remove any excess paper. This template should fit exactly on a 1/2" wide or larger piece of fabric that has been folded in half. If your fabric is less than 54" wide, see **NOTE A**. For maximum fold the pattern is laid out for fabric that does not have a direction. For fabric with a nap, such as velvet or corduroy or fabric with a clear directional grain, see **NOTE B**.
3. Fold your fabric in half along the lengthwise grain matching selvage edge to selvage edge. Sewage is the self-finished edge of fabric. This serves both for marking and for finishing. When it has an edge that matches the fly fringe, though just as frequently, a clearly finished line will be found. Avoid this edge in your cut pieces as the texture frequently differs from the main body of the fabric.
4. Place the paper template on top your fabric, matching the folded edge of the fabric with the side of the paper marked "folded edge".
5. Place pins throughout the template pinning together both layers of fabric as well as the paper.
6. Cut around the perimeter of each piece.
7. Leaving the pins in place, you will need to snip each of the notches, taking care to not snip beyond the end of the 1/4" mark.
8. Mark as the 1/4" depth markings that are placed throughout the pattern.
9. Some notches indicate seam allowances, which when cut will give you an 1/4" pattern piece which is not.
10. Mark all corner and hole holes using a pin, being together both layers of fabric and the pattern, mark the center of each hole both with chalk, wax or other removable, non-permanent mark. A tailor's tack may also be used.
11. Your center and hole or markings are indicated by the following notes.
12. This will be found on the Front Back, Back Back, and 1/2" pattern pieces.
13. **OPTIONAL:** Use fusible interfacing pieces (see **NOTE C** for more info). Pattern pieces that use fusible will be marked with the direction "Cut 2 Fusible" or "Cut 1 Fusible". These pieces are the Collar, Fly, Fly Facing, Front Pocket Facing, and Front Pocket Backing. To cut the fusible, lay the material down with the grain side facing up. Then place your pattern down and cut around the perimeter of this piece and notch.
14. Use the Front Pocket Fly cut of a lighter packing material. If you are not using a packing material, then the Front Pocket Fly may be cut directly from other pattern pieces. Including a waist or side slash is also a valuable material - You will find an example of packing on any part of the pattern.

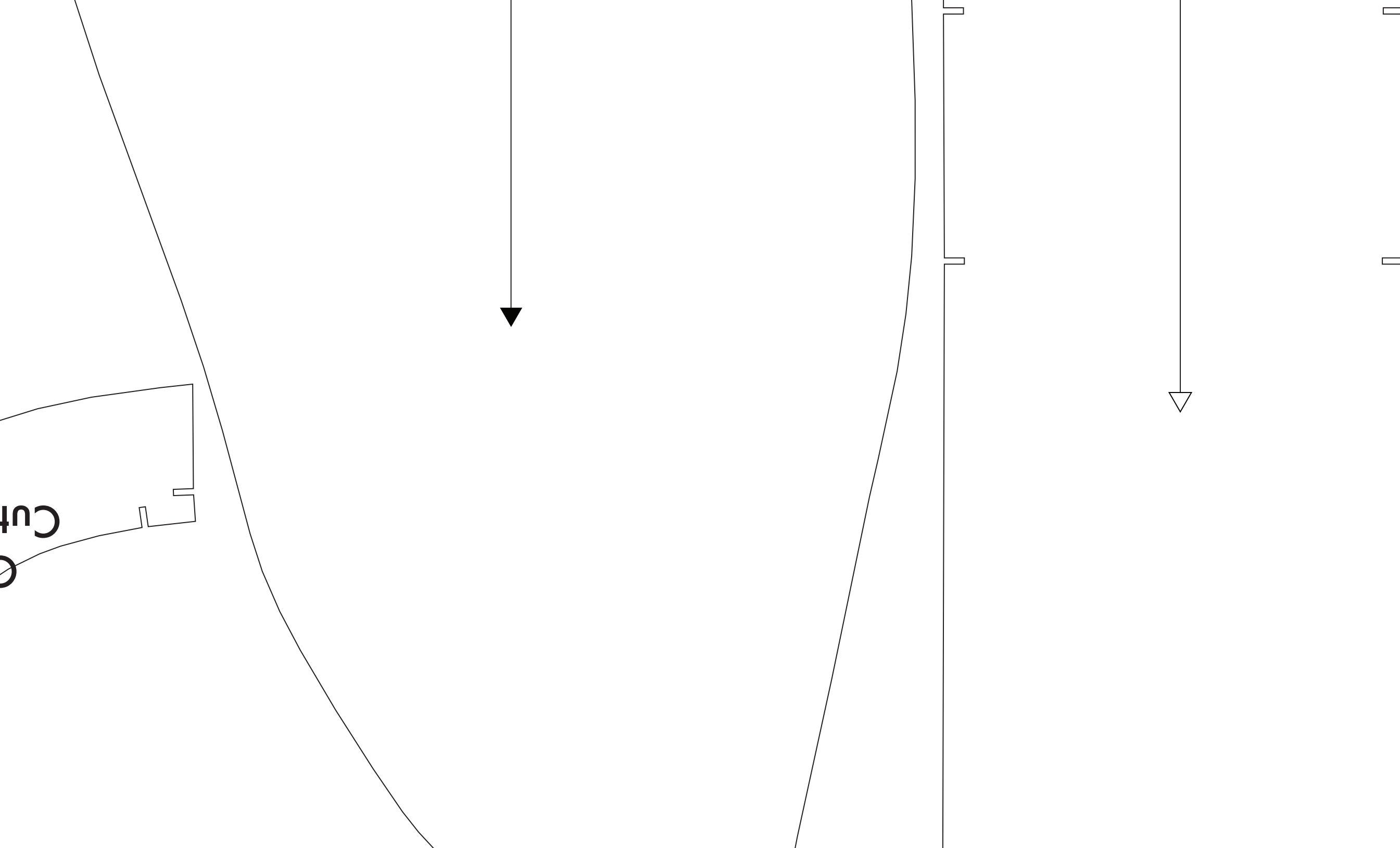
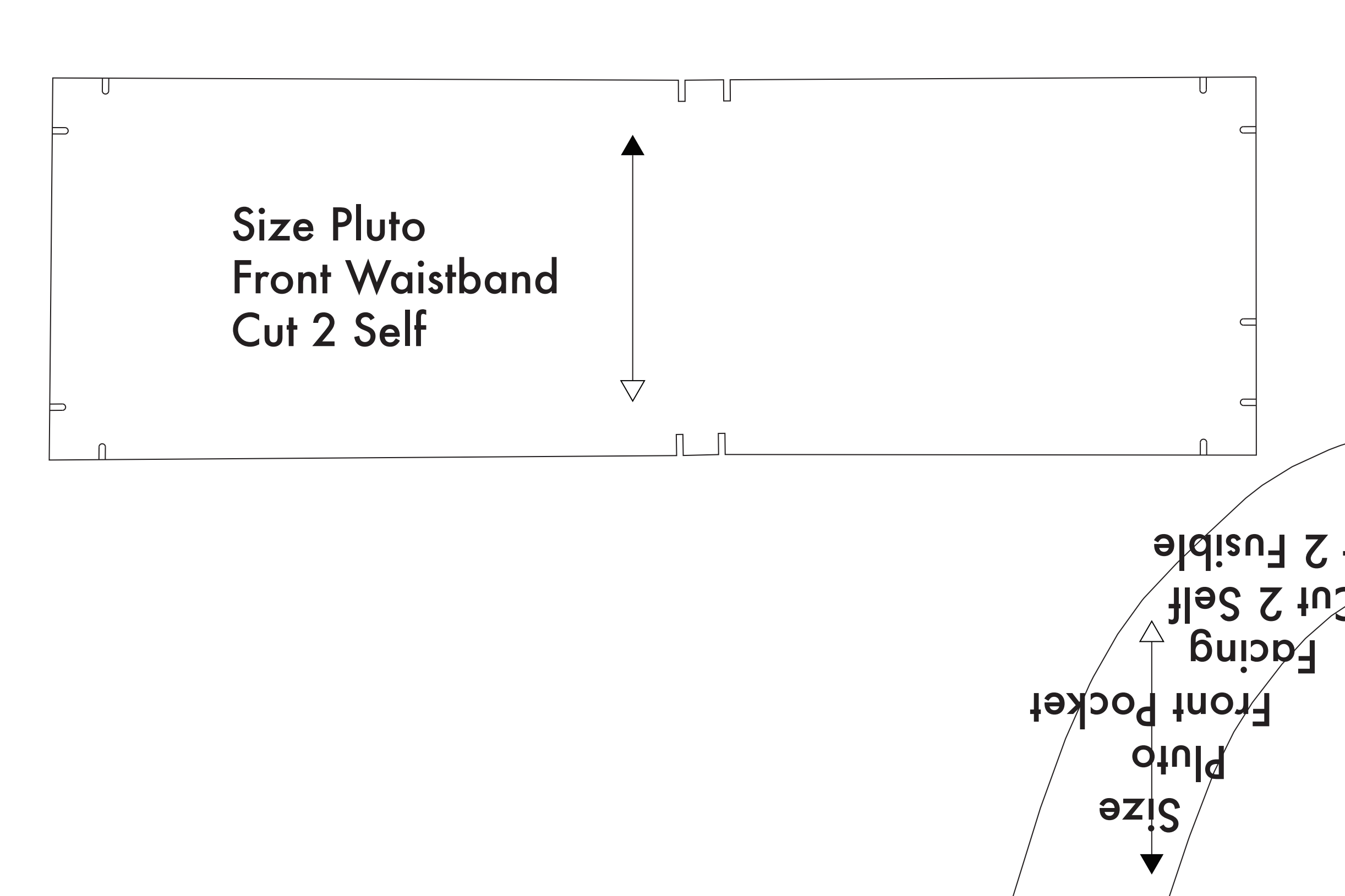
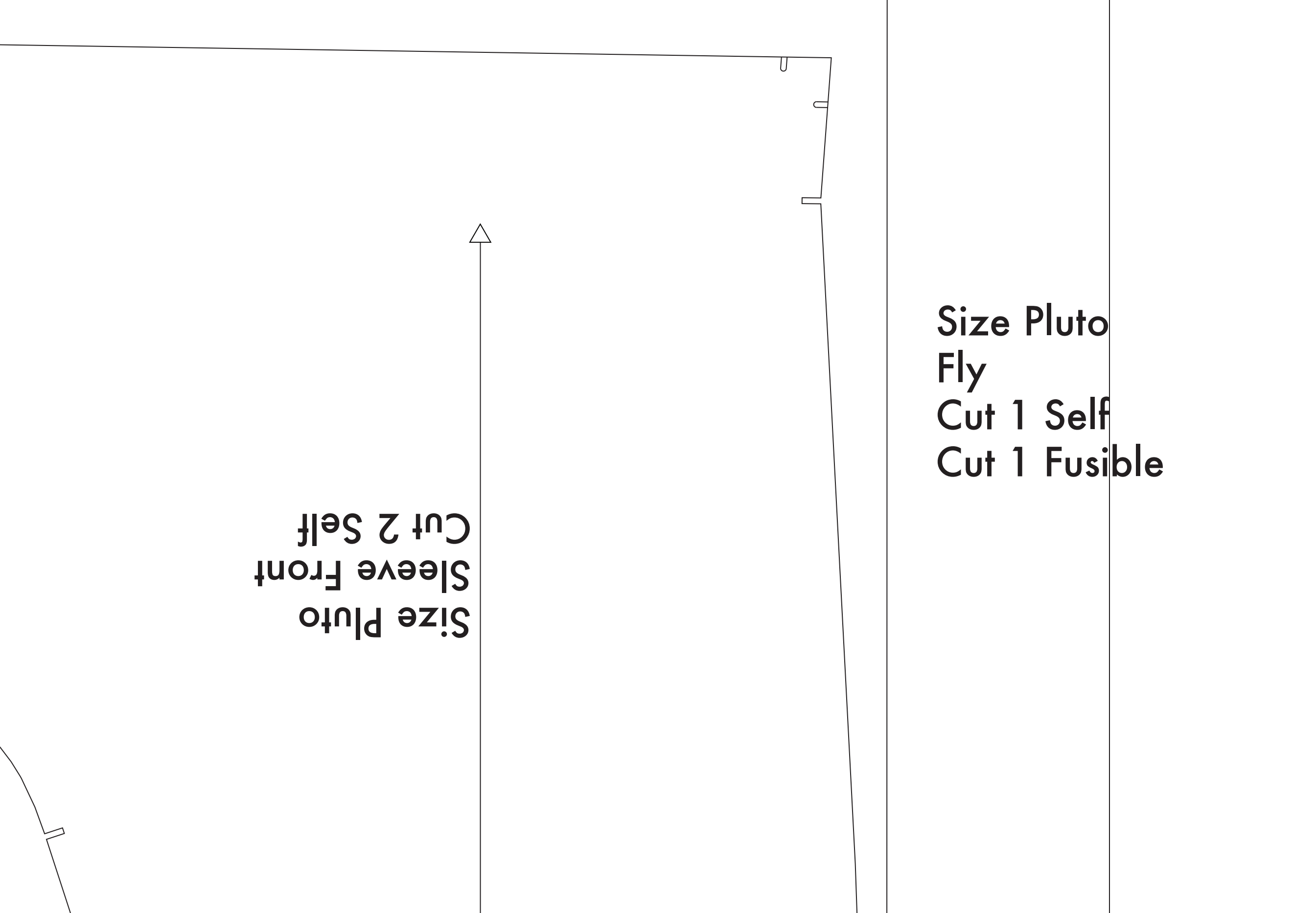
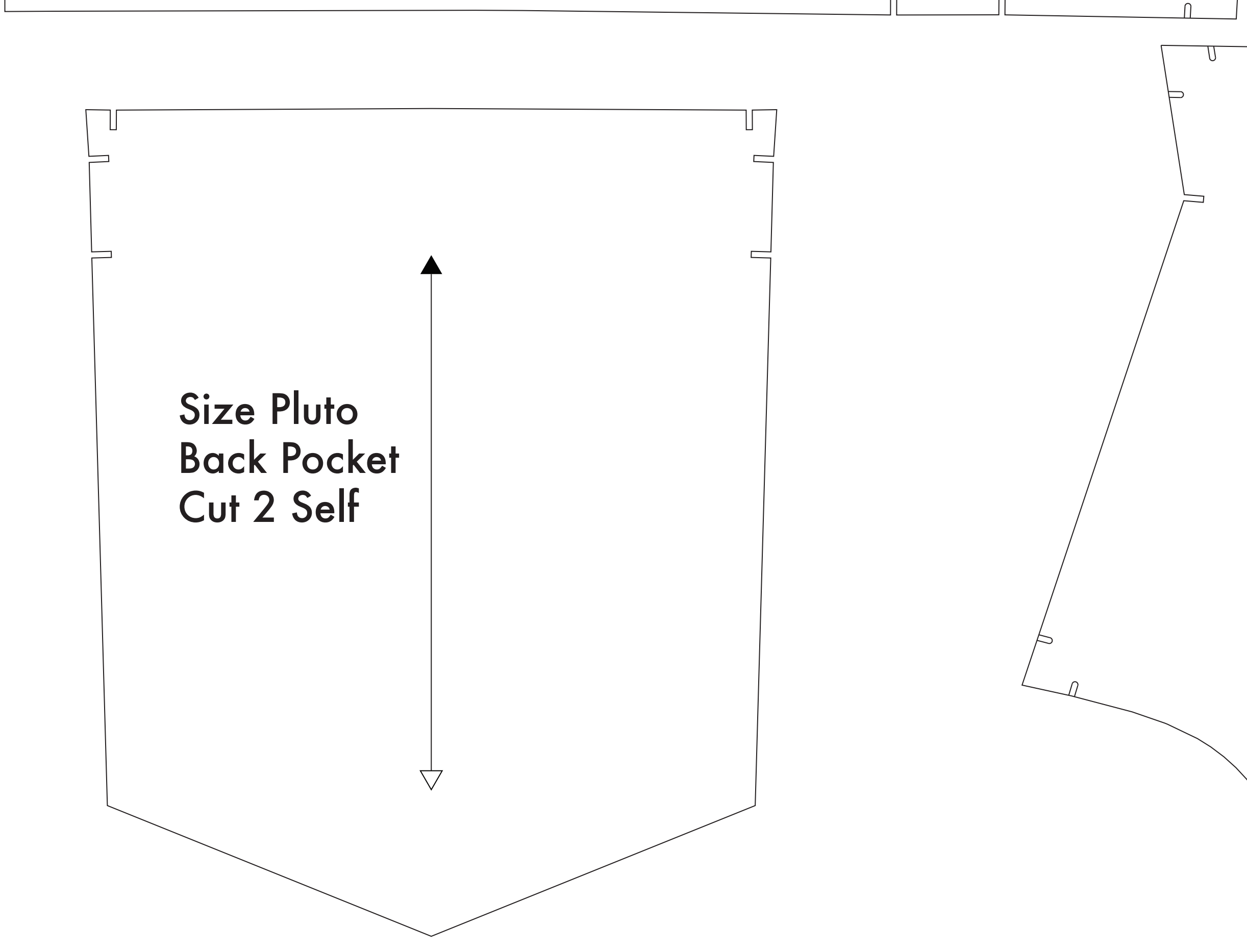
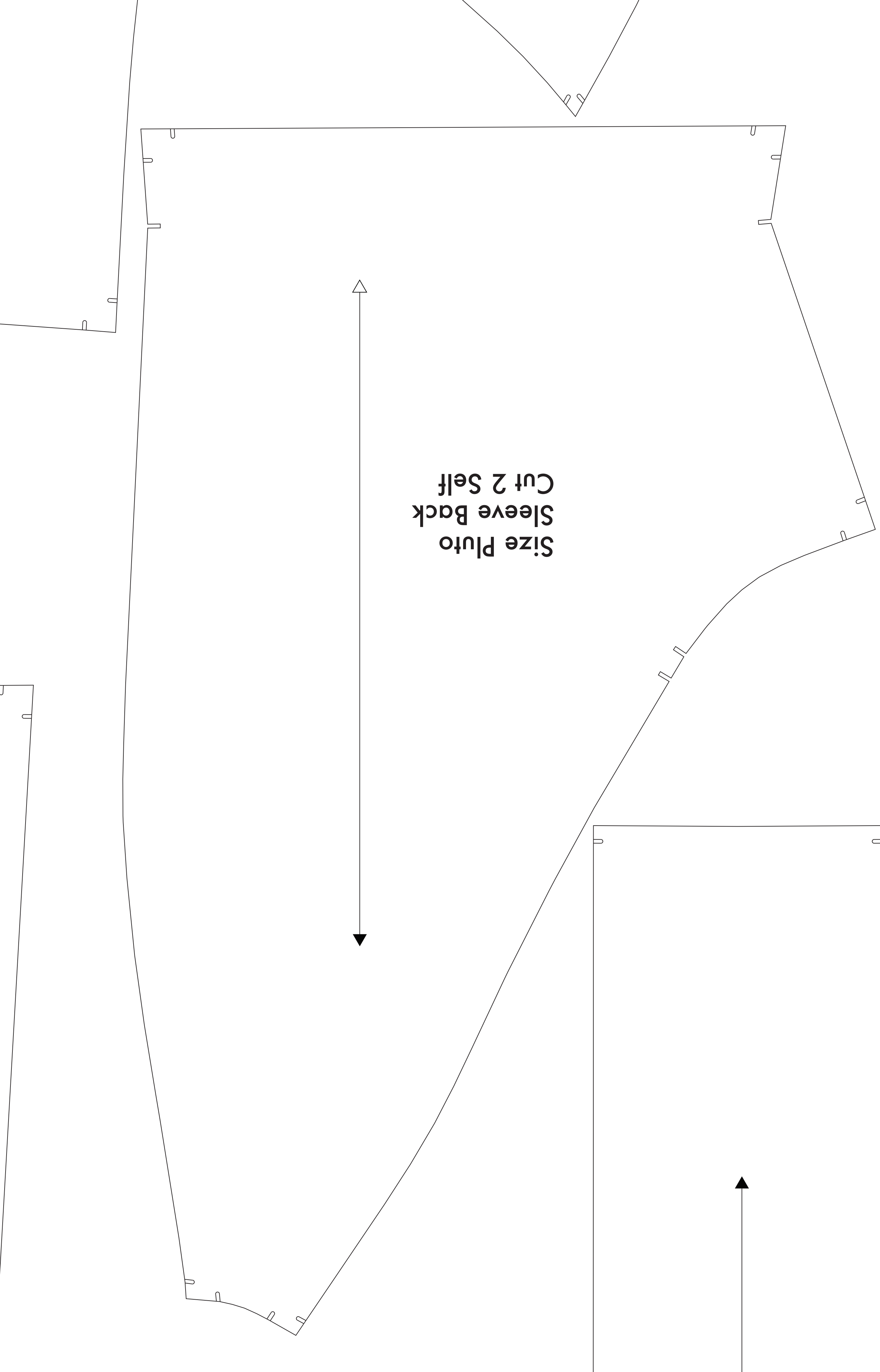
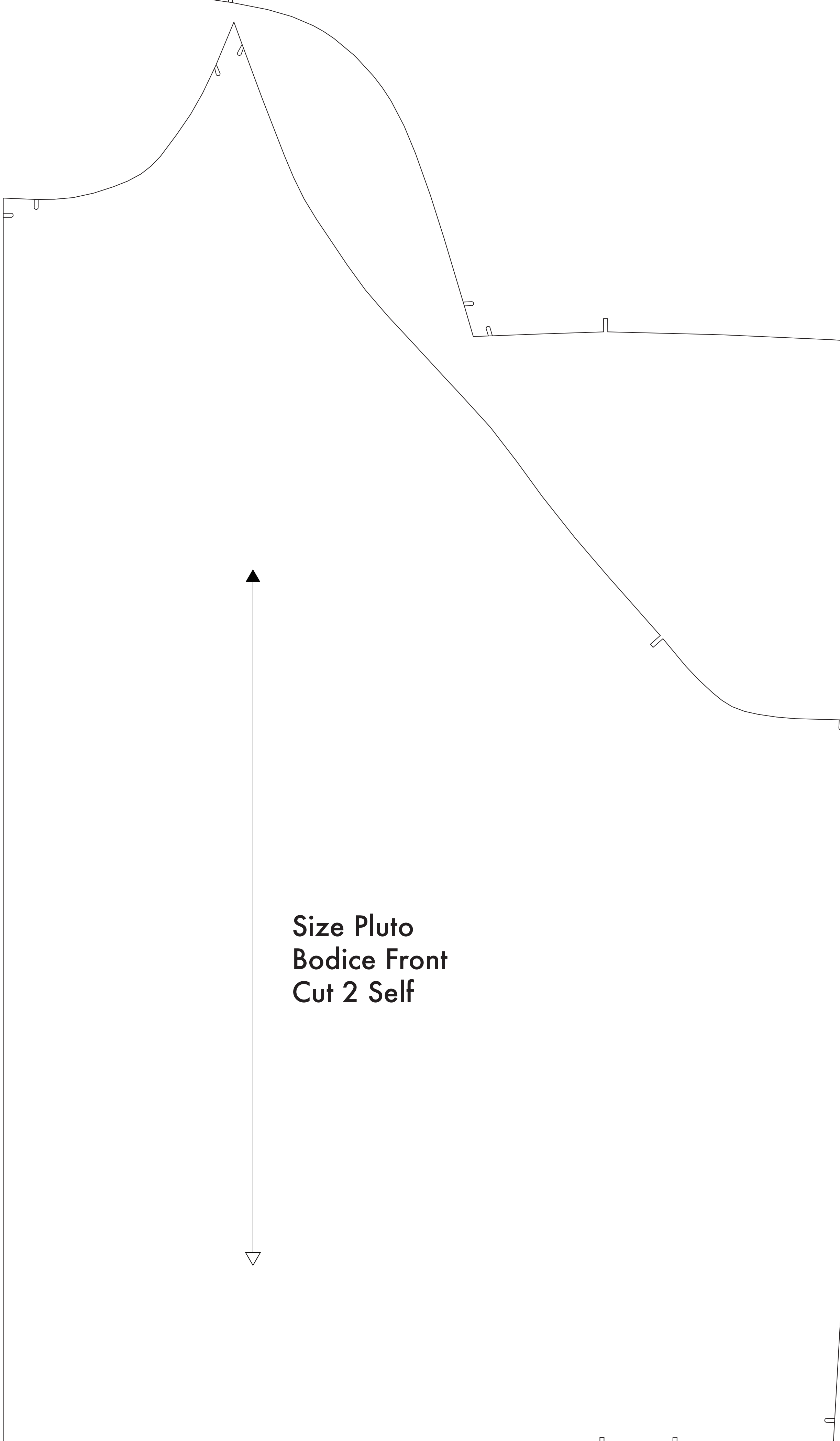
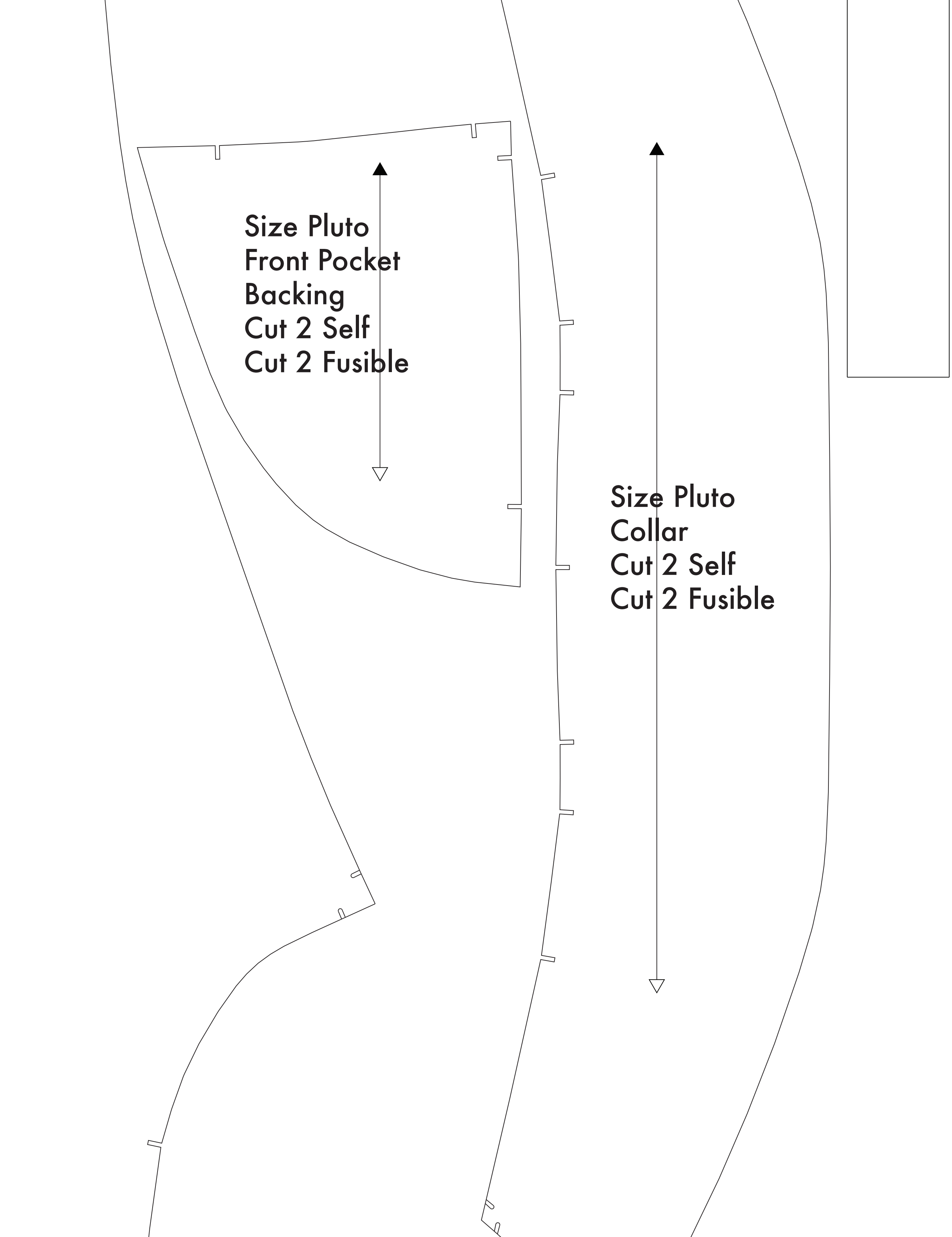
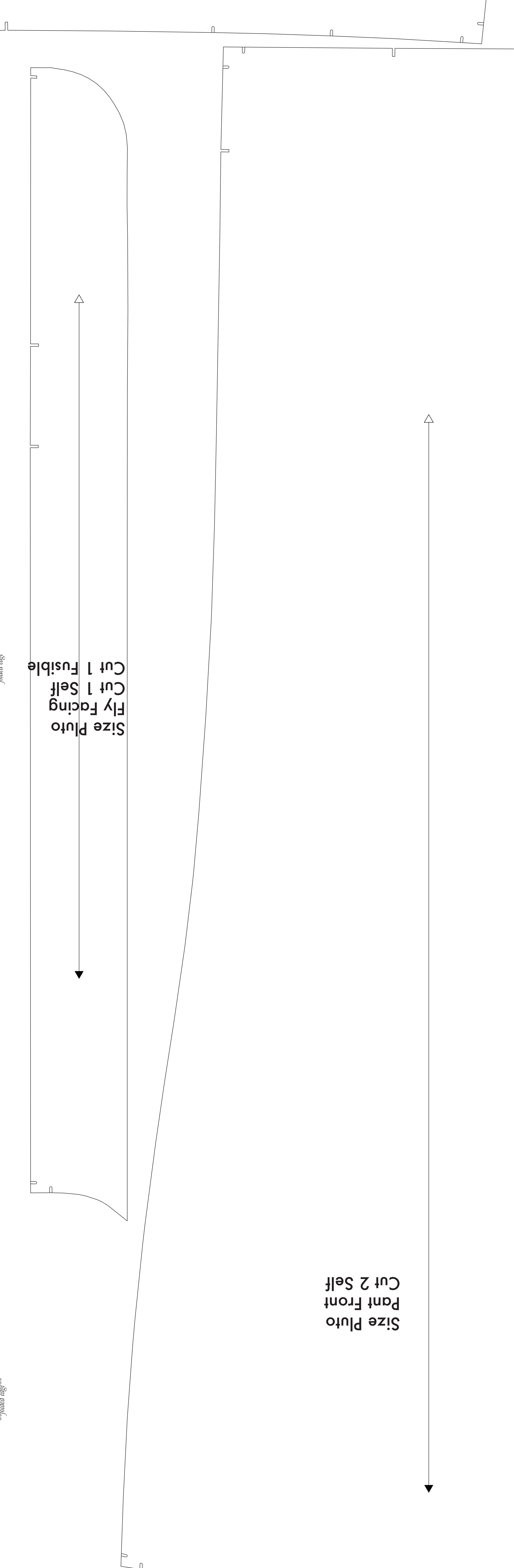
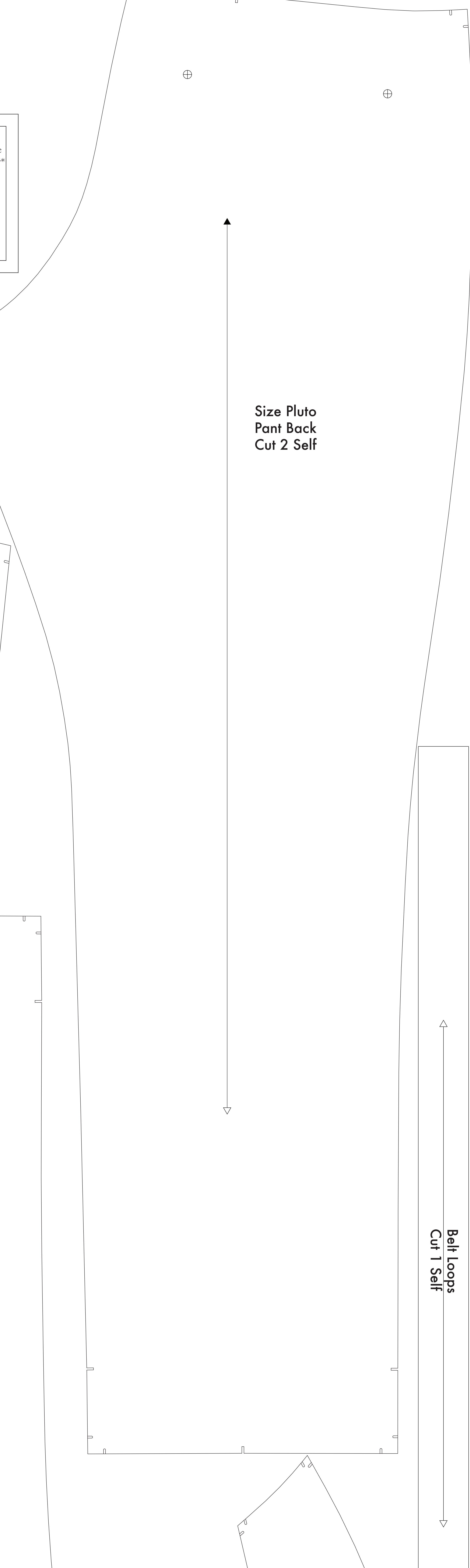
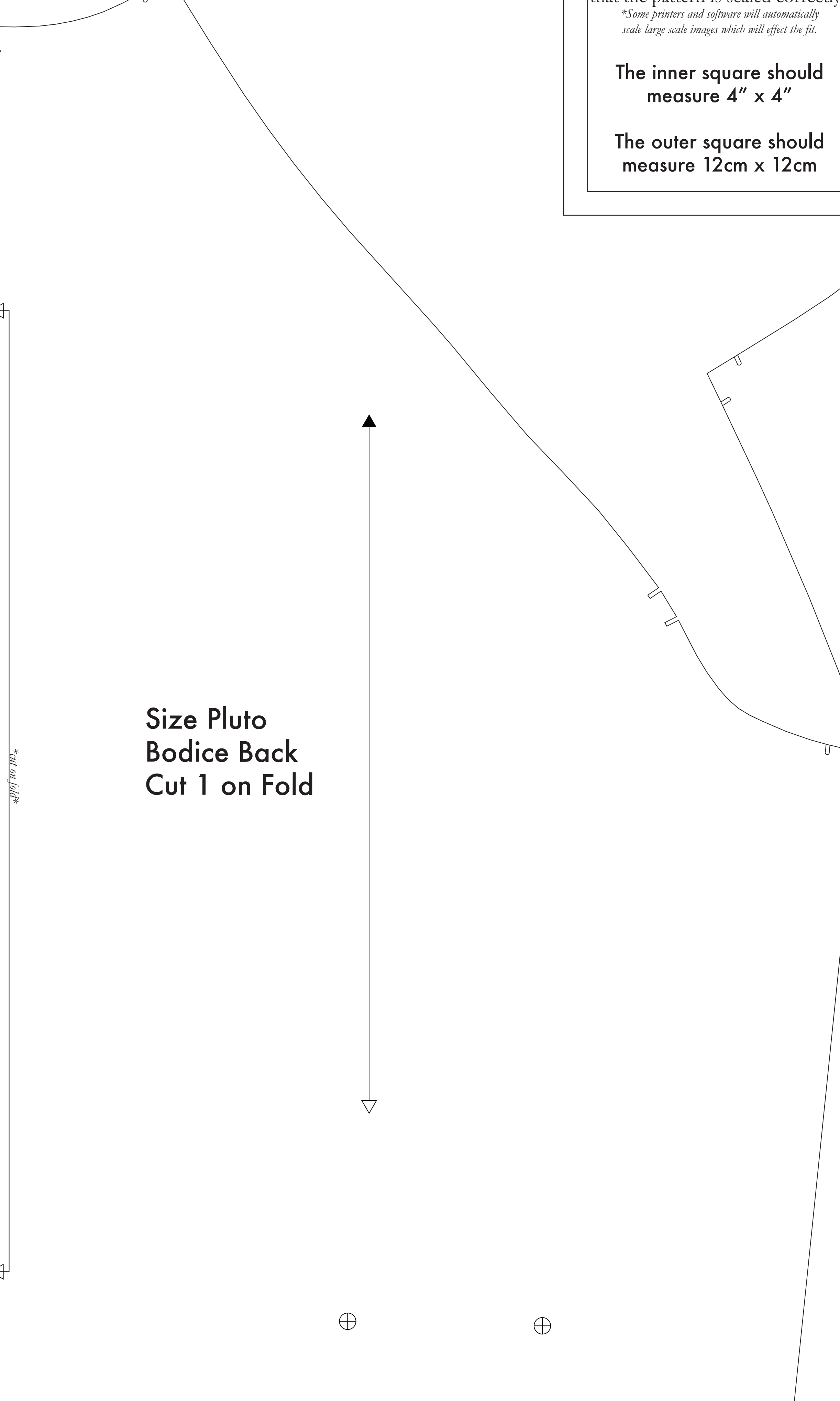
NOTE A: FABRIC LESS THAN 54" WIDE
 If your fabric is less than 54" wide, it will result in an extra piece of fabric that is not required for the jumpsuit. You may use this extra fabric to make a pocket or a collar, or you may use it to make a waistband or a belt. The pattern is designed to be cut on fabric that is 54" wide or larger. If you have a smaller piece of fabric, you may need to adjust the pattern to fit. For more information, see the instructions for the jumpsuit.

NOTE B: FABRIC WITH NAP OR DIRECTIONAL PATTERN
 For fabric with a nap or a directional pattern, such as velvet or corduroy, you will need to cut the pattern pieces in a specific direction. The pattern pieces are designed to be cut on fabric that has a clear directional grain. For fabric with a nap, you will need to adjust the pattern to fit. For more information, see the instructions for the jumpsuit.

NOTE C: USING FUSIBLE INTERFACING
 Fusible interfacing is used to reinforce the collar, neck, and pocket pieces. The pattern pieces are designed to be cut on fabric that has a clear directional grain. For fabric with a nap, you will need to adjust the pattern to fit. For more information, see the instructions for the jumpsuit.



Before cutting your fabric measure this square to make sure that the pattern is scaled correctly*
 *Square pattern and pattern will automatically scale larger with images which will affect the fit.
 The inner square should measure 4" x 4"
 The outer square should measure 12cm x 12cm



Belt Loops Cut 1 Self

Size Pluto Fly Facing Cut 1 Self

Size Pluto Fly Cut 1 Self Cut 1 Fusible