

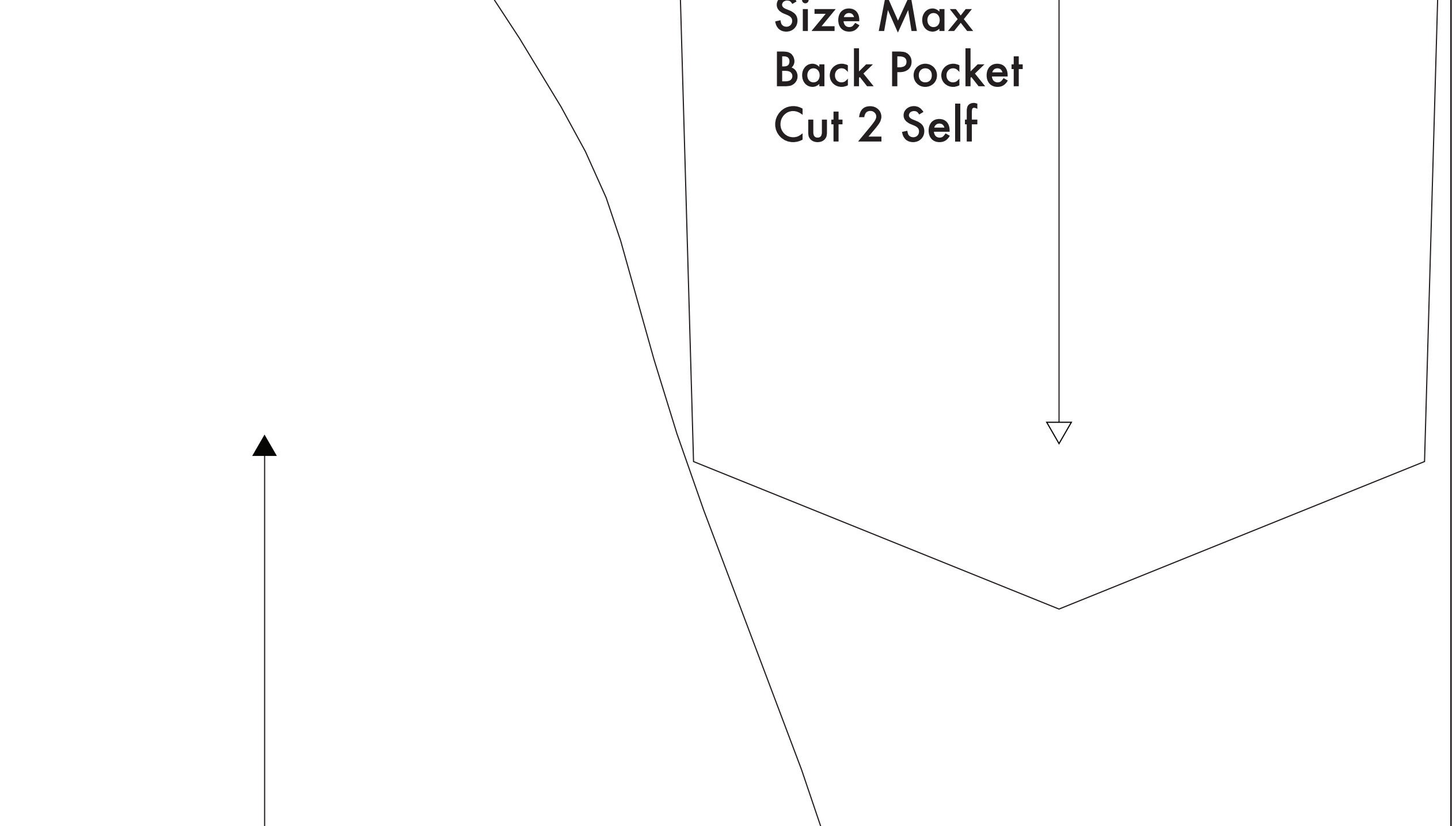
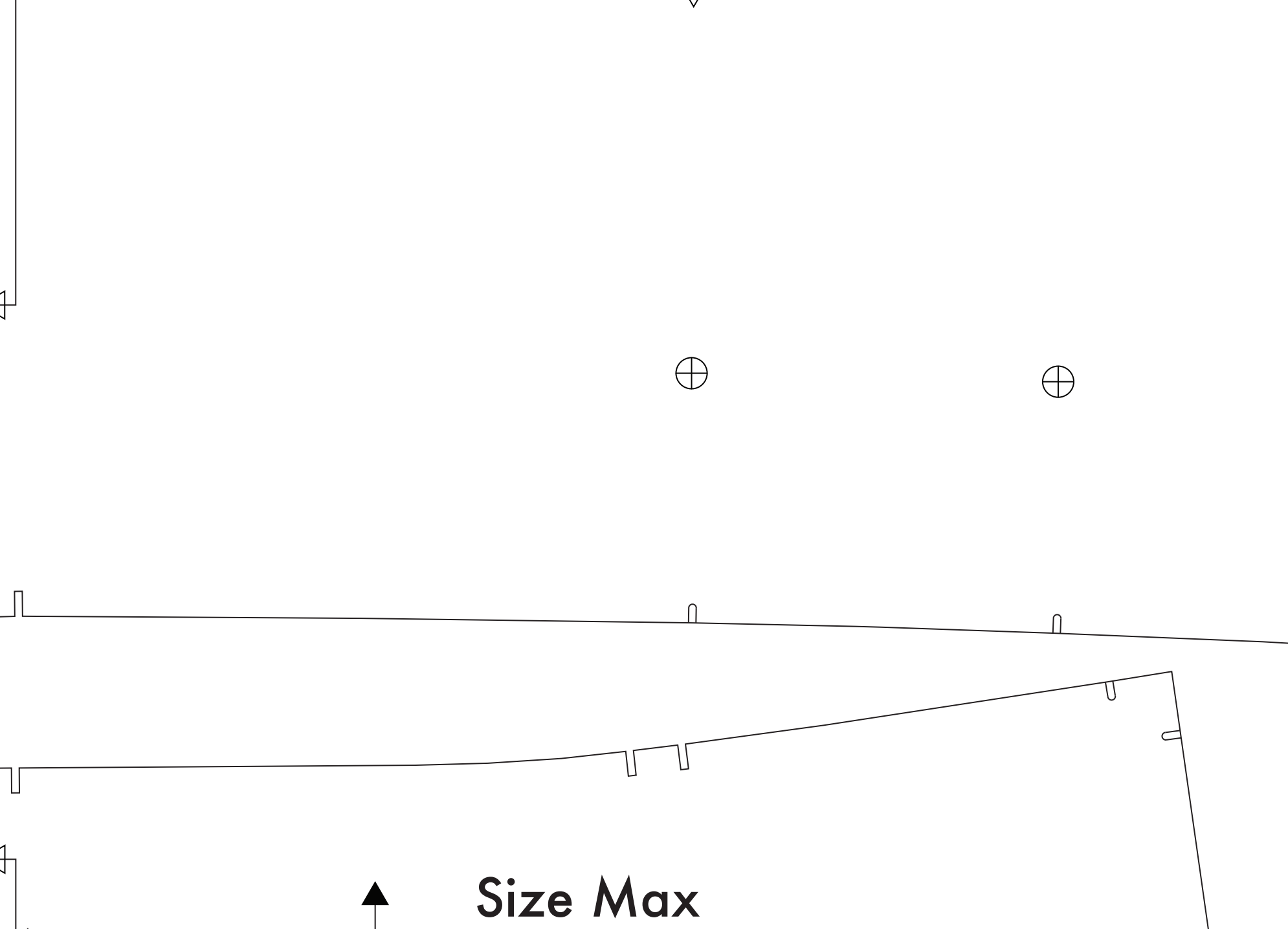
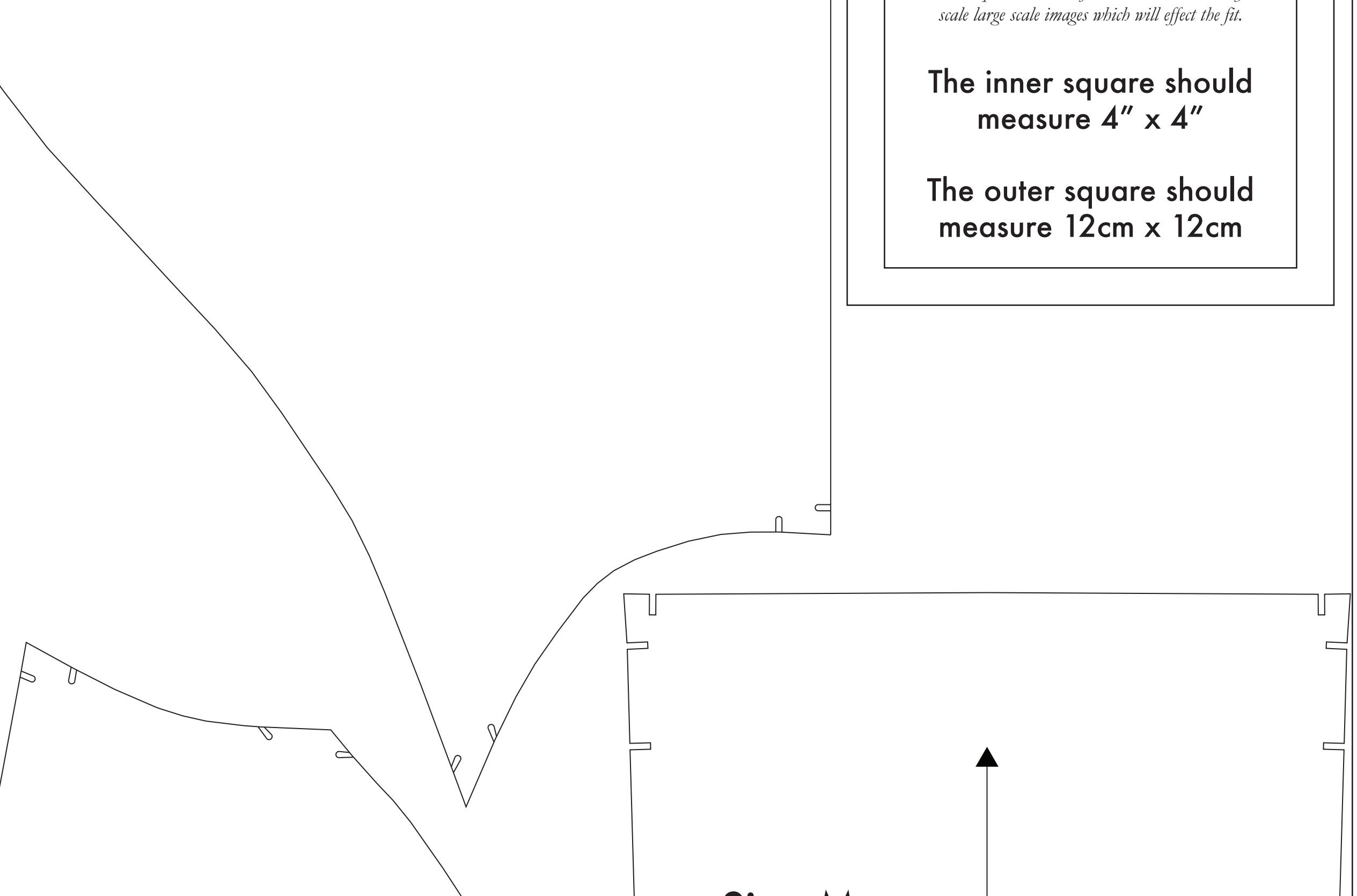
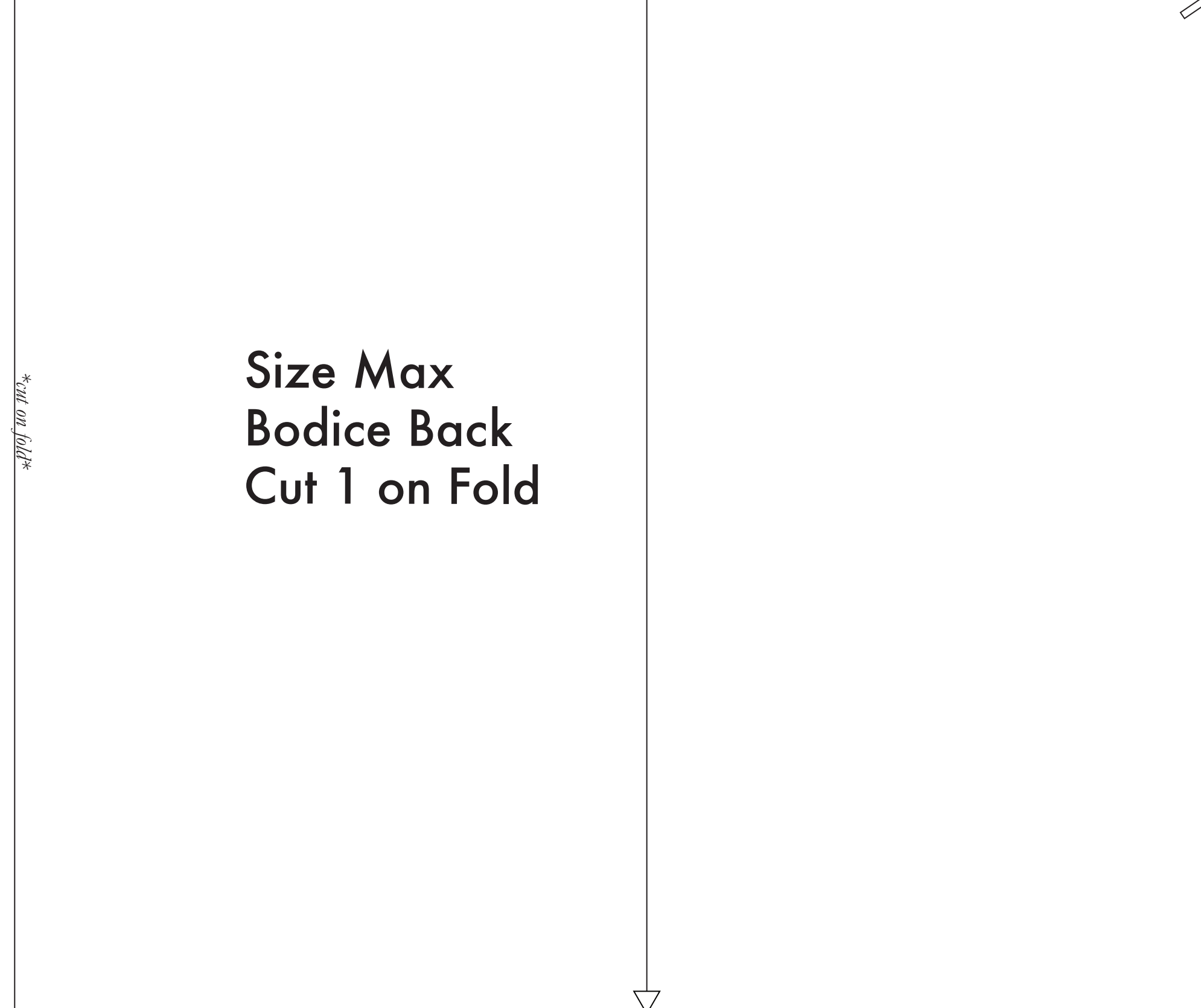
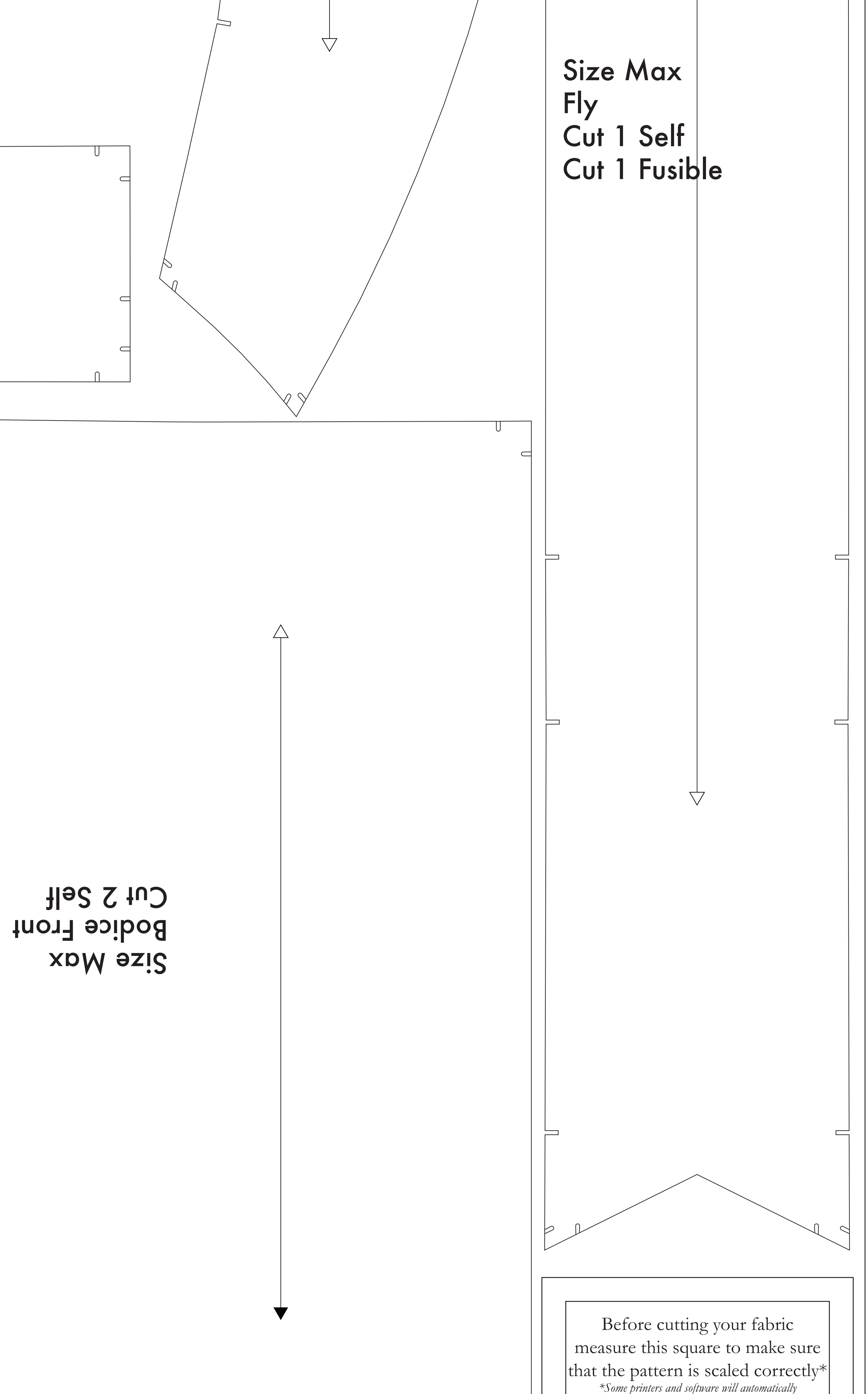
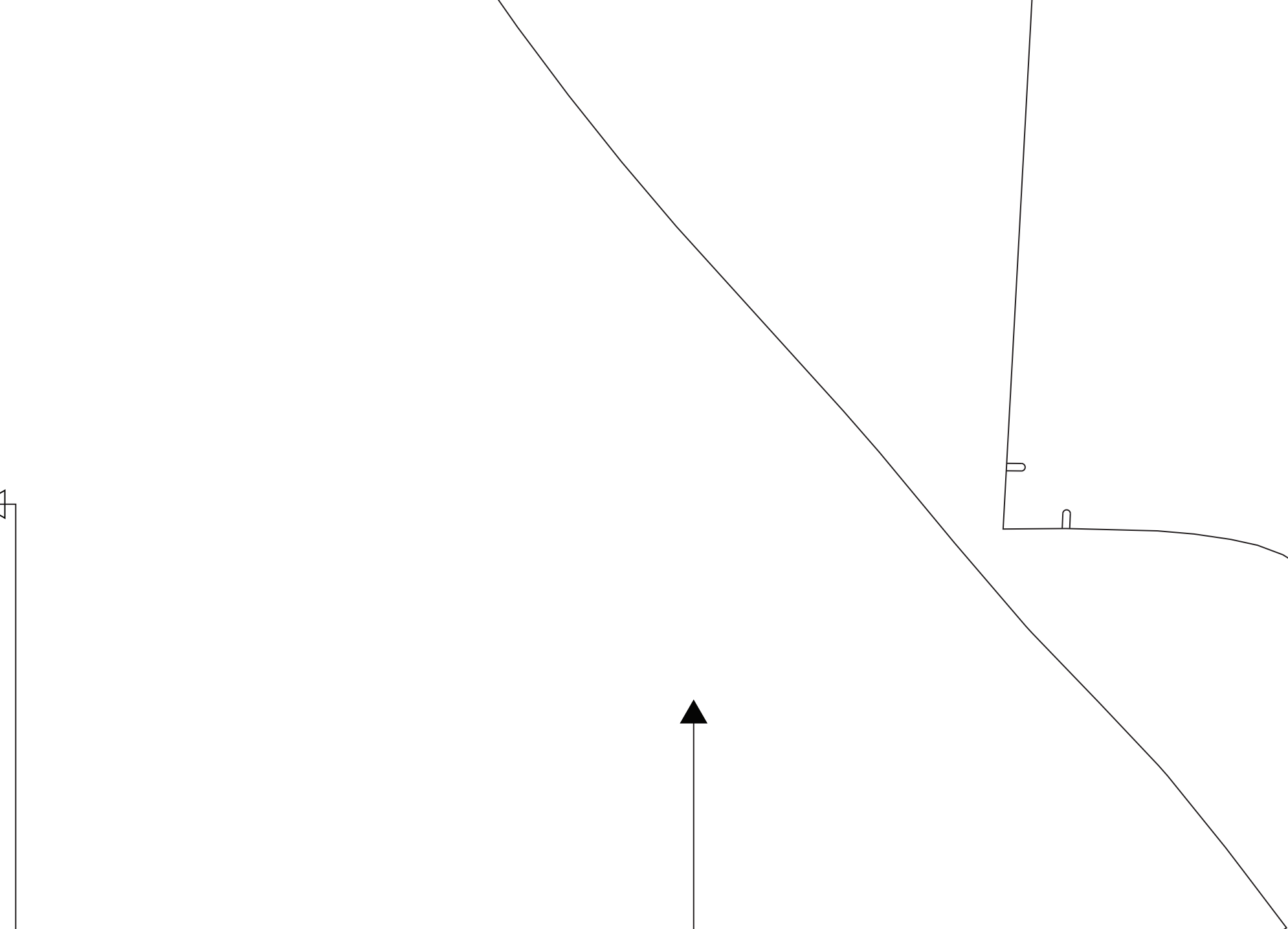
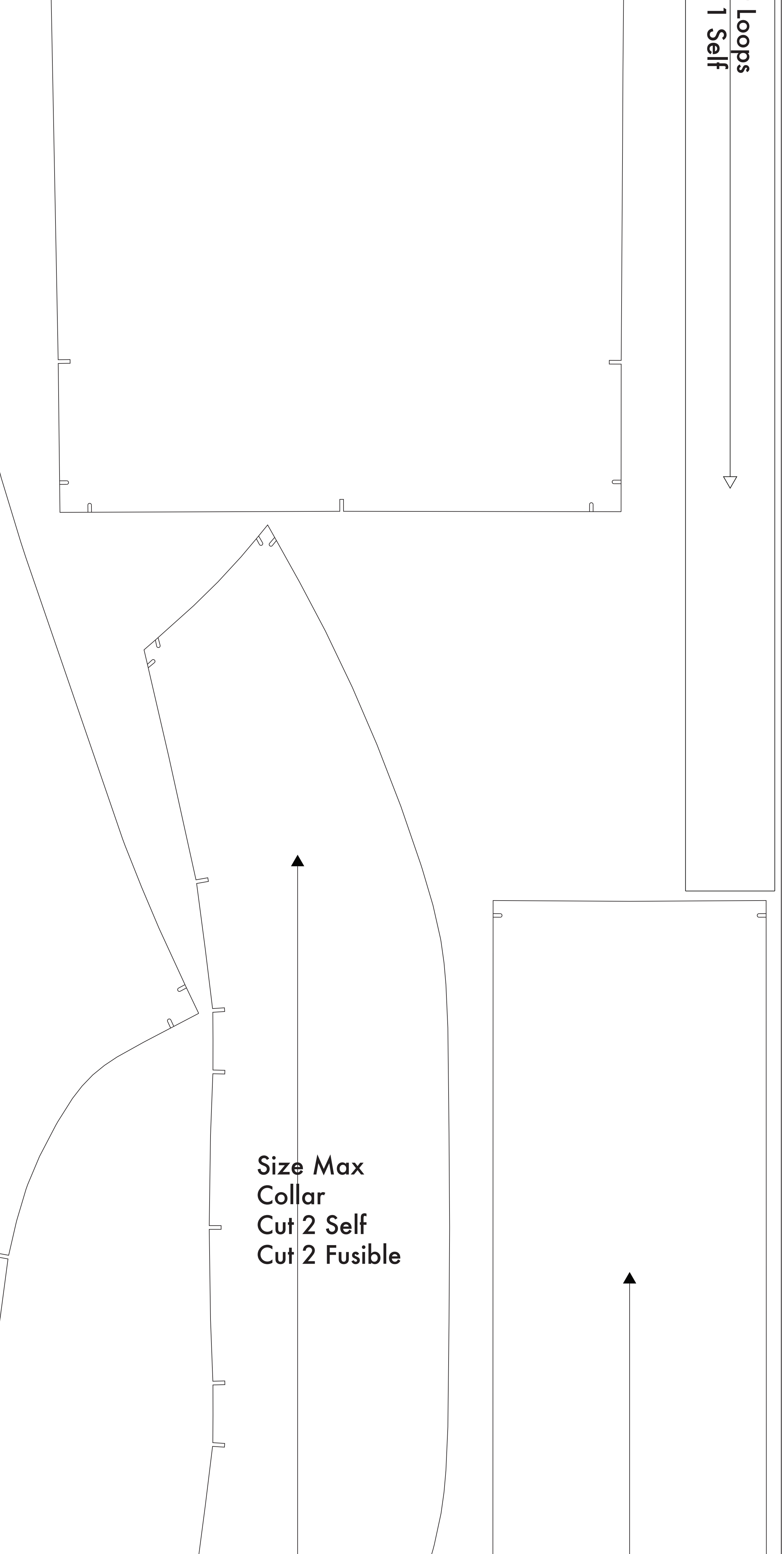
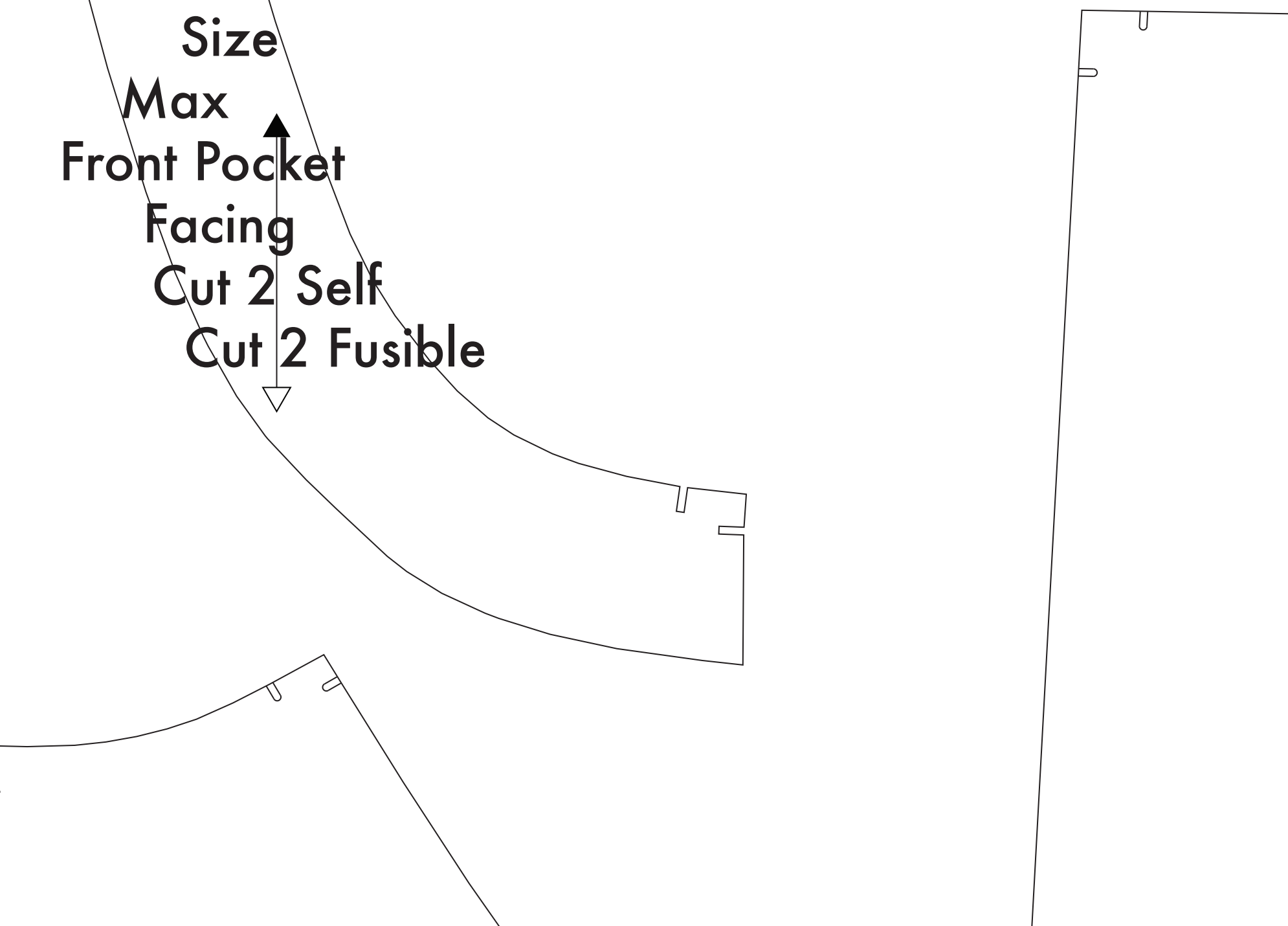
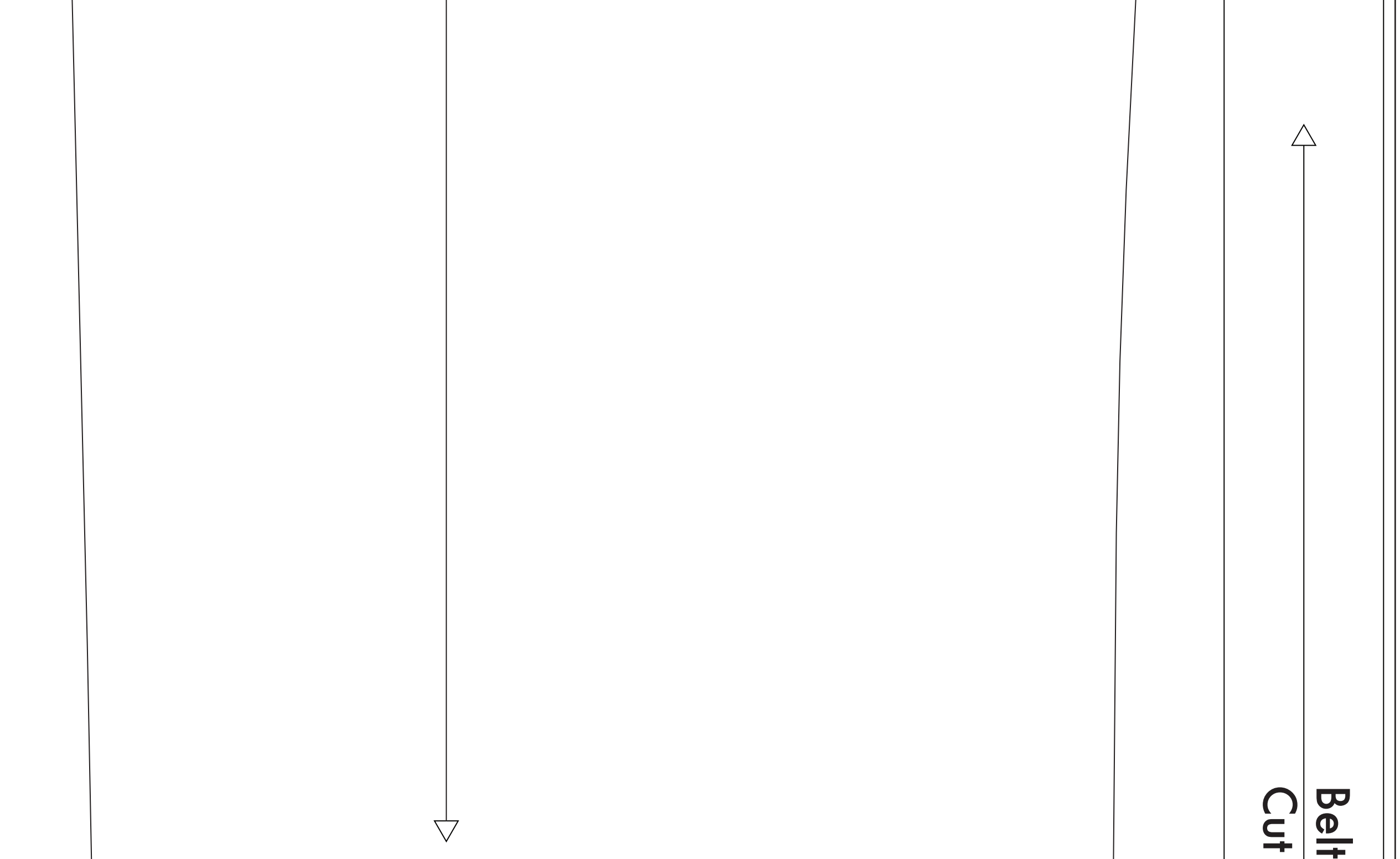
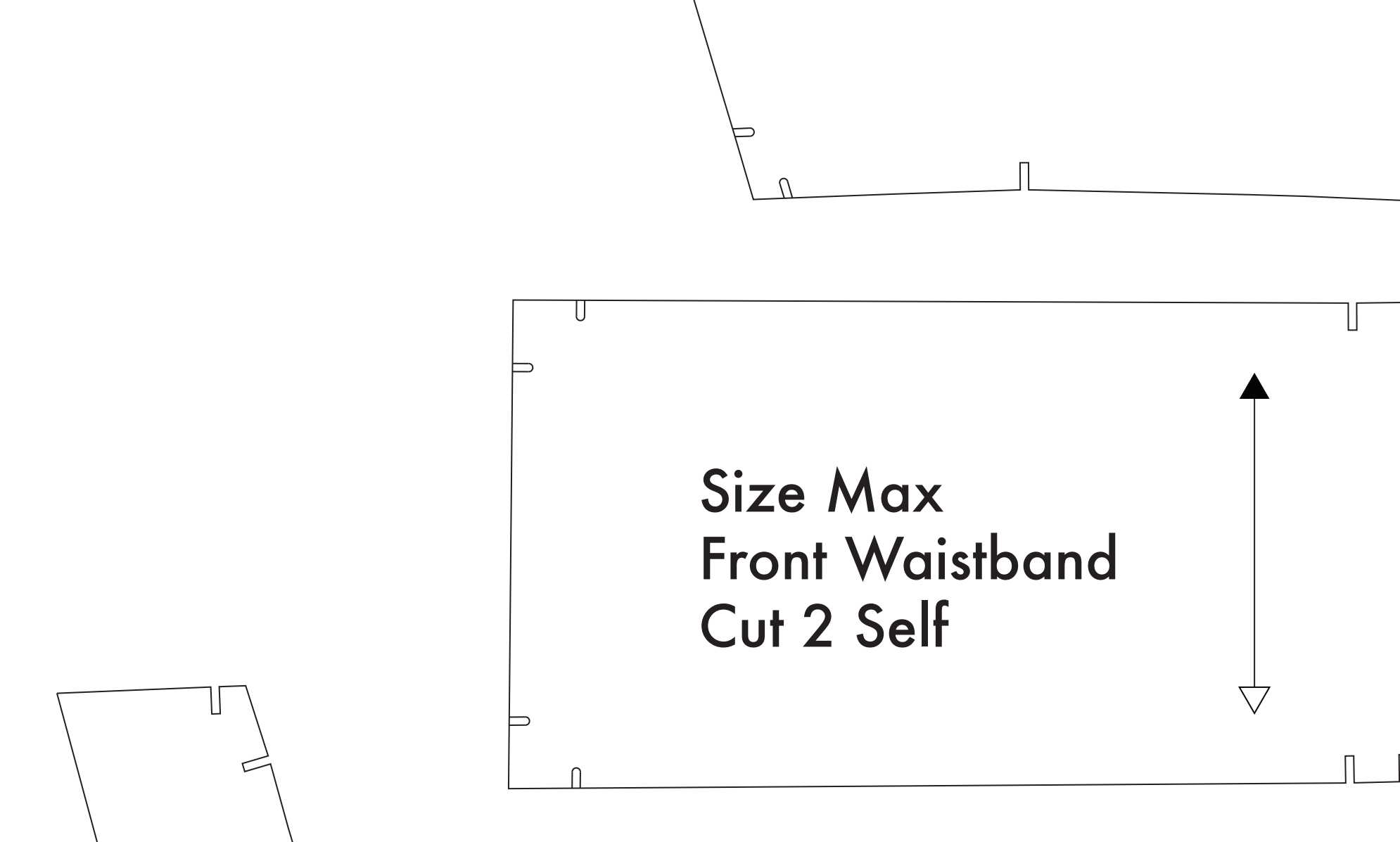
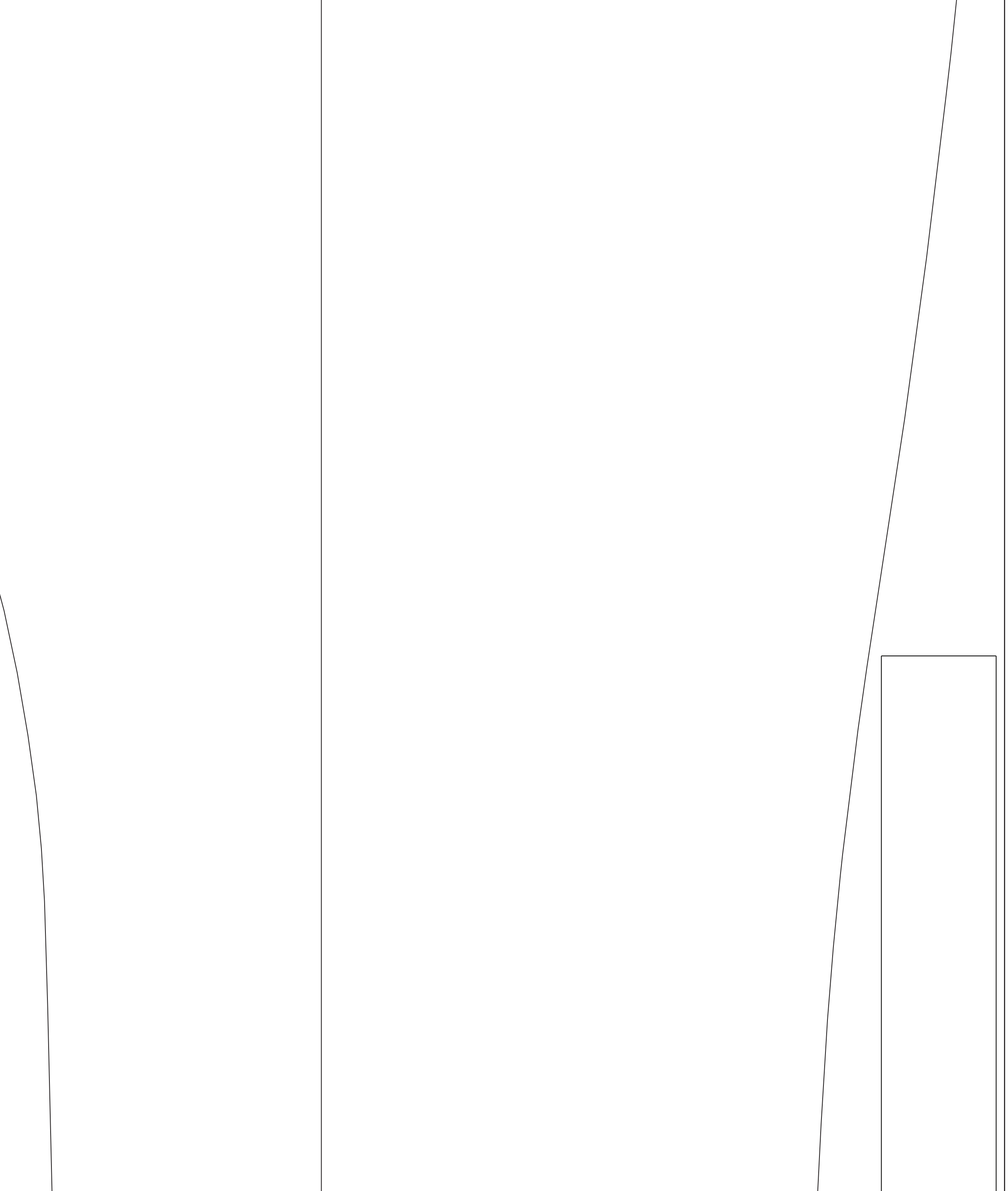
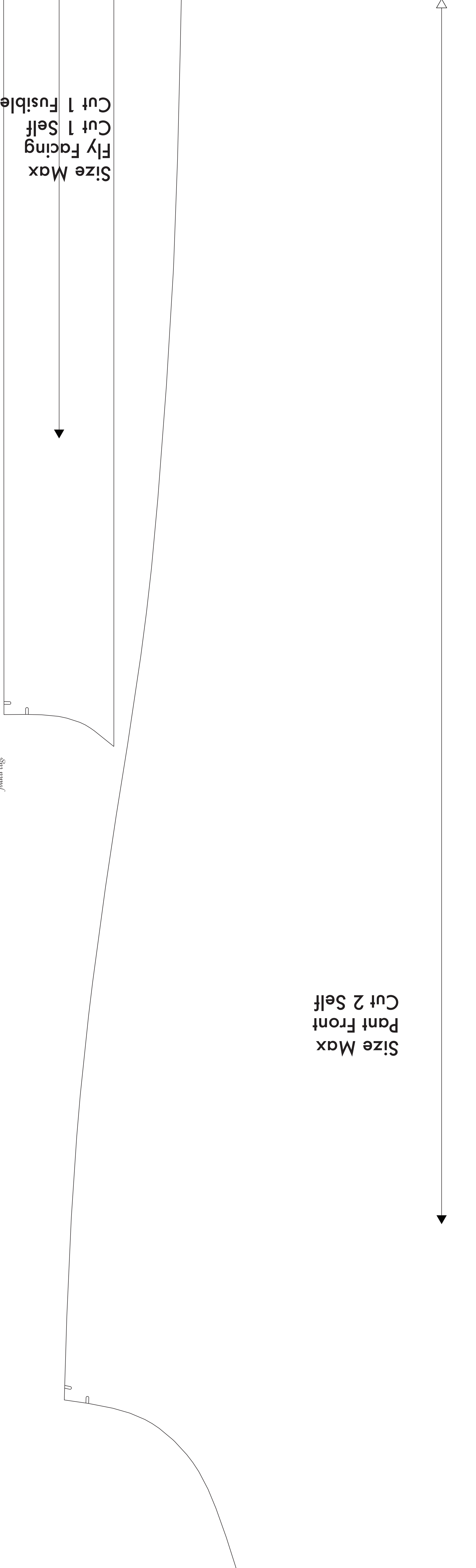
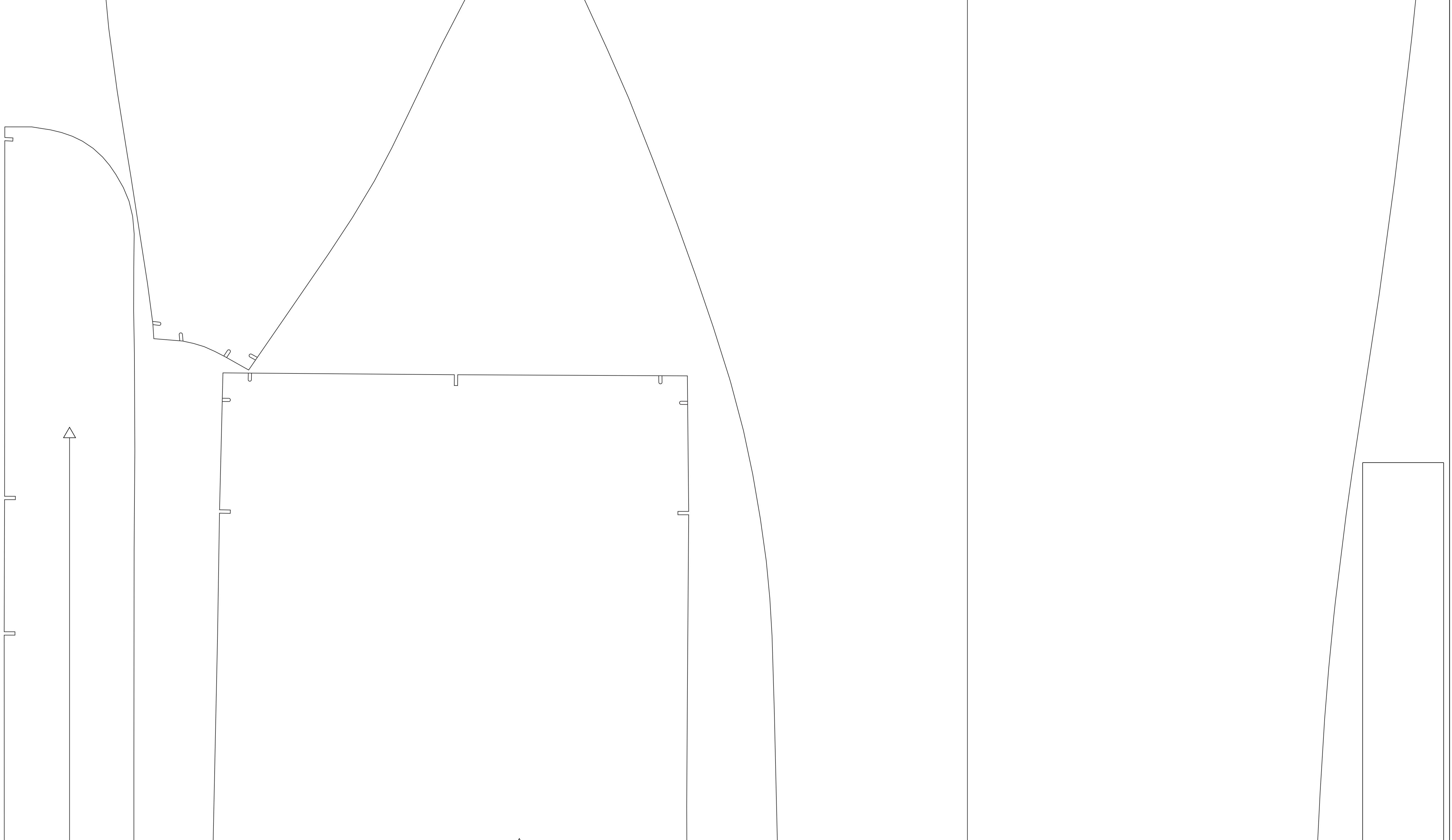
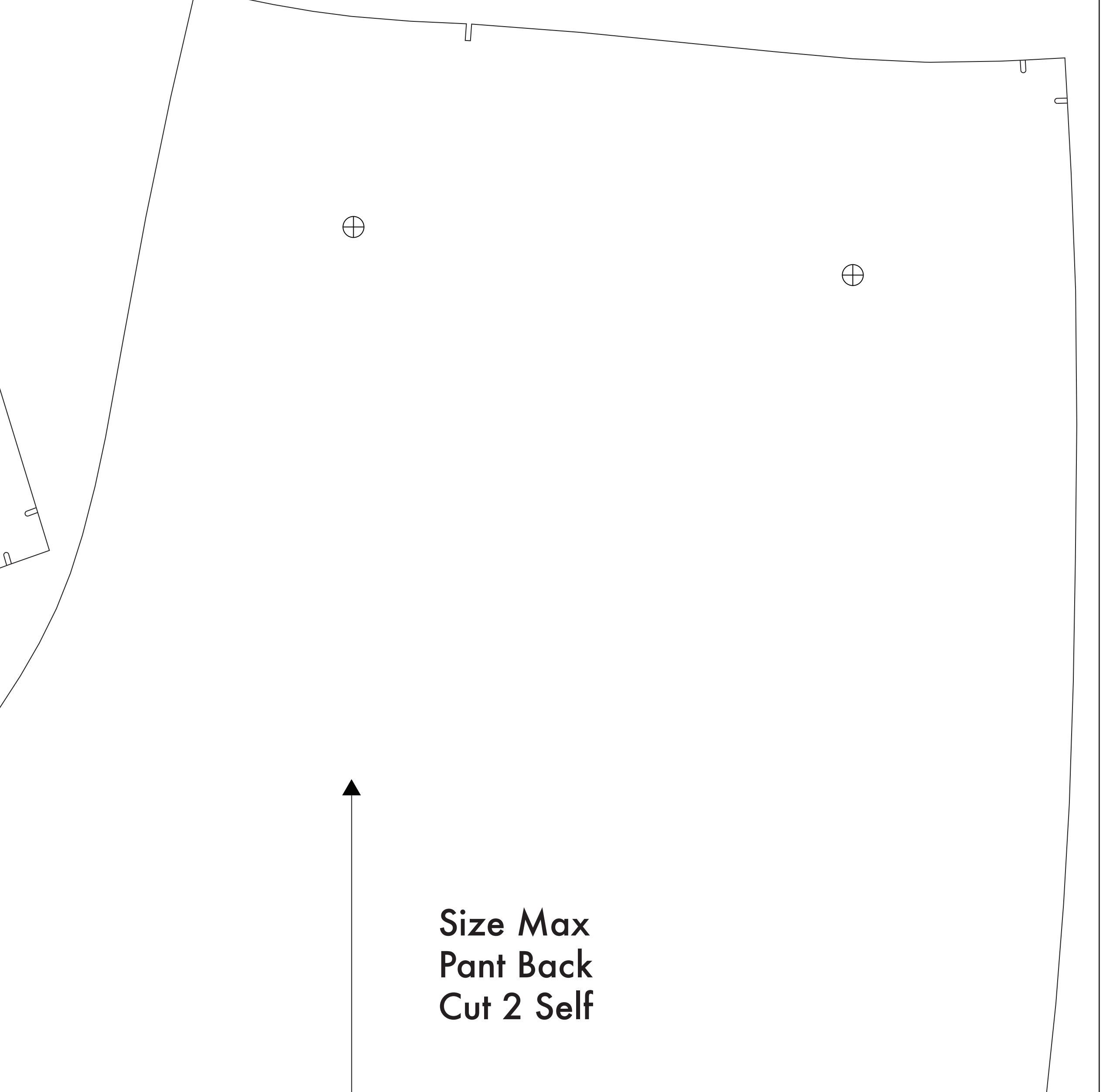
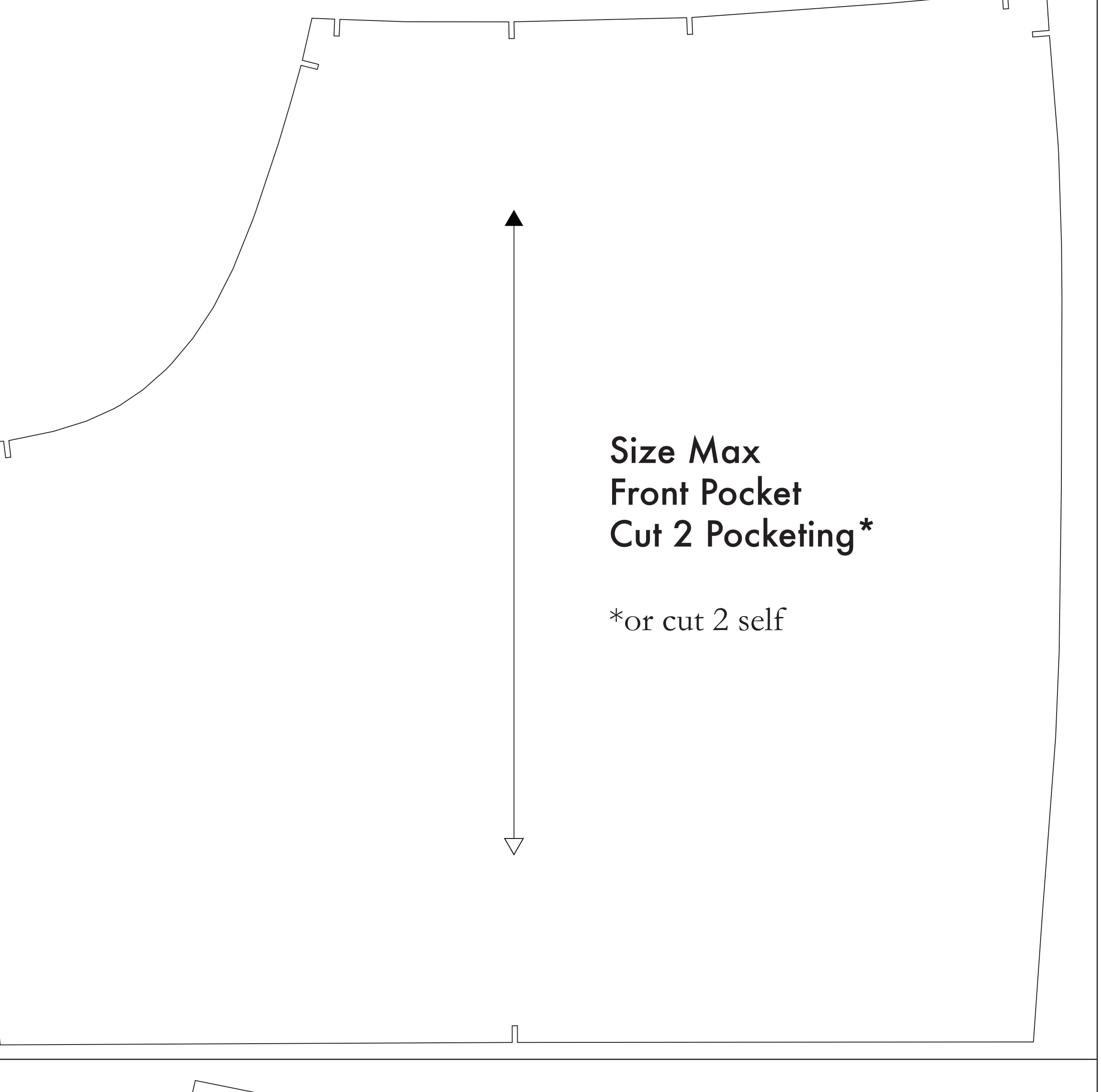
- SUPPLIES NEEDED**
- 3 1/2 YARDS OF 54" WIDE FABRIC
  - SHARP SCISSORS
  - REMOVABLE MARKING MEDIUM (chalk, wax, tailor's tack, etc.)
  - 1/8" NON-SERRATED ZIPPER
  - SEWING MACHINE
  - OPTIONAL:
    - 1/2 YARD OF THINNER POCKET FABRIC
    - FUSIBLE INTERFACING

- CUTTING INSTRUCTIONS**
1. From pattern: Lay out your pieces flat on a clean, flat surface. Lay out pieces together or pin on a wide foam board (1/2" or wider). Pin or staple the pieces together at approximately 12" intervals to prevent warping.
  2. Once your pieces are pinned, cut along the cut lines to remove any excess paper. This template should fit exactly on 54" wide or larger pieces of fabric that have been folded in half. If you have 54" wide fabric, you will need to cut the pattern in half to fit. **NOTE:** For materials with a nap, such as velvet, cut pieces with the nap in mind. For fabric with a frayed edge, such as denim, cut pieces with the frayed edge in mind.
  3. Fold your fabric in half along the longwise grain matching selvedge edge to selvedge edge. Subdivide in the fold (folded edge of fabric). The narrow heading keeps the fabric from stretching or fraying. When it has no edge, the narrow heading may fraying, though just as frequently, a sharp folded line will be found. Avoid this edge in your cut pieces as the narrow heading easily differs from the main body of the fabric.
  4. Place your paper template on top your fabric, matching the folded edge of the fabric with the side of the paper marked "folded edge".
  5. Place pins throughout the template pinning together both layers of fabric as well as the paper.
  6. Cut around the perimeter of each piece.
  7. Leaving the pin in place, you will now need to snap each of the notches, taking care not to snap beyond the end of the fabric.
  8. Note: An *etc.* label means you are to finish the pattern piece with the same finishing technique used in the other pieces. Do not pin these pieces when cutting.
  9. Mark all corners and notches using a pin, bring together both layers of fabric and the pattern, mark the corner of each fold back with chalk, wax or other removable, repositionable tool. A tailor's tack may also be used. These corners and notches are marked on the Backing Pattern.
  10. The only *etc.* label means you are to finish the pattern piece with the same finishing technique used in the other pieces. Do not pin these pieces when cutting.
  11. **PERSONAL:** Cut fusible interfacing pieces (see **NOTE C** for more info). Pattern pieces that use fusible will be marked with the directions "Cut 2 Fusible" or "Cut 1 Fusible". These pieces are the Collar Fly, Fly Facing, Front Pocket Facing, and Front Pocket Bagging. To use the fusible, lay the material down with the glue side facing up. Press the iron over the area of fusible interfacing material. If you are not using fusible interfacing material, then the Front Pocket Bag may be cut without your fusible pieces. **WARNING:** Please do not use the other notches on other materials - You will just end up cutting a hole in your cut pieces.

**NOTE A: FABRIC LESS THAN 54" WIDE**  
 If your fabric is less than 54" wide, you will need to cut with your pieces cut into 27" wide by your paper and pieces 27" wide by your paper to cut. To help you get the most out of your fabric, you will need to cut the pieces in two 27" wide pieces. This will require you to cut the pieces in two 27" wide pieces. To ensure the pieces are cut correctly, you will need to cut the pieces in two 27" wide pieces. To ensure the pieces are cut correctly, you will need to cut the pieces in two 27" wide pieces.

**NOTE B: FABRIC WITH AN OR DIRECTIONAL PATTERN**  
 If your fabric has an ornate, directional pattern, you will need to cut the pieces in two 27" wide pieces. To ensure the pieces are cut correctly, you will need to cut the pieces in two 27" wide pieces. To ensure the pieces are cut correctly, you will need to cut the pieces in two 27" wide pieces.

**NOTE C: USING FUSIBLE INTERFACING**  
 Fusible interfacing is a material that sticks to clothes, fabric, or other materials. It is used to stiffen fabric and to keep it from stretching. It is used to stiffen fabric and to keep it from stretching. It is used to stiffen fabric and to keep it from stretching.



Before cutting your fabric, measure this square to make sure that the pattern is scaled correctly!  
 \*Some printers and software will automatically make large scale images which will affect the fit.  
**The inner square should measure 4" x 4"**  
**The outer square should measure 12cm x 12cm**