



JUMPSUIT CUTTING INSTRUCTIONS
DOCUMENTE 121 JUMPSUIT CUTTING INSTRUCTIONS V1.0
www.jumpsuit.it

- SUPPLIES NEEDED**
- 3 YARDS OF 54" WIDE FABRIC
 - SHARP SCISSORS
 - REMOVABLE MARKING MEDIUM (chalk, wax, tailor's tack, etc.)
 - 1 - 24" NON-SEPARATING ZIPPER
 - THREAD
 - SEWING MACHINE
- optional:
- 1/2 YARD OF THINNER POCKET FABRIC
 - FUSIBLE INTERFACING

CUTTING INSTRUCTIONS

1. These patterns were created from a document that on sheets of standard size paper and tape the pieces together, or print on a wide-format printer (36" or wider). These sheets offer this service for approximately \$12. If available to you, the B&B recommended format printing.
2. Once your pattern is printed, cut along the document rectangle to remove any excess paper. This template should fit exactly on a 37" wide or larger piece of fabric that has been folded in half. If your fabric is less than 37" wide use **NOTE A**. For maximum yield this pattern is laid out for fabric that does not have a direction. For fabric with a nap, such as velvet or tulle, or fabric with a clear directional print use **NOTE B**.
3. Fold your fabric in half along the lengthwise grain matching selvage edge to selvage edge. Subdivide the self-finished edge of fabric. This center hank keeps the fabric from stretching or fraying. Observe a line on an edge that resembles any fringe, though just as frequently, a clearly finished line will be found. Avoid this edge in your cut pieces as the texture frequently differs from the main body of the fabric.
4. Place the paper template on top your fabric, matching the folded edge of the fabric with the side of the paper marked "folded edge".
5. Place pins throughout the template pinning together both layers of fabric as well as the paper.
6. Cut around the perimeter of each piece.
7. Leaving the pins in place, you will need need to snip each of the notches, taking care to not snip beyond the end of the crease.

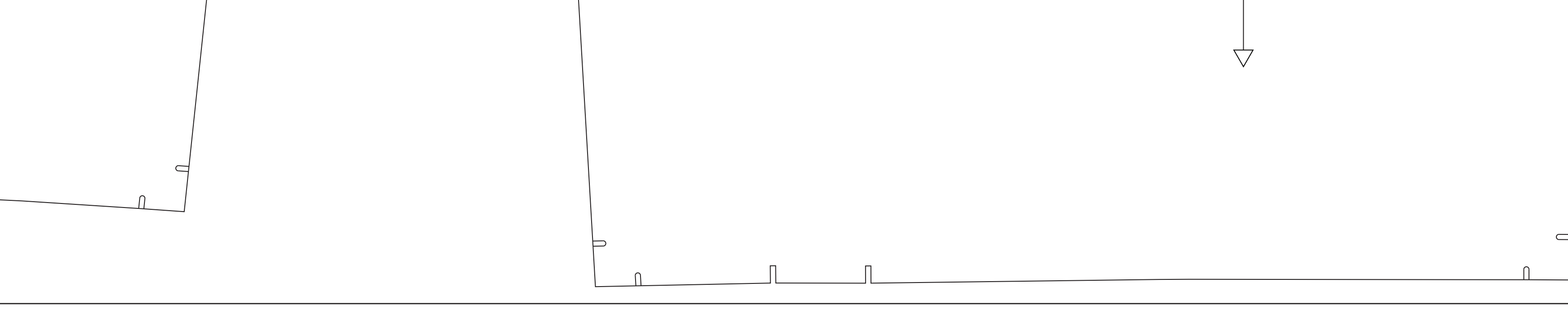
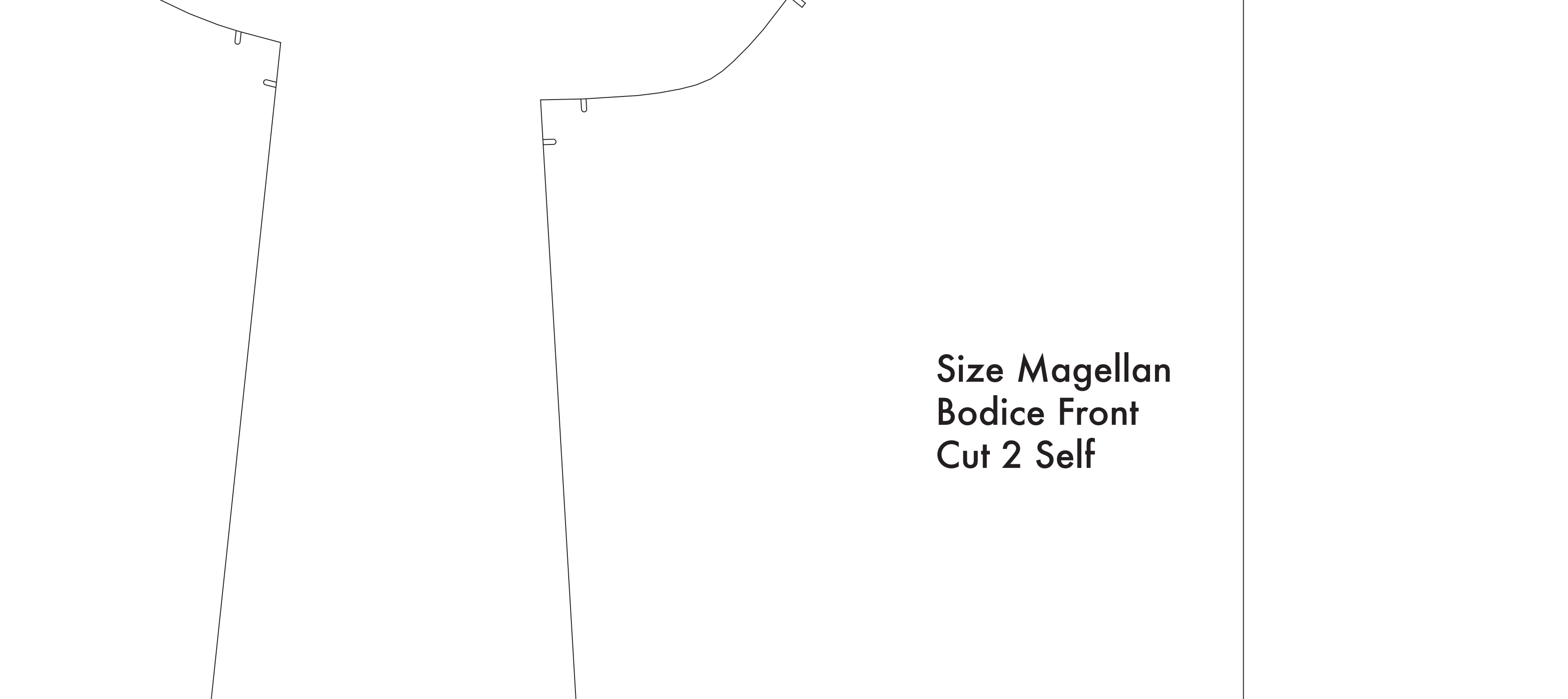
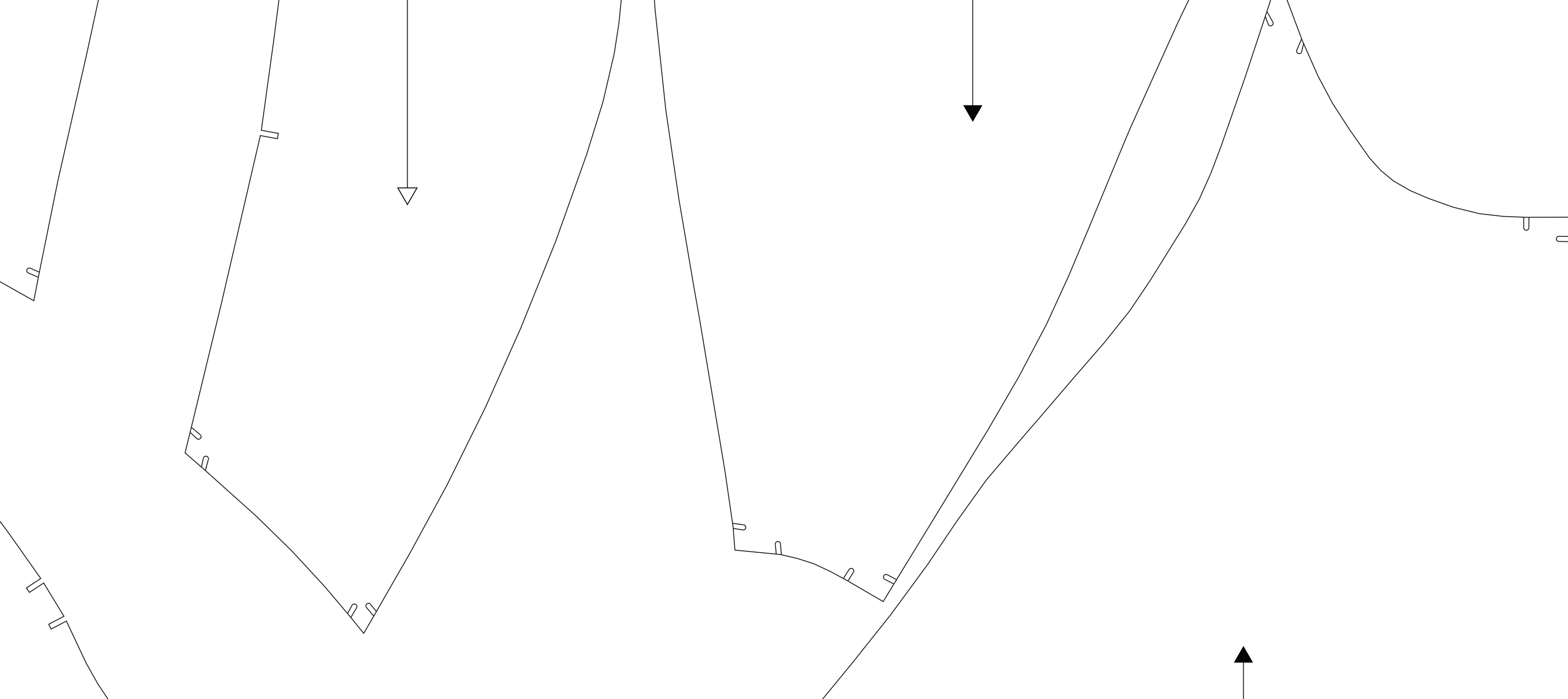
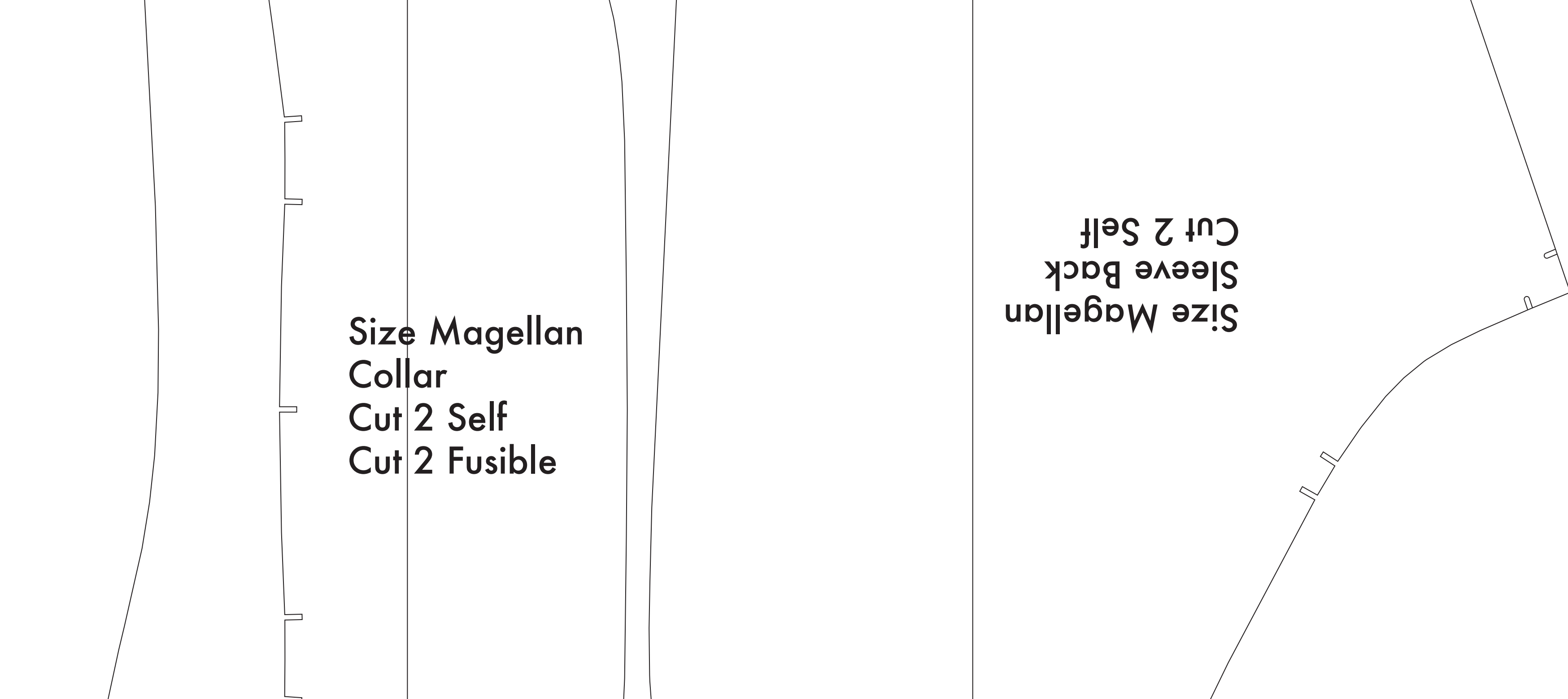
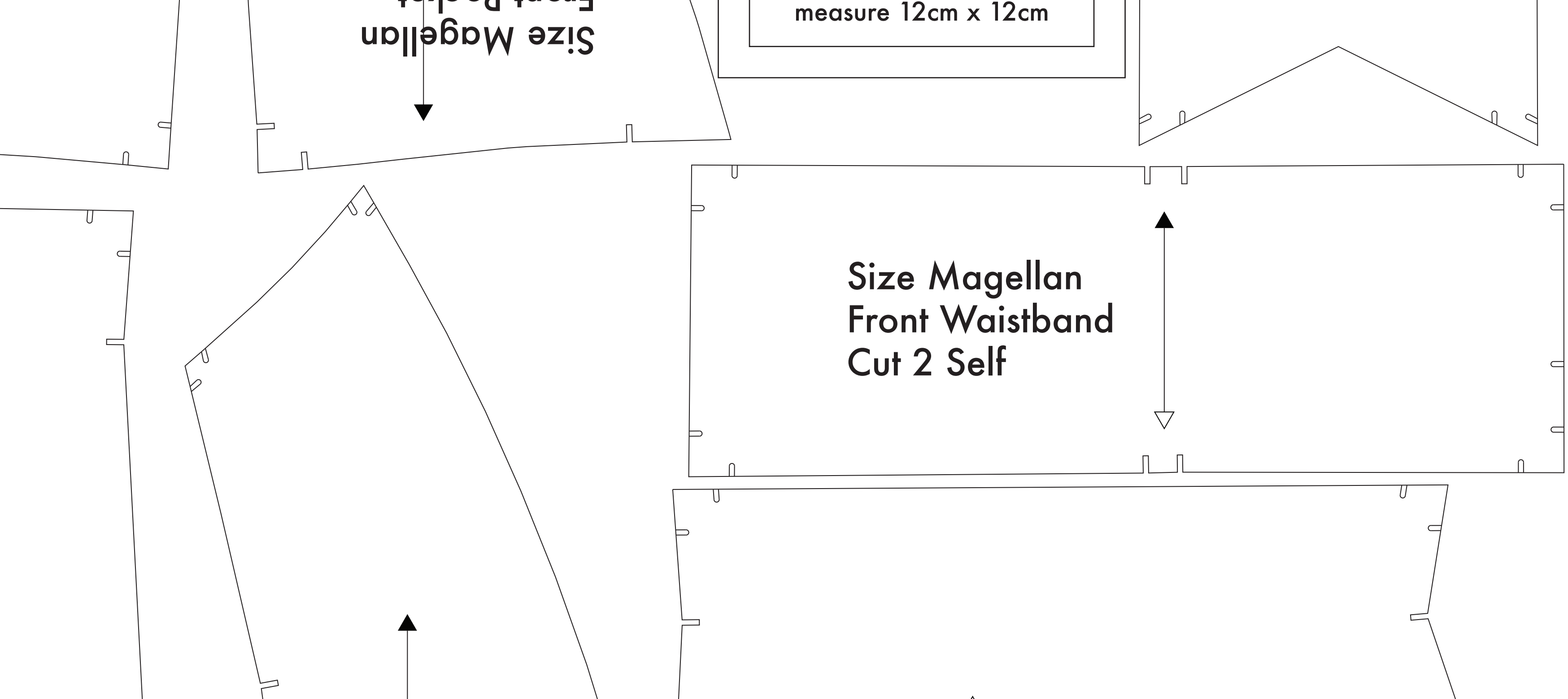
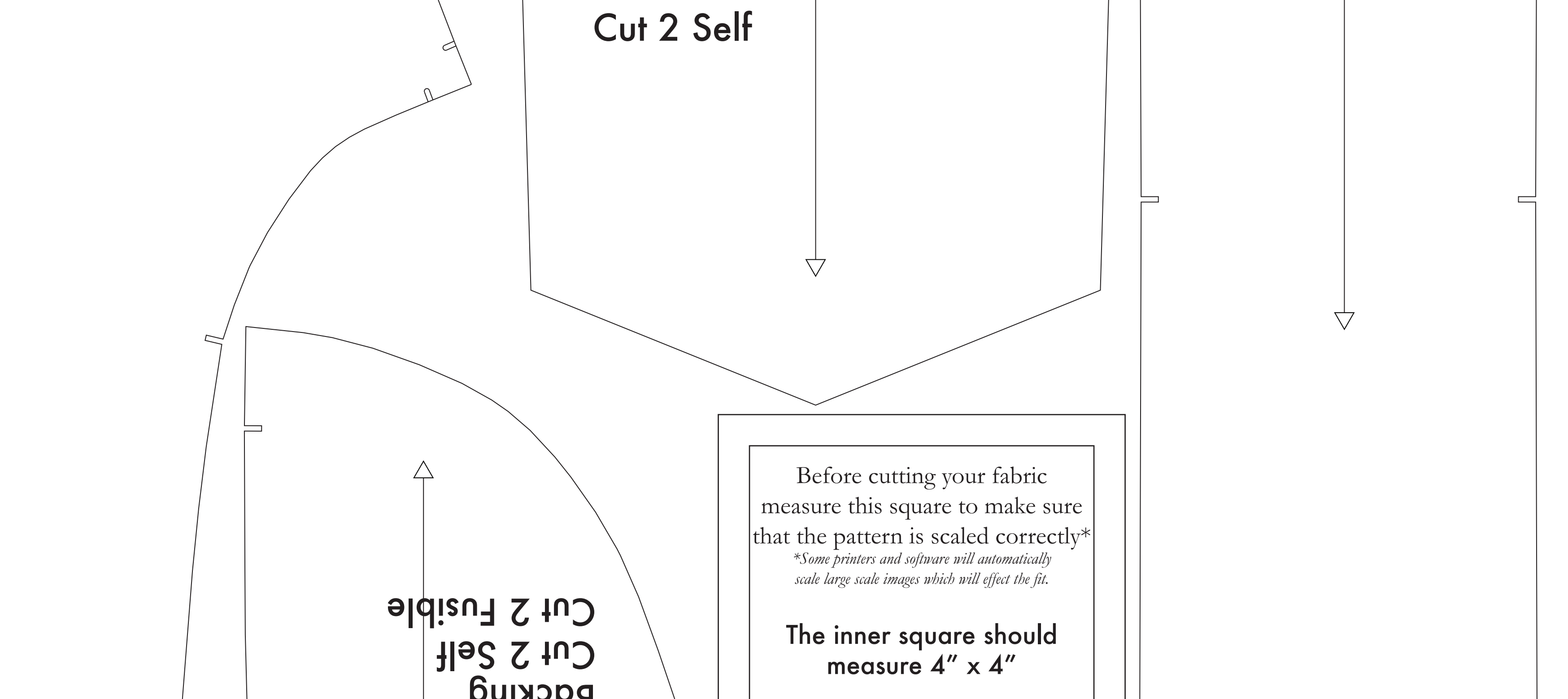
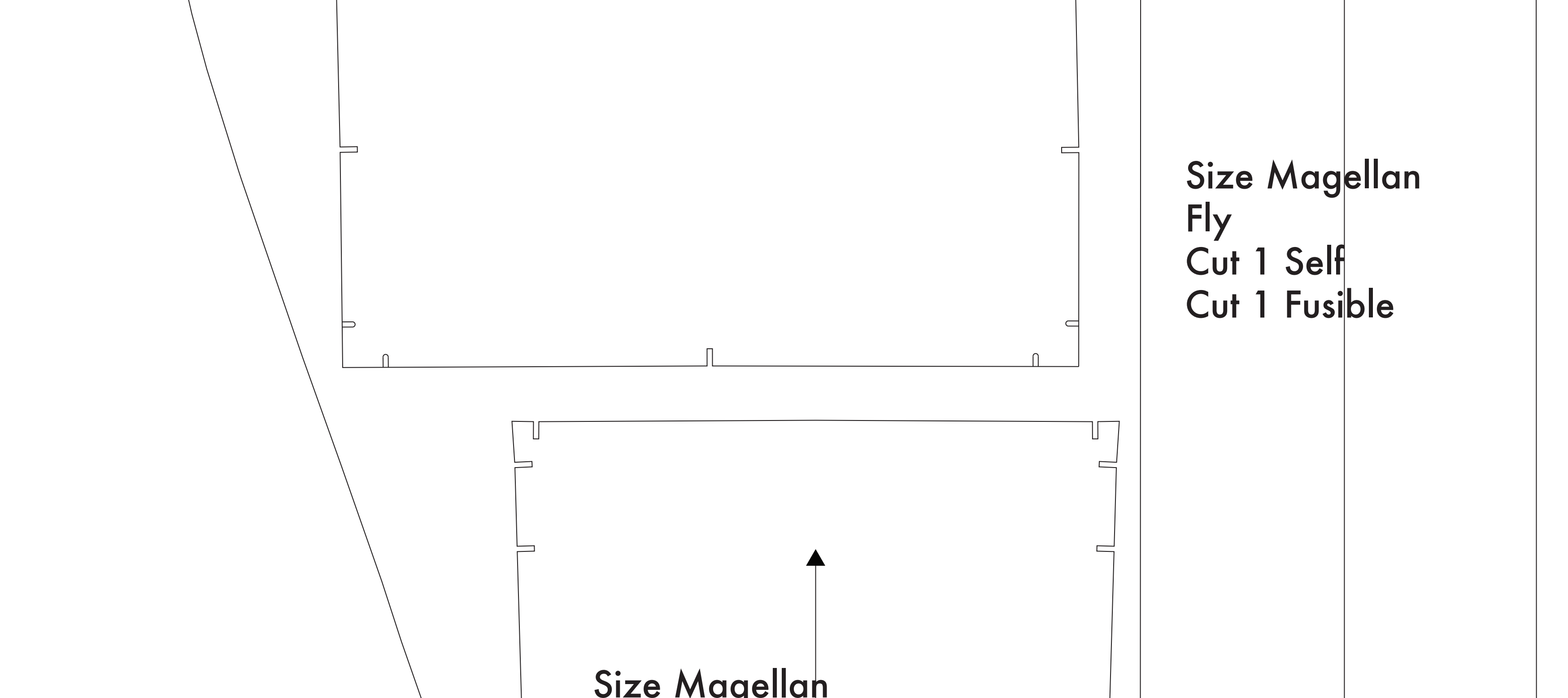
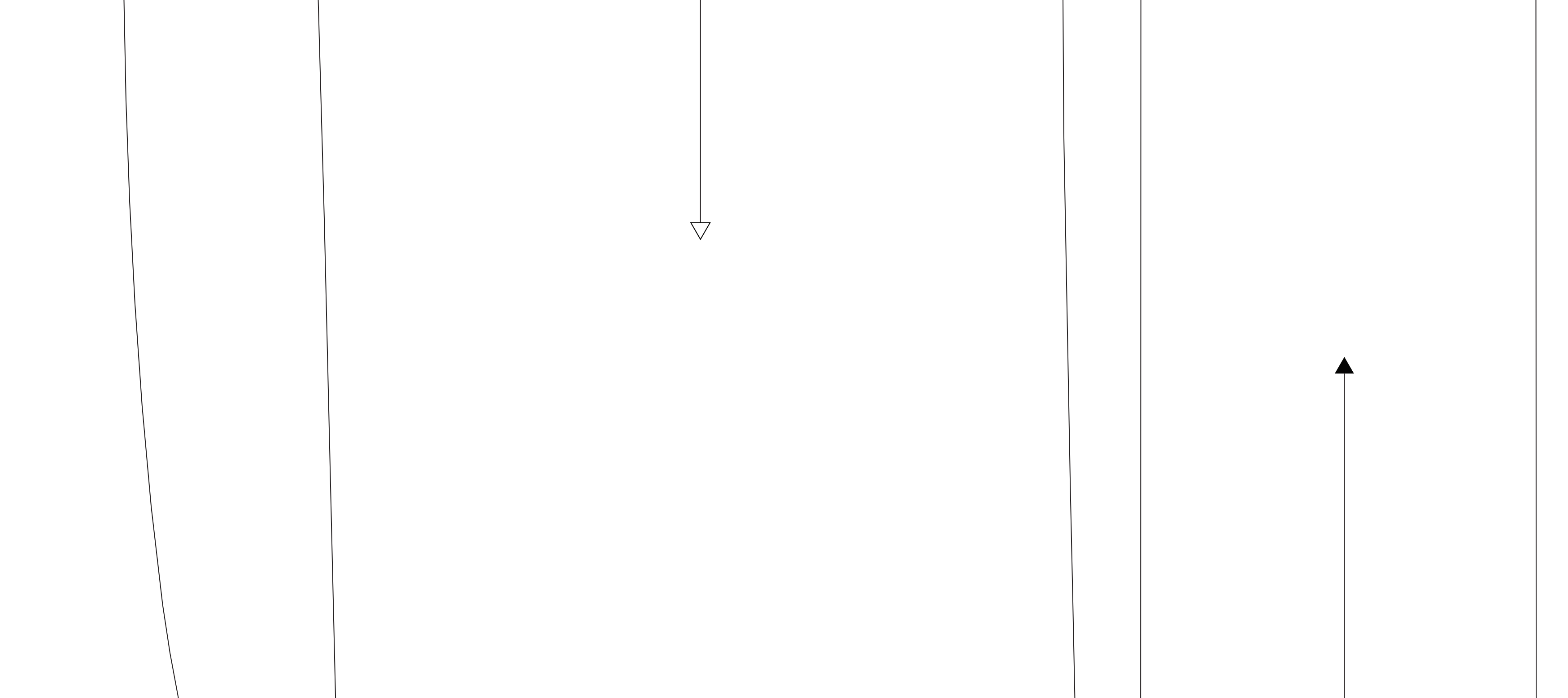
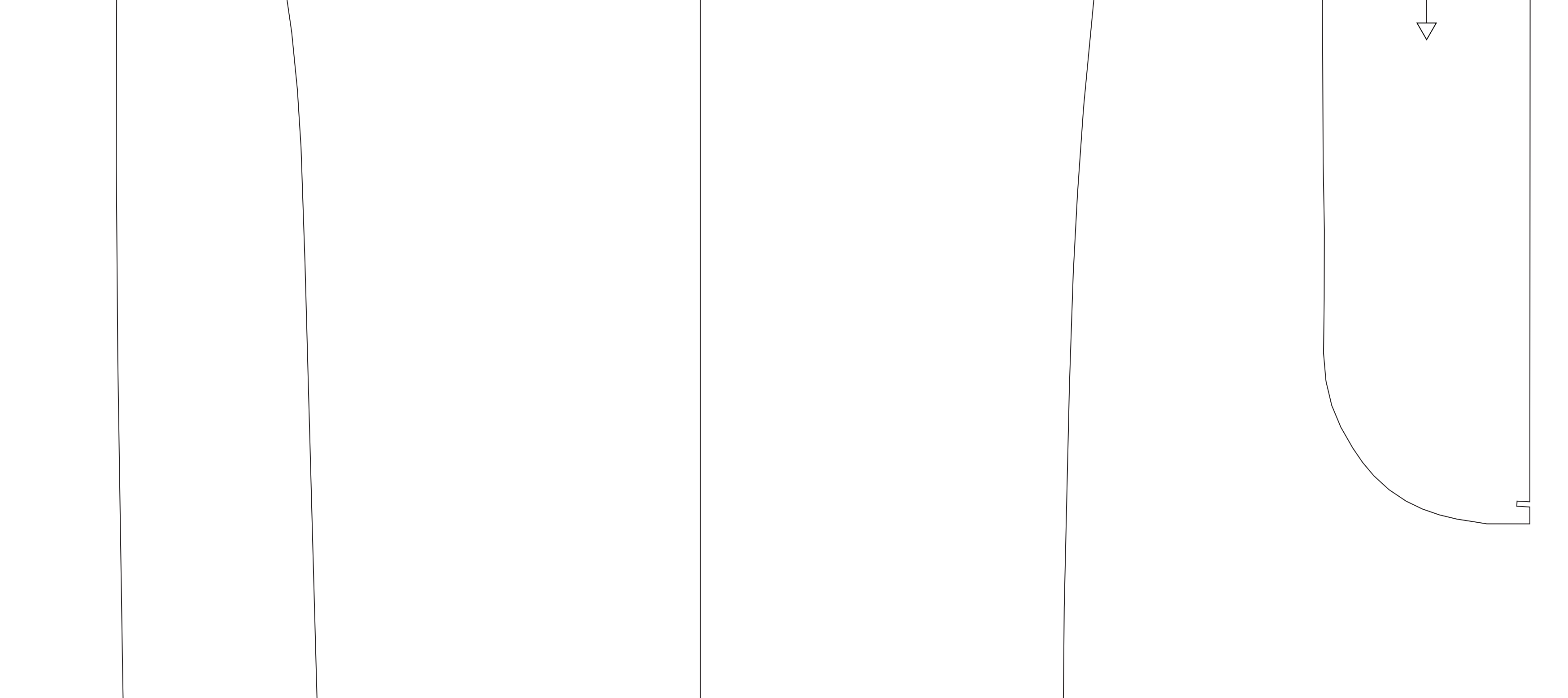
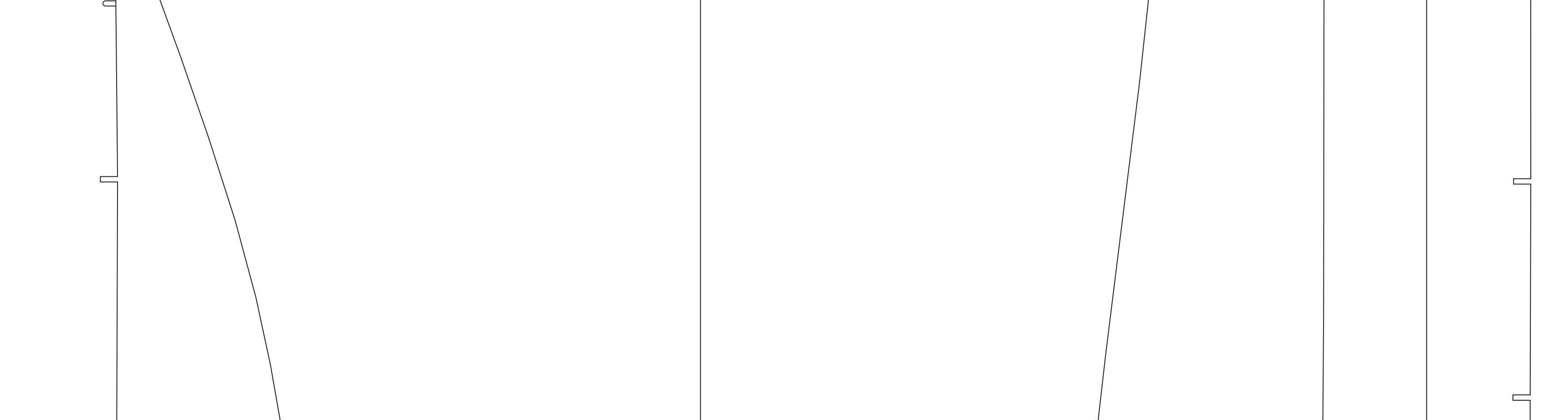
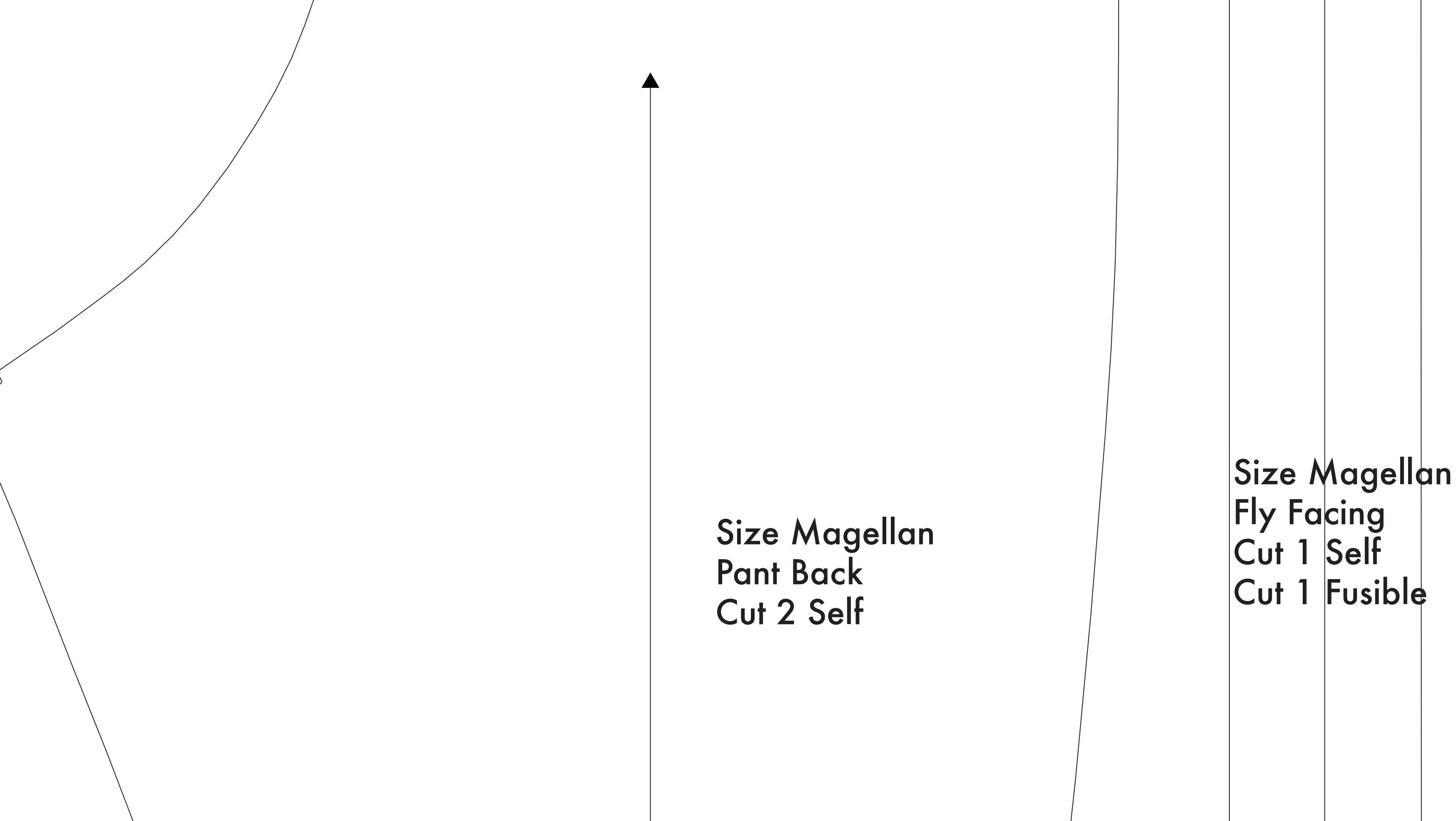
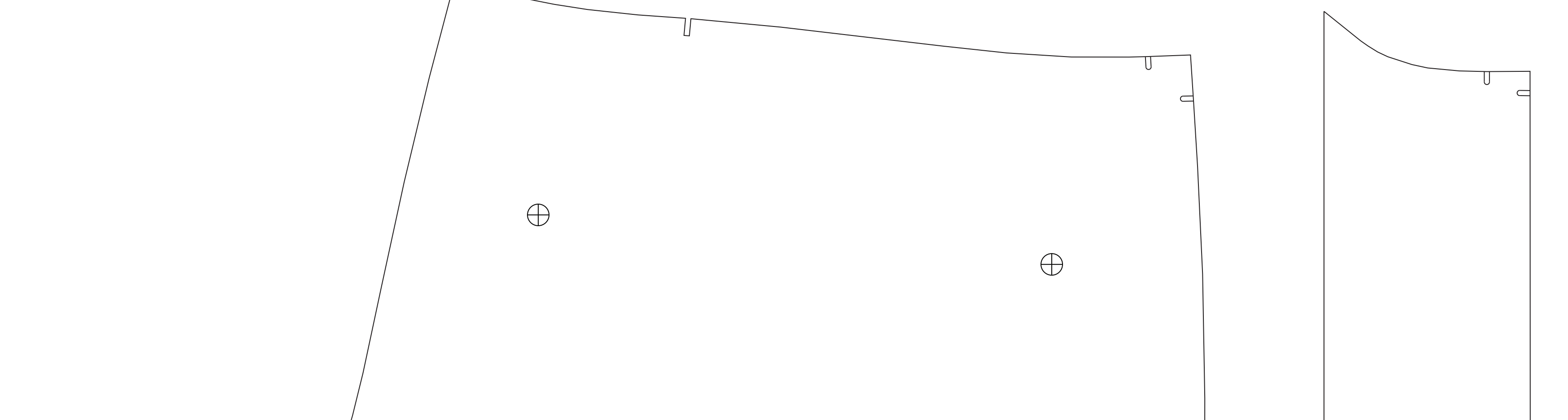
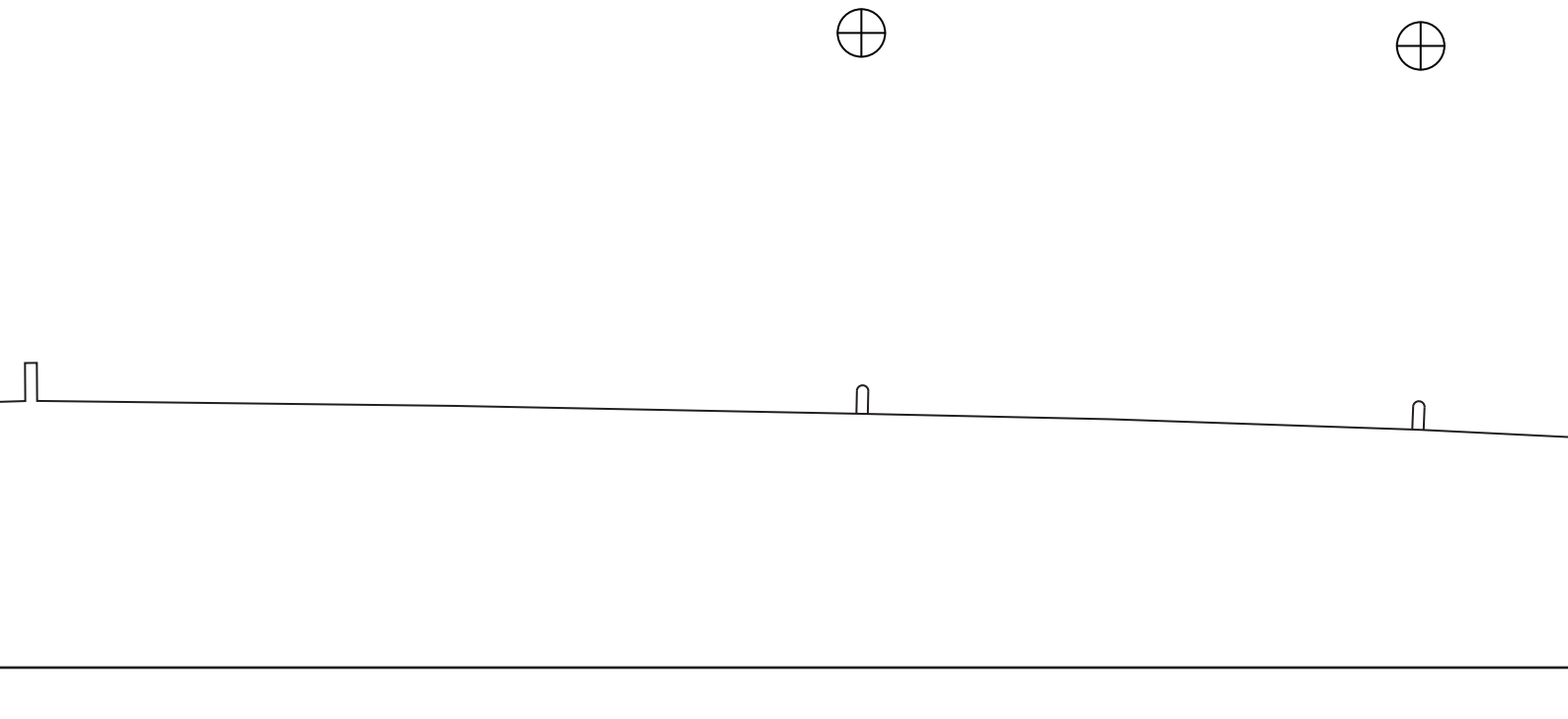
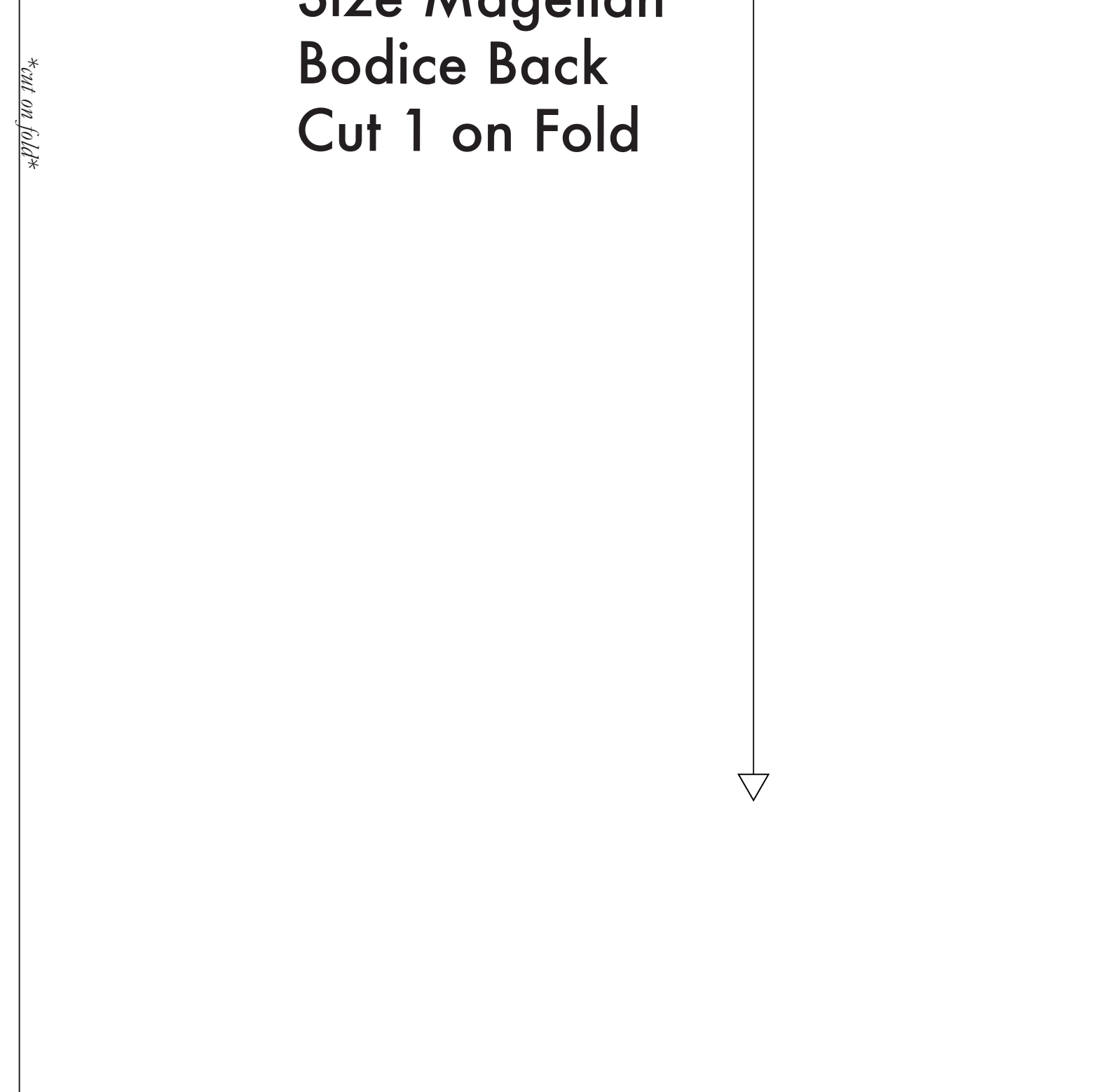
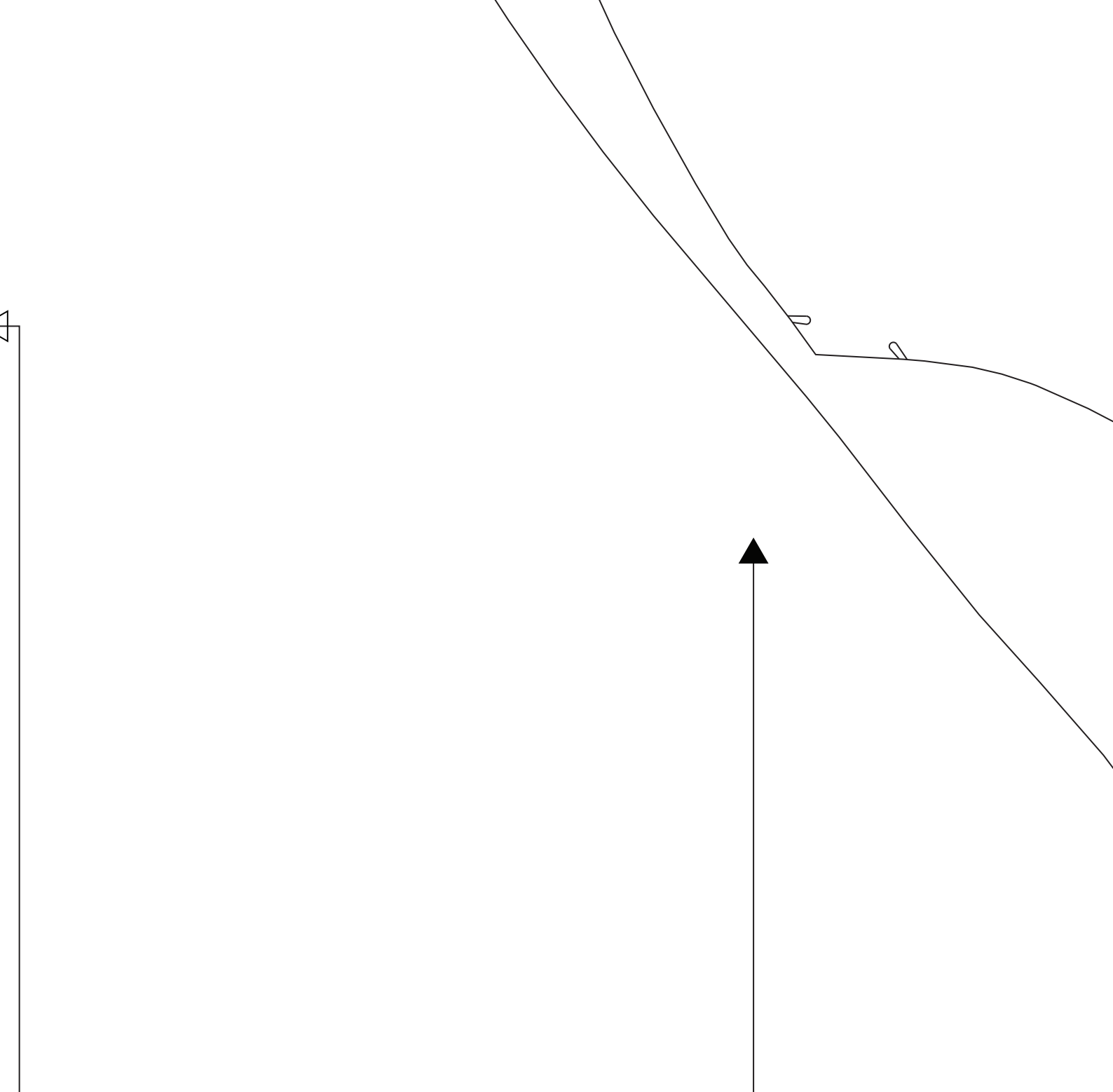
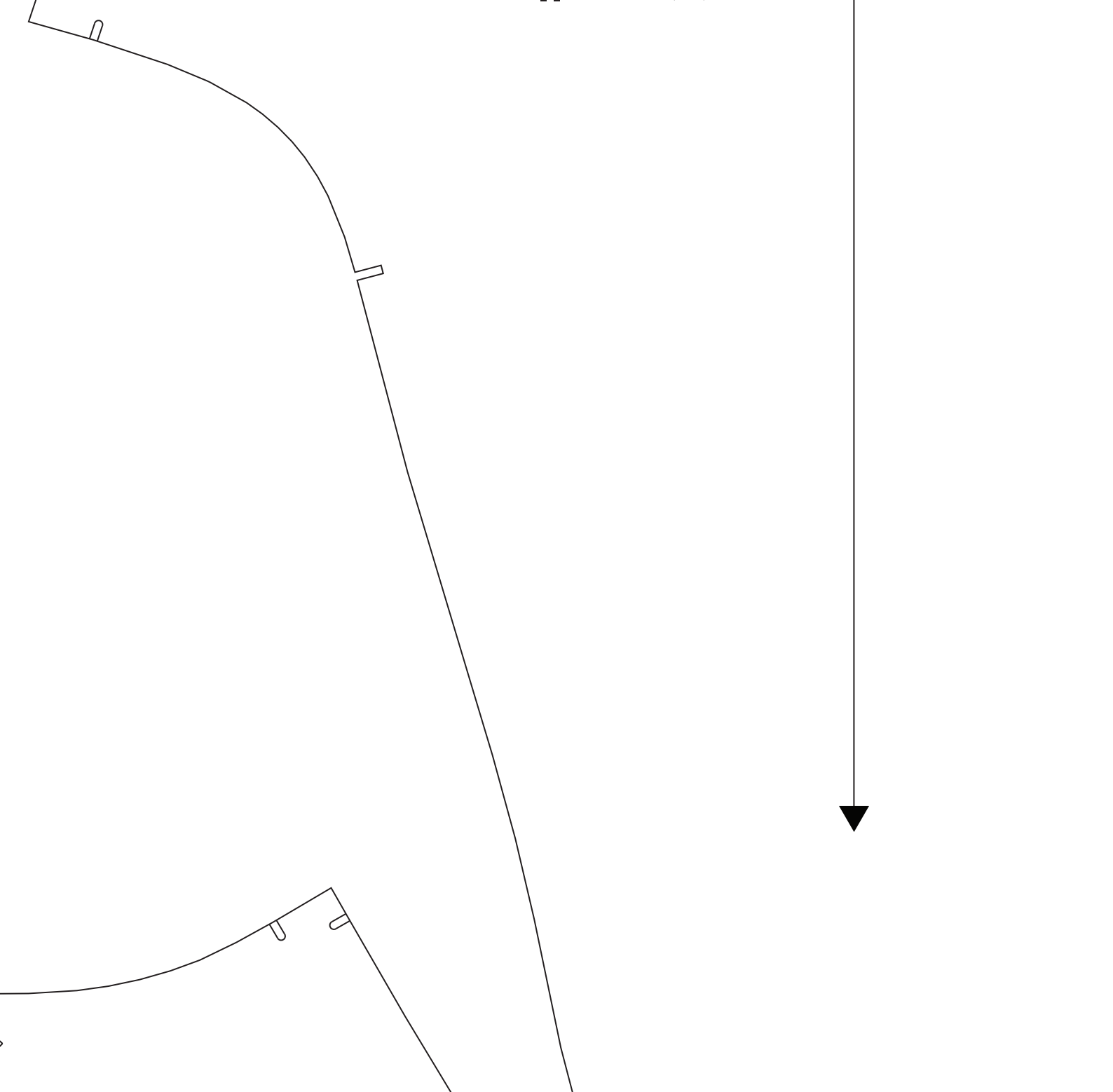
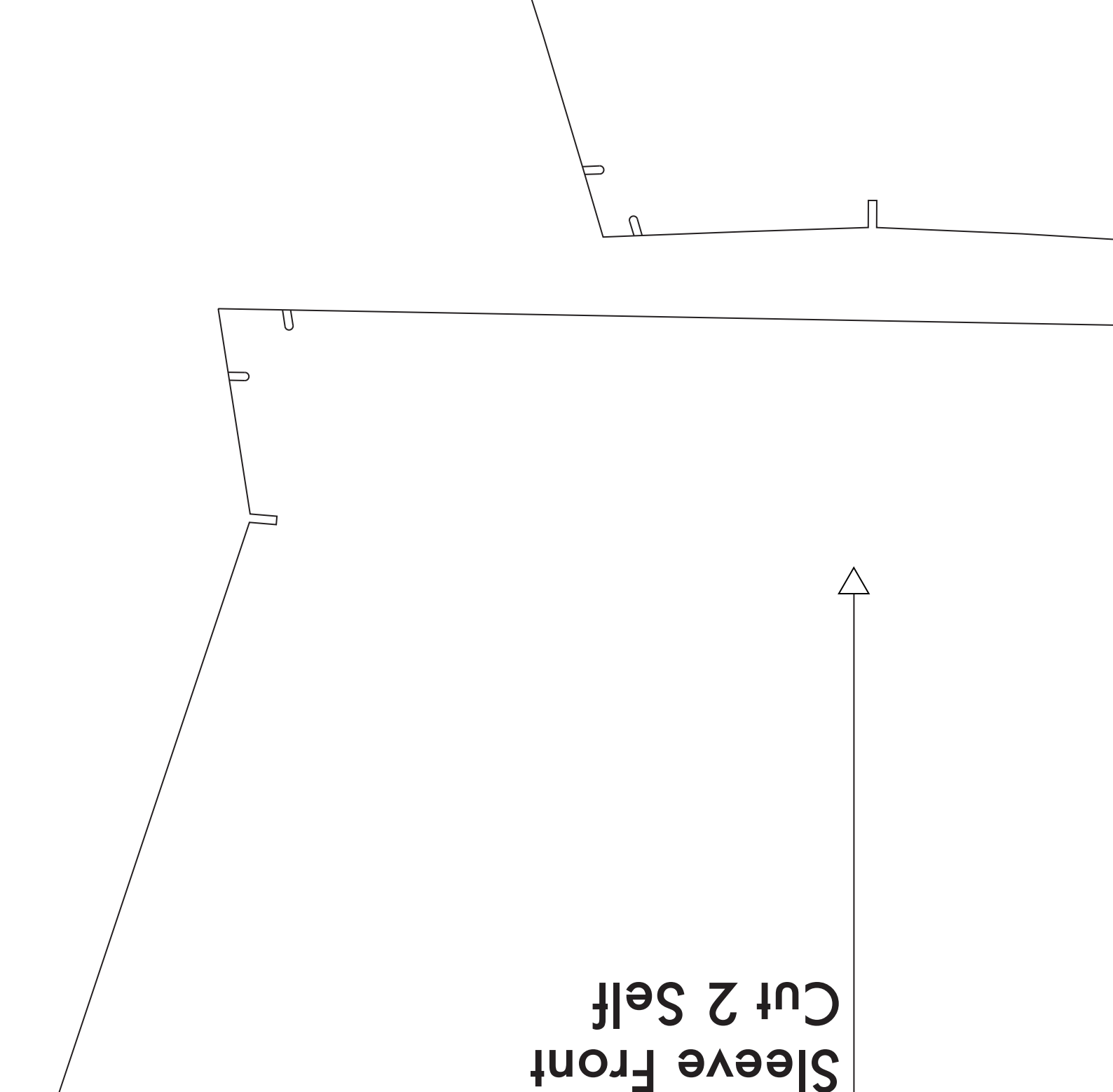
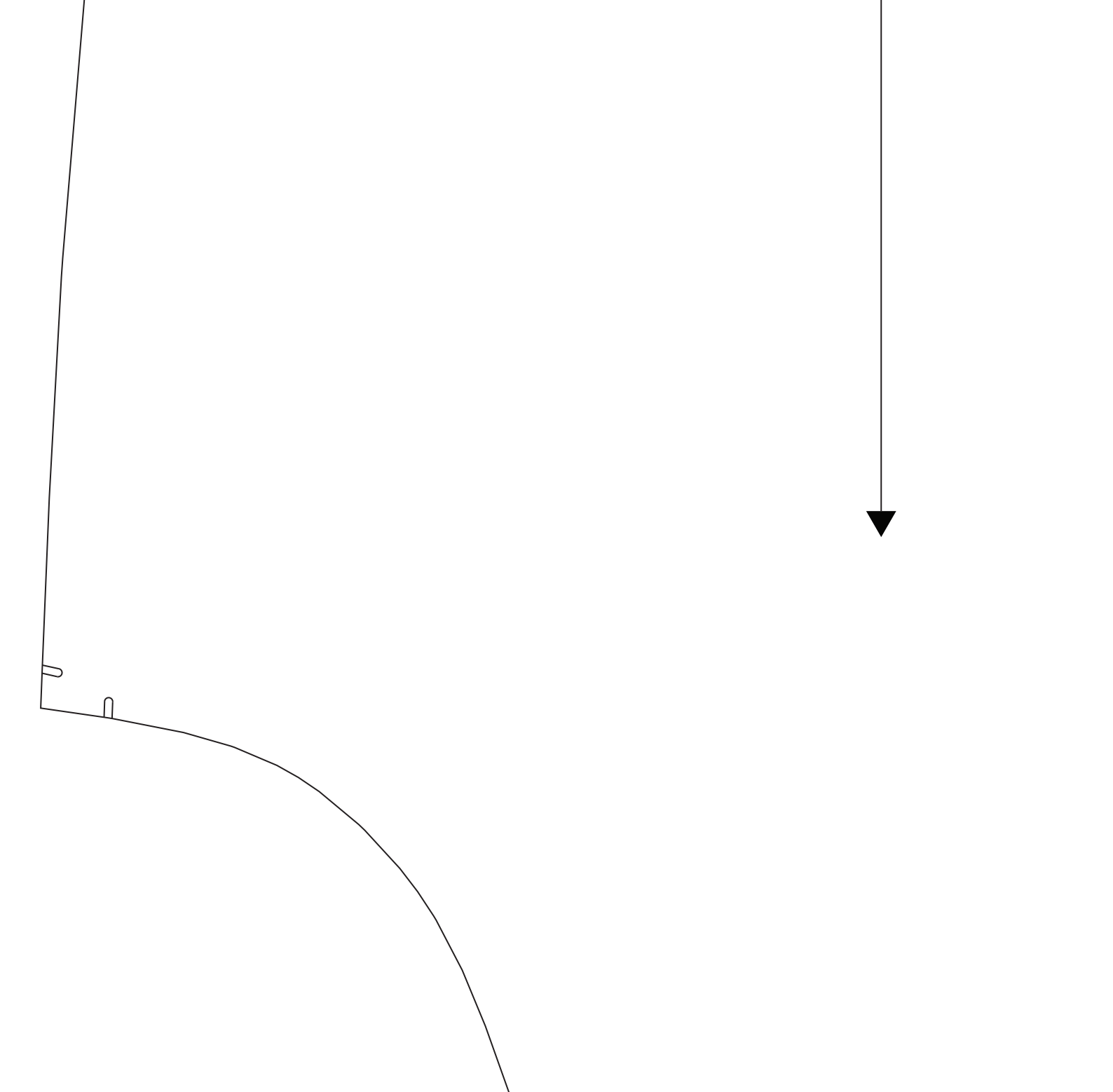
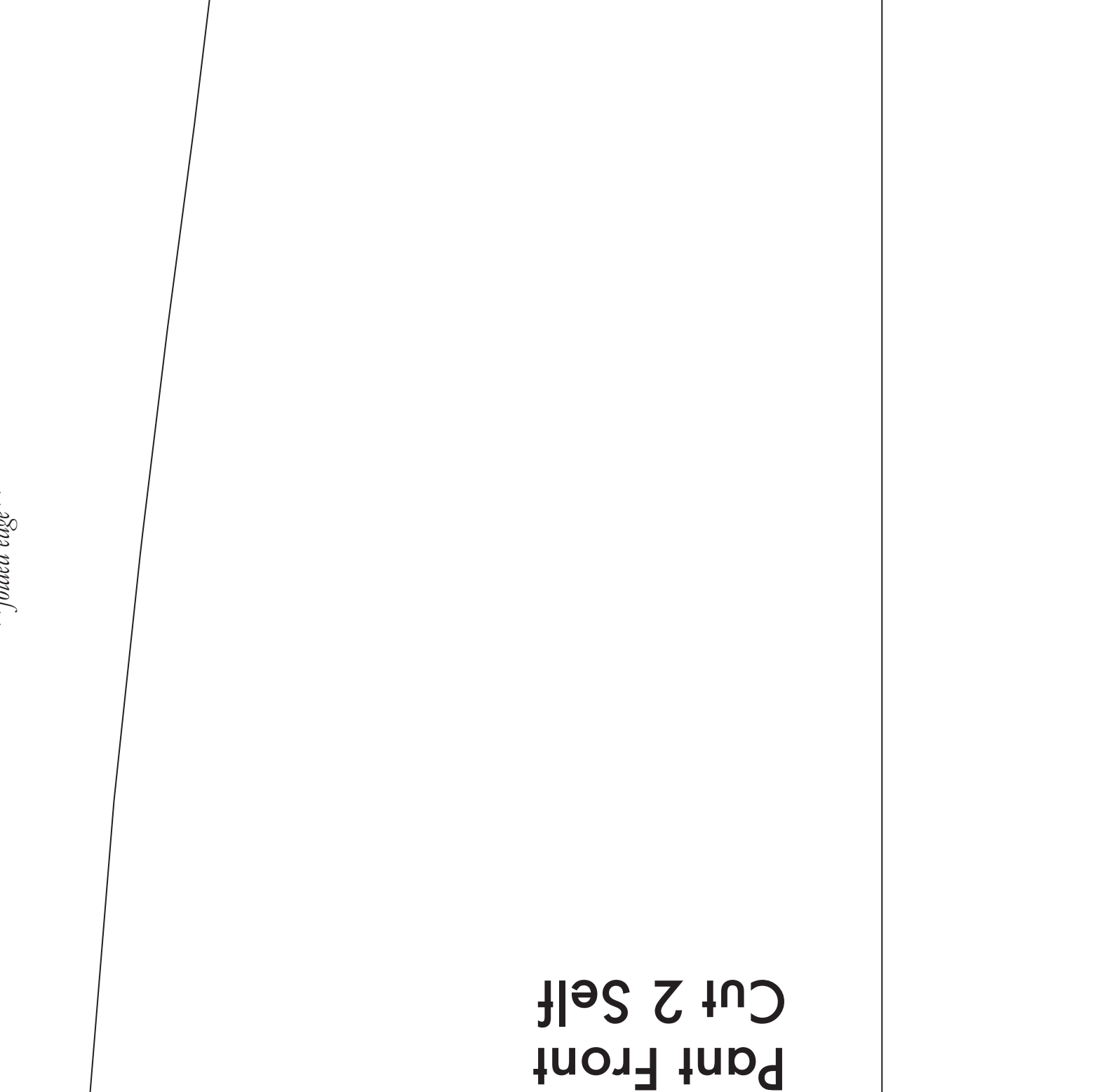
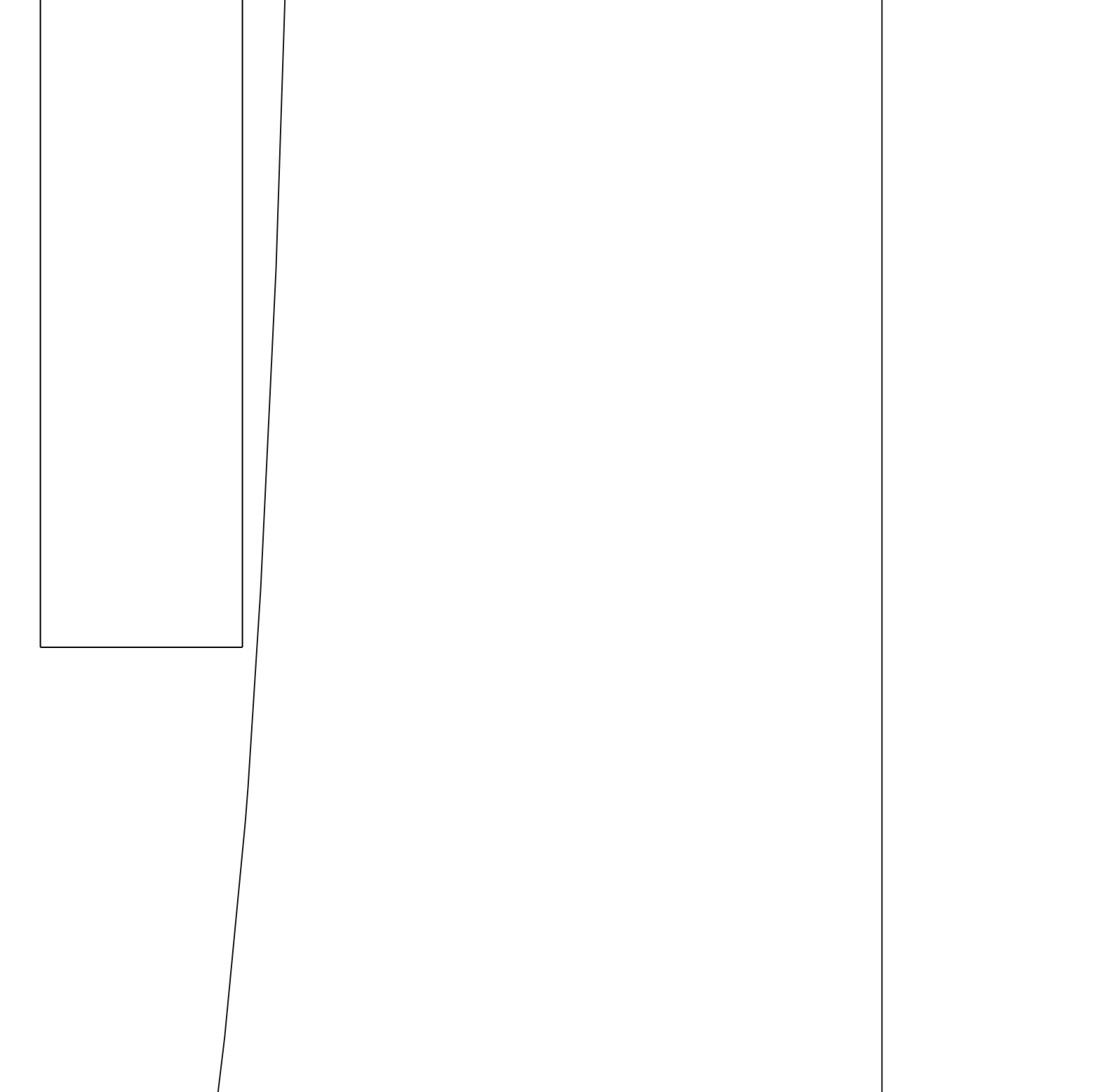
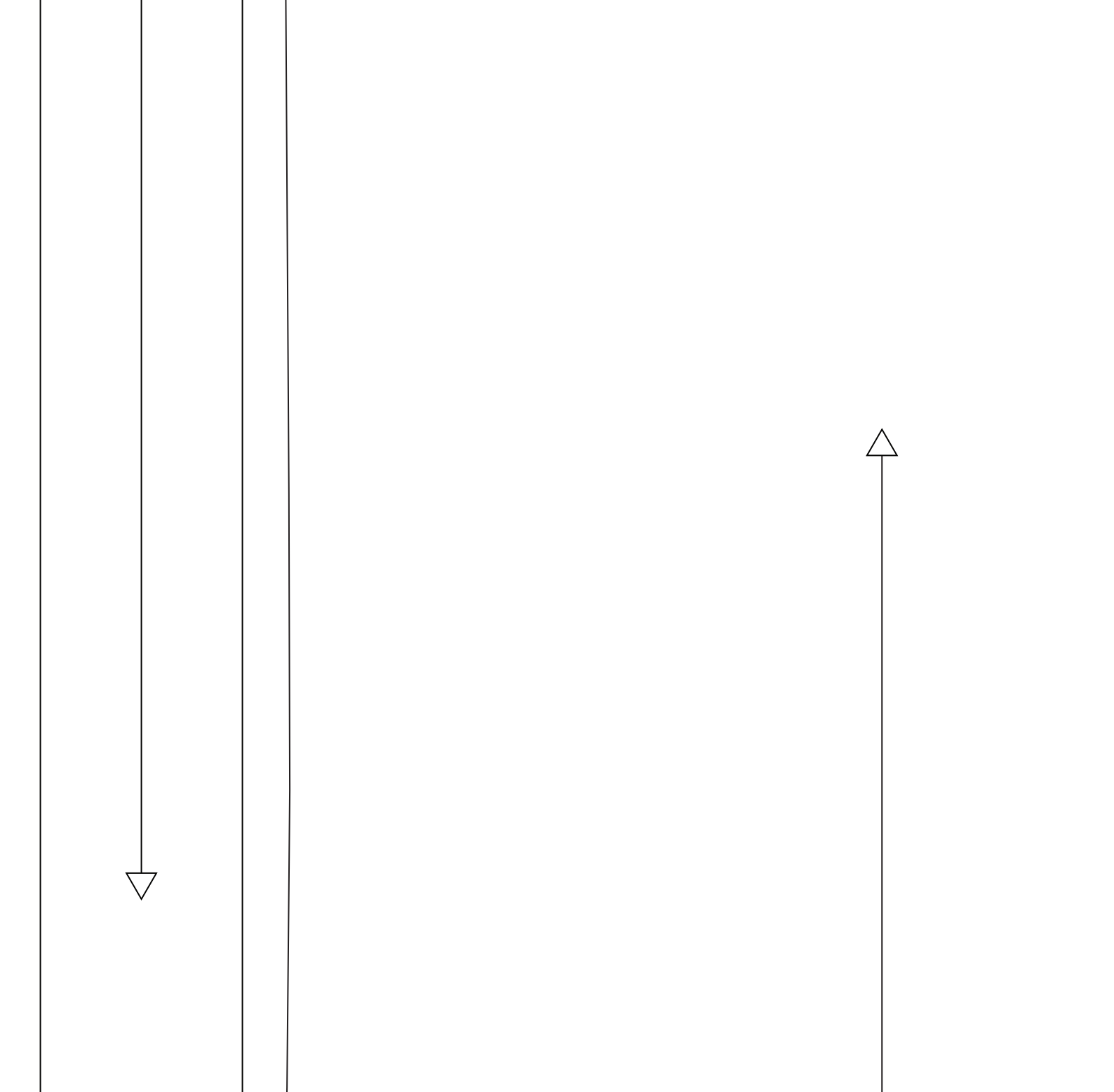
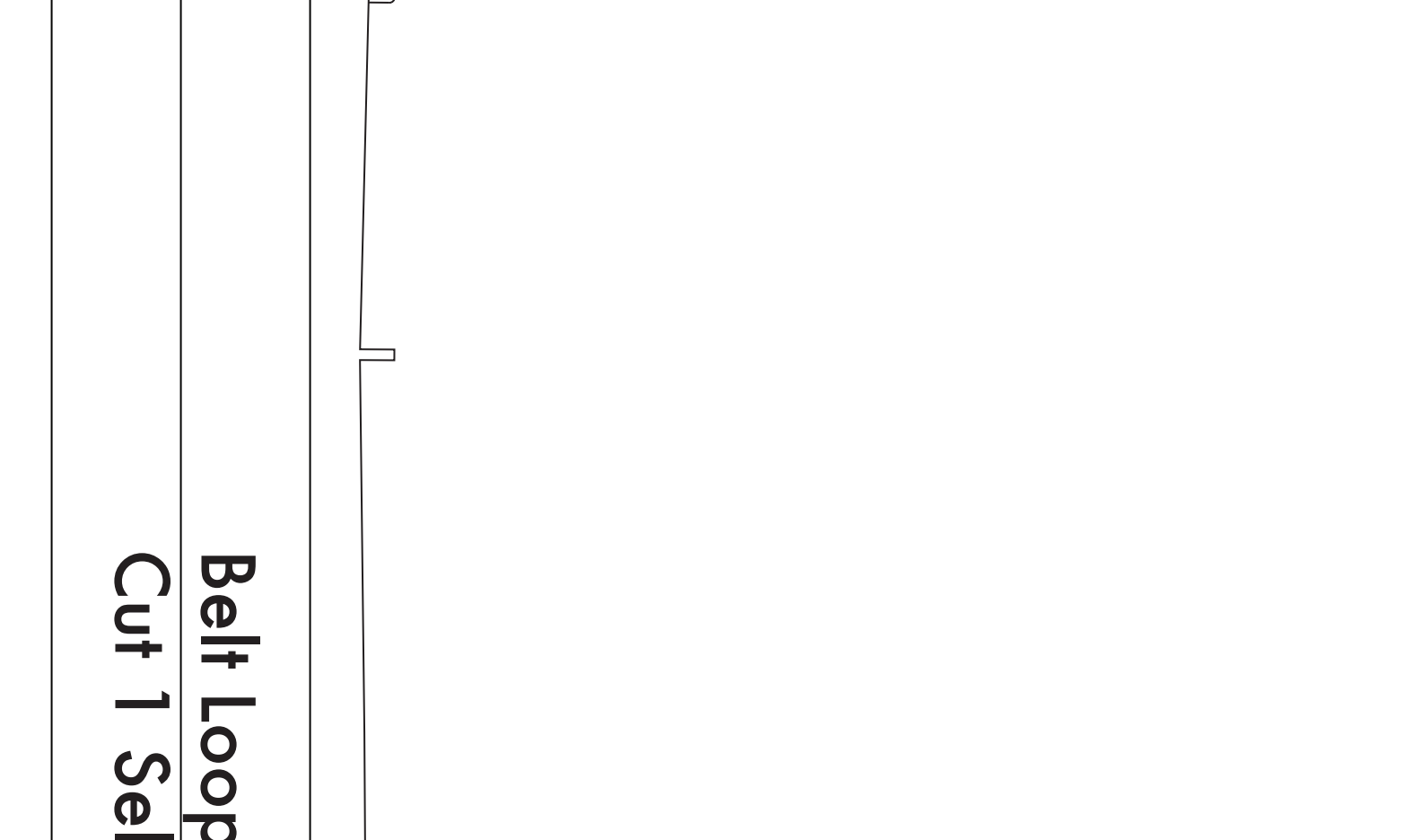
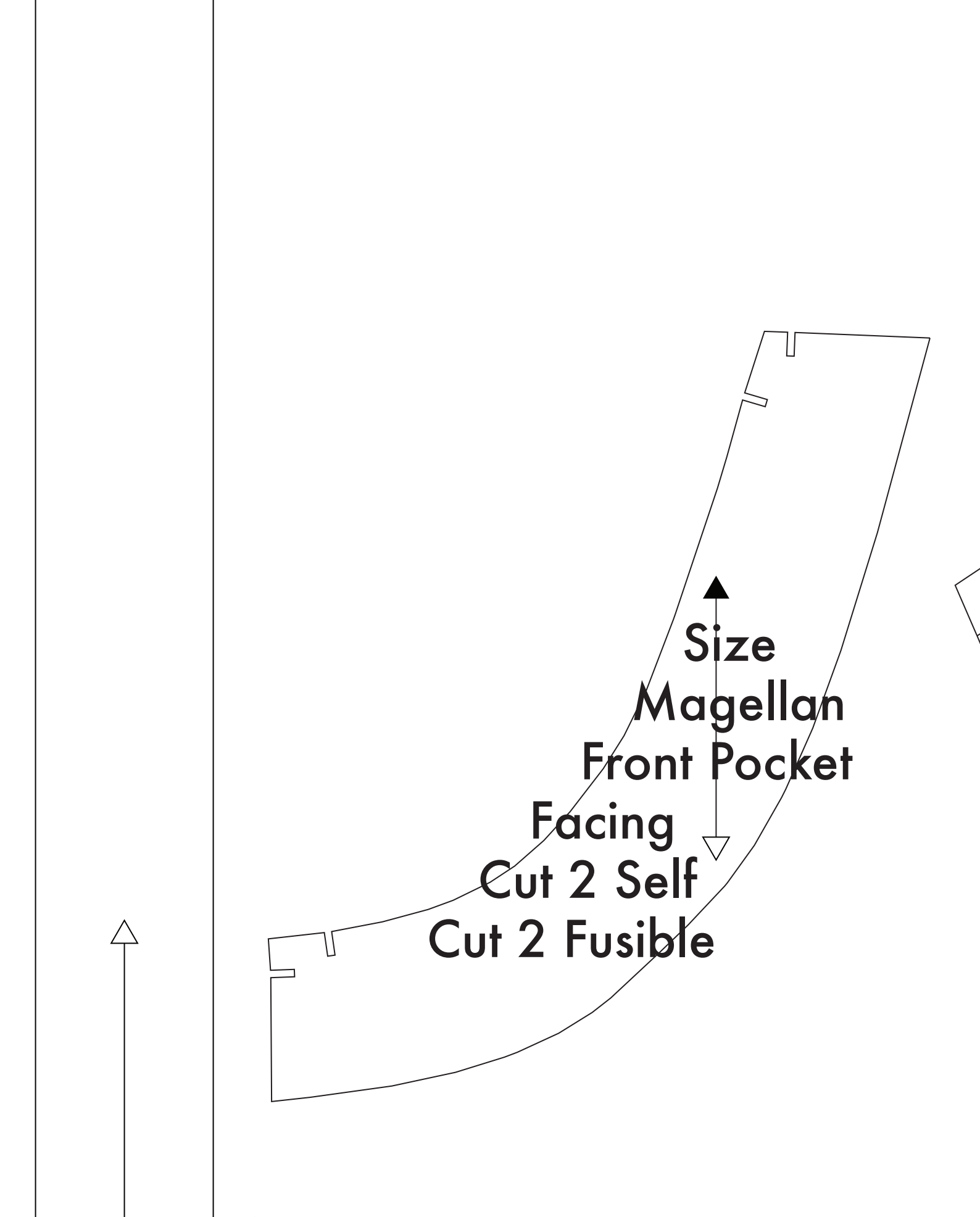
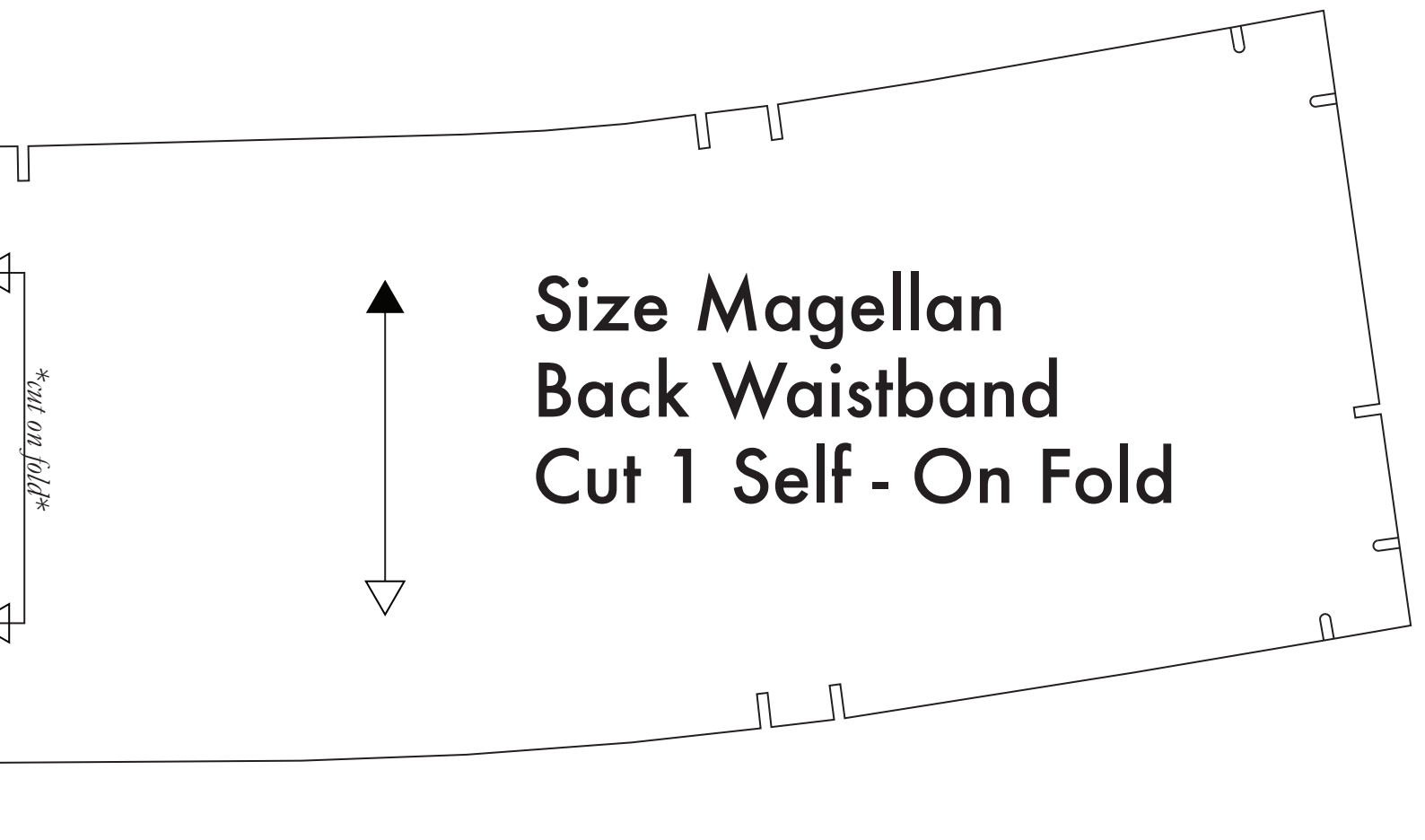
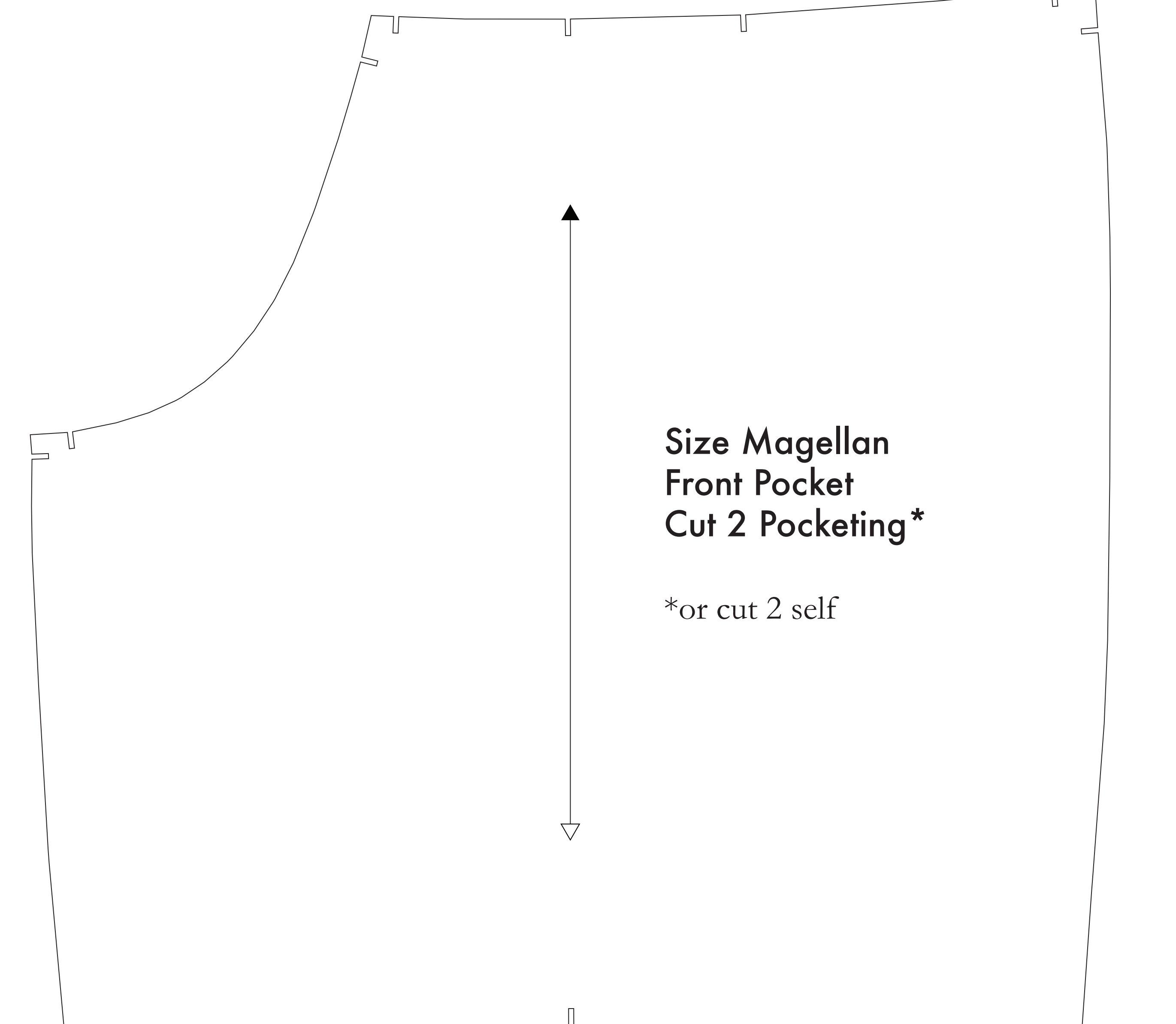
NOTE A: FABRIC LESS THAN 34" WIDE
If your fabric is less than 34" wide you will need to use only one side of the pattern. The paper template will remain the same. The pieces are printed on one side of the paper. The paper template and pattern are of standard size paper for use on one side of the fabric. These two pieces are printed on one side of the paper. These two pieces are printed on one side of the paper. These two pieces are printed on one side of the paper.

NOTE B: FABRIC WITH NAP OR DIRECTIONAL PATTERN
For fabric with a nap, such as velvet or tulle, or fabric with a clear directional print, use only one side of the pattern. The paper template will remain the same. The pieces are printed on one side of the paper. The paper template and pattern are of standard size paper for use on one side of the fabric. These two pieces are printed on one side of the paper. These two pieces are printed on one side of the paper.

NOTE C: USING FUSIBLE INTERFACING
Fusible interfacing is used to reinforce the collar, fly, and pocket. While the use of fusible interfacing is optional, the B&B does have recommendations for its use. Please refer to the B&B website for more information on the use of fusible interfacing.

OPTIONAL: Cut fusible interfacing pieces per NOTE C For most adults. Pattern pieces that use fusible will be marked with the direction "Cut 2 Fusible" or "Cut 1 Fusible". These pieces are: the Collar, Fly, Fly Facing, Front Pocket Facing, and Front Pocket Backing. For the fusible, lay the material down with the fabric side facing up then place your pattern down and cut around the perimeter of each piece and notch.

For the Front Pocket Bag cut a 4" higher pocketing material. If you are not using a pocketing material, then the Front Pocket Bag may be cut alongside your other pattern pieces. Pocketing is used to make bulk in case of thicker material - for an example of pocketing on any pair of blue jeans.



Before cutting your fabric measure this square to make sure that the pattern is scaled correctly.*

*Some printers and software will automatically scale large scale images which will affect the fit.

The inner square should measure 4" x 4"

The outer square should measure 12cm x 12cm