



JUMPSUIT CUTTING INSTRUCTIONS
DOCUMENT: JCS-JUMPSUIT-CUTTING-INSTRUCTIONS.V1.0
WWW.JUMPSUIT.IT

- SUPPLIES NEEDED**
- 2 YARDS OF 54" WIDE FABRIC
 - SHARP SCISSORS
 - REMOVABLE MARKING MEDIUM (chalk, wax, tailor's rock, etc.)
 - 1/2" 26" NON-SEPARATING ZIPPER
 - THREAD
 - SEWING MACHINE
- OPTIONAL**
- 1/2 YARD OF THINNER POCKET FABRIC
 - FUSIBLE INTERFACING

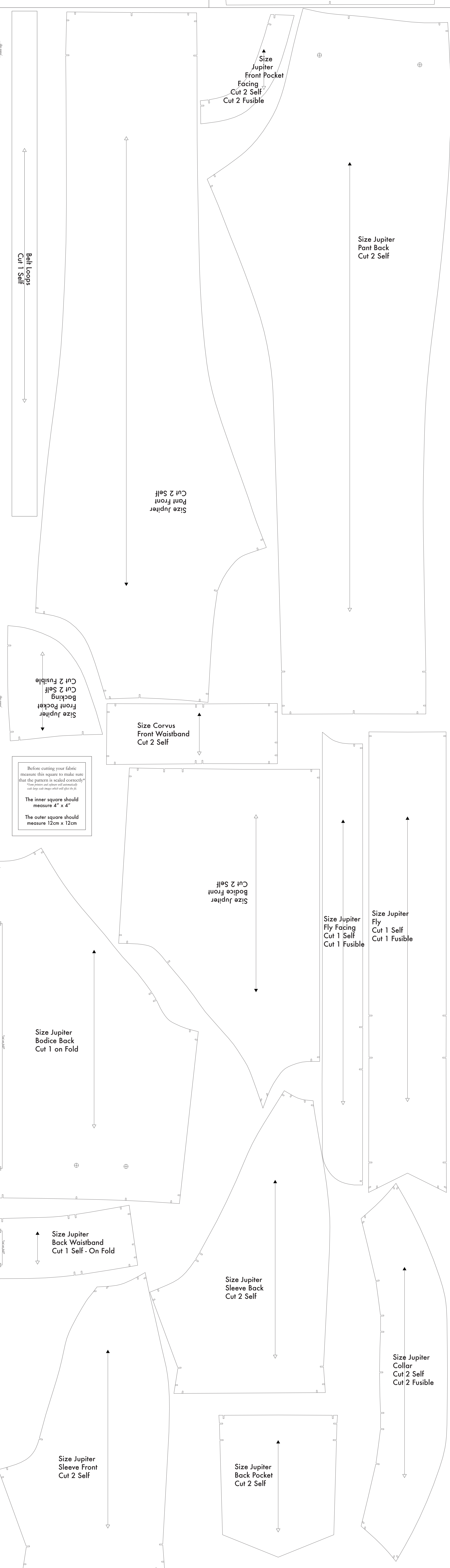
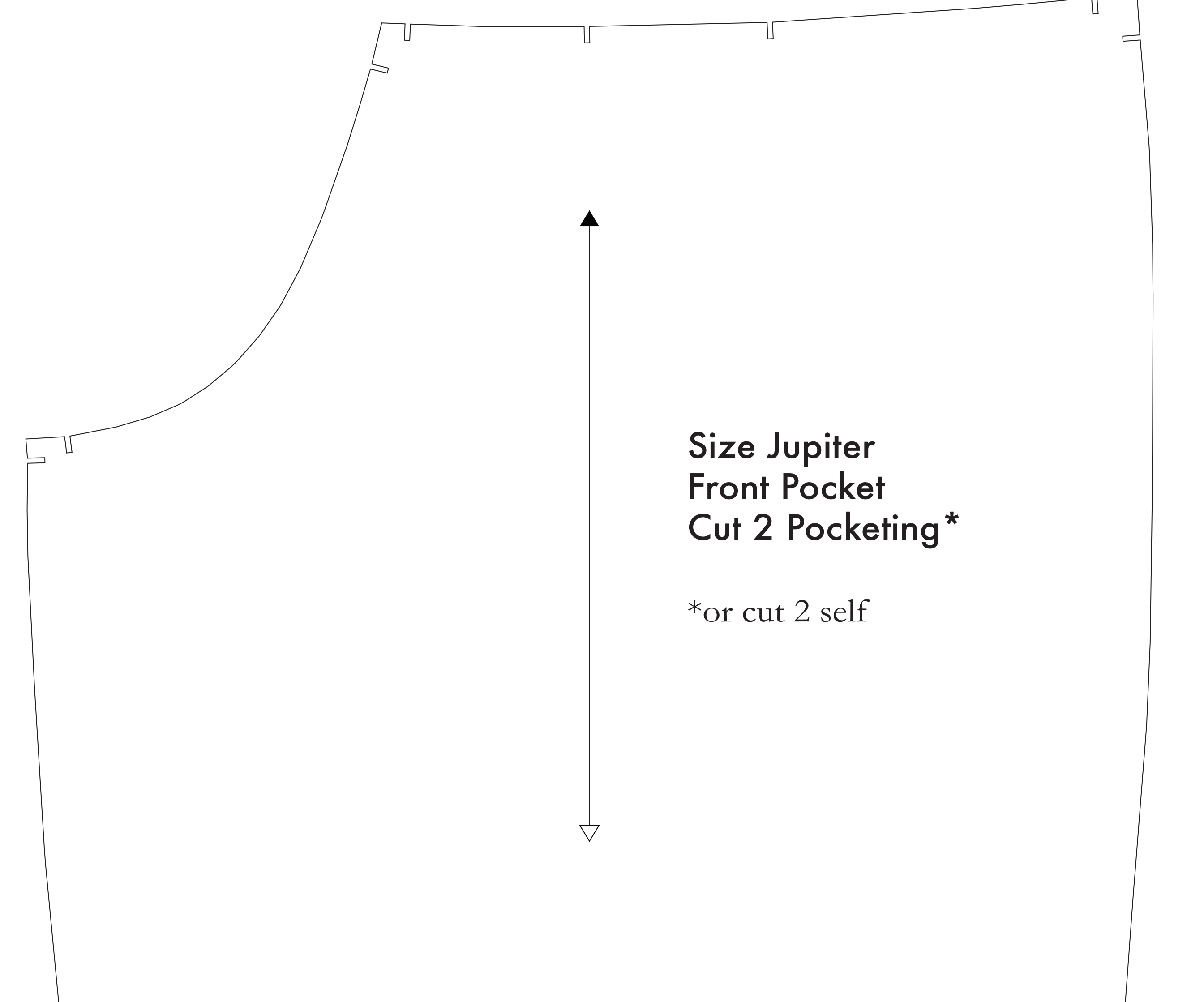
CUTTING INSTRUCTIONS

1. Print pattern. You can print this document (black on white) on sheets of standard size paper and tape the pieces together, or print on a wide-format printer (36" or wider). Print sheets offer this service for approximately \$12. If available to you, the PDF environment will improve printing.
2. Once your pattern is printed, cut along the contour markings to remove any excess paper. This template should fit exactly on a 54" wide or larger piece of fabric that has been folded in half. If your fabric is less than 54" wide, fold your fabric in half along the lengthwise grain matching shoulder edge to shoulder edge. **NOTE B** For maximum yield this pattern is laid out for fabric that does not have a direction. For fabric with a nap, such as velvet or corduroy or fabric with a clear directional grain - **NOTE B**
3. Fold your fabric in half along the lengthwise grain matching shoulder edge to shoulder edge. Sewage is the self-finished edge of fabric. This narrow border keeps the fabric from unraveling or fraying. Often it has an edge that resembles raw fringe, though just as frequently, a clearly finished line will be found. Avoid this edge in your cut pieces as the texture frequently differs from the main body of the fabric.
4. Place the paper template on top your fabric, matching the folded edge of the fabric with the side of the paper marked "Folded Edge".
5. Place pins throughout the template pinning together both layers of fabric as well as the paper.
6. Cut around the perimeter of each piece.
7. Leaving the pins in place, you will need to stop each of the notches, taking care to not stop beyond the end of the 1/4" depth.

NOTE A: FABRIC LESS THAN 54" WIDE
If your fabric is less than 54" wide, you will need to cut with extreme care. Individually trace the paper markings and create a border on your fabric (fabric you've pinned to the pattern piece) on the other side of the fabric. This border will be the edge of your fabric. To find the precise markings and find the right line, use your pattern paper and these lines indicate the direction, or grain, of the fabric. These markings are on your fabric, they are not on the paper. This narrow border keeps the fabric from unraveling or fraying. Often it has an edge that resembles raw fringe, though just as frequently, a clearly finished line will be found. Avoid this edge in your cut pieces as the texture frequently differs from the main body of the fabric.

NOTE B: FABRIC WITH NAP OR DIRECTIONAL PATTERN
Cut fabric with a nap, such as velvet or corduroy, fabric with a clear directional grain, or fabric with a pattern that has a direction. These markings are on your fabric, they are not on the paper. This narrow border keeps the fabric from unraveling or fraying. Often it has an edge that resembles raw fringe, though just as frequently, a clearly finished line will be found. Avoid this edge in your cut pieces as the texture frequently differs from the main body of the fabric.

NOTE C: USING FUSIBLE INTERFACING
Fusible interfacing is a material that is used to stabilize, strengthen, and make some pieces in a garment. While the use of fusible interfacing is optional, the Recommended Fusible Interfacing is high to include with all patterns and is not fusible interfacing as the Return of JUMPSUIT.



Before cutting your fabric measure this square to make sure that the pattern is scaled correctly*
**not printed to scale, use large paper and adjust as needed*

The inner square should measure 4" x 4"

The outer square should measure 12cm x 12cm