

- SUPPLIES NEEDED**
- 1 1/2 YARDS OF 54" WIDE FABRIC
 - SHARP SCISSORS
 - REMOVABLE MARKING MEDIUM (chalk, wax, tailor's lock, etc.)
 - 1" - 2" NON-SEPARATING ZIPPER
 - THREAD
 - SEWING MACHINE
- OPTIONAL:**
- 1/2 YARD OF THINNER POCKET FABRIC
 - FUSIBLE INTERFACING

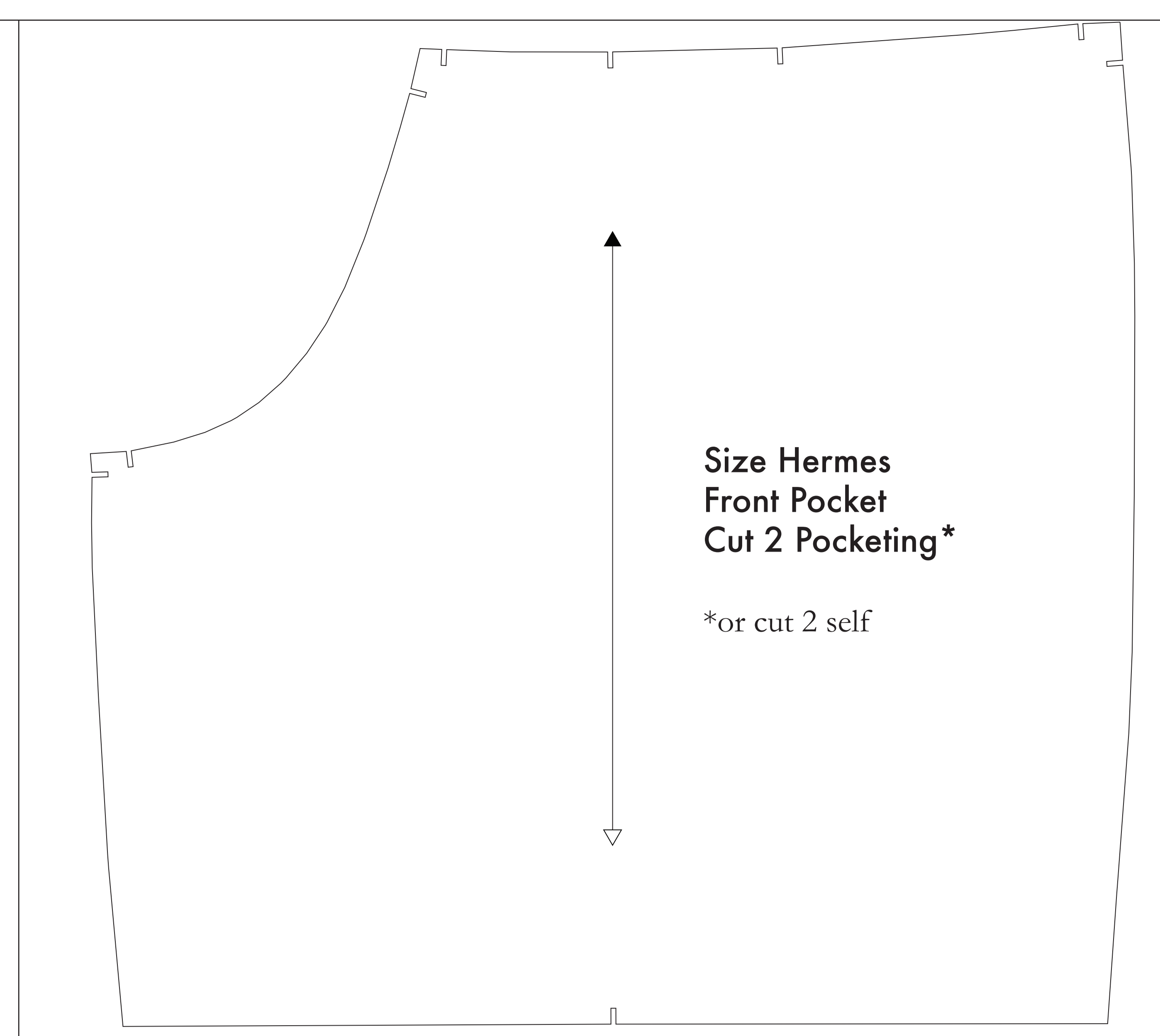
CUTTING INSTRUCTIONS

- Print pattern. You may print this document tiled on sheets of standard size paper and tape the pieces together, or print on a wide format printer (36" or wider). Print sheets offer this service for approximately \$12. If available to you, the BDX recommended wide format printing.
- Once your pattern is printed, cut along the outermost rectangle to remove any excess paper. This template should be roughly one 1/4" wide or larger piece of fabric that has been folded in half. If your fabric is less than 54" wide use **NOTE A**. For maximum fold the pattern is laid out for fabric that does not have a direction. For fabric with a grain, such as velvet or corduroy or fabric with a clear directional grain use **NOTE B**.
- Hold your fabric in half along the lengthwise grain matching selvage edge to selvage edge. Sewedge in the self-finished edge of fabric. This same border keeps the fabric from unraveling or fraying. When a line or edge that resembles two fringes, though not as frequently, a clearly finished line will be found. Avoid this edge in your cut pieces as the texture frequently differs from the main body of the fabric.
- Place the paper template on top your fabric, matching the folded edge of the fabric with the side of the paper marked "folded edge".
- Place pins throughout the template pinning together both layers of fabric as well as the paper.
- For around the perimeter of each piece.
- Leaving the pin in place, you will next need to snip each of the notches, taking care to not snip beyond the end of the 1/4" gap.
- Mark on the 1/4" shaped markings that are found throughout the pattern. Some make marks over adhesive media, while others will not pin. Use your pattern pieces with care.
- Mark all corner notches, or markings, or notches by following guide. They will be used on the Fly, Back, Back Band, and all your pattern pieces that are not on the Back Band.
- NOTES:** Fusible interfacing pieces (see **NOTE C** for more info). Pattern pieces that use fusible will be marked with the direction "Cut 2 Fusible" or "Cut 1 Fusible". These pieces are the Collar, Fly, Fly Facing, Front Pocket Facing, and Front Pocket Backing. To use the fusible, by the material down with the blue side facing up. Place your pattern pieces down and cut around the perimeter of each piece and notch.
- For the Front Pocket Bag cut a lighter weight material. If you are not using a pocketing material, then the Front Pocket Bag may be cut through your other pattern piece. Making a small notch in case of darker material. - You will find an example of pocketing on any pair of the pants.

NOTE A: FABRIC LESS THAN 54" WIDE
 If your fabric is less than 54" wide you will need to cut each pattern piece individually from the paper template and piece pieces on your fabric using care to position the pattern pieces on the fabric in a straight line. The specific measurements on all pattern pieces are marked on each pattern piece for ease of use. To find the pattern measurement, look for the length with the grain arrow, or the fabric. When marking a piece on your fabric, first have the fabric folded in half with the right side of your fabric facing down. To ensure that the pattern pieces are placed correctly, the distance between the pattern piece and the edge of the fabric, you should have the fabric folded with the right side of your fabric facing down. When the pattern pieces are marked from the right side of the fabric, then the pattern pieces are correctly placed.

NOTE B: FABRIC WITH NAIP OR DIRECTIONAL PATTERN
 If your fabric has a directional pattern, such as corduroy, after with a clear directional grain, or for marking, refer to the pattern pieces for the length with the grain arrow, or the fabric. When marking a piece on your fabric, first have the fabric folded in half with the right side of your fabric facing down. To ensure that the pattern pieces are placed correctly, the distance between the pattern piece and the edge of the fabric, you should have the fabric folded with the right side of your fabric facing down. When the pattern pieces are marked from the right side of the fabric, then the pattern pieces are correctly placed.

NOTE C: USING FUSIBLE INTERFACING
 Fusible interfacing is provided for the neck, waist, and pockets. While the use of fusible interfacing is optional, the Back of the Neck pieces, waistband, and pockets are marked with the direction "Cut 2 Fusible" or "Cut 1 Fusible". To use the fusible, by the material down with the blue side facing up. Place your pattern pieces down and cut around the perimeter of each piece and notch.



Before cutting your fabric measure this square to make sure that the pattern is scaled correctly*
 *Some printers and printers will affect the fit.
 The inner square should measure 4" x 4"
 The outer square should measure 12cm x 12cm

