


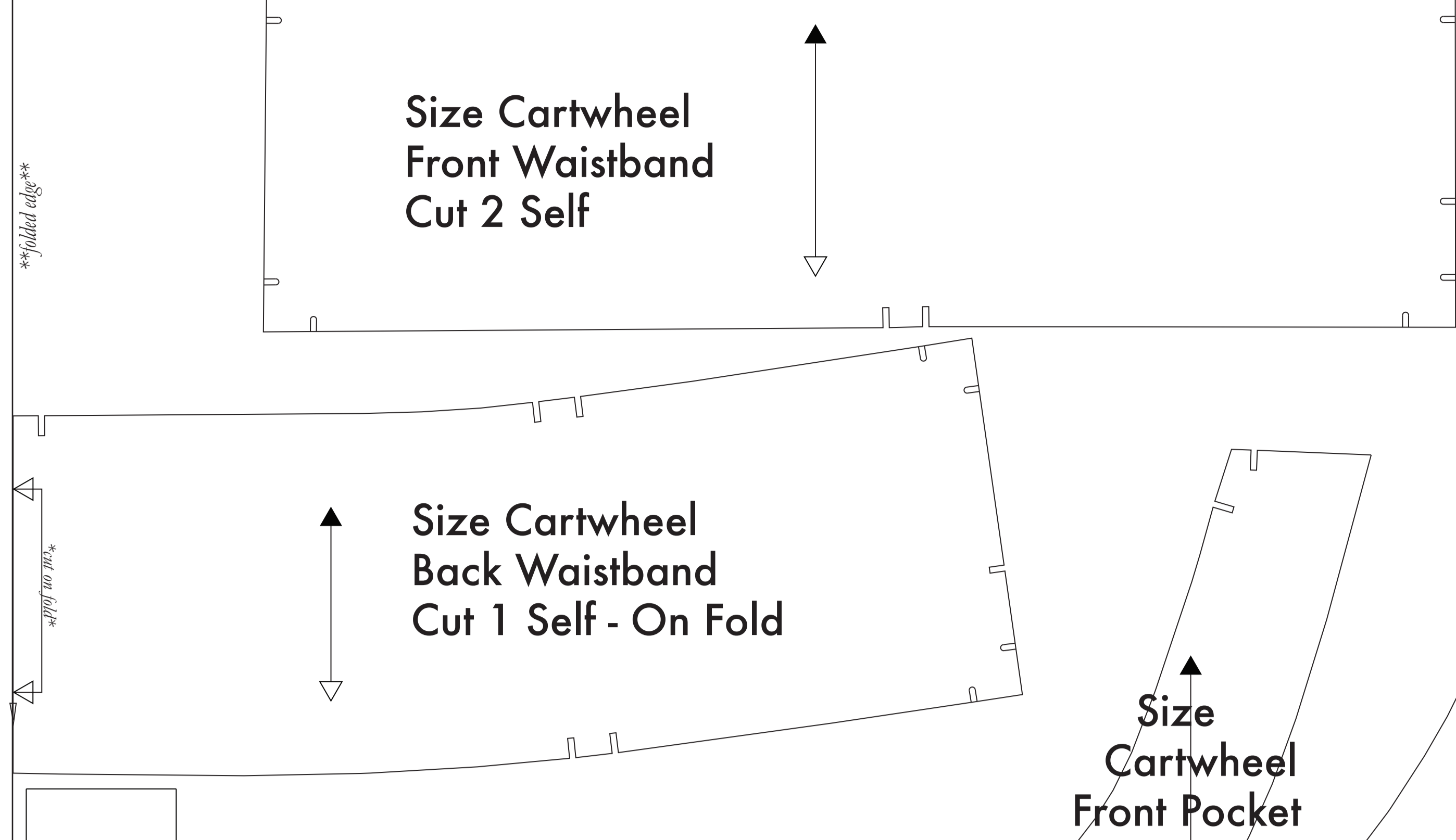
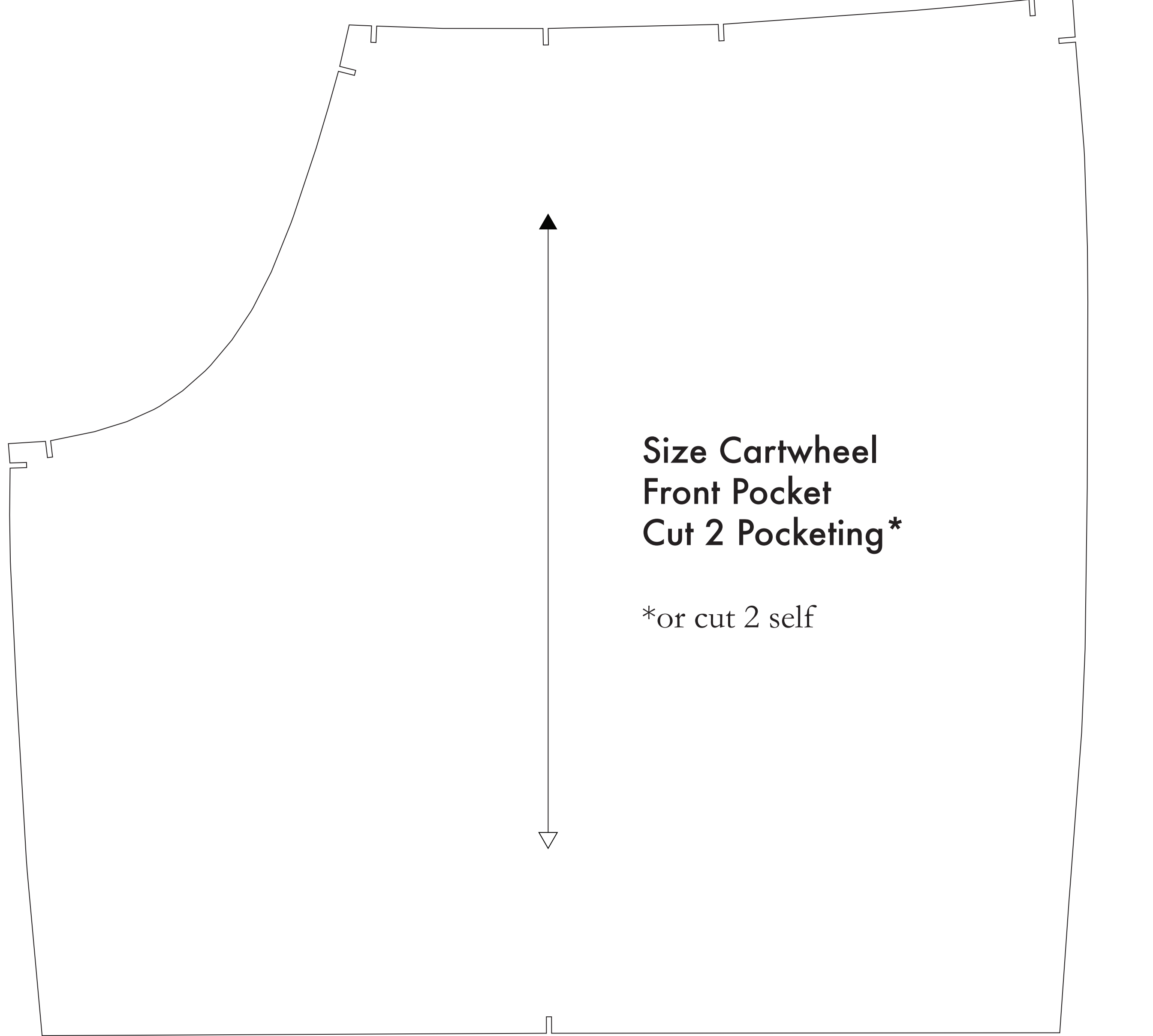
- SUPPLIES NEEDED**
- 1/2 YARD OF 54" WIDE FABRIC
 - SHARP SCISSORS
 - REMOVABLE MARKING MEDIUM (chalk, wax, tailor's task, etc.)
 - 1 - 28" NON-SEPARATING ZIPPER
 - THREAD
 - SEWING MACHINE
- OPTIONAL:**
- 1/2 YARD OF THINNER POCKET FABRIC
 - FUSIBLE INTERFACING

- CUTTING INSTRUCTIONS**
- Print pattern. You can print this document tiled on sheets of standard size paper and tape the pieces together, or print on a wide-format printer (36" or wider). Print sheets of this pattern (see approximate SIZ). If available to you, the PDF recommends wide-format printing.
 - Trace your pattern to paper, cut along the outermost rectangle to remove any excess paper. This template should fit exactly on a 54" wide or larger piece of fabric that has been folded in half. If your fabric is less than 54" wide, see **NOTE A**. For ease of use, the pattern is laid out for fabric that does not have a direction. For fabric with a nap, such as velvet or corduroy or fabric with a clear directional grain, see **NOTE B**.
 - Hold your fabric in half along its lengthwise grain matching whichever side is the outside edge. Schedule in the self-finished edge of fabric. This narrow border keeps the fabric from unraveling or fraying. Offer a bias edge that smooths out any fraying as happens in a newly finished hem with finish. Avoid this edge as you cut pieces as the center frequently differs from the main body of the fabric.
 - Place the paper template on top of your fabric, matching the folded edge of the fabric with the side of the paper marked "folded edge."
 - Trace your template onto your fabric, pinning together both layers of fabric as well as the paper.
 - Use your hand to feel the grain of the fabric, making sure you are not stepping beyond the end of the U-shaped.
 - Transfer the paper to your fabric, using a sharp needle to pierce the paper. Some needles make more delicate holes, while others will help you tear the paper along with cutting.
 - Mark all pieces and holes. Using a pin, bring together both layers of fabric and the pattern, mark the center of each hole with a chalk, wax, or other marking medium. A tailor's task may also be used.
 - This inner and outer hole, or marking, are indicated by the following symbol: . This symbol is used on the Front Bodice Back, Back Bodice, and Front Pocket.
 - Remove the paper and you will find a mark on the fabric. **NOTE C** For more info, Pattern pieces that use fusible will be marked with the direction "Cut 1 Fusible" or "Cut 2 Fusible." These pieces are the Collar, Fly, Fly Facing, Front Pocket Facing, and Front Pocket Backing. For the fusible, by the material shown with the glue side facing up, then place your pattern down and cut around the perimeter of each piece and notch.
 - Use the Front Pocket Bag for a lighter pocketing material. If you are not using a pocketing material, then the Front Pocket Bag may be cut straight from your other pattern pieces. Pocketing is used to make look in case of disaster - means - 1 for a bag or a pocket or a part of the ones.

NOTE A: FABRIC LESS THAN 54" WIDE
If your fabric is less than 54" wide, you will need to cut each pattern piece individually from the paper template and create a piece of your fabric that is the same size as the paper template. You will need to cut the paper template into pieces that are the same size as the paper template. You will need to cut the paper template into pieces that are the same size as the paper template. You will need to cut the paper template into pieces that are the same size as the paper template.

NOTE B: FABRIC WITH NAP OR DIRECTIONAL PATTERN
For fabric with a nap, such as velvet or corduroy, take note of the directional grain of the marking paper. Each side of the paper will be marked with a directional arrow. You will need to cut the pattern piece in the same direction as the nap of the fabric. If you are using a directional fabric, you will need to cut the pattern piece in the same direction as the nap of the fabric.

NOTE C: USING FUSIBLE INTERFACING
Fusible interfacing is used to stabilize the pattern pieces. When the use of fusible interfacing is required, the pattern pieces have a directional arrow pointing to the fusible side. You will need to cut the pattern piece in the same direction as the arrow.



Before cutting your fabric measure this square to make sure that the pattern is scaled correctly!
**Some printers and software will automatically scale large scale images which will affect the fit.*

The inner square should measure 4" x 4"
The outer square should measure 12cm x 12cm

