

- SUPPLIES NEEDED**
- 3 1/3 YARDS OF 54" WIDE FABRIC
  - SHARP SCISSORS
  - REMOVABLE MARKING MEDIUM (chalk, wax, tailor's lock, etc.)
  - 1" 24" NON-SEPARATING ZIPPER
  - THREAD
  - SEWING MACHINE
- OPTIONAL:**
- 1 1/2 YARD OF THINNER POCKET FABRIC
  - FUSIBLE INTERFACING

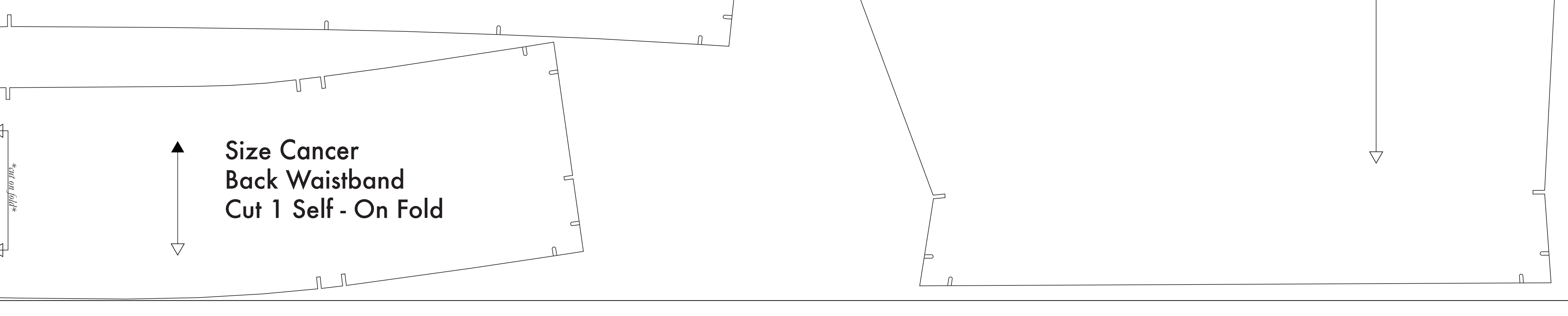
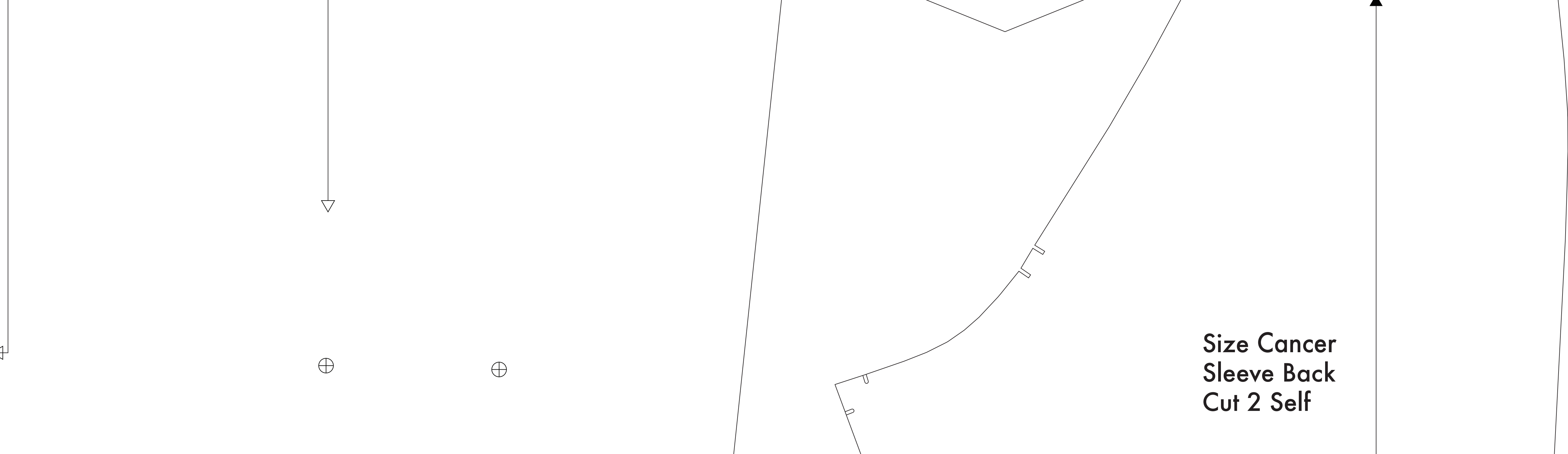
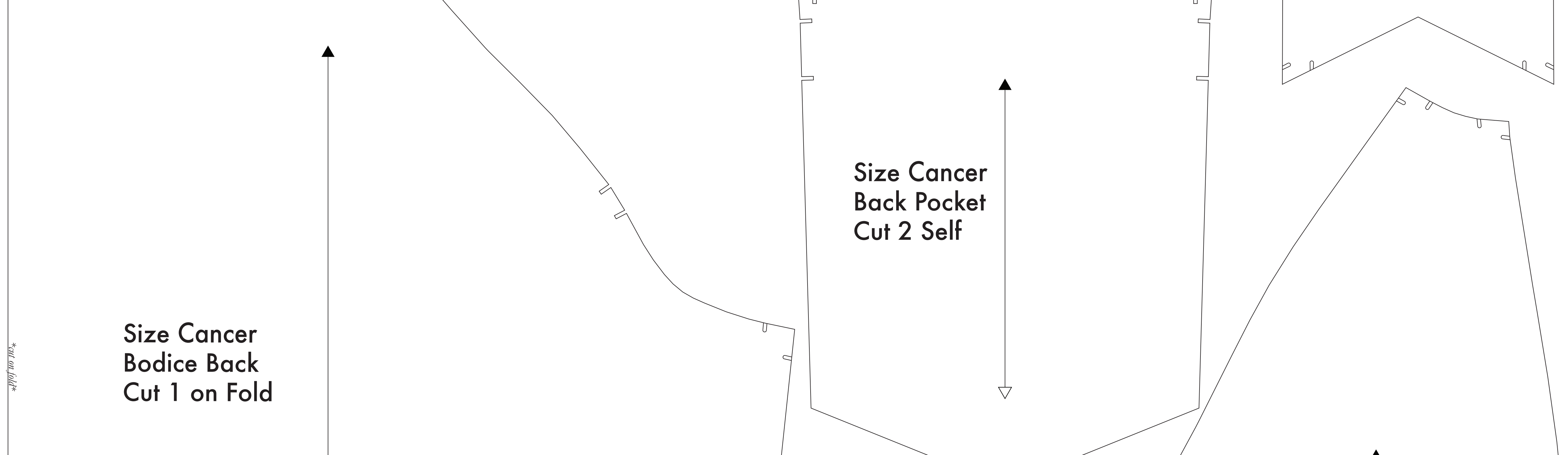
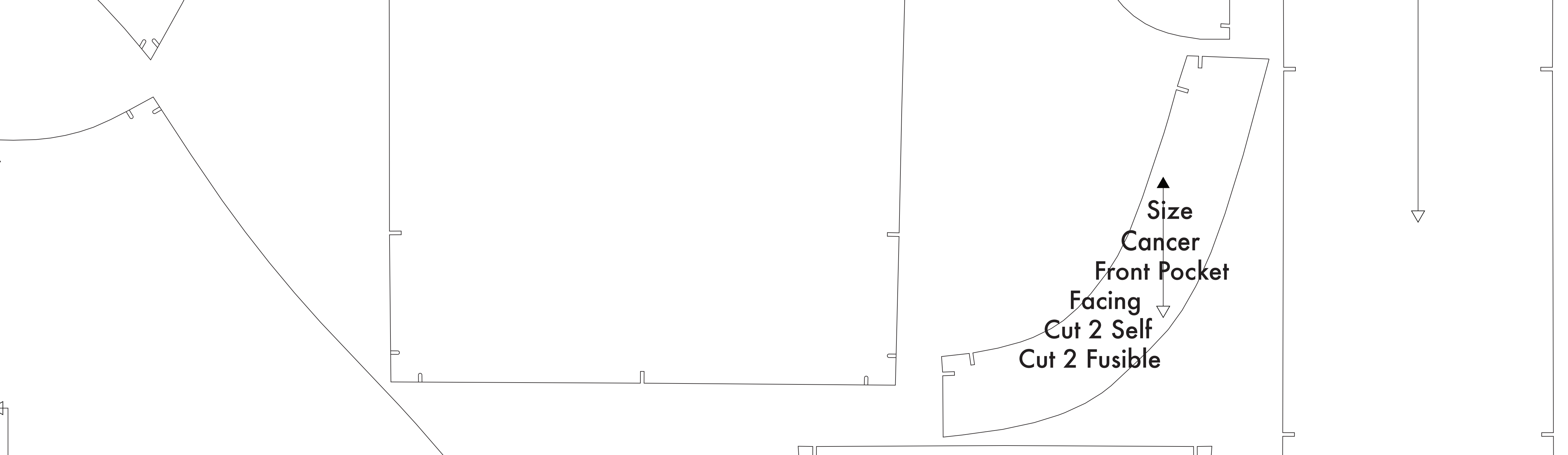
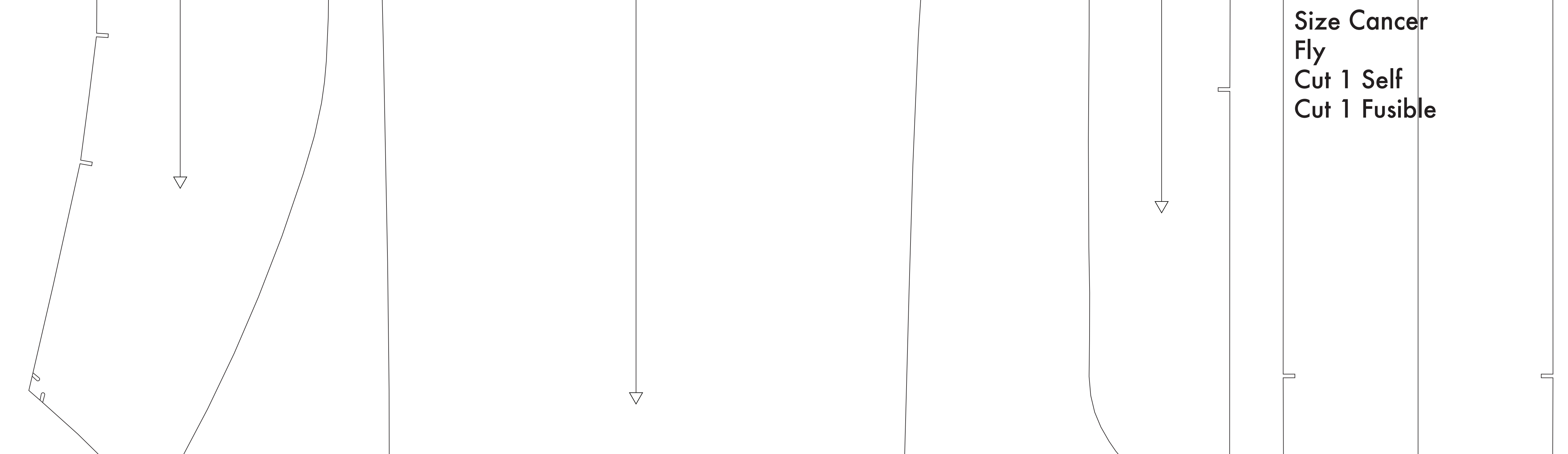
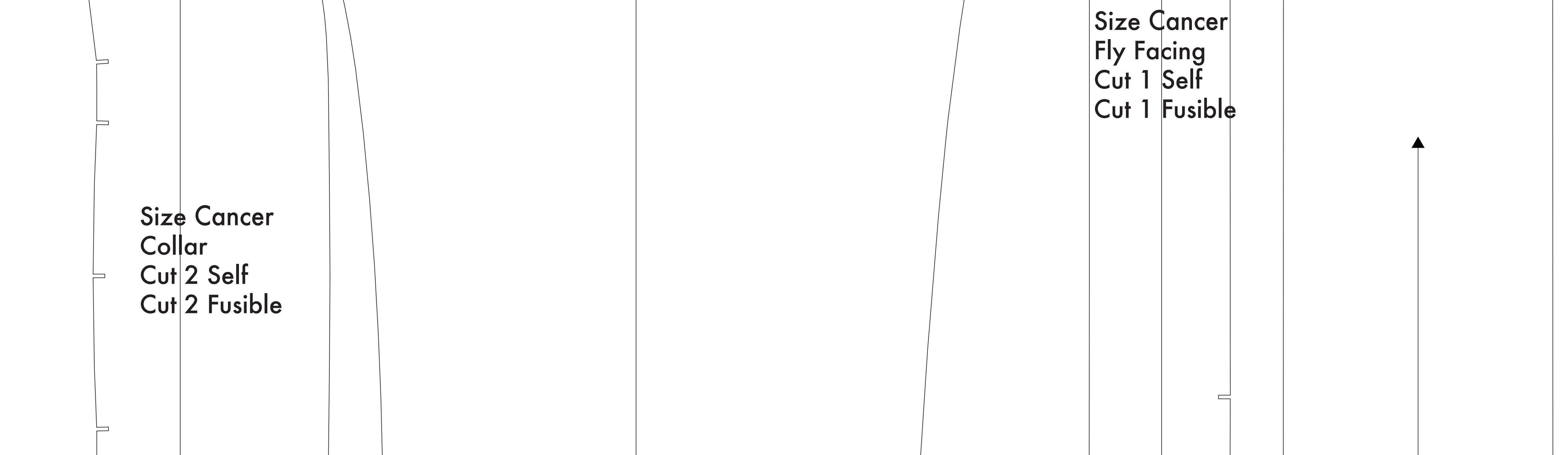
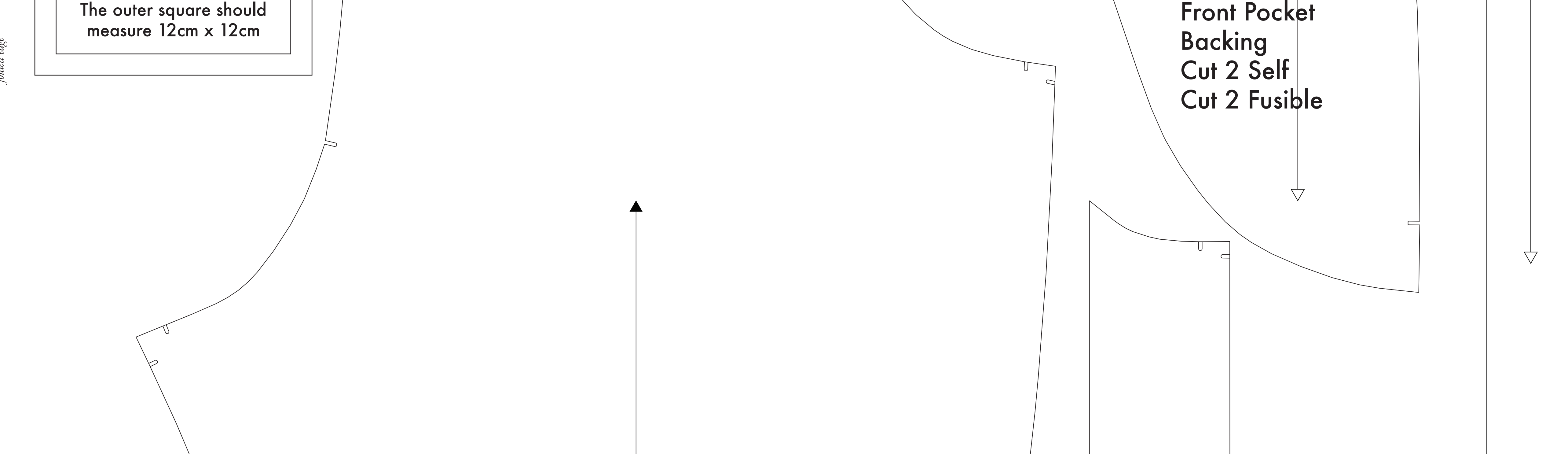
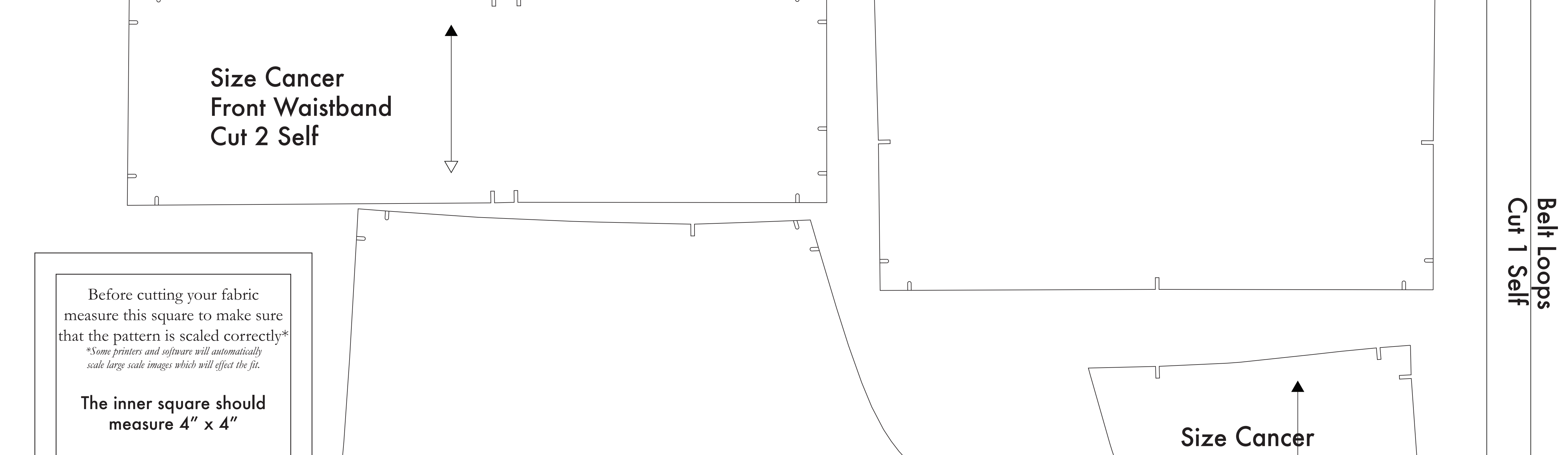
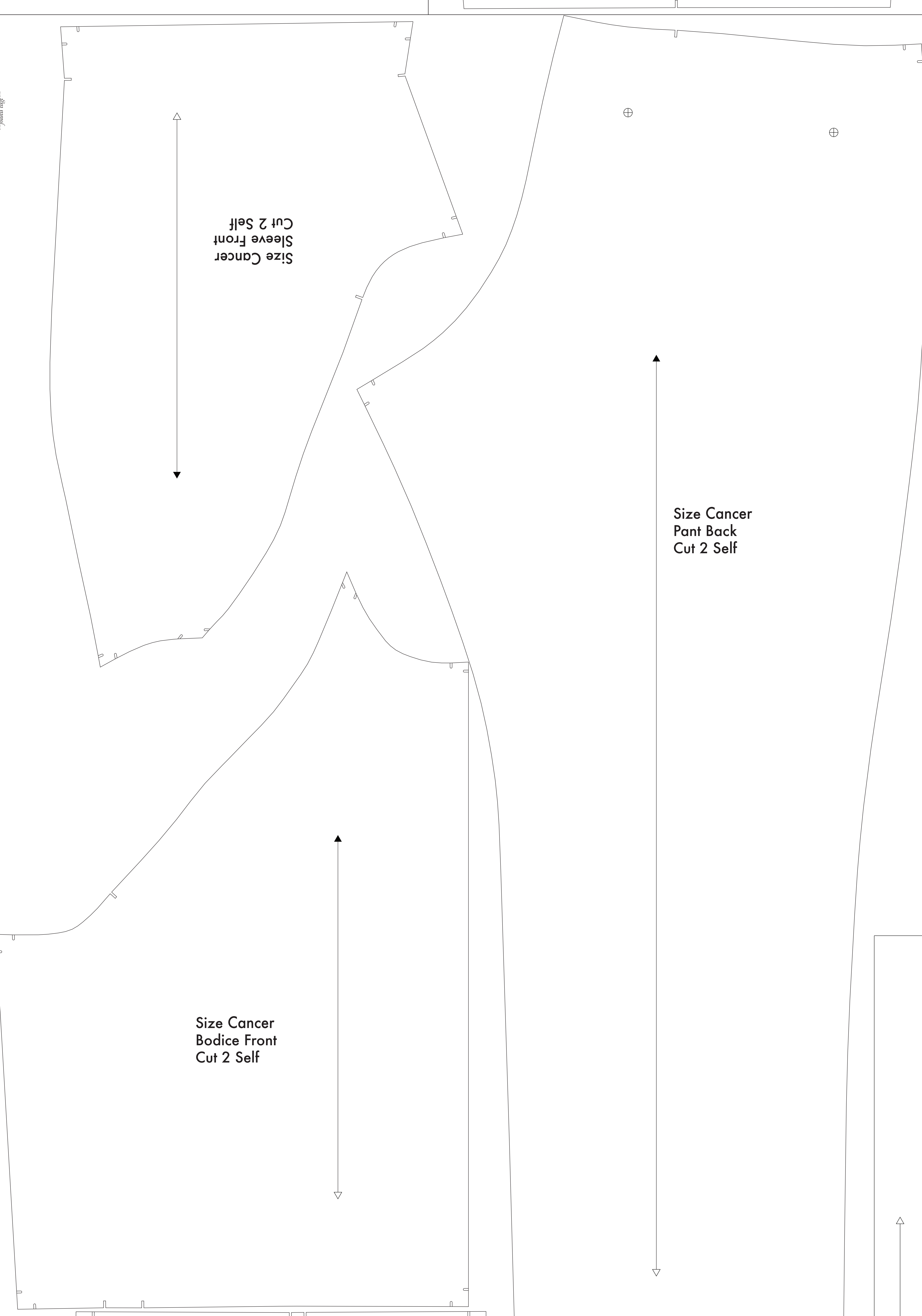
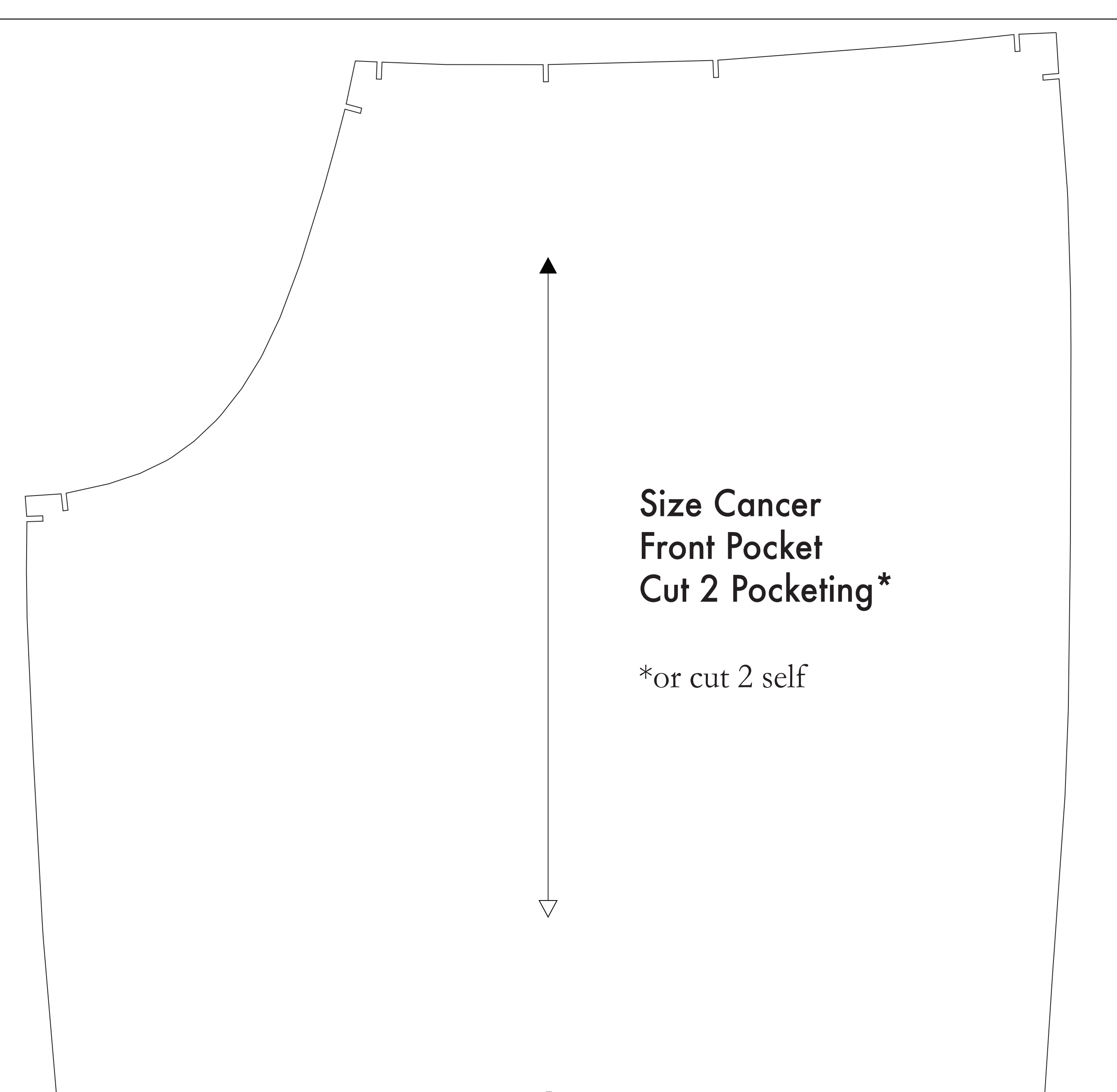
**CUTTING INSTRUCTIONS**

1. Print pattern. You can print this document flat on sheets of standard size paper and tape the pieces together, or print on a wide-format printer (36" or wider). Print sheets offer this service for approximately \$12. If possible, use one of the BPS recommendations when printing.
2. Once your pattern is printed, cut along the outer edge to remove any excess paper. This template should fit on a sheet of 36" wide paper. For larger pieces of fabric, that has been folded in half, fit your fabric to a box that is 34" wide.
3. **NOTE A:** For maximum width, your pattern is laid out flat. Fabric that does not have a crease in the middle will require you to fold along the length to get the pattern to fit. **NOTE B:** For fabrics with a half finished edge (e.g. flared), this pattern is laid out flat. The fabric must be folded in half along the length to get the pattern to fit. **NOTE C:** For fabrics with a half finished edge (e.g. flared), this pattern is laid out flat. The fabric must be folded in half along the length to get the pattern to fit. **NOTE D:** For fabrics with a half finished edge (e.g. flared), this pattern is laid out flat. The fabric must be folded in half along the length to get the pattern to fit.
4. Place the paper template on top of your fabric, matching the folded edge of the fabric with the side of the paper that is marked "folded edge".
5. Place pins throughout the template pinning together both layers of fabric as well as the paper.
6. Use a sharp pair of scissors to cut along the lines, taking care to not skip beyond the end of the 1/4" seam.
7. Leave the pins in place, you will need them to keep each of the pieces, taking care to not skip beyond the end of the 1/4" seam.
8. **NOTE E:** Before cutting your fabric, make sure that the pattern is scaled correctly. The inner square should measure 4" x 4". The outer square should measure 12cm x 12cm.

**NOTE A: FABRICS LESS THAN 54" WIDE**  
If you are using fabric less than 54" wide, you will need to cut each piece twice. Fold the fabric in half lengthwise and use a line or two lines along the cut to ensure the pattern piece is centered. For fabrics wider than 54", you will need to cut each piece once. The pattern piece will be centered on the fabric.

**NOTE B: FABRICS WITH NAP OR DIRECTIONAL PATTERN**  
For fabrics with a nap, such as velvet or corduroy, take care to cut the pattern pieces with the nap in mind. The nap should run in the same direction for all pieces. For fabrics with a directional pattern, such as a plaid or check, take care to cut the pattern pieces with the pattern in mind. The pattern should run in the same direction for all pieces.

**NOTE C: USING FUSIBLE INTERFACING**  
Fusible interfacing is a material that is used to reinforce the fabric. It is used to reinforce the neckband, the pocket, and the waistband. It is used to reinforce the fabric in areas that will be subjected to stress. It is used to reinforce the fabric in areas that will be subjected to stress.



Before cutting your fabric measure this square to make sure that the pattern is scaled correctly\*  
\*Some printers and software will automatically scale every scale image which will give the fit.

The inner square should measure 4" x 4"  
The outer square should measure 12cm x 12cm

Belt Loops  
Cut 1 Self