

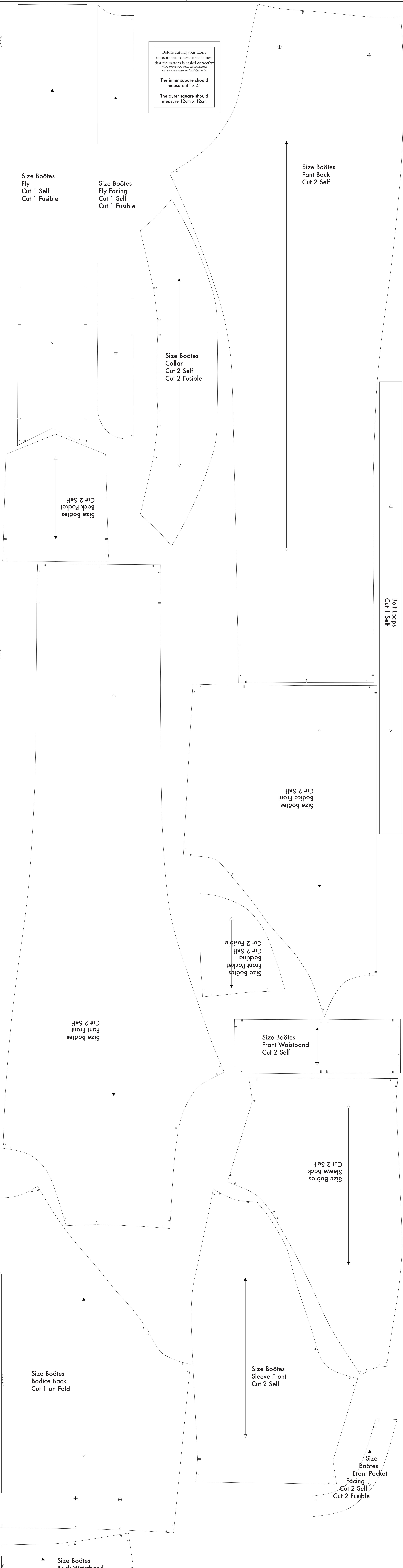
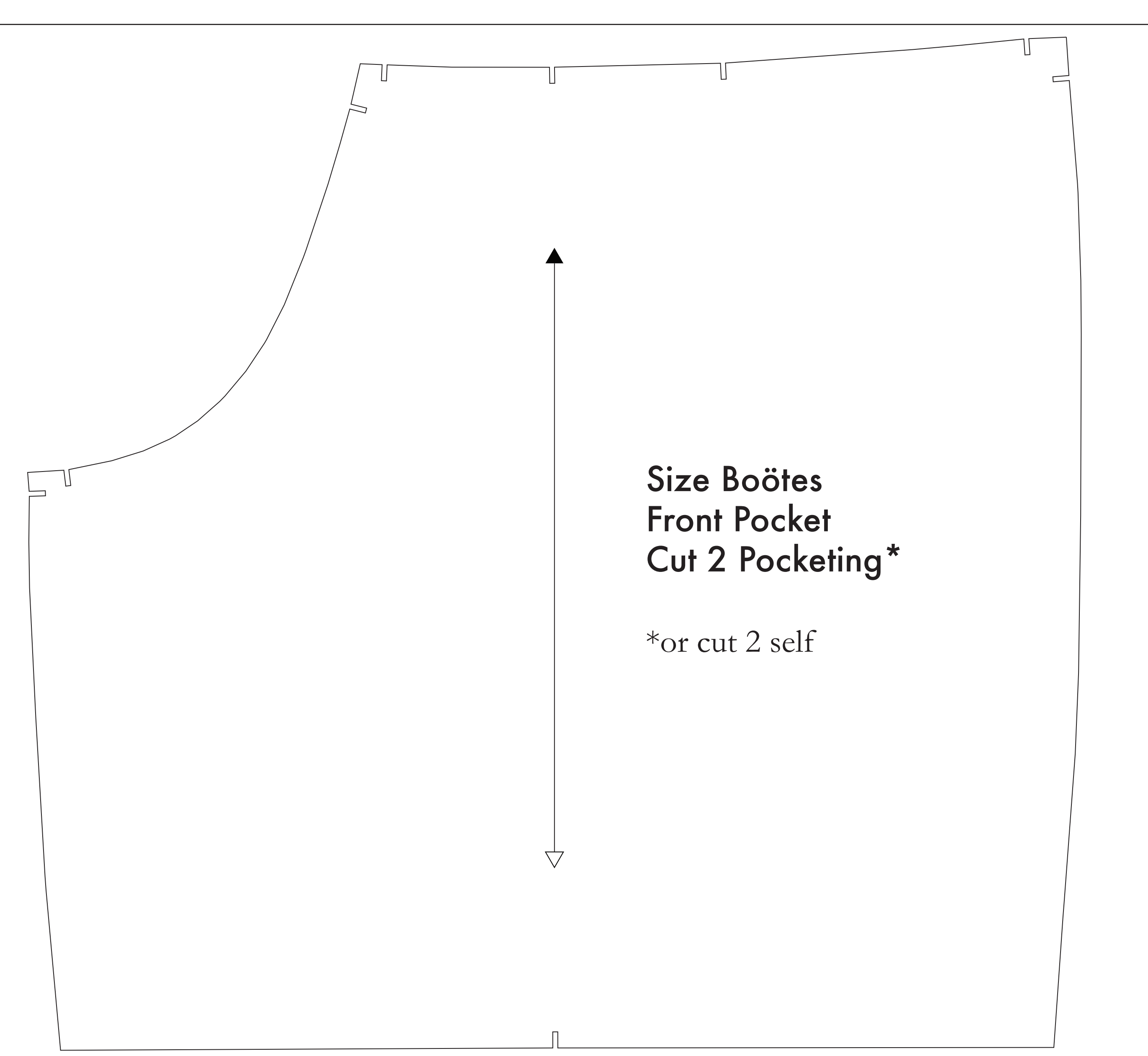
- SUPPLIES NEEDED**
- 1 1/2 YARDS OF 54" WIDE FABRIC
  - SHARP SCISSORS
  - REMOVABLE MARKING MEDIUM (chalk, wax, tailor's tack, etc.)
  - 1 - 24" NON-SEPARATING ZIPPER
  - THREAD
  - SEWING MACHINE (optional)
  - 1/2 YARD OF THINNER FUSIBLE FABRIC
  - FUSIBLE INTERFACING

- CUTTING INSTRUCTIONS**
1. Print pattern. You can print this document and on sheets of standard size paper and tape the pieces together, or print on a wide-format printer (36" or wider). Print sheets after the version (for approximately 512). If available to you, the REPS recommendations will format printing.
  2. Once your pattern is printed, cut along the outermost rectangle to remove any excess paper. This template should fit roughly on a 36" wide or larger piece of fabric that has been folded in half. If your fabric is less than 54" wide, see **NOTE A**. For maximum fold the pattern is laid out for fabric that does not have a direction. For fabric with a nap, such as velvet or corduroy or fabric with a clear directional print see **NOTE B**.
  3. Fold your fabric in half along the lengthwise grain matching selvage edge to selvage edge. Subjoin to the self finished edge of fabric. This narrow border keeps the fabric from stretching or fraying. Often it has an edge that exceeds the seam finish; finish it as a topstitch, a clearly finished line will be found. Avoid this edge in your cut pieces as the texture frequently differs from the main body of the fabric.
  4. Place the paper template on top of your fabric, matching the folded edge of the fabric with the side of the paper marked "folded edge".
  5. Trace over throughout the template pinning together both layers of fabric as well as the paper.
  6. Cut around the perimeter of each piece.
  7. Leaving the piece of fabric, you will need to strip each of the notches, taking care not to strip beyond the end of the "I" shape?
    - Notches are a 1/4" depth marking that are found throughout the pattern.
    - Some notches indicate seam allowances exist, while others will help you line up pattern pieces while sewing.
  8. Mark all minor and fold lines. Using a pin, bring together both layers of fabric and the pattern, mark the corner of each notch to assist in the final construction. Use a ruler's mark to help you mark.
  9. **OPTIONAL:** Cut fusible interfacing pieces. **NOTE C:** For more info. Pattern pieces that use fusible will be marked with the direction "Cut 2 Fusible" or "Cut 1 Fusible". These pieces are: the Collar, Fly, Fly Facing, Front Pocket Facing, and Front Pocket Facing. To cut the fusible, lay the material down with the grain side facing up, then place your pattern down and cut around the perimeter of each piece and notch.
  10. Cut the Front Pocket Facing the cut of a higher pocketing material. If you are not using a pocketing material, then the Front Pocket Bag may be cut alongside your other pattern pieces. *Pocketing is used to make both in case of thicker material - to add an example of padding on any part of the case.*

**NOTE A: FABRIC LESS THAN 54" WIDE**  
 If your fabric is less than 54" wide, you will need to cut out pattern pieces individually from the paper template and piece them together on your fabric. When you piece together the pattern pieces, you will need to use a seam allowance of 1/4" on each side of the pattern pieces. This will ensure that the pieces will fit together properly. For the single row with two rows of notches, you will need to use a seam allowance of 1/4" on each side of the pattern pieces. This will ensure that the pieces will fit together properly. For the double row with two rows of notches, you will need to use a seam allowance of 1/4" on each side of the pattern pieces. This will ensure that the pieces will fit together properly.

**NOTE B: FABRIC WITH NAP OR DIRECTIONAL PATTERN**  
 For fabric with a nap, such as velvet or corduroy, fabric with a clear directional print, or fabric with a directional pattern, you will need to cut out the pattern pieces individually from the paper template and piece them together on your fabric. When you piece together the pattern pieces, you will need to use a seam allowance of 1/4" on each side of the pattern pieces. This will ensure that the pieces will fit together properly. For the single row with two rows of notches, you will need to use a seam allowance of 1/4" on each side of the pattern pieces. This will ensure that the pieces will fit together properly. For the double row with two rows of notches, you will need to use a seam allowance of 1/4" on each side of the pattern pieces. This will ensure that the pieces will fit together properly.

**NOTE C: USING FUSIBLE INTERFACING**  
 Fusible interfacing is a non-woven fabric that is used to provide structure and support to the fabric. It is available in a variety of weights and finishes. When using fusible interfacing, you will need to use a seam allowance of 1/4" on each side of the pattern pieces. This will ensure that the pieces will fit together properly. For the single row with two rows of notches, you will need to use a seam allowance of 1/4" on each side of the pattern pieces. This will ensure that the pieces will fit together properly. For the double row with two rows of notches, you will need to use a seam allowance of 1/4" on each side of the pattern pieces. This will ensure that the pieces will fit together properly.



Before cutting your fabric measure this square to make sure that the pattern is scaled correctly\*  
 \*Some printers and software will automatically scale large image images which will affect the fit.

The inner square should measure 4" x 4"

The outer square should measure 12cm x 12cm