



SUPPLIES NEEDED

- **3 1/2 YARDS OF 54" WIDE FABRIC**
- **SHARP SCISSORS**
- **REMOVABLE MARKING MEDIUM** (chalk, wax, tailor's tuck, etc.)
- **1 - 25" NON-SEPARATING ZIPPER**
- **THREAD**
- **SEWING MACHINE** (optional)
- **1/3 YARD OF THINNER POCKET FABRIC** (optional)
- **FUSIBLE INTERFACING**

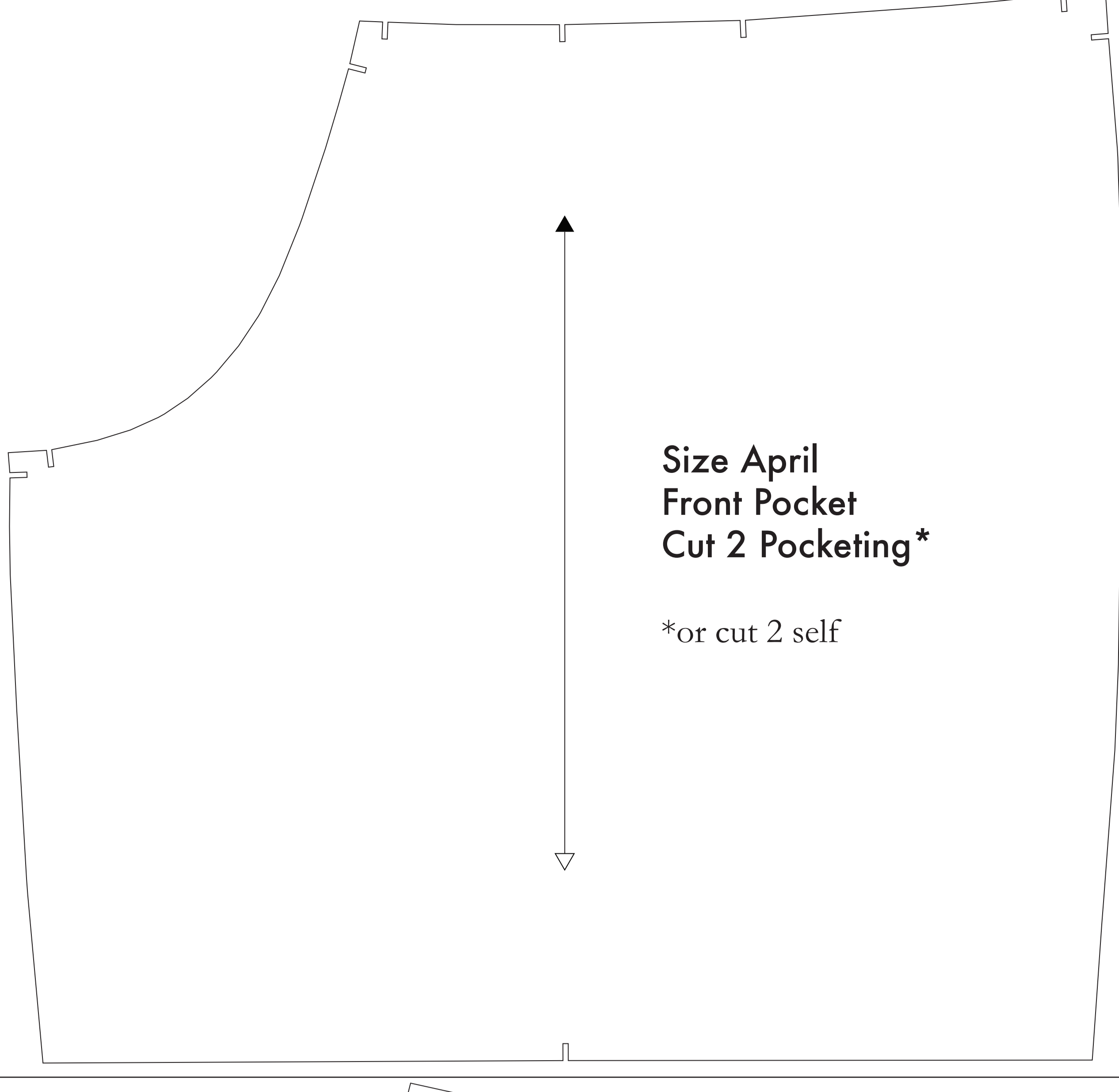
CUTTING INSTRUCTIONS

1. Print pattern. You can print the document (that on sheets of standard size paper and tape the pieces together, or print on a wide-format printer (36" or wider). Print or copy onto this service for approximately \$12. If available to you, the RES recommends wide-format printing.
2. Once your pattern is printed, cut along the continuous rectangle to remove any excess paper. This template should fit exactly on a 54" wide or larger piece of fabric that has been folded in half. If your fabric is less than 54" wide: **NOTE A:** For maximum flexibility, print the pieces on the fabric that does not have a direction. For fabric with a nap, such as velvet or corduroy or fabric with a clear directional print see **NOTE B**.
3. Fold your fabric in half along the lengthwise grain, matching selvage edge to selvage edge, selvage to the self, and edge to edge of fabric. The narrow hanger straps fabric from unrolling or fraying. When it is in place that resembles the top, though not as frequently, a clearly finished line will be found. Avoid this edge in your cut pieces on the reverse (especially when the main body of the fabric).
4. Place the paper template on top your fabric, matching the folded edge of the fabric with the side of the paper marked "folded edge".
5. Place pins throughout the template pinning together both layers of fabric as well as the paper.
6. Cut around the perimeter of each piece.
7. Laying the pins in place, you will need need to snip each of the notches, taking care to not snip beyond the end of the 1/4" depth.
8. **Notches are the 1/4" depth notches that are found throughout the pattern. Some notches indicate where allowances exist, and others will help you align pattern pieces while sewing.**
9. Mark all center fold lines, waistlines, or notches as indicated by the cutting guide. **These notches, waistlines, or notches are indicated by the cutting guide. They will be found on the Front Collar, Bodice Back, and if your pattern contains hanger straps will be found on the Bodice Front.**
10. Cut the Front Pocket Bag out of a lighter packing material. If you are not using a packing material, then the Front Pocket Bag may be cut alongside your other pattern pieces. Packing is used to make look in case of thicker material - You will find an example of packing on any page of this page.

NOTE A: FABRIC LESS THAN 54" WIDE
 If your fabric is less than 54" wide you will need to cut each pattern piece individually from the paper template and then transfer each piece to your fabric using the pattern pieces on that sheet to transfer them. The amount of material you will need will vary depending on the fabric you use. To find the precise amount of fabric you will need, follow the pattern markings on the paper template. To find the precise amount of fabric you will need, follow the pattern markings on the paper template. To find the precise amount of fabric you will need, follow the pattern markings on the paper template.

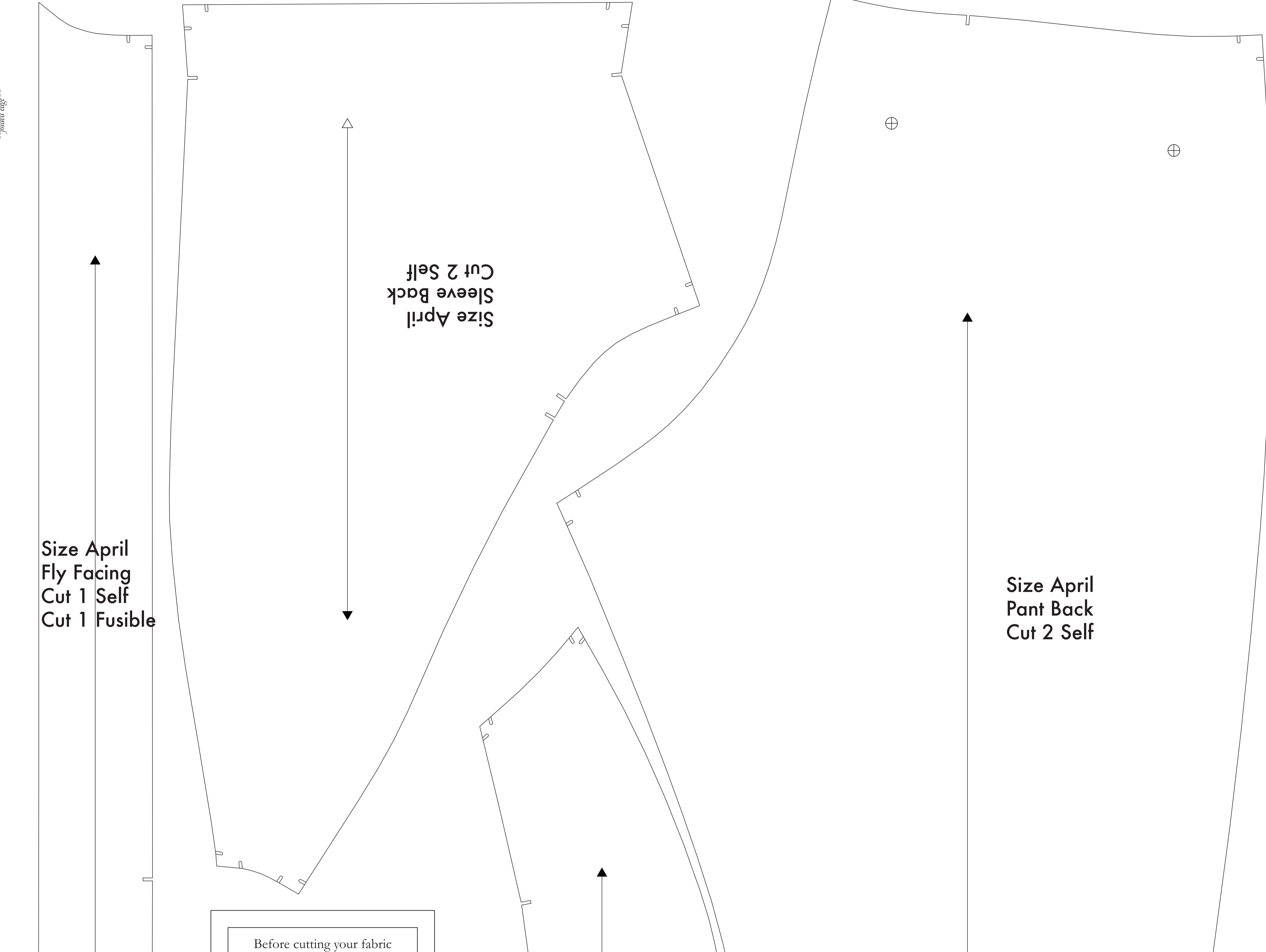
NOTE B: FABRIC WITH OR DIRECTIONAL PATTERN
 If your fabric has a directional pattern, such as a plaid or a pattern with a nap, you will need to follow the pattern markings on the paper template. To find the precise amount of fabric you will need, follow the pattern markings on the paper template. To find the precise amount of fabric you will need, follow the pattern markings on the paper template.

NOTE C: USING FUSIBLE INTERFACING
 Fusible interfacing is a material that is used to reinforce, strengthen, and stabilize certain pieces of a garment. It is used to reinforce the collar, cuffs, waistband, and other areas of a garment that require extra support. It is used to reinforce the collar, cuffs, waistband, and other areas of a garment that require extra support.



Size April Front Pocket Cut 2 Pocketing*

*or cut 2 self



Size April Fly Facing Cut 1 Self Cut 1 Fusible

Size April Sleeve Back Cut 2 Self

Size April Pant Back Cut 2 Self

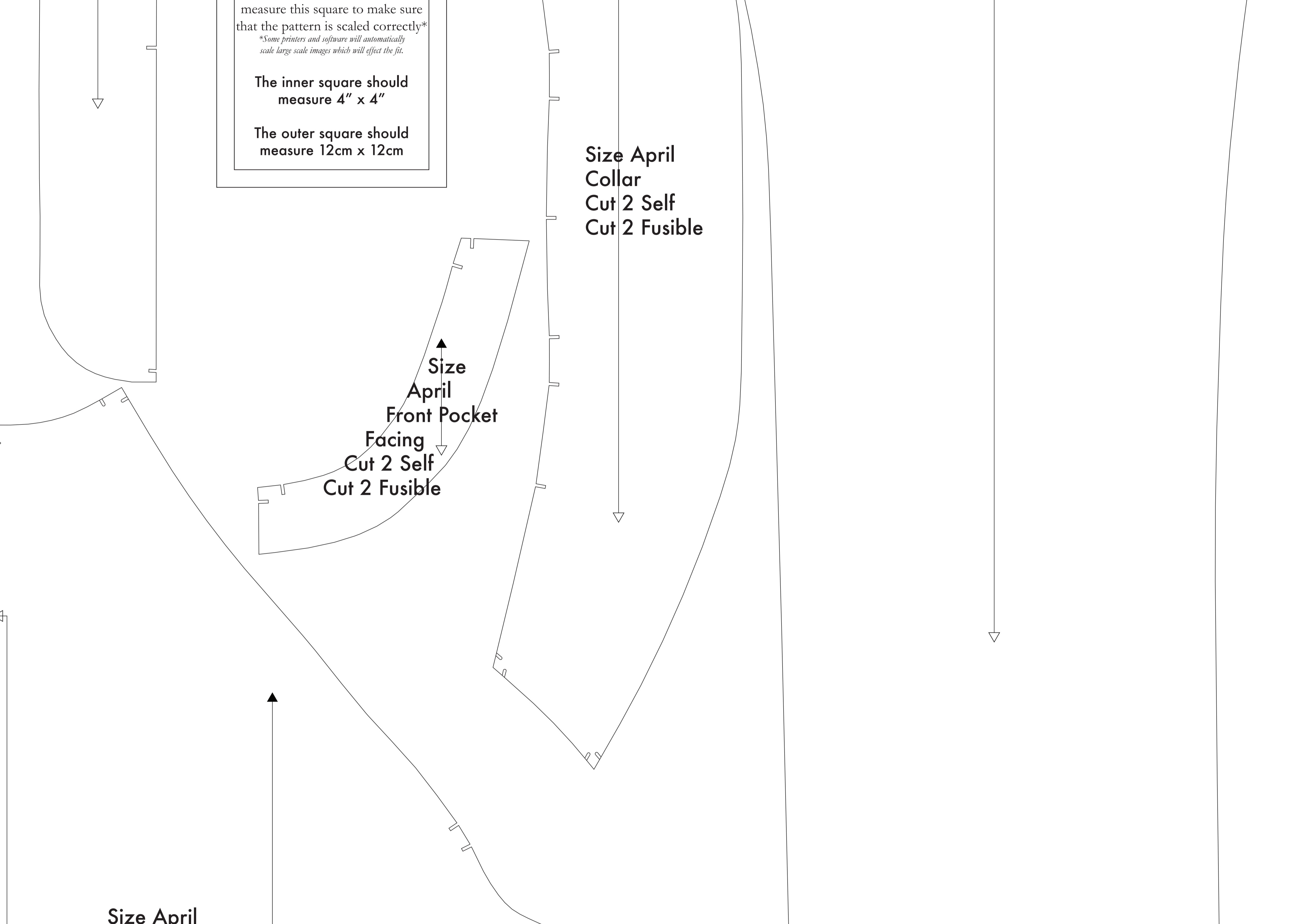
Before cutting your fabric measure this square to make sure that the pattern is scaled correctly*
 *Some printers and software will automatically make large scale images which will affect the fit.

The inner square should measure 4" x 4"

The outer square should measure 12cm x 12cm

Size April Collar Cut 2 Self Cut 2 Fusible

Size April Front Pocket Facing Cut 2 Self Cut 2 Fusible



Size April Bodice Back Cut 1 on Fold

Size April Bodice Front Cut 2 Self

Size April Pant Front Cut 2 Self

Size April Front Pocket Backing Cut 2 Self Cut 2 Fusible

Size April Fly Cut 1 Self Cut 1 Fusible

Size April Sleeve Front Cut 2 Self

Belt Loops Cut 1 Self

Size April Front Waistband Cut 2 Self

Size April Back Pocket Cut 2 Self

Size April Back Waistband Cut 1 Self - On Fold