

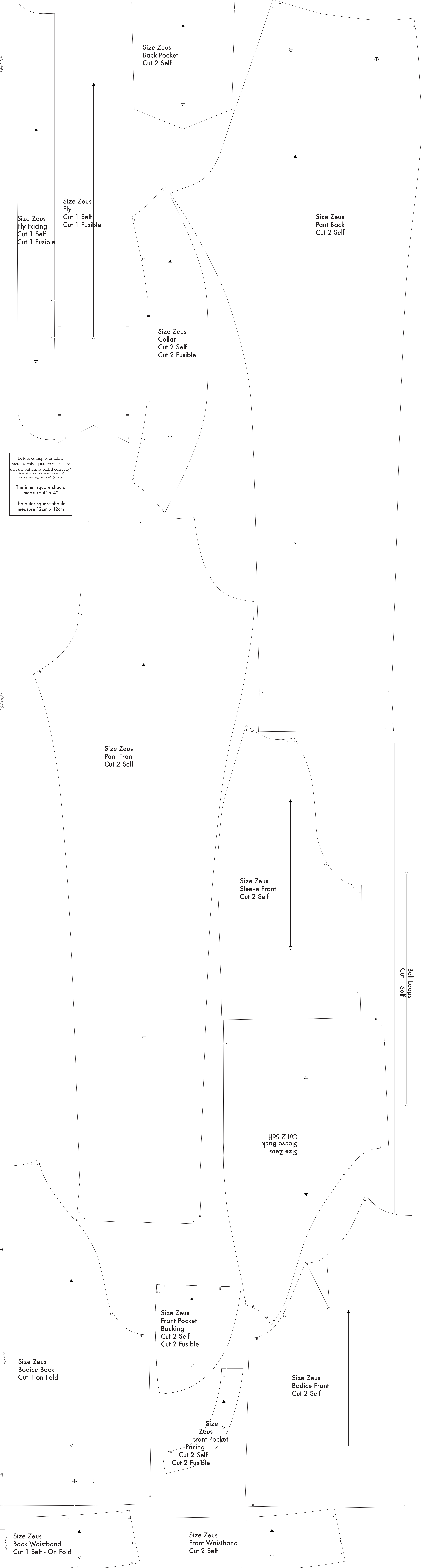
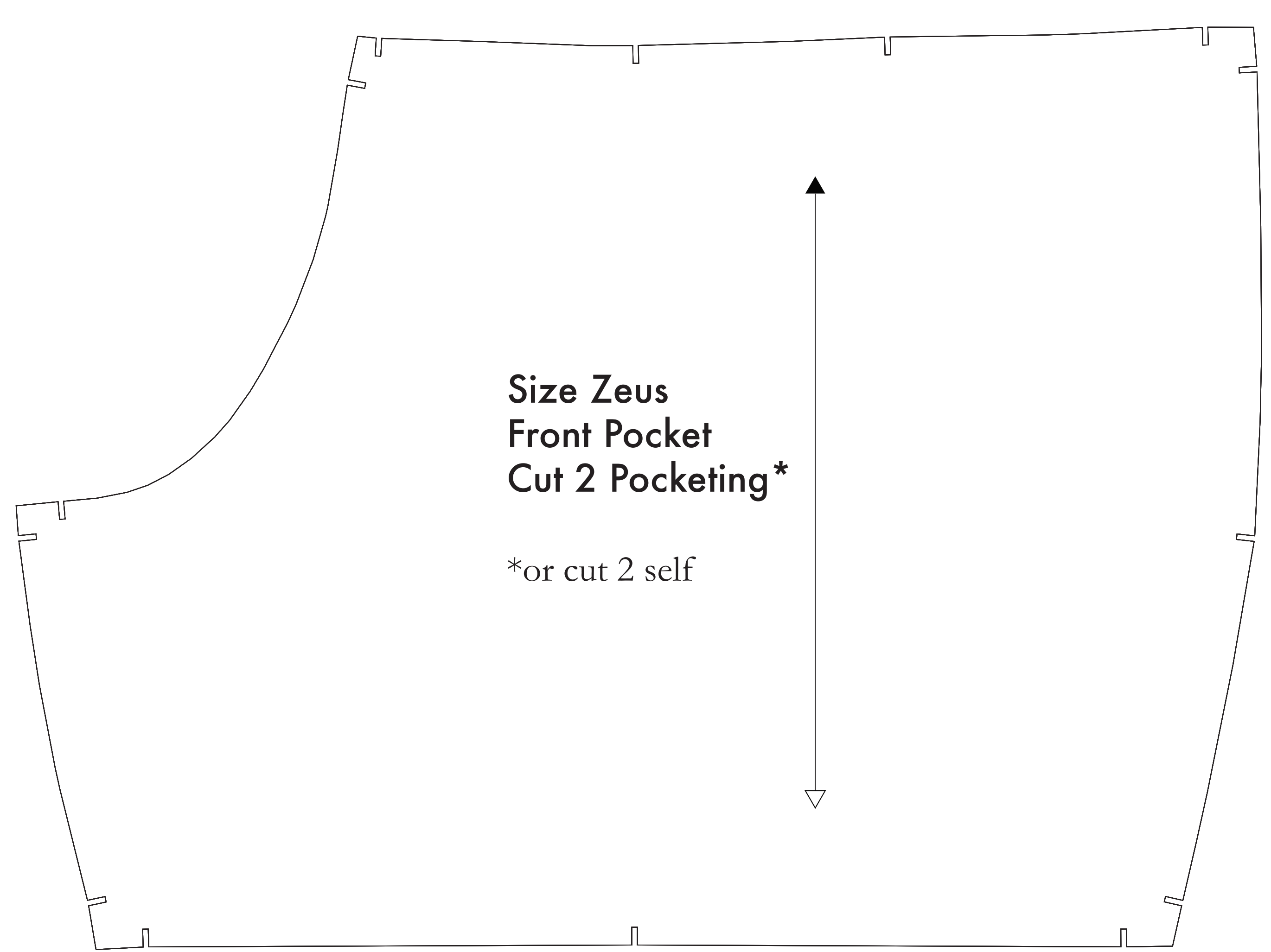
- SUPPLIES NEEDED**
- 2 1/2 YARDS OF 54" WIDE FABRIC
 - SHARP SCISSORS
 - REMOVABLE MARKING MEDIUM (chalk, wax, tailor's tuck, etc.)
 - 1 - 25" NON-SEPARATING ZIPPER
 - THREAD
 - SEWING MACHINE (optional)
 - 1/2 YARD OF THINNER POCKET FABRIC
 - FUSIBLE INTERFACING

- CUTTING INSTRUCTIONS**
1. These pieces may be printed on a sheet of standard size paper and taped the pieces together, or print on a wide-format printer (24" or wider). Print shops offer this service for approximately \$12. If available to you, the BDX is recommended wide-format printing.
 2. Once your pattern is printed, cut along the outermost rectangle to remove any excess paper. This template should fit exactly on a 48" wide or longer piece of fabric that has been folded in half. If your fabric is less than 48" wide use **NOTE A**. For maximum yield this pattern is laid out for fabric that also may have a direction. For fabric with a strong grain or a color or pattern or fabric with a clear directional grain use **NOTE B**.
 3. Fold your fabric in half along the lengthwise grain matching selvage edge to selvage edge. Selvage is the self-finished edge of fabric. This means how the fabric from manufacturing or buying. When it has an edge that resembles any fringe, though just as frequently, a clearly finished line will be found. Avoid this edge in your cut pieces as the texture frequently differs from the rest of the fabric.
 4. Place the paper template on top your fabric, matching the folded edge of the fabric with the side of the paper marked "folded edge".
 5. Place pins throughout the template pinning together both layers of fabric as well as the paper.
 6. Cut around the perimeter of each piece.
 7. Leaving the pins in place, you will next need to snip each of the notches, taking care to not snip beyond the end of the notch.
 8. *Notches are A, U shaped markings that are found throughout the pattern. Make and/or indicate your notches visible, which allow you to help you line up pattern pieces when sewing.*
 9. Mark all notches and fold lines. Using pins, being together both layers of fabric and the pattern, mark the center of each notched hole with chalk, wax or other removable, non-permanent tool. A tailor's tuck may also be used.
 10. Your pattern will be cut, or marked, as needed by the following guide:
This will be found on the Front Back, Back Back, and all of your pattern pieces that state that you will find a notch on the Back, Front, Fly and Fly Facing.
 11. **OPTIONAL:** Cut fusible interfacing pieces (see **NOTE C** for more info). Pattern pieces that are fusible will be marked with the directions "Cut 2 Fusible" or "Cut 1 Fusible". These pieces are the Collar, Fly, Fly Facing, Front Pocket Facing, and Front Pocket Facing. To cut the fusible, lay the material down with the glue side facing up. Then place your pattern down and cut around the perimeter of each piece and notch.
 12. Cut the Front Pocket Back out of a lighter pocketing material. If you are not using a pocketing material, then the Front Pocket Bag may be cut or separate your other pattern pieces. *Pocketing is used to make both in case of thicker materials - 1/2 yard and an example of pocketing or cut part of the piece.*

NOTE A: FABRIC LESS THAN 54" WIDE
If your fabric is less than 54" wide you will need to cut and sew your jumpsuit from the pattern pieces and fabric from your fabric store. You will need to adjust the pattern pieces to fit your fabric. The pattern pieces are laid out for fabric that also may have a direction. For fabric with a strong grain or a color or pattern or fabric with a clear directional grain use **NOTE B**.

NOTE B: FABRIC WITH NAP OR DIRECTIONAL PATTERN
For fabric with nap such as velvet or other fabrics, place the pattern pieces on the fabric with the nap or directional pattern in the same direction. The pattern pieces are laid out for fabric that also may have a direction. For fabric with a strong grain or a color or pattern or fabric with a clear directional grain use **NOTE B**.

NOTE C: USING FUSIBLE INTERFACING
Fusible interfacing is a material that is used to stabilize, strengthen, and fabric construction to garments. When the use of fusible interfacing is specified, the fabric and fusible interfacing should be cut together. The fabric and fusible interfacing should be cut together.



Before cutting your fabric measure this square to make sure that the pattern is scaled correctly*

*Some printers and software will automatically scale large scale images which will affect the fit.

The inner square should measure 4" x 4"

The outer square should measure 12cm x 12cm