

- SUPPLIES NEEDED**
- 3 YARDS OF 54" WIDE FABRIC
 - SHARP SCISSORS
 - REMOVABLE MARKING MEDIUM (chalk, wax, tailor's tack, etc.)
 - 1/4" NONSEPARATING ZIPPER
 - THREAD
 - SEWING MACHINE
- Optional:
- 1/2 YARD OF THINNER POCKET FABRIC
 - FUSIBLE INTERFACING

CUTTING INSTRUCTIONS

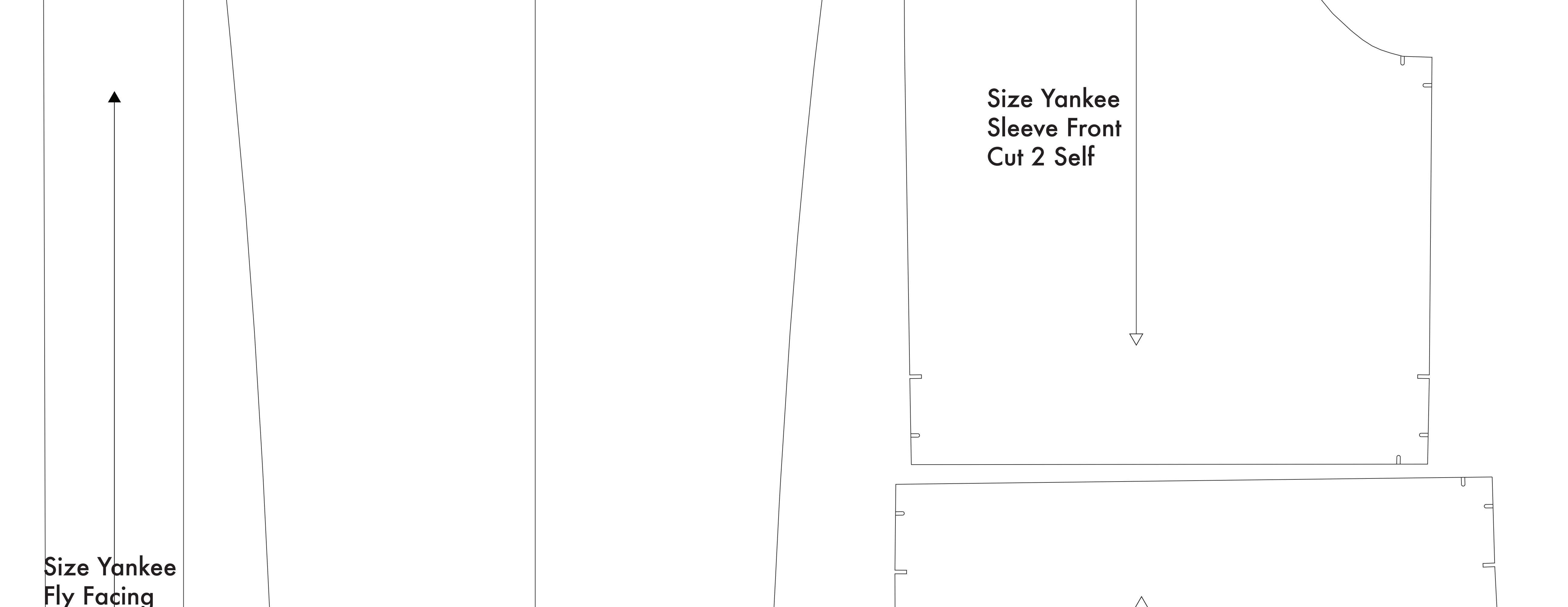
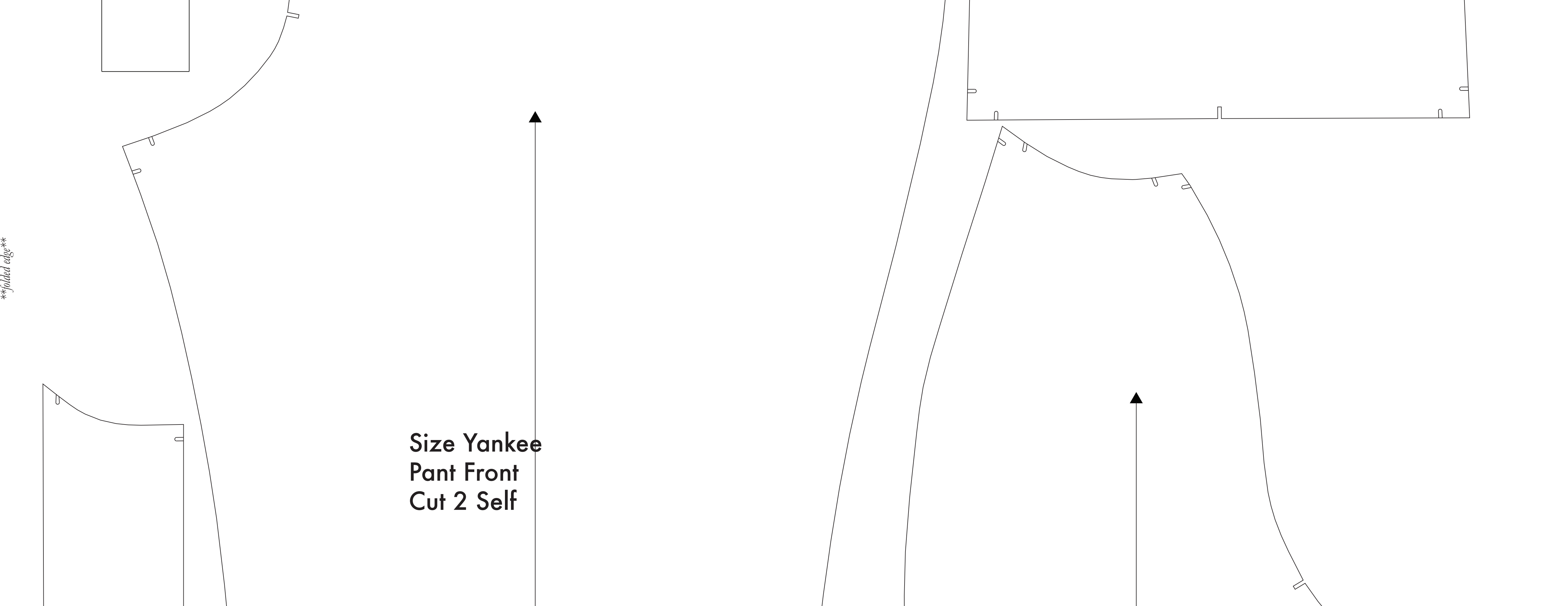
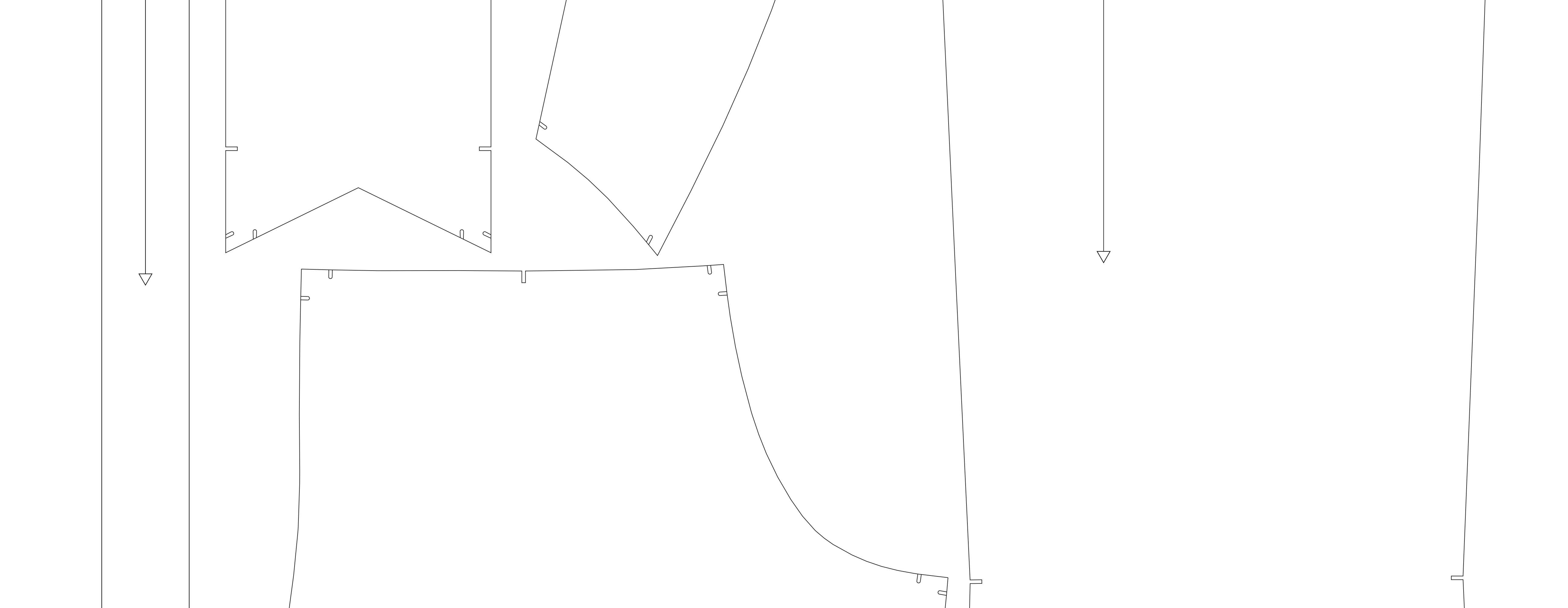
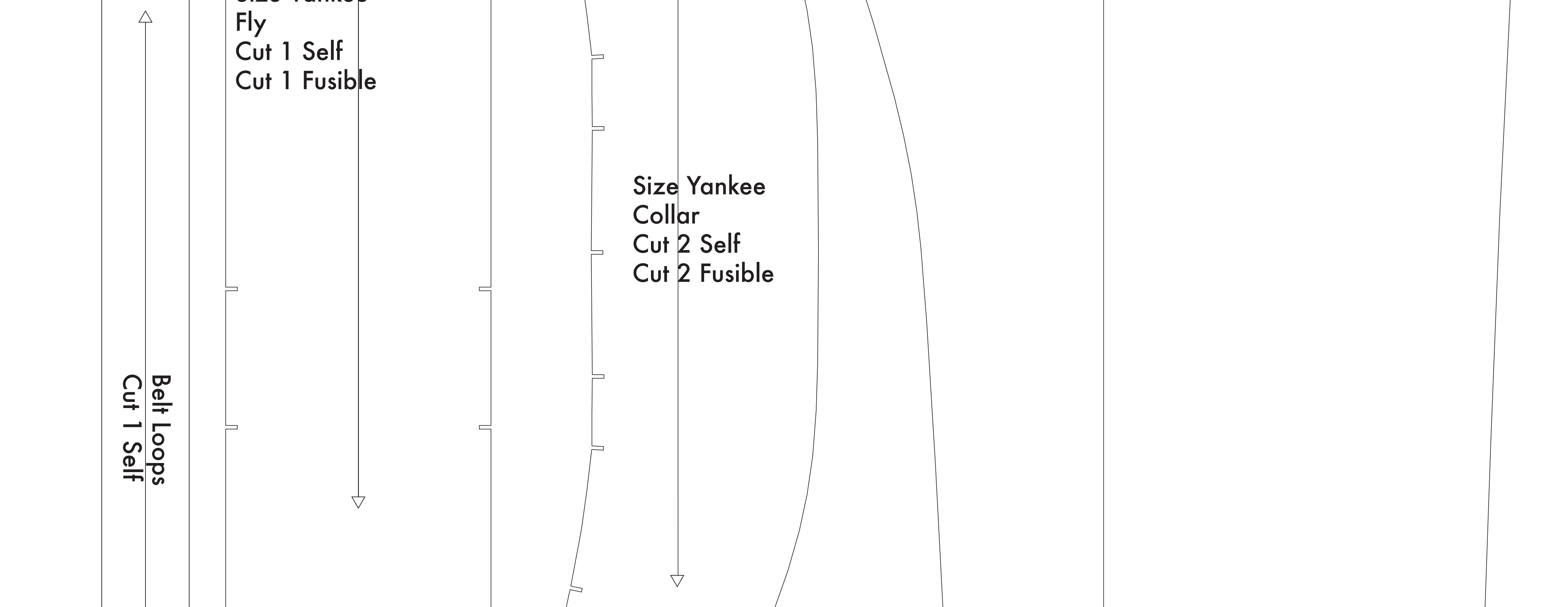
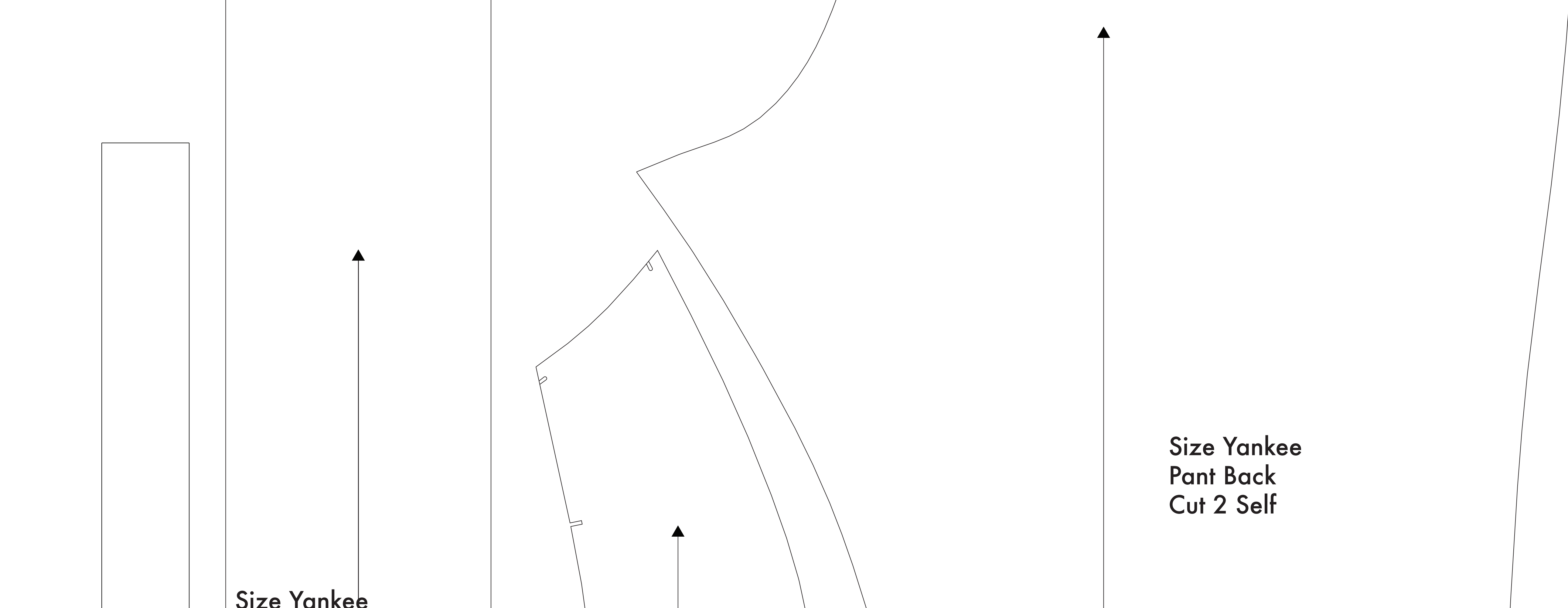
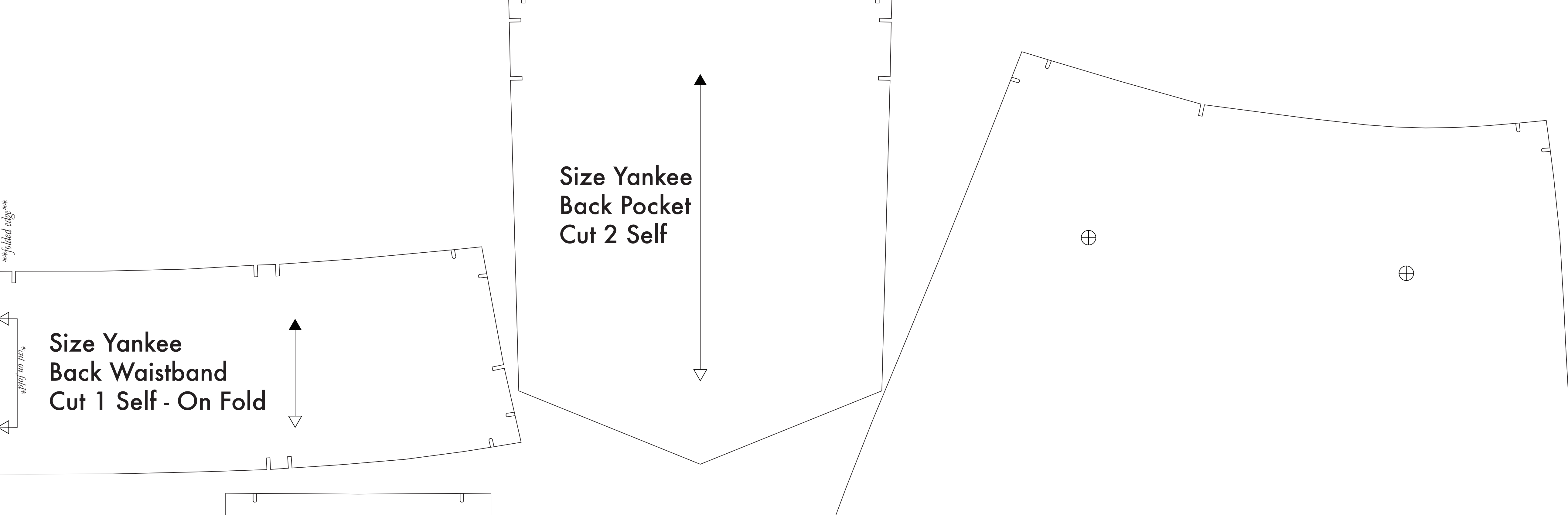
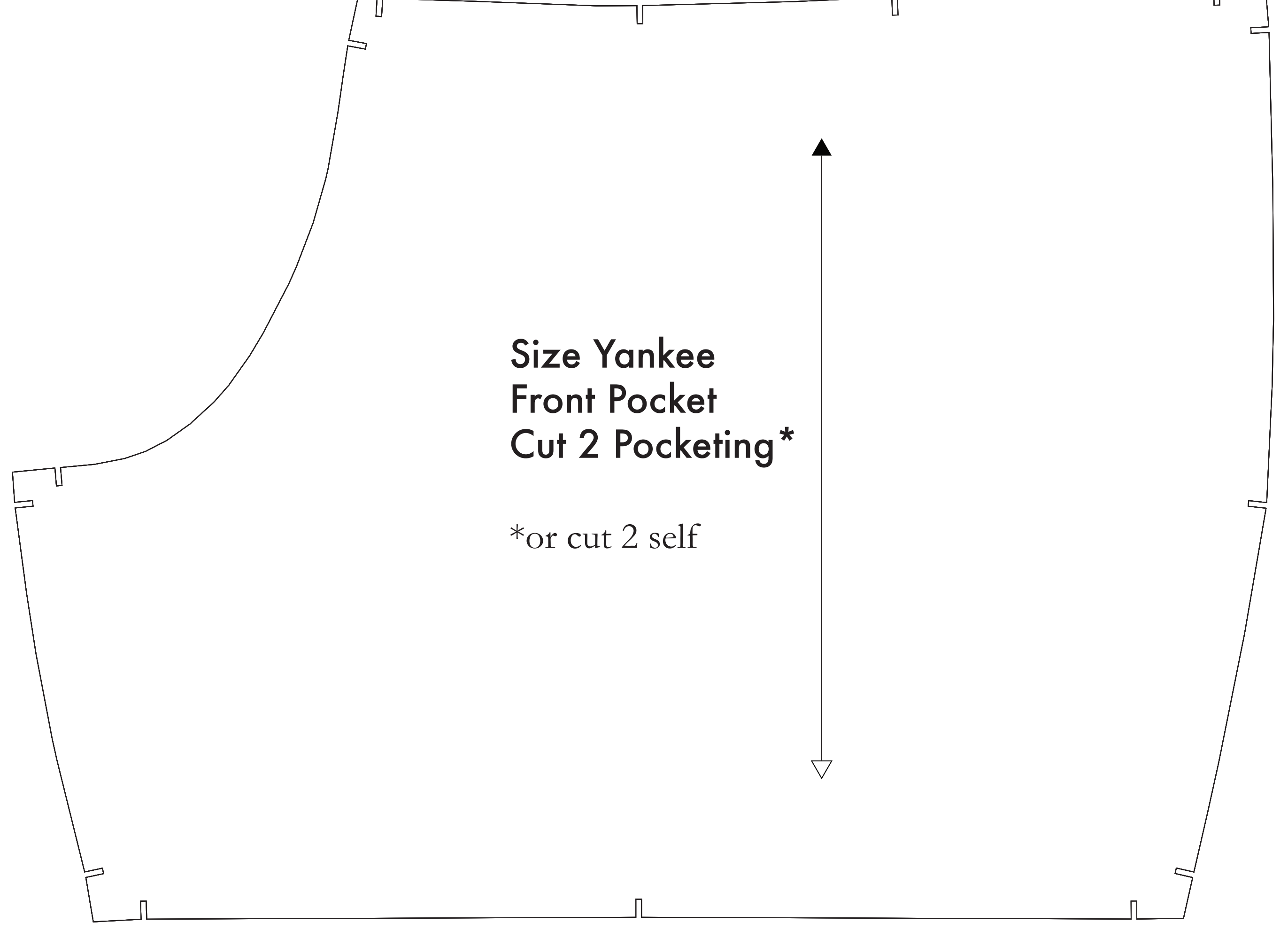
1. Print pattern. You can print the document tiled on sheets of standard size paper and tape the pieces together, or print on a wide-format printer (36" or wider). These sheets will also serve for approximately 82% if available to you, the 82% recommendation is for printing.
2. Check your pattern is printed, cut along the outermost rectangle to remove any excess paper. This template should fit exactly on a 36" wide or larger piece of fabric that has been folded in half. If your fabric is less than 36" wide see **NOTE A**. For maximum tuck the pattern is laid out flat (fabric that does not have a direction). For fabric with a nap, such as velvet or corduroy or fabric with a clear directional print see **NOTE B**.
3. Fold your fabric in half along the lengthwise grain matching selvedge edge to selvedge edge. Scholage is the self-finished edge of fabric. This narrow border keeps the fabric from unraveling or fraying. When it has an edge that resembles the fringe, though not as frequently, a evenly finished line will be found. Avoid this edge as your cut pieces as the pattern frequently differs from the main body of the fabric.
4. Place the paper template on top your fabric, matching the folded edge of the fabric with the side of the paper marked "folded edge".
5. Place pins throughout the template pinning together both layers of fabric as well as the paper.
6. Cut around the perimeter of each piece.
7. Leaving the pins in place, you will next need to snip each of the notches, taking care to not snip beyond the end of the 1/4" depth.

8. **Mark all inner and outer notches, which show and high use.** Use up pattern pieces with care. They will be useful as the Flat Back, Bodice Back, and of your pattern indicates that later they will fold a notch on the Bodice Front.
9. **OPTIONAL:** Cut fusible interfacing pieces (see **NOTE C** for more info). Pattern pieces that use fusible will be marked with the direction "Cut 2 Fusible" or "Cut 1 Fusible". These pieces are the Collar, Fly, Fly Facing, Front Pocket Facing, and Front Pocket Backing. To cut the fusible, lay the material down with the side facing up, then place your pattern down and cut around the perimeter of each piece and notch.
10. Cut the Front Pocket Bag (see note of a fusible pocketing material). If you are not using a pocketing material, then the Front Pocket Bag may be cut alongside your other pattern pieces. *Pushing it out to make both in case of thicker materials - You will find an example of pocketing in every piece of this page.*

NOTE A: FABRIC LESS THAN 36" WIDE
 If your fabric is less than 36" wide you will need to cut each pattern piece individually from the paper template and then piece them together. This means you will need to use a separate marking and pinning area for each pattern piece. For the marking, use a separate marking area for each pattern piece. For the pinning, use a separate pinning area for each pattern piece. For the cutting, use a separate cutting area for each pattern piece.

NOTE B: FABRIC WITH NAP OR DIRECTIONAL PATTERN
 For fabric with a nap or a directional pattern, such as velvet or corduroy, or fabric with a clear directional print, such as a floral or geometric print, you must cut each pattern piece individually from the paper template. This means you will need to use a separate marking and pinning area for each pattern piece. For the marking, use a separate marking area for each pattern piece. For the pinning, use a separate pinning area for each pattern piece. For the cutting, use a separate cutting area for each pattern piece.

NOTE C: USING FUSIBLE INTERFACING
 Fusible interfacing is a material that is used to reinforce, stabilize, and add body to pattern pieces in a garment. When the use of fusible interfacing is optional, the fabric has been recommended to be used. To use fusible interfacing, you must use a separate marking and pinning area for each pattern piece.



Before cutting your fabric measure this square to make sure that the pattern is scaled correctly*
 *Some printers and software will automatically scale large scale images which will affect the fit.

The inner square should measure 4" x 4"
 The outer square should measure 12cm x 12cm