



**JUMPSUIT CUTTING INSTRUCTIONS**  
 OCCASIONAL: 80% COTTON / 20% POLYESTER  
 WWW.JUMPSUIT.IT

- SUPPLIES NEEDED**
- 3/4 YARDS OF 54" WIDE FABRIC
  - SHARP SCISSORS
  - REMOVABLE MARKING MEDIUM (chalk, wax, tailor's tack, etc.)
  - 1 - 24" NON-SEPARATING ZIPPER
  - THREAD
  - SEWING MACHINE
  - OPTIONAL:
    - 1/2 YARD OF THINNER POCKET FABRIC
    - FUSIBLE INTERFACING

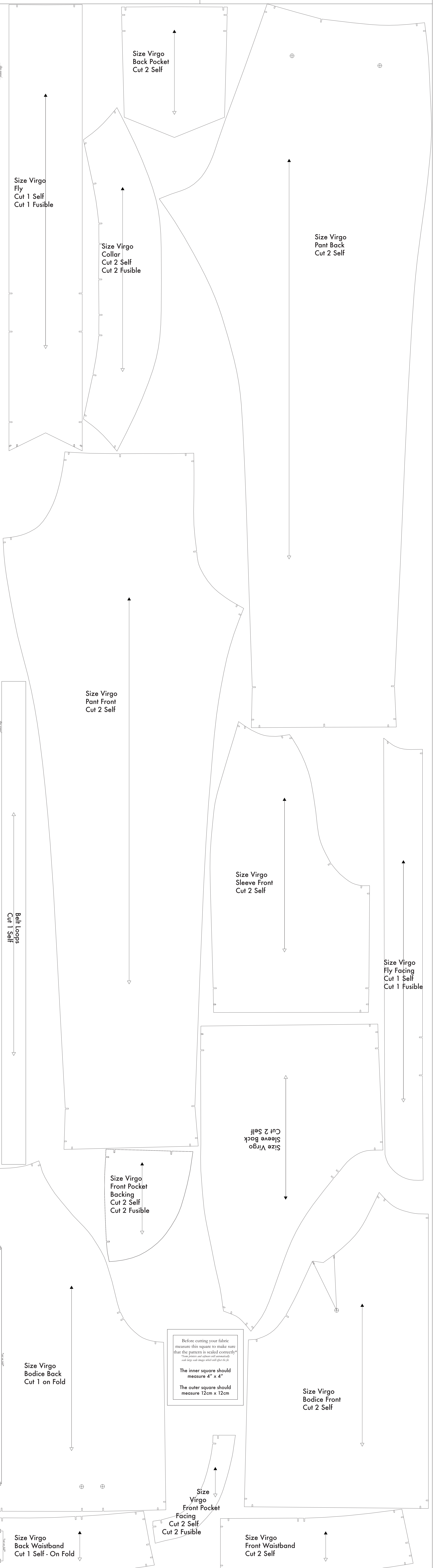
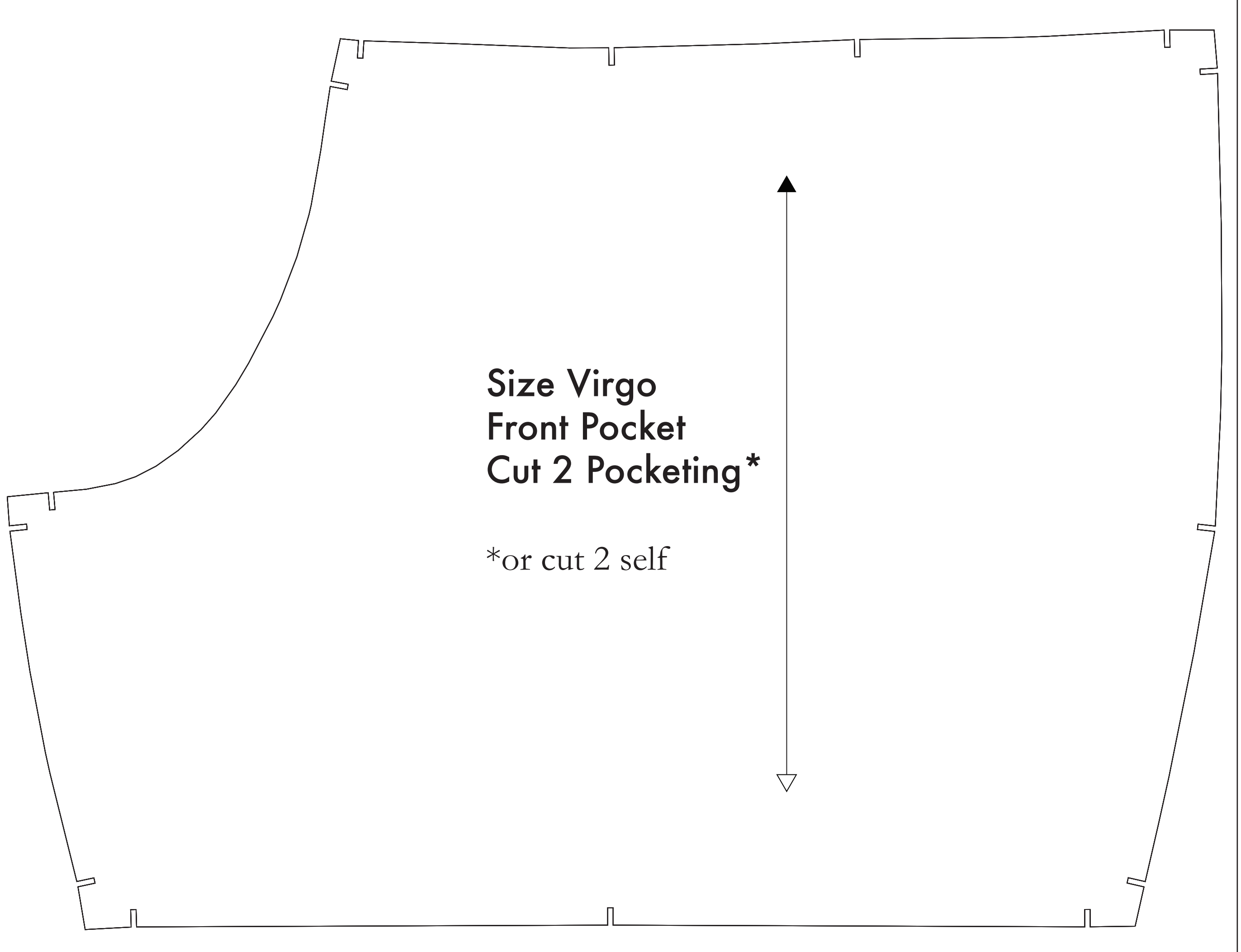
**CUTTING INSTRUCTIONS**

1. Trace pattern. You can print this document third on sheets of standard size paper and tape the pieces together, or print on a wide-format printer (36" or wider). Print sheets offer this service for approximately \$12. If available to you, the B2B is recommended with better printing.
2. Once your pattern is printed, cut along the outermost rectangle to remove any excess paper. This template should fit exactly on a 36" wide or larger sheet of fabric that has been folded in half. If your fabric is less than 36" wide use **NOTE A**. For maximum yield this pattern is laid out for fabric that does not have a direction. For fabric with a nap, such as velvet or corduroy or fabric with a clear directional print see **NOTE B**.
3. Fold your fabric in half along the lengthwise grain matching selvedge edge to selvedge edge. Selvedge is the well-finished edge of fabric. This narrow border keeps the fabric from stretching or fraying. Once it has an edge that resembles any fabric, through for an frequently, a clearly finished line will be found. Avoid this edge in your cut pieces as the texture frequently differs from the main body of the fabric.
4. Trace the paper template on top your fabric, matching the folded edge of the fabric with the side of the paper marked "folded edge".
5. Trace your throughout the template pinning together both layers of fabric as well as the paper.
6. Cut around the perimeter of each piece.
7. Leaving the pins in place, you will need to snip each of the notches, taking care to not snip beyond the end of the U shape!
  - **Notches are 1/4" deep markings that are found throughout the pattern.**
  - **Some notches indicate seam allowance notches, which when cut help you fit or pattern pieces easily along.**
  - **Mark all inner or cut notches.** Using a pin, bring together both layers of fabric and the pattern, mark the center of each notches with chalk, wax or other removable, non-permanent tool. A notches' back may also be used.
  - **This narrow shell hole, or marking, are indicated by the following symbols:**
  - **For notches that are not cut, mark with a dot.**
  - **For notches that are cut, mark with a U shape.**
8. **OPTIONAL:** Cut fusible interfacing pieces per **NOTE C**. For some pieces that use fusible will be marked with the direction "Cut 2 fusible" or "Cut 1 fusible". These pieces are the Collar, Fly, Fly Facing, Front Pocket Facing, and Front Pocket Backing. To cut the fusible, lay the material down with the glue side facing up, then place your pattern down and cut around the perimeter of each piece and notch.
9. Cut the Front Pocket Bag out of a lighter weighting material. If you are not using a pocketing material, then the Front Pocket Bag may be cut alongside your other pattern pieces. Pushing it out is easier both in case of fabric material - You will find an example of pushing or snip part of this piece.

**NOTE A: FABRIC LESS THAN 34" WIDE**  
 If your fabric is less than 34" wide you will need to use each pattern piece individually from the paper template and create a piece for your fabric width you to piece together pieces or that from a pattern with the quantity conversion on the pattern or attached cut sheet paper piece for use of one 34" wide for pocketing material. There has not been the direction or grain of the fabric. When using a piece or your fabric these pieces should be pinned to the selvedge edge of your fabric. To make sure they are pinned to the selvedge edge, the narrow border to the edge of the fabric, then mark the side distance with the heavy line. When you go to fabric pieces are indicated from the edge of your fabric does the pattern piece is correct placement.

**NOTE B: FABRIC WITH NAP OR DIRECTIONAL PATTERN**  
 For fabric with a nap such as velvet or corduroy, fabric with a clear directional print, or for marking paper such as shell, you will need to cut the pattern pieces individually from the paper template, ensuring the nap or shell grain is correct on each pattern piece as the nap direction.

**NOTE C: USING FUSIBLE INTERFACING**  
 Fusible interfacing is material that is used to stiffen, strengthen, and stabilize certain pieces in a garment. Material from fabric stores normally light to medium weight non-stretch or stretch fabric interfacing is the commonest of FUSIBLES.



Before cutting your fabric measure this square to make sure that the pattern is scaled correctly!  
 \*Some printers and software will automatically scale larger scale images which will affect the fit.  
 The inner square should measure 4" x 4"  
 The outer square should measure 12cm x 12cm