

- SUPPLIES NEEDED**
- 3 1/4 YARDS OF 54" WIDE FABRIC
 - SHARP SCISSORS
 - REMOVABLE MARKING MEDIUM (chalk, wax, tailor's tuck, etc.)
 - 1 24" NONSEPARATING ZIPPER
 - THREAD
 - SEWING MACHINE
- OPTIONAL:**
- 1 1/2 YARD OF THINNER POCKET FABRIC
 - FUSIBLE INTERFACING

CUTTING INSTRUCTIONS

1. Print pattern. You can print the document sheet on sheets of standard size paper and tape the pieces together, or print on a wide-format printer (60" or wider). These sheets offer the service for approximately 81% of available to you, the 80% recommended wide-format printing.
2. Once your pattern is printed, cut along the outermost rectangle to remove any excess paper. This template should fit exactly on a 54" wide or larger piece of fabric that has been folded in half. If your fabric is less than 54" wide, see **NOTE A**. For maximum yield this pattern is laid out flat fabric that does not have a direction. For fabric with a nap, such as velvet or corduroy or fabric with a clear directional grain see **NOTE B**.
3. Fold your fabric in half along the lengthwise grain matching selvedge edge to selvedge edge. Sew along the self-finished edge of fabric. This narrow border keeps the fabric from unraveling or fraying. Often it has an edge that resembles any fringe, though not as frequently, a clearly finished edge will be found. Fold this edge to your cut piece as the fabric frequently differs from the main body of the fabric.
4. Place the paper template on top your fabric, matching the folded edge of the fabric with the side of the paper marked "folded edge".
5. Trace your template on top your fabric, matching the folded edge of the fabric with the side of the paper marked "folded edge".
6. Trace your template on top your fabric, matching the folded edge of the fabric with the side of the paper marked "folded edge".
7. Trace your template on top your fabric, matching the folded edge of the fabric with the side of the paper marked "folded edge".
8. Trace your template on top your fabric, matching the folded edge of the fabric with the side of the paper marked "folded edge".
9. Trace your template on top your fabric, matching the folded edge of the fabric with the side of the paper marked "folded edge".
10. Trace your template on top your fabric, matching the folded edge of the fabric with the side of the paper marked "folded edge".

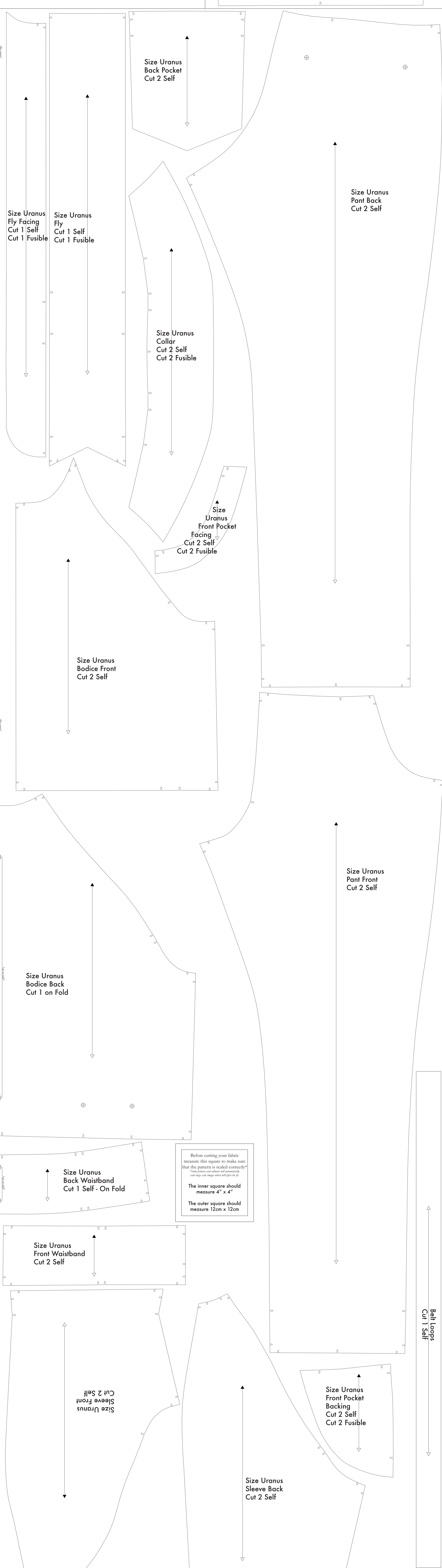
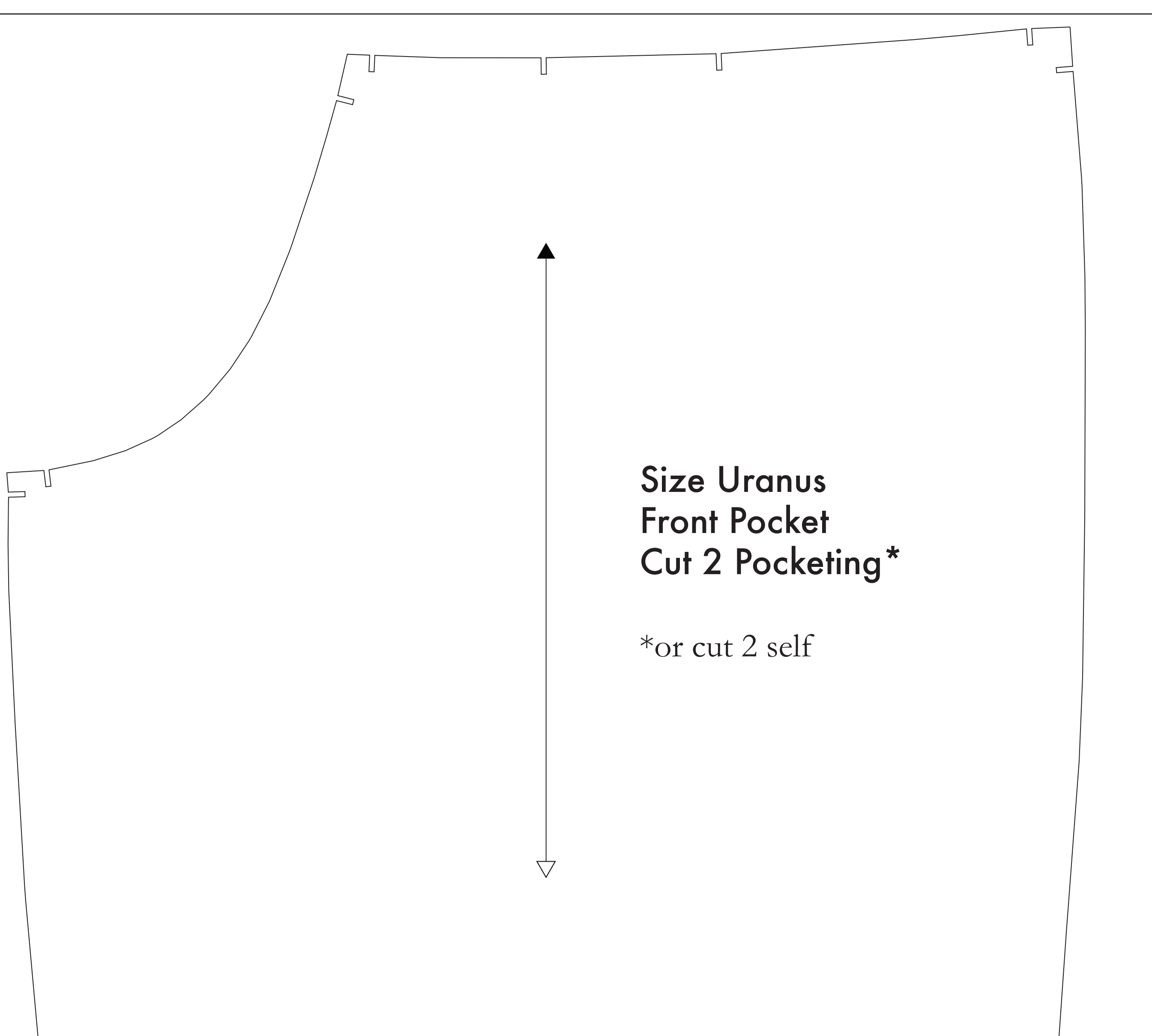
NOTE A: FABRIC LESS THAN 54" WIDE
 If your fabric is less than 54" wide, you will need to print each piece piece individually from the paper template and piece them together on your fabric. Additionally, you may need to piece together the pieces in a different order. The pattern pieces are laid out in a specific order. The pattern pieces are laid out in a specific order. The pattern pieces are laid out in a specific order.

NOTE B: FABRIC WITH NAP OR DIRECTIONAL PATTERN
 If your fabric has a nap or a directional pattern, you will need to print each piece piece individually from the paper template and piece them together on your fabric. Additionally, you may need to piece together the pieces in a different order. The pattern pieces are laid out in a specific order. The pattern pieces are laid out in a specific order.

NOTE C: USING FUSIBLE INTERFACING
 Fusible interfacing is a material that is used to reinforce and stabilize the fabric. It is used to reinforce and stabilize the fabric. It is used to reinforce and stabilize the fabric. It is used to reinforce and stabilize the fabric.

OPTIONAL: Cut fusible interfacing pieces (see **NOTE C** for more info). Pattern pieces that use fusible will be marked with the direction "Cut 1 fusible" or "Cut 2 fusible". These pieces are the Collar, Fly, Fly Facing, Front Pocket Facing, and Front Pocket Backing. To cut the fusible, lay the material down with the glue side facing up, then trace your pattern down and cut around the perimeter of each piece and notch.

10. Cut the Front Pocket Bag out of a lighter pocketing material. If you are not using a pocketing material, then the Front Pocket Bag may be cut alongside your other pattern pieces. Pocketing material is not a fabric but is used to reinforce the material - You will find an example of pocketing on any part of this pattern.



Before cutting your fabric measure this square to make sure that the pattern is scaled correctly*

*Some printers and software will automatically scale large scale images which will affect the fit.

The inner square should measure 4" x 4"

The outer square should measure 12cm x 12cm