

JUMPSUIT CUTTING INSTRUCTIONS
 DOCUMENT: 823 JUMPSUIT CUTTING INSTRUCTIONS V1.0
 www.1001patterns.com

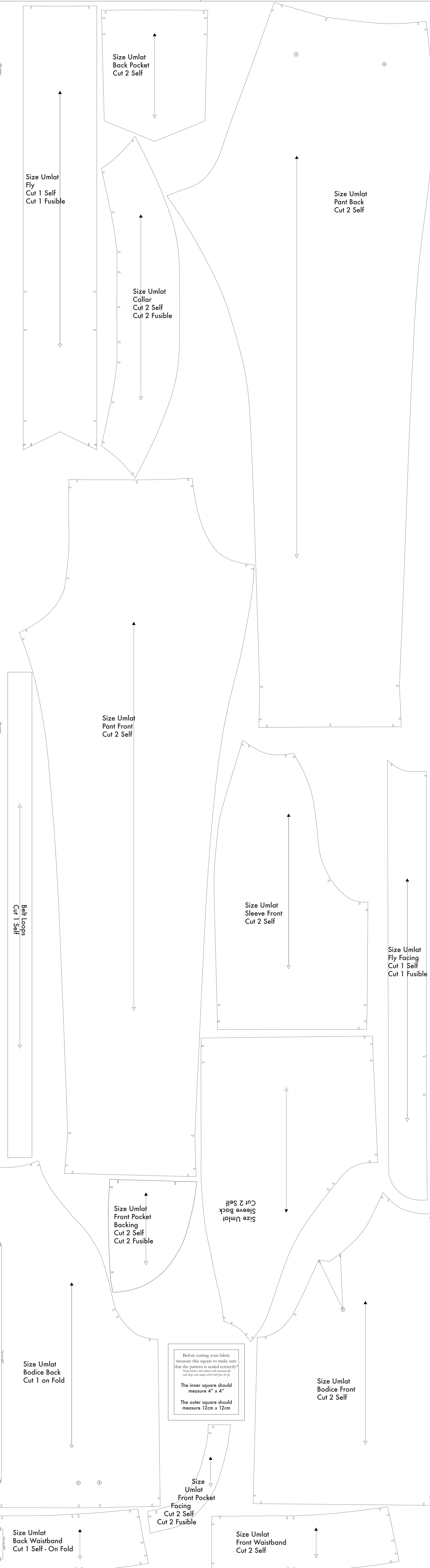
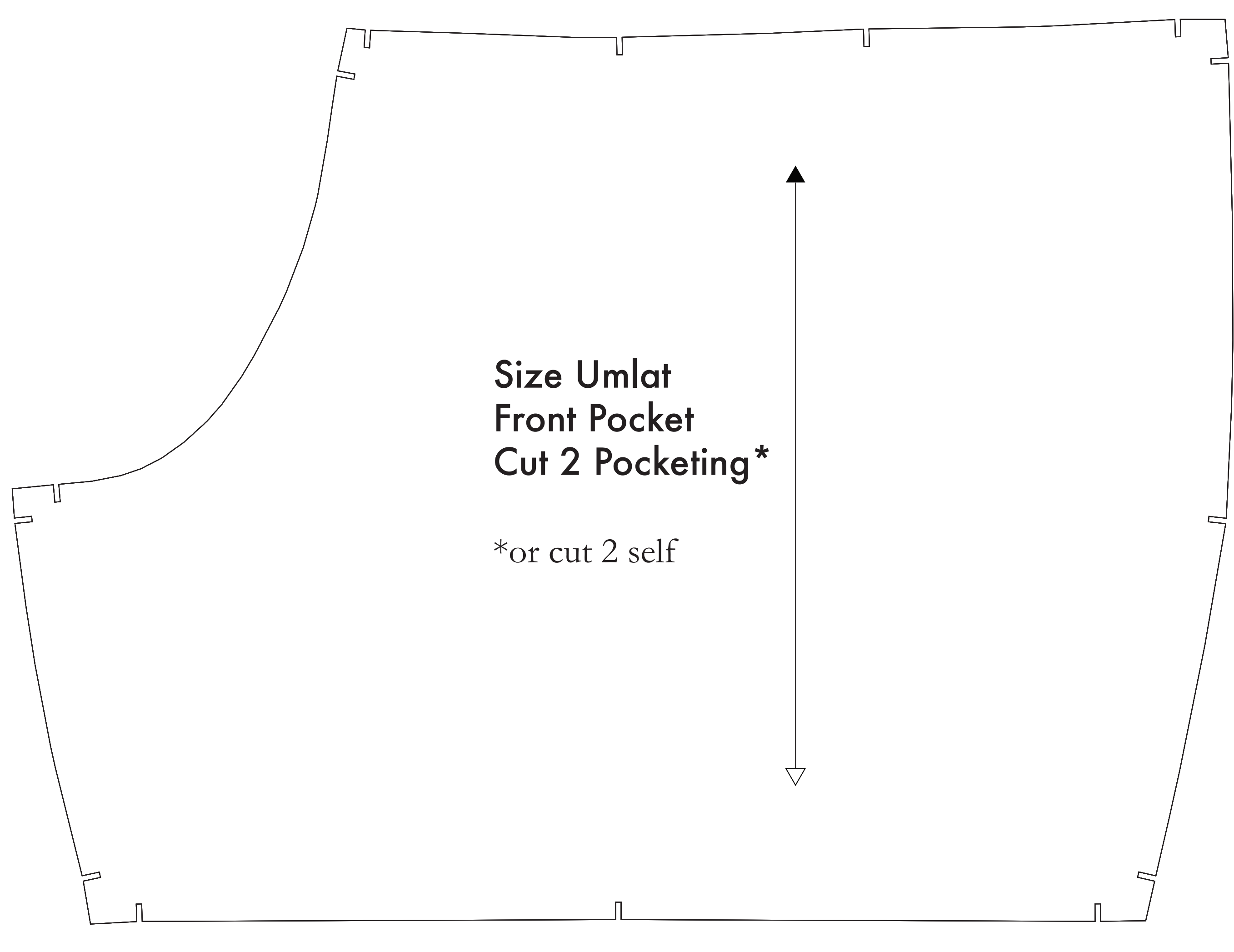
- SUPPLIES NEEDED**
- 3 1/4 YARDS OF 54" WIDE FABRIC
 - SHARP SCISSORS
 - REMOVABLE MARKING MEDIUM (chalk, wax, tailor's tuck, etc.)
 - 1/4" NON-SEPARATING ZIPPER
 - THREAD
 - SEWING MACHINE
- optional:
- 1/2 YARD OF THINNER POCKET FABRIC
 - FUSIBLE INTERFACING

- CUTTING INSTRUCTIONS**
- Print pattern. You can print this document sheet on sheets of standard size paper and tape the pieces together, or print on a wide-format printer (36" or wider). These sheets offer the service for approximately 1/12. If available to you, the BRS recommends wide-format printing.
 - Check your pattern is printed, cut along the outermost or inside-most lines. This template should fit exactly on a 1/4" wide or larger piece of fabric that has been folded in half. If your fabric is less than 54" wide, see NOTE A. For instructions, fold the pattern in half over the fabric that does not have a direction. Use fabric with a nap, such as velvet or corduroy or fabric with a clear directional print, see NOTE B.
 - Hold your fabric in half along the lengthwise grain marking on the edge. Marking in the self-finished edge of fabric. This narrow border keeps the fabric from unraveling or fraying. Once it has an edge that won't fray, the fabric is ready to be cut. Fold the fabric in half along the lengthwise grain marking on the edge. Marking in the self-finished edge of fabric. This narrow border keeps the fabric from unraveling or fraying. Once it has an edge that won't fray, the fabric is ready to be cut. Fold the fabric in half along the lengthwise grain marking on the edge. Marking in the self-finished edge of fabric. This narrow border keeps the fabric from unraveling or fraying. Once it has an edge that won't fray, the fabric is ready to be cut.
 - Place the paper template on top of your fabric, matching the folded edge of the fabric with the side of the paper marked "folded edge".
 - Trace your pattern on top of your fabric, matching the folded edge of the fabric as well as the paper.
 - Cut around the perimeter of each piece.
 - Leaving the pins in place, you will need to strip each of the notches, taking care to not strip beyond the end of the "U" shape.
- Notches are the "U" shaped markings that are found throughout the pattern. Some notches indicate seam allowances, which allow you to fit one piece into another. Some notches indicate where to place the zipper. They will be found on the Bust Back, Back Back, and our pattern contains four darts that you will find on the Bust Front.

NOTE A: FABRIC LESS THAN 54" WIDE
 If your fabric is less than 54" wide, you will need to cut each pattern piece individually from the paper template and then piece them together. The pattern pieces are marked with notches and arrows to indicate how to piece them together. The notches indicate notches and arrows to indicate how to piece them together. The notches indicate notches and arrows to indicate how to piece them together.

NOTE B: FABRIC WITH NAP OR DIRECTIONAL PATTERN
 If your fabric has a nap or a directional pattern, you will need to cut each pattern piece individually from the paper template and then piece them together. The pattern pieces are marked with notches and arrows to indicate how to piece them together. The notches indicate notches and arrows to indicate how to piece them together.

NOTE C: USING FUSIBLE INTERFACING
 Fusible interfacing is a material that is used to reinforce, strengthen, and stabilize certain pieces in a garment. While the use of fusible interfacing is optional, the BRS recommends its use in the following areas: Bust Back, Back Back, and our pattern contains four darts that you will find on the Bust Front.



Before cutting your fabric make sure that the pattern is scaled correctly!
 *Some printers and printers will automatically scale large scale images which will affect the fit.
 The inner square should measure 4" x 4"
 The outer square should measure 12cm x 12cm