

- SUPPLIES NEEDED**
- 3 YARDS OF 54" WIDE FABRIC
 - SHARP SCISSORS
 - REMOVABLE MARKING MEDIUM (chalk, wax, tailor's tuck, etc.)
 - 1 - 22" NON-SEPARATING ZIPPER
 - THREAD
 - SEWING MACHINE
- optional:**
- 1/2 YARD OF THINNER POCKET FABRIC
 - FUSIBLE INTERFACING

- CUTTING INSTRUCTIONS**
- Print pattern. You can print this document tiled on sheets of standard size paper and tape the pieces together, or print on a wide-format printer (36" or wider). Print shops offer this service for approximately \$12. If available to you, the BBS recommends wide-format printing.
 - Once your pattern is printed, cut along the outermost rectangle to remove any excess paper. This template should fit exactly on a 54" wide or larger piece of fabric that has been folded in half. If your fabric is less than 54" wide see **NOTE A**. For maximum yield this pattern is laid out flat (fabric that does not have a direction). For fabric with a nap, such as velvet or couliure or fabric with a clear directional print see **NOTE B**.
 - Hold your fabric in half along the lengthwise grain matching selvage edge to selvage edge. Submerge in the self-finished edge of fabric. This narrow border keeps the fabric from unraveling or fraying. Often it has an edge that resembles any fringe, though just as frequently, a clearly finished line will be found. Avoid this edge in your cut pieces as the texture frequently differs from the main body of the fabric.
 - Place the paper template on top of your fabric, matching the folded edge of the fabric with the side of the paper marked "folded edge".
 - Place pins throughout the template, passing together both layers of fabric as well as the paper.
 - Cut around the perimeter of each piece.
 - Leaving the pins in place, you will next need to strip each of the notches, taking care to not strip beyond the end of the "U" shape!

Notches are the "U" shaped markings that are found throughout the pattern. Some notches indicate seam allowance notches, which others will help you do up pattern pieces while sewing.

Mark all interior doll holes. Using a pin, bring together both layers of fabric and the pattern, mark the center of each doll hole with chalk, wax or other removable, non-permanent tool. A tailor's tuck may also be used.

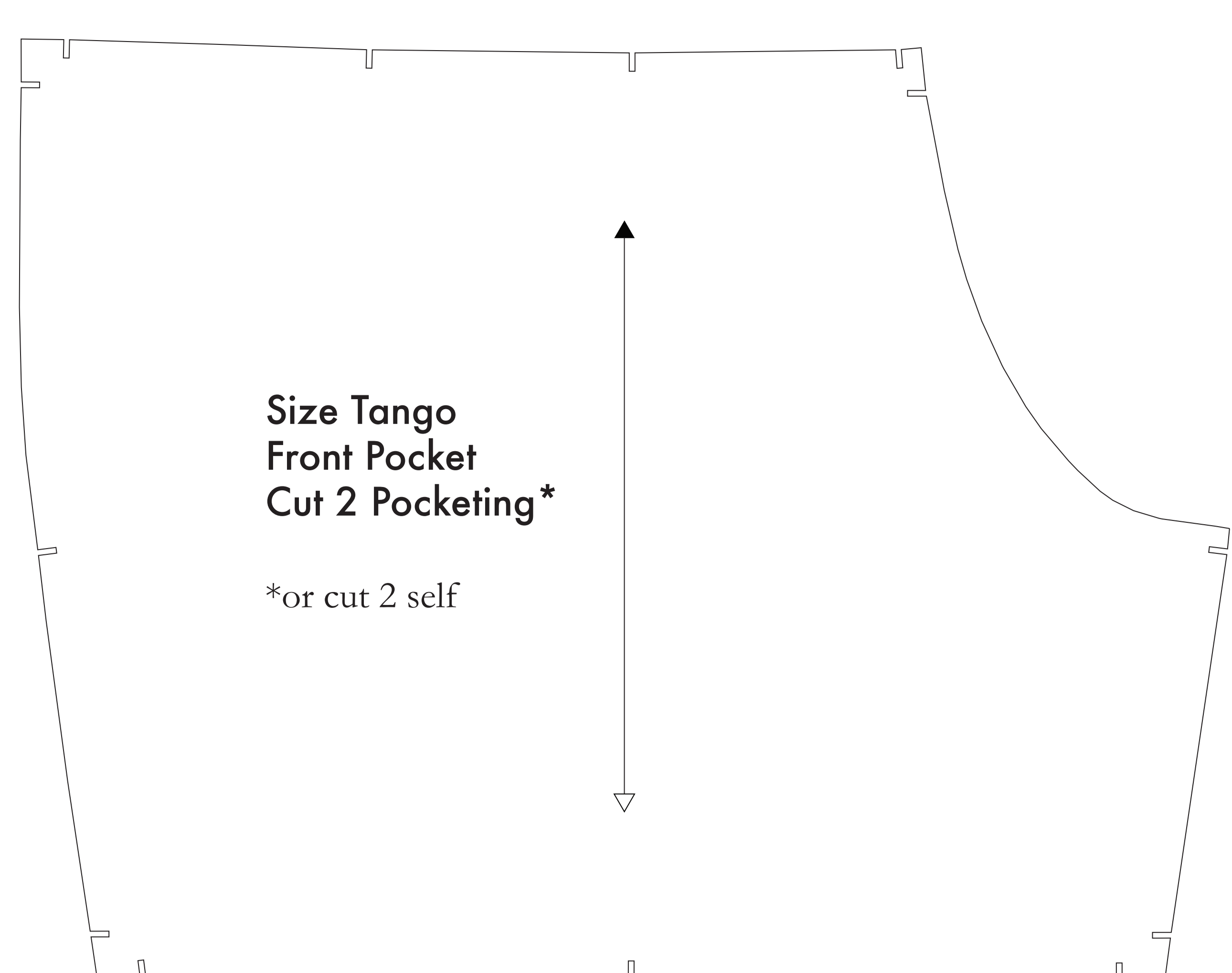
Trace notches and holes, or markings, as indicated by the following symbols:

- Seam allowance notches
- Doll holes
- Seam allowance notches
- Doll holes

NOTE A: FABRIC LESS THAN 54" WIDE
If your fabric is less than 54" wide, you will need to cut each pattern piece individually twice (the paper template and once a second on your fabric taking care to position the pattern pieces so that there is no wasted space. The pattern pieces are provided as all right-hand or left-hand pieces for ease of use. To find the precise markings look for the angle line with two arrows at either end. These lines indicate the direction, or grain, of the fabric. When marking fabric on your fabric, these lines have already been marked to the selvage edge of your fabric. To ensure that the two panels of the fabric are identical from the top and bottom, you are required to fold the fabric over twice (the same fabric with the pattern piece) to ensure that the pattern pieces are correctly positioned.

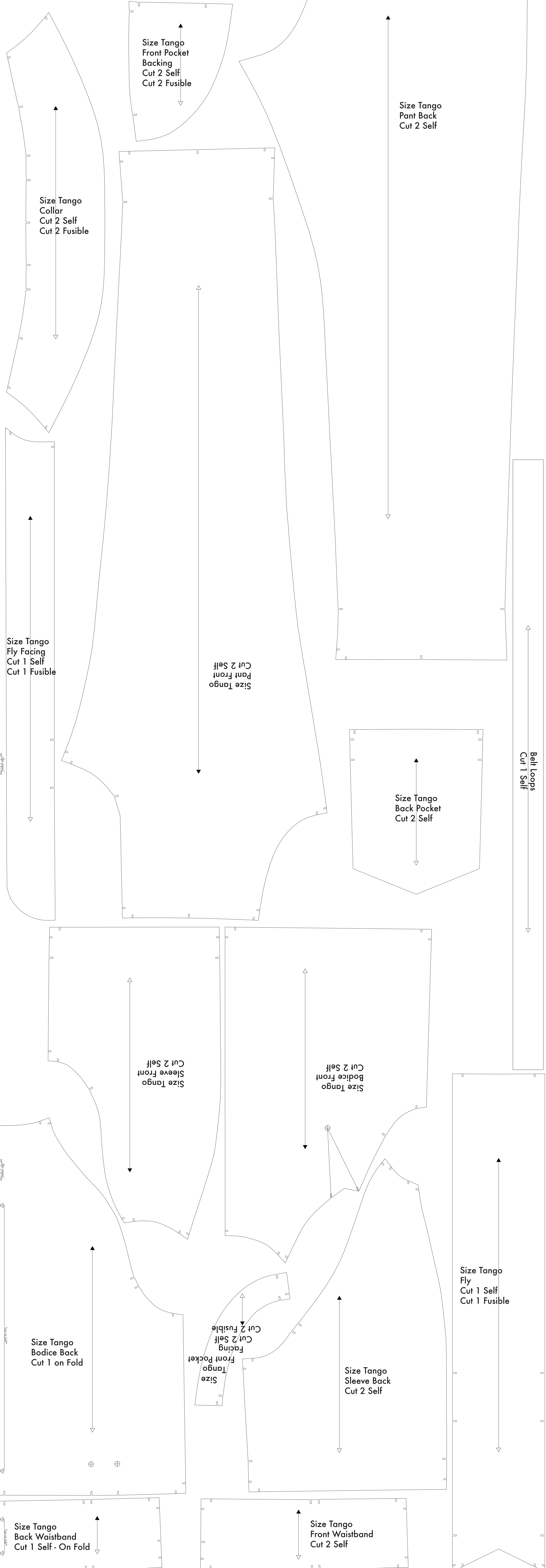
NOTE B: FABRIC WITH NAP OR DIRECTIONAL PATTERN
For fabric with a nap, such as velvet or couliure, fabric with a clear directional print, or for marking stripes such as a plaid, there must be a clear grain pattern indicated. This is done by three arrows on your fabric, crossing the fabric with arrows from one side pointing in the same direction.

NOTE C: USING FUSIBLE INTERFACING
Fusible interfacing is a material that is used to reinforce, strengthen, and stabilize certain pieces in a garment. While the use of fusible interfacing is optional, the BBS recommends that you use a light to medium weight non-stretch or non-fabric interfacing in the construction of JUMPSUIT.



Before cutting your fabric measure this square to make sure that the pattern is scaled correctly*
*Some printers and software will automatically scale large scale images which will affect the fit.

The inner square should measure 4" x 4"
The outer square should measure 12cm x 12cm



folded edge

folded edge

folded edge