

- SUPPLIES NEEDED**
- 3 1/4 YARDS OF 54" WIDE FABRIC
 - SHARP SCISSORS
 - REMOVABLE MARKING MEDIUM (chalk, wax, tailor's tack, etc.)
 - 1/2" INCHES SEPARATING ZIPPER
 - THREAD
 - SEWING MACHINE
- optional:
- 1/2 YARD OF THINNER POCKET FABRIC
 - FUSIBLE INTERFACING

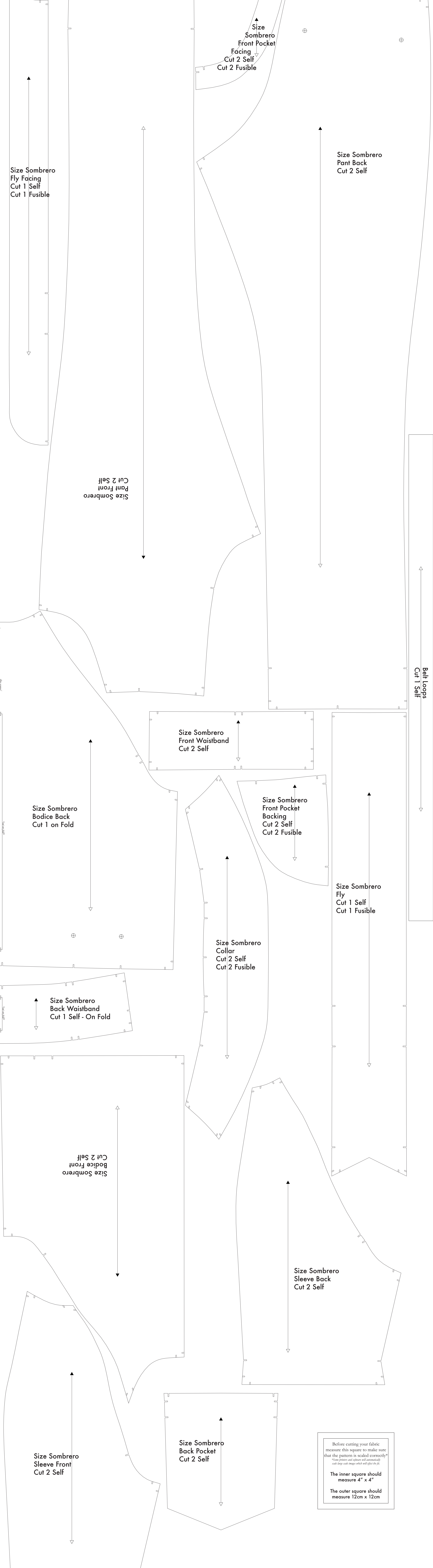
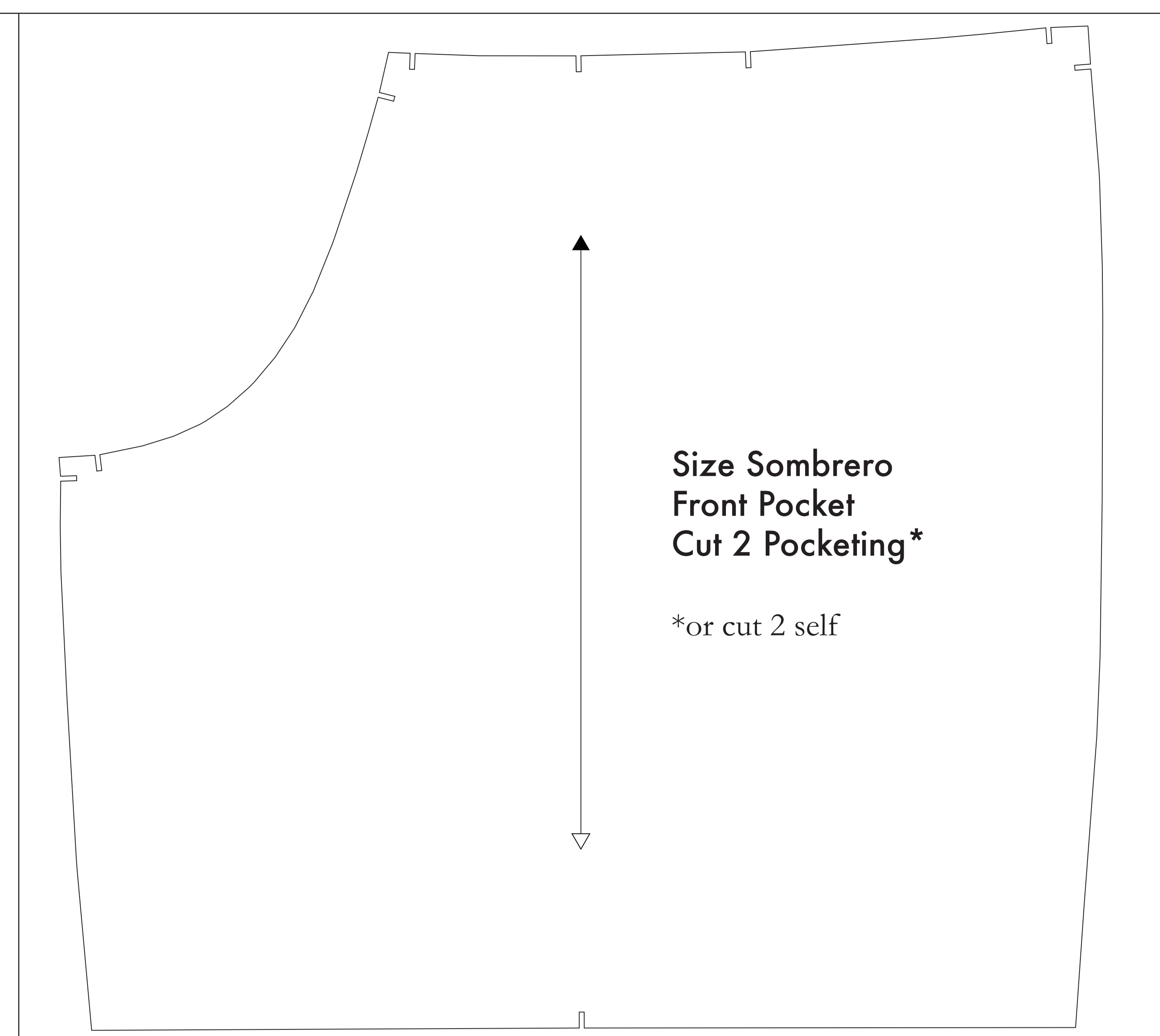
CUTTING INSTRUCTIONS

1. Print pattern. You can print this document (both on sheets of standard size paper and tape the pieces together, or print on a wide format printer 50" or wider). Paper edges offer this service for approximately \$12. If available to you, the B&B recommends wide format printing.
2. Trace your pattern to printed, cut along the measurement markings to remove any excess paper. This template should fit exactly on a 54" wide or larger piece of fabric that has been folded in half. If your fabric is less than 54" wide, see **NOTE A**. For maximum neck fit, print on a half size for fabric that does not have a direction. For fabric with a nap, such as velvet or corduroy or fabric with a clear directional print, see **NOTE B**.
3. Fold your fabric in half along the lengthwise grain matching selvage edge to selvage edge. Schedule in the self finished edge of fabric. This narrow border keeps the fabric from unraveling or fraying. Once it has an edge that matches the other edge, though just as important, a clearly finished line will be formed. From this edge to your cut piece on the pattern frequently differs from the main body of the fabric.
4. Place the paper template on top of your fabric, matching the folded edge of the fabric with the side of the paper marked "fold edge".
5. Place pins throughout the template pinning together both layers of fabric as well as the paper.
6. Cut around the perimeter of each piece.
7. Leaving the top or fabric edge will not need to strip each of the notches, taking care to not strip beyond the end of the U shape.

NOTE A: FABRIC LESS THAN 54" WIDE
 If your fabric is less than 54" wide, you will need to use an extension piece. This piece will be cut from the same material and used to extend your fabric to the required width. The extension piece will be cut from the same material and used to extend your fabric to the required width. The extension piece will be cut from the same material and used to extend your fabric to the required width.

NOTE B: FABRIC WITH NAP OR DIRECTIONAL PATTERN
 For fabric with a nap, such as velvet or corduroy, fabric with a clear directional print, or fabric with a directional pattern, such as plaid, you will need to use the pattern piece laid flat. For the fabric to be the same as the fabric, covering the fold back were front or each pattern piece in the same direction.

NOTE C: USING FUSIBLE INTERFACING
 Fusible interfacing is a material that is used to stiffen, strengthen, and reduce crease lines in garments. When the interfacing is applied to a pattern piece, it will be cut out of the fabric and placed on the pattern piece. It will be cut out of the fabric and placed on the pattern piece. It will be cut out of the fabric and placed on the pattern piece.



Before cutting your fabric measure this square to make sure that the pattern is scaled correctly.*

*Using pattern and scissors will automatically scale large scale images which will affect the fit.

The inner square should measure 4" x 4"

The outer square should measure 12cm x 12cm