

- SUPPLIES NEEDED**
- 3 1/2 YARDS OF 54" WIDE FABRIC
 - SHARP SCISSORS
 - REMOVABLE MARKING MEDIUM (chalk, wax, tailor's tack, etc.)
 - 1 1/2" NO-SERRATING ZIPPER
 - THREAD
 - SEWING MACHINE
 - 1/2 YARD OF THINNER POCKET FABRIC
 - FUSIBLE INTERFACING

CUTTING INSTRUCTIONS

Print pattern. You can print the document out on sheets of standard size paper and tape the pieces together, or print on a wide-format printer (24" or wider). Print sheets offer this service for approximately \$12. If available to you, the BETA recommend rock format printing.

1. Once your pattern is printed, cut along the outermost rectangle to remove any excess paper. The template should fit exactly on a 54" wide or larger piece of fabric that has been folded in half. If your fabric is less than 54" wide, use a smaller piece of fabric.

NOTE A: For maximum yield this pattern is laid out for fabric that does not have a direction. For fabric with a direction, such as denim, you may need to rotate the pattern pieces. **NOTE B:** Fold one fabric in half along the long edge, grain matching, so the edge to be finished will be inside. When in the middle of the fabric, the center fold line will be inside. Avoid this edge in your cut pieces as the seam frequently differs from the outer body of the fabric.

2. Print the paper template on top of your fabric, matching the labeled edge of the fabric with the side of the paper. Place the paper template on top of your fabric, matching the labeled edge of the fabric with the side of the paper.

3. Cut around the perimeter of each piece.

4. Following the grain of fabric, you will need to cut each of the pieces, taking care to cut only beyond the end of the L-shaped.

5. Mark all notches and fold lines. Using a pin, bring together both layers of fabric and the pattern, mark the center of each fold with chalk, wax, or other removable, non-permanent mark. A tailor's tack may also be used.

6. **REPPING:** Cut fabric interlining pieces. **NOTE C:** For more safety, pattern pieces that use fusible will be marked with the direction "Cut 2 Fusible" or "Cut 1 Fusible". These pieces are the Collar, Fly, Fly Facing, Front Pocket Facing, and Front Pocket Backing. If you are using a fusible material, then the Front Pocket Fly may be cut straight near other pattern pieces. Pushing it out in rubber block or use of other material - You will find an example of pushing on any page of this page.

NOTE A: FABRIC WITH A DIRECTION

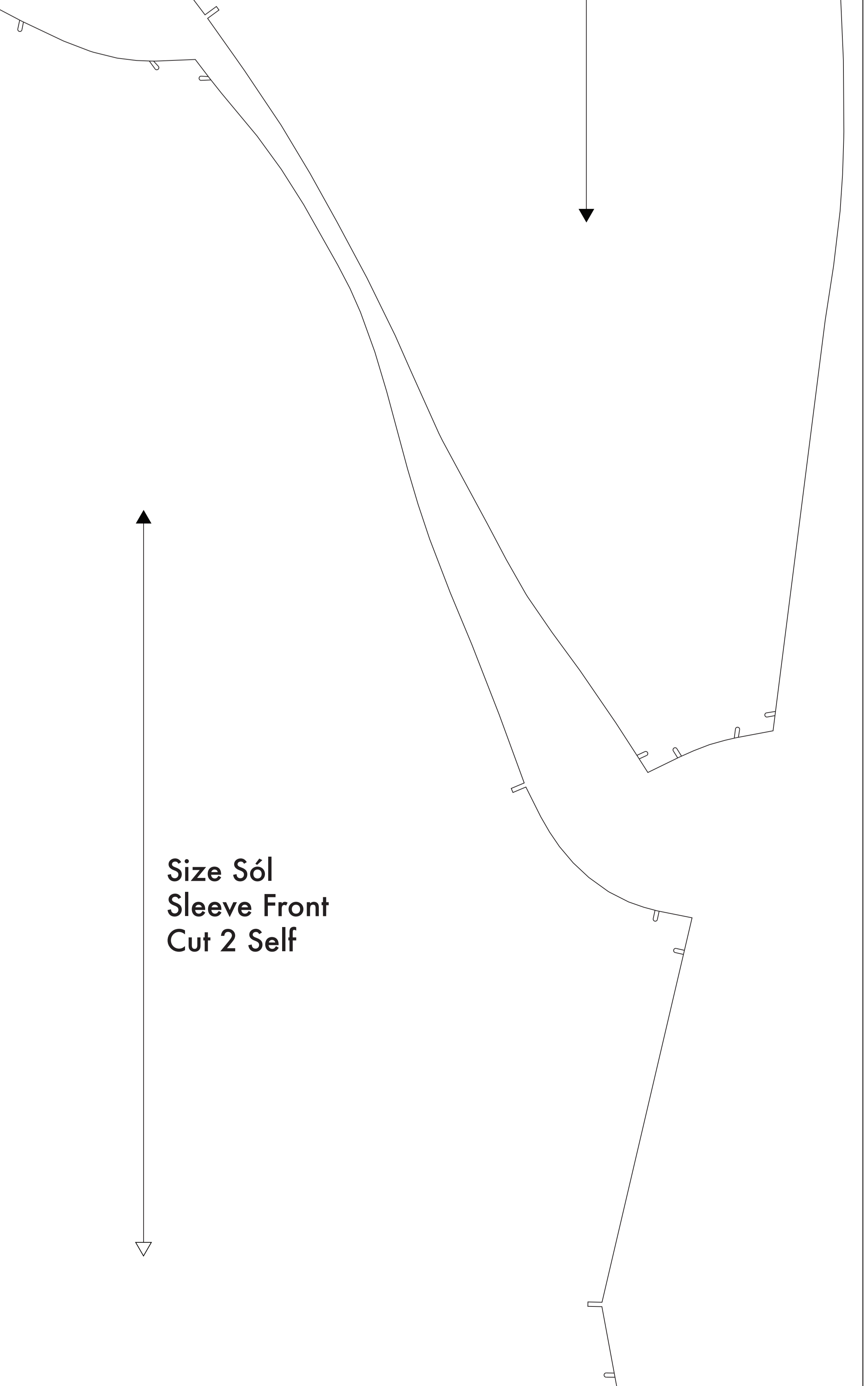
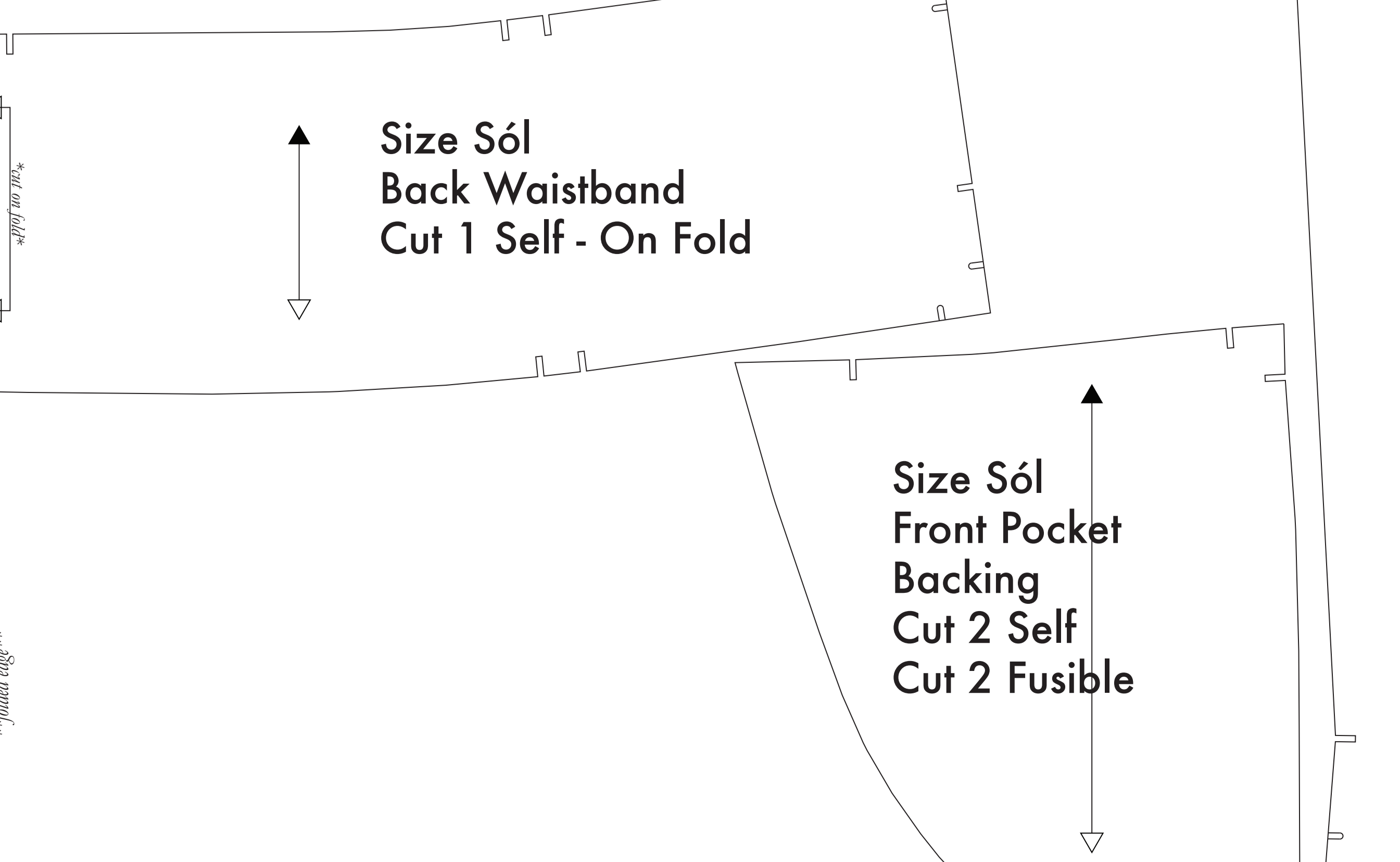
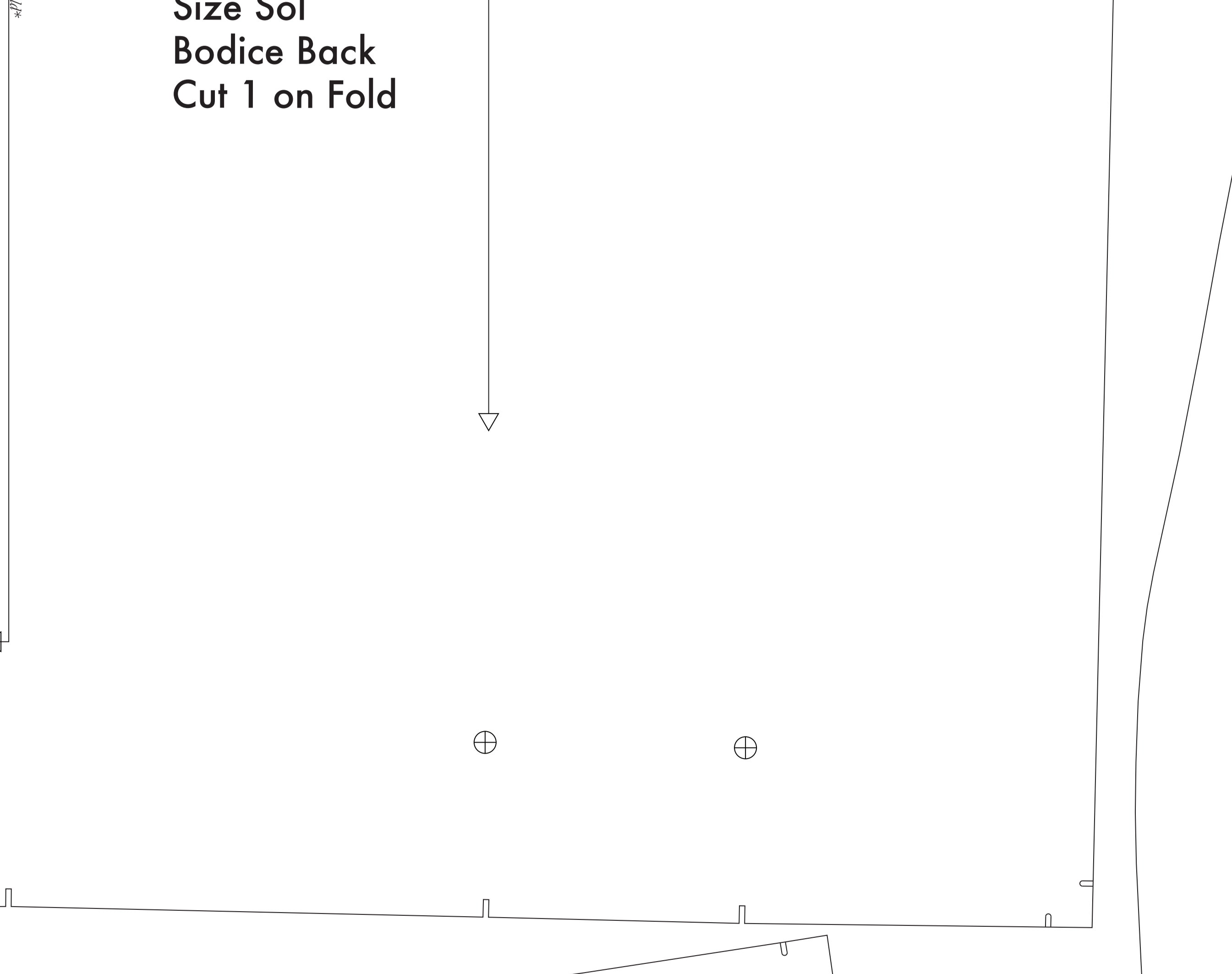
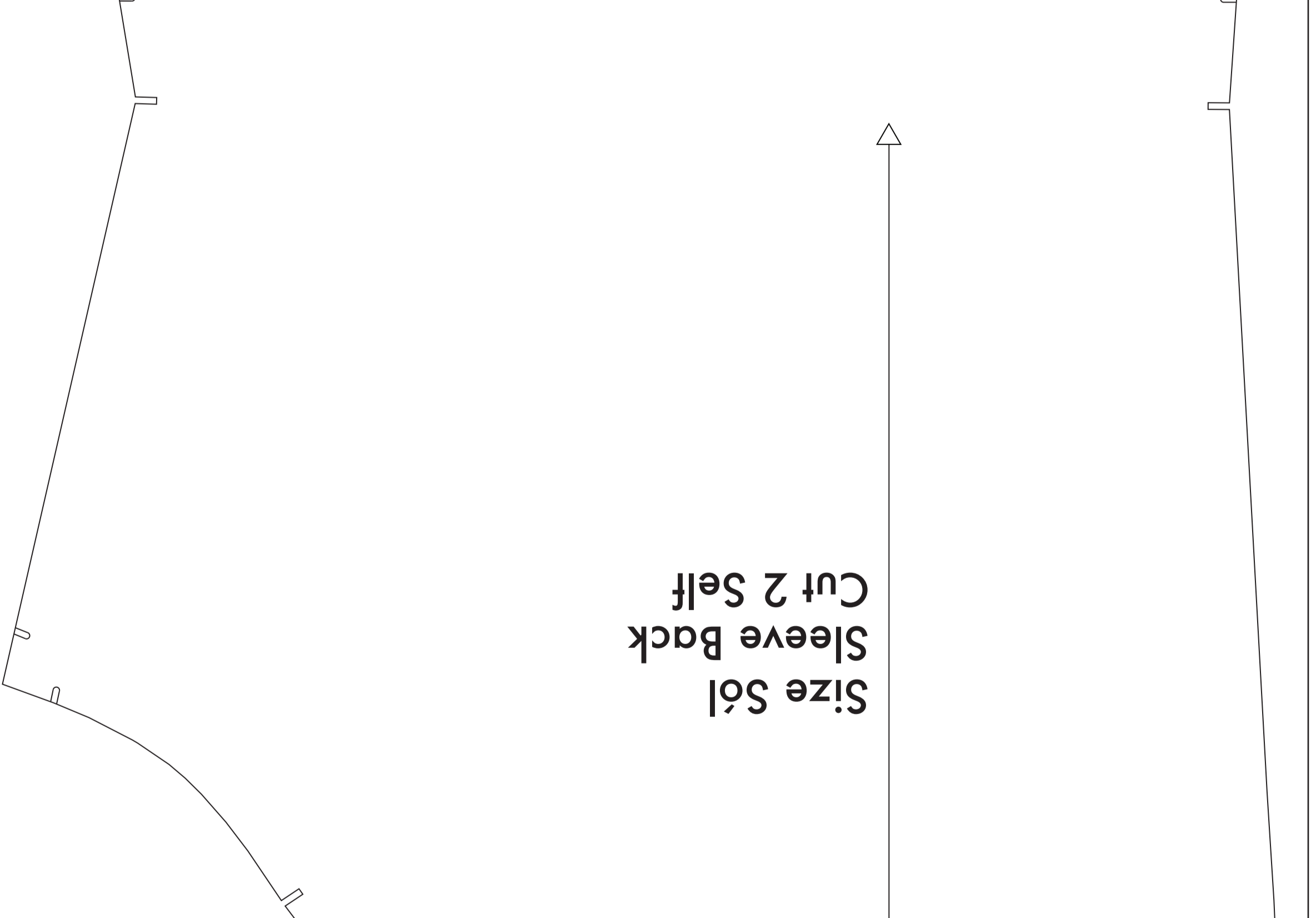
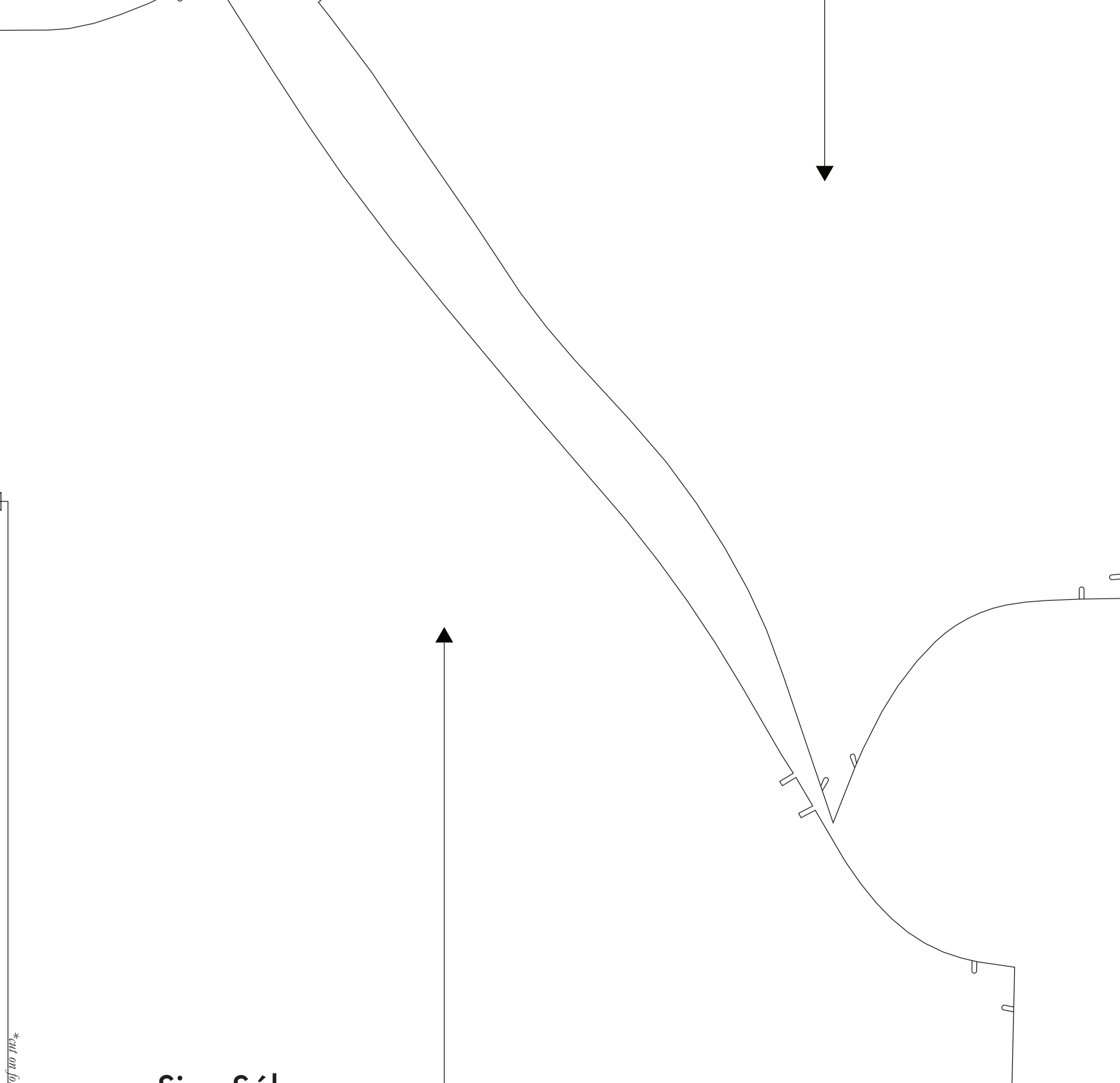
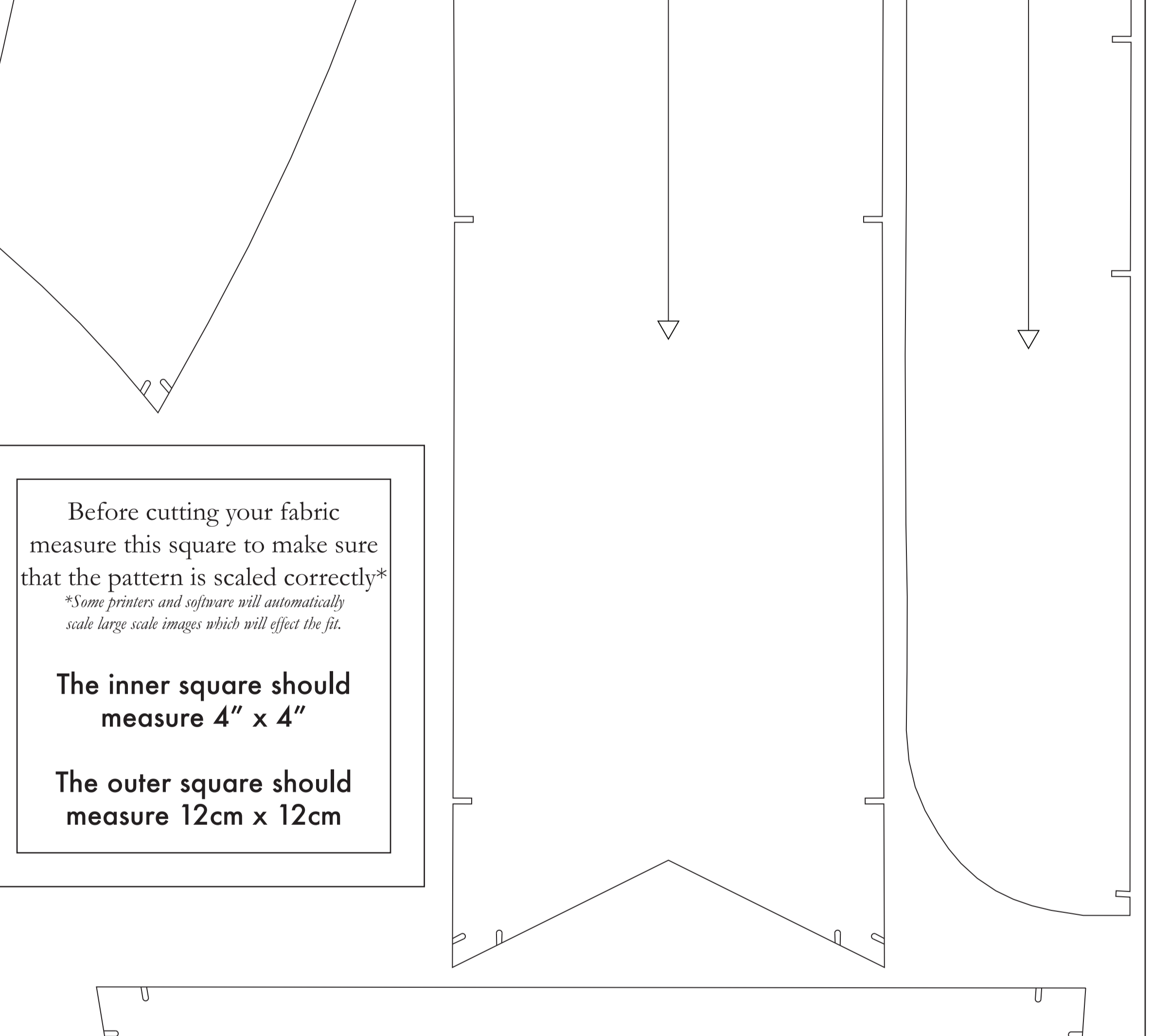
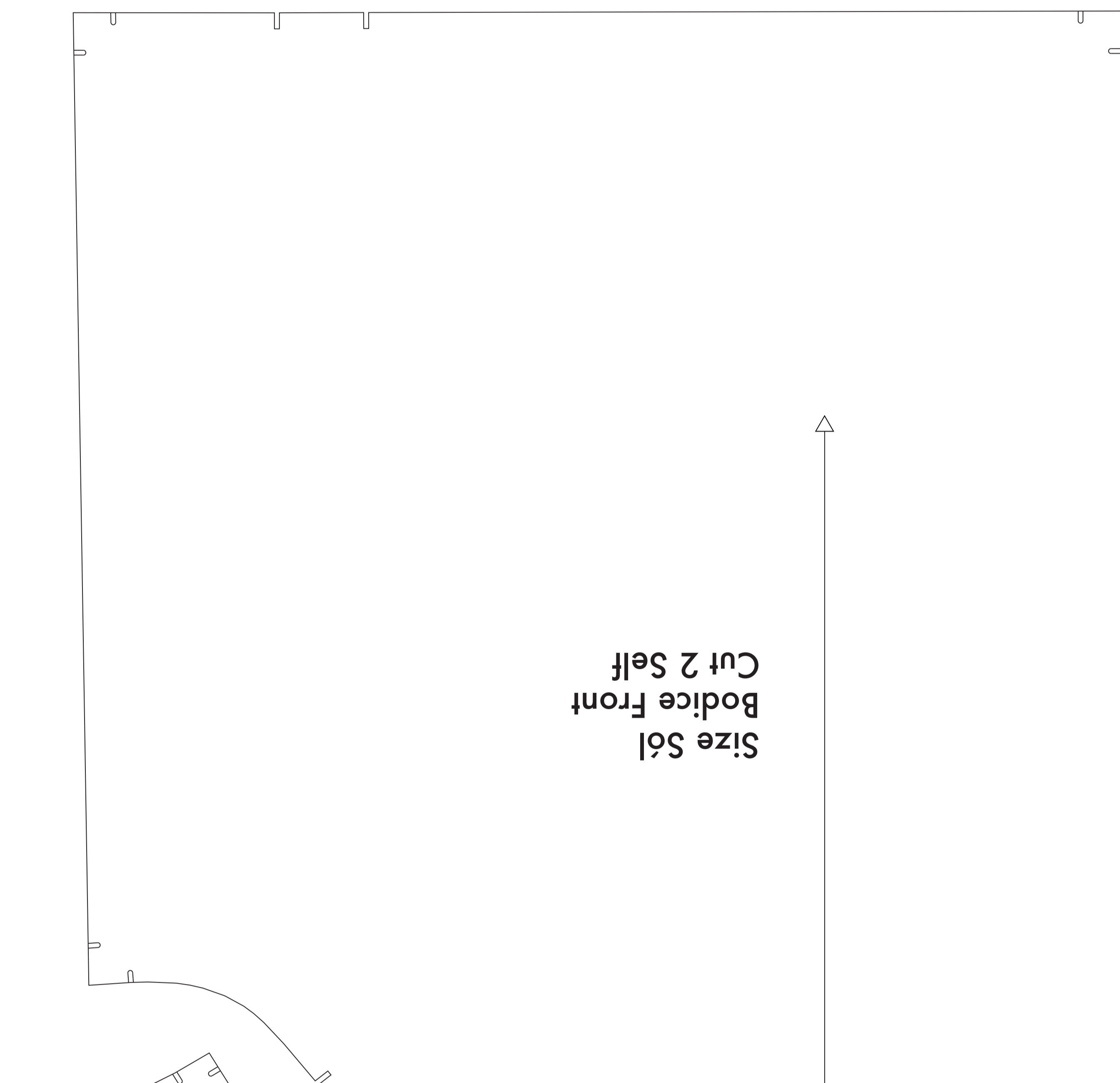
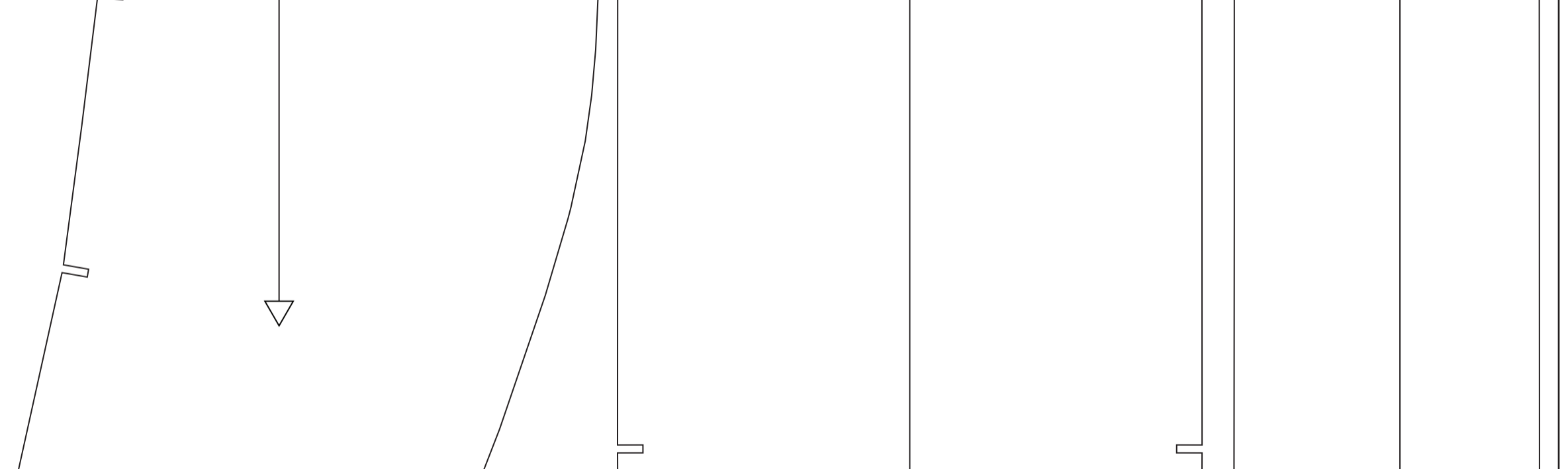
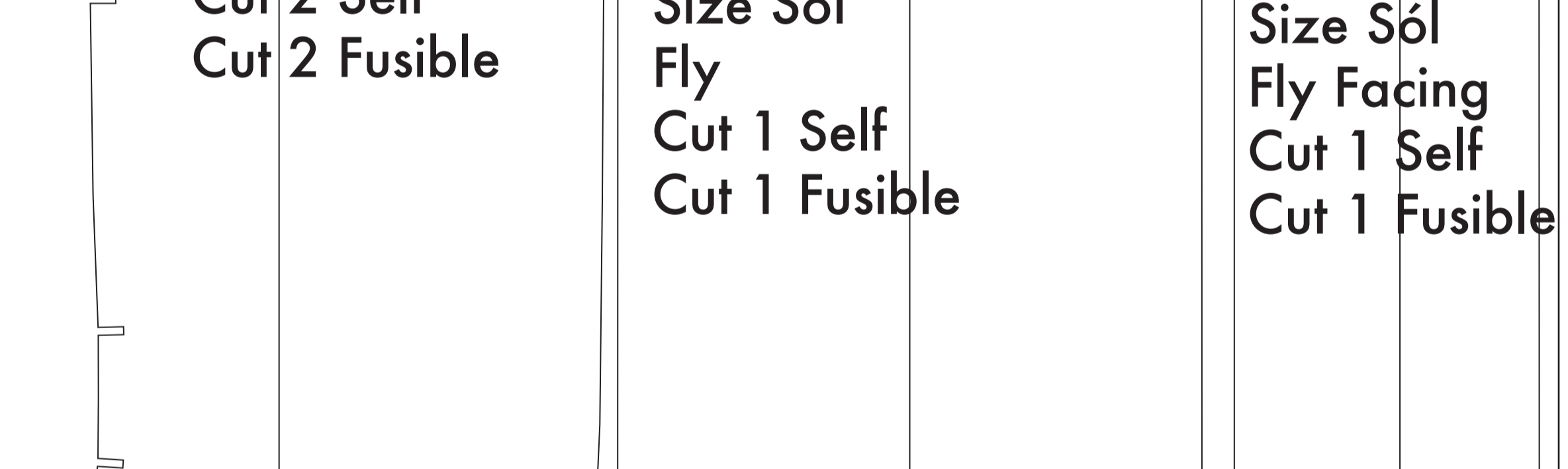
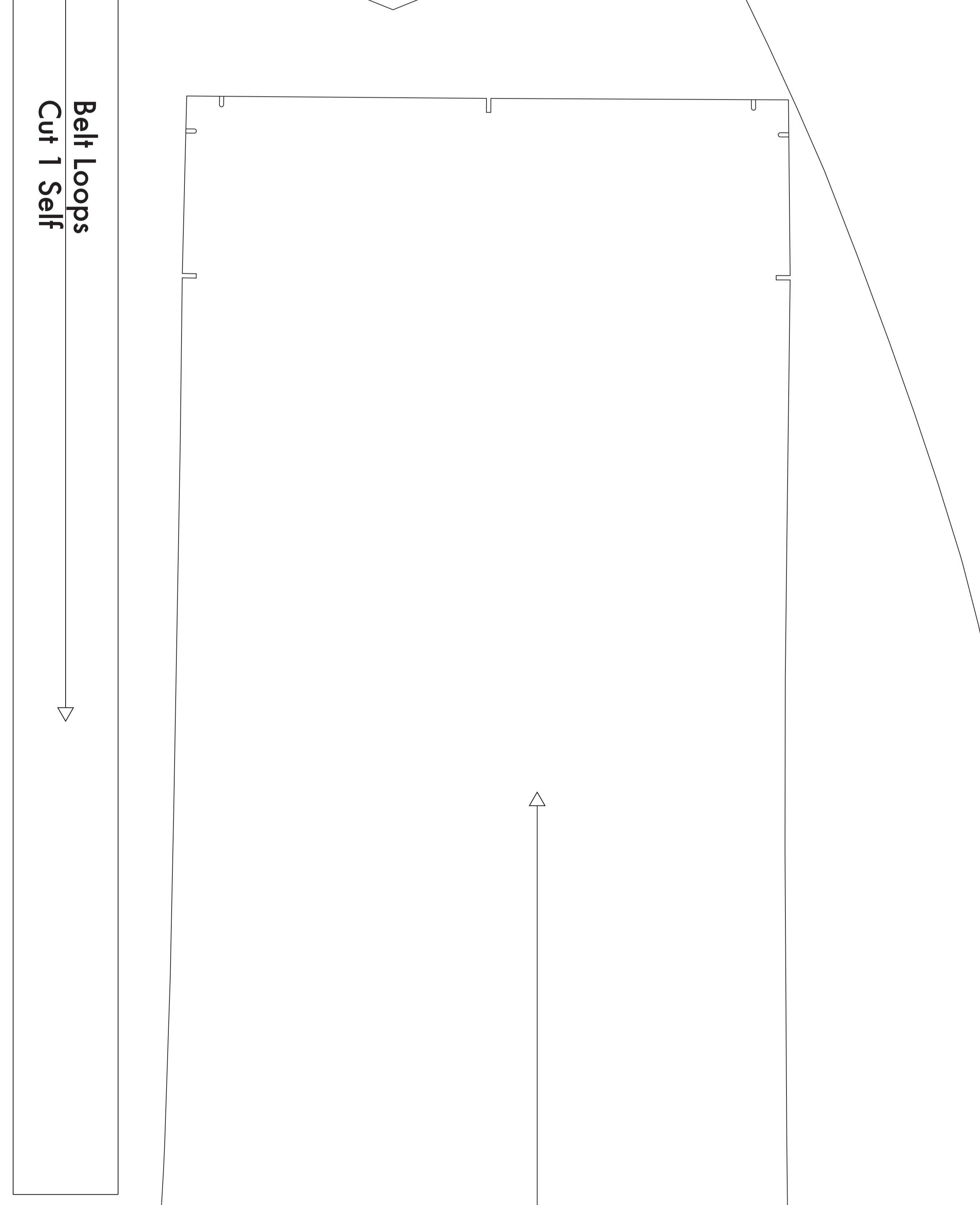
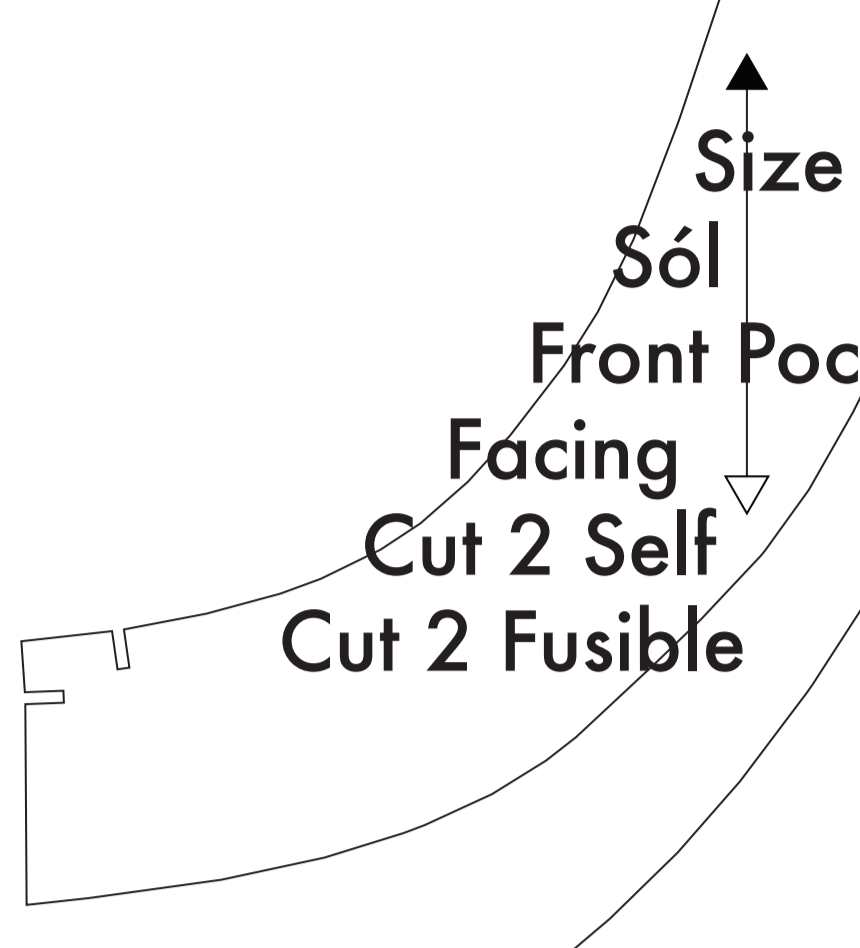
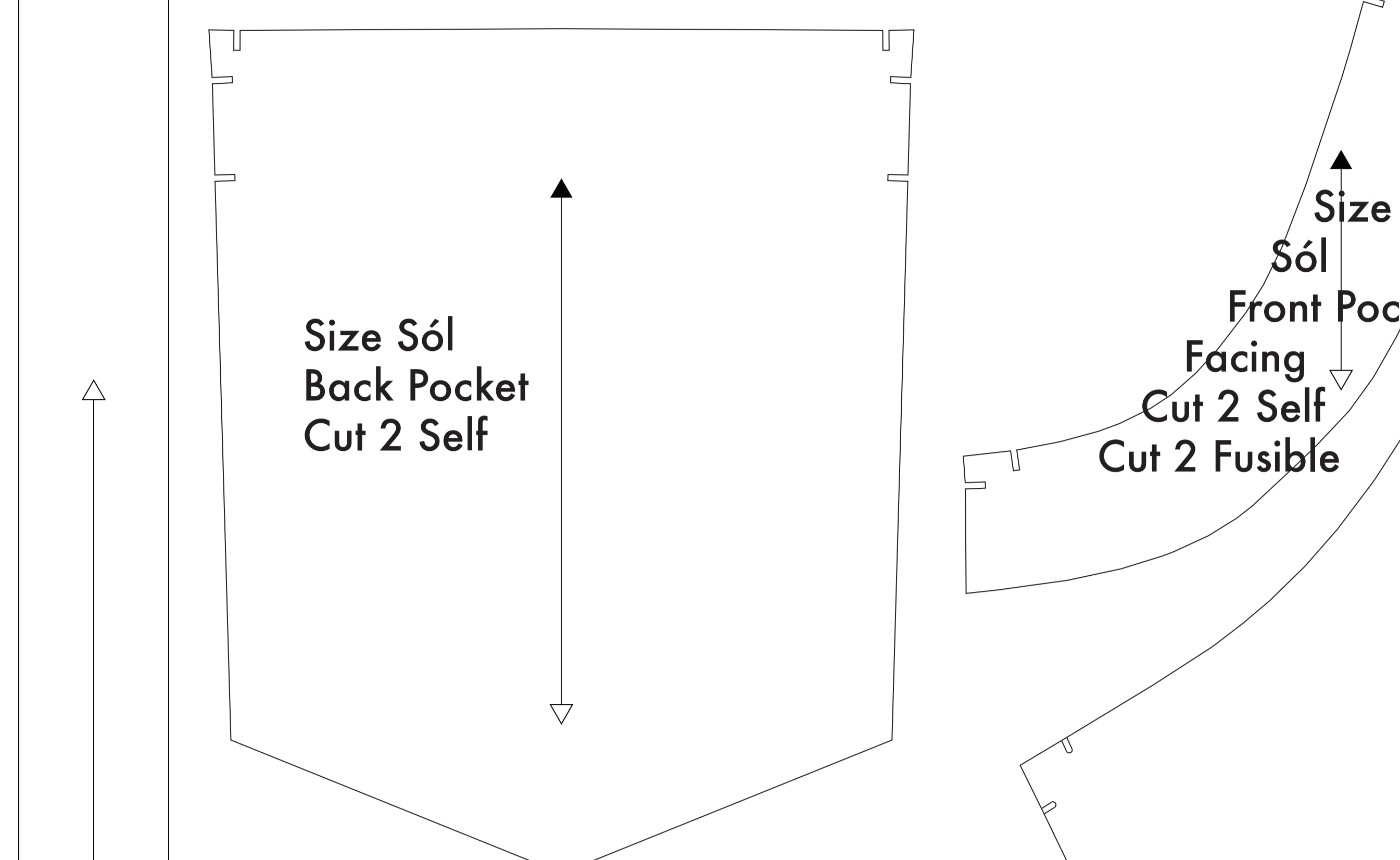
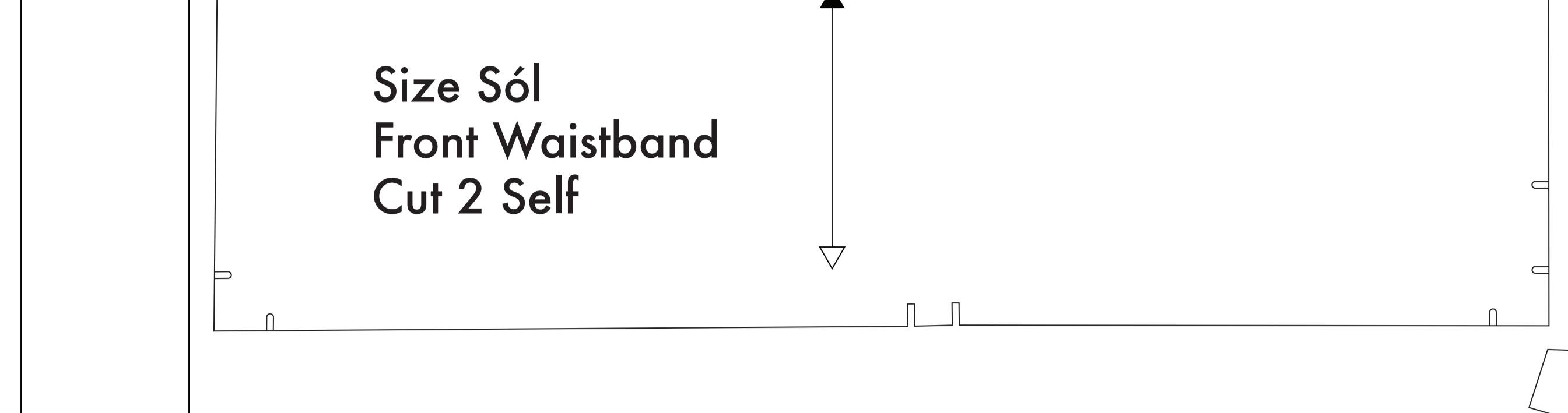
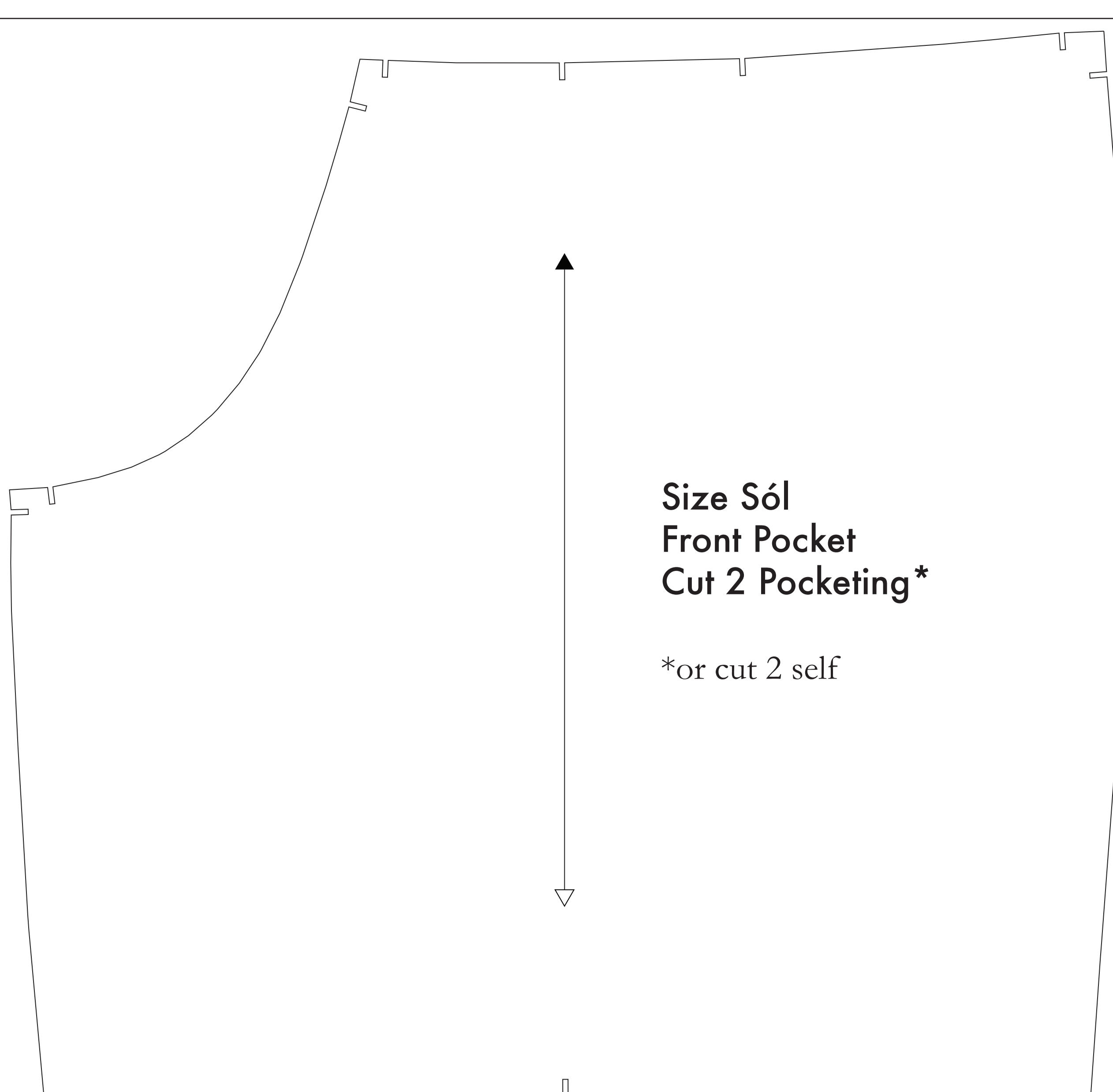
When fabric has a direction, you will need to cut each pattern piece individually from the paper template and place it on the fabric in the correct orientation. The pattern pieces are laid out for fabric that does not have a direction. For fabric with a direction, such as denim, you may need to rotate the pattern pieces. **NOTE B:** Fold one fabric in half along the long edge, grain matching, so the edge to be finished will be inside. When in the middle of the fabric, the center fold line will be inside. Avoid this edge in your cut pieces as the seam frequently differs from the outer body of the fabric.

NOTE B: FABRIC WITH A DIRECTION

When fabric has a direction, you will need to cut each pattern piece individually from the paper template and place it on the fabric in the correct orientation. The pattern pieces are laid out for fabric that does not have a direction. For fabric with a direction, such as denim, you may need to rotate the pattern pieces. **NOTE C:** For more safety, pattern pieces that use fusible will be marked with the direction "Cut 2 Fusible" or "Cut 1 Fusible". These pieces are the Collar, Fly, Fly Facing, Front Pocket Facing, and Front Pocket Backing. If you are using a fusible material, then the Front Pocket Fly may be cut straight near other pattern pieces. Pushing it out in rubber block or use of other material - You will find an example of pushing on any page of this page.

NOTE C: USING FUSIBLE INTERFACING

Fusible interfacing is available in many weights, strengths, and finishes. When using a fusible interfacing, you will need to cut the pattern pieces individually from the paper template and place them on the fabric in the correct orientation. The pattern pieces are laid out for fabric that does not have a direction. For fabric with a direction, such as denim, you may need to rotate the pattern pieces. **NOTE D:** For more safety, pattern pieces that use fusible will be marked with the direction "Cut 2 Fusible" or "Cut 1 Fusible". These pieces are the Collar, Fly, Fly Facing, Front Pocket Facing, and Front Pocket Backing. If you are using a fusible material, then the Front Pocket Fly may be cut straight near other pattern pieces. Pushing it out in rubber block or use of other material - You will find an example of pushing on any page of this page.



Before cutting your fabric measure this square to make sure that the pattern is scaled correctly*
 *Some printers and software will automatically scale large scale images which will affect the fit.
 The inner square should measure 4" x 4"
 The outer square should measure 12cm x 12cm