

- SUPPLIES NEEDED**
- 3 YARDS OF 54" WIDE FABRIC
  - SHARP SCISSORS
  - REMOVABLE MARKING MEDIUM (chalk, wax, tailor's tack, etc.)
  - 1/2" NONSEPARATING ZIPPER
  - THREAD
  - SEWING MACHINE
- optional:**
- 1/2 YARD OF THINNER POCKET FABRIC
  - FUSIBLE INTERFACING

**CUTTING INSTRUCTIONS**

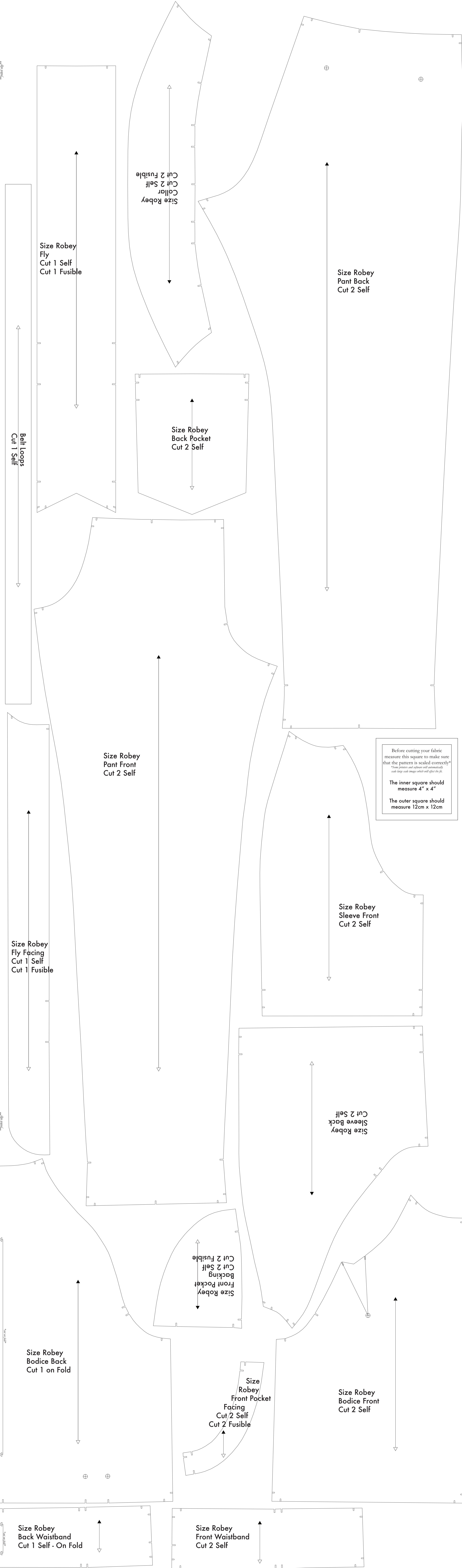
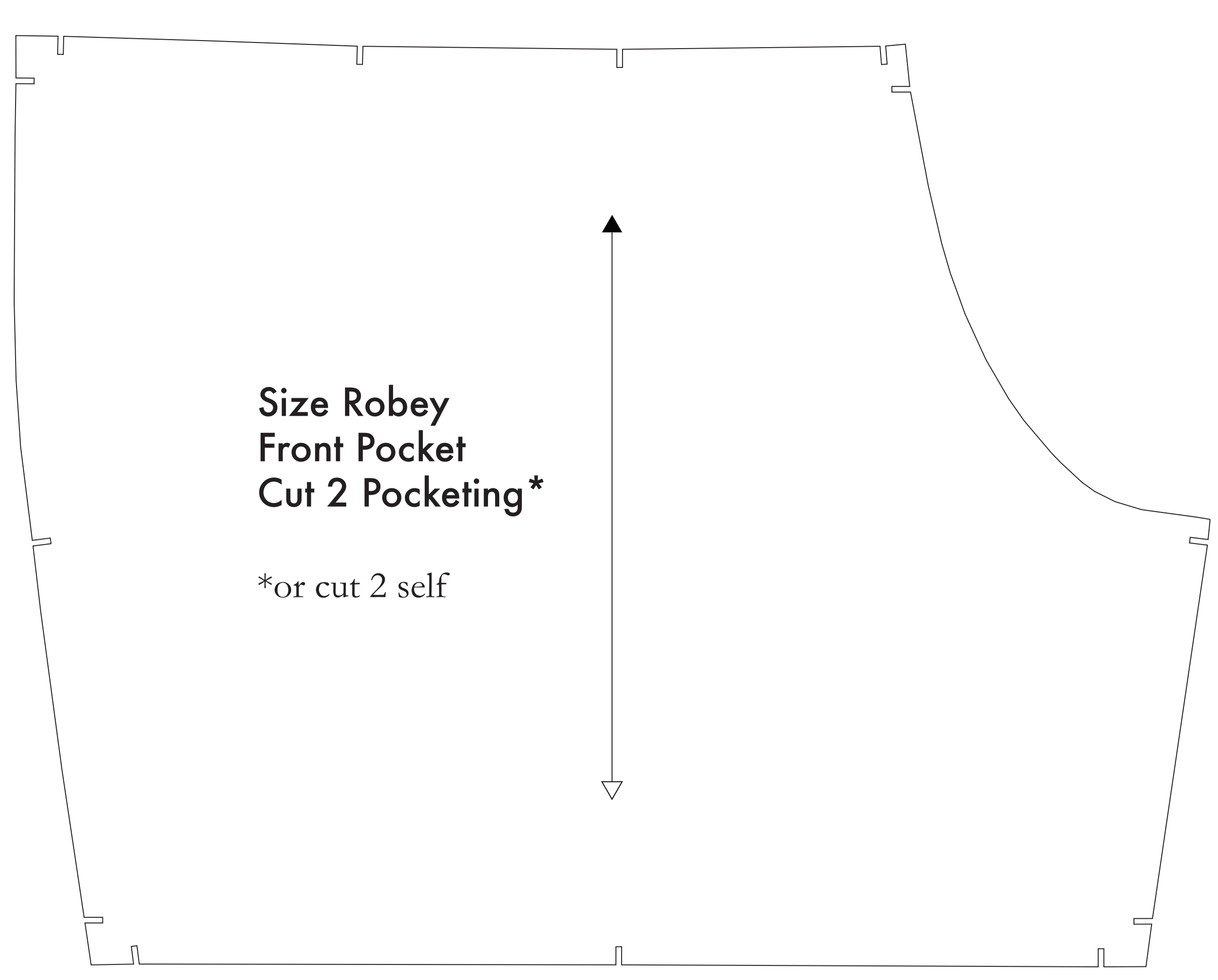
- Print pattern. You can print this document flat on sheets of standard size paper and tape the pieces together, or print on a wide-format printer (36" or wider). These sheets offer the version for approximately 82.5". If available to you, the B2D recommends wide-format printing.
- Check your pattern is printed, cut along the outermost rectangle to remove any excess paper. This template should fit equally on a 54" wide or larger piece of fabric that has been folded in half. If your fabric is less than 54" wide see **NOTE A**. For maximum yield this pattern is laid out for fabric that does not have a direction. For fabric with a nap, such as velvet or corduroy or fabric with a clear directional print see **NOTE B**.
- Hold your fabric in half along the lengthwise grain matching selvage edge to selvage edge. Schrodge in the self-finished edge of fabric. This narrow border keeps the fabric from unraveling or fraying. Often it has an edge that resembles fine fringe, though not as frequently, a clearly finished hem will be found. Ironed this edge is your cut piece as the pattern frequently differs from the main body of the fabric.
- Trace the paper template on top layer of fabric, matching the finished edge of the fabric with the side of the paper finished "faded edge".
- Place pins throughout the template pinning together both layers of fabric as well as the paper.
- Cut around the perimeter of each piece.
- Leaving the pins in place, you will next need to strip each of the notches, taking care to not strip beyond the end of the "faded edge".

- Mark on the *if slight marking that are found throughout the pattern*. Some include notches, some include width, and others will help you to align pattern pieces while sewing.
- Mark all inner and outer notches, and other markings as indicated by the following symbols:  
They will be found on the Front Fly, Bodice Back, and if your pattern contains four darts the you will find a mark on the Bodice Front.
- OPTIONAL:** Cut fusible interfacing pieces (see **NOTE C** for more info). Pattern pieces that use fusible will be marked with the direction "Cut 2 Fusible" or "Cut 1 Fusible". These pieces are the Collar, Fly Facing, Front Pocket Facing, and Front Pocket Backing. To cut the fusible, lay the material down with the grain side facing up, then place your pattern down and cut around the perimeter of each piece and notch.
- Cut the Front Pocket Bag out of a lighter pocketing material. If you are not using a pocketing material, then the Front Pocket Bag may be cut alongside your other pattern pieces. *Pocketing is used to reduce bulk in cases of thicker materials* - You will find an example of pocketing on one page of this pattern.

**NOTE A: FABRIC LESS THAN 54" WIDE**  
If your fabric is less than 54" wide you will need to cut each pattern piece vertically from the paper template and sew as listed on your fabric taking care to preserve the grain direction on the fabric's directional print. The quarter notches and pocketing are all marked on each pattern piece for ease of use. To find the quarter markings look for the single line with two arrows, or a double line with two arrows on your fabric that show the direction of the grain. When cutting always use your fabric that shows the grain direction. The double arrow of your fabric is marked for the top and bottom arrows on the fabric. When the top and bottom arrows are equidistant from the center of your fabric then the pattern pieces are correctly positioned.

**NOTE B: FABRIC WITH NAP OR DIRECTIONAL PATTERN**  
For fabric with a nap or fabric with a directional print, such as velvet or corduroy, or fabric with a clear directional print, or for marking purposes such as a pleat, you will need to cut the pattern pieces individually for the front or on your fabric, ensuring that the finished seam faced to each pattern piece will be correctly oriented.

**NOTE C: USING FUSIBLE INTERFACING**  
Fusible interfacing is a material that is used to reinforce, strengthen, and stabilize certain pieces in a garment. While the use of fusible interfacing is optional, the B2D has been designed to accommodate light to medium weight non-woven or semi-fusible interfacing on the recommended 3/8" interfacing.



Before cutting your fabric measure this square to make sure that the pattern is scaled correctly\*  
\*Some printers and software will automatically scale large scale images which will affect the fit.

The inner square should measure 4" x 4"

The outer square should measure 12cm x 12cm